

VOYAGER II — WHITBY BOAT WORKS



Builder: WHITBY BOAT WORKS

LOA: 42' 0" (12.80m)

Year Built: 1981

Beam: 13' 0" (3.96m)

Model: Center Cockpit

Min Draft: 5' 8" (1.73m)

Price: PRICE ON APPLICATION

Location: United States

Our experienced yacht broker, Andrey Shestakov, will help you choose and buy a yacht that best suits your needs **Voyager II — WHITBY BOAT WORKS** from our catalogue. Presently, at **Shestakov Yacht Sales Inc.**, we have a wide variety of yachts available on our sale's list. We also work in close contact with all the big yacht manufacturers from all over the world.

If you would like to buy a yacht **Voyager II — WHITBY BOAT WORKS** or would like help answering any questions concerning purchasing, selling or chartering a yacht, please call **+1(954)274-4435**

TABLE OF CONTENTS

TABLE OF CONTENTS	2
SPECIFICATIONS	4
Overview	4
Basic Information	4
Dimensions	4
Speed, Capacities and Weight	4
Accommodations	4
Hull and Deck Information	5
Engine Information	5
DETAILED INFORMATION	6
Overview	6
Exclusions	8
Disclaimer	9
PHOTOS	10
2	10
3	10
4	10
5	10
6	11
7	11
9	11
8	11
10	12
11	12
12	12
13	12
14	13
15	13

16	13
17	13
18	14
19	14
20	14
21	14
22	15
23	15
CONTACTS	16
Contact details	16
Telephones	16
Office hours	16
Address	16

SPECIFICATIONS

Overview

The Whitby 42 has a modern center cockpit/aft stateroom with a pass-through. Forward is a large V-berth and day head with shared shower. In the salon, an L-shaped settee dinette arrangement is offset by a long port-side settee and proper mid-ship bunk. A U-shaped galley is aft to port. The aft cabin has a full width bunk with an ensuite head. The entire boat is paneled with beautiful, classically stained teak finishes, giving the vessel a rather salty and homey feel. 2018 Survey available

Basic Information

Category: Center Cockpit

Model Year: 1981

Year Built: 1981

Country: United States

Dimensions

LOA: 42' 0" (12.80m)

LWL: 32' 8" (9.96m)

Beam: 13' 0" (3.96m)

Min Draft: 5' 8" (1.73m)

Speed, Capacities and Weight

Displacement: 32000 Pounds

Water Capacity: 290 Gallons

Holding Tank: 40 Gallons

Fuel Capacity: 200 Gallons

Accommodations

Total Cabins: 2

Total Berths: 7

Total Heads: 2

Hull and Deck Information

Hull Material: Fiberglass

Engine Information

Engines: 1

Manufacturer: Lehman

Model: 4D254

Engine Type: Inboard

Fuel Type: Diesel

DETAILED INFORMATION

Overview

Electronics and Navigation Equipment

- Ritchie magnetic compass
- Garmin GPSMap 441S chartplotter & sounder
- Furuno 1623 Radar
- Standard Horizon Intrepid VHF with remote mic
- Autohelm ST6000 autopilot
- Furuno FS-1502 SSB

Sails and Canvas

- Sails - Quantum Dacron:
- 135% Genoa
- Main
- Mizzen

Canvas

- Jib UV strip
- Main and mizzen sail covers
- Cockpit bimini (canvas on stainless-steel frame)
- Cockpit dodger and sides (canvas and Eisenglass)

Electrical

- Xantrex/PRO XM1800 inverter
- AC power 1800 watt

- Xantrex TC6012 batter charger
- House bank: 4 x Trojan T-105 225 ah each (total 450 ah)
- Starter battery: Group 24 550 cca

Accommodations and Layout

Headroom is 6'6" or better, throughout the boat and storage capacity can only be noted as "incredible". Beautiful teak joinery throughout, and the cabin sole is teak and holly plank.

VOYAGER II sleeps up to seven people in accommodations with the forward cabin, main salon and large private owners cabin. The unique aft cabin design with separate cockpit entrance and private owners head and shower is a signature of the WHITBY 42. There is extensive storage in the form of shelves, hanging lockers and drawers throughout and she features private accommodations for two couples in separate cabins, plus settee berths in the main cabin.

In the main cabin, which can be accessed by "walk-through" from the owners private cabin, or by the cockpit companionway, immediately to port of the companionway, you will find the classic "wrap around" "U" shape configured, offshore safe galley, that will delight the gourmet, whether at sea or dockside, drawers, double deep Stainless steel sinks, cutting board, extensive louvered lockers, large dry storage bin, built in microwave, custom built spice rack, wine glass rack, pot and pan dry storage, large dry food cupboard, fully gimballed stove and generous counter space, and even a garbage bin, a feature that the seasoned cruiser really appreciates!

The galley is a cooks dream, with a good sized storage cabinet, large opening hatch for light and ventilation overhead, two ports over the stove area for added light and ventilation.

Directly across from the galley, to starboard, is a proper offshore, forward facing navigation station and large desk chart table, which would house plenty of charts inside and tremendous room for an exceptional compliment of navigation and electronic equipment for easy use while navigating.

The large Nav table/desk has a generous storage locker under the desk top and room for the additional electronic navigation and communication equipment outboard. The nav seat has a large storage compartment underneath, a handy place for emergency tools and equipment. Next

aft and proceeding from the salon through the walk-through on the starboard side, outboard is a workbench with additional chart stowage under, bookcase and electrical panel above. It also provides access to the walk in engine room that is underneath the cockpit sole by way of inboard double access doors to the engine room.

The master stateroom is all the way aft and has large twin berths port and starboard or by use of the filler piece, one large queen berth athwartship, double hanging lockers, and storage space, and ample drawers, along with an enclosed head with sink and shower head. This type of athwartship bunk is designed for sleeping on either tack and makes for a good sea berth and those seasoned offshore sailors will tell any novice sailor that the best sleeping is in the aft cabin. To port there is a second companionway from this stateroom up to the cockpit. Under the ladder there is room for storage for companionway slides and screens. 17 opening ports and 3 hatches provide tremendous ventilation and light.

Amidships is the main salon which features a beautiful L-shaped settee with dining table (table folds up against bulkhead when not in use), and drawers below. Settee slides out to make a double berth. Opposite to starboard is a bench settee which makes into a double berth, with storage outboard, drawers and wine rack with fold out cocktail table.

Proceeding forward, the guest head/shower is to port, accessible from either the salon or directly from the guest stateroom. Opposite, is a storage locker and a hanging locker. The guest stateroom has large V-berth with filler piece, and drawers under and storage above port and starboard. There is an overhead hatch as well as opening ports.

There are 17 opening ports, with screens and 2 opening deck hatches, plus the companionway hatch which provides a tremendous amount of light and superior cross ventilation. There are also 4 S/S dorade vents, and a ventilator in each head. Below deck ventilation far surpasses the standards in the industry.

Updates June 2020

New Batteries

New Alternator

Exclusions

Owner's personal belongings.

Disclaimer

The Company offers the details of this vessel or yacht in good faith but cannot guarantee or warrant the accuracy of this information nor warrant the condition of the vessel. A buyer should instruct his representatives, agents, or his surveyors, to investigate such details as the buyer desires validated. This vessel or yacht is offered subject to prior sale, price change, or withdrawal without notice.

PHOTOS

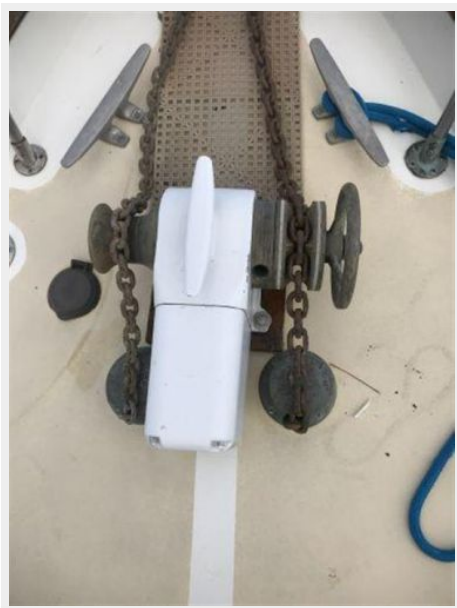
2



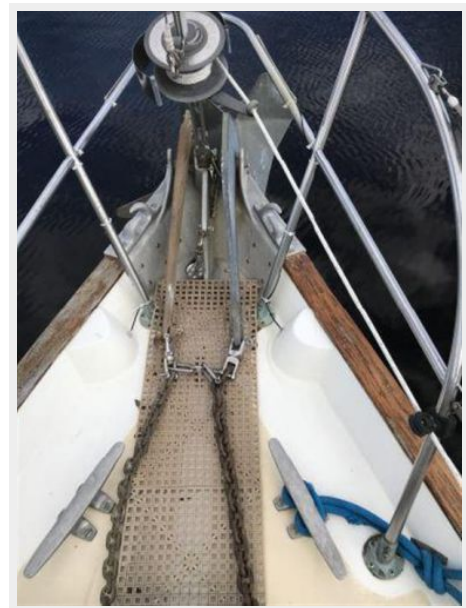
3



4



5



6



7



9



8



10



11



12



13



14



15



16



17



18



19



20



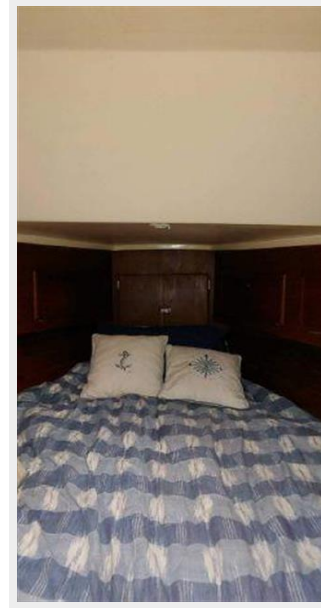
21



22



23



CONTACTS

Andrey Shestakov, leading yacht broker of the sales department of Shestakov Yacht Sales Inc. Shestakov Yacht Sales Inc., the official representative of the Miami/Fort Lauderdale FL headquarters.

Contact details

Email: **andrey@shestakovyachtsales.com**

Web: shestakovyachtsales.com/en/

Telephones

USA: **+1(954)274-4435**

Office hours

Monday – Saturday: **9:00 - 21:00 EDT**

Sunday: **closed**

Address



Harbour Towne Marina, 850 NE 3rd St,
STE 213, Dania, FL 33004