

## VOYAGER II — WHITBY BOAT WORKS



**Судостроитель:** WHITBY BOAT WORKS

**Год постройки:** 1981

**Модель:** Center Cockpit

**Цена:** ЦЕНА ЯХТЫ ПО ЗАПРОСУ

**Местонахождение:** United States

**Длина общая:** 42' 0" (12.80m)

**Ширина:** 13' 0" (3.96m)

**Мин. осадка:** 5' 8" (1.73m)

Купить **Voyager II — WHITBY BOAT WORKS** а также выбрать подходящую вам яхту из нашего каталога яхт вам поможет опытный яхтенный брокер Андрей Шестаков. На сегодняшний день компания **Shestakov Yacht Sales Inc.** имеет большое количество яхт в собственном списке продаж, а также тесно сотрудничает со всеми крупными яхтенными производителями по всему миру.

Для того чтобы купить яхту **Voyager II — WHITBY BOAT WORKS** а также проконсультироваться по любому вопросу связанному с покупкой, продажей, чартером яхт позвоните по телефону **+7(918)465-66-44**.

# ОГЛАВЛЕНИЕ

---

ОГЛАВЛЕНИЕ	2
ХАРАКТЕРИСТИКИ	4
Обзор	4
Основная информация	4
Размеры	4
Скорость, вместимость и масса	4
Размещение	4
Корпус и палуба	5
Информация о двигателе	5
ПОДРОБНОЕ ОПИСАНИЕ	6
Overview	6
Исключения	8
Отказ от ответственности	9
ФОТОГРАФИИ	10
2	10
3	10
4	10
5	10
6	11
7	11
9	11
8	11
10	12
11	12
12	12
13	12
14	13
15	13

---

16	13
17	13
18	14
19	14
20	14
21	14
22	15
23	15
<b>КОНТАКТЫ</b>	<b>16</b>
Контактная информация	16
Телефоны	16
Время работы	16
Адрес	16

# ХАРАКТЕРИСТИКИ

## Обзор

The Whitby 42 has a modern center cockpit/aft stateroom with a pass-through. Forward is a large V-berth and day head with shared shower. In the salon, an L-shaped settee dinette arrangement is offset by a long port-side settee and proper mid-ship bunk. A U-shaped galley is aft to port. The aft cabin has a full width bunk with an ensuite head. The entire boat is paneled with beautiful, classically stained teak finishes, giving the vessel a rather salty and homey feel. 2018 Survey available

## Основная информация

Тип судна: Center Cockpit

Модельный год: 1981

Год постройки: 1981

Страна: United States

## Размеры

Длина общая: 42' 0" (12.80m)

Длина по ватерлинии: 32' 8" (9.96m)

Ширина: 13' 0" (3.96m)

Мин. осадка: 5' 8" (1.73m)

## Скорость, вместимость и масса

Водоизмещение: 32000 Pounds

Вместимость воды: 290 Gallons

Вместимость сточного бака: 40 Gallons

Объем топливного бака: 200 Gallons

## Размещение

Всего кают: 2

Всего коек: 7

Всего ком. состава: 2

## Корпус и палуба

---

**Материал корпуса:** Fiberglass

## Информация о двигателе

---

**Двигатели:** 1

**Производитель:** Lehman

**Модель:** 4D254

**Тип двигателя:** Inboard

**Тип топлива:** Diesel

---

# ПОДРОБНОЕ ОПИСАНИЕ

---

## Overview

---

### Electronics and Navigation Equipment

- Ritchie magnetic compass
- Garmin GPSMap 441S chartplotter & sounder
- Furuno 1623 Radar
- Standard Horizon Intrepid VHF with remote mic
- Autohelm ST6000 autopilot
- Furuno FS-1502 SSB

### Sails and Canvas

- Sails - Quantum Dacron:
- 135% Genoa
- Main
- Mizzen

### Canvas

- Jib UV strip
- Main and mizzen sail covers
- Cockpit bimini (canvas on stainless-steel frame)
- Cockpit dodger and sides (canvas and Eisenglass)

### Electrical

- Xantrex/PRO XM1800 inverter
- AC power 1800 watt

- Xantrex TC6012 batter charger
- House bank: 4 x Trojan T-105 225 ah each (total 450 ah)
- Starter battery: Group 24 550 cca

## Accommodations and Layout

Headroom is 6'6" or better, throughout the boat and storage capacity can only be noted as "incredible". Beautiful teak joinery throughout, and the cabin sole is teak and holly plank.

VOYAGER II sleeps up to seven people in accommodations with the forward cabin, main salon and large private owners cabin. The unique aft cabin design with separate cockpit entrance and private owners head and shower is a signature of the WHITBY 42. There is extensive storage in the form of shelves, hanging lockers and drawers throughout and she features private accommodations for two couples in separate cabins, plus settee berths in the main cabin.

In the main cabin, which can be accessed by "walk-through" from the owners private cabin, or by the cockpit companionway, immediately to port of the companionway, you will find the classic "wrap around" "U" shape configured, offshore safe galley, that will delight the gourmet, whether at sea or dockside, drawers, double deep Stainless steel sinks, cutting board, extensive louvered lockers, large dry storage bin, built in microwave, custom built spice rack, wine glass rack, pot and pan dry storage, large dry food cupboard, fully gimballed stove and generous counter space, and even a garbage bin, a feature that the seasoned cruiser really appreciates!

The galley is a cooks dream, with a good sized storage cabinet, large opening hatch for light and ventilation overhead, two ports over the stove area for added light and ventilation.

Directly across from the galley, to starboard, is a proper offshore, forward facing navigation station and large desk chart table, which would house plenty of charts inside and tremendous room for an exceptional compliment of navigation and electronic equipment for easy use while navigating.

The large Nav table/desk has a generous storage locker under the desk top and room for the additional electronic navigation and communication equipment outboard. The nav seat has a large storage compartment underneath, a handy place for emergency tools and equipment. Next

aft and proceeding from the salon through the walk-through on the starboard side, outboard is a workbench with additional chart stowage under, bookcase and electrical panel above. It also provides access to the walk in engine room that is underneath the cockpit sole by way of inboard double access doors to the engine room.

The master stateroom is all the way aft and has large twin berths port and starboard or by use of the filler piece, one large queen berth athwartship, double hanging lockers, and storage space, and ample drawers, along with an enclosed head with sink and shower head. This type of athwartship bunk is designed for sleeping on either tack and makes for a good sea berth and those seasoned offshore sailors will tell any novice sailor that the best sleeping is in the aft cabin. To port there is a second companionway from this stateroom up to the cockpit. Under the ladder there is room for storage for companionway slides and screens. 17 opening ports and 3 hatches provide tremendous ventilation and light.

Amidships is the main salon which features a beautiful L-shaped settee with dining table (table folds up against bulkhead when not in use), and drawers below. Settee slides out to make a double berth. Opposite to starboard is a bench settee which makes into a double berth, with storage outboard, drawers and wine rack with fold out cocktail table.

Proceeding forward, the guest head/shower is to port, accessible from either the salon or directly from the guest stateroom. Opposite, is a storage locker and a hanging locker. The guest stateroom has large V-berth with filler piece, and drawers under and storage above port and starboard. There is an overhead hatch as well as opening ports.

There are 17 opening ports, with screens and 2 opening deck hatches, plus the companionway hatch which provides a tremendous amount of light and superior cross ventilation. There are also 4 S/S dorade vents, and a ventilator in each head. Below deck ventilation far surpasses the standards in the industry.

Updates June 2020

New Batteries

New Alternator

---

## Исключения

---



При продаже яхты исключаются личные вещи владельца.

## **Отказ от ответственности**

---

Компания предоставляет описание судна или яхты добросовестно, но не может гарантировать точность этой информации, а также не ручается за техническое состояние. Покупатель должен проинструктировать своих агентов или оценщиков исследовать представленную информацию более подробно, по собственному желанию. Продажа судна или яхты, изменение цены или снятие с продажи будет происходить без предварительного уведомления.

# ФОТОГРАФИИ

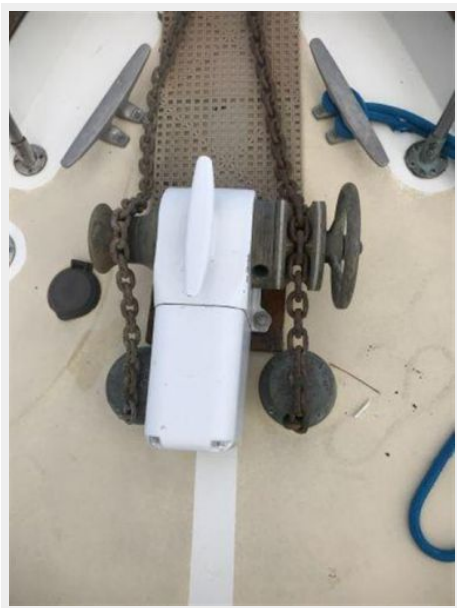
2



3



4



5



6



7



8



9



10



11



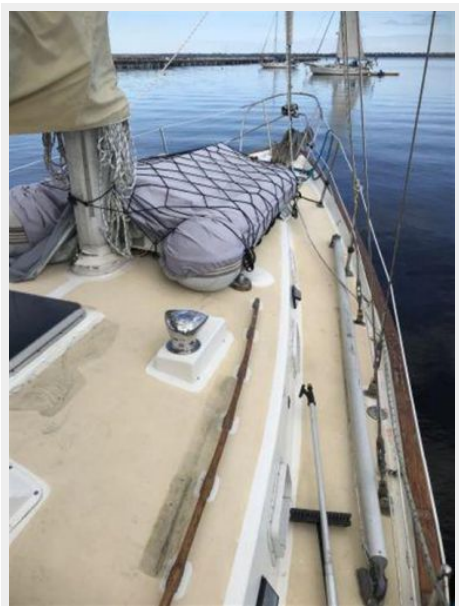
12



13



14



15



16



17



18



19



20



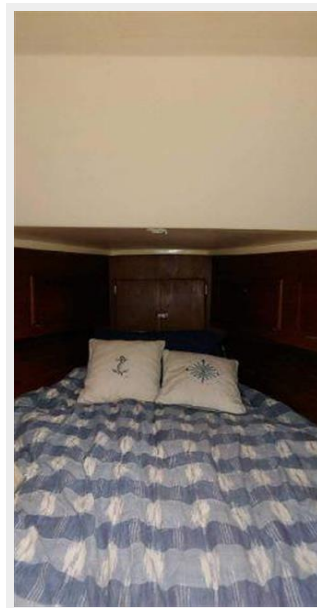
21



22



23



# КОНТАКТЫ

---

Андрей Шестаков (Andrey Shestakov) – ведущий яхтенный брокер отдела продаж яхт и судов компании Shestakov Yacht Sales Inc. Официальный представитель Shestakov Yacht Sales Inc. для русскоговорящих клиентов в центральном офисе компании в Майами/Форт Лодердейл/Флорида/США.

## Контактная информация

---

Email: [andrey@shestakovyachtsales.com](mailto:andrey@shestakovyachtsales.com)

Web: [shestakovyachtsales.com](http://shestakovyachtsales.com)

## Телефоны

---

Краснодарский край: **+7(918)465-66-44**

США, Майами, Флорида: **+1(954)274-4435**

## Время работы

---

Понедельник – Суббота: **9:00 - 21:00**  
EDT

Воскресенье: **Закрито**

## Адрес

---



Harbour Towne Marina, 850 NE 3rd St,  
STE 213, Dania, FL 33004