

NO NAME — CUTWATER



Builder: Cutwater

Year Built: 2017

Model: Cruising Yacht

Price: PRICE ON APPLICATION

Location: United States

LOA: 24' 0" (7.32m)

Beam: 8' 6" (2.59m)

Max Draft: 2' 6" (0.76m)

Our experienced yacht broker, Andrey Shestakov, will help you choose and buy a yacht that best suits your needs **No Name — Cutwater** from our catalogue. Presently, at Shestakov Yacht Sales Inc., we have a wide variety of yachts available on our sale's list. We also work in close contact with all the big yacht manufacturers from all over the world.

If you would like to buy a yacht **No Name — Cutwater** or would like help answering any questions concerning purchasing, selling or chartering a yacht, please call **+1(954)274-4435**

TABLE OF CONTENTS

TABLE OF CONTENTS	2
SPECIFICATIONS	4
Overview	4
Basic Information	4
Dimensions	4
Speed, Capacities and Weight	4
Accommodations	5
Hull and Deck Information	5
Engine Information	5
PHOTOS	6
7644029_20201102075306057_1_XLARGE	6
7644029_20201102075321272_1_XLARGE	6
7644029_20201102075307104_1_XLARGE	6
7644029_20201102075309135_1_XLARGE	6
7644029_20201102075303058_1_XLARGE	6
7644029_20201102075319130_1_XLARGE	6
7644029_20201102075320158_1_XLARGE	7
7644029_20201102075316114_1_XLARGE	7
7644029_20201102075318115_1_XLARGE	7
7644029_20201102075317117_1_XLARGE	7
7644029_20201102075314065_1_XLARGE	7
7644029_20201102075315111_1_XLARGE	7
7644029_20201102075310217_1_XLARGE	8
7644029_20201102075312224_1_XLARGE	8
CONTACTS	9
Contact details	9
Telephones	9
Office hours	9

Address

9

SPECIFICATIONS

Overview

2017 Cutwater 242 Sport Coupe located in Jacksonville, FL

Unique design and engineering, impeccable quality.

Air conditioning and heat. Generator.

Deck and hardtop vents. Bow thruster. Full galley. Bow and stern swim ladders.

GPS, VHF, fish/depth finder, stereo.

Fold down aft cockpit seat. Baitwell and sink.

Includes tandem axle aluminum trailer.

Basic Information

Category: Cruising Yacht

Sub Category: Coupe

Model Year: 2017

Year Built: 2017

Country: United States

Cockpit: Yes

Dimensions

LOA: 24' 0" (7.32m)

Beam: 8' 6" (2.59m)

Max Draft: 2' 6" (0.76m)

Speed, Capacities and Weight

Displacement: 4900 Pounds

Water Capacity: 30 Gallons

Holding Tank: 11 Gallons

Fuel Capacity: 116 Gallons

Accommodations

Total Cabins: 1

Hull and Deck Information

Hull Material: Fiberglass

Engine Information

Engines: 1

Manufacturer: Yamaha

Model: F300

Engine Type: Outboard

Fuel Type: Gas/Petrol

PHOTOS

7644029_20201102075306057_1_XLARGE



7644029_20201102075321272_1_XLARGE



7644029_20201102075307104_1_XLARGE



7644029_20201102075309135_1_XLARGE



7644029_20201102075303058_1_XLARGE



7644029_20201102075319130_1_XLARGE



7644029_20201102075320158_1_XLARGE



7644029_20201102075316114_1_XLARGE



7644029_20201102075318115_1_XLARGE



7644029_20201102075317117_1_XLARGE



7644029_20201102075314065_1_XLARGE

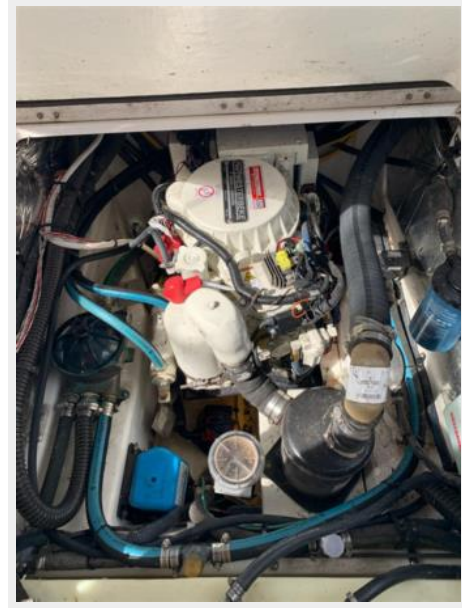


7644029_20201102075315111_1_XLARGE



7644029_20201102075310217_1_XLARGE

7644029_20201102075312224_1_XLARGE



CONTACTS

Andrey Shestakov, leading yacht broker of the sales department of Shestakov Yacht Sales Inc. Shestakov Yacht Sales Inc., the official representative of the Miami/Fort Lauderdale FL headquarters.

Contact details

Email: andrey@shestakovyachtsales.com

Web: shestakovyachtsales.com/en/

Telephones

USA: +1(954)274-4435

Office hours

Monday – Saturday: **9:00 - 21:00** EDT

Sunday: **closed**

Address



Harbour Towne Marina, 850 NE 3rd St,
STE 213, Dania, FL 33004