

## RESOLUTE — KADEY KROGEN



**Судостроитель:** KADEY KROGEN

**Год постройки:** 1994

**Модель:** Моторная яхта

**Цена:** **ЦЕНА ЯХТЫ ПО ЗАПРОСУ**

**Местонахождение:** United States

**Длина общая:** 42' 4" (12.90m)

**Ширина:** 15' 0" (4.57m)

**Макс. осадка:** 4' 7" (1.40m)

Купить **Resolute — KADEY KROGEN** а также выбрать подходящую вам яхту из нашего каталога яхт вам поможет опытный яхтенный брокер Андрей Шестаков. На сегодняшний день компания **Shestakov Yacht Sales Inc.** имеет большое количество яхт в собственном списке продаж, а также тесно сотрудничает со всеми крупными яхтенными производителями по всему миру.

Для того чтобы купить яхту **Resolute — KADEY KROGEN** а также проконсультироваться по любому вопросу связанному с покупкой, продажей, чартером яхт позвоните по телефону **+7(918)465-66-44**.

# ОГЛАВЛЕНИЕ

ОГЛАВЛЕНИЕ	2
ХАРАКТЕРИСТИКИ	3
Обзор	3
Основная информация	3
Размеры	3
Скорость, вместимость и масса	3
Размещение	3
Корпус и палуба	4
Информация о двигателе	4
ПОДРОБНОЕ ОПИСАНИЕ	5
Description	5
Specification	5
Remarks	12
Exclusions	12
Mechanical Disclaimer	12
Disclaimer	13
Исключения	13
Отказ от ответственности	13
ФОТОГРАФИИ	14
КОНТАКТЫ	25
Контактная информация	25
Телефоны	25
Время работы	25
Адрес	25

# ХАРАКТЕРИСТИКИ

## Обзор

## Основная информация

Тип судна: Моторная яхта	Подкатегория: Водоизмещение
Модельный год: 1995	Год постройки: 1994
Страна: United States	Открытая палуба мостика: Да

## Размеры

Длина общая: 42' 4" (12.90m)	Длина по ватерлинии: 39' 2" (11.94m)
Ширина: 15' 0" (4.57m)	Макс. осадка: 4' 7" (1.40m)
Трапы: 23' 0" (7.01m)	

## Скорость, вместимость и масса

Водоизмещение: 40000 Pounds	Чистый вес: 32 Pounds
Вместимость воды: 360 Gallons	Вместимость сточного бака: 40 Gallons
Объем топливного бака: 700 Gallons	

## Размещение

Всего кают: 2	Всего коек: 4
Спальные места: 6	Всего ком. состава: 1

## Корпус и палуба

---

**Материал корпуса:** Fiberglass

**Материал палубы:** Fiberglass

**Комплектация корпуса:** Full Displacement

## Информация о двигателе

---

**Двигатели:** 1

**Производитель:** Perkins

**Модель:** M135

**Тип двигателя:** Inboard

**Тип топлива:** Diesel

---

# ПОДРОБНОЕ ОПИСАНИЕ

---

## Description

---

### **THE 42 KADEY KROGEN WIDEBODY IS ONE OF THE MOST VERSATILE AND WELL DESIGNED TRAWLERS EVER**

With the focus on the ability to relax and socialize in Heightened Comfort, Style and Sophistication, this 42 exemplifies what anyone would desire in a Trawler like this. Equipped with a 2 Stateroom 1 Head Layout and extra amenities not normally found on a yacht of this size.

ONLY TWO OWNERS SINCE NEW, truly one of the best options on the market for a 42 Widebody. Don't Miss The Opportunity To Own One Of The Most Versatile Trawlers ever built. "Resolute" could be at your marina this Summer. Schedule Your Appointment Before She Is Sold.

### **KEY FEATURES:**

**ONLY TWO OWNERS SINCE NEW!!**

**SELF-RIGHTING UP TO 85° - BALLASTED FULL KEEL DISPLACEMENT HULL!!**

**SOLID FIBREGLASS HULL BELOW WATERLINE!!**

**INCREDIBLE STABILITY WITH OVER 3000 NM RANGE!!**

**2 STATEROOMS WITH 1 FULL HEAD LAYOUT - SLEEPS 6!!**

**EXTREMELY FUNCTIONAL OPEN GALLEY DESIGN!!**

**6' 6" HEADROOM THROUGHOUT!!**

**UPGRADED - (2) NEW DIAMOND SEA GLAZE 3/8" THICK SALON WINDOWS!!**

**NEW DAVIT SET MADE BY KATO MARINE!!**

**XANTREX FREEDOM 458 INVERTER/CHARGER NEW 2019!!**

**2018 10' ZODIAC RIB WITH 4 STROKE 2HP OUTBOARD!!**

**THEY HAVE FOUND THEIR NEXT YACHT - MOTIVATED TO SELL!!**

## Specification

---

### Key Highlights And Recent Service

- ONLY TWO OWNERS SINCE NEW
- SELF-RIGHTING UP TO 85° - BALLASTED FULL KEEL DISPLACEMENT HULL
- SOLID FIBREGLASS HULL BELOW WATERLINE
- INCREDIBLE STABILITY WITH OVER 3000 NM RANGE
- 2 STATEROOMS WITH 1 FULL HEAD LAYOUT - SLEEPS 6
- EXTREMELY FUNCTIONAL OPEN GALLEY DESIGN
- 6' 6" HEADROOM THROUGHOUT
- UPGRADED - (2) NEW DIAMOND SEA GLAZE 3/8" THICK SALON WINDOWS
- NEW DAVIT SET MADE BY KATO MARINE
- XANTREX FREEDOM 458 INVERTER/CHARGER NEW 2019
- 2018 10' ZODIAC RIB WITH 4 STROKE 2HP OUTBOARD
  
- IMPROVED ENGINE ROOM LAYOUT WITH CARPETING
- UPGRADED LED INTERIOR LIGHTING
- LARGE SS PORT LIGHTS
- ALL INTAKES PROTECTED BY BRONZE SENDOR ANT-NETTLE/ANTI-ELL-GRASS SCREENS
- EXTRA HAUSE CLEATS OPPOSITE FORE-DECK SEAT/LOCKER
- DAMPER PLATE REPLACED APPROXIMATELY 300 HOURS AGO
- EXTREMELY QUIET AND VERY RELIABLE EQUIPMENT
- INCREDIBLY ECONOMICAL CRUISING, 4+ NM/GALLON @7.25 KNOTS

### **1995 Wide Body 42' Kadey-Krogen Trawler - Hull #186**

Fuel - Diesel

Hull Material - Fiberglass

Beam - 15'

Max Draft – 4' 7"

Engine Make – Perkins

Engine Model – M135 Naturally Aspirated

Fuel Capacity – 700 gallons

Length at Waterline – 39' 2"

Length Overall – 42' 4"

Holding Tank Size – 40 gallons

Water Capacity – 360 gallons

Engine Hours – 8,000 October 2020

Number of Engines - 1

Gross Tonnage: 32

Net Tonnage: 26

## Salon

Beautiful open design, entering the Salon from the aft deck you have an L-Shaped couch on the starboard side that converts to a dinette. Drawer storage at the forward end of the couch and an enclosed TV cabinet forward integrated in the Galley bar. Lots of drawer storage everywhere, on the port side is a 3 person couch and just forward a desk, bookshelf and cabinet.

- New Custom Wool Carpet
- Built-in dinette and sofa with built-in storage under all seats
- Built-in 19" color TV
- Bose Wave Sound System
- High-efficiency 120v florescent wall lamps
- Built-in Bar and Library
- Large area rug
- Xantrex Link 2000-R regulator

## Galley

Forward of the salon is a very spacious open Galley with large appliances and full-size refrigerator and freezer. Tremendous storage everywhere you look, perfect for long voyages. Everything you would need to satisfy everyone onboard.

- Alpenglow overhead dimmable LED light with Red and White option for night operation or normal evening light
- New Princess Electric 120v Stove with glasstop 3 burner range and SS Hood
- (2) 120v duplex sockets with GFI protection
- Built-in 600W Microwave Oven
- Toaster
- Upright 11 cubic foot high-efficiency GE refrigerator/freezer – draws <1.8amp 120v with a 0.25 duty cycle
- Custom shelving in upper cabinets for extra storage
- Built-in spice rack over Refrigerator
- Custom racks for convenient seaworthy storage of glass tumblers and goblets
- High-efficiency 12v LED lamp over sink
- Lots of storage fitted with optimum sized plastic food containers
- Corelle plates, bowls and mugs, SS flatware and knives
- Built-in bar with custom container partitions
- Large SS sink with single lever faucet/spray head
- 12v DC Convenience light in the cabinet under sink

## Pilot House

Forward of the Salon and Galley, up 3 steps you enter an extremely large pilothouse. Windows all around you have fantastic visibility and on both port and starboard sides you have entry doors to quickly access the side decks to the stern or bow. All the necessary navigational equipment and gauges are located here to help you safely navigate to your next destination. The pilothouse seat opens to comfortably sleep 2 additional guests.

- Comfortable seating with ample storage space for charts, safety vests and instruments
- Pilothouse seat opens to comfortably sleep 2 additional guests.
- Alpenglow overhead dimmable LED light with Red and White option for night operation or normal evening light
- Wiper control / bow thruster control / engine control
- Shakespeare Super Halo Cell Booster
- Garmin AIS 600 (Transmit and Receive)
- Garmin GPSMAP chart plotter
- Garmin GWS 10 wind sensor
- Simrad Autopilot with 1300X 40 heavy-duty Junction/Control unit (control from pilothouse or with handheld from flybridge)
- (1) Cetrek 102' programable master/slave depth sounder
- (2) Humingbird "Wide One Hundred" Fish Finder/Depth Sounders
- Raytheon 4kw Radar with Flux Valve stabilized 24" Radome Antenna
- ICOM M604A VHF Radio with a SS 3db 34" whip antenna
- ICOM 710 SSB HF Radio with AT300 automatic antenna tuner, manual MFJ RF Ground tuner and Pactor-Ilex modem with an integrated DELL PC and 23' Shakespeare Galaxy Antenna
- (1) Richie Flush Mounted spherical compass with 4.5" card
- Built-in Navigation Buoy protocol memory aid
- Complete VDO engine instrumentation
- Port in-line chart table light
- Map light
- LED night lights for both switch panels
- Extra starboard side electric chase
- Window privacy/sunscreens
- Hell Hole: 12vDC dome light and optimized storage system

## Head

Down 2 steps from the Galley and to the port side is the spacious Full Head and Stall Shower.

- SeaLand Vacuflush
- Holding Tank Monitor
- Built-in fluorescent lights on either side of the medicine cabinet
- Built-in red LED night lights
- Large storage shelf under vanity – stores 13 rolls of paper towels and 12 rolls of toilet paper



- Large First Aid Kits stored on the removable shelf behind Washer and Dryer
- Built-in bronze steps allow easy access to the back of the Washer and Drier
- Single lever shower mixer control
- Custom built-in towel bars

## Guest Stateroom

On the port side opposite the head is the Guest Suite. Incredibly designed, during the day it can become a cozy office/study with a desk/computer station, bookshelves and sofa. At night a Pullman-Berth can be lowered from the forward bulkhead and the sofa base can be extended out with an additional cushion to sleep 2 additional guests.

## Master Stateroom

This preferred layout has a very spacious and comfortable master stateroom. Equipped with a Queen Island berth and custom made mattress with a detachable pillow top. Also located in the stateroom is a dressing table, two large hanging lockers, many cupboards and vanity/desk with a large mirror.

## Lazarette

- Custom built-in egg crate partitions that provide convenient, orderly storage of water hoses, electrical cords etc
- (2) Built-in rope reels to store spare anchor rodes
- (12) Large SS hooks to hang and store dock lines
- Custom built in step that provides a convenient entry with protective shield for the rubber head instrumentation and storage for maintenance liquids

## Foredeck

- Bow Sprit – cutaway and reinforced to allow automatic, convenient deployment and retrieval of the primary and secondary anchors
- FDB-3 Ideal Horizontal Windlass with 4 sets of remote Up/Down switches and control switches in the pilothouse and flybridge
- (2) Extra hause cleats opposite the foredeck seat locker
- (2) 10" SS cleats on top of the windlass
- Mantus Anchor Bow Roller BR 2 with anchormate
- Rocna Vulcan 25VG main anchor (55lbs) on 3/8" chain
- (4) fenders in racks
- High-efficiency washdown pump and hose
- (2) Rearview mirrors, Safety Rail mounted

## Flybridge

- (1) Richie Flush-mounted spherical compass with 4.5" card
- Dedicated hummingbird depts sounder plus slaved Cetreck Depth Sounder
- Complete VDO engine instrumentation

- ICOM IC-M58 transceiver
- Bimini top with aft stiff support bars
- Pedestal helm chair (mounted over a large heavy-duty aluminum backing plate) with snap-on cushions
- Snap-on storage seat cushions
- (2) VHF SS 34" mast-mounted whip antennas
- (1) SSB HF 23" Shakespear Galaxy Antenna
- (2) Spreader lights
- Rule "topping and direct lift" windlass on cargo Mast/Boom
- 2018 10' Zodiac Cadet RIB with 4 stroke 2hp Honda O/B
- (4) SS rain gutter spouts

## Engine Room

- Perkins M135 - 135 HP Naturally Aspirated with Bowmar freshwater cooling system – 8000 approximate hours - October 2020
- Dual Racor 220 engine preliminary fuel filters with vacuum gauge and single lever switching
- 100A Balmar alternator with Hart Link 2000R regulator
- Vernalift water-lift exhaust system
- Coolant recovery system
- Dedicated gear-driven VDO tachometer signal generator
- Built-in Lube Oil Extraction Pump
- Custom SS Shield for propellor shaft coupler
- 12.5 KW Kohler Generator with instrument panel in the salon –2080 approximate hours – October 2020
- Bow Thruster Vetus BOW 9512D with 3 heavy-duty batteries charged by ProMariner ProNautic 12150P. Controls in pilothouse and flybridge
- Xantrex Freedom 458 inverter/charger with Xantrex Link 2000-R regulator in salon - installed Sept, 2019
- Racor 220 preliminary fuel filter
- Vernalift water lift exhaust system
- Coolant recovery system
- (2) Large, 6 each battery boxes (Port and Stbd) with deep-cycle batteries
- All electrical circuits properly fused
- Independent Newmar Battery Charter – 50am, 3 phase
- (2) Axial flow cooling fans – 1 induction and 1 exhaust
- Seward hot water heater 11 gallon
- (1) Shurflow 4 gal/min domestic freshwater pump
- (5) 120v AC duplex convenience outlets w GFI protection
- Dual Racor 2000 Fuel Polishing System
- Calibrated Fuel Tank Sight Gauges
- Custom workbench with grinder and vise
- Built-in storage for used engine lube oil (10 gallons)

- Extensive spare parts storage
- Carpeting on the deck
- Drinking-Water Filter that feeds Galley sink

## General Equipment

- Built-in stacked GE Washer/Drier with built-in 12v florescent convenience light
- (2) Reverse cycle Air Conditioning systems – 16 KBTU and 12 KBTU
- Dual front and rear 240v 50amp shore power connects
- Dual front and rear dock water connects
- Bronze long stem through-hull sonic transducers – (2) forward and (2) aft
- (5) Fire extinguishers
- Cockpit sunscreen curtain
- Aft and side decks fiberglass covered with teak
- Bow deck fiberglass
- Flopper-Stopper with 9' Aluminum extender boom (for use at anchor)
- (1) Steadying sail
  
- Cargo mast customized for easy lowering, convenient Dinghy retrieval and setting/control of steading and riding sails
- Built-in Cylinder Security Safe with combination lock (12" D x 12" L)
- Eureka lightweight upright vacuum cleaner
- Shopvac 1 gallon
- (2) Aluminum Boat Poles
- (2) Sliding wire basket/drawers under master stateroom bed
- (1) Sweet Air system for deodorizing holding tank
- 18" SS Rub Strakes inboard and outboard of each Halse Cleat to prevent cap rail rope burn
- Fore and aft high-water bilge alarms
- Customized folding swim ladder – permanently attached to the Swim Platform
- (1) Life sling with 50' of floating tow line
- (3) Special Purpose fenders
- Swim Platform fender strip 12'
- (4) Fender boards
- Emergency tiller with ready to go control tackle
- (12) Strategically positioned 10" SS handholds
- Compartment behind Washer/Drier fitted with bronze transom steps for easy access and wire mesh shelving holding 2 large watertight first aid kits
- (1) Outside brass thermometer
- (2) Weams & Plath brass quartz ship clock
- (1) Weams & Plath brass barometer
- Deck Power Cords, 240v, (1) 25' and (1) 50'
- Smart "Y" to combine two 120v lines into one 240v line
- Built-in Ground Isolator
- Dock lines

- Convenient and safe, single-handed cargo mast lowering system

## Tools

- General hand and rigging tools
- Volt/Ohm/Amp multimeter
- Workmate Shopbox workbench/storage box
- (10) metric and SAE box/open-end wrenches
- (2) Custom 3.5" SS open-end wrenches for adjusting propellor shaft stuffing box

## Spares

- (1) Hart Link 2000R Invertor/Battery Charger/Alternator control/monitor
- (1) Balmar 3 step alternator control
- Alternator repair diodes, brushes and bearings
- Fire extinguishers
- (6) Main Engine injectors
- (1) Main Engine Fresh Water Cooling Pump
- Main Engine Salt Water Cooling Pump
- Holding Tank Macerator Pump
- Rain Spouts
- Anchor Rodes
- Vacuflush various spare electrical parts, toilet parts and spare pump
- Fuses, bulbs, belts and filters
- Windlass spare motor, clutch plate and various electrical parts

## Remarks

---

**An Outstanding Example of Kadey Krogen incredible Style and Special Attention To Detail. With a 2 stateroom 1 full head layout and spacious exterior areas, this yacht offers everything you would want to cruise in absolute comfort. Don't Let This Opportunity Pass You By. She is easy to see 7 days a week, Schedule your appointment today.**

## Exclusions

---

Owners personal effects, art and decorations. Including the wood carving above the countertop in the galley. A full list will be provided upon signed agreement.

## Mechanical Disclaimer

---

Engine hours are a representation of what the listing broker has been supplied by the owner and/or actual reading of the engine hour meters. The broker cannot guarantee the true hours. It is the responsibility of the purchaser to verify engine hours, major overhauls and all other

representations noted on the listing brochure.

---

## **Disclaimer**

---

The Company offers the details of this vessel in good faith but cannot guarantee or warrant the accuracy of this information nor warrant the condition of the vessel. A buyer should instruct his agents, or his surveyors, to investigate such details as the buyer desires validated. Hours listed may vary from actual hours due to recent use. Purchaser is encouraged to verify hours prior to purchase. This vessel is offered subject to prior sale, price change, or withdrawal without notice.

---

## **Исключения**

---

При продаже яхты исключаются личные вещи владельца.

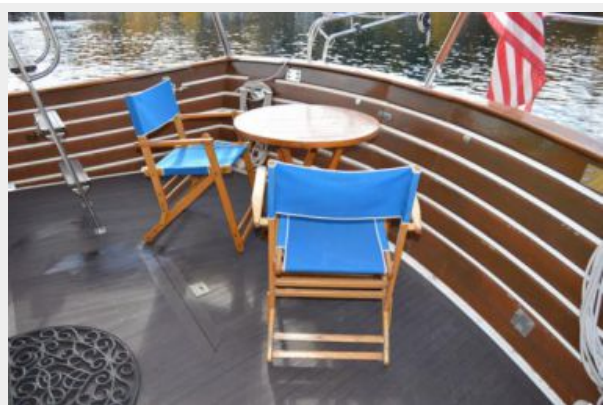
---

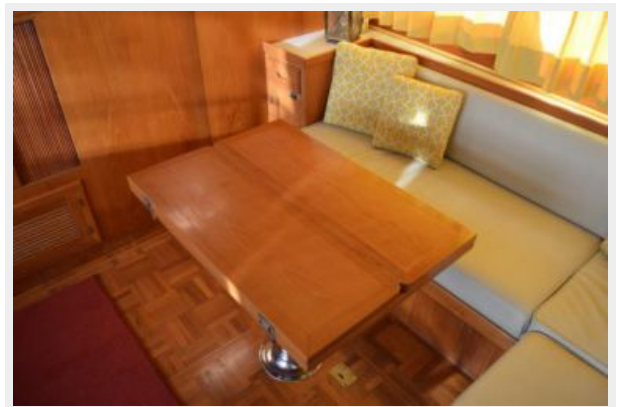
## **Отказ от ответственности**

---

Компания предоставляет описание судна или яхты добросовестно, но не может гарантировать точность этой информации, а также не ручается за техническое состояние. Покупатель должен проинструктировать своих агентов или оценщиков исследовать представленную информацию более подробно, по собственному желанию. Продажа судна или яхты, изменение цены или снятие с продажи будет происходить без предварительного уведомления.

# ФОТОГРАФИИ

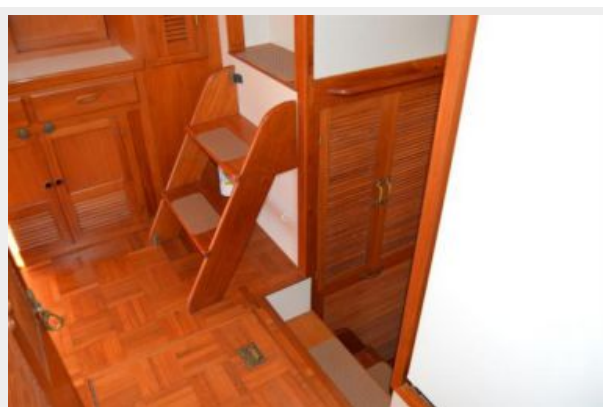






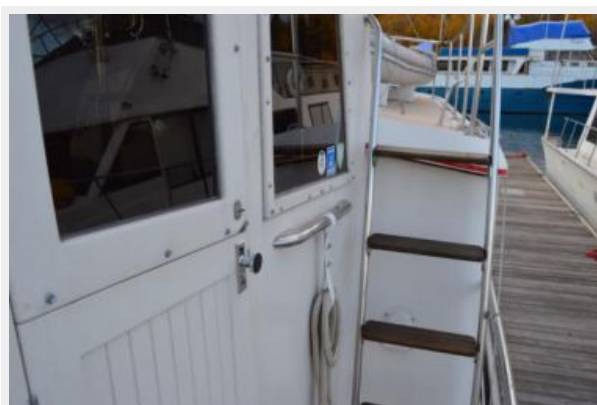
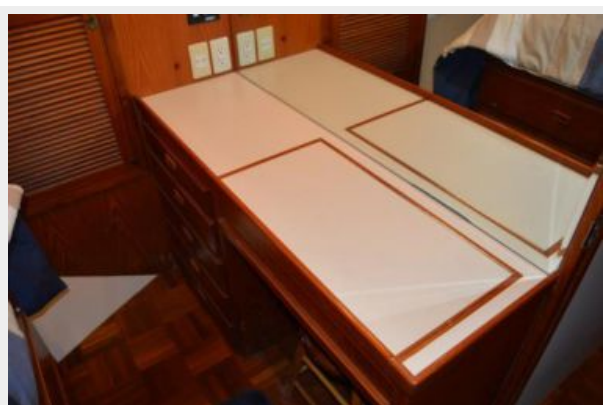
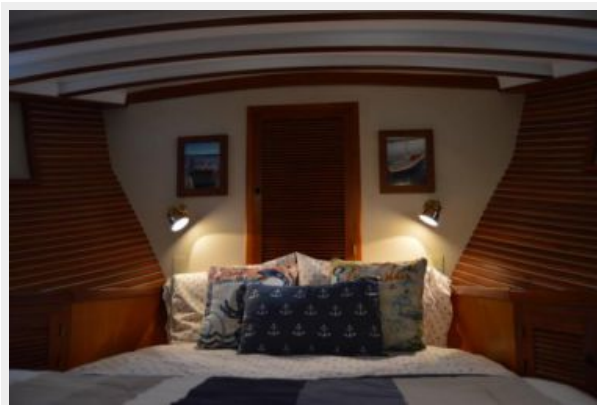
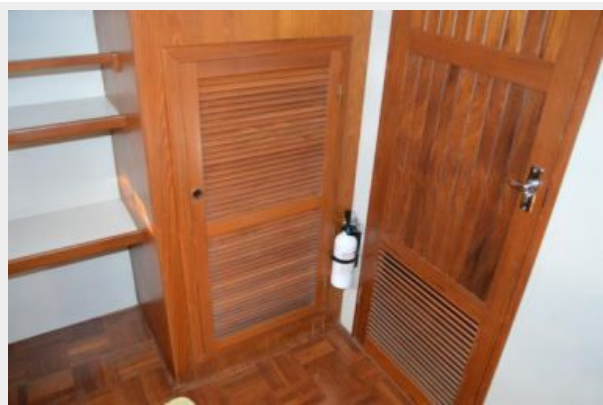


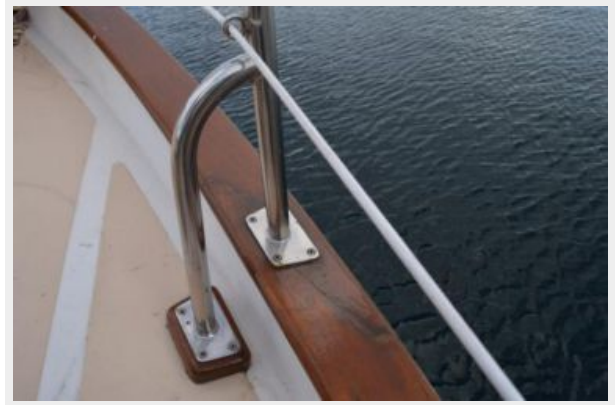
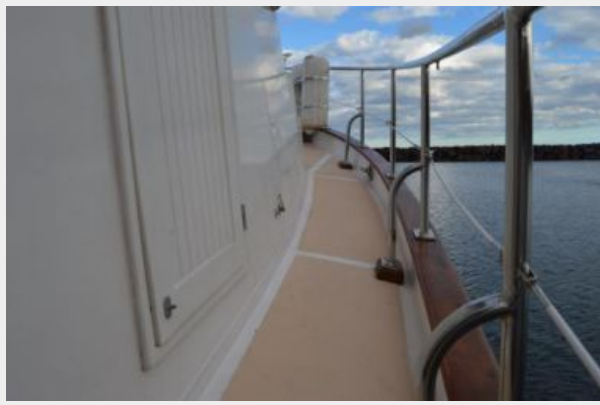


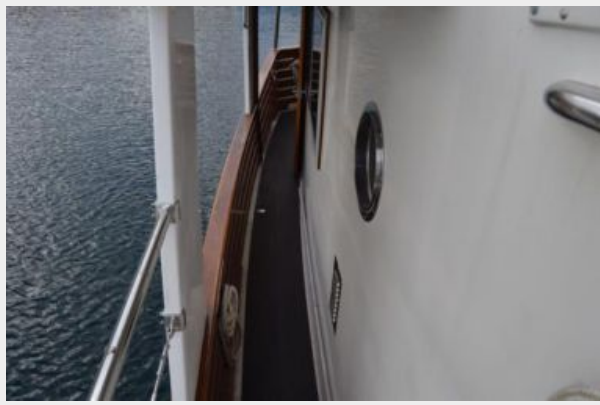
















# КОНТАКТЫ

---

Андрей Шестаков (Andrey Shestakov) – ведущий яхтенный брокер отдела продаж яхт и судов компании Shestakov Yacht Sales Inc. Официальный представитель Shestakov Yacht Sales Inc. для русскоговорящих клиентов в центральном офисе компании в Майами/Форт Лодердейл/Флорида/США.

## Контактная информация

---

Email: [andrey@shestakovyachtsales.com](mailto:andrey@shestakovyachtsales.com)

Web: [shestakovyachtsales.com](http://shestakovyachtsales.com)

## Телефоны

---

Краснодарский край: **+7(918)465-66-44**

США, Майами, Флорида: **+1(954)274-4435**

## Время работы

---

Понедельник – Суббота: **9:00 - 21:00**  
EDT

Воскресенье: **Закрето**

## Адрес

---



Harbour Towne Marina, 850 NE 3rd St,  
STE 213, Dania, FL 33004