

## MILKY WAVES — BENETEAU



**Builder:** BENETEAU

**Year Built:** 1998

**Model:** Cruising Sailboat

**Price:** PRICE ON APPLICATION

**Location:** United States

**LOA:** 38' 0" (11.58m)

**Beam:** 12' 11" (3.94m)

**Max Draft:** 5' 4" (1.63m)

Our experienced yacht broker, Andrey Shestakov, will help you choose and buy a yacht that best suits your needs **Milky Waves — BENETEAU** from our catalogue. Presently, at Shestakov Yacht Sales Inc., we have a wide variety of yachts available on our sale's list. We also work in close contact with all the big yacht manufacturers from all over the world.

If you would like to buy a yacht **Milky Waves — BENETEAU** or would like help answering any questions concerning purchasing, selling or chartering a yacht, please call **+1(954)274-4435**

# TABLE OF CONTENTS

TABLE OF CONTENTS	2
SPECIFICATIONS	7
Overview	7
Basic Information	7
Dimensions	7
Speed, Capacities and Weight	8
Accommodations	8
Hull and Deck Information	8
Engine Information	8
DETAILED INFORMATION	9
Overview	9
Exclusions	17
Disclaimer	17
PHOTOS	18
2	18
3	18
4	18
5	18
7	19
6	19
9	19
8	19
10	20
11	20
13	20
12	20
14	21
15	21

---

16	21
17	21
19	22
18	22
21	22
20	22
22	23
23	23
24	23
25	23
27	24
26	24
28	24
29	24
30	25
31	25
32	25
33	25
34	25
35	25
36	26
37	26
38	26
39	26
40	26
41	26
42	27
43	27
45	27

---

---

44	27
46	28
47	28
48	28
49	28
50	29
51	29
53	29
52	29
54	30
55	30
56	30
57	30
58	30
59	30
60	31
61	31
63	31
62	31
65	32
64	32
66	32
67	32
68	33
69	33
70	33
71	33
72	34
73	34

---

74	34
75	34
76	34
77	34
78	35
79	35
80	35
81	35
82	36
83	36
84	36
85	36
87	37
86	37
88	37
89	37
91	38
90	38
92	38
93	38
94	39
95	39
96	39
97	39
99	40
98	40
101	40
100	40
103	41

---

---

102	41
104	41
105	41
106	42
107	42
108	42
109	42
110	43
111	43
112	43
113	43
114	44
115	44
116	44
117	44
118	45
119	45
120	45
<b>CONTACTS</b>	<b>46</b>
Contact details	46
Telephones	46
Office hours	46
Address	46

---

# SPECIFICATIONS

---

## Overview

---

The Beneteau Oceanis 381 is a performance sailing yacht which corresponds well to Beneteau's philosophy on cruising. The lines of the hull are taut and the efficient shape of the hull guarantees that she will be a pleasure to helm even when cruising with the family. With her standard roller furling mainsail and above decks headsail roller furler the anchor windlass area is uncluttered. The shroud chainplates are well centered giving an efficient sheeting and angle and ease of walking forward on deck. The self-tailing winches are within arm's length of the helmsman for ease of sailing if short handed. Everything on deck has been studied and thought out from the transom door to the stem fitting to make sure the boat is an efficient yacht. From the large cockpit with steering wheel console, table with leaves and enormous lockers, mainsail track moved forward on the coachroof, molding for the extra-wide dodger and recessed windlass in the large anchor well forward. The numerous hatches and opening ports ensure perfect ventilation, without hamper crew movement on deck, who will always find handrails enabling safe movement around deck at all times. Whether you want to do long-range cruising or local weekending the 381 offers you 38' of pure boating pleasure.

## Basic Information

---

**Category:** Cruising Sailboat

**Model Year:** 1998

**Year Built:** 1998

**Country:** United States

## Dimensions

---

**LOA:** 38' 0" (11.58m)

**LWL:** 32' 10" (10.01m)

**Beam:** 12' 11" (3.94m)

**Max Draft:** 5' 4" (1.63m)

**Clearance:** 50' 0" (15.24m)

---

## Speed, Capacities and Weight

---

**Displacement:** 14991 Pounds

**Water Capacity:** 125 Gallons

**Fuel Capacity:** 39 Gallons

---

## Accommodations

---

**Total Cabins:** 2

**Total Berths:** 6

**Total Heads:** 1

---

## Hull and Deck Information

---

**Hull Material:** Fiberglass

---

## Engine Information

---

**Engines:** 1

**Manufacturer:** westerbeke

**Model:** 42B Four

**Engine Type:** Inboard

**Fuel Type:** Diesel



---

# DETAILED INFORMATION

---

## Overview

---

### Interior accommodations

#### INTERIOR WOOD:

- Cherry stained wood
- Wooden floorboards with black striping in salon
- Mattresses & cushions - high density foam with upholstery
- Wooden cabinet doors louvres
- Cabin door handles, lever type with anti-rattle plunger

#### FORWARD CABIN

- Double berth (6'7" x 4'1")
- Hanging locker to port
- Bench seat
- Shelving on hull
- Wash basin with water tap & mixer plus storage cabinet

#### SALON

- Table convertible to sleeping berth
- Storage cabinets along the hull. Book shelf on main bulkhead
- Hull sides lined with wood
- Wooden laminated companionway steps with non-skid stripping
- Pneumatic spring on companionway steps for easy access to engine
- Companionway side wooden handrails
- Headroom 6'6"

## NAV STATION

- Chart table with storage
- Navigator's seat with storage beneath
- Mounting panel for navigation instruments

## GALLEY

- Storage cabinets along hull sides
- Formica countertop with wooden fiddle rail
- Double S/S sink
- Mixing tap for hot/cold pressurized fresh water
- 12V Electric top loading freezer and front loading refrigerator
- S/S 2 burner stove with oven, and protective S/S bar

## OCEANIS 381

- Trash can

## HEAD

- 1 piece molded fiberglass liner for watertightness and easy cleaning
- Marine toilet & 15 gal holding tank
- Fiberglass wash basin, vanity cabinet, mirror and toilet accessories

## 1 AFT CABIN

- Double berth (6'7" x 5'11" / 4'11")
- Hanging locker
- Shelving on hull

## Deck gear

### S/S bow pulpit

? S/S stern rail with lifering holder and flag staff holder.

? Stern rail seats

? S/S stanchions

? (2) Sets of covered S/S lifelines with large gates

? (2) Teak handrails on coachroof

? (1) Dorade vent for ventilation of salon

? Aluminum toe-rails

? (2) Genoa tracks with adjustable cars and plunger stops

? (2) Genoa foot blocks with jammers

? (2) 48 CST Lewmar primary genoa sheet winches, mounted on cockpit coaming

- ? Roller furling genoa system, with drum installed above deck
- ? Mainsheet track on coachroof
- ? (1) 40 CST Lewmar winch for mainsheet and halyards mounted on coachroof
- ? All halyards and reefing lines led back to cockpit - genoa and main halyards are jammed off and stowed at the mast
- ? (6) Spinlock clutch stoppers on port coachroof
- ? (2) Winch handles
  
- Transom swim platform with S/S swim ladder and hinged transom door
- (1) Cockpit locker to starboard
- (1) Locker for 2 gas bottles beneath helmsman's seat to port
- (1) Locker beneath helmsman's seat to starboard
- Teak inlaid cockpit seats
- Cockpit console with wheel and compass, space for installation of electronic equipment, table with fold down leaves, drained storage compartment, and a cockpit light.
- (1) Winch handle pocket
- Cockpit shower
- Halyard neatening cleats aft of coach roof

### Standing rigging and spars

- Discontinuous S/S IX19 rigging: forestay, twin backstays, upper and lower capshrouds, intermediates and aft lower shrouds
- Shroud roller on capshrouds • Deck stepped, anodized aluminium roller furling mast
- Mast step with pivoting blocks on port and starboard, 4 aft blocks have universal swivel
- Double aft-swept spreaders
- Anodized, aluminium boom

## Mooring and anchoring

- Self-bailing chain locker with u-bolt
- Stemhead with 2 rollers
- (4) mooring cleats
- (2) spring cleats at mid-ship
- (4) fairleads (2 aft & 2 at mid-ship)
- Manual windlass - Lofrans Royal with 3/8" chain gypsy

## Plumbing and electrical

### Plumbing

- Self-bailing cockpit
- Manual bilge pump
- Electric bilge pump with automatic switch
- Ice box drained by electric pump
- Fresh water cockpit shower
- (2) fibreglass freshwater tanks integrated in hull grid, total 127 gal
- Labelled anodized aluminium water filler cap
- Hot/cold pressurized fresh water with accumulator tank
- 6 gal hot water heater (110V or engine)
- Galley features rectangular double sink with mixer tap
- Heads feature fiberglass wash basin with combination faucet and hand shower with shower hose and support

- Fibreglass shower base with drain and electric shower drain pump

## Electrical

- Rig lightning grounded
- Conduit for options - transom to chart table, mast to chart table, mast step to cockpit area (transducers), anchor locker to forward bunk (electric windlass)
- 12 volt control panel - 14 functions
- 12 volt socket at the chart table
- 12 volt control panel - 14 functions
- 110 volt control panel under chart table
- 110 volt outlets - (1) in each cabin, head, galley, salon and at chart table
- 110 volt shore power outlet on transom
- Halogen overhead lighting in cabins, salon, galley
- Fluorescent tube lighting in galley & head
- Reading lights in each cabin
- Nav station light
- Independent switches for lights
- Light on cockpit table
- Courtesy light in companionway
- Bi-color nav light

## OCEANIS 381

- Stern light
- Combination deck and steaming light

- Anchor light

## Mechanic and Engine

- Fuel capacity 39 gal aluminium tank
- Fuel filter and water separator
- 12 volt 50 amp alternator
- 20 amp battery charger
- Engine battery - 1 x 12 volt 100 amp
- House battery - 1 x 12 volt 200 amp

## ENGINE EQUIPMENT

- 42 hp Westerbeke diesel engine
- Engine stringers integrated in hull grid
- Engine control panel integrated in port cockpit coaming
- Single lever engine control integrated in cockpit table
- Engine kill switch
- 3 bladed fixed prop (15 x 13 RH)
- Engine compartment soundproofed with foam
- S/S prop shaft with composite epoxy/glass stern tube

## Ports and hatches

- Forward cabin:

- 
- (1) Lewmar 30 hatch (15 7/16 x 20 1/2") with blind
  - (2) Lewmar size 0 opening portlight (7 x 12 7/8") with screen and curtain (one to port and one to starboard)
  - (1) fixed coachroof light facing forward
  
  - Salon:
    - (2) Lewmar 30 hatches (15 7/16 x 20 1/2") with blind
    - (2) Lewmar size 4 opening portlights (7 5/8 x 25 5/8") with screens & curtains
    - (1) Lewmar size 1 opening portlight (7 5/8 x 14 1/2") with screen & curtain
    - (2) fixed hull portlights
    - (1) Dorade vent
  
  - Galley:
    - (1) Lewmar size 1 opening portlight (7 5/8 x 14 1/2") with screen & curtain
    - (1) Lewmar size 5 opening hatch (9 11/16 x 13") with blinds
  
  - Companionway:
    - PMMA/plexiglass sliding hatch and removable aerated, wooden hatch boards.
  
  - Aft Cabin:
    - (1) Lewmar size 1 opening portlight (7 5/8 x 14 1/2") with screen & blind
    - (1) Lewmar size 4 opening portlights (7 5/8 x 25 5/8") with screen



- (1) fixed hull portlight
- Aft Head:
- (1) Lewmar size 1 opening portlight (7 5/8 x 14 1/2") with screen & blind

## OCEANIS 381

- (1) Lewmar size 5 opening hatch (9 11/16 x 13") with blinds
- (1) Fixed hull portlight

## Equipment

Plow primary - all chain Bruce secondary - chain and road Garmin 5208 Chartplotter ST 60+  
WindRaymarine autopilot Autohelm tridata Lofrans Cayman 88 windlass Mast mounted spinnaker  
pole Insulated hatch covers Oversize captains chair com M424G VHF with GPS Seapower  
Technology inverter (will run AC) ENO 420 stove and oven Hamilton Beach microwave All new  
batteries September 2020 Dripless shaft seal Cockpit cushions Dodger with window covers Jabsc  
Marine toilet Two AC units with SMX II controls Interior and cockpit speakers Boss MR508 UABW  
stereo Hatch and port screens ICOM RAM set for cockpit

## Exclusions

---

Owner's personal belongings.

## Disclaimer

---

The Company offers the details of this vessel or yacht in good faith but cannot guarantee or warrant the accuracy of this information nor warrant the condition of the vessel. A buyer should instruct his representatives, agents, or his surveyors, to investigate such details as the buyer desires validated. This vessel or yacht is offered subject to prior sale, price change, or withdrawal without notice.

# PHOTOS

2



3



4



5



6



7



8



9



10



11



13



12





14



15



16



17



18



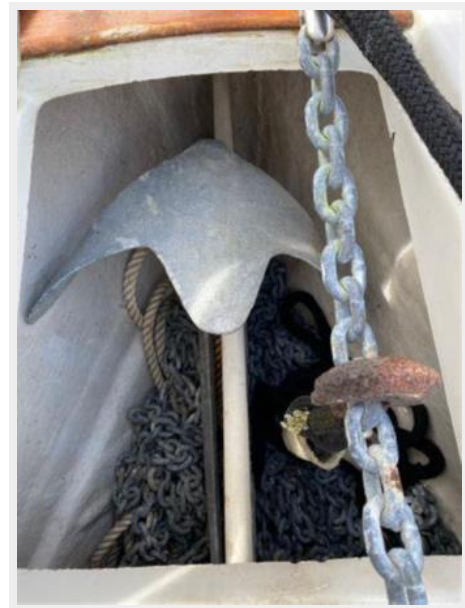
19



20



21



22



23



24



25





26



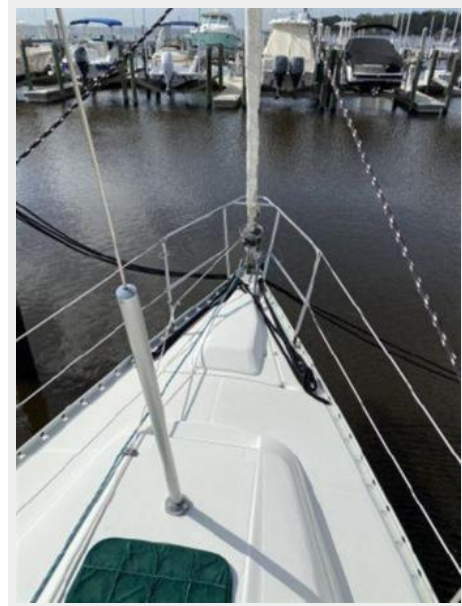
27



28



29





30



31



32



33



34



35



36



37



38



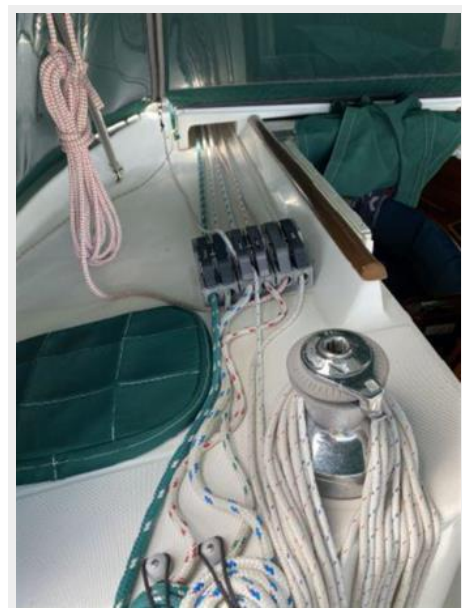
39



40



41





42



43



44



45



46



47



48



49



50



51



53



52





54



55



56



57



58



59



60



61



63



62



64



65



66



67





68



69



70



71



72



73



74



75



76



77



78



79



80



81





82



83



84



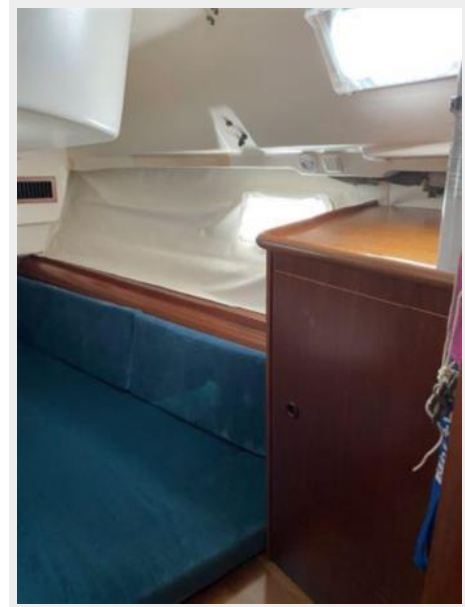
85



86



87



88



89



90



91



92



93





94



95



96



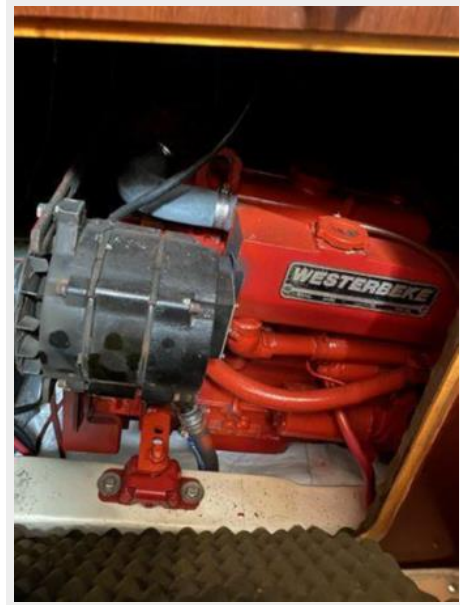
97



98



99



100

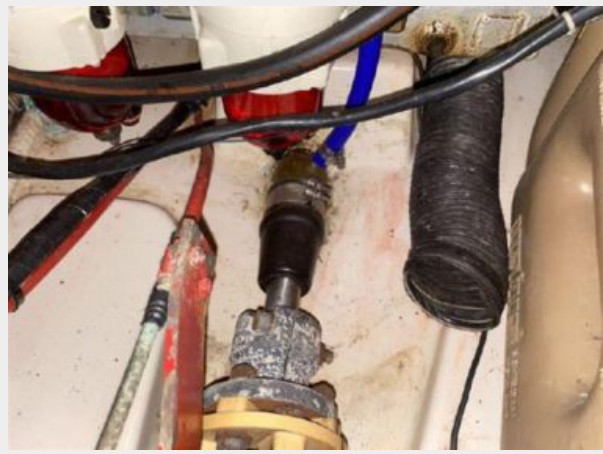


101





102



103



104



105



106



107



108



109



110



111



112



113





114



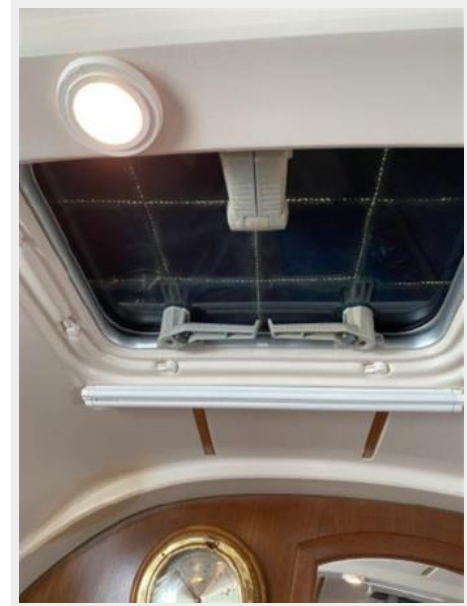
115



116



117



118



119



120



# CONTACTS

---

Andrey Shestakov, leading yacht broker of the sales department of Shestakov Yacht Sales Inc. Shestakov Yacht Sales Inc., the official representative of the Miami/Fort Lauderdale FL headquarters.

## Contact details

---

Email: [andrey@shestakovyachtsales.com](mailto:andrey@shestakovyachtsales.com)

Web: [shestakovyachtsales.com/en/](http://shestakovyachtsales.com/en/)

## Telephones

---

USA: +1(954)274-4435

## Office hours

---

Monday – Saturday: **9:00 - 21:00** EDT

Sunday: **closed**

## Address

---



Harbour Towne Marina, 850 NE 3rd St,  
STE 213, Dania, FL 33004