

RENATA — HUNTER



Builder: HUNTER

Year Built: 1993

Model: Cruising Sailboat

Price: PRICE ON APPLICATION

Location: United States

LOA: 37' 0" (11.28m)

Beam: 12' 10" (3.91m)

Max Draft: 4' 11" (1.50m)

Our experienced yacht broker, Andrey Shestakov, will help you choose and buy a yacht that best suits your needs **Renata — HUNTER** from our catalogue. Presently, at Shestakov Yacht Sales Inc., we have a wide variety of yachts available on our sale's list. We also work in close contact with all the big yacht manufacturers from all over the world.

If you would like to buy a yacht **Renata — HUNTER** or would like help answering any questions concerning purchasing, selling or chartering a yacht, please call **+1(954)274-4435**

TABLE OF CONTENTS

| | |
|------------------------------|----|
| TABLE OF CONTENTS | 2 |
| SPECIFICATIONS | 6 |
| Overview | 6 |
| Basic Information | 6 |
| Dimensions | 6 |
| Speed, Capacities and Weight | 6 |
| Accommodations | 7 |
| Hull and Deck Information | 7 |
| Engine Information | 7 |
| DETAILED INFORMATION | 8 |
| Overview | 8 |
| Exclusions | 12 |
| Disclaimer | 12 |
| PHOTOS | 13 |
| 2 | 13 |
| 3 | 13 |
| 5 | 13 |
| 4 | 13 |
| 6 | 14 |
| 7 | 14 |
| 9 | 14 |
| 8 | 14 |
| 11 | 15 |
| 10 | 15 |
| 12 | 15 |
| 13 | 15 |
| 14 | 16 |
| 15 | 16 |

| | |
|----|----|
| 16 | 16 |
| 17 | 16 |
| 18 | 17 |
| 19 | 17 |
| 20 | 17 |
| 21 | 17 |
| 22 | 18 |
| 23 | 18 |
| 24 | 18 |
| 25 | 18 |
| 26 | 19 |
| 27 | 19 |
| 29 | 19 |
| 28 | 19 |
| 30 | 20 |
| 31 | 20 |
| 32 | 20 |
| 33 | 20 |
| 34 | 21 |
| 35 | 21 |
| 36 | 21 |
| 37 | 21 |
| 38 | 22 |
| 39 | 22 |
| 40 | 22 |
| 41 | 22 |
| 42 | 23 |
| 43 | 23 |
| 45 | 23 |

| | |
|----|----|
| 44 | 23 |
| 46 | 24 |
| 47 | 24 |
| 48 | 24 |
| 49 | 24 |
| 51 | 25 |
| 50 | 25 |
| 53 | 25 |
| 52 | 25 |
| 54 | 26 |
| 55 | 26 |
| 56 | 26 |
| 57 | 26 |
| 58 | 27 |
| 59 | 27 |
| 60 | 27 |
| 61 | 27 |
| 63 | 28 |
| 62 | 28 |
| 65 | 28 |
| 64 | 28 |
| 66 | 29 |
| 67 | 29 |
| 68 | 29 |
| 69 | 29 |
| 70 | 30 |
| 71 | 30 |
| 73 | 30 |
| 72 | 30 |

| | |
|-----------------|-----------|
| 74 | 31 |
| 75 | 31 |
| 76 | 31 |
| 77 | 31 |
| 78 | 32 |
| 79 | 32 |
| 80 | 32 |
| 81 | 32 |
| 82 | 33 |
| 83 | 33 |
| 85 | 33 |
| 84 | 33 |
| 87 | 34 |
| 86 | 34 |
| 88 | 34 |
| 89 | 34 |
| 90 | 35 |
| 91 | 35 |
| 92 | 35 |
| 93 | 35 |
| 95 | 36 |
| 94 | 36 |
| CONTACTS | 37 |
| Contact details | 37 |
| Telephones | 37 |
| Office hours | 37 |
| Address | 37 |

SPECIFICATIONS

Overview

The Hunter 37.5 exterior has a sleek uncluttered foredeck, reverse transom and nearly 60' tall mast combine to give this sloop a sleek profile. The cockpit with pedestal steering and large destroyer wheel is roomy enough for 6 people. The 37.5 has the appearance of a high-performance boat with a nod to the Nautor-Swan with its lowered coachroof that blends seamlessly into the foredeck. Construction It features a solid fiberglass hull, balsa-cored deck, Bergstrom & Ridder fractional rig with swept spreaders, balanced spade rudder and two keel options: a deep fin or a shoal-draft bulb with wings. Longitudinal stringers installed in the hull midsection to each side of the keel provide additional structural support. And although there isn't much teak or mahogany on deck, the interior is graced with a mix of exotic woods.

Basic Information

Category: Cruising Sailboat

Model Year: 1993

Year Built: 1993

Country: United States

Dimensions

LOA: 37' 0" (11.28m)

LWL: 31' 9" (9.68m)

Beam: 12' 10" (3.91m)

Max Draft: 4' 11" (1.50m)

Clearance: 59' 0" (17.98m)

MFG Length: 37' 0" (11.28m)

Speed, Capacities and Weight

Displacement: 16400 Pounds

Water Capacity: 75 Gallons

Fuel Capacity: 35 Gallons

Accommodations

Total Heads: 1

Hull and Deck Information

Hull Material: Fiberglass

Engine Information

Engines: 1

Manufacturer: Yanmar

Model: 3JH2E

Engine Type: Inboard

Fuel Type: Diesel

DETAILED INFORMATION

Overview

On Deck

Sailboats with style often sacrifice functionality, but here again, the Hunter Legend 37 succeeds with a sculpted cockpit that provides room for six, albeit the space behind the helm is tight. Many owners have removed the arched bench behind the wheel.

With a 59-foot, fractional rig and swept spreaders, it's easy to see this boat could be a speedster in capable hands. The rig can carry a big main, its power kept under control in 25 knots of wind using only the backstay, cunningham and boom vang. The wide sidedecks are welcomed by sailors sent to work the foredeck.

Below Deck

Roomy and comfortable are the key words belowdecks. The U-shaped galley to port features a two-basin stainless steel sink, top-loading refrigerator, a two- or three-burner stove with oven, adequate storage, counter space and lots of small drawers. The saloon has a drop-leaf table and a circular seating pattern that encourages socializing, with settees to each side that can be used as single berths. Headroom is 6 feet 3 inches in the saloon and the boat carries 75 gallons of freshwater.

A navigator's station to starboard has a hinged desk drawer and various storage compartments. The aft berth, located beneath the cockpit, has an athwartships queen bed that can be reached from either side through the cabin door or the head.

The forward V-berth cabin sleeps two, has two large hanging lockers.

The teak-and-holly sole gives the interior a warm glow while flush-mounted deck skylights allow

natural light to enter the cabin.

Underway and Conclusion

Fast is the most frequently heard word from the mouths of owners when describing the boat's sailing characteristics. It seems generally agreed that the boat performs remarkably in light air, perhaps due to the high sail area-to-displacement ratio.

The Hunter Legend 37.5 is both racer and cruiser in the truest sense of that sailing hybrid, capable of winning in club competition or providing luxury and comfort on a weeklong cruise. Its racer profile will turn heads while its belowdecks accommodations are likely to encourage friends less interested in competition to stay aboard a bit longer. This boat is equally at home in both worlds.

Walk Through

Renata has a large open cockpit with shallow lockers for storage. The transom is a walk through with easy water access from the ladder and a shower for fresh water rinsing.

The side decks are wide with inboard shrouds for ease of moving for and aft. She has canvas covered jerry cans lining the port bow rail. The oversize windlass will make easy work of the anchor. Walking aft the cockpit is protected by a new dodger and bimini out of sky blue sunbrella.

Stepping below to port is the for and aft galley with walk through to master stateroom. You can close off all doors and pass throughs for complete privacy or open things up for better views. There are large hanging lockers on port and starboard as well as open shelving.

Opposite the galley is the large head and shower with walk through to aft stateroom. The shower and head are separated with a sink in between for convenience. In front of the head is the navigation station with electronics and ships 12 and 110 volts panels.

Working forward is the main salon with seating to starboard and dining table for 4 with leaf down or 7 with leaf up. The table also drops down to for a third berth.

All the way forward is second stateroom with large vberth. Plenty of natural and 12 volt lighting and fan to circulate air. This stateroom can be opened up similar to the aft stateroom or closed off for complete privacy.

Equipment

ON DECK:

2018 new 130% roller furling headsail

Canvas is 18 months old includes dodger bimini, connector and covers

Marine Airex wind generator recently serviced

Autopilot - Linear Drive

2010 Garmin 541 chartplotter

Honda 2.3 4 stroke

Trinidad bottom paint 2017

Bottom cleaned recently

2 X 35 AMP power cords

Transmission and gear cables changed 2017

3 aluminum CNG bottles

Party size Magma grill with 2 X 6lb aluminum bottles

Solar panel on deck

New oversize 5/8" chain and new rode 2017

Custom dual roller and bow plate with a bruce and delta anchor

New Windex

Simpson Lawrance Anchorman Power 700 windlass

LED light on masthead

Dutchman system on mainsail

Rigid dinghy

New main and Jib halyard 2017

New traveler lines 2017

New Jib sheets 2018

Fenders and lines

BELOW:

AC Marine Air 16000 BTU with new controls 2010

Pur power survivor water maker

LED bulbs in half of interior lights

Kenwood stereo with speakers 2010 with remote control

Standard Horizon GX2100 VHF 2018 with cockpit RAM handset in cockpit

Inverter

Water heater new 2016 and plumbed to heat exchanger

Large Fridge and Freezer (COLD!)

New start battery 2018

New bilge pump and float 2018

New AC breaker 2018

Dripless shaft seal

New salt water foot pump

Fans in all cabins and 2 in main salon

New Mattress in aft stateroom

Exclusions

Owner's personal belongings.

Disclaimer

The Company offers the details of this vessel or yacht in good faith but cannot guarantee or warrant the accuracy of this information nor warrant the condition of the vessel. A buyer should instruct his representatives, agents, or his surveyors, to investigate such details as the buyer desires validated. This vessel or yacht is offered subject to prior sale, price change, or withdrawal without notice.

PHOTOS

2



3



5

4



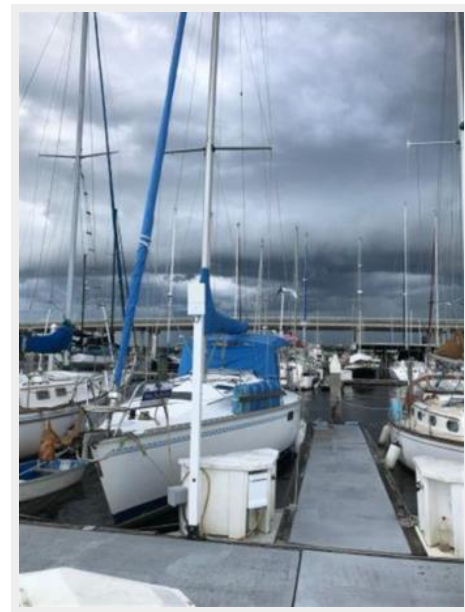
6



7



9



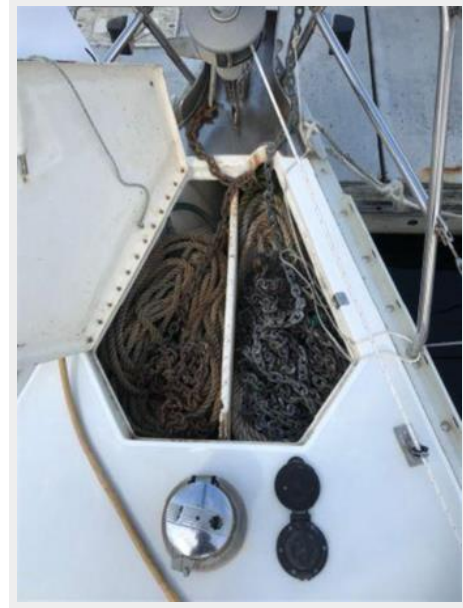
8



10



11



12



13



14



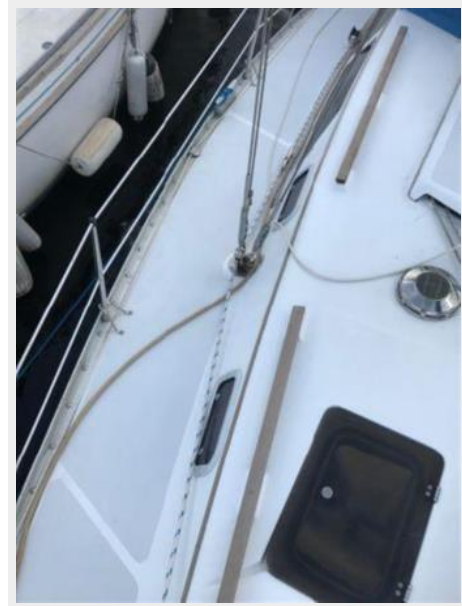
15



16



17



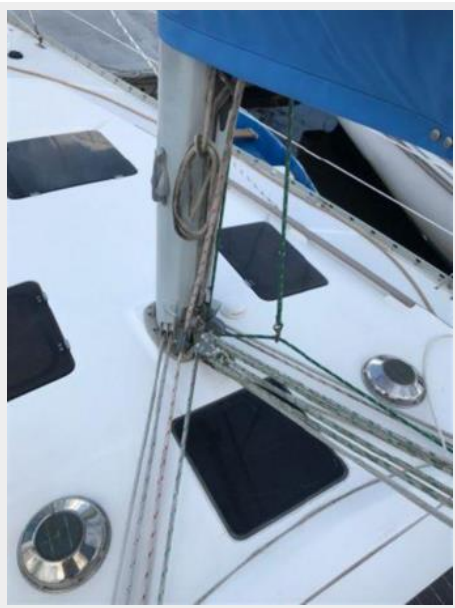
18



19



20



21



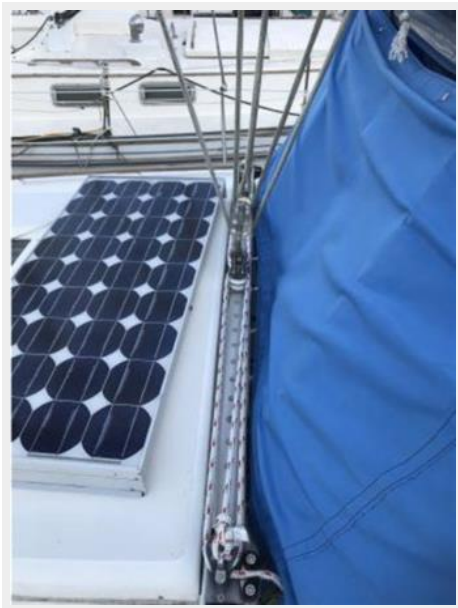
22



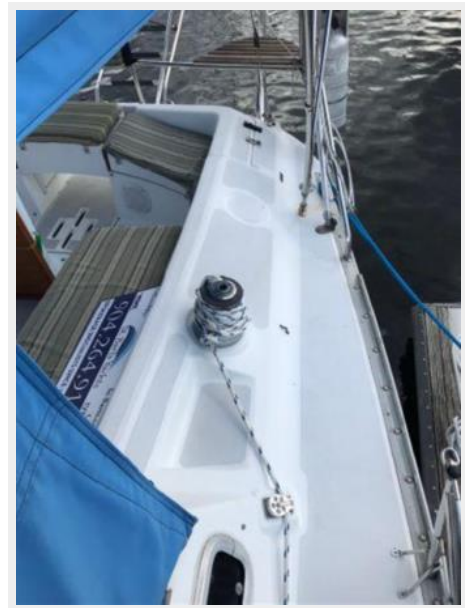
23



24



25



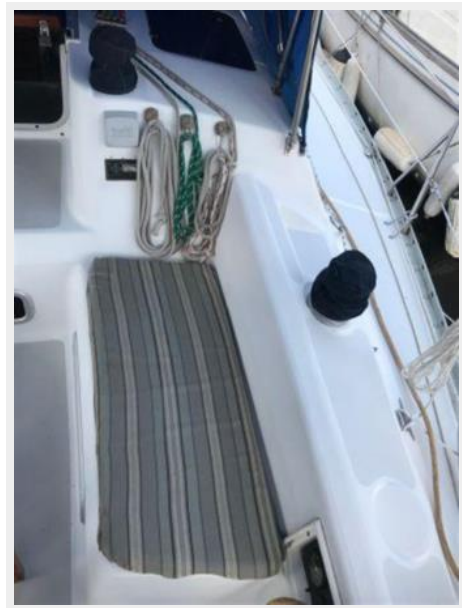
26



27



29



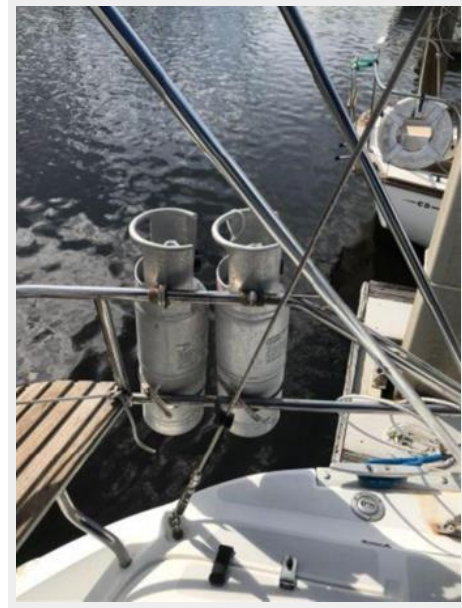
28



30



31



32



33



34



35



36



37



38



39



40



41



42



43



45



44



46



47



48



49



50



51



52



53



54



55



56



57



58



59



60



61



62



63



65



64



66



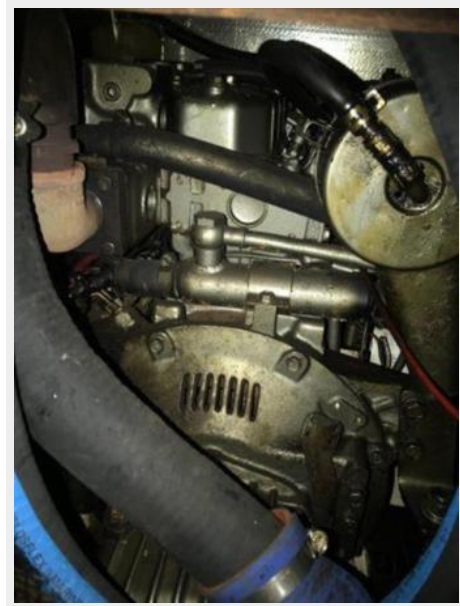
67



68



69



70



71



73



72



74



75



76



77



78



79



80



81



82



83



84



85



86



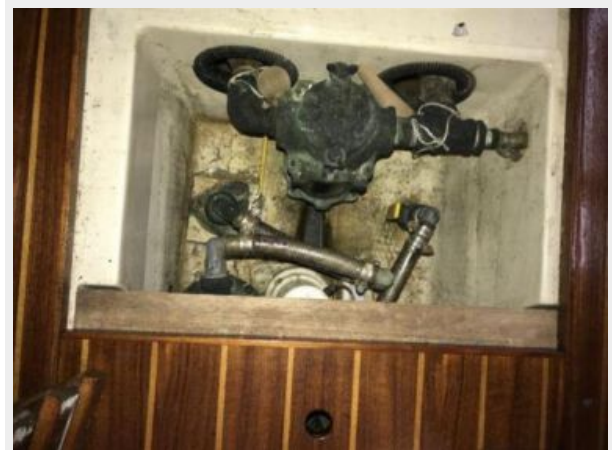
87



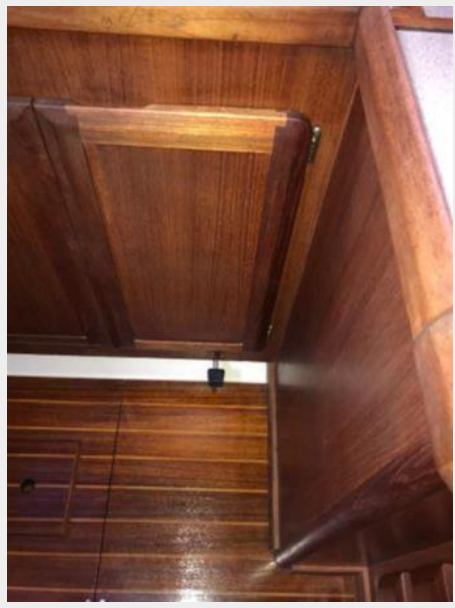
88



89



90



91



92



93



94



95



CONTACTS

Andrey Shestakov, leading yacht broker of the sales department of Shestakov Yacht Sales Inc. Shestakov Yacht Sales Inc., the official representative of the Miami/Fort Lauderdale FL headquarters.

Contact details

Email: andrey@shestakovyachtsales.com

Web: shestakovyachtsales.com/en/

Telephones

USA: +1(954)274-4435

Office hours

Monday – Saturday: **9:00 - 21:00** EDT

Sunday: **closed**

Address



Harbour Towne Marina, 850 NE 3rd St,
STE 213, Dania, FL 33004