

LAST TANGO — ROBINHOOD



Builder: ROBINHOOD

Year Built: 1998

Model: Cruising Sailboat

Price: PRICE ON APPLICATION

Location: United States

LOA: 36' 0" (10.97m)

Beam: 10' 7" (3.23m)

Max Draft: 5' 0" (1.52m)

Our experienced yacht broker, Andrey Shestakov, will help you choose and buy a yacht that best suits your needs **Last Tango — ROBINHOOD** from our catalogue. Presently, at Shestakov Yacht Sales Inc., we have a wide variety of yachts available on our sale's list. We also work in close contact with all the big yacht manufacturers from all over the world.

If you would like to buy a yacht **Last Tango — ROBINHOOD** or would like help answering any questions concerning purchasing, selling or chartering a yacht, please call **+1(954)274-4435**

TABLE OF CONTENTS

| | |
|------------------------------|----|
| TABLE OF CONTENTS | 2 |
| SPECIFICATIONS | 5 |
| Overview | 5 |
| Basic Information | 5 |
| Dimensions | 5 |
| Speed, Capacities and Weight | 5 |
| Hull and Deck Information | 5 |
| Engine Information | 6 |
| DETAILED INFORMATION | 7 |
| Overview | 7 |
| Exclusions | 7 |
| Disclaimer | 7 |
| PHOTOS | 9 |
| 2 | 9 |
| 3 | 9 |
| 4 | 9 |
| 5 | 9 |
| 6 | 10 |
| 7 | 10 |
| 8 | 10 |
| 9 | 10 |
| 10 | 11 |
| 11 | 11 |
| 12 | 11 |
| 13 | 11 |
| 14 | 12 |
| 15 | 12 |
| 17 | 12 |

| | |
|----|----|
| 16 | 12 |
| 18 | 13 |
| 19 | 13 |
| 20 | 13 |
| 21 | 13 |
| 22 | 14 |
| 23 | 14 |
| 24 | 14 |
| 25 | 14 |
| 26 | 15 |
| 27 | 15 |
| 29 | 15 |
| 28 | 15 |
| 31 | 16 |
| 30 | 16 |
| 33 | 16 |
| 32 | 16 |
| 35 | 17 |
| 34 | 17 |
| 36 | 17 |
| 37 | 17 |
| 39 | 18 |
| 38 | 18 |
| 40 | 18 |
| 41 | 18 |
| 42 | 19 |
| 43 | 19 |
| 44 | 19 |
| 45 | 19 |

| | |
|-----------------|----|
| 46 | 20 |
| 47 | 20 |
| 48 | 20 |
| 49 | 20 |
| 50 | 21 |
| 51 | 21 |
| 52 | 21 |
| 53 | 21 |
| 54 | 21 |
| 55 | 21 |
| 57 | 22 |
| 56 | 22 |
| 58 | 22 |
| 59 | 22 |
| CONTACTS | 23 |
| Contact details | 23 |
| Telephones | 23 |
| Office hours | 23 |
| Address | 23 |

SPECIFICATIONS

Overview

When Cape Dory ceased operations in 1991 the hull molds were scattered and the 36 mold settled at Spartan Marine in Robinhood Maine where the 36 is still being built on a semi custom basis. The materials and processes used now are even better than in years past producing a very desired yachtsmans yacht. The Robinhood 36 looks at ease in the water. The 36 has a subtle sheerline, and the low freeboard accentuates a low-slung profile. Alberg was a master of creating boats of moderate proportions that gave the impression of being heavier and more conservative than they really were. The full keel is cutaway forward with an attached rudder and the prop is enclosed in an aperture. Most CD 36s were rigged as cutters with a club boom, a few came from the factory as sloops.

Basic Information

Category: Cruising Sailboat

Model Year: 1998

Year Built: 1998

Country: United States

Dimensions

LOA: 36' 0" (10.97m)

LWL: 27' 10" (8.48m)

Beam: 10' 7" (3.23m)

Max Draft: 5' 0" (1.52m)

Speed, Capacities and Weight

Water Capacity: 96 Gallons

Fuel Capacity: 43 Gallons

Hull and Deck Information

Hull Material: Fiberglass

Engine Information

Engines: 1

Manufacturer: Yanmar

Model: 3JH-3E

Engine Type: Inboard

Fuel Type: Diesel

DETAILED INFORMATION

Overview

ExteriorThe Robinhood 36 has a very protected cockpit with teak trim and bronze fittings throughout. This boat has a hard dodger to protect the cockpit even further. The nonskid around the decks is a nice tan color that goes well with the white gelcoat and tan canvas work. From her teak and bronze dorades and boxes to the mast safety leaning posts safety and comfort show up in every detail. She has a deck mounted 4 man liferaft. She is set up up for shorthanded and ease of sailing with self tailing winches, clubfooted and self tacking staysail, roller furling on both headsails. The mainsail has a full set of lazy jacks for ease of handling on the mainsail.

InteriorThe galley is to port at the base of the companionway stairs with gimballed Broadwater Marine Stove. The sink is a deep double basin stainless steel unit with chrome faucet and filtered drinking water. A large fridge/freezer is on the aft bulkhead of the galley with plenty of cold storage. Dry storage is behind the stove and fridge with drawers behind the steps where the electrical panel is located. To Starboard is the quarter berth that backs up to the chart table. The berth is deep with overhead storage outboard. Moving forward the chart table has charger controls, stereo and VHF with AIS. Forward is the main salon with apposing settees with 3 tone upholstery and folding teak table in between with seating for 6-8. There is shelving behind both settees with lockers and storage with doors at either ends. Forward from main salon is the head to port with a manual marine head and separate shower. The shower is well laid out with lots of light and hooks for hanging clothes. The vanity has storage behind for bathroom essentials. The v-berth has a single bed to starboard and a work/storage area to port. There are shelves outboard and plenty of room for tools and spares in the cabinets, drawers and under berth areas.

Recent maintenance May 2020 New shaft New cutlass bearing 3 blade prop reconditioned Fuel polished Fuel tank cleaned New Exhaust elbow and manifold New raw water pump New fresh water pump New belts New miscellaneous hoses Paint touched up January 2020 New watermaker membrane Fresh water pump 2 new Lifeline house batteries Wired handheld spotlight February 2020 New 3.5 Mercury outboard August 2019 New VHF and RAM for cockpit September 2019 New dinghy Liferaft serviced November 2019 Awlgrip on hardtop and dodger New Seafrost engine driven refrigeration 2017 New B&G chartplotter, tridata and radar Ground tackle All chain on primary 150' All chain and rode on secondary CQR primary Bruce secondary Fortress third

Exclusions

Owner's personal belongings.

Disclaimer

The Company offers the details of this vessel or yacht in good faith but cannot guarantee or warrant the accuracy of this information nor warrant the condition of the vessel. A buyer should instruct his representatives, agents, or his surveyors, to investigate such details as the buyer desires validated. This vessel or yacht is offered subject to prior sale, price change, or withdrawal without notice.

PHOTOS

2



3



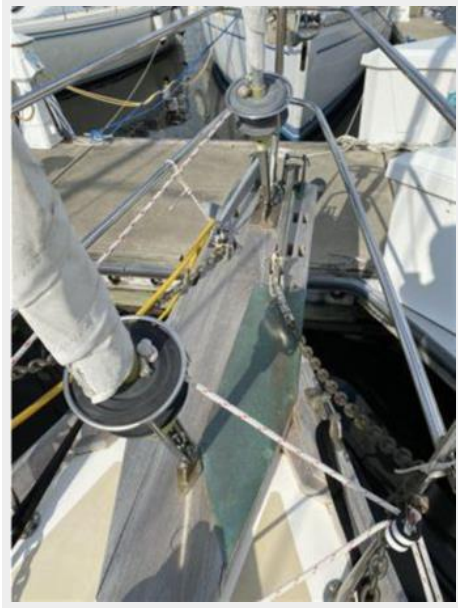
4



5



6



7



8



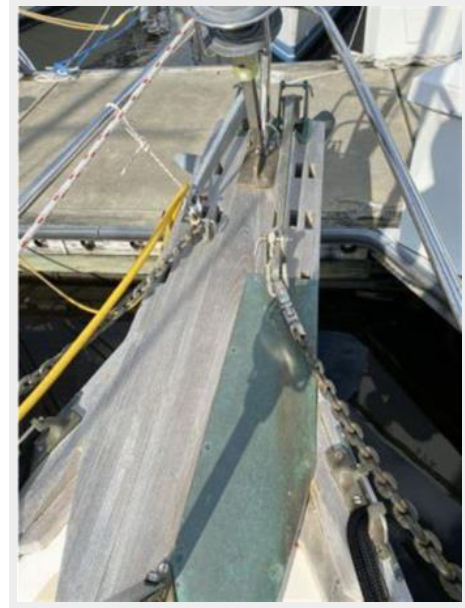
9



10



11



12



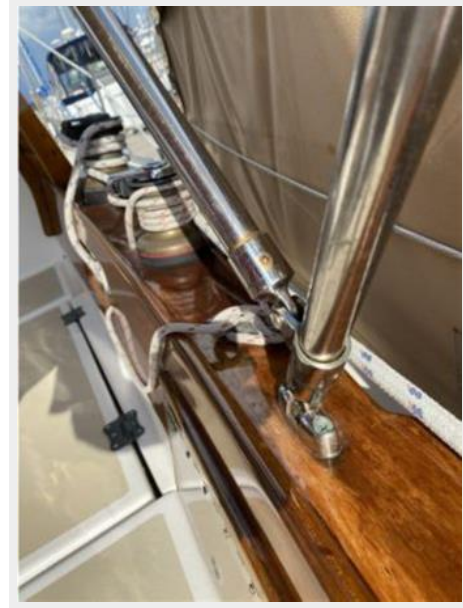
13



14



15



16



17



18



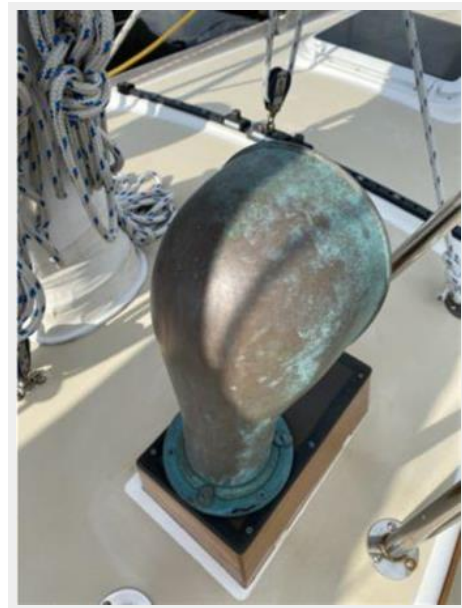
19



20



21



22



23



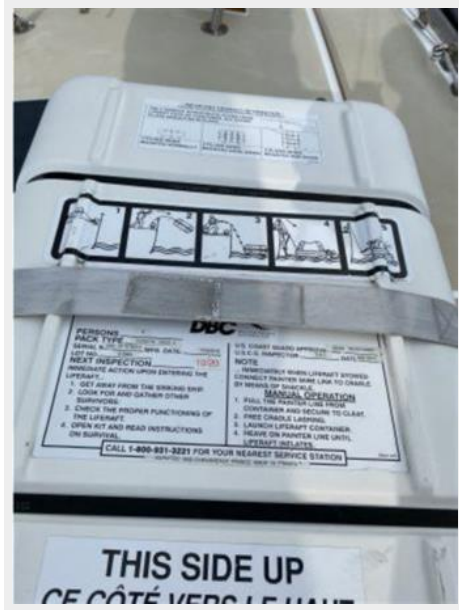
24



25



26



27



29



28



30



31



32



33



34



35



36



37



38



39



40



41



42



43



44



45



46



47



48



49



50



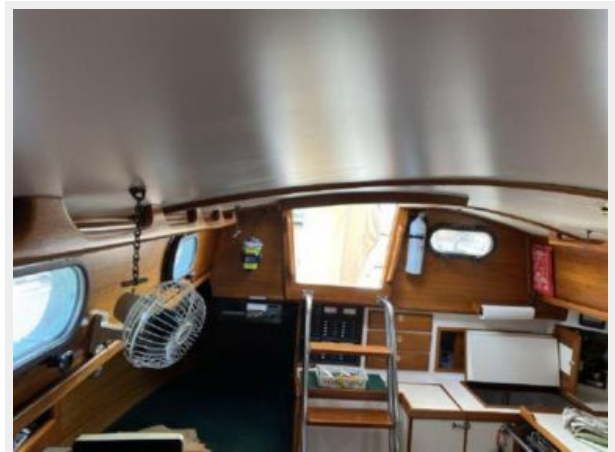
51



52



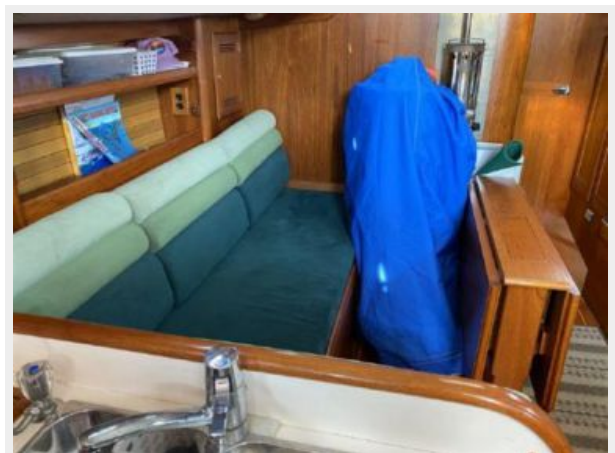
53



54



55



56



57



58



59



CONTACTS

Andrey Shestakov, leading yacht broker of the sales department of Shestakov Yacht Sales Inc. Shestakov Yacht Sales Inc., the official representative of the Miami/Fort Lauderdale FL headquarters.

Contact details

Email: andrey@shestakovyachtsales.com

Web: shestakovyachtsales.com/en/

Telephones

USA: +1(954)274-4435

Office hours

Monday – Saturday: **9:00 - 21:00** EDT

Sunday: **closed**

Address



Harbour Towne Marina, 850 NE 3rd St,
STE 213, Dania, FL 33004