

SELAH — HUNTER



Builder: HUNTER

Year Built: 2002

Model: Cruising/Racing Sailboat

Price: PRICE ON APPLICATION

Location: United States

LOA: 34' 0" (10.36m)

Beam: 11' 8" (3.56m)

Max Draft: 4' 6" (1.37m)

Our experienced yacht broker, Andrey Shestakov, will help you choose and buy a yacht that best suits your needs **Selah — HUNTER** from our catalogue. Presently, at Shestakov Yacht Sales Inc., we have a wide variety of yachts available on our sale's list. We also work in close contact with all the big yacht manufacturers from all over the world.

If you would like to buy a yacht **Selah — HUNTER** or would like help answering any questions concerning purchasing, selling or chartering a yacht, please call **+1(954)274-4435**

TABLE OF CONTENTS

TABLE OF CONTENTS	2
SPECIFICATIONS	5
Overview	5
Basic Information	5
Dimensions	6
Speed, Capacities and Weight	6
Accommodations	6
Hull and Deck Information	6
Engine Information	6
DETAILED INFORMATION	7
Overview	7
Exclusions	7
Disclaimer	7
PHOTOS	9
2	9
3	9
4	9
5	9
6	10
7	10
9	10
8	10
10	11
11	11
12	11
13	11
14	12
15	12

16	12
17	12
18	13
19	13
21	13
20	13
22	14
23	14
25	14
24	14
26	15
27	15
28	15
29	15
30	16
31	16
32	16
33	16
34	17
35	17
36	17
37	17
38	18
39	18
40	18
41	18
43	19
42	19
44	19

45	19
46	20
47	20
49	20
48	20
51	21
50	21
52	21
53	21
54	22
55	22
56	22
57	22
59	23
58	23
61	23
60	23
62	24
63	24
64	24
65	24
66	25
67	25
68	25
CONTACTS	26
Contact details	26
Telephones	26
Office hours	26
Address	26

SPECIFICATIONS

Overview

Whether you are ready to set sail for the islands or just around the buoys, the Hunter 340 can really make a difference. Starting with the tall, fractional rig – which is a direct descendent of the B&R rig that powered Hunter's Child to a second place finish in the recent BOC – Hunter has engineered the mast to carry less weight aloft with smaller sections. This is accomplished by utilizing swept-back spreaders and reverse diagonals as well as mast support struts. This combination provides superior strength without a backstay and increases stability at the same time. By using a large roach main as the power sail, Hunter has eased the effort in sail handling and allowed for real versatility for all wind and sea conditions. Your benefit: better performance with less effort.

The deck layout reflects the innovation that accompanies the rig. An integrated arch protects the cockpit from snapping main sheets and blistering sun with the optional bimini. This arch keeps the cockpit clear and open. A custom console stands ready with the standard VHF and instruments. Single lever control and fold down table along with engine instrumentation complete the command station. The swim platform and walkthrough transom complete with shower and folding ladder are perfect for water sports or for boarding the tender. Storage is everywhere you look and the non-skid is first rate. Comfort is truly important aboard whether for a week or a year, so Hunter has created an interior that not only looks good, but works for you as well. Two private, large staterooms along with an enormous head with shower and a salon that can seat eight plus a gourmet galley will keep all the crew happy.

If you're looking for major comfort in a mid-size package and performance is important, then the Hunter 340 is your answer.

Basic Information

Category: Cruising/Racing Sailboat

Model Year: 2002

Year Built: 2002

Country: United States

Dimensions

LOA: 34' 0" (10.36m)

LWL: 28' 7" (8.71m)

Beam: 11' 8" (3.56m)

Max Draft: 4' 6" (1.37m)

Clearance: 55' 9" (16.99m)

Speed, Capacities and Weight

Displacement: 11030 Pounds

Water Capacity: 75 Gallons

Holding Tank: 30 Gallons

Fuel Capacity: 30 Gallons

Accommodations

Total Cabins: 2

Total Berths: 3

Total Heads: 1

Hull and Deck Information

Hull Material: Fiberglass

Engine Information

Engines: 1

Manufacturer: Yanmar

Engine Type: Inboard

Fuel Type: Diesel

DETAILED INFORMATION

Overview

DECK AND HULL Stainless arch w/mainsheet Stainless bow pulpit Stainless stern rail with seats Double lifelines w/gates Stainless handrails Windshield Two-tone non-skid deck Anchor well w/space for windlass Stainless stem fitting w/anchor roller (5) Cockpit/transom storage lockers Integrated swim platform Stainless telescoping swim ladder (2) Dorade vents (4) Opening hatches w/screens (4) Opening ports w/screens (4) Fixed hull ports Through-bolted hull/deck joint One piece continuous rub rail (4) Dock cleats (2) Spring cleats Shoal or deep keel COCKPIT Integrated wheel console includes: folding cockpit table, S/S guard, drinkholders, lighted compass, storage, wheel brake and single lever engine control Walk-through transom Hinging helmsman seat Wrap-around coamings Halyard stowage wells Hot/cold cockpit shower Manual bilge pump Stainless steel cockpit arch AUXILIARY POWER 27 hp Yanmar diesel, freshwater cooled 30 gal. (110 l) fuel tank ELECTRICAL Dockside power w/cord Multiple AC outlets in cabin AC/DC switch panel Dual 12v battery switch Battery charger Electric automatic bilge pump Tank monitors Running lights w/steaming and anchor light Cabin lighting CABINS Selected hardwood trim Hardwood cabin sole Fully enclosed head w/shower Molded vanity w/Corian® top 30 gal. (110 l) holding tank Hot/cold pressure water (3) Hanging lockers Private aft cabin Private forward cabin Dinette converts to double berth RIGGING Large roach mainsail w/flaking system 110% furling genoa Furling system Mainsail cover Boom vang Single line reefing system Internal halyards led to cockpit (2) Sets triple line stoppers and organizers (2) Two speed self-tailing winches Anodized fractional rig w/support struts Inboard jib track w/cars Mainsheet on arch Windex® wind vane OPTIONS Arch-mounted bimini system In-mast furling Raytheon® Autohelm® GPS Raytheon® Autohelm® Windmachine Raytheon® Autohelm® 4000 autopilot Accord window shades Cockpit cushions Mainsheet traveler Electric anchor windlass Refrigeration ADDITIONAL EQUIPMENT 3 X 100 Watt solar panels 3 X Group 29 Batteries Garmin Chartplotter Bilge Pump New 2020 Force 10 Grill New Starter and Water pump for Yanmar onboard Many spares Bottom completed in 2020 Air Conditioning

Exclusions

Owner's personal belongings.

Disclaimer

The Company offers the details of this vessel or yacht in good faith but cannot guarantee or warrant the accuracy of this information nor warrant the condition of the vessel. A buyer should instruct his representatives, agents, or his surveyors, to investigate such details as the buyer

desires validated. This vessel or yacht is offered subject to prior sale, price change, or withdrawal without notice.

PHOTOS

2



3



4



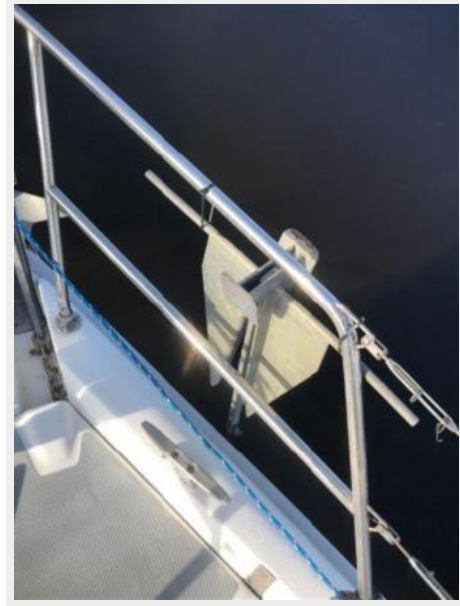
5



6



7



9



8



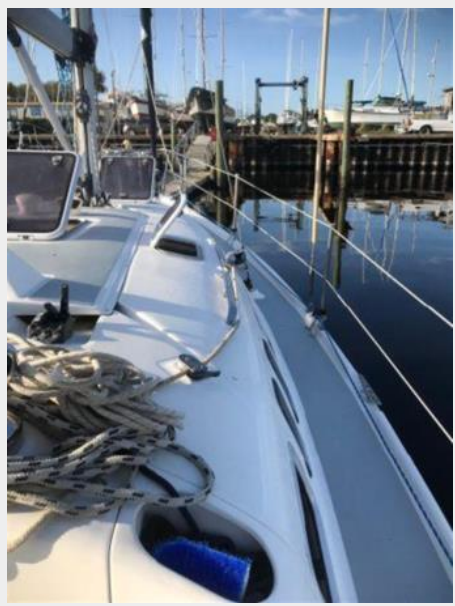
10



11



12



13



14



15



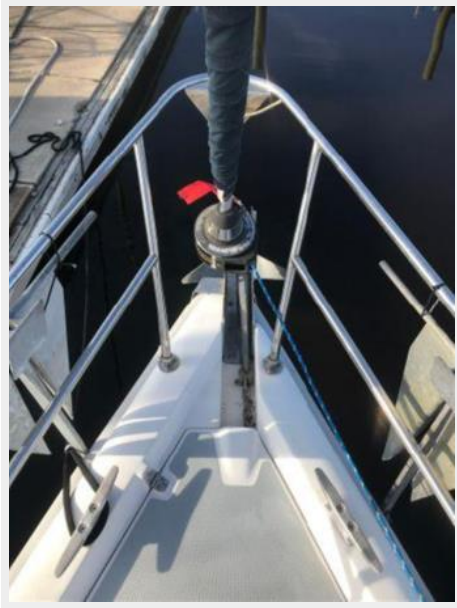
16



17



18



19



21



20



22



23



24



25



26



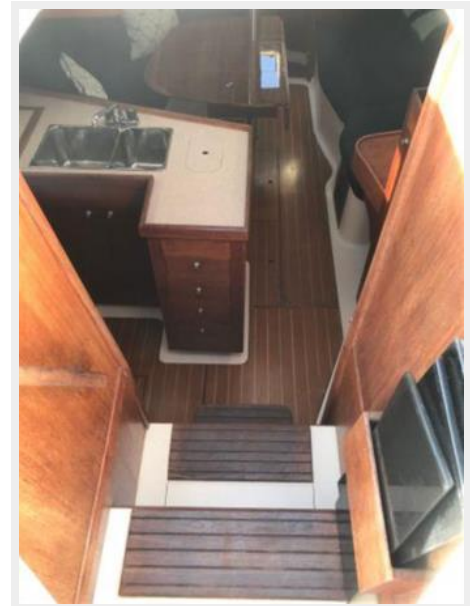
27



28



29



30



31



32



33



34



35



36



37



38



39



40



41



42



43



44



45



46



47



49



48



50



51



52



53



54



55



56



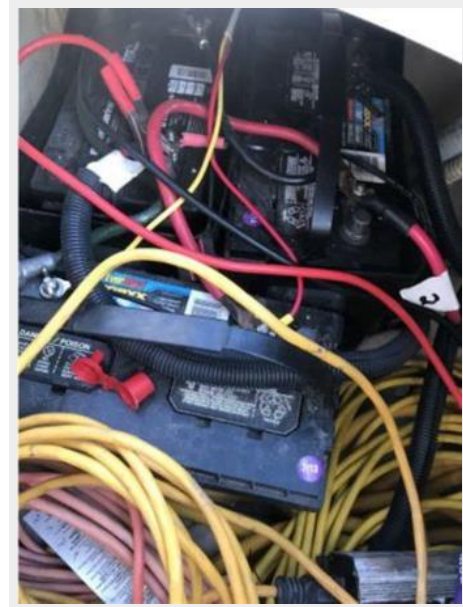
57



58



59



61



60



62



63



64



65



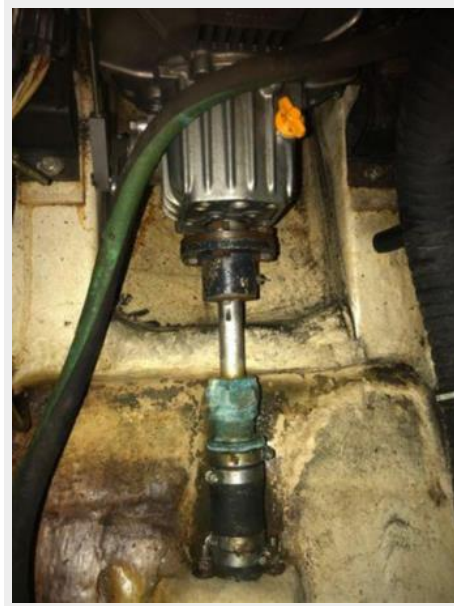
66



67



68



CONTACTS

Andrey Shestakov, leading yacht broker of the sales department of Shestakov Yacht Sales Inc. Shestakov Yacht Sales Inc., the official representative of the Miami/Fort Lauderdale FL headquarters.

Contact details

Email: andrey@shestakovyachtsales.com

Web: shestakovyachtsales.com/en/

Telephones

USA: +1(954)274-4435

Office hours

Monday – Saturday: **9:00 - 21:00** EDT

Sunday: **closed**

Address



Harbour Towne Marina, 850 NE 3rd St,
STE 213, Dania, FL 33004