

AQUA — PRESTIGE



Builder: PRESTIGE

Year Built: 2016

Model: Motor Yacht

Price: PRICE ON APPLICATION

Location: United States

LOA: 55' 0" (16.76m)

Beam: 15' 7" (4.75m)

Max Draft: 3' 10" (1.17m)

Our experienced yacht broker, Andrey Shestakov, will help you choose and buy a yacht that best suits your needs **Aqua — PRESTIGE** from our catalogue. Presently, at Shestakov Yacht Sales Inc., we have a wide variety of yachts available on our sale's list. We also work in close contact with all the big yacht manufacturers from all over the world.

If you would like to buy a yacht **Aqua — PRESTIGE** or would like help answering any questions concerning purchasing, selling or chartering a yacht, please call **+1(954)274-4435**

TABLE OF CONTENTS

TABLE OF CONTENTS	2
SPECIFICATIONS	3
Overview	3
Basic Information	3
Dimensions	3
Speed, Capacities and Weight	3
Accommodations	4
Hull and Deck Information	4
Engine Information	4
DETAILED INFORMATION	5
FEATURES & DETAILS	5
Exclusions	7
Disclaimer	7
PHOTOS	8
CONTACTS	15
Contact details	15
Telephones	15
Office hours	15
Address	15

SPECIFICATIONS

Overview

This 2016 Prestige 550 Flybridge is in stellar condition with low hours. She has always been captained maintained since the owner has taken ownership. If you're in the market for a 55'-60' motor yacht, this should be at the top of your list.

(Vessel is LLC owned and can be sold)

Key Features

- 21.5kw Cummins Onan generator
- Zeus joystick
- Cockpit docking station
- Full beam master
- Upper and lower helm station

Basic Information

Category: Motor Yacht

Model Year: 2016

Year Built: 2016

Country: United States

Fly Bridge: Yes

Cockpit: Yes

Dimensions

LOA: 55' 0" (16.76m)

Beam: 15' 7" (4.75m)

Max Draft: 3' 10" (1.17m)

Speed, Capacities and Weight

Water Capacity: 211 Gallons

Holding Tank: 32 Gallons

Fuel Capacity: 581 Gallons

Accommodations

Total Cabins: 3

Total Heads: 3

Hull and Deck Information

Hull Material: Fiberglass

Engine Information

Engines: 2

Manufacturer: Cummins

Model: QSC8.3 Zeus

Engine Type: Inboard

Fuel Type: Diesel

DETAILED INFORMATION

FEATURES & DETAILS

Cockpit

- Stairs to swim platform on starboard side
- Windlass
- 2 cleats
- Retractable Sun Awning
- Docking controls with Zeus joystick
- Cockpit table
- Bench seat
- 2 Bose speakers
- Access to crew quarter in bench seat
- Head and shower access in crew quarter
- Engine room access
- Salon sliding door
- Teak deck

Swim Platform

- Hydraulic swim platform
- 2 cleats
- Chalks for tender
- Shower access on starboard side
- Teak throughout swim platform

Flybridge

- Nonskid deck
- Table
- L-shape seating
- Magma propane grill
- Fridge
- Bimini top
- 2 Bose speakers
- Sunpad lounge across from helm
- Helm bench seat
- Helm leaning post with storage

Flybridge Electronics

- 2 Raymarine hybrid touch
- Mercury engine vessel view

- Raymarine auto pilothouse
- Smart craft- integrated marine technology
- Zeus joystick
- Quick bow thruster
- Fusion radio
- Raymarine vhf
- Plastimo compass
- Marinco search light

Bow

- Nonskid deck
- 4 cleats
- Sunpad
- Lewmar windlass
- Anchor locker storage

Salon

- Salon door
- Port side u-shape seating
- Bench seat starboard side
- Samsung tv
- Salon table
- Sunroof sky light
- Bose surround sound
- Fusion radio

Galley

- Bosch 3 burner stove
- Stainless steel sink
- A'class fridge/freezer
- Cusinart convection microwave and grill
- Plenty of cabinet storage throughout galley

Lower Helm

- Helm bench seat
- 2 Raymarine hybrid touch
- Mercury engine vessel view
- Raymarine auto pilothouse
- Smart craft- integrated marine technology
- Zeus joystick
- Quick bow thruster
- Fusion radio

- Raymarine vhf
- Plastimo compass
- Marinco search light

- Quick windlass control

VIP Stateroom

- Queen berth
- 2 hanging lockers
- Sky light
- Samsung flat screen tv
- Fusion radio
- private entry to guest head

Guest stateroom

- Side by side berths
- Hanging locker
- Flat screen tv
- Private entry to guest head

Master Stateroom

- Full beam master
- Access via private stairway from salon
- King island berth
- Walk-in closet
- Port side booth style love seats with vanity
- LG flat screen tv
- Reading lights
- En suite head

Exclusions

Owner's personal belongings.

Disclaimer

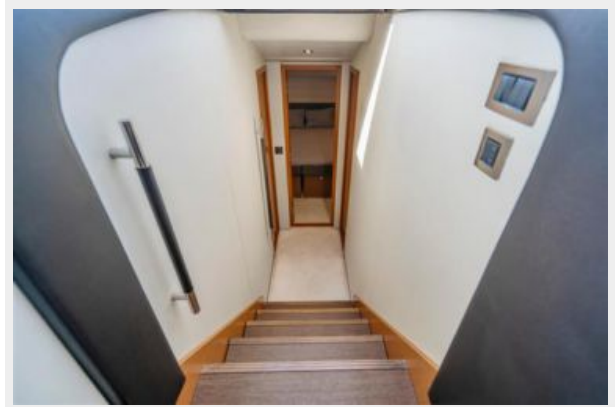
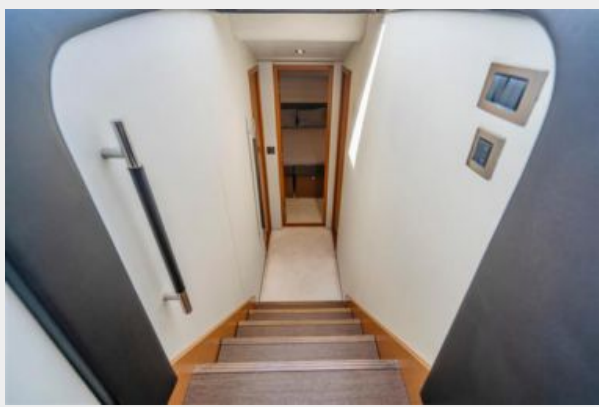
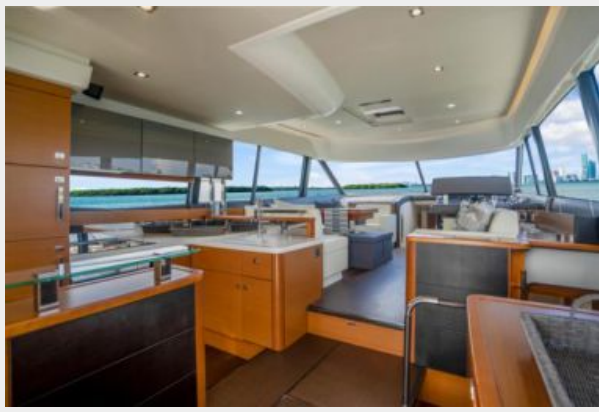
The Company offers the details of this vessel or yacht in good faith but cannot guarantee or warrant the accuracy of this information nor warrant the condition of the vessel. A buyer should instruct his representatives, agents, or his surveyors, to investigate such details as the buyer desires validated. This vessel or yacht is offered subject to prior sale, price change, or withdrawal without notice.

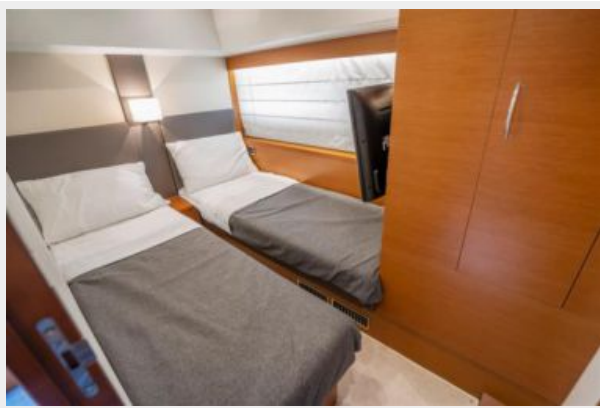
PHOTOS

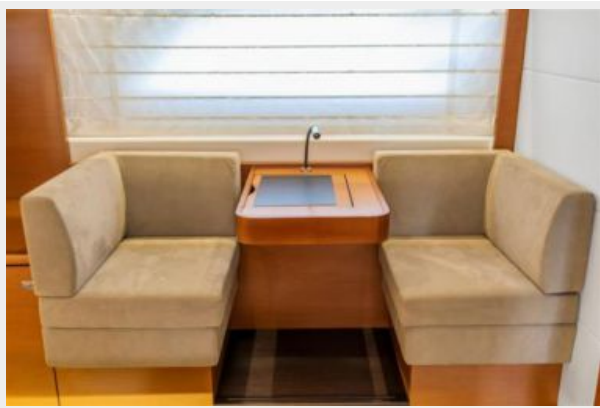














CONTACTS

Andrey Shestakov, leading yacht broker of the sales department of Shestakov Yacht Sales Inc. Shestakov Yacht Sales Inc., the official representative of the Miami/Fort Lauderdale FL headquarters.

Contact details

Email: andrey@shestakovyachtsales.com

Web: shestakovyachtsales.com/en/

Telephones

USA: +1(954)274-4435

Office hours

Monday – Saturday: **9:00 - 21:00** EDT

Sunday: **closed**

Address



Harbour Towne Marina, 850 NE 3rd St,
STE 213, Dania, FL 33004