

## 2005 39 SEA RAY MY



**Year Built:** 2005

**LOA:** 39' (11.89m)

**Model:** Motor Yacht

**Beam:** 14.25

**Price:** PRICE ON APPLICATION

Our experienced yacht broker, Andrey Shestakov, will help you choose and buy a yacht that best suits your needs. 2005 39 Sea Ray MY — n/a from our catalogue. Presently, at Shestakov Yacht Sales Inc., we have a wide variety of yachts available on our sale's list. We also work in close contact with all the big yacht manufacturers from all over the world.

If you would like to buy a yacht 2005 39 Sea Ray MY — n/a or would like help answering any questions concerning purchasing, selling or chartering a yacht, please call +1(954)274-4435

---

# TABLE OF CONTENTS

---

TABLE OF CONTENTS	2
SPECIFICATIONS	3
Overview	3
Basic Information	9
Dimensions	9
Speed, Capacities and Weight	10
Accommodations	10
Hull and Deck Information	10
Engine Information	10
PHOTOS	11
CONTACTS	18
Contact details	18
Telephones	18
Office hours	18
Address	18

---

# SPECIFICATIONS

---

## Overview

---

2005 Sea Ray 390 Motor Yacht, low hour 480 HP Cummins engines with 750 Hrs, cockpit air, cherry finish cabinets, wood flooring in galley, forward stateroom, aft stateroom, A/C, Generator, Washer/Dryer Combo, Aft Deck is enclosed with Eisenglass and is like new, vessel is loaded and a must see.

Boat just polished from waterline up 4/19, bottom was also just painted 4/19, a/c's and lines were all serviced 4/19.

New Garmin Maps GPS 16" Model 7616, connected to the Auto Pilot, also connected to the stereo system which can be controlled from your smart device, there are also new engine room and rear view cameras, which are viewed from the GPS.

Both heads have been upgraded with LED light fixtures along with LED light fixtures in the helm and aft deck area.

This boat is maintained with an open check book, both mechanically and cosmetically.

No disappointments here, the boat is immaculate and turn key.

THIS BOAT WOULD MAKE A GREAT LIVE-ABOARD OR LOOP BOAT

THIS IS WHAT SEA RAY DID TO MAKE THIS A TOP CHOICE

Sea Rays 390 differs from traditional Motor Yachts in that the helm and aft deck are on the same level. The advantage of this layout is that it keeps the captain in the social center of the boat rather than on a higher level.

From the standpoint of comfort the 390 receives high marks for her spacious interior and luxurious accommodations. The light filled salon is accented with high-gloss cherry cabinets and leather upholstery and a high/low table with stools and a breakfast bar provide dinner space.

The galley which is down from the salon level benefits from the natural light that flows from an overhead skylight. Both state rooms have private heads with full walk-in showers. Topside an extended hardtop shelters the helm, aft deck seating and wet bar. A stairway with a safety railing leads down to a large swim platform.

Other equipment of note /// Built in vacuum system, bow thruster, washer/dryer, three (3) TV including a flat screen in salon, cockpit carpet, salon carpet runner, four A/C units, windlass, molded fiberglass steps to aft deck, dockside water connection, Telephone/TV connection, hardtop, and a spotlight.

## Accommodations & Layout

The 390 is large on space with two staterooms and large salon. From the deck, one enters the bright and roomy salon with settees situated to both port and starboard. A cherry high-low dinette table is located to starboard along with the settee. Moving forward, the galley is located to starboard and includes everything needed to prepare meals for owners and guests. Continuing forward, the second stateroom is large enough to be considered a master suite. The forward VIP stateroom has innovative accommodations with a v-berth that slides and adjusts to a full sized berth to starboard. The forward head is located to port of the galley and can be accessed from forward stateroom or companionway port of galley. The master suite is located aft of the salon and is accessed to port of the companionway from the deck. The master suite has all of the comforts of home and includes a large shower and head separated by a vanity. The queen berth is situated along the center line and faces forward. Storage space is plentiful throughout the 390 Motor Yacht. Thoughtful use of space placed the washer/dryer below the step to the galley.

**The Master Suite Aft** The Master Suite is aft and down 3 steps from the salon. The Queen berth is a center line island with an extra thick mattress, plush bedspread and a huge storage area beneath the gas shock assisted mattress platform. To port you will find much more storage in mirrored lockers, cherry wood drawers and a dress length, cedar lined hanging locker.

The designers from Sea Ray have thought to put the controls for the Master Suites air conditioning/heat system as well as light switches at fingertip reach from the pillows. No fumbling around in the dark or getting back up to turn up the air or turn off the lights.

The suite is completed by an en- suite head including vanity & sink with large medicine cabinet, separate shower room forward and separate room aft with VacuFlush MSD and large linen closet. This boat is all about the optimum use of space. Not just getting it all into the boat, but making it all the best it can be for those lucky enough to own one.

- **Center Line Queen-Size Bed w/Innerspring Mattress**
- **Designer Bedspread w/ Matching Pillow Shams**
- **Large Under Bed Storage Cavity**
- **Dress Length Cedar Lined Hanging Locker**
- **Nightstand W/ Electrical Outlets**
- **Digital Air/Heat Controls**
- **TV-DVD**
- **Storage Dresser Drawer Unit**
- **Cedar lined Hanging Locker**
- **Vanity w/Integral Sink, Grohe Faucet, & Drawer Storage**
- **Custom Matching Carpet Made for the Head**
- **Large Mirrored Medicine Cabinet**
- **Cherry wood Door to Separate Room w/ Large VacuFlush MSD & Linen Locker**
- **Cherry wood Door to Separate Shower Room w/ Bath Seat & Adjustable Shower Wand**

**Master Head:**

En-suite shower with seat and adjustable shower wand Separate vanity with solid surface counter top and integrated sink Storage below vanity Chrome bath accessories Vacu-flush toilet 12V power vent Storage cabinet with mirrored door Mirrored medicine cabinet

**The VIP Stateroom Forward** One of the most well thought out guest rooms of any vessel anywhere near this size. The VIP Stateroom has a settee to port that converts to a single berth and a raised single berth to starboard that expands into a large double berth. Whether accommodating mixed gender siblings, 3 children or a guest couple the VIP Stateroom can handle it all. In addition to the hatch above the VIP Stateroom actually has a Forward Window looking out the Fore deck. If that weren't enough it also has private entry to the guest head with separate shower stall!

- **Solid Closure Cherry Privacy Door**
- **Settee to Port Converts to Twin Berth w/ Storage Beneath**
- **Twin Berth to Starboard Converts to Double Berth & Has Abundant Storage Below**
- **Storage below deck**
  
- **Full-Length Hanging Locker to Port**
  
- **TV/DVD**
  
- **Large Forward Window Adds to Bright Open Feeling**
- **Overhead Hatch w/ Sky Screen**
- **Nightstand w/ Electrical Outlet**
- **Digital Air/Heat Controls**
- **Private Entry to Guest Head**

**The Guest Head** The guest head is to port across from the galley. It is large and bright with dual entry from either the forward companionway or the VIP Stateroom and boasts a separate shower stall with full wrap-around acrylic enclosure.

- **Custom Matching Carpet for the Head**
- **Access Doors to Salon & Forward Stateroom**
- **Vanity w/ Sink, Grohe Faucet & Storage Below**
  
- **Separate Shower Stall w/ Seat and Adjustable Shower Wand**
- **Clear Acrylic Shower Enclosure**
- **Large VacuFlush MSD**
- **Mirrored Medicine Cabinet**
- **HEADS ARE VACU-FLUSH TYPE WITH HOLDING TANK SYSTEM**

## Hull and Deck

The Upper Deck on the 390MY is easily reached from three access points. The wide boarding platform aft with an Integrated Staircase as well as Port & Starboard safety rail gates leading to Heavy Duty Wing Doors.. The upper deck of the 390MY is a combination of the best parts of a pilothouse style helm and the aft deck of a traditional Aft Cabin.

This boat has the unique feature of a single level upper deck with the helm station and the aft deck seating all being on one level. No steps up to the bridge and definitely no yelling to try to communicate. Your family and guests can carry on a quiet conversation and travel easily from seats to helm on this boat all while staying cool or warm & dry in the comfort of the climate controlled Upper Deck.

The 390MY has a Hardtop over the entire upper deck to keep the elements out. Glass side windows in the helm area, a center windshield vent, an overhead hatch and the aft deck screened, Isinglass enclosure can all be opened for an abundance of fresh air.

The Upper Deck is an exceptional variation from the traditional motor yachts on the market. By eliminating the steps up to a raised bridge level covered with a canvas enclosure Sea Ray has created a room that provides a great open air feel, makes everyone part of the same party and keeps the center of gravity lower to minimize roll.

- **Full Hardtop Over Helm and Aft Deck**
- **Upper Deck Is all on One Level for Easy Communication & Movement**
- **Full Glass Windshield w/ Remote Control Vent**
- **Sliding Glass Windows to Port & Starboard of the Helm**
- **Hard Top Hatch with Sky screen System**
- **Heavy Duty Clear Acrylic Wing Doors to the Fore deck**
- **Tan Gel Coated Wet Bar with Sink Storage Base and Refrigerator**
- **Lights in hardtop w/4 switch locations**
- **Custom Cockpit Volume Control & Speaker Selector Switch for Satellite TV & Ships Stereo System**
  
- **Air Conditioning & Heat on Upper Deck**
- **Indoor/Outdoor Satellite TV Display**
- **Optional Free Standing Fiberglass Table**
- **Aft deck Carpeting**
- **Blue Canvas & Isinglass Enclosure for the Aft Deck Area**
- **Huge Zip-Out Screens for the Aft Deck Enclosure**
- **Transom Bench Seat with Storage Base**
- **Aft Deck Free Standing Table**
- **Guest Seat with Storage Base**
- **Tan Dash Gel Coat Minimizes Windshield Glare.**
- **Custom Scupper Guards**
- **Fresh Bottom Paint 2016**
- **Stainless Steel Bow Rails with Intermediate rails & Life Lines**
- **(4) Screened, Stainless Steel Port Lights**
- **Lofrans Rope/Chain Windlass w/ Fore deck Foot Switch Controls**
- **Dual Anchor Lockers w/ Fender Storage Tubes**
- **Side Boarding Gates w/ Safety Lines**
- **Transom Wall Storage Locker**

- **Molded Staircase from Boarding Platform to Upper Deck**
- **Freshwater Spigots in Engine Room & Anchor Locker**
- **Freshwater Wash down Spigots in Cockpit & on Transom**
- **Dockside Water Inlet w/ Pressure Regulator on Transom**
- **Hot & Cold Transom Shower**

## Helm

- **Curved glass windshield with electric front vent and sliding side windows**
- **Windshield wiper and washer system**
- **Windshield sunscreens**
- **High-gloss burl instrument panel**
- **Custom helm seating**
- **Emergency start system for engines**
- **Hydraulic steering system with wood accented tilt wheel**
- **Upgraded bow thruster**
- **Smartcraft digital diagnostic engine system**
- **New Garmin 16" GPS Map 7616**
- **Ray Marine C120 GPS and Radar**
- **Ray Marine Auto Pilot**

## Salon

- The salon of the 390MY is a bright & expansive room with Huge windows to port and starboard and a large skylight/window forward. Arranged with long settees on both sides the salon makes a great space for entertaining guests. The bright atmosphere is complemented by a rich cherry wood interior and warm ultra-leather upholstery. You would never expect to find this much room on a 39 foot motor yacht.
- **Huge Panoramic Windows**
- **Deep-Pile 44-ounce Carpeting with Customized Canvas Carpet Savers**
- **Elegant Granite Counter tops Throughout**
- **Seating for 8 Guests**
- **Ultra-Leather Settee to Port with Storage Base**
- **Ultra-Leather Settee to Starboard Converts to Berth**
- **20" Flat screen LCD TV**
- **Satellite TV Receiver**
- **AM/FM/Single CD, 6 CD Changer, w/ Amplifier, Sub-woofer, (8) Speakers**
- **Sirius Satellite Radio**
- **Free Standing, High Gloss Cherry Hi-Lo Table**
- **Two Stools with Ultra-Leather Top Cushions Double as Ottomans for the Settees**
- **High-low table with high gloss burl surface and two stools**
- **AM/FM single CD Clarion stereo with 6-CD changer, Amplifier, Subwoofer, 8 Speakers, Digital cockpit controls and speaker selector**

- **Rich Cherrywood interior**
- **12V Halogen lighting 12V Indirect lighting 12V Accessory outlet**
- **Miniblinds**
- **Phone outlet**

## **Galley**

The chef on the 390 is surrounded by light from the side windows as well as the overhead skylight window. The warm cherry wood cabinetry and one-piece molded fiberglass counter top show the "Fit & Finish" Sea Ray is famous for. The galley of the 390 is down 3 steps from the salon. It is forward to starboard with a serving counter separating it from the salon area. When you are relaxing in the salon on the 390 you won't feel like you are spending the night sitting in the galley. The galley features hardwood flooring, ample storage cabinets and drawers, a deep double stainless sink, Princess 3 burner electric stove, convection microwave, refrigerator with separate freezer and built-in coffee maker.

- **Hardwood Galley Flooring**
- **Full Size 110v Refrigerator w/ Separate Freezer**
- **Microwave / Convection Oven**
  
- **Grohe Designer Faucet W/ Sprayer**
- **Breakfast/Serving Counter w/ Granite Counter top**
- **Trash Receptacle w/ Thru-Counter Chute and Corian Cover**
- **Lots of Storage cabinets**
- **Under deck storage**
- **11 Gal water heater**

## **Electrical System**

- **9kw Onan generator**
- **Glendinning Cablemaster**
- **50 Amp shore power cable**
- **Shore power isolation transformer**
- **110 volt AC system**
- **12 volt DC system**
- **Battery charger**
- **4 Batteries**

## **Mechanical Equipment**

- **Twin Cummins 480CE Diesels for Maximum Performance & Reliability**
- **Bow Thruster W/ Joystick Controller & Custom Overheat Control Sensor**
- **Automatic Oil Changer for Engines and Generator**
- **Engine Synchronizer w/ Cruise Control Settings**
- **Cable master Shore Power Cord System with Remote Control!**
- **Shore Power ISO Booster Transformer**



- **Shore Water Connection with Water Pressure Control**
- **Custom Conversion to Yacht Series Water Control Manifold System W/ Individual Device Water Shutoffs**
- **Onan 9.0 kw Generator w/ Remote Start**
- **30,000 BTU Reverse Cycle Air & Heat with Digital controls for Salon/VIP Stateroom & Master Suite**
- **Carbon Monoxide Monitors Throughout the Vessel**
- **Duel Trumpet Air Horns**
- **Under Water Exhaust Ports**
- **Nibral 4 Blade Propellers**
- **Dripless Shaft Log Seals w/ Extra Seal Carrier Kit**
- **Hydraulic Trim Tabs**
- **Holding Tank Level Indicators**
- **Lofrans Rope/Chain Windlass w/ Fore deck Foot Switch Controls**

## Deck Gear

The upgrades on this 390MY surpass the equipment on many much larger yachts. The owner has had many very nice custom modifications to the boat as well.

- **Washer / Dryer Combination Unit in Hidden Area Below Forward Stairs**
- **Beam Central Vacuum System**
- **Large Aft Deck, Zip-In Screen Enclosure**
- **Glendenning Cable Master for Shore Power Cords w/ Remote Control**
- **Vetus Bow Thruster w/ Joystick Controller & Special Ordered Overheat Safety Control**
- **Engine Synchronizer**
- **Custom Quadruple Wide, Extra Thick Sun Bed with Integrated Pillows & Custom Zip-On Vinyl Sun Bed Cover**
- **Yacht Flag Pole & Flag**
- **Dual Bulb Halogen Spotlight**

## Basic Information

**Category:** Motor Yacht

**Model Year:** 2005

**Year Built:** 2005

## Dimensions

**LOA:** 39' (11.89mm)

**Beam:** 14.25

---

## Speed, Capacities and Weight

---

**Water Capacity:** 100 Gallons

**Holding Tank:** 54 Gal Gallons

**Fuel Capacity:** 300 Gal Gallons

---

## Accommodations

---

**Total Cabins:** 2

**Total Berths:** 4

**Sleeps:** 5

**Total Heads:** 2

---

## Hull and Deck Information

---

**Hull Material:** Fiberglass

---

## Engine Information

---

**Engines:** 2

**Manufacturer:** Cummins

**Engine Type:** Inboard

**Fuel Type:** Diesel

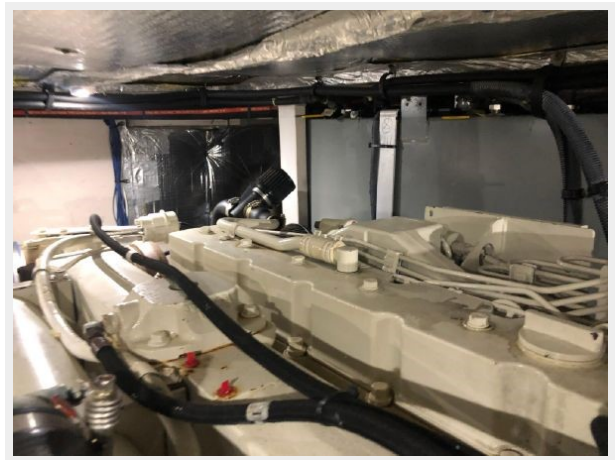
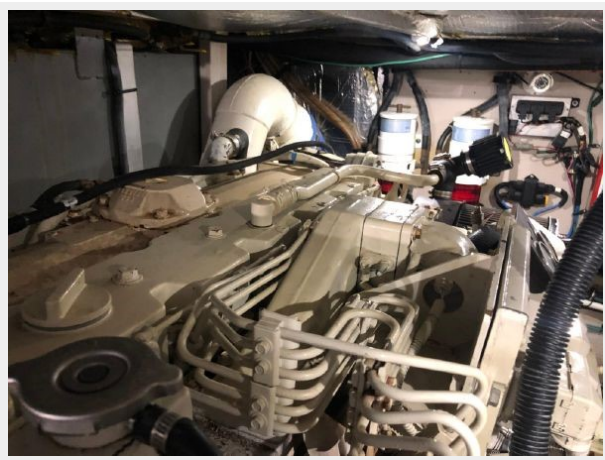
# PHOTOS

















# CONTACTS

---

Andrey Shestakov, leading yacht broker of the sales department of Shestakov Yacht Sales Inc. Shestakov Yacht Sales Inc., the official representative of the Miami/Fort Lauderdale FL headquarters.

## Contact details

---

Email: [andrey@shestakovyachtsales.com](mailto:andrey@shestakovyachtsales.com)

Web: [shestakovyachtsales.com/en/](http://shestakovyachtsales.com/en/)

## Telephones

---

USA: +1(954)274-4435

## Office hours

---

Monday – Saturday: **9:00 - 21:00** EDT

Sunday: **closed**

## Address

---



Harbour Towne Marina, 850 NE 3rd St,  
STE 213, Dania, FL 33004