

ENDLESS JOY — CAPE DORY



Builder: CAPE DORY

Year Built: 1979

Model: Cruising Sailboat

Price: PRICE ON APPLICATION

Location: United States

LOA: 24' 10" (7.57m)

Beam: 7' 3" (2.21m)

Max Draft: 3' 0" (0.91m)

Cruise Speed: 5 Kts. (6 MPH)

Max Speed: 5 Kts. (6 MPH)

Our experienced yacht broker, Andrey Shestakov, will help you choose and buy a yacht that best suits your needs **Endless Joy — CAPE DORY** from our catalogue. Presently, at Shestakov Yacht Sales Inc., we have a wide variety of yachts available on our sale's list. We also work in close contact with all the big yacht manufacturers from all over the world.

If you would like to buy a yacht **Endless Joy — CAPE DORY** or would like help answering any questions concerning purchasing, selling or chartering a yacht, please call **+1(954)274-4435**

TABLE OF CONTENTS

TABLE OF CONTENTS	2
SPECIFICATIONS	5
Overview	5
Basic Information	5
Dimensions	5
Speed, Capacities and Weight	5
Accommodations	5
Hull and Deck Information	6
Engine Information	6
PHOTOS	7
3	7
2	7
4	7
5	7
6	8
7	8
8	8
9	8
10	8
11	8
12	9
13	9
15	9
14	9
16	9
17	9
18	10
19	10

20	10
21	10
22	11
23	11
24	11
25	11
26	12
27	12
28	12
29	12
30	13
31	13
32	13
33	13
34	13
35	13
36	14
37	14
39	14
38	14
40	15
41	15
43	15
42	15
44	16
45	16
46	16
47	16
48	16

49	16
50	17
51	17
52	17
CONTACTS	18
Contact details	18
Telephones	18
Office hours	18
Address	18

SPECIFICATIONS

Overview

1979 Cape Dory 25, spent most of her life in Maine. She has a brand new Yamaha 6 HP for her engine well. New Raymarine Tiller 1000 autopilot, new Garmin 54DV plotter, new 1700 MX VHF, new battery charger, new bilge pump, new DC panel, new AC panel, new shore outlet, new sail cover, newer sails, new cockpit cushions, and 2 year old running rigging. The mast has been recently re-wired, new anchor light, new deck/steaming light, antenna, antenna wire, two new house batteries, bottom paint, and new depth transducer.

Basic Information

Category: Cruising Sailboat

Model Year: 1979

Year Built: 1979

Country: United States

Dimensions

LOA: 24' 10" (7.57m)

LWL: 18' 0" (5.49m)

Beam: 7' 3" (2.21m)

Max Draft: 3' 0" (0.91m)

Speed, Capacities and Weight

Cruise Speed: 5 Kts. (6 MPH)

Max Speed: 5 Kts. (6 MPH)

Displacement: 4000 Pounds

Fuel Capacity: 6 Gallons

Accommodations

Total Cabins: 2

Total Heads: 1

Hull and Deck Information

Hull Material: Fiberglass

Engine Information

Engines: 1

Manufacturer: Yamaha

Model: 4 stroke

Engine Type: Outboard

Fuel Type: Gas

PHOTOS

2



3



4



5



6



7



8



9



10



11



12



13



14



15



16



17



18



19



20



21



22



23



24



25



26



27



28



29



30



31



32



33



34



35



36



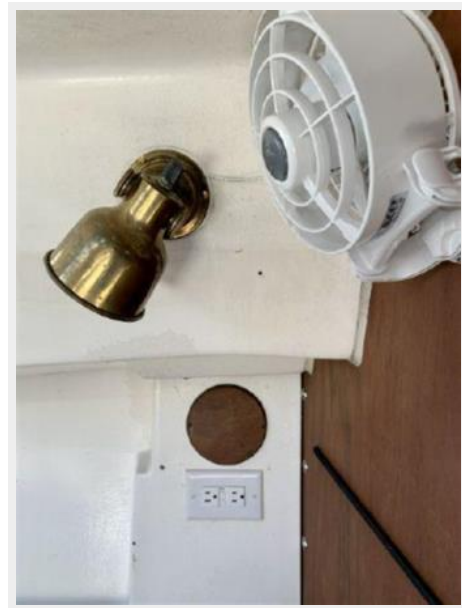
37



38



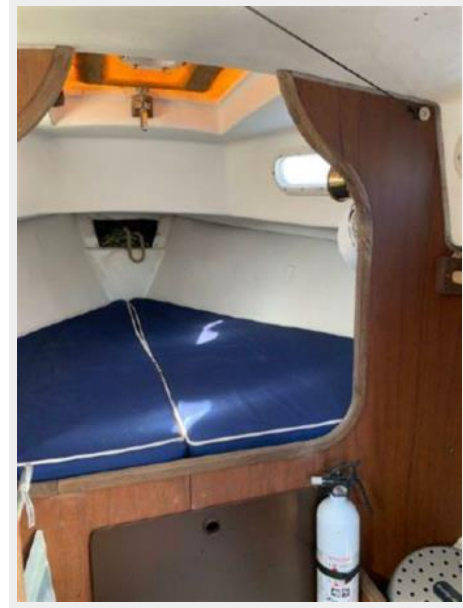
39



40



41



42



43



44



45



46



47



48



49



50



51



52



CONTACTS

Andrey Shestakov, leading yacht broker of the sales department of Shestakov Yacht Sales Inc. Shestakov Yacht Sales Inc., the official representative of the Miami/Fort Lauderdale FL headquarters.

Contact details

Email: andrey@shestakovyachtsales.com

Web: shestakovyachtsales.com/en/

Telephones

USA: +1(954)274-4435

Office hours

Monday – Saturday: **9:00 - 21:00** EDT

Sunday: **closed**

Address



Harbour Towne Marina, 850 NE 3rd St,
STE 213, Dania, FL 33004