

## CRUZAN — SILVERTON



**Builder:** SILVERTON

**Year Built:** 1988

**Model:** Motor Yacht

**Price:** PRICE ON APPLICATION

**Location:** United States

**LOA:** 40' 0" (12.19m)

**Beam:** 14' 0" (4.27m)

**Max Draft:** 3' 0" (0.91m)

Our experienced yacht broker, Andrey Shestakov, will help you choose and buy a yacht that best suits your needs **Cruzan — SILVERTON** from our catalogue. Presently, at Shestakov Yacht Sales Inc., we have a wide variety of yachts available on our sale's list. We also work in close contact with all the big yacht manufacturers from all over the world.

If you would like to buy a yacht **Cruzan — SILVERTON** or would like help answering any questions concerning purchasing, selling or chartering a yacht, please call **+1(954)274-4435**

# TABLE OF CONTENTS

TABLE OF CONTENTS	2
SPECIFICATIONS	4
Overview	4
Basic Information	4
Dimensions	4
Speed, Capacities and Weight	4
Accommodations	4
Hull and Deck Information	5
Engine Information	5
DETAILED INFORMATION	6
MAIN DESCRIPTION	6
DISCLAIMER	6
Exclusions	6
Disclaimer	6
PHOTOS	7
1	7
2	7
3	7
4	7
5	7
6	7
8	8
7	8
9	8
10	8
11	8
12	8
13	9

---

14	9
15	9
16	9
17	10
CONTACTS	11
Contact details	11
Telephones	11
Office hours	11
Address	11

---

# SPECIFICATIONS

---

## Overview

---

If you are looking for a turn key cruiser for the Chesapeake Bay, look no further! The Silverton 40 was clearly designed to appeal to the weekend cruiser market and came equipped with just about everything required for immediate use. Cruzan is a 1988 40' Silverton Convertible that has been very well cared for. Her engines are extremely well maintained and once aboard you will find that so has the rest of the boat. \*Dinghy with outboard is included in the sale of this vessel.

## Basic Information

---

**Category:** Motor Yacht

**Sub Category:** Flybridge

**Model Year:** 1988

**Year Built:** 1988

**Country:** United States

## Dimensions

---

**LOA:** 40' 0" (12.19m)

**Beam:** 14' 0" (4.27m)

**Max Draft:** 3' 0" (0.91m)

## Speed, Capacities and Weight

---

**Displacement:** 22000 Pounds

**Water Capacity:** 25 Gallons

**Fuel Capacity:** 150 Gallons

## Accommodations

---

**Total Cabins:** 1

**Total Berths:** 3

---

## Hull and Deck Information

---

**Hull Material:** Fiberglass

---

## Engine Information

---

**Engines:** 1

**Manufacturer:** Crusader

**Model:** 454

**Engine Type:** Inboard

**Fuel Type:** Gas/Petrol

---

# DETAILED INFORMATION

---

## MAIN DESCRIPTION

---

If you are looking for a turn key cruiser for the Chesapeake Bay, look no further! The Silverton 40 was clearly designed to appeal to the weekend cruiser market and came equipped with just about everything required for immediate use. Cruzan is a 1988 40' Silverton Convertible that has been very well cared for. Her engines are extremely well maintained and once aboard you will find that so has the rest of the boat. \*Dinghy with outboard is included in the sale of this vessel.

## DISCLAIMER

---

The Company offers the details of this vessel in good faith but cannot guarantee or warrant the accuracy of this information nor warrant the condition of the vessel. A buyer should instruct his agents, or his surveyors, to investigate such details as the buyer desires validated. This vessel is offered subject to prior sale, price change, or withdrawal without notice.

## Exclusions

---

Owner's personal belongings.

## Disclaimer

---

The Company offers the details of this vessel or yacht in good faith but cannot guarantee or warrant the accuracy of this information nor warrant the condition of the vessel. A buyer should instruct his representatives, agents, or his surveyors, to investigate such details as the buyer desires validated. This vessel or yacht is offered subject to prior sale, price change, or withdrawal without notice.

# PHOTOS

1



2



3



4



5



6

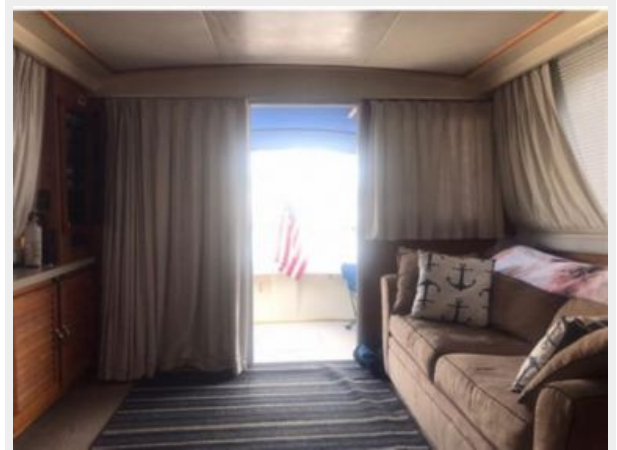




7



8



9



10



11



12





13



14



15



16



17



# CONTACTS

---

Andrey Shestakov, leading yacht broker of the sales department of Shestakov Yacht Sales Inc. Shestakov Yacht Sales Inc., the official representative of the Miami/Fort Lauderdale FL headquarters.

## Contact details

---

Email: [andrey@shestakovyachtsales.com](mailto:andrey@shestakovyachtsales.com)

Web: [shestakovyachtsales.com/en/](http://shestakovyachtsales.com/en/)

## Telephones

---

USA: +1(954)274-4435

## Office hours

---

Monday – Saturday: **9:00 - 21:00** EDT

Sunday: **closed**

## Address

---



Harbour Towne Marina, 850 NE 3rd St,  
STE 213, Dania, FL 33004