

N/A — HATTERAS



Builder: HATTERAS

LOA: 50' 0" (15.24m)

Year Built: 2000

Beam: 16' 1" (4.90m)

Model: Sport Fisherman

Price: PRICE ON APPLICATION

Location: United States

Our experienced yacht broker, Andrey Shestakov, will help you choose and buy a yacht that best suits your needs N/A — HATTERAS from our catalogue. Presently, at Shestakov Yacht Sales Inc., we have a wide variety of yachts available on our sale's list. We also work in close contact with all the big yacht manufacturers from all over the world.

If you would like to buy a yacht N/A — HATTERAS or would like help answering any questions concerning purchasing, selling or chartering a yacht, please call +1(954)274-4435

TABLE OF CONTENTS

TABLE OF CONTENTS	2
SPECIFICATIONS	5
Basic Information	5
Dimensions	5
Speed, Capacities and Weight	5
Accommodations	5
Hull and Deck Information	5
Engine Information	5
DETAILED INFORMATION	6
Deck and Hull	6
Flybridge	6
Salon	7
Galley	7
Master Stateroom	7
Master Head	8
VIP Stateroom	8
Guest Stateroom	8
Head	8
Mechanical	8
Electronical	9
Engine Room	9
Exclusions	9
Disclaimer	9
PHOTOS	10
IMG_5014	10
IMG_5015	10
IMG_5016	10
IMG_5017	10

IMG_5018	11
IMG_5019	11
IMG_5020	11
IMG_5021	11
IMG_5022	12
IMG_5023	12
IMG_5024	12
IMG_5025	12
IMG_5026	13
IMG_5027	13
IMG_5028	13
IMG_5029	13
IMG_5030	14
IMG_5031	14
IMG_5032	14
IMG_5033	14
IMG_5034	15
IMG_5035	15
IMG_5036	15
IMG_5037	15
IMG_5039	16
IMG_5038	16
IMG_5040	16
IMG_5041	16
IMG_5042	16
IMG_5043	16
IMG_5044	17
IMG_5045	17
IMG_5047	17

IMG_5046	17
IMG_5048	18
IMG_5049	18
IMG_5051	18
IMG_5050	18
IMG_5052	19
IMG_5053	19
IMG_5054	19
IMG_5055	19
IMG_5056	19
IMG_5057	19
IMG_5058	20
IMG_5059	20
IMG_5060	20
IMG_5061	20
IMG_5062	20
IMG_5063	20
CONTACTS	21
Contact details	21
Telephones	21
Office hours	21
Address	21

SPECIFICATIONS

Basic Information

Category: Sport Fisherman

Model Year: 2000

Year Built: 2000

Country: United States

Dimensions

LOA: 50' 0" (15.24m)

Beam: 16' 1" (4.90m)

Speed, Capacities and Weight

Water Capacity: 184 Gallons

Fuel Capacity: 1060 Gallons

Accommodations

Total Cabins: 3

Hull and Deck Information

Hull Material: Fiberglass

Engine Information

Engines: 2

Manufacturer: CAT

Model: CAT 3412E

Engine Type: Inboard

Fuel Type: Diesel

DETAILED INFORMATION

Deck and Hull

- Icemaker
- Cockpit controls
- Transom Door
- Cockpit sink
- Live bait well
- Fresh water washdown
- Freezer with variable control
- Molded fiberglass tackle center
- Pipewelders tuna tower with center ladder
- Center rigger
- 36' Rupp outriggers
- Custom front sunpad
- Stainless steel rails
- Murray Brothers ladder back and fighting chair
- Maxwell windlass with chain and rope

Flybridge

- Garmin GPS map 7215
- Garmin GPS map XSU
- Sea 235 SSB
- (2) Sea 156 VHF
- (2) Teaser reels command X58
- Fusion M8-NRX2001
- ACR spotlight
- 5" Ritchie compass
- Simrad AP20 autopilot
- Furuno radar
- furuno FCV-1100L depth recorder
- (2) Custom Murray Brothers ladderback chairs
- Fuel tank gauges
- Bennett trim tabs
- Icom IC-M127 VHF Radio
- Dual Trumpet electric/air horn
- Hatteras Systems Monitor Panel
- B&G HS2000 Speed/distance log, depth & water temp
- SAT TV

Salon

- Custom Fabrics
- High Gloss Cherry Wood
- Bose Sound system
- Flat screen TV
- JL Audio
- SAT TV system
- L Shaped leather sofa
- Sectional storage underneath cushions
- Custom compass rose cocktail table with storage
- U-line icemaker
- Central vacuum system
- Wood blinds
- Custom valance boards
- Cherry wood sea rails
- SMX AC controls
- Double dark window tint
- Carpeting with matching runner
- Custom lighting with dimmer switches
- Overhead lighting with dimmer switch
- Bose system with touchpad and surround sound

Galley

- Custom Corian countertops
- Molded sink and custom faucet
- Amtico teak and maple flooring
- Raised panel cabinetry
- Under-counter sub zero refrigerator/freezer drawers
- 2 burner stovetop
- Sharpe microwave
- Custom dinette with storage under seating
- Cherry wood table pedestal
- Entertainment Center
- Stereo CD Player
- Whirlpool stackable washer/dryer in companionway

Master Stateroom

- Queen Tapered berth
- Fabric headboard

- Mirrored bulkhead
- Nightstand with drawers
- cedar lined hanging locker with drawers
- reading lamps
- TV/VCR
- Private AC with SMX controls
- Stereo system

Master Head

- Full stand up shower
- Solid countertop with backsplash
- Full mirror with storage
- Vacu-flush head with fresh water

VIP Stateroom

- Queen berth
- TV/VCR
- Private AC with SMX controls

Guest Stateroom

- Over/Under berth
- Flip down LCD television

Head

- Full shower

Mechanical

- Twin Caterpillar engines
- Model 3412
- Total Power: 1400
- Full CAT service at 4600 hours
- Full top end updated at 4600 hours

Electrical

- 24V Electrical system
- Dockside electrical cable
- Battery parallel switch
- 4 batteries
- Battery Charger
- (2) ARC remote lights

Engine Room

- Twin CAT 3412E
- Fuel filters
- Twin disc transmission
- Oil changing system
- 17.5kw phasor generator w/ 587 hours - NEW 3/2017
- Overhead lighting
- Trim tabs
- Fire control system
- Emergency engine stop
- Fuel shut-off valve
- Bilge blowers
- Engine synchronizers
- Engine temperature alarm

Exclusions

Owner's personal belongings.

Disclaimer

The Company offers the details of this vessel or yacht in good faith but cannot guarantee or warrant the accuracy of this information nor warrant the condition of the vessel. A buyer should instruct his representatives, agents, or his surveyors, to investigate such details as the buyer desires validated. This vessel or yacht is offered subject to prior sale, price change, or withdrawal without notice.

PHOTOS

IMG_5014



IMG_5015



IMG_5016



IMG_5017



IMG_5018



IMG_5019



IMG_5020



IMG_5021



IMG_5022



IMG_5023



IMG_5024



IMG_5025



IMG_5026



IMG_5027



IMG_5028



IMG_5029



IMG_5030



IMG_5031



IMG_5032



IMG_5033



IMG_5034



IMG_5035



IMG_5036



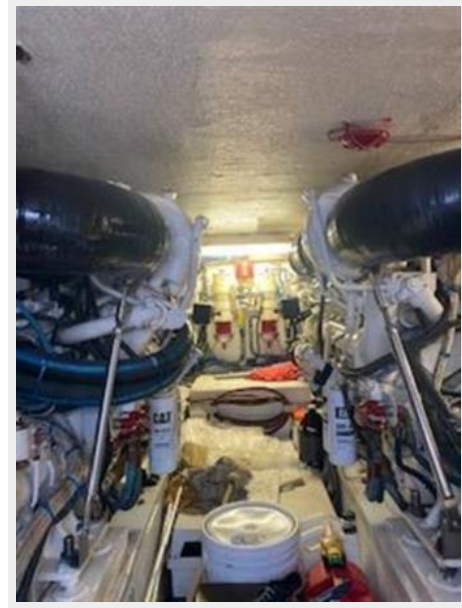
IMG_5037



IMG_5038



IMG_5039



IMG_5040



IMG_5041



IMG_5042



IMG_5043



IMG_5044



IMG_5045



IMG_5047



IMG_5046



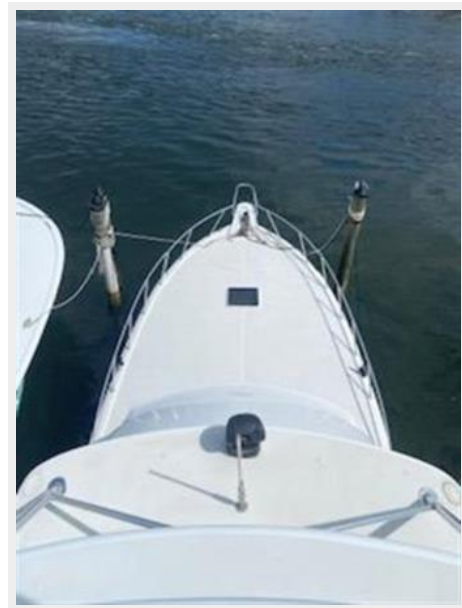
IMG_5048



IMG_5049



IMG_5051



IMG_5050



IMG_5052



IMG_5053



IMG_5054



IMG_5055



IMG_5056



IMG_5057



IMG_5058



IMG_5059



IMG_5060



IMG_5061



IMG_5062



IMG_5063



CONTACTS

Andrey Shestakov, leading yacht broker of the sales department of Shestakov Yacht Sales Inc. Shestakov Yacht Sales Inc., the official representative of the Miami/Fort Lauderdale FL headquarters.

Contact details

Email: andrey@shestakovyachtsales.com

Web: shestakovyachtsales.com/en/

Telephones

USA: +1(954)274-4435

Office hours

Monday – Saturday: **9:00 - 21:00** EDT

Sunday: **closed**

Address



Harbour Towne Marina, 850 NE 3rd St,
STE 213, Dania, FL 33004