

## ATHENA — CALIFORNIAN



**Builder:** CALIFORNIAN

**Year Built:** 1989

**Model:** SHELBY

**Price:** PRICE ON APPLICATION

**Location:** United States

**LOA:** 55' 0" (16.76m)

**Beam:** 15' 2" (4.62m)

**Max Draft:** 4' 3" (1.30m)

**Cruise Speed:** 10 Kts. (12 MPH)

**Max Speed:** 17 Kts. (20 MPH)

Our experienced yacht broker, Andrey Shestakov, will help you choose and buy a yacht that best suits your needs **Athena — CALIFORNIAN** from our catalogue. Presently, at Shestakov Yacht Sales Inc., we have a wide variety of yachts available on our sale's list. We also work in close contact with all the big yacht manufacturers from all over the world.

If you would like to buy a yacht **Athena — CALIFORNIAN** or would like help answering any questions concerning purchasing, selling or chartering a yacht, please call **+1(954)274-4435**

# TABLE OF CONTENTS

TABLE OF CONTENTS	2
SPECIFICATIONS	5
Overview	5
Basic Information	5
Dimensions	5
Speed, Capacities and Weight	5
Accommodations	6
Hull and Deck Information	6
Engine Information	6
DETAILED INFORMATION	7
Athena 55 CPMY	7
Exclusions	10
Disclaimer	10
PHOTOS	11
DSC_0046	11
DSC_0053	11
DSC_0049	11
DSC_0043	11
DSC_0042	11
DSC_0040	11
DSC_0039	12
DSC_0038	12
DSC_0045	12
DSC_0055	12
DSC_0056	12
DSC_0057	12
DSC_0059	13
DSC_0060	13

---

DSC_0061	13
DSC_0062	13
DSC_0064	13
DSC_0066	13
DSC_0067	14
DSC_0068	14
DSC_0069	14
DSC_0070	14
DSC_0071	14
DSC_0072	14
DSC_0073	15
DSC_0074	15
DSC_0075	15
DSC_0076	15
DSC_0077	15
DSC_0078	15
DSC_0001	16
DSC_0002	16
DSC_0003	16
DSC_0004	16
DSC_0005	17
DSC_0006	17
DSC_0007	17
DSC_0008	17
DSC_0009	18
DSC_0010	18
DSC_0011	18
DSC_0012	18
DSC_0013	18

---

---

DSC_0014	18
DSC_0015	19
DSC_0016	19
DSC_0018	19
DSC_0017	19
DSC_0019	19
DSC_0020	19
DSC_0021	20
DSC_0022	20
DSC_0023	20
DSC_0024	20
DSC_0025	21
DSC_0026	21
DSC_0027	21
DSC_0028	21
DSC_0029	22
DSC_0030	22
DSC_0031	22
DSC_0032	22
DSC_0033	22
DSC_0034	22
DSC_0035	23
CONTACTS	24
Contact details	24
Telephones	24
Office hours	24
Address	24

---

# SPECIFICATIONS

---

## Overview

---

The 55' Californian Cockpit MY is considered by most the best looking of this style vessel and this one is very special. Her rakish flush-deck profile adds to the well thought of design. The 55 remains one to the most sought after boats due to the high quality construction and excellent craftsmanship. Her three stateroom interior is tastefully furnished with teak cabinetry and woodwork throughout. A slide out settee in the guest stateroom aft of the salon converts into a double berth, and all three heads are fitted with separate shower stalls. The upscale interior is lavishly decorated with quality fabrics and furnishings throughout. The salon is will appointed and boasts a spacious layout. The aft deck is also very spacious as is the flybridge. **Also featuring Air Conditioning, Bow Thrusters, Engine Synchronizers and Stabilizers.** This 55 Californian is conveniently located at our docks on Shelter Island in San Diego, CA

## Basic Information

---

**Category:** SHELBY

**Sub Category:** Cockpit

**Model Year:** 1989

**Year Built:** 1989

**Country:** United States

**Coast Guard #:** 1135799

**Fly Bridge:** Yes

**Cockpit:** Yes

## Dimensions

---

**LOA:** 55' 0" (16.76m)

**Beam:** 15' 2" (4.62m)

**Max Draft:** 4' 3" (1.30m)

**Clearance:** 17' 3" (5.26m)

## Speed, Capacities and Weight

---

**Cruise Speed:** 10 Kts. (12 MPH)

**Max Speed:** 17 Kts. (20 MPH)

**Gross Tonnage:** 23 Pounds

**Water Capacity:** 210 Gallons

**Holding Tank:** 80 Gallons

**Fuel Capacity:** 650 Gallons

---

## Accommodations

---

**Total Cabins:** 3

---

## Hull and Deck Information

---

**Hull Material:** Fiberglass

**Deck Material:** Fiberglass

**Hull Configuration:** Semi-Displacement

**Hull Finish:** Polyethylene

**Hull Designer:** Marshal Marine

---

## Engine Information

---

**Engines:** 2

**Manufacturer:** CAT

**Model:** 3208 TA

**Engine Type:** Inboard

**Fuel Type:** Diesel

---

# DETAILED INFORMATION

---

## Athena 55 CPMY

---

### ***TRULY EXCEPTIONAL***

The 55' Californian Cockpit MY is considered by most the best looking of this style vessel and this one is very special. Her rakish flush-deck profile adds to the well thought of design. The 55 remains one to the most sought after boats due to the high quality construction and excellent craftsmanship. Her three stateroom interior is tastefully furnished with teak cabinetry and woodwork throughout. A slide out settee in the guest stateroom aft of the salon converts into a double berth, and all three heads are fitted with separate shower stalls. The upscale interior is lavishly decorated with quality fabrics and furnishings throughout. The salon is will appointed and boasts a spacious layout. The aft deck is also very spacious as is the flybridge. ***Also featuring Air Conditioning, Bow Thrusters, Engine Synchronizers and Stabilizers.*** This 55 Californian is conveniently located at our docks on Shelter Island in San Diego, CA

### ***MUST SEE TO BELIEVE, WAY BEYOND THE AVERAGE***

#### Accommodations

The Californian 55 CPMY, sleeps six in three private staterooms with three heads. The guest stateroom is forward with a centerline queen plus head with shower, and followed aft by the galley and horseshoe dinette. Up four steps, the huge main salon is full width amidships and tastefully appointed in warm colors; the entertainment center is forward to port. Continuing aft and down, the third stateroom has a single berth that pulls out to become a bed, head with shower, and the stacking washer/dryer. The master suite is full width aft with a centerline queen, built-in nightstands, bureaus and lockers, cockpit access and a private head with shower and tub. 6'6" headroom. All appointed with warm colors throughout. Also boasting a spacious flybridge and well designed sundeck.

#### Additional Information

### Electronics/Navigation

- Radar
- Autopilot
- VHF
- GPS/Plotter
- Televisions (Salon & Master)
- Added Speakers
- Fuel Consumption Instrument

- 16kW /120V Kohler Generator
- (8) 12V House/Starting Batteries
- Sentry G160-3NL 60 Amp Battery Charger
- 2500 Watt Inverter w/Remote Control
- All Fluorescent & Incandescent Lights Replaced w/Haolgen or LED

## Engine Room/Mechanical

Engine 1: Engine Brand: Caterpillar Year Built: 1989 Engine Model: 3208TA Engine Type:  
Inboard Location: Starboard Drive Type: Direct Drive Engine Power: 375 HP



Engine Hours:989 Engine 2: Engine Brand: Caterpillar Year Built: 1989 Engine Model: 3208TA  
Engine Type: Inboard Engine/Fuel Type: Diesel Location: Port Drive Type: Direct Drive Engine  
Power: 375 HP

Engine Hours: 986

**UPGRADES:** Refurbished and/or replaced every cooling component in each engine. From the through hull fitting to the mufflers, including each heat exchanger, after cooler and oil cooler.

Replaced every sanitation hose, rebuilt all Vacuflush toilets and pumps.

- Glendinning Engine Synchronizers
- Wesmar Bow Thrusters
- 3-Zone Marine Air Reverse Cycle AC
- Bronze Sea Strainers
- Racor Fuel Filters
- FlowScan Fuel Flow Meter
- All New Fire Extinguishers 2/12
- Stainless Steel Tool Box (added to engine room)
- Frigidaire LC-120D Stack Washer/Dryer

## Deck/Hull

- West Marine/Avon Inflatable w/ new Outboard (under 10hrs)
- (2) Bennett Hydraulic Trim Tabs
- Wesmar Gyro Hydraulic Stabilizers
- Bronze V-Struts
- New Padded Bolster, Shower, Stainless Steel Magma Grill & Carpet in Cockpit
- Reconfigured & Upgraded Helm
- Resurfaced & Painted Foredeck
- (32) Life Vests
- Electronic Bird Deterrent
- Double Well Pacific Edge Bait Tank
- Cockpit Teak Table
- Isinglass & Bimini
- Wesmar Gyro Stabilizers
- Wesmar Electric Bow Thruster (Recently installed new Motor)
- Trim Tabs
- Cockpit Flood Light
- Maxwell Nilsson Vertical Electric Windlass w/Remote Control (Recently Rebuilt)
- Flybridge Dinghy Davit
- Swim Platform w/Flip Up Stainless Steel & Teak Swim Ladder
- Weaver Dinghy Snap Davit (on swim platform)
- (4) Rod Holders

- Fish Cleaning Board
- Fiberglass Anchor Spirit w/Single Stainless Steel Anchor Chock
- Sundeck w/Hard Top& Eisinglass Enclosure

### **Additional Mentions**

Fly Bridge dingy Davit 10' inflatable with NEW Outboard

Wesmar Bow Thrusters

Marine Air Conditioning (3 zone)

Wesmar Gyro Hydraulic Stabilizers

Glendenning Engine Synchronizes

Electric windlass with remote (Recent Rebuild)

***This an exceptional 55' Californian***, featuring a spacious and comfortable design, offering three staterooms, three heads, modern galley, a spacious 7' cockpit, and a large Air Conditioned Aft Deck. The golden teak interior is impeccably kept, beautifully decorated and appointed with numerous amenities including washer and dryer. To top it off 3208 TA Caterpillar Diesels..

**Exclusions:** Personal items not included (which also include the wooden clock, stereo, sub-woofer, mid speaker, tools that are not special to boat, all other personal effects).

## **Exclusions**

---

Owner's personal belongings.

## **Disclaimer**

---

The Company offers the details of this vessel or yacht in good faith but cannot guarantee or warrant the accuracy of this information nor warrant the condition of the vessel. A buyer should instruct his representatives, agents, or his surveyors, to investigate such details as the buyer desires validated. This vessel or yacht is offered subject to prior sale, price change, or withdrawal without notice.

# PHOTOS

DSC\_0046



DSC\_0053



DSC\_0049



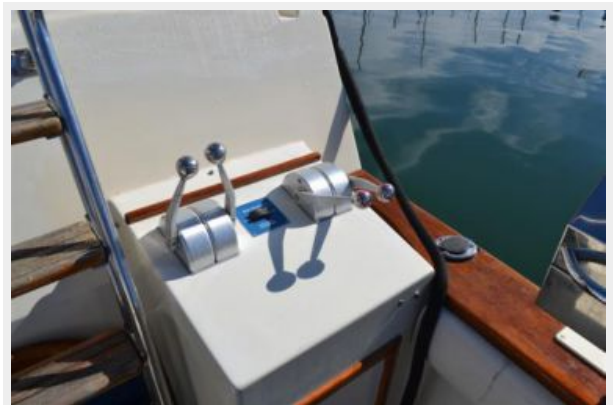
DSC\_0043



DSC\_0042



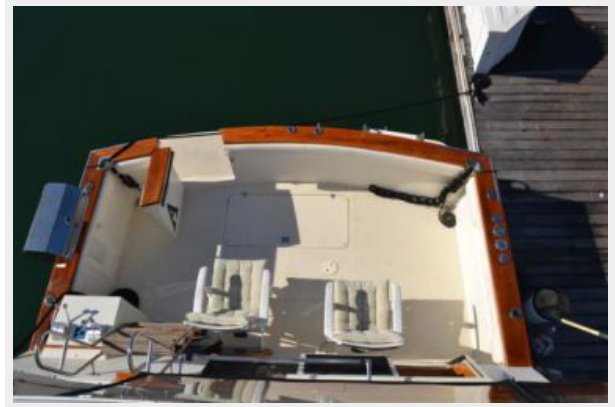
DSC\_0040



DSC\_0039



DSC\_0038



DSC\_0045



DSC\_0055



DSC\_0056



DSC\_0057



DSC\_0059



DSC\_0060



DSC\_0061



DSC\_0062



DSC\_0064



DSC\_0066



DSC\_0067



DSC\_0068



DSC\_0069



DSC\_0070



DSC\_0071



DSC\_0072



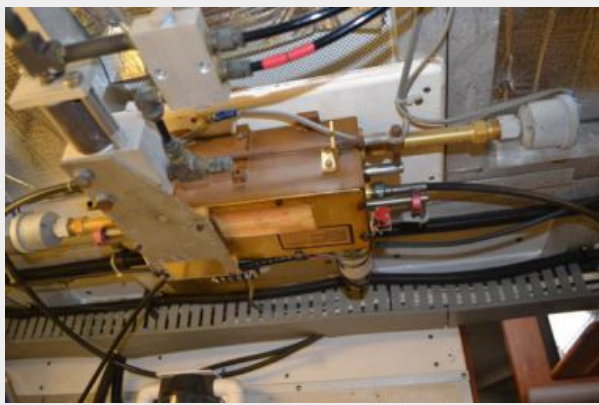
DSC\_0073



DSC\_0074



DSC\_0075



DSC\_0076



DSC\_0077



DSC\_0078



DSC\_0001



DSC\_0002



DSC\_0003



DSC\_0004





DSC\_0005



DSC\_0006



DSC\_0007



DSC\_0008



DSC\_0009



DSC\_0010



DSC\_0011



DSC\_0012



DSC\_0013



DSC\_0014



DSC\_0015



DSC\_0016



DSC\_0018



DSC\_0017



DSC\_0019



DSC\_0020



DSC\_0021



DSC\_0022



DSC\_0023



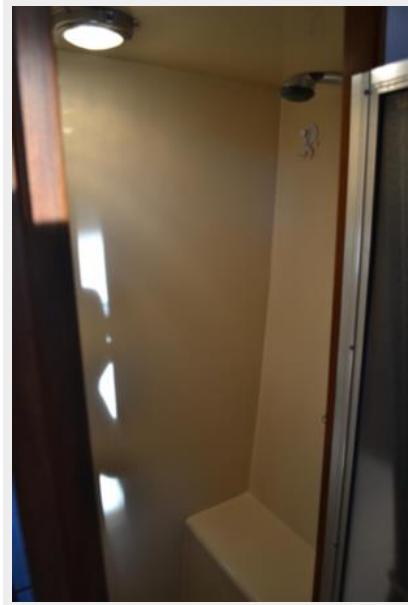
DSC\_0024



DSC\_0025



DSC\_0026



DSC\_0027



DSC\_0028



DSC\_0029



DSC\_0030



DSC\_0031



DSC\_0032



DSC\_0033



DSC\_0034



DSC\_0035



# CONTACTS

---

Andrey Shestakov, leading yacht broker of the sales department of Shestakov Yacht Sales Inc. Shestakov Yacht Sales Inc., the official representative of the Miami/Fort Lauderdale FL headquarters.

## Contact details

---

Email: [andrey@shestakovyachtsales.com](mailto:andrey@shestakovyachtsales.com)

Web: [shestakovyachtsales.com/en/](http://shestakovyachtsales.com/en/)

## Telephones

---

USA: +1(954)274-4435

## Office hours

---

Monday – Saturday: **9:00 - 21:00** EDT

Sunday: **closed**

## Address

---



Harbour Towne Marina, 850 NE 3rd St,  
STE 213, Dania, FL 33004