

ATHENA — CALIFORNIAN



Судостроитель: CALIFORNIAN

Год постройки: 1989

Модель: SHELBY

Цена: **ЦЕНА ЯХТЫ ПО ЗАПРОСУ**

Местонахождение: United States

Длина общая: 55' 0" (16.76m)

Ширина: 15' 2" (4.62m)

Макс. осадка: 4' 3" (1.30m)

Крейс. скорость: 10 Kts. (12 MPH)

Макс. скорость: 17 Kts. (20 MPH)

Купить **Athena — CALIFORNIAN** а также выбрать подходящую вам яхту из нашего каталога яхт вам поможет опытный яхтенный брокер Андрей Шестаков. На сегодняшний день компания **Shestakov Yacht Sales Inc.** имеет большое количество яхт в собственном списке продаж, а также тесно сотрудничает со всеми крупными яхтенными производителями по всему миру.

Для того чтобы купить яхту **Athena — CALIFORNIAN** а также проконсультироваться по любому вопросу связанному с покупкой, продажей, чартером яхт позвоните по телефону **+7(918)465-66-44**.

ОГЛАВЛЕНИЕ

ОГЛАВЛЕНИЕ	2
ХАРАКТЕРИСТИКИ	5
Обзор	5
Основная информация	5
Размеры	5
Скорость, вместимость и масса	5
Размещение	6
Корпус и палуба	6
Информация о двигателе	6
ПОДРОБНОЕ ОПИСАНИЕ	7
Athena 55 СРМУ	7
Исключения	10
Отказ от ответственности	10
ФОТОГРАФИИ	11
DSC_0046	11
DSC_0053	11
DSC_0049	11
DSC_0043	11
DSC_0042	11
DSC_0040	11
DSC_0039	12
DSC_0038	12
DSC_0045	12
DSC_0055	12
DSC_0056	12
DSC_0057	12
DSC_0059	13
DSC_0060	13

DSC_0061	13
DSC_0062	13
DSC_0064	13
DSC_0066	13
DSC_0067	14
DSC_0068	14
DSC_0069	14
DSC_0070	14
DSC_0071	14
DSC_0072	14
DSC_0073	15
DSC_0074	15
DSC_0075	15
DSC_0076	15
DSC_0077	15
DSC_0078	15
DSC_0001	16
DSC_0002	16
DSC_0003	16
DSC_0004	16
DSC_0005	17
DSC_0006	17
DSC_0007	17
DSC_0008	17
DSC_0009	18
DSC_0010	18
DSC_0011	18
DSC_0012	18
DSC_0013	18

DSC_0014	18
DSC_0015	19
DSC_0016	19
DSC_0018	19
DSC_0017	19
DSC_0019	19
DSC_0020	19
DSC_0021	20
DSC_0022	20
DSC_0023	20
DSC_0024	20
DSC_0025	21
DSC_0026	21
DSC_0027	21
DSC_0028	21
DSC_0029	22
DSC_0030	22
DSC_0031	22
DSC_0032	22
DSC_0033	22
DSC_0034	22
DSC_0035	23
КОНТАКТЫ	24
Контактная информация	24
Телефоны	24
Время работы	24
Адрес	24

ХАРАКТЕРИСТИКИ

Обзор

The 55' Californian Cockpit MY is considered by most the best looking of this style vessel and this one is very special. Her rakish flush-deck profile adds to the well thought of design. The 55 remains one to the most sought after boats due to the high quality construction and excellent craftsmanship. Her three stateroom interior is tastefully furnished with teak cabinetry and woodwork throughout. A slide out settee in the guest stateroom aft of the salon converts into a double berth, and all three heads are fitted with separate shower stalls. The upscale interior is lavishly decorated with quality fabrics and furnishings throughout. The salon is will appointed and boasts a spacious layout. The aft deck is also very spacious as is the flybridge. **Also featuring Air Conditioning, Bow Thrusters, Engine Synchronizers and Stabilizers.** This 55 Californian is conveniently located at our docks on Shelter Island in San Diego, CA

Основная информация

Тип судна: SHELBY	Подкатегория: Кубрик
Модельный год: 1989	Год постройки: 1989
Страна: United States	Номер регистрации в береговой охране: 1135799
Открытая палуба мостика: Да	Кубрик: Да

Размеры

Длина общая: 55' 0" (16.76m)	Ширина: 15' 2" (4.62m)
Макс. осадка: 4' 3" (1.30m)	Трапы: 17' 3" (5.26m)

Скорость, вместимость и масса

Крейс. скорость: 10 Kts. (12 MPH)	Макс. скорость: 17 Kts. (20 MPH)
Чистый вес: 23 Pounds	Вместимость воды: 210 Gallons
Вместимость сточного бака: 80 Gallons	Объем топливного бака: 650 Gallons

Размещение

Всего кают: 3

Корпус и палуба

Материал корпуса: Fiberglass

Материал палубы: Fiberglass

Комплектация корпуса: Semi-Displacement

Отделка корпуса: Polyethylene

Дизайнер корпуса: Marshal Marine

Информация о двигателе

Двигатели: 2

Производитель: CAT

Модель: 3208 TA

Тип двигателя: Inboard

Тип топлива: Diesel

ПОДРОБНОЕ ОПИСАНИЕ

Athena 55 CPMY

TRULY EXCEPTIONAL

The 55' Californian Cockpit MY is considered by most the best looking of this style vessel and this one is very special. Her rakish flush-deck profile adds to the well thought of design. The 55 remains one to the most sought after boats due to the high quality construction and excellent craftsmanship. Her three stateroom interior is tastefully furnished with teak cabinetry and woodwork throughout. A slide out settee in the guest stateroom aft of the salon converts into a double berth, and all three heads are fitted with separate shower stalls. The upscale interior is lavishly decorated with quality fabrics and furnishings throughout. The salon is well appointed and boasts a spacious layout. The aft deck is also very spacious as is the flybridge. **Also featuring Air Conditioning, Bow Thrusters, Engine Synchronizers and Stabilizers.** This 55 Californian is conveniently located at our docks on Shelter Island in San Diego, CA

MUST SEE TO BELIEVE, WAY BEYOND THE AVERAGE

Accommodations

The Californian 55 CPMY, sleeps six in three private staterooms with three heads. The guest stateroom is forward with a centerline queen plus head with shower, and followed aft by the galley and horseshoe dinette. Up four steps, the huge main salon is full width amidships and tastefully appointed in warm colors; the entertainment center is forward to port. Continuing aft and down, the third stateroom has a single berth that pulls out to become a bed, head with shower, and the stacking washer/dryer. The master suite is full width aft with a centerline queen, built-in nightstands, bureaus and lockers, cockpit access and a private head with shower and tub. 6'6" headroom. All appointed with warm colors throughout. Also boasting a spacious flybridge and well designed sundeck.

Additional Information

Electronics/Navigation

- Radar
- Autopilot
- VHF
- GPS/Plotter
- Televisions (Salon & Master)
- Added Speakers
- Fuel Consumption Instrument

- 16kW /120V Kohler Generator
- (8) 12V House/Starting Batteries
- Sentry G160-3NL 60 Amp Battery Charger
- 2500 Watt Inverter w/Remote Control
- All Flourescent & Incandescent Lights Replaced w/Haolgen or LED

Engine Room/Mechanical

Engine 1: Engine Brand: Caterpillar Year Built: 1989 Engine Model: 3208TA Engine Type:
Inboard Location: Starboard Drive Type: Direct Drive Engine Power: 375 HP

Engine Hours:989 Engine 2: Engine Brand: Caterpillar Year Built: 1989 Engine Model: 3208TA
Engine Type: Inboard Engine/Fuel Type: Diesel Location: Port Drive Type: Direct Drive Engine
Power: 375 HP

Engine Hours: 986

UPGRADES: Refurbished and/or replaced every cooling component in each engine. From the through hull fitting to the mufflers, including each heat exchanger, after cooler and oil cooler.

Replaced every sanitation hose, rebuilt all Vacuflush toilets and pumps.

- Glendinning Engine Synchronizers
- Wesmar Bow Thrusters
- 3-Zone Marine Air Reverse Cycle AC
- Bronze Sea Strainers
- Racor Fuel Filters
- FlowScan Fuel Flow Meter
- All New Fire Extinguishers 2/12
- Stainless Steel Tool Box (added to engine room)
- Frigidaire LC-120D Stack Washer/Dryer

Deck/Hull

- West Marine/Avon Inflatable w/ new Outboard (under 10hrs)
- (2) Bennett Hydraulic Trim Tabs
- Wesmar Gyro Hydraulic Stabilizers
- Bronze V-Struts
- New Padded Bolster, Shower, Stainless Steel Magma Grill & Carpet in Cockpit
- Reconfigured & Upgraded Helm
- Resurfaced & Painted Foredeck
- (32) Life Vests
- Electronic Bird Deterrent
- Double Well Pacific Edge Bait Tank
- Cockpit Teak Table
- Isinglass & Bimini
- Wesmar Gyro Stabilizers
- Wesmar Electric Bow Thruster (Recently installed new Motor)
- Trim Tabs
- Cockpit Flood Light
- Maxwell Nilsson Vertical Electric Windlass w/Remote Control (Recently Rebuilt)
- Flybridge Dinghy Davit
- Swim Platform w/Flip Up Stainless Steel & Teak Swim Ladder
- Weaver Dinghy Snap Davit (on swim platform)
- (4) Rod Holders

- Fish Cleaning Board
- Fiberglass Anchor Spirit w/Single Stainless Steel Anchor Chock
- Sundeck w/Hard Top& Eisinglass Enclosure

Additional Mentions

Fly Bridge dingy Davit 10' inflatable with NEW Outboard

Wesmar Bow Thrusters

Marine Air Conditioning (3 zone)

Wesmar Gyro Hydraulic Stabilizers

Glendenning Engine Synchronizes

Electric windlass with remote (Recent Rebuild)

This an exceptional 55' Californian, featuring a spacious and comfortable design, offering three staterooms, three heads, modern galley, a spacious 7' cockpit, and a large Air Conditioned Aft Deck. The golden teak interior is impeccably kept, beautifully decorated and appointed with numerous amenities including washer and dryer. To top it off 3208 TA Caterpillar Diesels..

Exclusions: Personal items not included (which also include the wooden clock, stereo, sub-woofer, mid speaker, tools that are not special to boat, all other personal effects).

Исключения

При продаже яхты исключаются личные вещи владельца.

Отказ от ответственности

Компания предоставляет описание судна или яхты добросовестно, но не может гарантировать точность этой информации, а также не ручается за техническое состояние. Покупатель должен проинструктировать своих агентов или оценщиков исследовать представленную информацию более подробно, по собственному желанию. Продажа судна или яхты, изменение цены или снятие с продажи будет происходить без предварительного уведомления.

ФОТОГРАФИИ

DSC_0046



DSC_0053



DSC_0049



DSC_0043



DSC_0042



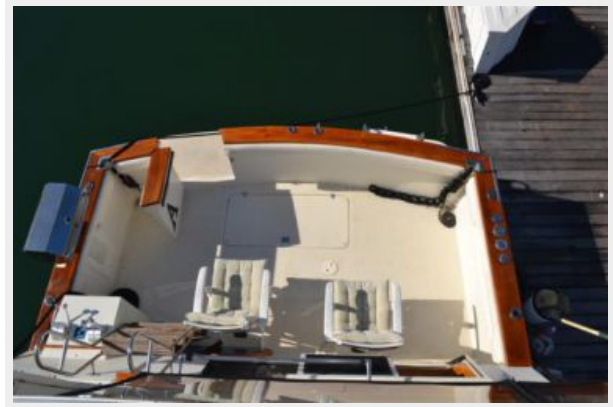
DSC_0040



DSC_0039



DSC_0038



DSC_0045



DSC_0055



DSC_0056



DSC_0057



DSC_0059



DSC_0060



DSC_0061



DSC_0062



DSC_0064



DSC_0066



DSC_0067



DSC_0068



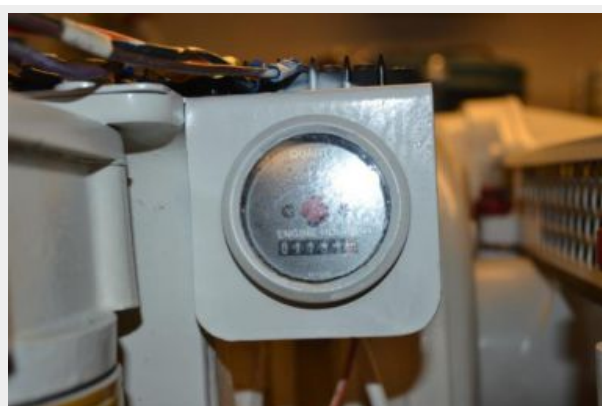
DSC_0069



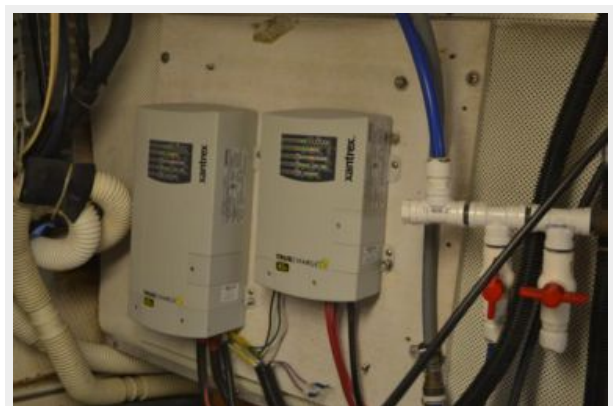
DSC_0070



DSC_0071



DSC_0072



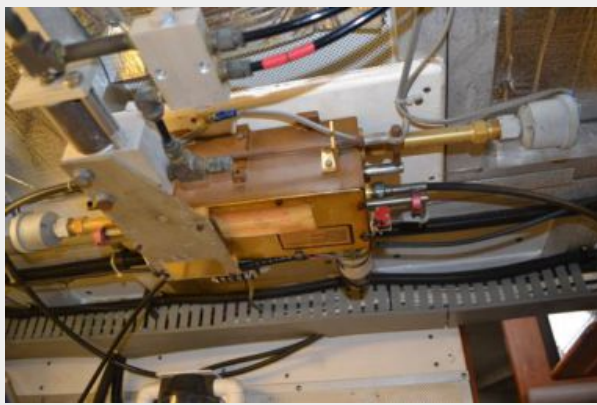
DSC_0073



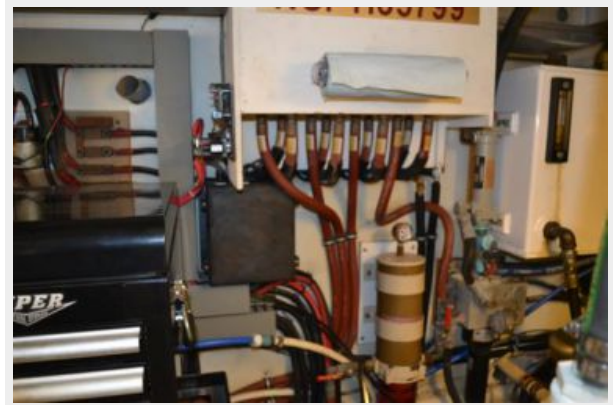
DSC_0074



DSC_0075



DSC_0076



DSC_0077



DSC_0078



DSC_0001



DSC_0002



DSC_0003



DSC_0004



DSC_0005



DSC_0006



DSC_0007



DSC_0008



DSC_0009



DSC_0010



DSC_0011



DSC_0012



DSC_0013



DSC_0014



DSC_0015



DSC_0016



DSC_0018



DSC_0017



DSC_0019



DSC_0020



DSC_0021



DSC_0022



DSC_0023



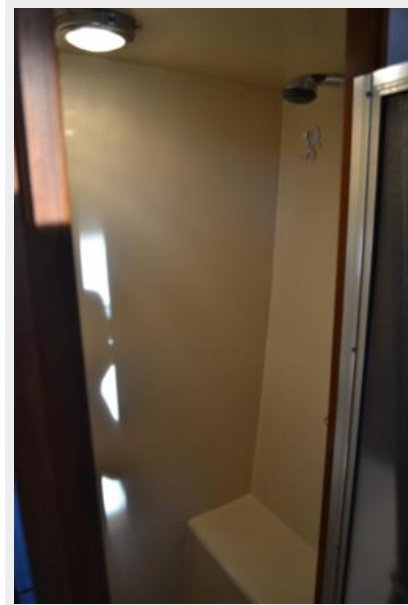
DSC_0024



DSC_0025



DSC_0026



DSC_0027



DSC_0028



DSC_0029



DSC_0030



DSC_0031



DSC_0032



DSC_0033



DSC_0034



DSC_0035



КОНТАКТЫ

Андрей Шестаков (Andrey Shestakov) – ведущий яхтенный брокер отдела продаж яхт и судов компании Shestakov Yacht Sales Inc. Официальный представитель Shestakov Yacht Sales Inc. для русскоговорящих клиентов в центральном офисе компании в Майами/Форт Лодердейл/Флорида/США.

Контактная информация

Email: andrey@shestakovyachtsales.com

Web: shestakovyachtsales.com

Телефоны

Краснодарский край: **+7(918)465-66-44**

США, Майами, Флорида: **+1(954)274-4435**

Время работы

Понедельник – Суббота: **9:00 - 21:00**
EDT

Воскресенье: **Закрето**

Адрес



Harbour Towne Marina, 850 NE 3rd St,
STE 213, Dania, FL 33004