

## JC ONE — AZIMUT



**Судостроитель:** [AZIMUT](#)

**Год постройки:** 2012

**Модель:** Моторная яхта

**Цена:** ЦЕНА ЯХТЫ ПО ЗАПРОСУ

**Местонахождение:** United States

**Длина общая:** 53' 0" (16.15m)

**Ширина:** 15' 6" (4.72m)

**Макс. осадка:** 4' 5" (1.35m)

Купить **JC One — AZIMUT** а также выбрать подходящую вам яхту из нашего каталога яхт вам поможет опытный яхтенный брокер Андрей Шестаков. На сегодняшний день компания **Shestakov Yacht Sales Inc.** имеет большое количество яхт в собственном списке продаж, а также тесно сотрудничает со всеми крупными яхтенными производителями по всему миру.

Для того чтобы купить яхту **JC One — AZIMUT** а также проконсультироваться по любому вопросу связанному с покупкой, продажей, чартером яхт позвоните по телефону **+7(918)465-66-44**.

# ОГЛАВЛЕНИЕ

---

ОГЛАВЛЕНИЕ	2
ХАРАКТЕРИСТИКИ	3
Обзор	3
Основная информация	3
Размеры	3
Скорость, вместимость и масса	3
Размещение	4
Корпус и палуба	4
Информация о двигателе	4
ПОДРОБНОЕ ОПИСАНИЕ	5
Details and Features	5
Исключения	13
Отказ от ответственности	13
ФОТОГРАФИИ	15
КОНТАКТЫ	32
Контактная информация	32
Телефоны	32
Время работы	32
Адрес	32

# ХАРАКТЕРИСТИКИ

## Обзор

- 2nd Owner
- Over 50k in upgrades in Electronics and Stereo System
- FLIR Night Vision Camera
- 9 underwater lights multi-color
- 1000 hours full service completed
- Last maintenance done October 2020: engines, generator, and

transmission service

- Engines and Services batteries replaced 2020
- Set of spare propellers
- Marquipt boarding ladder

## Основная информация

**Тип судна:** Моторная яхта

**Модельный год:** 2012

**Год постройки:** 2012

**Страна:** United States

**Открытая палуба мостика:** Да

**Кубрик:** Да

## Размеры

**Длина общая:** 53' 0" (16.15m)

**Ширина:** 15' 6" (4.72m)

**Макс. осадка:** 4' 5" (1.35m)

## Скорость, вместимость и масса

**Вместимость воды:** 156 Gallons

**Вместимость сточного бака:** 59 Gallons

**Объем топливного бака:** 618 Gallons

---

## Размещение

---

Всего кают: 3

Всего ком. состава: 2

---

## Корпус и палуба

---

Материал корпуса: Fiberglass

---

## Информация о двигателе

---

Двигатели: 2

Производитель: MAN

Модель: RS 730

Тип двигателя: Inboard

Тип топлива: Diesel

# ПОДРОБНОЕ ОПИСАНИЕ

## Details and Features

### Extra Options

- Glendenning cable master for the shore power cord
- Refrigerator in cockpit
- Cockpit table
- Refrigerator on flybridge
- Washer dryer combo
- Sunbathing cushions on flybridge and bow
- Teak on the cockpit, flybridge, and side decks
- Wooden floor in the salon, dinette, and helm
- Miele Appliances
- Complete AV package
- HD Satellite Television in all 3 staterooms and salon
- Bow, Cockpit, and Flybridge cushion covers
- Spare Props
- Crew courters, A/C, Head/Shower, bunk
- Joystick Control for Engines and Bow Thruster
- Bow Thruster
- Double Racor filters for main engines
- Remote spotlight with additional control on flybridge helm
- Stainless Steel Vitrefrigo Ice maker - Cockpit
- (9) Underwater lights multi-color
- Security Camera - Cockpit
- Security Camera - lower Helm
- Camera - Engine Room and Aft Deck

### Notable Features

- Twin MAN RS V-Drives (730 HP Each)
- Xenta Joystick Control for Engines & Thrusters
- Bow Thruster
- FLIR Night Vision Camera
- Teak Deck on Flybridge
- Teak Side Decks
- Washer/Dryer in Master Stateroom
- Security System
- Underwater Lights (9) Multi-Color
- Marquipt Boarding Ladder
- Salon Icemaker
- Double Racor Filters for Each Engine

- Cockpit Table
- Glendenning Cable Master
- Upgraded Master Head
- Cockpit Refrigerator
- Flybridge Refrigerator

## Navigation Instruments

- Twin E70369-00-NAG, Axiom 12 RV, 12" MFD with integrated RealVision 3D, 600W Sonar, Lower Helm
- I70s Multifunction Instrument Display - Lower Helm
- P70Rs Raymarine Autopilot Control Head - Lower Helm
- 3D Transducer
- RAYMARINE T70427, AXIOM XL 16 - 15.6" Glass Bridge Multifunction Display with RCR-SD/USB & Honk - Fly,
- FLIR M232 Pan and Tilt Marine Thermal Camera
- P70Rs Raymarine Autopilot Control Head - Upper Helm
- Raymarine i40 Depth Display - Upper Helm

## External Layout & Standard Equipment

### Flybridge

- The large flybridge is accessed from the outside (steps from the cockpit, port side).
- GRP cockpit steps with 6 steps
- External steps faced in teak
- Teak floor
- Waterproof access hatch in aluminum and Plexiglas
- Smoked Plexiglas windshield with stainless steel and aluminum frame
- GRP roll bar
- Stainless steel handrails
- A sunbathing area on the bow
- Helm station: a fixed seat for 1-person, adjustable steering wheel control (a wheel with four spokes, painted white)
- L-shaped sofa joined with stern sunbathing area
- Teak table with a central leg in stainless steel
- 1 bow peak
- Waste bin in flybridge unit
- Sink with cold water
- Stainless steel lights support
- The pilot console includes main engine control instruments, alarm LEDs, engine ignition controls, fore anchor-winch controls, horn control, trim tab controls, bow thruster control, adjustable searchlight on control, standard 12V cigar lighter socket, chain meter counter.

### Bow

- Anchor peak with drainage and fenders compartment
- Delta anchor
- Calibrated anchor chain
- Bow roller
- Winch
- Two cleats in stainless steel
- Sunbathing area
- Chain washdown

## Walkways

- Fuel fillers
- Freshwater filler
- Blackwater discharge outlet
- 2 stainless steel cleats
- Teak floor
- Handrails on flybridge
- Stainless steel and high-strength PVC rub rail
- Pulpit

## Cockpit

- Access to the cockpit from a stainless steel and Plexiglas gate
- Telescopic gangway OPACMARE in teak and steel with access from cockpit bench
- 2 stainless steel cleats
- Warping station: overall dimensions
- LH/RH stainless steel stern cable gland with button
- Saloon access door with 2 stainless steel-crystal glass shutters
- C-shaped cockpit bench for 4 people
- Cushions for cockpit bench
- Side peak on the left
- Engine compartment access from the cockpit floor
- Crew cabin access from the cockpit bench, port side
- Teak floor
- Curved handrail on the stern platform
- Handrail for the flybridge access staircase
- Handles on cockpit bench arms
- Lighting: spots on the ceiling
- Hot and cold-water shower mixer

## Platform

- Fixed
- Lights on the stern bathing platform
- Teak floor

- Telescopic bathing ladder in stainless steel

## Interior arrangement and features

### Main deck Helm station

- Electric Pilot seat for two people (also reverses for use in the dinette area – height-adjustable seat and opposable backrest)
- Electric windows
- Adjustable steering wheel
- The helm includes Controls: bow thruster control, MINI COMMAND electronic remote controls, trim tab controls, trim tab indicators, bow anchor winch control, horn, navigation lights, windshield wiper, and washer controls, bilge pumps activation, side window control, black and grey water discharge control, engine room fan control, cigar lighter socket, shore plug LED, chain washer switch, fuel gauge, black water, greywater, and freshwater indicators
- Engine control instrumentation: engine ignition, rev. counter, hour counter, engine thermometers and manometers, ammeters, alarm lights

### Saloon & Dinette

- Decapé oak wood furniture
- Lamp in the galley partition column
- Unit on the starboard side
- 3-seater sofa on the port side
- 1 armchair on the port side (fore)
- 1 pouf on the port side (aft)
- TV system with aerial (sockets in saloon and master cabin)
- Access to the lower deck via steps (carpeted)
- Ceiling and walls covered in 2-colour fabric (ivory and brown)
- Curtains for windows, aft, and sliding blind for saloon door
- Radio/CD player
- Fixed rectangular table in the dinette
- 1 sofa in dinette
- Storage under the dinette sofa.

### Galley

- Oak floor varnished with decapé effect
- Aquagard worktop and splashback
- 3 burner ceramic glass hob with fiddle rail
- Air extractor in the ceiling with active carbon filters (recycled air)
- Microwave oven + grill
- Fridge-freezer
- Bar unit
- Electric window.



## Lower deck

- Lower deck access via carpeted steps
- Spotlights
- Bulkhead covered in beige
- Handrail in the corridor.

## Master Cabin

- Situated amidships
- 1 double bed, placed diagonally with headboard on bow side
- Oakwood headboard, with storage behind
- 2-night tables
- Vanity table with seats on left side
- 3 wall cabinets
- 2-drawer unit
- 2 wardrobes with hanging rails
- 1 wardrobe with shelves
- Shelf around the bed
- 2 peaks under the bed
- Spotlights
- 2 openable portholes
- 6 windows, 3 on each side
- Deck hatch (emergency exit above the bed)
- Head access from the master cabin entrance corridor
- 1 mirror in the vanity table
- 1 mirror in the wardrobe
- Wooden Venetian blinds
- Bulkhead covering in fabric and wood paneling (oak)
- Fabric ceiling (beige + brown)
- TV system

## Master Head Compartment

- Located fore of the master cabin, port side (below galley)
- Entrance from the master cabin
- Brandy-colored (brown) cold glass oval washbasin with oak wood top
- TECMA WC
- Chrome-plated mixer tap
- Separate shower cubicle with flat door
- Shower column and seat in metallic brown
- Cabinet with 2 sliding doors above washbasin top
- Ivory-colored ceiling
- Lighting: downlight on cabinet and spots in the shower
- 1 openable porthole with wooden Venetian blind

- Decapé oak floor with solid wood shower grating
- Air extractor: forced suction, through shower ceiling
- Head accessories.

## VIP cabin

- On bow
- Fixed double bed
- Fixed oak headboard
- 2 wall units above the windows
- 1 wardrobe on the stern bulkhead, starboard side, with rail and shelves
- 1 wardrobe on the stern bulkhead, port side, with hanging rail
- Shelves on bedside bulkhead
- 2 peaks under the bed
- 2 appliqué lights on the headboard
- Spotlights
- Direct access to the head compartment
- Carpeted floor
- Windows
- Deck hatch
- Wooden Venetian blinds
- Fabric-covered bulkheads
- Ceilings: portal in oak, the ceiling in ivory GRP with fabric panels over the bed.

## VIP head

- Located aft of the VIP cabin, on the port side
- Entrance from the VIP cabin or from the corridor
- TECMA WC
- Brandy-colored (brown) cold glass oval washbasin with oak wood top
- Chrome-plated mixer tap
- Round shower cubicle (3 doors)
- Shower column in metallic brown ABS
- Cabinet with 2 sliding doors above the washbasin top
- Lighting: downlight on cabinet and spots in the shower
- Round openable porthole with wooden Venetian blinds
- Decapé oak floor with solid wood grating
- Natural air extraction
- Head accessories.

## Guest Cabin

- On starboard side
- 2 single fixed beds Headboard with mirror and oak panels
- 1-night table between the two beds (2 opening compartments)

- 1 wardrobe with hanging rail and shelves
- 3 peaks under the bed
- Ceilings: portal in oak and ceiling in ivory GRP with a fabric panel
- 1 round openable porthole
- Wooden Venetian blind
- Carpeted floor
- Spotlights
- 2 appliqués on the headboard

## Standard Technical Specifications

- Twin E70369-00-NAG, Axiom 12 RV, 12" MFD with integrated RealVision 3D, 600W Sonar, Lower Helm
- I70s Multifunction Instrument Display - Lower Helm
- P70Rs Raymarine Autopilot Control Head - Lower Helm
- 3D Transducer
- Raymarine T70427, AXIOM XL 16 - 15.6" Glass Bridge Multifunction Display with RCR-SD/USB & Honk - Fly,
- FLIR M232 Pan and Tilt Marine Thermal Camera,
- P70Rs Raymarine Autopilot Control Head - Upper Helm
- Raymarine i40 Depth Display - Upper Helm
- Security Camera - Cockpit
- Security Camera - lower Helm
- Camera - Engine Room and Aft Deck

## Bilge System

- 3 electric pumps 24V - 2 237 l/min and N.1 135 l/min
- N. 2 manual emergency pump. 49 l/min
- 3 level alarms
- Bilgewater discharge through engines.

## Fire-Fighting System

- Controls in cockpit and emergency button
- N. 2 12 kg powder cylinder.

## Fuel System

- Two connected aluminum tanks in stainless steel, 1170 l capacity each (total capacity 2340 liters)
- Electronic fuel gauge in main helm station (Port tank)
- Optical fuel gauge indicator on the right tank
- 2 single Filters (decanter) for the engines + 1 filter for the generator
- 2 filler intakes on the walkways
- 2 air escapes.

## Fresh Water System

- 1 590 liter polyethylene tank under the stairs down to the cabins, corridor. With retainer frame in aluminum and GRP cradle
- Water filler on the right walkway
- Level sensor with an electronic gauge in the helm station
- Tank breather on the bulkhead
- Water pressure pump with silent blocks (45 l/min ) in the engine room
- Water heater
- Hot/cold water line: head compartments, galley, bathing platform shower
- Coldwater line only; fly-bridge sink, cold water only in the engine room
- Freshwater WC washing.

## Black Water System

- 1 225 l polyethylene tank under the VIP cabin (stern tank)
- Level sensor with 2 levels
- Tank breather in the bulkhead with anti-odor filter
- 1 FEIT PVM 0.2 macerator pump
- Extraction from the side deck
- Tecma WC (with macerator pump)

## Gray Water System

- 1 225-liter polyethylene tank under the corridor to cabin compartments (main tank)
- Outboard grey water discharges from bulkhead manifold
- Level sensor with 2 levels and alarm indicator in the helm station
- Water discharge from the tank (automatic/manual)
- Greywater discharge pump
- Fan-coil condensation discharge into the grey water tank.

## Sea Water System

- Engine cooler system: 2 dynamic seawater intakes with filter and valves
- Generator cooler system: submersed outlet: 1 dynamic seawater intake (1") with filter and valve
- Air conditioning cooler system: submersed outlet: 1 dynamic seawater intake (1") with filter and valve
- Chain washdown: seawater.

## Engine Exhaust

- Submerged by-pass exhaust system
- Stainless steel insulated exhaust pipes
- Engine exhausts with structural ducts in GRP
- Water/smoke separator with side exhaust for generator.

---

## Engine Room

- Access from the cockpit via hatch
- Battery housing: 1 bulkhead case, aft, on the frame above water heater; 1 box in the crew cabin, behind headboard bulkhead
- Soundproof insulation.

## Ventilation

- **Master head compartment:**
- 24V forced extraction fan
- Natural vent in VIP/ guest head
- Galley: extractor fan
- **Engine Room**
- Air intakes in the hull (grids + separator filters)
- Engine room ventilation/forced air: two fans
- Force extraction: two fans

## Hydraulic System

- BCS hydraulic power steering system
- Bennett Trim tabs
- Raymarine autopilot
- Opacmare control unit hydraulic circuit.

## Audio and Video

- FUSION 010-01905-00, MS-RA770-Apollo Series Touch Screen DSP with Apple AirPlay, AM/FM/Bluetooth/ANT/USB,4X70W
- 32" Samsung TV plus Sonos Bar - Master Stateroom
- Vision TV - Starboard Stateroom
- 32" Samsung TV plus Sonos Bar - VIP stateroom
- Four 8' JL Speakers plus a 12" Subwoofer - Fly Bridge & Cockpit
- Two Bullet JL Speakers - Bow
- Complete AV package
- HD Satellite Television in all 3 staterooms and salon

---

## Исключения

При продаже яхты исключаются личные вещи владельца.

---

## Отказ от ответственности

Компания предоставляет описание судна или яхты добросовестно, но не может

гарантировать точность этой информации, а также не ручается за техническое состояние. Покупатель должен проинструктировать своих агентов или оценщиков исследовать представленную информацию более подробно, по собственному желанию. Продажа судна или яхты, изменение цены или снятие с продажи будет происходить без предварительного уведомления.

# ФОТОГРАФИИ





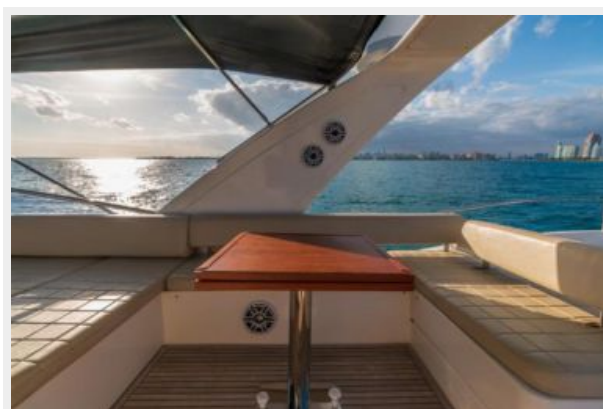












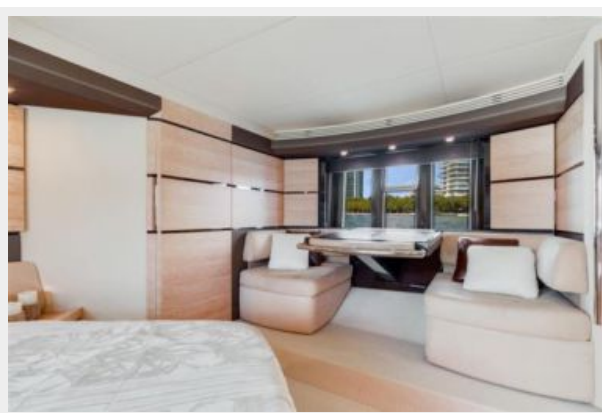


































# КОНТАКТЫ

---

Андрей Шестаков (Andrey Shestakov) – ведущий яхтенный брокер отдела продаж яхт и судов компании Shestakov Yacht Sales Inc. Официальный представитель Shestakov Yacht Sales Inc. для русскоговорящих клиентов в центральном офисе компании в Майами/Форт Лодердейл/Флорида/США.

## Контактная информация

---

Email: [andrey@shestakovyachtsales.com](mailto:andrey@shestakovyachtsales.com)

Web: [shestakovyachtsales.com](http://shestakovyachtsales.com)

## Телефоны

---

Краснодарский край: **+7(918)465-66-44**

США, Майами, Флорида: **+1(954)274-4435**

## Время работы

---

Понедельник – Суббота: **9:00 - 21:00**  
EDT

Воскресенье: **Закрыто**

## Адрес

---



Harbour Towne Marina, 850 NE 3rd St,  
STE 213, Dania, FL 33004