

OUR TRADE — MERIDIAN



Builder: MERIDIAN

LOA: 45' 8" (13.92m)

Year Built: 2008

Beam: 14' 4" (4.37m)

Model: Motor Yacht

Min Draft: 3' 8" (1.12m)

Price: PRICE ON APPLICATION

Location: Canada

Our experienced yacht broker, Andrey Shestakov, will help you choose and buy a yacht that best suits your needs **Our Trade — MERIDIAN** from our catalogue. Presently, at Shestakov Yacht Sales Inc., we have a wide variety of yachts available on our sale's list. We also work in close contact with all the big yacht manufacturers from all over the world.

If you would like to buy a yacht **Our Trade — MERIDIAN** or would like help answering any questions concerning purchasing, selling or chartering a yacht, please call **+1(954)274-4435**

TABLE OF CONTENTS

TABLE OF CONTENTS	2
SPECIFICATIONS	4
Overview	4
Basic Information	5
Dimensions	5
Speed, Capacities and Weight	5
Accommodations	5
Hull and Deck Information	5
Engine Information	6
DETAILED INFORMATION	7
Click here...	7
Exclusions	10
Disclaimer	10
PHOTOS	11
Image 3	11
Image 2	11
Image 4	11
Image 5	11
Image 6	12
Image 7	12
large_2794541	12
large_2794542	12
large_2794556	13
large_2794044	13
large_2794563	13
large_2794562	13
large_2794564	14
large_2794566	14

large_2794567	14
large_2794568	14
large_2794569	14
large_2794570	14
large_2794571	15
large_2794572	15
large_2794574	15
large_2794594	15
Image 8	16
Image 9	16
Image 10	16
Image 11	16
Image 12	17
Image 13	17
Image 15	17
Image 14	17
Image 16	18
large_2794603	18
CONTACTS	19
Contact details	19
Telephones	19
Office hours	19
Address	19

SPECIFICATIONS

Overview

This **FRESHWATER** 2008 Meridian 459 Motor Yacht is a unique opportunity to own a 459 Meridian with Low Hours and that has been *extremely well maintained*. She is ready to go and is in *outstanding mechanical and cosmetic shape*.

Recent upgrades and services include: Yacht controller up to 700' with double processor, New Garmin electronics 2019 touch screen with autopilot, 2020 batteries 6 volts, New 60 amps battery charger, New 65 Mantus anchor, New canvas, Brand New steering wheel, New adjustable sunpads in the front, Seadeck on all 3 exterior floors, All tables changed for mahogany wood, Electrical easy lift for dinghy or SeaDoo up to 1500 pounds with remote control, 6 underwater lights of 80000 watts, Interior and exterior sound system upgraded, All new upgraded blinds, Interior stairs carpet replaced with wood and Alcantara finish, Custom massage chair with 19 functions, 4 TV with satellite (Bell or Direct TV).

This beautiful 459 Cockpit Motor Yacht is one of the Meridians' most popular and truly versatile yachts. With an overall length of 47'7" and a 14' 4" beam, she has plenty of room for extended trips or as a live-aboard. The expansive interior includes a full-beam master stateroom and a bright & extremely spacious salon. The two staterooms are located at opposite ends of the boat giving you and your guests plenty of privacy. The large flybridge and hardtop over the aft patio give you plenty of protection from the elements and is great for entertaining. Tiered interior salon windows provide near 360-degree visibility in the expansive salon and the built-in entertainment center aft includes a newer flat-screen TV. The functional galley is down a couple of steps from the salon and offers excellent storage throughout. The Master Aft stateroom features head and shower compartments that are separated and the bed is positioned athwartships—to save space. A sliding glass door provides direct access to the large aft cockpit. This sliding glass door from the master to the cockpit may very well be her best feature, offering her owners their own private Balcony.

Topside, a wet bar, and ample seating is plentiful on the aft deck and bridge. The bridge is arranged with guest seating aft of the centerline helm. This vessel does not look her age and has had many tasteful upgrades. This boat is absolutely TURN KEY. This is a must-see if you are looking for a super clean, low hour extremely well-maintained motor yacht. She is priced to sell! Call for your showing today!

Basic Information

Category: Motor Yacht

Sub Category: Flybridge

Model Year: 2008

Year Built: 2008

Country: Canada

Vessel Top: Bimini Top

Fly Bridge: Yes

Dimensions

LOA: 45' 8" (13.92m)

Beam: 14' 4" (4.37m)

Min Draft: 3' 8" (1.12m)

Speed, Capacities and Weight

Water Capacity: 90 Gallons

Holding Tank: 55 Gallons

Fuel Capacity: 330 Gallons

Accommodations

Total Cabins: 2

Sleeps: 4

Total Heads: 2

Hull and Deck Information

Hull Material: Fiberglass

Engine Information

Engines: 2

Manufacturer: Cummins

Model: QSB 5.9 M Marine Diesel 425 HP
Drive by Wire

DETAILED INFORMATION

Click here...

Exterior / Interior Color Canvas

- White Gelcoat w/ Brand New Black Canvas and Eisenglass (11/19)
- All of the Eisenglass enclosures & curtains were just replaced & are clear and new.
- Interior Color: Custom - beautiful cherry wood w/ darker taupe furniture

Salon

- Cherrywood Interior
- Carpeting Throughout with Protective Runner
- Recliner Sofa (Port)
- L-Shaped Dinette with Hi-Lo Table and Storage Below
- Designer Blinds
- Samsung Flat Screen TV
- Camera System
- Entertainment system
- Air Conditioning Throughout
- Ample Storage Throughout
- Splendide Washer/Dryer
- Central Vacuum
- Updated Stereo with Speakers Throughout
- Recessed Lighting
- Updated 32" Flat screen TV

Galley

- Cherry wood Cabinetry
- Corian Counters Throughout
- Amtico Sole
- Origo Triple Burner Electric Stove
- Tappan Microwave
- Norcold Refrigerator/Freezer
- Stainless Steel Molded Sink
- Access Hatch
- Large Pantry

Master Stateroom

- Queen Size Island Berth with Storage Below
- Mattress
- En-suite Enclosed Head

- En-suite Enclosed Stall Shower
- Samsung Flat Screen TV
- Cockpit Access
- Sink with Mirrored Vanity
- Air Conditioning Throughout
- Ample Storage
- Dual Hanging Lockers
- Newer Fusion Stereo
- 27" Flatscreen TV

Forward Stateroom

- Queen Size Island Berth with Storage Below
- En-suite Head Access
- Sole 19" Flat Screen TV
- Cedar Hanging Locker
- Air Conditioning
- Ample Storage
- 19" Flatscreen TV

Forward Head

- VacuFlush Head
- Separate Stall Shower
- Mirrored Vanity

Helm Deck

- L-Shaped Settee with Storage Below
- Custom Eisenglass Enclosure
- Norcold Refrigerator
- Custom Swivel Captains Seat
- Companion Seat

Electronics

- Garmin GPSMAP 7610xsv 10" Touch Multi-Function Display (w/ Built-In Sounder)
- Garmin VHF300 Black Box VHF Radio w/ DSC Capabilities and AIS Receive Only
- Digital 529-VW 8' VHF Antenna w/ Cabling
- Garmin Bronze Thru-Hull Depth Transducer w/ Extension Cabling
- Garmin GPS19x GPS/WAAS Antenna
- Garmin GMR24xHD 24" 4kW Radar Dome Antenna w/ Cabling
- Garmin GHP Reactor Hydraulic Autopilot w/ GHC20 Control Head & Smart Pump
- Garmin GRF10 Rudder Reference Unit w/ Extension Cabling
- Garmin CCU & GRF10 Extension Cabling & Hydraulic Shutoff Value Kit, Hoses, Fittings
- Garmin GMI20 Multi-Function Instrument (Data Repeater)

- Garmin Rear Camera
- Northstar Depth Gauge

Electrical System

- Onan 11.5kW Genset with Soundshield
- Cablemaster
- Inverter
- Hot Water Heater
- Battery Charger
- Splendide Washer/Dryer
- Camera System
- SeaVac Central Vacuum

Engine and Mechanical Details

- Cummins QSB 425 HP
- Sidepower Remote Control System
- Sidepower Bow and Stern Thrusters
- Reverso Oil Change System

Engine and Bottom

- Cummins QSB 380 electronic - **fly by wire** electronic shifters
- Engines and Generator fully serviced. (12/19)
- Brand NEW Heat Exchangers (12/19)
- Full bottom job completed (12/19). Professional diver cleans bottom regularly

Aft Deck

- Settee with Storage Below
- Movable 40" Flat Screen TV
- Wet Bar
- U-Line Ice Maker
- Corian Counter Top
- Screened Entrance to Salon –Slider Door
- Large Swim Platform

Decks

- Transom Door
- Transom Shower (H & C)
- Transom Storage Locker
- Large Cockpit Cooler
- Fender Storage Lockers (2)
- Fresh and Salt Water Wash downs
- Molded Steps

- Full Custom Enclosure
- Sun Pad
- Sun Screen

Exclusions

Owner's personal belongings.

Disclaimer

The Company offers the details of this vessel or yacht in good faith but cannot guarantee or warrant the accuracy of this information nor warrant the condition of the vessel. A buyer should instruct his representatives, agents, or his surveyors, to investigate such details as the buyer desires validated. This vessel or yacht is offered subject to prior sale, price change, or withdrawal without notice.

PHOTOS

Image 2



Image 3



Image 4



Image 5



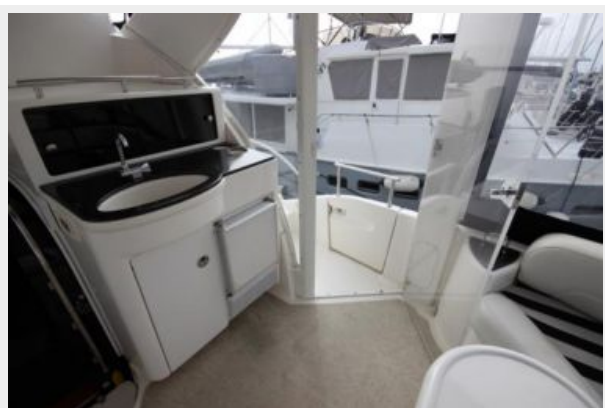
Image 6



Image 7



large_2794541



large_2794542



large_2794556



large_2794044



large_2794563



large_2794562



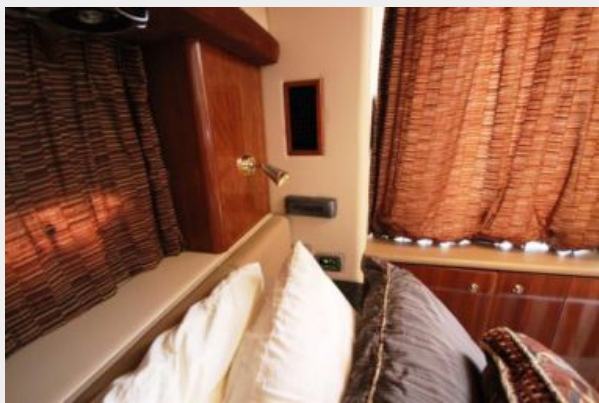
large_2794564



large_2794566



large_2794567



large_2794568



large_2794569



large_2794570



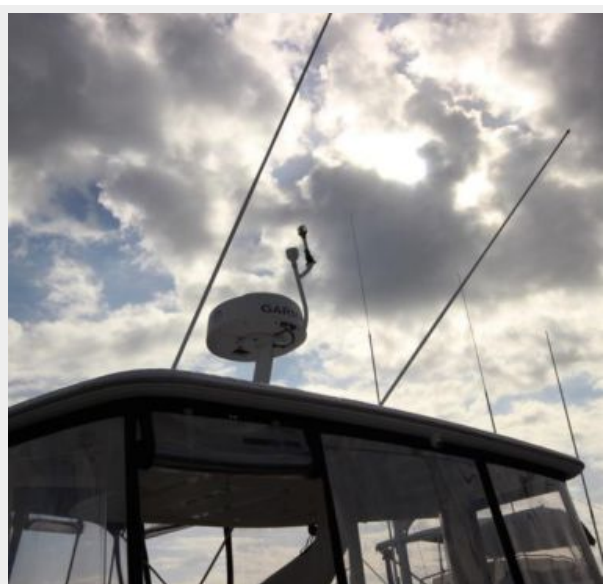
large_2794571



large_2794572



large_2794574



large_2794594



Image 8

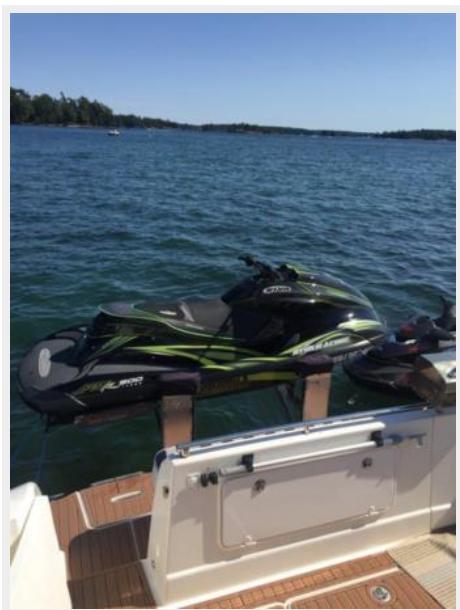


Image 9



Image 10



Image 11



Image 12



Image 13



Image 15

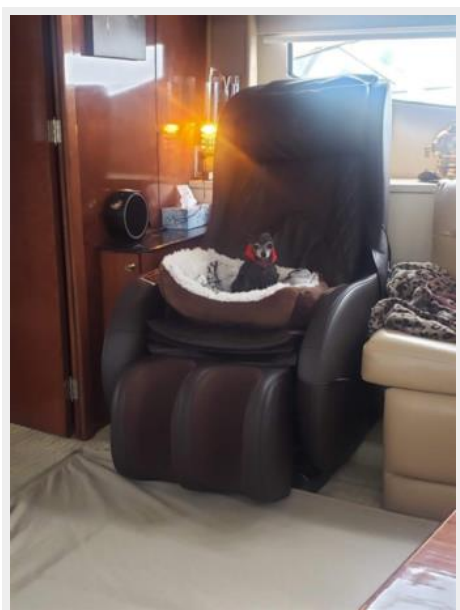


Image 14



Image 16



large_2794603



CONTACTS

Andrey Shestakov, leading yacht broker of the sales department of Shestakov Yacht Sales Inc. Shestakov Yacht Sales Inc., the official representative of the Miami/Fort Lauderdale FL headquarters.

Contact details

Email:
andrey@shestakovyachtsales.com

Web: shestakovyachtsales.com/en/

Telephones

USA: **+1(954)274-4435**

Office hours

Monday – Saturday: **9:00 - 21:00 EDT**

Sunday: **closed**

Address



Harbour Towne Marina, 850 NE 3rd St,
STE 213, Dania, FL 33004