

EMERALD SUNSET — ISLAND PACKET YACHTS



Судостроитель:

ISLAND PACKET YACHTS

Год постройки: 1994

Модель: Крейсерская яхта

Цена: ЦЕНА ЯХТЫ ПО ЗАПРОСУ

Местонахождение: United States

Длина общая: 35' 0" (10.67m)

Ширина: 15' 0" (4.57m)

Макс. осадка: 2' 6" (0.76m)

Купить Emerald Sunset — ISLAND PACKET YACHTS а также выбрать подходящую вам яхту из нашего каталога яхт вам поможет опытный яхтенный брокер Андрей Шестаков. На сегодняшний день компания Shestakov Yacht Sales Inc. имеет большое количество яхт в собственном списке продаж, а также тесно сотрудничает со всеми крупными яхтенными производителями по всему миру. Для того чтобы купить яхту Emerald Sunset — ISLAND PACKET YACHTS а также проконсультироваться по любому вопросу связанному с покупкой, продажей, чартером яхт позвоните по телефону **+7(918)465-66-44**.

ОГЛАВЛЕНИЕ

ОГЛАВЛЕНИЕ	2
ХАРАКТЕРИСТИКИ	4
Обзор	4
Основная информация	4
Размеры	4
Скорость, вместимость и масса	4
Размещение	5
Корпус и палуба	5
Информация о двигателе	5
ПОДРОБНОЕ ОПИСАНИЕ	6
Overview	6
Исключения	11
Отказ от ответственности	11
ФОТОГРАФИИ	12
1	12
3	12
4	12
5	12
6	12
7	12
8	13
9	13
10	13
11	13
12	13
13	13
14	14
15	14

16	14
17	14
18	15
19	15
20	15
21	15
22	15
23	15
24	16
25	16
26	16
КОНТАКТЫ	17
Контактная информация	17
Телефоны	17
Время работы	17
Адрес	17

ХАРАКТЕРИСТИКИ

Обзор

Emerald Sunset A uniquely improved and customized Packet Cat with HARD TOP! Take her to Florida or the Bahamas this year and have the time of your life. She's an excellent platform for just plain fun! Shallow draft, twin diesels, enclosed cockpit for entertaining, huge deck, storage for dive tanks and a place to hang your hammock! This boat is made for fun and adventure! This design, noted for being a true cruising catamaran, has many desirable features such as a 2.5 ft draft, solid foredeck, twin stout keels that protect the props driven by twin Yanmar diesels, and a wonderful, huge, livable cockpit. Making a cockpit livable in all conditions has always been a challenge. Designed by both a naval architect and an engineer, this hard top integrates structural aluminum framing. The stern portion of the frame provides a platform for a 320 watt Solar Panel and the dinghy davits. This hard top design is absolutely the best on the market. It allows a fully climatized additional area, thanks to the addition of a 6.5 KW generator and air conditioning. The utility of this design is appreciated when boarding the boat in the rain or at night. Many upgrades and unique features! Find the in the full listing! This is a Packet Cat you don't want to miss!!!

Основная информация

Тип судна: Крейсерская яхта

Модельный год: 1994

Год постройки: 1994

Страна: United States

Размеры

Длина общая: 35' 0" (10.67m)

Длина по ватерлинии: 31' 0" (9.45m)

Ширина: 15' 0" (4.57m)

Макс. осадка: 2' 6" (0.76m)

Трапы: 50' 0" (15.24m)

Скорость, вместимость и масса

Водоизмещение: 12500 Pounds

Вместимость воды: 140 Gallons

Вместимость сточного бака: 30 Gallons

Объем топливного бака: 55 Gallons

Размещение

Всего кают: 3

Всего коек: 3

Всего ком. состава: 2

Корпус и палуба

Материал корпуса: Fiberglass

Информация о двигателе

Двигатели: 2

Производитель: Yanmar

Модель: 3GM30F

Тип двигателя: Inboard

Тип топлива: Diesel

ПОДРОБНОЕ ОПИСАНИЕ

Overview

Accommodations

Emerald Sunset is a three cabin cruiser with master and guest cabin berths with in-cabin heads. She is equipped with A/C, generator, hardtop enclosing aft deck, and all of the comforts of a high end cruiser. Convenient and well laid out cabin spaces containing lots of storage lockers, drawers, nooks and crannies. Access to the stand up engine rooms is provided through the shower or from the cockpit, which allows full view of the engines if necessary. The salon area has a settee and a fold away dinette. Interior hatches have snap-in screens.

- Light, bright salon area with "L" shaped settee which converts to a double bed.
- New upholstery and pillows in salon
- Two separate sleeping cabins, each with their own private head with separate stall shower. The two staterooms are identical and are accessed from the salon on port and starboard sides. They occupy the two hulls and the space allows for ample storage and hanging lockers.
- Memory foam mattresses topper
- Reverse Cycle Heat and Air
- New LED lighting throughout
- New "Mood" LED rope lighting in saloon

Galley

The galley area is located to starboard as you enter the cabin area providing easy on deck access for food and refreshments. There is a two burner gas range/oven by Seaward and a large freezer/refrigerator combo.

- Two burner gas range with oven
- Microwave Oven
- Freezer/ refrigerator
- Large dry hold

- Designated dish and cutlery storage
- Single bowl stainless steel sink

Sails, Rigging, Canvas & Covers

This vessel is sloop rigging and features a jib sail with Harken Roller furling, solid Vang and in-boom main sail roller furling as well. The traveler is mounted on the hard top with hatches over mainsheet winches. The winches included are two #46 and two #30 Lewmar brand.

- Complete prep, prime and Awlgrip paint mast and boom
- Mast step painted
- New spreader boots
- Mast steps painted
- New custom blue LED deck spreader lights (2) for deck lighting
- New lighting from spreaders to masthead
- Lightning dissipator at mast head
- Lighting on wind indicator at mast head
- Battened Mainsail with in-boom furling (reconditioned 2020)
- New linen sunbrella sacrificial on main
- New custom black and linen striped sunbrella main sail cover with locking clips
- New main sail sheets
- New head sail sheets
- Boom Vang
- Harken Traveler located on Hard Top
- Furling Genoa
- New halyards installed
- Complete Nav Station sunbrella cover for helm and electronics with zipper
- New nav seat cushion, arm rest pad and vinyl seat base updated
- New sunbrella winch covers
- Seat cushions with all new high density foam with custom made pillows
- New sunbrella on front deck seat and back rest cushions
- New sunbrella linen davit cover for protection on swim platform and dinghy
- Custom whisker pole painted awlgrip white for mast

Hull and Deck

The custom hardtop is the most amazing addition to this Packet Cat. With the enclosures down,

this space becomes an additional room on even the stormiest or coldest days. Features of the hard top follow:

- Advanced composite and aluminum construction (Hard top exceeds ABS (American Bureau of Shipping) Design Standards)
- Main Sheet Traveler mounted on top
- Full weather proof enclosure with additional, built in screens (screens and snaps were upgraded this year)
- Davits
- Canvas covering aft of rigid hard top provides protection from elements while boarding
- Dimmable red/white LED lighting
- Sunroof over helm station
- Remote stations for both the stereo and VHF
- Bose Stereo Speakers
- New Cockpit Cushions and Helmsman's Seat (2020)
- NEW Textaline cover for saloon wrap around window

The Deck of the Packet Cat is easy to navigate thanks to wide walk ways, solid stainless steel rails the entire length of the boat and a rigid forward deck. Additional features follow:

- Large centerline lazarette under sun pad (in Delta Pod)
- Fender/storage lockers port and starboard at bow
- Electric Windlass 35# Delta with 150' chain
- New rode and chain with back up anchor
- Tricolor anchor light
- 35' Bridle for anchor chain
- Mantus snubber with 35' of line
- Port and Starboard steps leading to swim platform
- Swim Ladder
- Large lockers for diving tanks or other gear accessible from the swim platform
- Cockpit Shower
- Pulley system on the wet-decks between the hulls that allows in water dinghy storage

Hull Note:

- Entire bottom sanded with 3 coats of anti fouling black paint applied to entire hull below

boot stripe

- All new awl grip tan color on boot stripes, port. hole inset trim line and stern stripe (2 coats)
- All new marine grade black pin striping installed
- Hull waxed and compounded 2020
- Salt Away treatment 2019
- Prop Paint 2020
- All 12 port holes rewedded and sealed before awl gripped

Electronics, Audio and Entertainment

- B&G Zeus 3 Multifunction Display With Insight Charts ~ Chartplotter/Navigation system
- Custom platform under radar mount for Golight spot light and hand held control
- Forward seeing sonar with new thru hull transducer with temperature reading
- Raymarine Autopilot with Smart Pilot X10 Controller
- S100 Wireless Remote
- Raymarine i50 Tridata display
- Garmin GPS Map 545 S GPS/Chart Plotter with sonar fish/depth finder
- XM Radio and Satellite Weather linked to Raymarine
- Omni Directional TV antenna and with SS mount and 12V booster at masthead
- Garmin AIS600 Transceiver
- Compass (Ritchie)
- Standard Horizon GX2000 VHF with remote station at helm
- FUSHION MS-RA200 Stereo with Remote Station at Helm (now blue tooth capable)
- Bose Speakers
- Cell Phone Booster
- Wired for Cable TV
- NEW flat screen TV with digital antenna and TV booster

Electrical

- Voltage:12V/110V
- NEW Batteries: (5) Group 31 AGM Batteries and cables
- NEW 12V control panel for all new mast electrical wire run in mast with breakers. Labeled for al new mast lighting and electronics
- Inverter/Charger 3500 Magna MS2812 125 Amp Charge. Pure Sine Wave Inverter 2800 watts/23amp continuous. Re-conditioned for updates in like new condition with digital control panel and battery charger
- Shore Power: (2) 30Amp (Upgraded to Smart Plugs 2011)

- Reverse Cycle Heat and Air (Lunaire with CruiseAir Controls) 12K BTU and 16 BTU (recharge 2014)
- Generator: Fisher Panda 6 (6.5 KW) Rebuilt on top end, new fluids, impeller. Heat exchangers flushed and cleaned with new starter batteries
- NEW Dickerson propane heater/fireplace with blower
- Galvanic Isolator
- 320 Watt solar panel with Morning Star Controller - TriStar MPPT45
- Most interior lights are LED
- Nav light LED
- Fusion audio is now set up for blue tooth
- Cell phone extender
- Wifi booster
- New 12V outlet
- Custom blue uplighting from spreaders
- Tricolor/anchor led light at mast head

Engines, Mechanical & Plumbing

- Starboard engine is Yanmar 3GM30F with 2406 hours: rebuilt in 2009
- New washers in Starboard engine injectors 2014
- Port Engine is Yanmar 3GM30F with 2291 hours: Overhauled in 2009
- New Starter Pt Engine 2014
- New impellers, belts and oil and transmission change to both engines in 2020
- New Shaft Drives in 2009
- New Shaft Logs
- VariProps (2) (Feathering)
- Emergency Tiller
- Manual Bilge Pump
- (2) Rule Electric Bilge Pumps
- Air conditioner re-charge 2014
- Fisher Panda 6.5KW Genset with 314 hours, rebuild on top end, new fluids and impeller, new starter battery. Heat exchanger flushed and cleaned.
- Head pumps rebuilt 2014
- New shaft long bolts 2014
- Extra insulation in the refrigerator
- Corrosion cleaning all water systems and air conditioner
- Both heads rebuilt
- NEW drain hoses installed
- NEW fresh water manifold installed
- NEW galley sink fresh water system
- NEW bilge pump float switches

Исключения

При продаже яхты исключаются личные вещи владельца.

Отказ от ответственности

Компания предоставляет описание судна или яхты добросовестно, но не может гарантировать точность этой информации, а также не ручается за техническое состояние. Покупатель должен проинструктировать своих агентов или оценщиков исследовать представленную информацию более подробно, по собственному желанию. Продажа судна или яхты, изменение цены или снятие с продажи будет происходить без предварительного уведомления.

ФОТОГРАФИИ

1



3



4



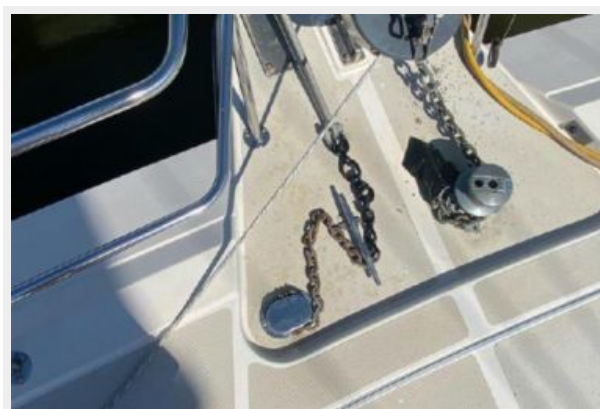
5



6



7



8



9



10



11



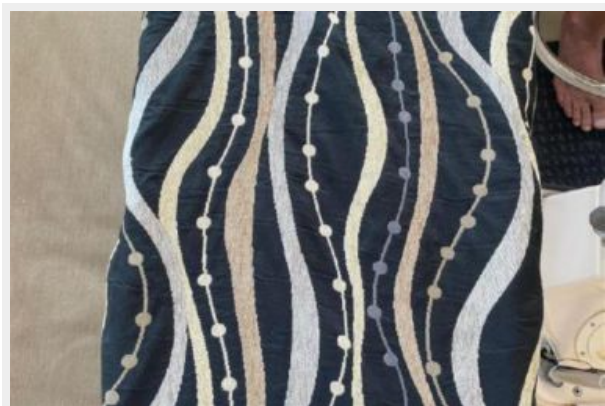
12



13



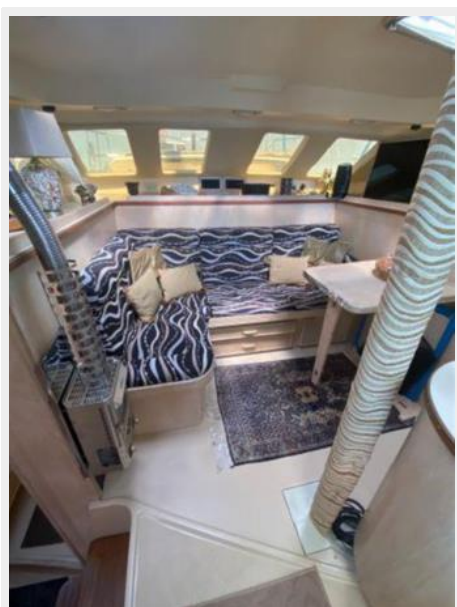
14



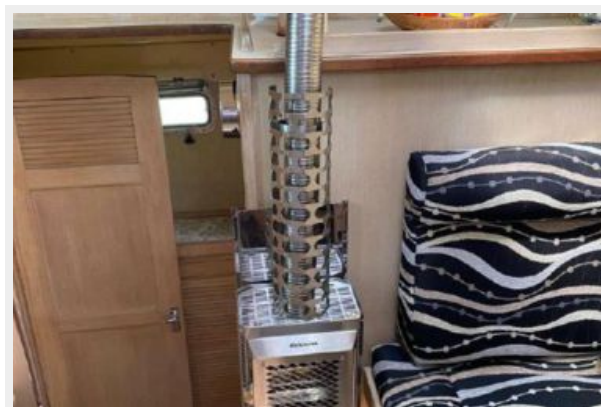
15



16



17



18



19



20



21



22



23



24



25



26



КОНТАКТЫ

Андрей Шестаков (Andrey Shestakov) – ведущий яхтенный брокер отдела продаж яхт и судов компании Shestakov Yacht Sales Inc. Официальный представитель Shestakov Yacht Sales Inc. для русскоговорящих клиентов в центральном офисе компании в Майами/Форт Лодердейл/Флорида/США.

Контактная информация

Email: andrey@shestakovyachtsales.com

Web: shestakovyachtsales.com

Телефоны

Краснодарский край: **+7(918)465-66-44**

США, Майами, Флорида: **+1(954)274-4435**

Время работы

Понедельник – Суббота: **9:00 - 21:00**
EDT

Воскресенье: **Закрето**

Адрес



Harbour Towne Marina, 850 NE 3rd St,
STE 213, Dania, FL 33004