

AQUA — MONTE CARLO YACHTS



Builder: MONTE CARLO YACHTS

Year Built: 2016

Model: Motor Yacht

Price: PRICE ON APPLICATION

Location: United States

LOA: 50' 0" (15.24m)

Beam: 14' 2" (4.32m)

Max Draft: 4' 2" (1.27m)

Cruise Speed: 25 Kts. (29 MPH)

Max Speed: 30 Kts. (35 MPH)

Our experienced yacht broker, Andrey Shestakov, will help you choose and buy a yacht that best suits your needs **AQUA — MONTE CARLO YACHTS** from our catalogue. Presently, at Shestakov Yacht Sales Inc., we have a wide variety of yachts available on our sale's list. We also work in close contact with all the big yacht manufacturers from all over the world.

If you would like to buy a yacht **AQUA — MONTE CARLO YACHTS** or would like help answering any questions concerning purchasing, selling or chartering a yacht, please call **+1(954)274-4435**

TABLE OF CONTENTS

TABLE OF CONTENTS	2
SPECIFICATIONS	7
Overview	7
Basic Information	7
Dimensions	8
Speed, Capacities and Weight	8
Accommodations	8
Hull and Deck Information	8
Engine Information	8
DETAILED INFORMATION	9
Cockpit/ Swim Platform	9
Galley	9
Salon	9
Helm Stations	10
VIP Stateroom	10
Guest Stateroom	11
Master Stateroom	11
Flybridge	11
Engine Room/ Mechanical	11
Service/ History	12
Exclusions	12
Disclaimer	12
PHOTOS	13
7633381_20201116052635219_1_XLARGE	13
7633381_20201116052639010_1_XLARGE	13
7633381_20201116052641032_1_XLARGE	13
7633381_20201116052647211_1_XLARGE	13
7633381_20201116052650355_1_XLARGE	13

7633381_20201116052655286_1_XLARGE	13
7633381_20201116052658193_1_XLARGE	14
7633381_20201116052701349_1_XLARGE	14
7633381_20201116052707335_1_XLARGE	14
7633381_20201116052712175_1_XLARGE	14
7633381_20201116052718252_1_XLARGE	14
7633381_20201116052722162_1_XLARGE	14
7633381_20201116052726156_1_XLARGE	14
7633381_20201116052735127_1_XLARGE	14
7633381_20201116052738120_1_XLARGE	15
7633381_20201116052817228_1_XLARGE	15
7633381_20201116052824827_1_XLARGE	15
7633381_20201116052850967_1_XLARGE	15
7633381_20201116052901597_1_XLARGE	15
7633381_20201116052908055_1_XLARGE	15
7633381_20201116052922062_1_XLARGE	15
7633381_20201116052934725_1_XLARGE	15
7633381_20201116052956035_1_XLARGE	16
7633381_20201116053041199_1_XLARGE	16
7633381_20201116053052895_1_XLARGE	16
7633381_20201116053113399_1_XLARGE	16
7633381_20201116053123030_1_XLARGE	16
7633381_20201116053139231_1_XLARGE	16
7633381_20201116053149033_1_XLARGE	16
7633381_20201116053158731_1_XLARGE	16
7633381_20201116053215649_1_XLARGE	17
7633381_20201116053227070_1_XLARGE	17
7633381_20201116053236596_1_XLARGE	17
7633381_20201116053247071_1_XLARGE	17

7633381_20201116053259463_1_XLARGE	17
7633381_20201117035901979_1_XLARGE	17
7633381_20201117035911368_1_XLARGE	17
7633381_20201117035921567_1_XLARGE	17
7633381_20201117035929293_1_XLARGE	18
7633381_20201117035936100_1_XLARGE	18
7633381_20201117035943367_1_XLARGE	18
7633381_20201117035952516_1_XLARGE	18
7633381_20201117040000579_1_XLARGE	18
7633381_20201117040009411_1_XLARGE	18
7633381_20201116052945518_1_XLARGE	18
7633381_20201116054333511_1_XLARGE	18
7633381_20201116054348071_1_XLARGE	19
7633381_20201116054402895_1_XLARGE	19
7633381_20201116054413822_1_XLARGE	19
7633381_20201116053336521_1_XLARGE	19
7633381_20201116053350382_1_XLARGE	19
7633381_20201116053401418_1_XLARGE	19
7633381_20201116053410800_1_XLARGE	19
7633381_20201116053424533_1_XLARGE	19
7633381_20201116053436129_1_XLARGE	20
7633381_20201116053447116_1_XLARGE	20
7633381_20201116053459911_1_XLARGE	20
7633381_20201116053509875_1_XLARGE	20
7633381_20201116053541258_1_XLARGE	20
7633381_20201116053555671_1_XLARGE	20
7633381_20201116053608012_1_XLARGE	20
7633381_20201116053620527_1_XLARGE	20
7633381_20201116053634952_1_XLARGE	21

7633381_20201116053642060_1_XLARGE	21
7633381_20201116053655073_1_XLARGE	21
7633381_20201116054241460_1_XLARGE	21
7633381_20201116053736353_1_XLARGE	21
7633381_20201116053753711_1_XLARGE	21
7633381_20201116053813475_1_XLARGE	21
7633381_20201116053825754_1_XLARGE	21
7633381_20201116053839892_1_XLARGE	22
7633381_20201116053903806_1_XLARGE	22
7633381_20201116053918935_1_XLARGE	22
7633381_20201116053931189_1_XLARGE	22
7633381_20201116053941597_1_XLARGE	22
7633381_20201116053954283_1_XLARGE	22
7633381_20201116054017402_1_XLARGE	23
7633381_20201116054005887_1_XLARGE	23
7633381_20201116054043453_1_XLARGE	23
7633381_20201116054031694_1_XLARGE	23
7633381_20201116054141893_1_XLARGE	23
7633381_20201116054154060_1_XLARGE	23
7633381_20201116054207429_1_XLARGE	24
7633381_20201116054231277_1_XLARGE	24
7633381_20201116054217388_1_XLARGE	24
7633381_20201116054126449_1_XLARGE	24
7633381_20201117040538791_1_XLARGE	24
7633381_20201117040549574_1_XLARGE	24
7633381_20201117040558182_1_XLARGE	24
7633381_20201117040607224_1_XLARGE	24
7633381_20201117040615280_1_XLARGE	25
7633381_20201117040623821_1_XLARGE	25

7633381_20201117040636601_1_XLARGE	25
CONTACTS	26
Contact details	26
Telephones	26
Office hours	26
Address	26

SPECIFICATIONS

Overview

2016 Monte Carlo 5

LLC OWNED

Loaded With Tons of Options

- IPS 600 Diesels with Joystick Control - 650 Hours
- Alessandro Marchi Inflatable with Steering Console and 20 HP Mercury - Available
- Equipped with Nearly Every Available Option From the Factory.
- 6 TVs Including the Cockpit and Flybridge - All Have Covers
- 3 Stateroom, 2 Head Layout.
- Summer Galley on the Transom and Flybridge. Both Equipped with Grill, Sink and Prep Area.
- Hydraulic Swim Platform For Tender and Easy Water Access for Diving, Snorkeling Etc.
- Crew Quarters Doubles as Excellent Storage Area.
- Optional Dishwasher (Replaced With Fridge but Available)
- Washer/Dryer Combo Unit.
- KVH HD Satellite Equipped on All 6 TVs. Satellite Domes Custom Painted.
- Full Suite of Simrad Electronics with Added Second Display on the Bridge.
- Upgraded Interior with Beautiful, White Leather Finishes.
- Custom JL Audio Stereo Throughout - 10 Speakers, Dedicated Amp and Batteries
- Clean Engine Room with Easy Access to All Systems.
- LLC Owned Vessel
- Spare Props

Basic Information

Category: Motor Yacht

Model Year: 2016

Year Built: 2016

Country: United States

Dimensions

LOA: 50' 0" (15.24m)

Beam: 14' 2" (4.32m)

Max Draft: 4' 2" (1.27m)

Speed, Capacities and Weight

Cruise Speed: 25 Kts. (29 MPH)

Max Speed: 30 Kts. (35 MPH)

Displacement: 31381 Pounds

Water Capacity: 158 Gallons

Fuel Capacity: 344 Gallons

Accommodations

Total Cabins: 3

Total Heads: 2

Hull and Deck Information

Hull Material: Fiberglass

Engine Information

Engines: 2

Manufacturer: Volvo

Model: IPS 600 - A396685

Engine Type: Inboard

Fuel Type: Diesel

DETAILED INFORMATION

Cockpit/ Swim Platform

- The cockpit is covered in gorgeous teak that continues into the galley and down to the hydraulic swim platform. The platform has a capacity of approximate 750 lbs.
- The Alessandro Marchi Tender with 20 HP Mercury is stored on the hydraulic platform. Tender is Available.
- There is no shortage of seating in the area and the retractable awning allows you to enjoy being outdoors in the shade.
- There is an electric cockpit shade that comes out of the hard top and shades the aft deck seating as well as the grill area.
- The custom JL Audio sound system sounds amazing and includes 10 speakers throughout the cockpit and flybridge with dedicated amps and batteries.
- Just below the cockpit seating you will find access to the crew cabin.
- The side decks are wide and safe with a high bow rail all the way around.

Galley

- As you enter through the solid, 3-piece door from the cockpit the teak sole continues into the spacious galley. The doors open completely to create a very inviting space.
- The galley is finished in brushed oak cabinetry and solid surface countertops.
- She features an Edgestar dishwasher, 2- burner Kenyon cooktop, Danby microwave, Vitrefrigo icemaker/freezer and 2 freezer drawers. NOTE: The dishwasher has been removed and replaced with an additional refrigerator. The dishwasher is in storage and available.
- The galley has tons of storage space including glass and dish ware storage above the refrigeration drawers and a "lazy susan" style shelf system in the corner cabinet.

Salon

- Just forward of the galley you will find the expansive salon with comfortable seating for up to 8 adults.
- The owner chose the best leather material offered by Beneteau for the sofas and accented it nicely with a beautiful hi-lo leather table that opens up to create a dining area for the whole salon.
- On the port and starboard sides you will find electric windows that allow for air flow through the lower helm and salon/galley areas.
- The main doors have the optional retractable screen to enjoy the breeze and avoid the bugs.
- Just behind the starboard love seat there is a 32 inch Samsung flat screen also on a hi-lo

actuator.

- AQUA has a Fusion stereo system throughout allowing the owner to adjust the volume and station independently in each area of the vessel with bluetooth capability and satellite music/weather module.
- A KVH HD Satellite was added to the vessel when new and each of the 6 TVs has its own receiver. The sound quality continues through the salon with the Bose surround sound system.
- The washer/dryer combo unit is conveniently located below the steps that lead down to the cabins.

Helm Stations

- The lower helm seats 2 comfortably and gives great visibility nearly 365 degrees around. The single-piece windscreen is the main contributing factor to the great visibility.
- AQUA is equipped with IPS 600s and the desirable Joystick which is located just behind the electronic throttle controls.
- The boat is optioned with separate third joystick control in cockpit.
- She is equipped with a full suite of Simrad electronics including two 12 inch touch screen displays at the lower helm and a 12 inch and 9 inch on the upper helm. The plotter, radar, autopilot and forward facing sonar are all integrated into the displays. Just below is the handheld Simrad VHF.
- Just below the Simrad screens is the LCD Volvo display which gives a full readout of all engine data with additional analog gauges and rudder indicator above.
- To starboard on the helm is the optional Quick bow thruster control and Quick chain counter.
- The Lenco trim tab control is just aft of the chain counter.

VIP Stateroom

- As you make your way down the centerline companionway the beautiful brushed oak and plush white carpet continue into the 3 staterooms.
- The VIP is forward and allows for tons of natural light with the 4 port holes and skylight/opening hatch above (both have retractable screens and shades).
- There is no shortage of storage in the VIP with a large hanging locker to port and shelved storage locker to starboard. There are also large storage cabinets above the port holes on the port and starboard sides.
- The island queen berth has custom bedding and decorative pillows.
- A Samsung flat screen hangs on the aft bulkhead and has an independent HD satellite box. The thermostat and Fusion stereo head unit are easily accessible next to the starboard locker.
- The VIP has private access to 1 of 2 heads which features a nice basin sink, teak sole and stall shower.

Guest Stateroom

- The guest stateroom is located to starboard and also has nice natural light with 2 opening port holes and over/under bunks.
- Just aft of the bunks is a nice size hanging locker with Samsung flatscreen and Fusion stereo control above.
- Bose speakers throughout.

Master Stateroom

- The master stateroom is one of the most impressive areas of AQUA. The waterline windows, both outfitted with opening port holes, lend to tons of natural light and beautiful views.
- The island queen is covered in custom bedding and decorative pillows. To either side of the berth are leather capped night stands and reading lights.
- Outboard of the berth are 2 large sofa/seating areas with storage below.
- There is ample storage throughout including 2 large hanging lockers.
- The en suite head has an impressive separate stall shower with a teak bench and seat.
- There is a beautiful, white basin sink and an opening port hole that allows fresh air into the space.

Flybridge

- Known for the size, the MC5 flybridge is exemplary of one you would find on a much larger vessel. She boasts a seating area for up to 10 guests and a beautiful teak table that expands for dining.
- The sun pad converts to a bench seating area and makes a great forward-facing space to keep the captain company.
- Just aft of the helm is a summer galley with a second grill and freshwater sink. Below there is additional storage and a trash receptacle. Next to the aft sofa is yet another refrigeration box with thermostat.
- The flybridge TV is mounted aft and has a cover to protect it when not in use.
- An additional, stand-alone freezer was also added to the flybridge.
- The flybridge looks down over the bow sun pads and additional speakers.
- The KVH satellite domes are custom painted to match the cream gel coat on the top sides.

Engine Room/ Mechanical

- IPS 600s - 435 HP - 650 Hours
- Port Serial: A396685
- Starboard Serial: A396686

- 13.5 kW Onan generator. Serial: J140756748
- CruiseAir chilled water AC system.
- 2 50 Amp shore chords both on Glindenning reels.
- 2 Dolphin Pro OEM 24.4 battery chargers.

Service/ History

- Engine Service - July 2020
- IPS Service - August 2020
- Generator Service - August 2020

Exclusions

Owner's personal belongings.

Disclaimer

The Company offers the details of this vessel or yacht in good faith but cannot guarantee or warrant the accuracy of this information nor warrant the condition of the vessel. A buyer should instruct his representatives, agents, or his surveyors, to investigate such details as the buyer desires validated. This vessel or yacht is offered subject to prior sale, price change, or withdrawal without notice.

PHOTOS

7633381_20201116052635219_1_XLARGE



7633381_20201116052639010_1_XLARGE



7633381_20201116052641032_1_XLARGE



7633381_20201116052647211_1_XLARGE



7633381_20201116052650355_1_XLARGE



7633381_20201116052655286_1_XLARGE



7633381_20201116052658193_1_XLARGE



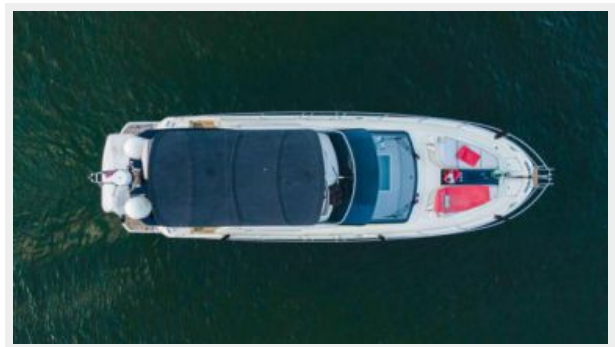
7633381_20201116052701349_1_XLARGE



7633381_20201116052707335_1_XLARGE



7633381_20201116052712175_1_XLARGE



7633381_20201116052718252_1_XLARGE



7633381_20201116052722162_1_XLARGE



7633381_20201116052726156_1_XLARGE



7633381_20201116052735127_1_XLARGE



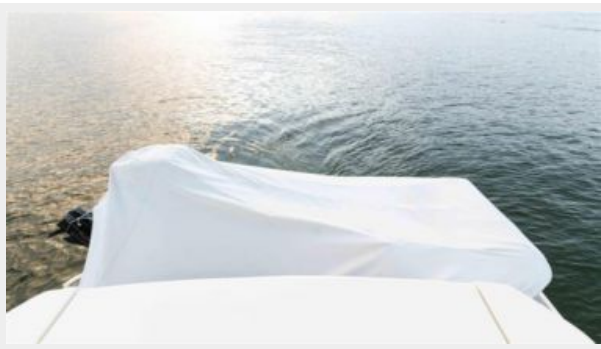
7633381_20201116052738120_1_XLARGE



7633381_20201116052817228_1_XLARGE



7633381_20201116052824827_1_XLARGE



7633381_20201116052850967_1_XLARGE



7633381_20201116052901597_1_XLARGE



7633381_20201116052908055_1_XLARGE



7633381_20201116052922062_1_XLARGE



7633381_20201116052934725_1_XLARGE



7633381_20201116052956035_1_XLARGE



7633381_20201116053041199_1_XLARGE



7633381_20201116053052895_1_XLARGE



7633381_20201116053113399_1_XLARGE



7633381_20201116053123030_1_XLARGE



7633381_20201116053139231_1_XLARGE



7633381_20201116053149033_1_XLARGE



7633381_20201116053158731_1_XLARGE



7633381_20201116053215649_1_XLARGE



7633381_20201116053227070_1_XLARGE



7633381_20201116053236596_1_XLARGE



7633381_20201116053247071_1_XLARGE



7633381_20201116053259463_1_XLARGE



7633381_20201117035901979_1_XLARGE



7633381_20201117035911368_1_XLARGE



7633381_20201117035921567_1_XLARGE



7633381_20201117035929293_1_XLARGE



7633381_20201117035936100_1_XLARGE



7633381_20201117035943367_1_XLARGE



7633381_20201117035952516_1_XLARGE



7633381_20201117040000579_1_XLARGE



7633381_20201117040009411_1_XLARGE



7633381_20201116052945518_1_XLARGE



7633381_20201116054333511_1_XLARGE



7633381_20201116054348071_1_XLARGE



7633381_20201116054402895_1_XLARGE



7633381_20201116054413822_1_XLARGE



7633381_20201116053336521_1_XLARGE



7633381_20201116053350382_1_XLARGE



7633381_20201116053401418_1_XLARGE



7633381_20201116053410800_1_XLARGE



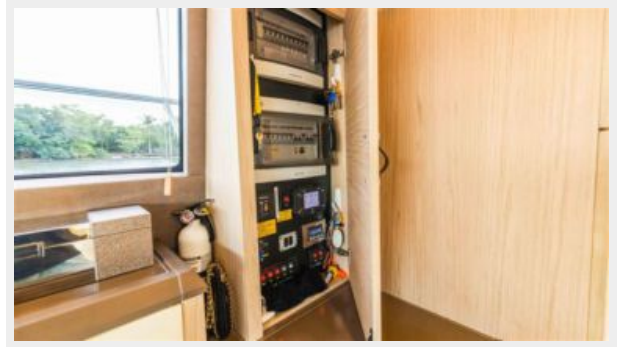
7633381_20201116053424533_1_XLARGE



7633381_20201116053436129_1_XLARGE



7633381_20201116053447116_1_XLARGE



7633381_20201116053459911_1_XLARGE



7633381_20201116053509875_1_XLARGE



7633381_20201116053541258_1_XLARGE



7633381_20201116053555671_1_XLARGE



7633381_20201116053608012_1_XLARGE



7633381_20201116053620527_1_XLARGE



7633381_20201116053634952_1_XLARGE



7633381_20201116053642060_1_XLARGE



7633381_20201116053655073_1_XLARGE



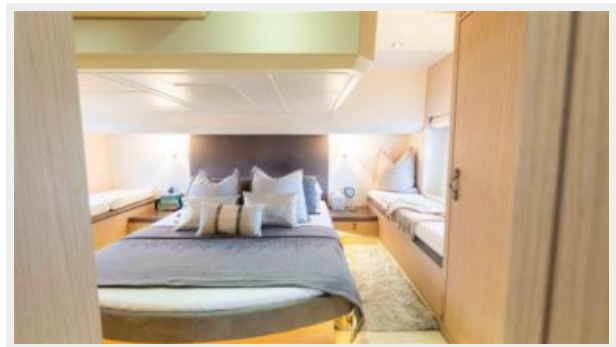
7633381_20201116054241460_1_XLARGE



7633381_20201116053736353_1_XLARGE



7633381_20201116053753711_1_XLARGE



7633381_20201116053813475_1_XLARGE



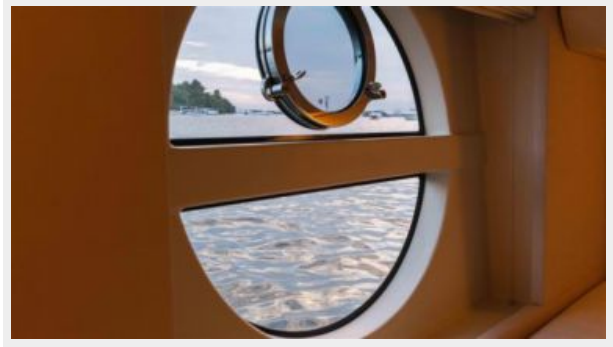
7633381_20201116053825754_1_XLARGE



7633381_20201116053839892_1_XLARGE



7633381_20201116053903806_1_XLARGE



7633381_20201116053918935_1_XLARGE



7633381_20201116053931189_1_XLARGE



7633381_20201116053941597_1_XLARGE



7633381_20201116053954283_1_XLARGE



7633381_20201116054017402_1_XLARGE



7633381_20201116054005887_1_XLARGE



7633381_20201116054043453_1_XLARGE



7633381_20201116054031694_1_XLARGE



7633381_20201116054141893_1_XLARGE



7633381_20201116054154060_1_XLARGE



7633381_20201116054207429_1_XLARGE



7633381_20201116054231277_1_XLARGE



7633381_20201116054217388_1_XLARGE



7633381_20201116054126449_1_XLARGE



7633381_20201117040538791_1_XLARGE



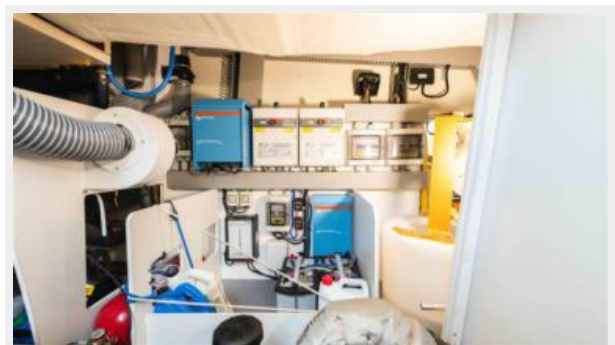
7633381_20201117040549574_1_XLARGE



7633381_20201117040558182_1_XLARGE



7633381_20201117040607224_1_XLARGE



7633381_20201117040615280_1_XLARGE



7633381_20201117040623821_1_XLARGE



7633381_20201117040636601_1_XLARGE



CONTACTS

Andrey Shestakov, leading yacht broker of the sales department of Shestakov Yacht Sales Inc. Shestakov Yacht Sales Inc., the official representative of the Miami/Fort Lauderdale FL headquarters.

Contact details

Email: andrey@shestakovyachtsales.com

Web: shestakovyachtsales.com/en/

Telephones

USA: +1(954)274-4435

Office hours

Monday – Saturday: **9:00 - 21:00** EDT

Sunday: **closed**

Address



Harbour Towne Marina, 850 NE 3rd St,
STE 213, Dania, FL 33004