

## AQUA — MONTE CARLO YACHTS



**Судостроитель:**

MONTE CARLO YACHTS

**Год постройки:** 2016

**Модель:** Моторная яхта

**Цена:** ЦЕНА ЯХТЫ ПО ЗАПРОСУ

**Местонахождение:** United States

**Длина общая:** 50' 0" (15.24m)

**Ширина:** 14' 2" (4.32m)

**Макс. осадка:** 4' 2" (1.27m)

**Крейс. скорость:** 25 Kts. (29 MPH)

**Макс. скорость:** 30 Kts. (35 MPH)

Купить **AQUA — MONTE CARLO YACHTS** а также выбрать подходящую вам яхту из нашего каталога яхт вам поможет опытный яхтенный брокер Андрей Шестаков. На сегодняшний день компания **Shestakov Yacht Sales Inc.** имеет большое количество яхт в собственном списке продаж, а также тесно сотрудничает со всеми крупными яхтенными производителями по всему миру.

Для того чтобы купить яхту **AQUA — MONTE CARLO YACHTS** а также проконсультироваться по любому вопросу связанному с покупкой, продажей, чартером яхт позвоните по телефону **+7(918)465-66-44**.

# ОГЛАВЛЕНИЕ

ОГЛАВЛЕНИЕ	2
ХАРАКТЕРИСТИКИ	7
Обзор	7
Основная информация	7
Размеры	8
Скорость, вместимость и масса	8
Размещение	8
Корпус и палуба	8
Информация о двигателе	8
ПОДРОБНОЕ ОПИСАНИЕ	9
Cockpit/ Swim Platform	9
Galley	9
Salon	9
Helm Stations	10
VIP Stateroom	10
Guest Stateroom	11
Master Stateroom	11
Flybridge	11
Engine Room/ Mechanical	11
Service/ History	12
Исключения	12
Отказ от ответственности	12
ФОТОГРАФИИ	13
7633381_20201116052635219_1_XLARGE	13
7633381_20201116052639010_1_XLARGE	13
7633381_20201116052641032_1_XLARGE	13
7633381_20201116052647211_1_XLARGE	13
7633381_20201116052650355_1_XLARGE	13

7633381_20201116052655286_1_XLARGE	13
7633381_20201116052658193_1_XLARGE	14
7633381_20201116052701349_1_XLARGE	14
7633381_20201116052707335_1_XLARGE	14
7633381_20201116052712175_1_XLARGE	14
7633381_20201116052718252_1_XLARGE	14
7633381_20201116052722162_1_XLARGE	14
7633381_20201116052726156_1_XLARGE	14
7633381_20201116052735127_1_XLARGE	14
7633381_20201116052738120_1_XLARGE	15
7633381_20201116052817228_1_XLARGE	15
7633381_20201116052824827_1_XLARGE	15
7633381_20201116052850967_1_XLARGE	15
7633381_20201116052901597_1_XLARGE	15
7633381_20201116052908055_1_XLARGE	15
7633381_20201116052922062_1_XLARGE	15
7633381_20201116052934725_1_XLARGE	15
7633381_20201116052956035_1_XLARGE	16
7633381_20201116053041199_1_XLARGE	16
7633381_20201116053052895_1_XLARGE	16
7633381_20201116053113399_1_XLARGE	16
7633381_20201116053123030_1_XLARGE	16
7633381_20201116053139231_1_XLARGE	16
7633381_20201116053149033_1_XLARGE	16
7633381_20201116053158731_1_XLARGE	16
7633381_20201116053215649_1_XLARGE	17
7633381_20201116053227070_1_XLARGE	17
7633381_20201116053236596_1_XLARGE	17
7633381_20201116053247071_1_XLARGE	17

7633381_20201116053259463_1_XLARGE	17
7633381_20201117035901979_1_XLARGE	17
7633381_20201117035911368_1_XLARGE	17
7633381_20201117035921567_1_XLARGE	17
7633381_20201117035929293_1_XLARGE	18
7633381_20201117035936100_1_XLARGE	18
7633381_20201117035943367_1_XLARGE	18
7633381_20201117035952516_1_XLARGE	18
7633381_20201117040000579_1_XLARGE	18
7633381_20201117040009411_1_XLARGE	18
7633381_20201116052945518_1_XLARGE	18
7633381_20201116054333511_1_XLARGE	18
7633381_20201116054348071_1_XLARGE	19
7633381_20201116054402895_1_XLARGE	19
7633381_20201116054413822_1_XLARGE	19
7633381_20201116053336521_1_XLARGE	19
7633381_20201116053350382_1_XLARGE	19
7633381_20201116053401418_1_XLARGE	19
7633381_20201116053410800_1_XLARGE	19
7633381_20201116053424533_1_XLARGE	19
7633381_20201116053436129_1_XLARGE	20
7633381_20201116053447116_1_XLARGE	20
7633381_20201116053459911_1_XLARGE	20
7633381_20201116053509875_1_XLARGE	20
7633381_20201116053541258_1_XLARGE	20
7633381_20201116053555671_1_XLARGE	20
7633381_20201116053608012_1_XLARGE	20
7633381_20201116053620527_1_XLARGE	20
7633381_20201116053634952_1_XLARGE	21

---

7633381_20201116053642060_1_XLARGE	21
7633381_20201116053655073_1_XLARGE	21
7633381_20201116054241460_1_XLARGE	21
7633381_20201116053736353_1_XLARGE	21
7633381_20201116053753711_1_XLARGE	21
7633381_20201116053813475_1_XLARGE	21
7633381_20201116053825754_1_XLARGE	21
7633381_20201116053839892_1_XLARGE	22
7633381_20201116053903806_1_XLARGE	22
7633381_20201116053918935_1_XLARGE	22
7633381_20201116053931189_1_XLARGE	22
7633381_20201116053941597_1_XLARGE	22
7633381_20201116053954283_1_XLARGE	22
7633381_20201116054017402_1_XLARGE	23
7633381_20201116054005887_1_XLARGE	23
7633381_20201116054043453_1_XLARGE	23
7633381_20201116054031694_1_XLARGE	23
7633381_20201116054141893_1_XLARGE	23
7633381_20201116054154060_1_XLARGE	23
7633381_20201116054207429_1_XLARGE	24
7633381_20201116054231277_1_XLARGE	24
7633381_20201116054217388_1_XLARGE	24
7633381_20201116054126449_1_XLARGE	24
7633381_20201117040538791_1_XLARGE	24
7633381_20201117040549574_1_XLARGE	24
7633381_20201117040558182_1_XLARGE	24
7633381_20201117040607224_1_XLARGE	24
7633381_20201117040615280_1_XLARGE	25
7633381_20201117040623821_1_XLARGE	25

---

---

7633381_20201117040636601_1_XLARGE	25
КОНТАКТЫ	26
Контактная информация	26
Телефоны	26
Время работы	26
Адрес	26

# ХАРАКТЕРИСТИКИ

---

## Обзор

---

2016 Monte Carlo 5

LLC OWNED

Loaded With Tons of Options

- IPS 600 Diesels with Joystick Control - 650 Hours
- Alessandro Marchi Inflatable with Steering Console and 20 HP Mercury - Available
- Equipped with Nearly Every Available Option From the Factory.
- 6 TVs Including the Cockpit and Flybridge - All Have Covers
- 3 Stateroom, 2 Head Layout.
- Summer Galley on the Transom and Flybridge. Both Equipped with Grill, Sink and Prep Area.
- Hydraulic Swim Platform For Tender and Easy Water Access for Diving, Snorkeling Etc.
- Crew Quarters Doubles as Excellent Storage Area.
- Optional Dishwasher (Replaced With Fridge but Available)
- Washer/Dryer Combo Unit.
- KVH HD Satellite Equipped on All 6 TVs. Satellite Domes Custom Painted.
- Full Suite of Simrad Electronics with Added Second Display on the Bridge.
- Upgraded Interior with Beautiful, White Leather Finishes.
- Custom JL Audio Stereo Throughout - 10 Speakers, Dedicated Amp and Batteries
- Clean Engine Room with Easy Access to All Systems.
- LLC Owned Vessel
- Spare Props

## Основная информация

---

**Тип судна:** Моторная яхта

**Модельный год:** 2016

**Год постройки:** 2016

**Страна:** United States

## Размеры

---

**Длина общая:** 50' 0" (15.24m)

**Ширина:** 14' 2" (4.32m)

**Макс. осадка:** 4' 2" (1.27m)

## Скорость, вместимость и масса

---

**Крейс. скорость:** 25 Kts. (29 MPH)

**Макс. скорость:** 30 Kts. (35 MPH)

**Водоизмещение:** 31381 Pounds

**Вместимость воды:** 158 Gallons

**Объем топливного бака:** 344 Gallons

## Размещение

---

**Всего кают:** 3

**Всего ком. состава:** 2

## Корпус и палуба

---

**Материал корпуса:** Fiberglass

## Информация о двигателе

---

**Двигатели:** 2

**Производитель:** Volvo

**Модель:** IPS 600 - A396685

**Тип двигателя:** Inboard

**Тип топлива:** Diesel



---

# ПОДРОБНОЕ ОПИСАНИЕ

---

## Cockpit/ Swim Platform

---

- The cockpit is covered in gorgeous teak that continues into the galley and down to the hydraulic swim platform. The platform has a capacity of approximate 750 lbs.
- The Alessandro Marchi Tender with 20 HP Mercury is stored on the hydraulic platform. Tender is Available.
- There is no shortage of seating in the area and the retractable awning allows you to enjoy being outdoors in the shade.
- There is an electric cockpit shade that comes out of the hard top and shades the aft deck seating as well as the grill area.
- The custom JL Audio sound system sounds amazing and includes 10 speakers throughout the cockpit and flybridge with dedicated amps and batteries.
- Just below the cockpit seating you will find access to the crew cabin.
- The side decks are wide and safe with a high bow rail all the way around.

## Galley

---

- As you enter through the solid, 3-piece door from the cockpit the teak sole continues into the spacious galley. The doors open completely to create a very inviting space.
- The galley is finished in brushed oak cabinetry and solid surface countertops.
- She features an Edgestar dishwasher, 2- burner Kenyon cooktop, Danby microwave, Vitrefrigo icemaker/freezer and 2 freezer drawers. NOTE: The dishwasher has been removed and replaced with an additional refrigerator. The dishwasher is in storage and available.
- The galley has tons of storage space including glass and dish ware storage above the refrigeration drawers and a "lazy susan" style shelf system in the corner cabinet.

## Salon

---

- Just forward of the galley you will find the expansive salon with comfortable seating for up to 8 adults.
- The owner chose the best leather material offered by Beneteau for the sofas and accented it nicely with a beautiful hi-lo leather table that opens up to create a dining area for the whole salon.
- On the port and starboard sides you will find electric windows that allow for air flow through the lower helm and salon/galley areas.
- The main doors have the optional retractable screen to enjoy the breeze and avoid the bugs.
- Just behind the starboard love seat there is a 32 inch Samsung flat screen also on a hi-lo

actuator.

- AQUA has a Fusion stereo system throughout allowing the owner to adjust the volume and station independently in each area of the vessel with bluetooth capability and satellite music/weather module.
- A KVH HD Satellite was added to the vessel when new and each of the 6 TVs has its own receiver. The sound quality continues through the salon with the Bose surround sound system.
- The washer/dryer combo unit is conveniently located below the steps that lead down to the cabins.

---

## Helm Stations

---

- The lower helm seats 2 comfortably and gives great visibility nearly 365 degrees around. The single-piece windscreen is the main contributing factor to the great visibility.
- AQUA is equipped with IPS 600s and the desirable Joystick which is located just behind the electronic throttle controls.
- The boat is optioned with separate third joystick control in cockpit.
- She is equipped with a full suite of Simrad electronics including two 12 inch touch screen displays at the lower helm and a 12 inch and 9 inch on the upper helm. The plotter, radar, autopilot and forward facing sonar are all integrated into the displays. Just below is the handheld Simrad VHF.
- Just below the Simrad screens is the LCD Volvo display which gives a full readout of all engine data with additional analog gauges and rudder indicator above.
- To starboard on the helm is the optional Quick bow thruster control and Quick chain counter.
- The Lenco trim tab control is just aft of the chain counter.

---

## VIP Stateroom

---

- As you make your way down the centerline companionway the beautiful brushed oak and plush white carpet continue into the 3 staterooms.
- The VIP is forward and allows for tons of natural light with the 4 port holes and skylight/opening hatch above (both have retractable screens and shades).
- There is no shortage of storage in the VIP with a large hanging locker to port and shelved storage locker to starboard. There are also large storage cabinets above the port holes on the port and starboard sides.
- The island queen berth has custom bedding and decorative pillows.
- A Samsung flat screen hangs on the aft bulkhead and has an independent HD satellite box. The thermostat and Fusion stereo head unit are easily accessible next to the starboard locker.
- The VIP has private access to 1 of 2 heads which features a nice basin sink, teak sole and stall shower.

---

## Guest Stateroom

---

- The guest stateroom is located to starboard and also has nice natural light with 2 opening port holes and over/under bunks.
- Just aft of the bunks is a nice size hanging locker with Samsung flatscreen and Fusion stereo control above.
- Bose speakers throughout.

---

## Master Stateroom

---

- The master stateroom is one of the most impressive areas of AQUA. The waterline windows, both outfitted with opening port holes, lend to tons of natural light and beautiful views.
- The island queen is covered in custom bedding and decorative pillows. To either side of the berth are leather capped night stands and reading lights.
- Outboard of the berth are 2 large sofa/seating areas with storage below.
- There is ample storage throughout including 2 large hanging lockers.
- The en suite head has an impressive separate stall shower with a teak bench and seat.
- There is a beautiful, white basin sink and an opening port hole that allows fresh air into the space.

---

## Flybridge

---

- Known for the size, the MC5 flybridge is exemplary of one you would find on a much larger vessel. She boasts a seating area for up to 10 guests and a beautiful teak table that expands for dining.
- The sun pad converts to a bench seating area and makes a great forward-facing space to keep the captain company.
- Just aft of the helm is a summer galley with a second grill and freshwater sink. Below there is additional storage and a trash receptacle. Next to the aft sofa is yet another refrigeration box with thermostat.
- The flybridge TV is mounted aft and has a cover to protect it when not in use.
- An additional, stand-alone freezer was also added to the flybridge.
- The flybridge looks down over the bow sun pads and additional speakers.
- The KVH satellite domes are custom painted to match the cream gel coat on the top sides.

---

## Engine Room/ Mechanical

---

- IPS 600s - 435 HP - 650 Hours
- Port Serial: A396685
- Starboard Serial: A396686

- 13.5 kW Onan generator. Serial: J140756748
- CruiseAir chilled water AC system.
- 2 50 Amp shore chords both on Glindenning reels.
- 2 Dolphin Pro OEM 24.4 battery chargers.

## Service/ History

---

- Engine Service - July 2020
- IPS Service - August 2020
- Generator Service - August 2020

## Исключения

---

При продаже яхты исключаются личные вещи владельца.

## Отказ от ответственности

---

Компания предоставляет описание судна или яхты добросовестно, но не может гарантировать точность этой информации, а также не ручается за техническое состояние. Покупатель должен проинструктировать своих агентов или оценщиков исследовать представленную информацию более подробно, по собственному желанию. Продажа судна или яхты, изменение цены или снятие с продажи будет происходить без предварительного уведомления.

# ФОТОГРАФИИ

7633381\_20201116052635219\_1\_XLARGE



7633381\_20201116052639010\_1\_XLARGE



7633381\_20201116052641032\_1\_XLARGE



7633381\_20201116052647211\_1\_XLARGE



7633381\_20201116052650355\_1\_XLARGE



7633381\_20201116052655286\_1\_XLARGE



7633381\_20201116052658193\_1\_XLARGE



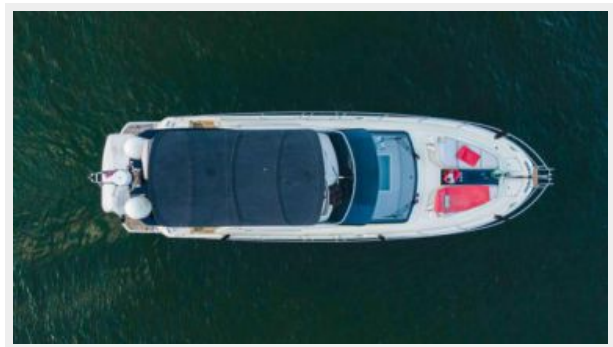
7633381\_20201116052701349\_1\_XLARGE



7633381\_20201116052707335\_1\_XLARGE



7633381\_20201116052712175\_1\_XLARGE



7633381\_20201116052718252\_1\_XLARGE



7633381\_20201116052722162\_1\_XLARGE



7633381\_20201116052726156\_1\_XLARGE



7633381\_20201116052735127\_1\_XLARGE



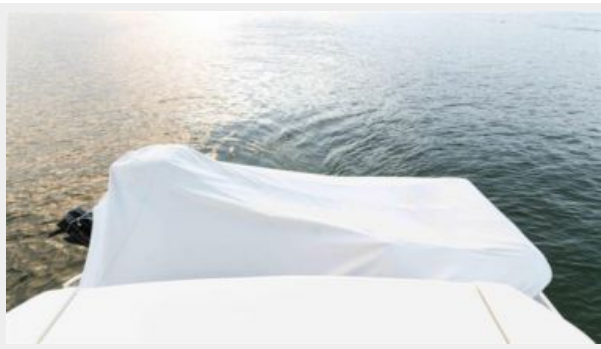
7633381\_20201116052738120\_1\_XLARGE



7633381\_20201116052817228\_1\_XLARGE



7633381\_20201116052824827\_1\_XLARGE



7633381\_20201116052850967\_1\_XLARGE



7633381\_20201116052901597\_1\_XLARGE



7633381\_20201116052908055\_1\_XLARGE



7633381\_20201116052922062\_1\_XLARGE



7633381\_20201116052934725\_1\_XLARGE



7633381\_20201116052956035\_1\_XLARGE



7633381\_20201116053041199\_1\_XLARGE



7633381\_20201116053052895\_1\_XLARGE



7633381\_20201116053113399\_1\_XLARGE



7633381\_20201116053123030\_1\_XLARGE



7633381\_20201116053139231\_1\_XLARGE



7633381\_20201116053149033\_1\_XLARGE



7633381\_20201116053158731\_1\_XLARGE





7633381\_20201116053215649\_1\_XLARGE



7633381\_20201116053227070\_1\_XLARGE



7633381\_20201116053236596\_1\_XLARGE



7633381\_20201116053247071\_1\_XLARGE



7633381\_20201116053259463\_1\_XLARGE



7633381\_20201117035901979\_1\_XLARGE



7633381\_20201117035911368\_1\_XLARGE



7633381\_20201117035921567\_1\_XLARGE



7633381\_20201117035929293\_1\_XLARGE



7633381\_20201117035936100\_1\_XLARGE



7633381\_20201117035943367\_1\_XLARGE



7633381\_20201117035952516\_1\_XLARGE



7633381\_2020111704000579\_1\_XLARGE



7633381\_20201117040009411\_1\_XLARGE



7633381\_20201116052945518\_1\_XLARGE



7633381\_2020111605433511\_1\_XLARGE



7633381\_20201116054348071\_1\_XLARGE



7633381\_20201116054402895\_1\_XLARGE



7633381\_20201116054413822\_1\_XLARGE



7633381\_20201116053336521\_1\_XLARGE



7633381\_20201116053350382\_1\_XLARGE



7633381\_20201116053401418\_1\_XLARGE



7633381\_20201116053410800\_1\_XLARGE



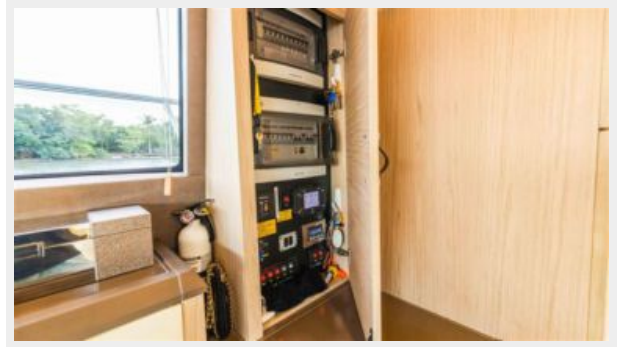
7633381\_20201116053424533\_1\_XLARGE



7633381\_20201116053436129\_1\_XLARGE



7633381\_20201116053447116\_1\_XLARGE



7633381\_20201116053459911\_1\_XLARGE



7633381\_20201116053509875\_1\_XLARGE



7633381\_20201116053541258\_1\_XLARGE



7633381\_20201116053555671\_1\_XLARGE



7633381\_20201116053608012\_1\_XLARGE



7633381\_20201116053620527\_1\_XLARGE



7633381\_20201116053634952\_1\_XLARGE



7633381\_20201116053642060\_1\_XLARGE



7633381\_20201116053655073\_1\_XLARGE



7633381\_20201116054241460\_1\_XLARGE



7633381\_20201116053736353\_1\_XLARGE



7633381\_20201116053753711\_1\_XLARGE



7633381\_20201116053813475\_1\_XLARGE



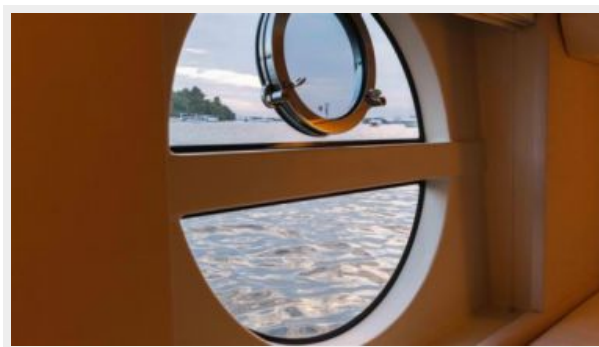
7633381\_20201116053825754\_1\_XLARGE



7633381\_20201116053839892\_1\_XLARGE



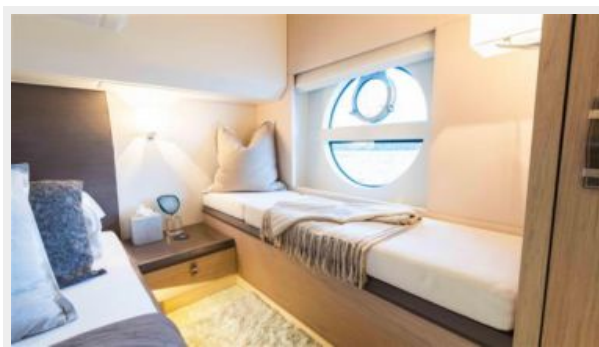
7633381\_20201116053903806\_1\_XLARGE



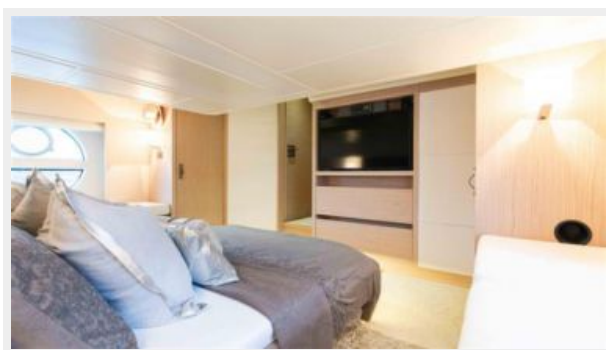
7633381\_20201116053918935\_1\_XLARGE



7633381\_20201116053931189\_1\_XLARGE



7633381\_20201116053941597\_1\_XLARGE



7633381\_20201116053954283\_1\_XLARGE



7633381\_20201116054017402\_1\_XLARGE



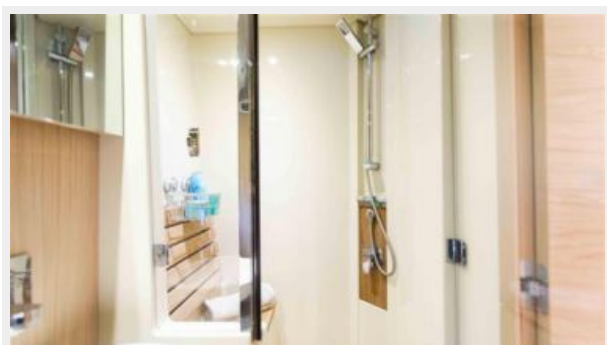
7633381\_20201116054005887\_1\_XLARGE



7633381\_20201116054043453\_1\_XLARGE



7633381\_20201116054031694\_1\_XLARGE



7633381\_20201116054141893\_1\_XLARGE



7633381\_20201116054154060\_1\_XLARGE



7633381\_20201116054207429\_1\_XLARGE



7633381\_20201116054231277\_1\_XLARGE



7633381\_20201116054217388\_1\_XLARGE



7633381\_20201116054126449\_1\_XLARGE



7633381\_20201117040538791\_1\_XLARGE



7633381\_20201117040549574\_1\_XLARGE



7633381\_20201117040558182\_1\_XLARGE



7633381\_20201117040607224\_1\_XLARGE





7633381\_20201117040615280\_1\_XLARGE



7633381\_20201117040623821\_1\_XLARGE



7633381\_20201117040636601\_1\_XLARGE



# КОНТАКТЫ

---

Андрей Шестаков (Andrey Shestakov) – ведущий яхтенный брокер отдела продаж яхт и судов компании Shestakov Yacht Sales Inc. Официальный представитель Shestakov Yacht Sales Inc. для русскоговорящих клиентов в центральном офисе компании в Майами/Форт Лодердейл/Флорида/США.

## Контактная информация

---

Email: [andrey@shestakovyachtsales.com](mailto:andrey@shestakovyachtsales.com)

Web: [shestakovyachtsales.com](http://shestakovyachtsales.com)

## Телефоны

---

Краснодарский край: **+7(918)465-66-44**

США, Майами, Флорида: **+1(954)274-4435**

## Время работы

---

Понедельник – Суббота: **9:00 - 21:00**  
EDT

Воскресенье: **Закрито**

## Адрес

---



Harbour Towne Marina, 850 NE 3rd St,  
STE 213, Dania, FL 33004