

## SETBALL — DE CESARI



**Builder:** DE CESARI

**Year Built:** 1996

**Model:** Center Cockpit

**Price:** PRICE ON APPLICATION

**Location:** Italy

**LOA:** 57' 2" (17.40m)

**Beam:** 16' 3" (4.94m)

**Min Draft:** 7' 5" (2.26m)

**Max Draft:** 7' 5" (2.26m)

**Cruise Speed:** 8 Kts. (9 MPH)

**Max Speed:** 10 Kts. (12 MPH)

Our experienced yacht broker, Andrey Shestakov, will help you choose and buy a yacht that best suits your needs **Setball — DE CESARI** from our catalogue. Presently, at Shestakov Yacht Sales Inc., we have a wide variety of yachts available on our sale's list. We also work in close contact with all the big yacht manufacturers from all over the world.

If you would like to buy a yacht **Setball — DE CESARI** or would like help answering any questions concerning purchasing, selling or chartering a yacht, please call **+1(954)274-4435**

# TABLE OF CONTENTS

TABLE OF CONTENTS	2
SPECIFICATIONS	4
Overview	4
Basic Information	4
Dimensions	4
Speed, Capacities and Weight	5
Accommodations	5
Hull and Deck Information	5
Engine Information	5
DETAILED INFORMATION	6
Details	6
Exclusions	9
Disclaimer	9
PHOTOS	10
_MOT2437-Pano	10
_MOT2486-Pano	10
_MOT2672-Pano	10
_MOT2589-Pano	10
_MOT2642	11
_MOT2646-HDR	11
_MOT2698-Pano	11
_MOT2548-Pano	11
_MOT2726	12
_MOT3401	12
_MOT3424	12
_MOT3437	12
_MOT3442	12
Setball-plan	12

---

Setbal - out	13
CONTACTS	14
Contact details	14
Telephones	14
Office hours	14
Address	14

---

# SPECIFICATIONS

---

## Overview

---

Built by the Italian shipyard De Cesari to a design by Studio Starkel, SETBALL was delivered to her first owner in 1996 as a cutter-rigged central cockpit sailing yacht. SETBALL can accommodate up to six guests in three staterooms, one master room with en-suite facilities, one double room with en-suite facilities and one guest room with a Pullman accommodation. SETBALL was built in laminated mahogany and features a classic interior of mahogany panels, floors and frames. SETBALL features a creative and practical deck layout: her aft sailing cockpit, is incredibly well-designed and equipped, an appealing sunbathing area stands back to the cockpit, and a room dedicated to a workshop has been created next to the engine room. Following the substantial refit from 2017 to 2019, the De Cesari Starkel 57 SETBALL is now back on the market for sale and represents a great value proposition for a discerning sailor.

## Basic Information

---

**Category:** Center Cockpit

**Sub Category:** Cruising Sailboat

**Model Year:** 1996

**Year Built:** 1996

**Refit Year:** 2019

**Country:** Italy

**Vessel Top:** Bimini Top

## Dimensions

---

**LOA:** 57' 2" (17.40m)

**LWL:** 0' 0" (0.00m)

**LOD:** 0' 0" (0.00m)

**Beam:** 16' 3" (4.94m)

**Min Draft:** 7' 5" (2.26m)

**Max Draft:** 7' 5" (2.26m)

**Clearance:** 0' 0" (0.00m)

**MFG Length:** 0' 0" (0.00m)

---

## Speed, Capacities and Weight

---

**Cruise Speed:** 8 Kts. (9 MPH)

**Cruise Speed Range:** 600

**Max Speed:** 10 Kts. (12 MPH)

**Displacement:** 47503.00359314 Pounds

**Gross Tonnage:** 24.88 Pounds

**Water Capacity:** 211.3376416 Gallons

**Fuel Capacity:** 165.371704552 Gallons

---

## Accommodations

---

**Total Cabins:** 3

**Total Berths:** 6

**Sleeps:** 8

**Crew Berths:** 2

**Crew Sleeps:** 2

---

## Hull and Deck Information

---

**Hull Material:** GRP/Wood

**Deck Material:** Teak

**Hull Configuration:** Bulb Keel

**Hull Color:** White

**Hull Finish:** Inox

**Hull Designer:** Starkel

**Exterior Designer:** Starkel

**Interior Designer:** Starkel

---

## Engine Information

---

**Engines:** 1

**Manufacturer:** Volvo Penta

**Model:** TAMD31PA

**Engine Type:** Inboard

**Fuel Type:** Diesel

# DETAILED INFORMATION

## Details

### TECHNICAL SPECIFICATION

#### Main Characteristics

Name	Setball
Type	Sailing
Year	1996
Refit	2017/2020
Flag	Italian
L <sub>OA</sub>	17.40
Beam	4.94
Draft	2.26
Gross tonnage	24.88
Full Load Displacement	21.54
Hull Material	GRP/Wood
Superstructure Material	Wood
Hull Color	White
Superstructure Color	White
Hull Configuration	Bulb Keel
Naval Architect	Starkel
Exterior Designer	Starkel
Interior Designer	Starkel
Staterooms	3
Sleeps	8
Crew Quarters	1
Crew Berths	2
Class	RINA certification for yacht under 24m (RINA certificate renewed 2020 - 2024)

#### Capacities

Cruise Speed	8 Knts	Approx. 8 lt/h
Max. Speed	9 Knts	Approx. 10 lt/h
Fuel Capacity		626 Lt.

Water Capacity		800 Lt.
Range	600 nm	@ 8 kn
<b>Machinery</b>		
Engines	1 Volvo Penta	
Engine Model	TAMD31PA	
Engine Hours	2.200 approx.	
Reduction Gear	Volvo Penta HS1A 2.26:1	
Fuel	Diesel	
Maine Engines Fuel Filters	Volvo	
Propulsion	Shaft line with Variable pitch propeller	
Bow Thruster	Yes	
Generators	6kW – Paguro	
Generators Hours	134	
Shore Power	230V	
Service Batteries	8 x 2V GEL - 800 Ah C20 (2019)	
Engines Starter Batteries	2 x 12V ATF - 200 Ah C20 (2016)	
Generators Starter Batteries	1 x 12V ATF - 100 Ah C20 (2016)	
Bow Thruster Batteries	2 x 12V ATF - 200 Ah C20 (2016)	
Engines Starter Battery Charger	Yes	
Service Battery Charger 1	Mastervolt Chargemaster Plus 12/75 (2020)	
Service Battery Charger 2	Mastervolt Mass 12/80 ()	
Inverters	Yes 800 W	
Air Conditioning	No	
Watermaker	No	
Fresh Water Pump	Yes	
Water Heaters	Yes	
Engine room Blowers	Yes	
Engine room Air Extractor	Yes	
Submersible Bilge Pumps	Yes	
Toilets System	2 x Electric WC Tecma Silence Plus + 1 x Manual Jabsco (2020)	
Black/Grey Water Treatment	No	
<b>Accommodations</b>		
Owner/Guests	3/6	
Crew Cabins	1/2	
Salon	1	

Dining Area  
WC 1  
3

### Spars, Rigging & Sails

Mast Alluminium (painted 2017)  
 Boom Alluminium (painted 2017)  
 Standing Rigging Steel braid (2017)  
 Sails 72 mq Main Sail (2003)  
 92 mq Genoa 138% (2003)  
 65 mq Staysail (2007)  
 24 mq Storm Jib (2017) 206 mq Gennaker (2007) 62  
 mq Code0 (2007)  
 Winches 8 x Antal (3 x hydraulic )  
 Vang & Backstay Bamar hydraulic backstay + Bamar Vang

### Galley & Laundry Equipment

Fridges 2 Fridges 1 Freezer  
 Oven 1 Gas  
 Microwave Yes  
 Cookers 1 Gas x 4 Burners

### Communication/Navigation

Autopilot Raymarine (total refit 2017/2021)  
 GPS Raymarine + Garmin  
 Plotter Raymarine  
 Echosounder Raymarine  
 VHF 2 x Garmin + Icom  
 Radar Raymarine + Koden

### Deck Equipment

Windlass Yes 1500 W  
 Anchor Yes (Delta e 32 Kg)  
 Chain 10 mm. x 90 mt.  
 Capstan Yes  
 Passerelle Yes manual

### Security & Safety

EPIRB Yes



---

Liferaft	Yes 2 x Almar 6 pax
Fire Fighting System	Yes
Tender	Yes

## Exclusions

---

Owner's personal belongings.

## Disclaimer

---

The Company offers the details of this vessel or yacht in good faith but cannot guarantee or warrant the accuracy of this information nor warrant the condition of the vessel. A buyer should instruct his representatives, agents, or his surveyors, to investigate such details as the buyer desires validated. This vessel or yacht is offered subject to prior sale, price change, or withdrawal without notice.

# PHOTOS

**\_MOT2437-Pano**



**\_MOT2486-Pano**



**\_MOT2672-Pano**



**\_MOT2589-Pano**



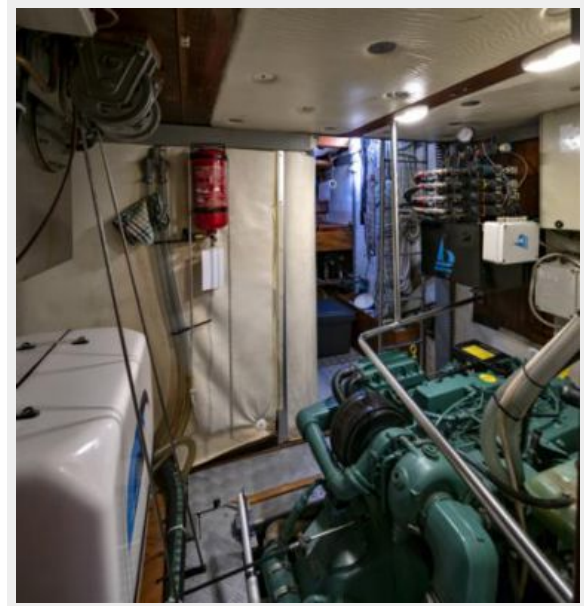
MOT2642



MOT2646-HDR



MOT2698-Pano

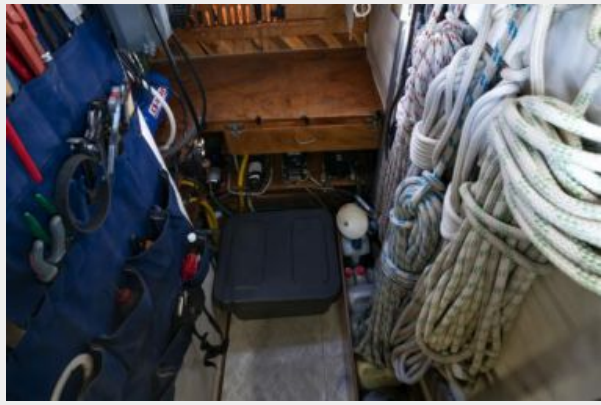


MOT2548-Pano





**\_MOT2726**



**\_MOT3401**



**\_MOT3424**



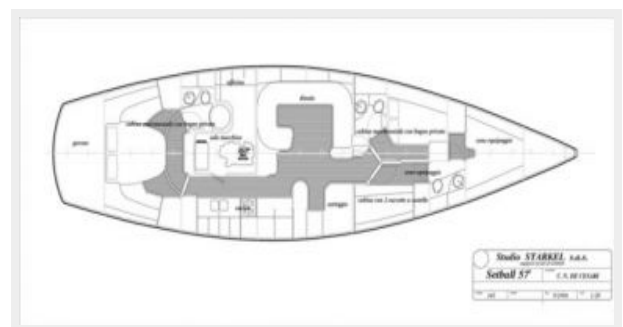
**\_MOT3437**



**\_MOT3442**



**Setball-plan**





# CONTACTS

---

Andrey Shestakov, leading yacht broker of the sales department of Shestakov Yacht Sales Inc. Shestakov Yacht Sales Inc., the official representative of the Miami/Fort Lauderdale FL headquarters.

## Contact details

---

Email: [andrey@shestakovyachtsales.com](mailto:andrey@shestakovyachtsales.com)

Web: [shestakovyachtsales.com/en/](http://shestakovyachtsales.com/en/)

## Telephones

---

USA: +1(954)274-4435

## Office hours

---

Monday – Saturday: **9:00 - 21:00** EDT

Sunday: **closed**

## Address

---



Harbour Towne Marina, 850 NE 3rd St,  
STE 213, Dania, FL 33004