

CHEROKEE LULLABY II — HUNTER



Судостроитель: HUNTER

Год постройки: 2001

Модель: Cruising/Racing Sailboat

Цена: ЦЕНА ЯХТЫ ПО ЗАПРОСУ

Местонахождение: United States

Длина общая: 28' 6" (8.69m)

Ширина: 10' 9" (3.28m)

Макс. осадка: 3' 6" (1.07m)

Купить Cherokee Lullaby II — HUNTER а также выбрать подходящую вам яхту из нашего каталога яхт вам поможет опытный яхтенный брокер Андрей Шестаков. На сегодняшний день компания Shestakov Yacht Sales Inc. имеет большое количество яхт в собственном списке продаж, а также тесно сотрудничает со всеми крупными яхтенными производителями по всему миру.

Для того чтобы купить яхту Cherokee Lullaby II — HUNTER а также проконсультироваться по любому вопросу связанному с покупкой, продажей, чартером яхт позвоните по телефону **+7(918)465-66-44**.

ОГЛАВЛЕНИЕ

ОГЛАВЛЕНИЕ	2
ХАРАКТЕРИСТИКИ	4
Основная информация	4
Размеры	4
Размещение	4
Корпус и палуба	4
Информация о двигателе	4
ПОДРОБНОЕ ОПИСАНИЕ	5
The Little Boat That Could	5
Исключения	10
Отказ от ответственности	10
ФОТОГРАФИИ	11
20200823_183829	11
20200823_183742	11
aft berth	11
aft berth w o mattress	11
bow and keel	12
aft berth	12
Froli springs	12
cover photo	12
galley	13
head	13
IMG_7736	13
IMG_7720	13
IMG_7743	14
IMG_7752	14
IMG_7754	14
IMG_7759	14

IMG_7761	15
IMG_7764	15
IMG_7769	15
IMG_7765	15
IMG_7777	16
IMG_7779	16
IMG_7780	16
IMG_7785	16
IMG_7790	17
IMG_7791	17
IMG_7801	17
IMG_7804	17
IMG_7810	18
IMG_7808	18
IMG_7812	18
IMG_7816	18
IMG_7818	18
IMG_7822	18
nav station	19
profile of boom and in mast furler	19
V- berth	19
КОНТАКТЫ	20
Контактная информация	20
Телефоны	20
Время работы	20
Адрес	20

ПОДРОБНОЕ ОПИСАНИЕ

The Little Boat That Could

SV Cherokee Lullaby II is a 2001 Hunter 290, which the present owners have had for sixteen years. Affectionately known as “the little boat that could” the current owners have sailed her both offshore and inside the ICW from Savannah as far north as Georgetown, South Carolina and as far south as Key Biscayne, Florida. In 2012 she was sailed across the Gulf Stream and spent 5 months in the Bahamas visiting places like Bimini, Frazier’s Hog Cay, Nassau, and the Exumas chain from Highbourne Cay down to Staniel Cay.

The Cherokee Lullaby’s shoal draft of 3 ft. 6 inches is perfect for the shifting sands of the southeast coast and for getting into the many spectacular anchorages just behind the barrier islands of her home waters. At cruising speed, her 18 hp Yanmar diesel engine sips fuel at the rate of one-half gallon per hour. That’s right...two hours per gallon! The 135-watt Kyacera solar panel and Blue-Sky controller provide ample recharging to operate the boat systems for extended stays at anchor. The canvas cockpit enclosures were custom made in 2016 and increase the living space aboard substantially and provide a living space that is comfortable and dry in all weather conditions and seasons. Her oversized 22 lb. Rocna anchor with 60 feet of chain and 150 feet of nylon rode provide a safe and reliable ground tackle system that allows for worry free nights at anchor.

The engine has been professionally maintained and with only 1331 engine hours has more than 80% of its useful life left. The bottom has been repainted with antifouling every two years. Lifelines were replaced in 2018. Bronze thru-hulls have been replaced over several seasons, as well. The furling head sail was new in 2019 and the furling mainsail was new in 2020. Cherokee Lullaby has two Garmin GPS chartplotters and two depth finders providing redundancy of key electronics.

Below deck the living space features a galley to port with an ice box and two burner propane stove. Off the galley to aft is the entrance to the large double berth aft cabin. To starboard is the head with marine toilet, vanity/ sink and shower. The rear facing nav station sits just forward of the head at the foot of the companionway steps. The salon features two settees, a teak dining table that breaks down to create a double berth in the salon and a hanging storage closet that can double as a pantry. Forward is the vee berth with large overhead hatch for good ventilation.

Cherokee Lullaby is a well-maintained vessel, fully capable of reaching places like the Bahamas or providing endless family adventures by anchoring behind the local barrier islands and taking a dinghy or kayak to shore. SV Cherokee Lullaby puts endless adventures within your reach!

SPECIFICATIONS

Dimensions

LOA 28ft 6 in

Length at Waterline	26ft 11 in
Beam	10 ft. 9 in
Draft	3 ft. 6in.
Displacement	7400 lbs.
Overhead Clearance	44 ft.

Propulsion

Engine Make	Yanmar Diesel
Engine Model	2GM20F fresh water cooled
Horsepower	18 hp
Engine Hours	1331

Traditional Stuffing Box and Packing Nut

Electrical System

AC Power	Shore power 110 volt
DC Power	Engine Generator and 12 volt batteries
Number/Type of Batteries	2 Deep cycle 12-volt lead acid

AC Battery Charger

135-watt Kyacera solar panel and Blue-Sky controller

Tankage

Fuel Tank	18 gallons
Fresh water tank	40 gallons
Holding Tank	approx. 20 gallons

Hull / Deck

Keel	Shoal draft Fin
------	-----------------

Stainless steel keel bolts cast into lead keel

Deck/Hull construction	Fiberglas w/ white gelcoat / molded non-skid
------------------------	--

Three opening hatches

5 opening portlights

Stainless Steel Cockpit arch with traveler

Bottom Paint and hull waxed 8/2020

6 heavy thru bolted deck cleats

Lifelines replaced 2018

Below waterline thru-hulls and sea-cocks

Bronze -alloy some replaced in 2015 and others in 2019

Steering System

Edson Pedestal steering with console

Stainless cable and quadrant

Ground Tackle

Main anchor: Rocna 22 lb.

Spare anchor: Danforth

60 ft. chain and 150 ft. of 5/8 nylon rode

Stainless Steel anchor roller

Canvas and Support Structure

Custom dodger, Bimini and full enclosures (new in 2016)

Canvas integrated with supports from Stainless Steel Cockpit Arch

Bimini support structure is stainless steel tubing (no straps)

Companionway canvas screen

Bow tarp system

Sails and Rigging

Mainsail Seldon In-mast furling (new furling main sail October 2020)

Jib Seldon Roller furling (new jib sail 2019) 100%

Standing Rigging Seldon aluminum mast

Swept back spreaders

Aluminum boom with rigid-vang

Running Rigging Jib halyard and sheets replaced 2019

Winches Two cabin Top Lewmar 16 winches

One mast mounted winch for roller furling main sail

Sail Tracks Port and Starboard deck mounted sail tracks with cars

Roller Furler Furlex 100S

Cam Cleats Lewmar spinlocks on each side of companionway

Whisker Pole

All lines led aft to cockpit

Electronics

Two depth finders (one stand alone and one on chart plotter)

Garmin GPSmap 740s Color Chartplotter with Touch Screen and Sonar

Raymarine Sonar (stand-alone backup)

Garmin GPSmap 640 (Hardwired with 8 hr. back-up battery)

Raymarine Ray53 DSC VHF Radio

Galley

Deep insulated icebox

Stainless steel sink in galley

Two-burner Propane cook stove

Pressurized fresh water at galley sink, head vanity and stern shower

Solid wood cabinets and drawers over and under galley counter top

Corian Counter tops in Galley and on Head Vanity

Cabin Appointments

Solid wood cabin and head doors and cabinets

12-volt cabin lights throughout vessel – most replaced with LED lights

L shaped settee to starboard side of Saloon Table

Straight settee to port side of Saloon table

Saloon Table converts to sleeping berth

Teak Wood bulkheads and cabinet joinery

Interior curtains and pillows match blue upholstery fabric

Froli mattress spring system for v berth

Showers in Head and in cockpit

Caframo 12-volt fans in V-berth and Saloon

Teak and Holly Cabin Sole

Sanitation System

Jabsco Manual Flush Marine Toilet –

18-gallon Polyethylene holding tank (tank monitor replaced in 2020)

Macerator

Y- valve

Additional Features

Manuals for all systems aboard

Garhaur Stainless Steel Outboard motor lift

Outboard Motor mount

Throwable PFD

50 ft. shore power cord

Fire extinguishers

Two forward dock lines two aft dock lines and two mid ship spring lines

Life jackets

Flares

Air horn

First Aid Kit

Исключения

При продаже яхты исключаются личные вещи владельца.

Отказ от ответственности

Компания предоставляет описание судна или яхты добросовестно, но не может гарантировать точность этой информации, а также не ручается за техническое состояние. Покупатель должен проинструктировать своих агентов или оценщиков исследовать представленную информацию более подробно, по собственному желанию. Продажа судна или яхты, изменение цены или снятие с продажи будет происходить без предварительного уведомления.

ФОТОГРАФИИ

20200823_183742



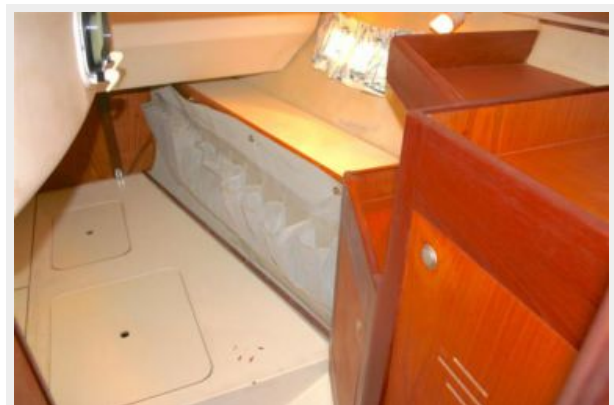
20200823_183829



aft berth



aft berth w o mattress



aft berth



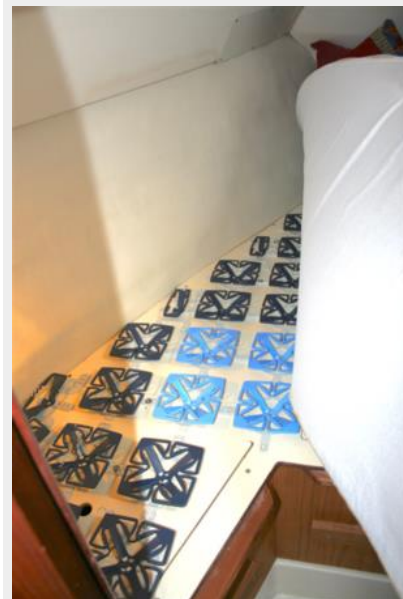
bow and keel



cover photo



Froli springs



galley



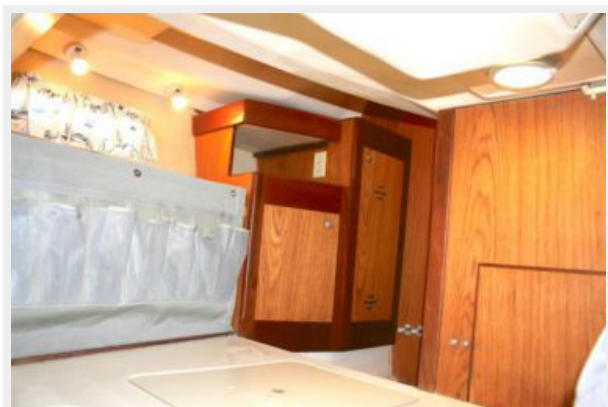
head



IMG_7736



IMG_7720



IMG_7743



IMG_7752



IMG_7754



IMG_7759



IMG_7761



IMG_7764



IMG_7769

IMG_7765



IMG_7777



IMG_7779



IMG_7780



IMG_7785



IMG_7790



IMG_7791



IMG_7801



IMG_7804



IMG_7808



IMG_7810



IMG_7812



IMG_7816



IMG_7818



IMG_7822



nav station



profile of boom and in mast furler



V- berth



КОНТАКТЫ

Андрей Шестаков (Andrey Shestakov) – ведущий яхтенный брокер отдела продаж яхт и судов компании Shestakov Yacht Sales Inc. Официальный представитель Shestakov Yacht Sales Inc. для русскоговорящих клиентов в центральном офисе компании в Майами/Форт Лодердейл/Флорида/США.

Контактная информация

Email: andrey@shestakovyachtsales.com

Web: shestakovyachtsales.com

Телефоны

Краснодарский край: **+7(918)465-66-44**

США, Майами, Флорида: **+1(954)274-4435**

Время работы

Понедельник – Суббота: **9:00 - 21:00**
EDT

Воскресенье: **Закрито**

Адрес



Harbour Towne Marina, 850 NE 3rd St,
STE 213, Dania, FL 33004