

## MEMORIES — AZIMUT



**Builder:** AZIMUT

**Year Built:** 2017

**Model:** Motor Yacht

**Price:** PRICE ON APPLICATION

**Location:** Greece

**LOA:** 82' 9" (25.20m)

**Beam:** 19' 9" (6.00m)

**Max Draft:** 5' 8" (1.72m)

**Cruise Speed:** 26 Kts. (30 MPH)

**Max Speed:** 30 Kts. (35 MPH)

Our experienced yacht broker, Andrey Shestakov, will help you choose and buy a yacht that best suits your needs **MEMORIES — AZIMUT** from our catalogue. Presently, at Shestakov Yacht Sales Inc., we have a wide variety of yachts available on our sale's list. We also work in close contact with all the big yacht manufacturers from all over the world.

If you would like to buy a yacht **MEMORIES — AZIMUT** or would like help answering any questions concerning purchasing, selling or chartering a yacht, please call **+1(954)274-4435**

# TABLE OF CONTENTS

TABLE OF CONTENTS	2
SPECIFICATIONS	5
Overview	5
Basic Information	5
Dimensions	5
Speed, Capacities and Weight	6
Accommodations	6
Hull and Deck Information	6
Engine Information	6
DETAILED INFORMATION	7
Additional Options	7
Exclusions	8
Disclaimer	8
PHOTOS	9
Exterior M/Y Azimut 80 "MEMORIES"	9
Exterior M/Y Azimut 80 "MEMORIES"	9
Exterior M/Y Azimut 80 "MEMORIES"	9
Exterior M/Y Azimut 80 "MEMORIES"	9
Exterior M/Y Azimut 80 "MEMORIES"	9
Exterior M/Y Azimut 80 "MEMORIES"	9
Lounge area on bow	10
Lounge area on bow	10
Seating area on bow with teak coffee table and Bimini top	10
Sunbathing cushions on bow	10
Flybridge	10
Sunbathing area on aft flybridge	10
Seating area next to helm station on fly convertible in sunbathing area	11
Dining area and wet bar on flybridge	11

Seating area next to helm station on fly convertible in sunbathing area	11
Swimming platform	11
Dining area on cockpit	11
Salon on the main deck	11
Salon on the main deck	12
Salon sofa on port side	12
Salon interior details	12
Salon on the main deck	12
Salon sofa on starboard side	12
Salon sofa on starboard side	12
Dinette in salon	13
Dinette in salon	13
Dinette in salon	13
Dinette in salon	13
Access to main helm station	13
Main helm station	13
Steps to lower deck	14
Master cabin	14
Master head	14
Master head	14
Guest cabin on starboard side	15
VIP cabin on bow	15
Flybridge	15
Main deck	15
Lower deck	15
CONTACTS	16
Contact details	16
Telephones	16
Office hours	16

Address

16

# SPECIFICATIONS

## Overview

**M/Y MEMORIES Azimut 80** is a perfect example of a yacht in up to 24 meters category (actual length is 25.2 meters) in perfect technical and aesthetic condition. MEMORIES spent the 2020 season cruising along the Turkish coast for about 3 weeks in total, and in the previous season Athens had become the main point of destination. The yacht is equipped with all the necessary modern equipment for a comfortable stay, specifically autonomous one, at anchor in the bays of the islands or the endless coastlines of the Mediterranean Sea. The main equipment includes a stabilizer (stabilizers fins), hardtop on flybridge, Raymarine Gold navigation package, TRACVISION TV6 satellite TV system, watermaker 180 l/h, two Onan generators, aft crew cabins for 3 people, washing and dryer machines, dishwasher and many other options. Add to this the interiors penned by the world-famous *Achille Salvagni* and the exterior design with layouts by *Stefano Righini* and you will get one of the finest examples of a classic 4-cabin yacht. **The yacht started a new 18-month period in EU waters in November 2020. Seasonal Service is scheduled for June 2020 in Athens.** Inspection of a yacht at any time by agreement. The yacht is moored in Athens.

## Basic Information

**Category:** Motor Yacht

**Sub Category:** Flybridge

**Model Year:** 2017

**Year Built:** 2017

**Country:** Greece

**Vessel Top:** Hardtop

**Fly Bridge:** Yes

**Cockpit:** Yes

## Dimensions

**LOA:** 82' 9" (25.20m)

**Beam:** 19' 9" (6.00m)

**Max Draft:** 5' 8" (1.72m)

**MFG Length:** 77' 10" (23.71m)

## Speed, Capacities and Weight

---

**Cruise Speed:** 26 Kts. (30 MPH)

**Cruise Speed Range:** 256

**Max Speed:** 30 Kts. (35 MPH)

**Displacement:** 134481.97982 Pounds

**Water Capacity:** 290.5892572 Gallons

**Holding Tank:** 237.7548468 Gallons

**Fuel Capacity:** 1585.032312 Gallons

## Accommodations

---

**Total Cabins:** 4

**Total Berths:** 9

**Sleeps:** 1

**Total Heads:** 5

**Captain Cabin:** True

**Crew Berths:** 3

**Crew Heads:** 1

## Hull and Deck Information

---

**Hull Material:** Fiberglass

**Deck Material:** Teak over Fiberglass

**Hull Color:** Silver

**Exterior Designer:** Stefano Righini

**Interior Designer:** Salvagni Architetti

## Engine Information

---

**Engines:** 2

**Manufacturer:** MAN

**Model:** CR V12

**Engine Type:** Inboard

**Fuel Type:** Diesel

---

# DETAILED INFORMATION

---

## Additional Options

---

- 1800HP MAN 12 V engines
- Stern Thruster (hydraulic)
- Stabilizing fins
- 2 27KW Onan generators
- Hard Top
- Hull painting
- Teak on flybridge
- Raymarine videocameras (CAM200IP in cockpit and on fly and AX08 in engine
- Cockpit docking station with Marex joystick control for engines and thruster
- Telescopic gangway
- Electric awning for aft fly
- Ais 650
- Sat Tv system Tracvision TV6
- Raymarine Gold Package
- Electric searchlight (in front of windshield)
- Smoke detection system
- Isolation transformer
- VHF emergency supply kit
- Shore water plug
- Pop-up cleats on swimming platform
- Hatch on fly
- Bow table on fly lifting version (matt)
- Co- pilot flybridge seat
- Cockpit enclosure with sides access
- Extra conduits
- 120 mt anchor chain
- Under water lights (nr.4)
- KVH satellite TV AntennaTV5/TV6 predisposition
- Additional cleats in midship
- Hi- lo system for TV in salon (TV not included)
- Watermaker 180 l/h
- Wi-fi repeater in crew area
- Audio Video Package
- Two flood lights on aft fly
- Coffee table on bow in natural teak
- Cockpit/fly tables and panel doors of the external furnitures in natural teak
- Electric folding bimini top
- Credit for kvh satellite Tv antenna
- Refrigerator in crew cabin

- Dishwasher in galley
- Dimmers for interiors
- Icemaker in cockpit
- Icemaker on fly
- Winecooler in saloon
- Microwave in crew cabin
- Additional TV socket
- Refrigerator with freezer in cockpit
- Additional folding bed in starboard guest cabin
- Third bed in crew cabin
- Mosquito nets for potholes
- Safe in master cabin
- Predisposition for washer and drayer separate unit in crew cabin
- Courtesy lights in all steps
- Predisposition for crane installation on fly
- Sat/Com Phone installation
- Empty Dome in Silver colour
- Furniture with drawers in master cabin
- Modify Vip bed making it larger at feet
- Washer and drayer in crew area
- Change external cushions colour to 20057/12
- Wall light on the central panel on the bow in salon
- Add 2 underwater lights on each side
- Additional shuko sockets
- Name on transom (MEMORIES)
- Tender with outboard engine

## Exclusions

---

Owner's personal belongings.

## Disclaimer

---

The Company offers the details of this vessel or yacht in good faith but cannot guarantee or warrant the accuracy of this information nor warrant the condition of the vessel. A buyer should instruct his representatives, agents, or his surveyors, to investigate such details as the buyer desires validated. This vessel or yacht is offered subject to prior sale, price change, or withdrawal without notice.



# PHOTOS

**Exterior M/Y Azimut 80 "MEMORIES"**



**Exterior M/Y Azimut 80 "MEMORIES"**



**Exterior M/Y Azimut 80 "MEMORIES"**



**Exterior M/Y Azimut 80 "MEMORIES"**



**Exterior M/Y Azimut 80 "MEMORIES"**



**Exterior M/Y Azimut 80 "MEMORIES"**



**Lounge area on bow****Lounge area on bow****Sunbathing cushions on bow****Seating area on bow with teak coffee table and Bimini top****Flybridge****Sunbathing area on aft flybridge**



**Dining area and wet bar on flybridge**



**Seating area next to helm station on fly convertible in sunbathing area**



**Seating area next to helm station on fly convertible in sunbathing area**



**Swimming platform**

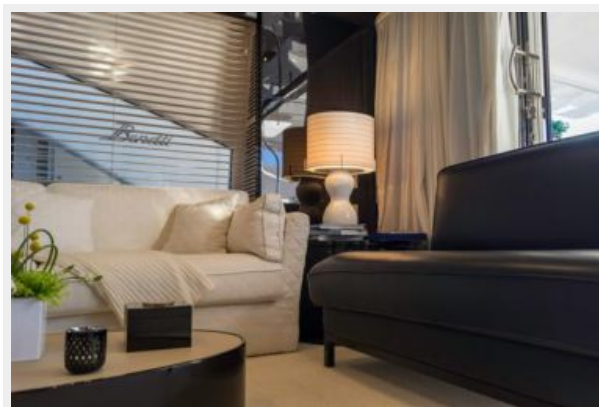


**Dining area on cockpit**



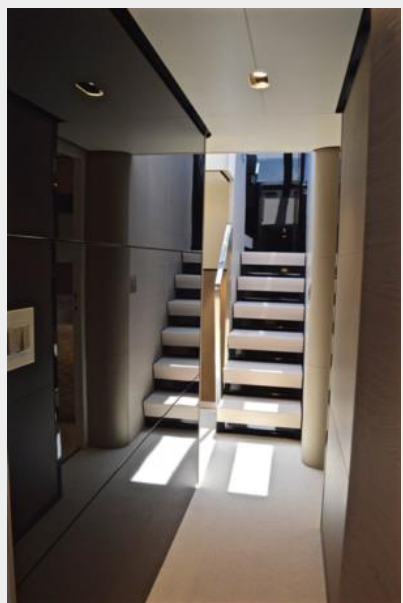
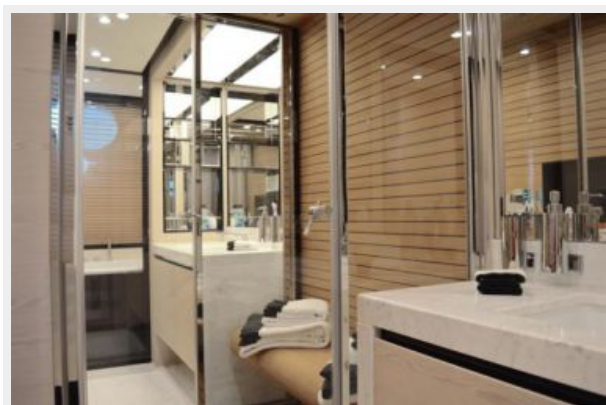
**Salon on the main deck**

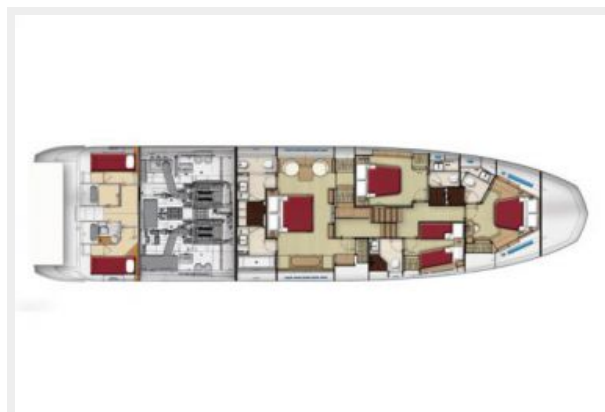


**Salon on the main deck****Salon sofa on port side****Salon interior details****Salon on the main deck****Salon sofa on starboard side****Salon sofa on starboard side**



**Dinette in salon****Dinette in salon****Dinette in salon****Dinette in salon****Access to main helm station****Main helm station**

**Steps to lower deck****Master cabin****Master head****Master head**

**VIP cabin on bow****Guest cabin on starboard side****Flybridge****Main deck****Lower deck**

# CONTACTS

---

Andrey Shestakov, leading yacht broker of the sales department of Shestakov Yacht Sales Inc. Shestakov Yacht Sales Inc., the official representative of the Miami/Fort Lauderdale FL headquarters.

## Contact details

---

Email:  
**andrey@shestakovyachtsales.com**

Web: [shestakovyachtsales.com/en/](http://shestakovyachtsales.com/en/)

## Telephones

---

USA: **+1(954)274-4435**

## Office hours

---

Monday – Saturday: **9:00 - 21:00 EDT**

Sunday: **closed**

## Address

---



Harbour Towne Marina, 850 NE 3rd St,  
STE 213, Dania, FL 33004