

NO NAME — BUDDY DAVIS



Builder: BUDDY DAVIS

Year Built: 1989

Model: Sport Fisherman

Price: PRICE ON APPLICATION

Location: United States

LOA: 61' 0" (18.59m)

Beam: 18' 0" (5.49m)

Max Draft: 5' 8" (1.73m)

Cruise Speed: 23 Kts. (26 MPH)

Max Speed: 28 Kts. (32 MPH)

Our experienced yacht broker, Andrey Shestakov, will help you choose and buy a yacht that best suits your needs **No Name — BUDDY DAVIS** from our catalogue. Presently, at Shestakov Yacht Sales Inc., we have a wide variety of yachts available on our sale's list. We also work in close contact with all the big yacht manufacturers from all over the world.

If you would like to buy a yacht **No Name — BUDDY DAVIS** or would like help answering any questions concerning purchasing, selling or chartering a yacht, please call **+1(954)274-4435**

TABLE OF CONTENTS

TABLE OF CONTENTS	2
SPECIFICATIONS	6
Overview	6
Basic Information	6
Dimensions	6
Speed, Capacities and Weight	6
Accommodations	6
Hull and Deck Information	6
Engine Information	7
DETAILED INFORMATION	8
Accommodations	8
Salon	8
Galley	8
Master Stateroom	8
Guest Stateroom	9
VIP Head	9
Guest Stateroom 2	9
Aft starboard and stateroom	10
Guest Head	10
Fly Bridge	10
Electronics & Navigational Equipment	11
Engineer Room / Mechanical Equipment	11
Cockpit	11
Deck Equipment	12
Exclusions	12
Exclusions	12
Disclaimer	12
PHOTOS	13

1	13
2	13
3	13
4	13
5	13
6	13
7	14
8	14
9	14
10	14
11	14
12	14
13	15
14	15
15	15
16	15
17	15
18	15
19	16
20	16
21	16
22	16
23	16
24	16
25	17
26	17
27	17
28	17
29	17

30	17
31	18
32	18
33	18
34	18
35	18
36	18
37	19
38	19
39	19
40	19
41	19
42	19
43	20
44	20
45	20
46	20
47	20
48	20
49	21
50	21
52	21
53	21
54	21
55	21
56	22
57	22
59	22
58	22

60	22
61	22
CONTACTS	23
Contact details	23
Telephones	23
Office hours	23
Address	23

SPECIFICATIONS

Overview

BUDDY DAVIS 61'

The legendary 61' BUDDY DAVIS is well known for its soft ride and spacious interior. Featuring a 4 stateroom/3 head layout makes this boat a perfect size for a live aboard or making extended trips.

Basic Information

Category: Sport Fisherman

Model Year: 1989

Year Built: 1989

Country: United States

Fly Bridge: Yes

Dimensions

LOA: 61' 0" (18.59m)

Beam: 18' 0" (5.49m)

Max Draft: 5' 8" (1.73m)

Speed, Capacities and Weight

Cruise Speed: 23 Kts. (26 MPH)

Max Speed: 28 Kts. (32 MPH)

Accommodations

Total Cabins: 4

Hull and Deck Information

Hull Material: Fiberglass

Engine Information

Engines: 2

Manufacturer: Detroit Diesel

Engine Type: Inboard

Fuel Type: Diesel

DETAILED INFORMATION

Accommodations

This vessel features the four stateroom, three head layout. The master is on the port side with an ensuite head while the VIP is located in the V-berth area with ensuite head. The companionway staterooms share a full head and shower and are located on the starboard side.

Salon

- Large L-shaped settee to port with storage underneath, leather upholstery
- 42" flat screen TV Vizio
- Teak interior woodwork
- Electrical panel cabinet
- L-shaped for dinette seats 6 with storage underneath, new leather upholstery
- Yamaha AV receiver
- Sony 6 disc CD changer
- Bose surround sound
- Cloth Curtains
- Updated soft goods
- New LED lighting
- 2015 new carpeting
- Teak table

Galley

- Teak and Holey Floors
- Stainless steel sinks
- Instant hot water
- Storage drawers and cabinets
- Recessed lighting
- Whirlpool cook top
- GE Convection microwave
- Updated undercounter 2 Subzero freezers
- Mirrored pantry doors
- Full size Whirlpool side by side refrigerator

Master Stateroom

- Queen size walkaround berth

- 2 nightstands
- Drawer storage under bed
- 2 Cedar-lined hanging lockers
- Large storage compartment over head
- Recessed lighting
- Private head access
- Teak mirrored dresser with (3) drawers
- Sharp 32" Flat screen TV

Guest Stateroom

- Side by Side Twin Bed
- Cedar-lined hanging lockers
- Vizio TV
- Private head access
- Recessed lighting
- Nightlight
- Hidden safe
- Drawer storage
- Private head access
- Night Stand with storage underneath

VIP Head

- Hatch for natural sunlight
- Teak Door
- Full sized shower
- Electric head Galley Made
- Corian countertops
- Mirrored vanity with storage
- Sink with storage below
- Towel racks

Guest Stateroom 2

- Over/under berths
- Hanging locker
- Day/guest head access

- Recessed lighting
- Dynex 20" TV
- Mirror counter w/ storage underneath

Aft starboard and stateroom

- Single berth
- Over head storage
- Hanging Locker
- Day head access
- Central vac system
- Reading Light
- Full Shower

Guest Head

- Teak shower floor
- Full sized shower
- Electric head Galley Made
- Corian countertops
- Mirrored vanity with storage
- Sink with storage below
- Towel racks
- Access to companionway and crew stateroom

Fly Bridge

- Teak helm
- Single lever controls
- (2) Teak ladder back helm chairs
- Large wrap around seating with storage below
- 3-sided enclosure
- 12 rod holders across aft rail
- Lockable rod storage
- Engine gauges
- Emergency shutdowns
- Ritchie compass
- Rupp outriggers
- Teaser Reels

- Gauges
- Electric Console

Electronics & Navigational Equipment

- (3) Garmin 1040 GPS
- Furuno 8 Mile Radar
- Furuno RD30
- Simrad AP24
- ACR Search Light
- ICOM 602 VHF
- Trim Tabs
- Intellian Satellite System
- Lemar Windlass
- Uniden UM625C

Engineer Room / Mechanical Equipment

- Detroit Diesel 16V92 twin engines
- AC/DC fuel transfer pumps
- AC/DC engine room lights
- Dedicated spare oil tank
- Engine gauges
- Batteries
- Updated Racor system (2 for each engine)
- (4) Cruisair compressors.
- Twin Kilo Pak 21KW
- Battery charger
- 360 Engine room cameras
- Fireboy System
- (2) Water Heaters

Cockpit

- Salon entrance
- Bridge access
- Engine room access
- Murry Bros ladderback fighting chair
- Rigging station
- 4 Drawer tackle center
- Port and starboard storage lockers

- 6 in gunnel Rod holders
- Lazarette access
- Transom door
- (2) Cablemasters, 50am cords replaced 2017
- (2) Drain scuppers
- (2) Aft cleats
- Teak deck and covering boards
- (2) Overhead deck lights
- Freshwater wash down
- Saltwater wash down
- Live bait well portable

Deck Equipment

- Teak toe rail
- Bow rail
- Pulpit
- Windlass
- Hand rails
- Fuel fill
- San Juan Top

Exclusions

- Fishing Gear
- Owner's Personal Items

Exclusions

Owner's personal belongings.

Disclaimer

The Company offers the details of this vessel or yacht in good faith but cannot guarantee or warrant the accuracy of this information nor warrant the condition of the vessel. A buyer should instruct his representatives, agents, or his surveyors, to investigate such details as the buyer desires validated. This vessel or yacht is offered subject to prior sale, price change, or withdrawal without notice.

PHOTOS

1



2



3



4



5



6



7



8



9



10



11



12



13



14



15



16



17



18



19



20



21



22



23



24



25



26



27



28



29



30



31



32



33



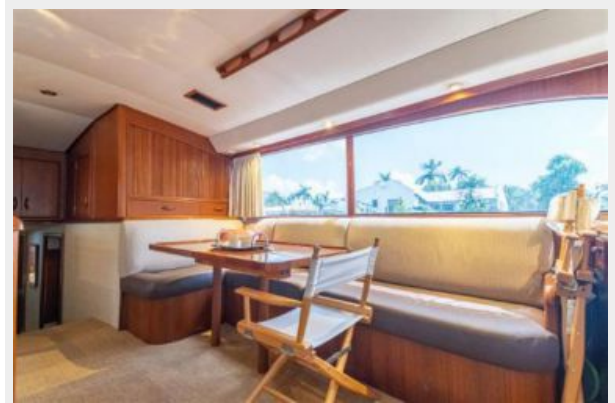
34



35



36



37



38



39



40



41



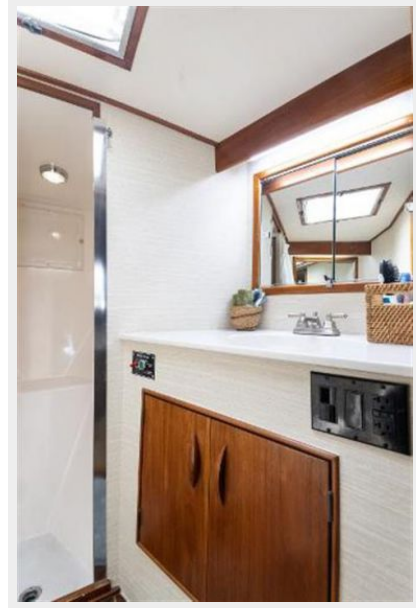
42



43



44



45



46



47



48



49



50



52



53



54



55



56



57



58



59



60



61



CONTACTS

Andrey Shestakov, leading yacht broker of the sales department of Shestakov Yacht Sales Inc. Shestakov Yacht Sales Inc., the official representative of the Miami/Fort Lauderdale FL headquarters.

Contact details

Email: andrey@shestakovyachtsales.com

Web: shestakovyachtsales.com/en/

Telephones

USA: +1(954)274-4435

Office hours

Monday – Saturday: **9:00 - 21:00** EDT

Sunday: **closed**

Address



Harbour Towne Marina, 850 NE 3rd St,
STE 213, Dania, FL 33004