

CRYSTAL BLUE — MAINSHIP



Судостроитель: MAINSHIP

Год постройки: 1998

Модель: Траулер

Цена: **ЦЕНА ЯХТЫ ПО ЗАПРОСУ**

Местонахождение: United States

Длина общая: 35' 0" (10.67m)

Ширина: 14' 2" (4.32m)

Макс. осадка: 3' 8" (1.12m)

Крейс. скорость: 8.5 Kts. (10 MPH)

Макс. скорость: 14 Kts. (16 MPH)

Купить **Crystal Blue — MAINSHIP** а также выбрать подходящую вам яхту из нашего каталога яхт вам поможет опытный яхтенный брокер Андрей Шестаков. На сегодняшний день компания **Shestakov Yacht Sales Inc.** имеет большое количество яхт в собственном списке продаж, а также тесно сотрудничает со всеми крупными яхтенными производителями по всему миру.

Для того чтобы купить яхту **Crystal Blue — MAINSHIP** а также проконсультироваться по любому вопросу связанному с покупкой, продажей, чартером яхт позвоните по телефону **+7(918)465-66-44**.

ОГЛАВЛЕНИЕ

ОГЛАВЛЕНИЕ	2
ХАРАКТЕРИСТИКИ	5
Обзор	5
Основная информация	5
Размеры	5
Скорость, вместимость и масса	5
Размещение	5
Корпус и палуба	6
Информация о двигателе	6
ПОДРОБНОЕ ОПИСАНИЕ	7
Mainship 350 Overview	7
Mainship 350 Walkthrough	8
Mainship 350 Main Cabin	8
Mainship 350 Galley	9
Mainship 350 Lower Helm	9
Mainship 350 Master Cabin	9
Mainship 350 Guest Cabin	10
Mainship 350 Head	10
Mainship 350 Cockpit	10
Mainship 350 Flybridge	11
Mainship 350 Electronics	12
Mainship 350 Electrical System	12
Mainship 350 Engine & Mechanical Equipment	13
Mainship 350 Deck Equipment	13
Mainship 350 Fire & Safety Equipment	13
Mainship 350 Exclusions	14
DISCLAIMER	14
Исключения	14

Отказ от ответственности	14
ФОТОГРАФИИ	15
2	15
1 Crystal Blue 1998 35' Mainship	15
3	15
4	15
5	16
6	16
7	16
8	16
9	17
10	17
11	17
12	17
13	18
14	18
15	18
16	18
17	19
18	19
19	19
20	19
21	20
22	20
23	20
24	20
25	21
26	21
27	21

28	21
29	22
30	22
31	22
32	22
33	23
34	23
35	23
36	23
37	24
38	24
39	24
40	24
41	25
42	25
43	25
44	25
45	26
46	26
КОНТАКТЫ	27
Контактная информация	27
Телефоны	27
Время работы	27
Адрес	27

ХАРАКТЕРИСТИКИ

Обзор

Crystal Blue is a modern trawler with classic trawler lines built on a modified-V hull with shallow, full length keel. Model is 350 however, her LOA is 37'10". Her 14' 2" beam makes this trawler's main cabin very spacious with a large cockpit, easy to navigate molded staircase to the flybridge that has plenty of space and seating to entertain a group of people. Powered with a single Caterpillar 3116 300 hp diesel engine, she has plenty of power to reach a top speed of 14 knots but cruises efficiently at 8-10 knots. This trawler is a Great Loop veteran, enjoyed the last 8 months on the East Coast, and is ready to go again.

Основная информация

Тип судна: Траулер

Модельный год: 1998

Год постройки: 1998

Страна: United States

Размеры

Длина общая: 35' 0" (10.67m)

Ширина: 14' 2" (4.32m)

Макс. осадка: 3' 8" (1.12m)

Трапы: 17' 0" (5.18m)

Скорость, вместимость и масса

Крейс. скорость: 8.5 Kts. (10 MPH)

Макс. скорость: 14 Kts. (16 MPH)

Вместимость воды: 130 Gallons

Вместимость сточного бака: 30 Gallons

Объем топливного бака: 300 Gallons

Размещение

Всего кают: 2

Всего коек: 2

Всего ком. состава: 1

Корпус и палуба

Материал корпуса: Fiberglass

Информация о двигателе

Двигатели: 1

Производитель: Caterpillar

Модель: 3116

Тип двигателя: Inboard

Тип топлива: Diesel

ПОДРОБНОЕ ОПИСАНИЕ

Mainship 350 Overview

Crystal Blue is a delightful, modern trawler with classic trawler lines but built on a modified-V hull with shallow, full length keel. Her 14' 2" beam makes this trawler's main cabin very spacious with plenty of room for a full galley, lower helm, desk and seating/dining area. Two cabins, each with a queen berth makes sleeping for four very comfortable and the single head is roomy and contains a large separate shower stall. With a large cockpit, easy to navigate molded staircase to the flybridge, plenty of space and seating to entertain a group of people and a well equipped upper helm this boat has everything a modest sized liveaboard needs. Powered with a single Caterpillar 3116 300 hp diesel engine, she has plenty of power to reach a top speed of 14 knots but cruises efficiently at 8-10 knots. All fiberglass decks reduce maintenance while the interior maintains a nice balance of wood.

Recently Completed Repairs/Maintenance

Sep-19 Replaced Generator battery AGM

Sep-19 Replace upper helm VHF and antennae

Sep-19 Flushed and replaced hydraulic steering fluid

Sep-19 Installed (2) carbon monoxide detectors, (1) smoke detector

Sep-19 Replaced center hull sump pump and flapper

Oct-19 Replaced house fresh water pump

Nov-19 Replaced (2) Stern Thruster batteries AGM

Nov-19 Replaced main engine seawater intake impeller

Nov-19 Replaced stern thruster control box, improved water seal

Jan-20 Replaced anchor light

Mar-20 Replaced all stove burners

Apr-20 Replaced house batteries - (2) Napa 8D 7271FT Heavy Duty CCA 1,425A, low maintenance

Jun-20 Replaced engine mounts - engine hours - 3,262

Jun-20 Inspected and cleaned air filter

Aug-20 Replace bow 30 amp shoreline electrical receptacles

Aug-20 Paint hull - 2 coats Ultima SR 60 waterline to keel, sanded/smoothed

Aug-20 Replaced all zinc anodes

Aug-20 Replaced bow and stern thruster propellers

Aug-20 Replaced above water line thru-hulls on starboard side

Aug-20 Applied PropSpeed to propeller, struts and shaft

Aug-20 Applied barnacle barrier to trim tabs and rudder

Sep-20 Replaced generator seawater intake impeller

Sep-20 Replaced generator seawater strainer basket and gasket

Mainship 350 Walkthrough

Access to the cockpit can be obtained via the swim platform and transom door or over the gunwales and down a few steps on either side of the cockpit or forward on the starboard side to the lower helm wing door. The forward deck can be reached from the cockpit via comfortable walkways on port and starboard. Once in the cockpit, a sliding door leads to the main cabin and a molded spiraling staircase to starboard leads up to the flybridge. Access to the main cabin is made easy through the large, sliding glass door in the cockpit. Once inside the main cabin, the L shaped galley is to port, the companionway to the berthing compartments is centered forward and the lower helm, seating/dining area and desk are to starboard. Down the companionway the berthing compartment is laid out with the guest cabin to port, head to starboard and master cabin forward in the bow. On the flybridge is a large open deck aft and forward are bench seats to port and starboard, a fold out table between them and a single captains chair at the flybridge helm forward. Access to the engine/mechanical compartment is made easy through large hatches in the main cabin sole and lazarette.

Mainship 350 Main Cabin

The 14' 2" beam of Crystal Blue provides a large open floor plan salon/galley/helm area with a 6' 6" height clearance. The sole was replaced (01/2017) with Allure Teak Resilient Plank flooring for easy cleaning and maintenance and is covered with a large blue with white anchor area rug. Hinged panels in the sole provide access to the engine compartment; there are ladder steps into the engine compartment. The electrical panel is inside the aft sliding door to starboard. Large windows forward, the starboard wing door, and the screened aft sliding door provide natural lighting and fresh airflow to the space. The center panel of the windshield opens, and there are two windshield wipers. Eggshell mesh covers fit over the outside of the windshield, and one on the inside of the center panel. The salon seating area is starboard, and features two easy to clean free-standing chairs with matching ottomans (New 02/2017). An easily managed folding table is

between the chairs. A built-in desk area with a Corian surface is aft to starboard. The entertainment center, featuring a Sceptre flat screen TV is aft to port, can be hinged up out of the way, and pulled down for viewing. Grab rails are mounted on the salon ceiling.

Mainship 350 Galley

The galley to port on Crystal Blue features everything needed for extended cruising, including:

- Corian counters Princess three burner electric stove and oven, with a folding top featuring a cutting board
- A LED light over the stove
- Nova Kool three quarter height refrigerator with separate freezer compartment below
- (12V/120) GE Turntable microwave oven
- Black & Decker Spacemaker coffee maker
- Pull out racks in some cabinets for ease of storage
- Mounted spice rack
- Mounted mug rack
- Mounted plate storage rack
- Mounted knife rack
- Nickel door handles added
- Removable Corian sink cover over ½ of the sink

Mainship 350 Lower Helm

The lower helm of Crystal Blue is to starboard and includes:

- Garmin GPSmap 741xs
- Standard Horizon Eclipse DSC+
- VHF marine radio
- VDO System Guages
- Remote Control for bow and stern thruster
- Saturn AquaMeter Compass
- Trim tab controls
- Raymarine tri-data control (Out Of Service)
- Director's chair for Captain

Mainship 350 Master Cabin

The master stateroom on Crystal Blue is located all the way forward in the bow with a 6' 4" height clearance. The centered queen-size berth has walk-around access, reading lights, courtesy lights, under bed storage drawers, and hanging lockers to port and starboard. There is a private entrance to the head to starboard, which makes the master stateroom en-suite. The sole is

carpeted on the steps, but laminate on the access. Two portlights and an overhead hatch provide natural light and airflow. Several doors have full length mirrors. There are numerous wall hooks mounted around the stateroom.

The master stateroom mattress on the Crystal Blue was replaced with a 7' custom marine mattress (01/2018). There is additional storage under the mattress.

Mainship 350 Guest Cabin

The guest cabin is to port, aft of the master cabin on Crystal Blue and features a queen-size berth, storage under the mattress, a hanging locker, reading lights, a clever storage cabinet with clear doors, numerous mounted wall hooks, and a storage nook next to the berth. There is a large shelf on top of the hanging locker for added storage. Just over half of the berth is tucked under the galley floor but there is plenty of open space (6'4" clearance) so that guests won't feel confined. A portlight and overhead hatch provide plenty of natural light and airflow. The sole is Allure Teak Resilient Plank flooring.

Mainship 350 Head

The bright and modern head features a fresh water Vacu Flush toilet, molded vanity with sink, storage cabinets and a large circular mirror over the vanity. The large shower stall with a 6' 6" clearance, has glass accordion doors and a wall mounted/handheld shower head, which provide a very comfortable space to shower. A portlight and overhead hatch with a solar fan provide natural light and airflow. Access is via a private door from the master cabin and a second door from the companionway, for guests and day use. Main door has a full length mirror mounted. There is a plastic holding tank, as well as a macerator.

Mainship 350 Cockpit

Boarding *Crystal Blue* is via the swim platform with a centered transom door, or over the gunwales on either the port or starboard side, and down a few removable steps that can be used on either side. The large cockpit has a hardtop roof with rod holders and a removable shade curtain across the stern. The molded staircase to the flybridge on the starboard side is easy to navigate. The foredeck is reached via comfortable walkways on both the port and starboard sides. The large screened, sliding door provides entry to the main cabin.

A large hatch just outside the sliding door leads to a mechanical space with access to the generator, water tanks, battery switches and shaft seal. A smaller lazarette further aft provides access to the aft end of the generator, stern thruster and its battery, steerage, and storage space. Two additional storage compartments are in the transom port and starboard of the centered door.

A portable propane Weber BBQ grill sits on the transom during use, and is attached to a fiberglass propane tank with fuel level sights for easy grilling. A wooden flagpole is mounted on the transom. The ship's bell is mounted next to the main cabin door, at the bottom of the flybridge steps.

An Atkins & Hoyle crane with a wired control is mounted on the transom, aft to port, which makes loading and unloading the dinghy onto the swim platform very convenient and user friendly. The transom has two hawse pipes and cleats for extra secure line handling.

Mainship 350 Flybridge

The large flybridge and sundeck provides a great place for navigating, entertaining, or relaxing. Tall railings around the sundeck and stairwell provide extra safety and security. Currently, there is removal netting around the open area, for pet safety.

The flybridge is enclosed with a navy blue Sunbrella bimini top, an eisenglass front window, and navy blue mesh screens on three sides (New 02/2017). There are two large bench seats on either side of the flybridge, with backrests on the end that turn them into chaise lounges, and they have snap on covers. There is abundant storage beneath and behind the bench seats. A fold up table, with storage in the center, is between the bench seats, and can be used as a dinette. A single Pompanette captain's chair (New 09/2018) is centered at the flybridge helm. A small, removable table is mounted starboard of the captain's chair. The helm has a full storage cover, and is outfitted with the following equipment:

Garmin 8212

Garmin AIS600 Automatic Identification System Transceiver

Garmin GXM52 Sirius Marine Transceiver

Garmin B60 Transducer with Temperature for 8212 and 741X

Garmin GMR24xHD Radar

Garmin GSD22 Sounder Sonar

Standard Horizon Eclipse DSC+ VHF marine radio

Yacht Thruster bow and stern thruster control

VDO System Guages

Rule High water alarm

Battery Monitor BM-1

12V electrical outlets (2) 12v aux plugs and (2) USB added by current owner

Simrad AP-11 Autopilot

Windlass controls

Saturn AquaMeter Compass

Trim tab controls

Raymarine tri-data control (Out Of Service)

A deck box is located along the aft rail of the sundeck and two white folding deck chairs are included with the boat. A short, foldable mast is located in the center of the sundeck. A Lifesling is mounted on the sundeck railing.

Mainship 350 Electronics

- Garmin 8212
- Garmin GPSMap 471xs chartplotter
- Garmin GMR24xHD Radar
- Garmin AIS600 Automatic Identification System Transceiver
- Garmin GXM52 Sirius Marine Transceiver
- Garmin B60 Transducer with Temperature for 8212 and 741X
- Garmin GSD22 Sounder Sonar
- (2) Standard Horizon Eclipse DSC+ VHF marine radio
- Yacht Thruster bow and stern thruster control (Upper Helm)
- Remote Control for bow and stern thruster (Lower Helm)
- Simrad AP-11 Autopilot
- Kisae DC/AC 2000W True SineWave Inverter
- Rule High water alarm
- Battery Monitor BM-1 12V electrical outlets (2)
- 12v aux plugs and (2) USB added by current owner (Upper helm)
- (2) USB (Lower helm)
- Windlass controls
- Trim tab controls
- Island Time Marina WiFi System with wireless router
- Stereo speakers Wiring for stereo – No stereo currently installed
- (2) Raymarine tri-data control (Out Of Service)

Mainship 350 Electrical System

- 8 kw Onan Generator with 775 hours
- 12 vdc / 110 vac power system
- Dual 30 amp shore power connectors

- 2 - 50' 30 amp shore power cords
- 50 amp splitter

Mainship 350 Engine & Mechanical Equipment

This trawler features the following engine and mechanical equipment:

- Single Caterpillar 3116 300 hp marine diesel main engine (3,458 hours and has averaged 3 GPH)
- ZF gearbox
- Racor diesel fuel filter with vacuum gauge
- Bow Thruster 5HP
- SidePower Stern Thrusters (installed 03/2017)
- Oil exchange system
- 2 - D starting and house batteries
- 2 - Air Marine Systems 16,000 BTU air conditioners model VCP16

- 6 Gallon Water heater (New 04/2020)

Mainship 350 Deck Equipment

Crystal Blue features the following deck equipment:

- West Marine 10' RIB dinghy with cover
- Tohatsu MFS6CDS 6 hp short shaft 4 stroke motor (04/2017)
- Bow Pulpit
- Delta main anchor with snubber and 230' chain
- Spare Delta anchor
- Spare Danforth anchor
- Lofrans Project capstan with foot switches on foredeck
- Safety rails and stainless steel deck fittings
- Fresh water wash down on bow and stern

Mainship 350 Fire & Safety Equipment

Crystal Blue features the following fire and safety equipment:

- Halon fire suppression system
- (4) Portable fire extinguishers (New 10/2019)
- (2) Carbon Monoxide detectors originals, (2) Carbon Monoxide detectors (New 10/2019)
- Full walk-around side decks with waist high rails
- Lifesling Life jackets (2 Belt style, numerous orange)

- Flares
- Electric horn
- 2019 USCG Safety Inspection Certification and Decal

Mainship 350 Exclusions

- Owner's personal belongings
- Bed linens, towels, toiletries

DISCLAIMER

The Company offers the details of this vessel in good faith but cannot guarantee or warrant the accuracy of this information nor warrant the condition of the vessel. A buyer should instruct his agents, or his surveyors, to investigate such details as the buyer desires validated. This vessel is offered subject to prior sale, price change, or withdrawal without notice.

Исключения

При продаже яхты исключаются личные вещи владельца.

Отказ от ответственности

Компания предоставляет описание судна или яхты добросовестно, но не может гарантировать точность этой информации, а также не ручается за техническое состояние. Покупатель должен проинструктировать своих агентов или оценщиков исследовать представленную информацию более подробно, по собственному желанию. Продажа судна или яхты, изменение цены или снятие с продажи будет происходить без предварительного уведомления.

ФОТОГРАФИИ

1 Crystal Blue 1998 35' Mainship



2



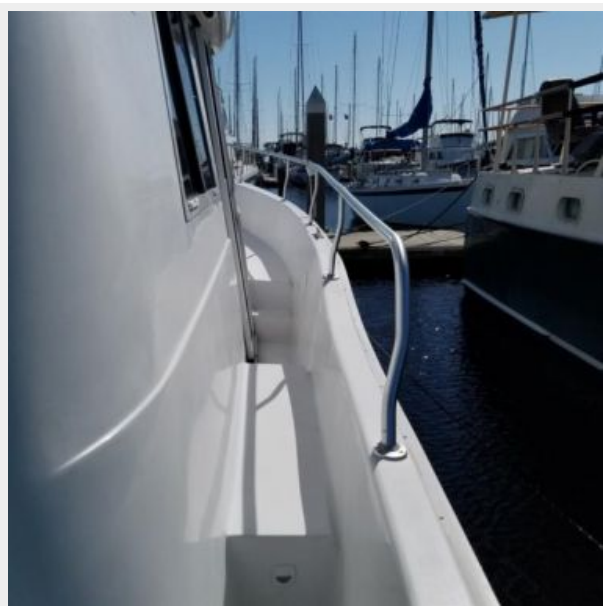
3



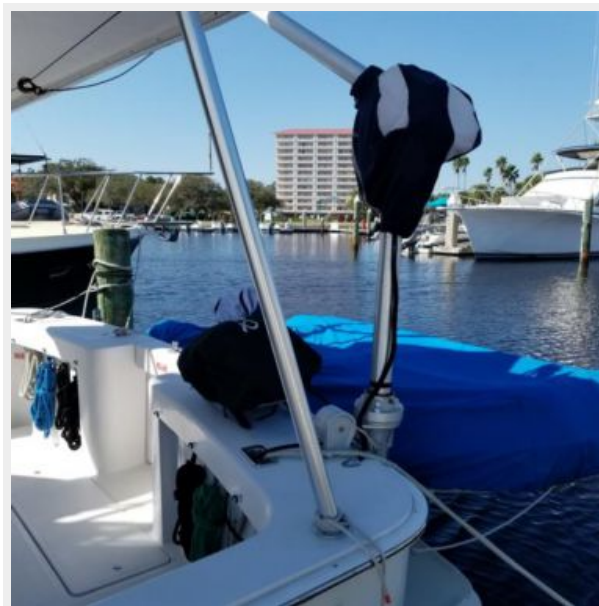
4



5



6



7



8



9



10



11



12



13



14



15



16



17



18



19



20



21



22



23



24



25



26



27



28



29



30



31



32



33



34



35



36



37



38



39



40



41



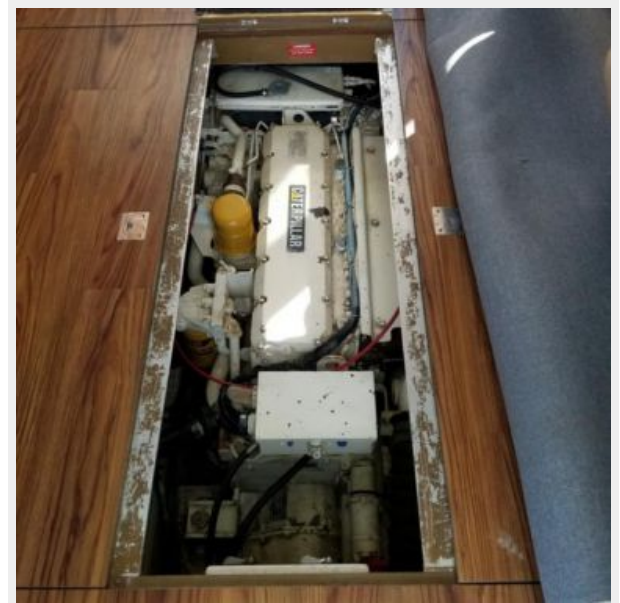
42



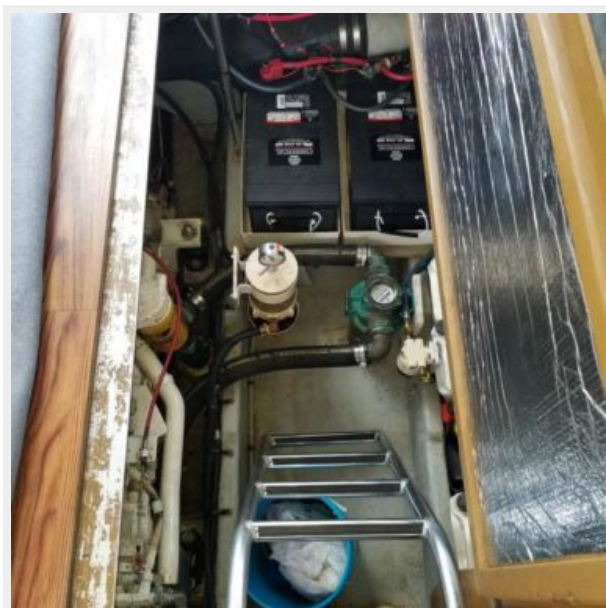
43



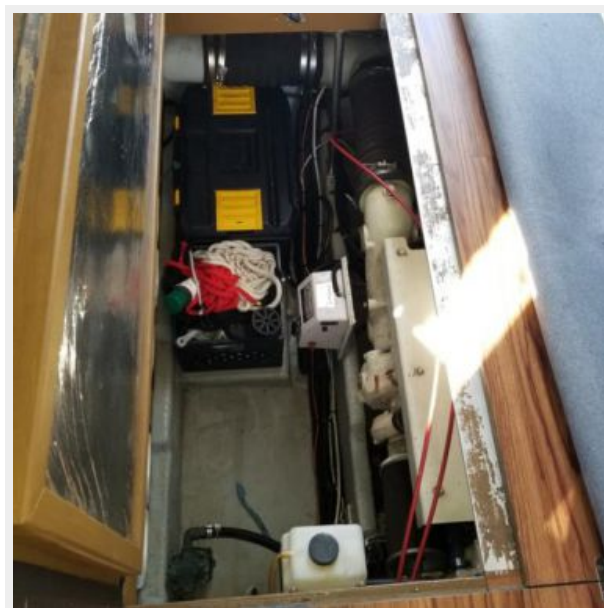
44



45



46



КОНТАКТЫ

Андрей Шестаков (Andrey Shestakov) – ведущий яхтенный брокер отдела продаж яхт и судов компании Shestakov Yacht Sales Inc. Официальный представитель Shestakov Yacht Sales Inc. для русскоговорящих клиентов в центральном офисе компании в Майами/Форт Лодердейл/Флорида/США.

Контактная информация

Email: andrey@shestakovyachtsales.com

Web: shestakovyachtsales.com

Телефоны

Краснодарский край: **+7(918)465-66-44**

США, Майами, Флорида: **+1(954)274-4435**

Время работы

Понедельник – Суббота: **9:00 - 21:00**
EDT

Воскресенье: **Закрето**

Адрес



Harbour Towne Marina, 850 NE 3rd St,
STE 213, Dania, FL 33004