

PALGREMAT — CUSTOM LINE



Builder: CUSTOM LINE

Year Built: 2017

Model: Motor Yacht

Price: PRICE ON APPLICATION

Location: Italy

LOA: 92' 11" (28.31m)

Beam: 23' 0" (7.00m)

Min Draft: 7' 3" (2.20m)

Max Draft: 0' 0" (0.00m)

Cruise Speed: 13 Kts. (15 MPH)

Max Speed: 16 Kts. (18 MPH)

Our experienced yacht broker, Andrey Shestakov, will help you choose and buy a yacht that best suits your needs **Palgremat — CUSTOM LINE** from our catalogue. Presently, at Shestakov Yacht Sales Inc., we have a wide variety of yachts available on our sale's list. We also work in close contact with all the big yacht manufacturers from all over the world.

If you would like to buy a yacht **Palgremat — CUSTOM LINE** or would like help answering any questions concerning purchasing, selling or chartering a yacht, please call **+1(954)274-4435**

TABLE OF CONTENTS

TABLE OF CONTENTS	2
SPECIFICATIONS	4
Overview	4
Basic Information	4
Dimensions	4
Speed, Capacities and Weight	4
Accommodations	5
Hull and Deck Information	5
Engine Information	5
DETAILED INFORMATION	6
Technical specifications	6
Exclusions	8
Disclaimer	8
PHOTOS	10
Jacuzzi on the sundeck	13
main deck saloon	13
main deck saloon	14
main deck saloon 5	14
main deck saloon	14
Owner's cabin	14
tv	14
View from owner's cabin	14
Owner's head	15
Upper deck saloon	15
TV and wine cooler on the upperdeck saloon	16
Galley	18
CONTACTS	20
Contact details	20

Telephones	20
Office hours	20
Address	20

SPECIFICATIONS

Overview

The 28-metre Navetta M/Y PALGREMAT built by Custom Line was delivered to her owner in 2018. PALGREMAT has only ever been privately used and professionally maintained by her crew. The chic and contemporary interiors can accommodate up to 10 guests in five staterooms, all with en-suite bathroom facilities. The main and upper deck saloon features full-height windows providing panoramic vistas and plenty of natural light. The impressive deck areas include a sundeck boasting a Jacuzzi and sun pads. The versatile aft deck features a large swimming platform that can also be used as a pier for the tender or the water toys. PALGREMAT represents an excellent opportunity for anyone looking for a tri-deck yacht, recently built, with low fuel consumption, well maintained and fully equipped.

Basic Information

Category: Motor Yacht

Model Year: 2018

Year Built: 2017

Country: Italy

Dimensions

LOA: 92' 11" (28.31m)

Beam: 23' 0" (7.00m)

Min Draft: 7' 3" (2.20m)

Max Draft: 0' 0" (0.00m)

MFG Length: 78' 9" (23.98m)

Speed, Capacities and Weight

Cruise Speed: 13 Kts. (15 MPH)

Cruise Speed Range: 1200

Max Speed: 16 Kts. (18 MPH)

Displacement: 216800 Pounds

Water Capacity: 528.344104 Gallons

Holding Tank: 264.172052 Gallons

Fuel Capacity: 3302.15065 Gallons

Fuel Consumption: 23.77548468 Gallons

Accommodations

Total Cabins: 5

Sleeps: 10

Total Heads: 6

Crew Cabin: 1

Crew Berths: 5

Crew Heads: 3

Hull and Deck Information

Hull Material: GRP

Deck Material: Teak

Exterior Designer: Zuccon International
Project

Interior Designer: Zuccon International
Project

Engine Information

Engines: 2

Manufacturer: MAN

Model: 1200 V8

Engine Type: Inboard

Fuel Type: Diesel

DETAILED INFORMATION

Technical specifications

Main Characteristics

Name	Palgremat	
Type	Motor Yacht	
Year	2017 – delivery July 2018	
Flag	Italy	
L _{OA}	28.31 m	92.88 ft
L _{WL}	23.98 m	78.67 ft
Range	1200 nm at 10 knots	
Beam	7 m	22.9 ft
Draft	2.2 m	7.2 ft
Hull Material	GRP	
Superstructure Material	GRP	
Hull Color	White	
Superstructure Color	White	
Hull Configuration	Semi-Displacement	
Built by	Ferretti yachts – Custom Line	
Exterior Designer	Zuccon International Project	
Interior Designer	Zuccon International Project	
Staterooms	5	
Sleeps	10	
Crew Quarters	1	
Crew Berths	5	
Capacities		
Cruise Speed	13.0 kn	
Max. Speed	16.0 kn	
Fuel Capacity	12,500 l	3,302 US Gallons
Water Capacity	2,000 l	528 US Gallons
Black Water Capacity	1000 l	264 US Gallons
Consumtion 90 l/h at 10 Knots		
Machinery		
Engine	2x Man rated 1200hp @ 2,300 rpm	
Engine Model	1200 V8	
Engine Hours	950 h	

Fuel	Diesel
Exhaust System	Wet
Propulsion	Direct shaft-line
Bow & Stern Thrusters	40kw each
Stabilizers	Abt TRACK zero speed
Generators	28 kW (1985h) & 28 kW (1985h) Kohler
Shore Power	24V – 220V
Air Conditioning	Tropical option
Watermaker/Water treatment	Idromar 360 l/H

Accommodations

Owner/Guests	5 cabins – Owner's cabin, VIP, 2 , 2	
Crew Cabins	3	5 crew members
Salon	2	Main and upper deck
Dining Area	2	Main deck, upper deck

Galley & Laundry Equipment

Dishwashers	Bosch	Galley
Fridges	Drena	Galley
Ice Makers	Yes	Galley
Additional fridges	Bosch	Main deck, upper deck
Oven	Siemens	Galley
Cookers	Siemens	Galley
Grill	Yes	Upper Deck
Wincooler	Isoterm	Galley
Washing Machine	Hoover	Laundry
Drying Machine	Candy	Laundry

Communication

SAT-Phone & Data	Tracvision
SAT-TV	Tracvision
Terrestrial TV System	Yes
Intercom System	Yes
WiFi	Yes
VHF	Simrad

Navigation

Radar
 Satellite Compass
 Autopilot
 Sounder
 GPS
 Navnet
 AIS
 Navigation System
 Wind Instruments
 Wheelhouse Displays
 Navtex receiver
 Camera for Night Vision

A/V & Entertainment System

TV LCD in all cabins Saloons and galley

Deck Equipment

Anchor	Yes, chain 130m diam.13 mm
Capstan	Yes
Warping winches	Yes
Swimming Platform	Yes
Passerelle	Yes

Security & Safety

Cameras	In the aft deck and engine room
Extra	Safe
Smoke Detectors	Yes
EPIRBS	Yes
Life Rafts	Yes

Tender & Toys

Tender	Williams turbojet 445 m
--------	-------------------------

Exclusions

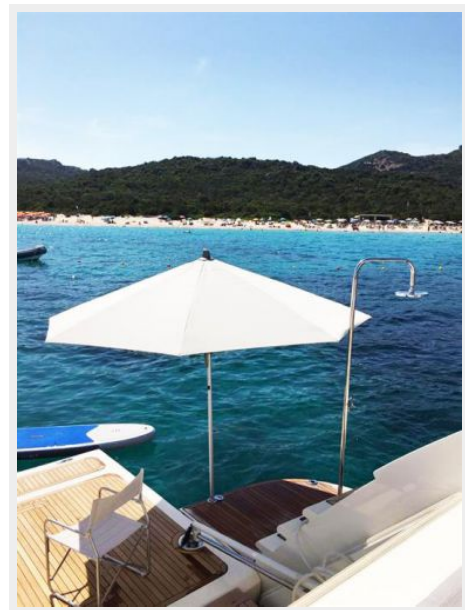
Owner's personal belongings.

Disclaimer

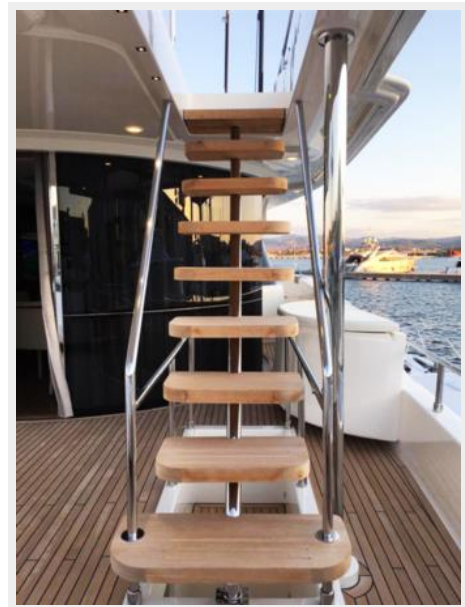
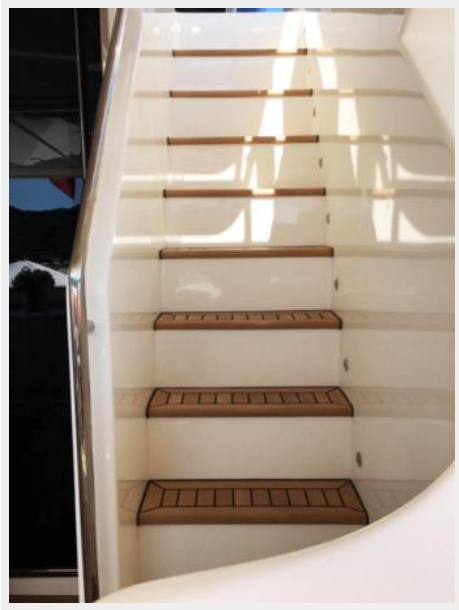
The Company offers the details of this vessel or yacht in good faith but cannot guarantee or warrant the accuracy of this information nor warrant the condition of the vessel. A buyer should

instruct his representatives, agents, or his surveyors, to investigate such details as the buyer desires validated. This vessel or yacht is offered subject to prior sale, price change, or withdrawal without notice.

PHOTOS







Jacuzzi on the sundeck



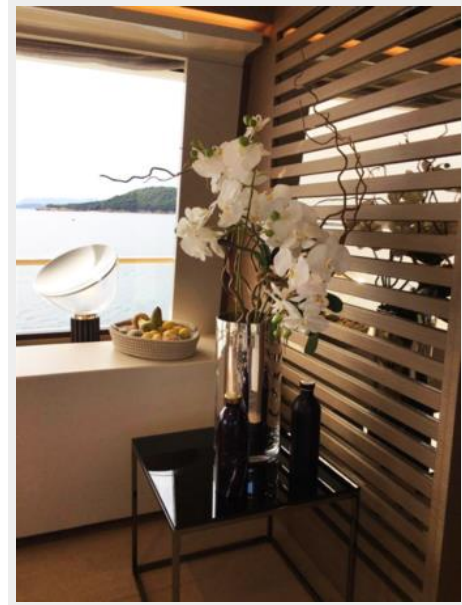
main deck saloon



main deck saloon 5



main deck saloon



main deck saloon



Owner's cabin



tv



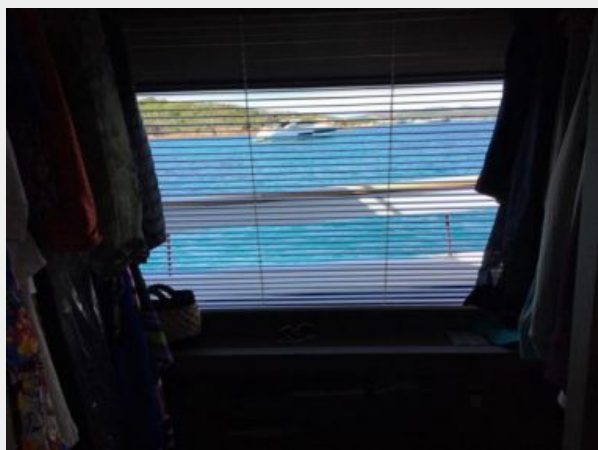
View from owner's cabin



Owner's head

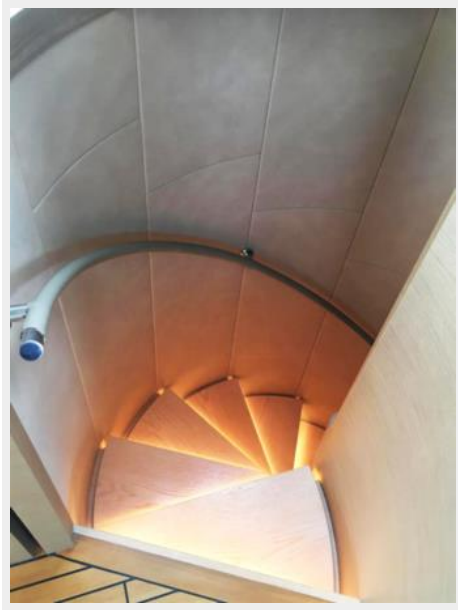


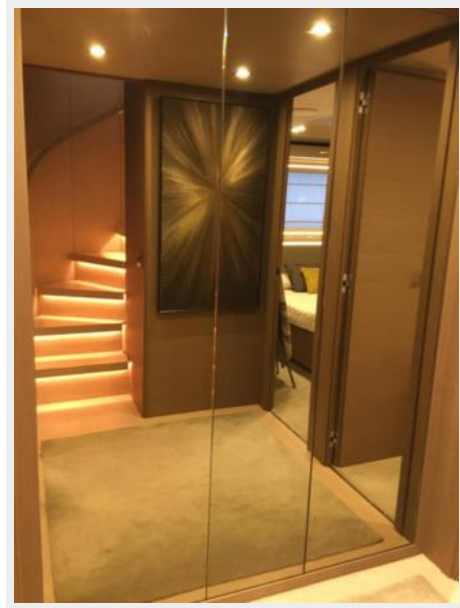
Upper deck saloon



TV and wine cooler on the upperdeck saloon







Galley





CONTACTS

Andrey Shestakov, leading yacht broker of the sales department of Shestakov Yacht Sales Inc. Shestakov Yacht Sales Inc., the official representative of the Miami/Fort Lauderdale FL headquarters.

Contact details

Email: andrey@shestakovyachtsales.com

Web: shestakovyachtsales.com/en/

Telephones

USA: +1(954)274-4435

Office hours

Monday – Saturday: **9:00 - 21:00** EDT

Sunday: **closed**

Address



Harbour Towne Marina, 850 NE 3rd St,
STE 213, Dania, FL 33004