

## N/A — CARVER VOYAGER



**Builder:** Carver Voyager

**LOA:** 52' 0" (15.85m)

**Year Built:** 2007

**Beam:** 15' 4" (4.67m)

**Model:** Motor Yacht

**Max Draft:** 4' 9" (1.45m)

**Price:** PRICE ON APPLICATION

**Location:** United States

Our experienced yacht broker, Andrey Shestakov, will help you choose and buy a yacht that best suits your needs **N/A — Carver Voyager** from our catalogue. Presently, at Shestakov Yacht Sales Inc., we have a wide variety of yachts available on our sale's list. We also work in close contact with all the big yacht manufacturers from all over the world.

If you would like to buy a yacht **N/A — Carver Voyager** or would like help answering any questions concerning purchasing, selling or chartering a yacht, please call **+1(954)274-4435**

# TABLE OF CONTENTS

TABLE OF CONTENTS	2
SPECIFICATIONS	5
Overview	5
Basic Information	5
Dimensions	5
Speed, Capacities and Weight	5
Accommodations	5
Hull and Deck Information	6
Engine Information	6
DETAILED INFORMATION	7
Interior Features	7
Exterior Features	8
Exclusions	9
Disclaimer	9
PHOTOS	10
7637075_20201026133523061_1_LARGE	10
7637075_20201026133527968_1_LARGE	10
7637075_20201026133533051_1_LARGE	10
7637075_20201026133538044_1_LARGE	10
7637075_20201026133543485_1_LARGE	10
7637075_20201026133548409_1_LARGE	10
7637075_20201026133553230_1_LARGE	11
7637075_20201026133558252_1_LARGE	11
7637075_20201026133603380_1_LARGE	11
7637075_20201026133608387_1_LARGE	11
7637075_20201026133613260_1_LARGE	11
7637075_20201026133618192_1_LARGE	11
7637075_20201026133623074_1_LARGE	12

---

7637075_20201026133629760_1_LARGE	12
7637075_20201026141535801_1_LARGE	12
7637075_20201026141545426_1_LARGE	12
7637075_20201026141554593_1_LARGE	12
7637075_20201026141604375_1_LARGE	12
7637075_20201026141614665_1_LARGE	13
7637075_20201026141623967_1_LARGE	13
7637075_20201026141632910_1_LARGE	13
7637075_20201026141643238_1_LARGE	13
7637075_20201026141652846_1_LARGE	13
7637075_20201026141702851_1_LARGE	13
7637075_20201026141712829_1_LARGE	14
7637075_20201026141717739_1_LARGE	14
7637075_20201026141723457_1_LARGE	14
7637075_20201026141731604_1_LARGE	14
7637075_20201026141740434_1_LARGE	14
7637075_20201026141749037_1_LARGE	14
7637075_20201026141758310_1_LARGE	15
7637075_20201026141806822_1_LARGE	15
7637075_20201026141822777_1_LARGE	15
7637075_20201026141831001_1_LARGE	15
7637075_20201026143059343_1_LARGE	15
7637075_20201026143109545_1_LARGE	15
7637075_20201026143119834_1_LARGE	16
7637075_20201026143130798_1_LARGE	16
7637075_20201026143141364_1_LARGE	16
7637075_20201026143150586_1_LARGE	16
7637075_20201026143200471_1_LARGE	16
7637075_20201026143213717_1_LARGE	16

---

---

7637075_20201026143223503_1_LARGE	17
7637075_20201026143234589_1_LARGE	17
7637075_20201026143244927_1_LARGE	17
7637075_20201026143254558_1_LARGE	17
7637075_20201026143303325_1_LARGE	17
7637075_20201026143312689_1_LARGE	17
7637075_20201026143831368_1_LARGE	18
7637075_20201026143841003_1_LARGE	18
7637075_20201026143901216_1_LARGE	18
7637075_20201026143851308_1_LARGE	18
7637075_20201026143911138_1_LARGE	18
7637075_20201026143921184_1_LARGE	18
CONTACTS	19
Contact details	19
Telephones	19
Office hours	19
Address	19

---

# SPECIFICATIONS

---

## Overview

---

Look no further as this is the cleanest and best cared for 52' Voyager on the market!! The Craver 52 Voyager boasts a tremendous amount of interior volume offering an exceptional feel of a much larger vessel in a smaller package She features very low hour Volvo Diesel engines that have benefited from an open checkbook maintenance policy. Equipped with bow and stern thrusters allowing easy maneuverability especially with her newly equipped Yacht Controller that will make any owner/operator look like an advanced captain! Fully air conditioned bridge with foldable isinglass allows for your choice of open air or the comfort of an enclosure with your preference of temperature. NEW Garmin electronics in 2019, and New Flybridge AC installed October 2020!

## Basic Information

---

**Category:** Motor Yacht

**Model Year:** 2007

**Year Built:** 2007

**Country:** United States

## Dimensions

---

**LOA:** 52' 0" (15.85m)

**Beam:** 15' 4" (4.67m)

**Max Draft:** 4' 9" (1.45m)

## Speed, Capacities and Weight

---

**Water Capacity:** 200 Gallons

**Fuel Capacity:** 800 Gallons

## Accommodations

---

**Total Cabins:** 3

**Total Heads:** 3

---

## Hull and Deck Information

---

**Hull Material:** Fiberglass

## Engine Information

---

**Engines:** 2

**Manufacturer:** Volvo

**Model:** D-9A2D

**Engine Type:** Inboard

**Fuel Type:** Diesel

---

# DETAILED INFORMATION

---

## Interior Features

---

### Salon

- Large Sliding Glass Cockpit Door Leading Into Interior Salon
- L Shaped Sofa To Starboard Side
- Teak & Holy Flooring Through Out All Of Main Level
- LED TV port side ahead of Salon entry
- Bose Entertainment Surround Sound System
- Multi Color Salon Lighting Including White Surround Lights And Blue LED Center Lights

### Galley

- Over Sized Galley With Island Style Seating And Three Bar Stools Ahead Of Salon
- Wine Chiller Ahead Of Salon Sofa Underneath Galley Countertop
- Extended Storage Cabinetry Throughout Entire Galley Over Head And Underneath
- Split Refrigerator/Freezer
- Microwave Oven Above Refrigerator/Freezer
- Multi Burner Stove Top With Extractor Vent
- Multicolor Lighting Over Head Including White Lighting And Red Lighting Above Sink

### Pilot House

- Center Mounted Helm Station With Single Captains Seat And Full Controls
- New Garmin Electronics
- Large L Shaped Sofa Port Side With LED TV Wall Mounted Starboard Side
- Center Mounted Staircase Behind Captains Seat Leading To Flybridge
- Watertight Side Door Leading To Starboard Side Exterior Companion Way
- Stair Case To Lower Level Staterooms Starboard Side Of Pilothouse

### Master Stateroom

- Full Beam Master Stateroom With Queen Sized Island Berth Starboard Side
- Single Basin Sink With Split Head & Shower/Tub Port Side
- Side By Side Washer & Dryer
- LED TV Wall Mounted Ahead Of Island Berth
- Large Hanging Locker Port Side Next To Master Stateroom Entrance
- Extended Storage Throughout Entire Stateroom

### Guest Cabin

- Over Under Twin Bunk Beds With Pull Man Style Collapsible Top Bunk

- Wall Mounted Flat Panel TV
- Extended Storage Throughout
- Starboard & Port Port-Holes

### **VIP Forward Cabin**

- Center Mounted Queen Island Berth
- Private Access To Guest Head
- Extended Storage Through Out
- Wall Mounted LED TV
- Hanging Locker Port Side
- Starboard & Port Port-Holes

### **Guest/Day Head**

- Access Through Companion Way Starboard Side
- Single Basin Sink With Vanity Mirror & Blue LED Accent Lighting
- Full Sized Separate Standing Shower Stall

## **Exterior Features**

---

### **Aft Deck**

- NEW Sea-Deck Flooring
- Center Access Engine Room Hatch
- Free Standing Teak Foldable Chairs With Teak Table
- Staircase To Flybridge Starboard Side
- Hydraulic Hi/Lo Swim Platform With AB Center Console Tender

### **Fly Bridge**

- NEW Sea-Deck Flooring Installed
- New Flybridge AC Unit Installed
- Full Isinglass Fly Bridge Enclosure
- New Garmin Electronics & Full Systems On Flybridge Helm
- Helm Station Port Side With Single Captains Seat
- U-Shaped Dinette Behind Helm Station
- Starboard Bench Seating Next To Helm



- Door Hatch For Interior Access To Pilothouse
- Bench Seating Aft Of Flybridge

## **Bow**

- Sun Pad Mid Ship
- Electric Windlass
- Port & Starboard Companion Ways To Aft Deck
- Stainless Steel Wrap Around Bow Rail

## **Exclusions**

---

Owner's personal belongings.

## **Disclaimer**

---

The Company offers the details of this vessel or yacht in good faith but cannot guarantee or warrant the accuracy of this information nor warrant the condition of the vessel. A buyer should instruct his representatives, agents, or his surveyors, to investigate such details as the buyer desires validated. This vessel or yacht is offered subject to prior sale, price change, or withdrawal without notice.

# PHOTOS

7637075\_20201026133523061\_1\_LARGE



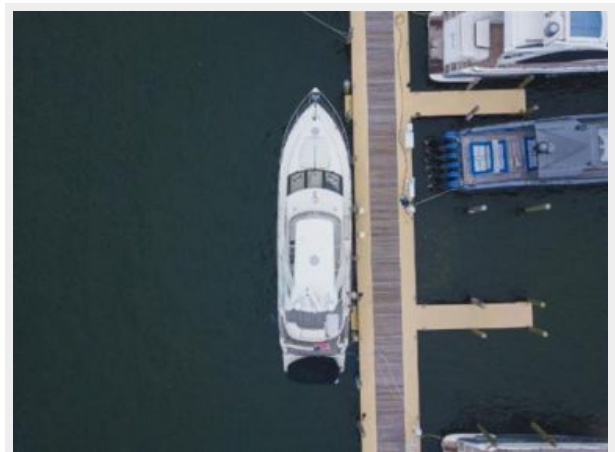
7637075\_20201026133527968\_1\_LARGE



7637075\_20201026133533051\_1\_LARGE



7637075\_20201026133538044\_1\_LARGE



7637075\_20201026133543485\_1\_LARGE



7637075\_20201026133548409\_1\_LARGE



7637075\_20201026133553230\_1\_LARGE



7637075\_20201026133558252\_1\_LARGE



7637075\_20201026133603380\_1\_LARGE



7637075\_20201026133608387\_1\_LARGE



7637075\_20201026133613260\_1\_LARGE



7637075\_20201026133618192\_1\_LARGE



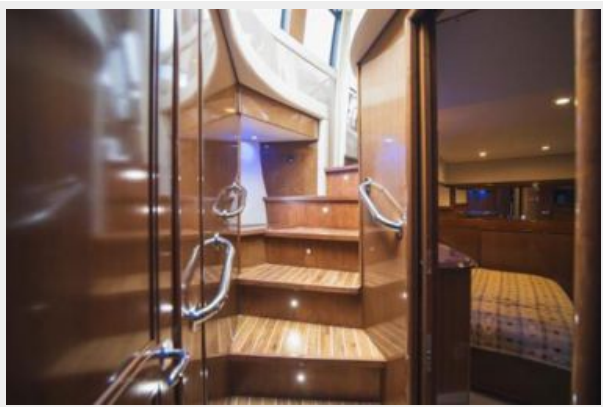
7637075\_20201026133623074\_1\_LARGE



7637075\_20201026133629760\_1\_LARGE



7637075\_20201026141535801\_1\_LARGE



7637075\_20201026141545426\_1\_LARGE



7637075\_20201026141554593\_1\_LARGE



7637075\_20201026141604375\_1\_LARGE



7637075\_20201026141614665\_1\_LARGE



7637075\_20201026141623967\_1\_LARGE



7637075\_20201026141632910\_1\_LARGE



7637075\_20201026141643238\_1\_LARGE



7637075\_20201026141652846\_1\_LARGE



7637075\_20201026141702851\_1\_LARGE



7637075\_20201026141712829\_1\_LARGE



7637075\_20201026141717739\_1\_LARGE



7637075\_20201026141723457\_1\_LARGE



7637075\_20201026141731604\_1\_LARGE



7637075\_20201026141740434\_1\_LARGE



7637075\_20201026141749037\_1\_LARGE



7637075\_20201026141758310\_1\_LARGE



7637075\_20201026141806822\_1\_LARGE



7637075\_20201026141822777\_1\_LARGE



7637075\_20201026141831001\_1\_LARGE



7637075\_20201026143059343\_1\_LARGE



7637075\_20201026143109545\_1\_LARGE



7637075\_20201026143119834\_1\_LARGE



7637075\_20201026143130798\_1\_LARGE



7637075\_20201026143141364\_1\_LARGE



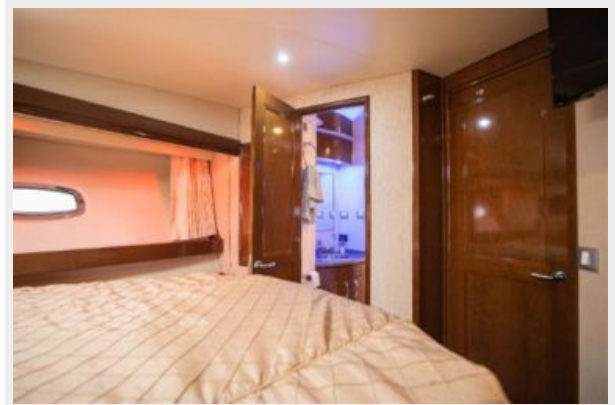
7637075\_20201026143150586\_1\_LARGE



7637075\_20201026143200471\_1\_LARGE



7637075\_20201026143213717\_1\_LARGE





7637075\_20201026143223503\_1\_LARGE



7637075\_20201026143234589\_1\_LARGE



7637075\_20201026143244927\_1\_LARGE



7637075\_20201026143254558\_1\_LARGE



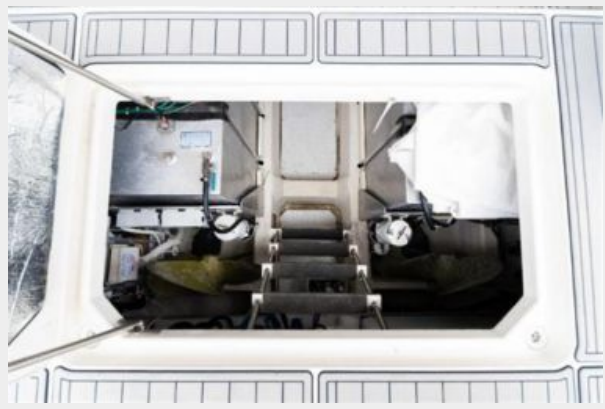
7637075\_20201026143303325\_1\_LARGE



7637075\_20201026143312689\_1\_LARGE



7637075\_20201026143831368\_1\_LARGE



7637075\_20201026143841003\_1\_LARGE



7637075\_20201026143851308\_1\_LARGE



7637075\_20201026143901216\_1\_LARGE



7637075\_20201026143911138\_1\_LARGE



7637075\_20201026143921184\_1\_LARGE



---

# CONTACTS

---

Andrey Shestakov, leading yacht broker of the sales department of Shestakov Yacht Sales Inc. Shestakov Yacht Sales Inc., the official representative of the Miami/Fort Lauderdale FL headquarters.

---

## Contact details

---

Email: [andrey@shestakovyachtsales.com](mailto:andrey@shestakovyachtsales.com)

Web: [shestakovyachtsales.com/en/](http://shestakovyachtsales.com/en/)

---

## Telephones

---

USA: +1(954)274-4435

---

## Office hours

---

Monday – Saturday: **9:00 - 21:00** EDT

Sunday: **closed**

---

## Address

---



Harbour Towne Marina, 850 NE 3rd St,  
STE 213, Dania, FL 33004