

CATALINA 315 — CATALINA



Builder: CATALINA

LOA: 31' 11" (9.73m)

Year Built: 2013

Model: Cruising/Racing Sailboat

Price: PRICE ON APPLICATION

Location: United States

Our experienced yacht broker, Andrey Shestakov, will help you choose and buy a yacht that best suits your needs **Catalina 315 — CATALINA** from our catalogue. Presently, at Shestakov Yacht Sales Inc., we have a wide variety of yachts available on our sale's list. We also work in close contact with all the big yacht manufacturers from all over the world.

If you would like to buy a yacht **Catalina 315 — CATALINA** or would like help answering any questions concerning purchasing, selling or chartering a yacht, please call **+1(954)274-4435**

TABLE OF CONTENTS

TABLE OF CONTENTS	2
SPECIFICATIONS	4
Basic Information	4
Dimensions	4
Accommodations	4
Hull and Deck Information	4
Engine Information	4
DETAILED INFORMATION	5
Big Boat Performance in a Small Package	5
Exclusions	6
Disclaimer	6
PHOTOS	7
7658694_20201119164506477_1_MINI	7
7658694_20201119164502417_1_MINI	7
7658694_20201119164459378_1_MINI	7
7658694_20201119164456257_1_MINI	7
7658694_20201118190705616_1_MINI	7
7658694_20201118190843979_1_MINI	7
7658694_20201118190552441_1_MINI	8
7658694_20201118190555762_1_MINI	8
7658694_20201118190546576_1_MINI	8
7658694_20201118190346630_1_MINI	8
7658694_20201118190342238_1_MINI	9
7658694_20201118190339966_1_MINI	9
7658694_20201118190334277_1_MINI	9
7658694_20201118190337170_1_MINI	9
CONTACTS	10
Contact details	10

Telephones	10
Office hours	10
Address	10

SPECIFICATIONS

Basic Information

Category: Cruising/Racing Sailboat

Sub Category: Cruising/Racing Sailboat

Model Year: 2013

Year Built: 2013

Country: United States

Dimensions

LOA: 31' 11" (9.73m)

Accommodations

Total Cabins: 2

Hull and Deck Information

Hull Material: Fiberglass

Engine Information

Engines: 1

Manufacturer: Yanmar

DETAILED INFORMATION

Big Boat Performance in a Small Package

Sea Proven Pocket Cruiser

Cruising World's 2013 Boat of the Year - Best Inshore Cruiser

The Catalina 315 was redesigned in 2013 to enter the 5 series cruiser/racer series of Catalina Yachts. The goal was to create a sail worthy pocket cruiser, capable of good speed and sail performance, yet could also stand up to the rigors of offshore sailing and hold its own. Instantly upon launch, the 315 was a success. The result was a nimble, and sea worthy pocket cruiser, with many attributes not seen in this class.

Sea Horse has lived up to the test. Since new, this one owner 315, has sailed up and down the SE coast between Charleston and the Keys and even made her way across the Florida Straits! The C-315 benefits from an above average ballast to weight ratio (39.20%), and is known to stand up to a swell for a boat just under 32', all the while not sacrificing speed. You'll be hard pressed to find a more modern and capable 32' boat with ample living accommodations down below. The teak wood interior and ultra leather upholstery gives the boat a modern and sturdy feel. With an almost 12' beam, the 315's salon makes it feel as you're on a much larger boat.

The C-315 really is a multi-purpose, do it all boat. Easy enough to quickly go day sailing, speedy enough to take first in club races, but will also allow you to take off cruising in the Bahamas if so desired. Perfect for a solo sailor or couple wanting to move up and start taking extended trips!

*****NEW LISTING ALERT - JUST ARRIVED NOV 15th - FULL INFORMATION AND DETAILED PICS COMING ASAP*****

Manufacturer's Description of Build Structure

A former winner of Cruising World's "Boat of the Year, Best Inshore Cruiser", the Catalina 315 has all the core attributes that made the 445 and 355 award-winning yachts and has a bold emphasis on strength. The boat has a five-part structural construction to ensure a ruggedly-built boat that withstands the test of time. The hull is solid hand-laid fiberglass and the deck is cored with end-grain balsa, with solid fiberglass in high load areas. The watertight StrikeZone™ collision bulkhead is a below water impact absorbing chamber with a watertight collision bulkhead. The DeepDefense™ rudder system creates failsafe steering and the rudder has a molded –in leading edge to avoid the need for a vulnerable seam on the foil's vertical centerline. The T-Beam MastStep™ system allows the perks of a deck-stepped mast and the strength of a keel-stepped mast. The SecureSocket™ mast support and chainplate system facilitates perfect

load resolution and watertight integrity. Knitted fabrics create a stronger laminate without additional weight. Trademark lead keels absorb impact for safety and require less maintenance than other materials.

Exclusions

Owner's personal belongings.

Disclaimer

The Company offers the details of this vessel or yacht in good faith but cannot guarantee or warrant the accuracy of this information nor warrant the condition of the vessel. A buyer should instruct his representatives, agents, or his surveyors, to investigate such details as the buyer desires validated. This vessel or yacht is offered subject to prior sale, price change, or withdrawal without notice.

PHOTOS

7658694_20201119164506477_1_MINI



7658694_20201119164502417_1_MINI



7658694_20201119164459378_1_MINI



7658694_20201119164456257_1_MINI



7658694_20201118190705616_1_MINI



7658694_20201118190843979_1_MINI



7658694_20201118190552441_1_MINI



7658694_20201118190555762_1_MINI



7658694_20201118190546576_1_MINI



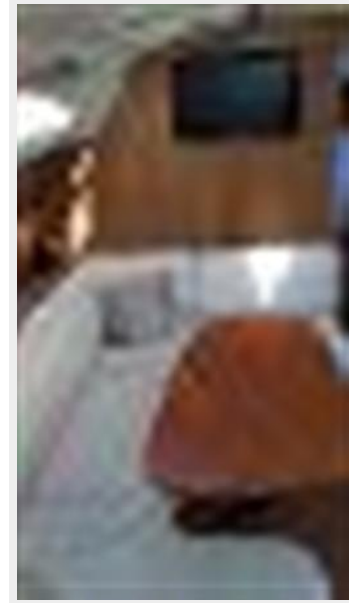
7658694_20201118190346630_1_MINI



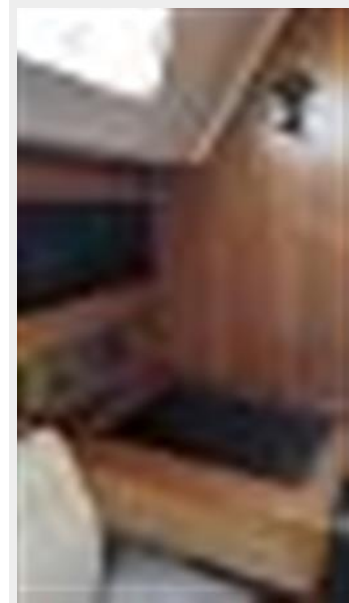
7658694_20201118190342238_1_MINI



7658694_20201118190339966_1_MINI



7658694_20201118190334277_1_MINI



7658694_20201118190337170_1_MINI



CONTACTS

Andrey Shestakov, leading yacht broker of the sales department of Shestakov Yacht Sales Inc. Shestakov Yacht Sales Inc., the official representative of the Miami/Fort Lauderdale FL headquarters.

Contact details

Email: andrey@shestakovyachtsales.com

Web: shestakovyachtsales.com/en/

Telephones

USA: +1(954)274-4435

Office hours

Monday – Saturday: **9:00 - 21:00** EDT

Sunday: **closed**

Address



Harbour Towne Marina, 850 NE 3rd St,
STE 213, Dania, FL 33004