

AEQUANIMITY — BAVARIA



Судостроитель: BAVARIA

Год постройки: 2004

Модель: Sloop

Цена: **ЦЕНА ЯХТЫ ПО ЗАПРОСУ**

Местонахождение: United States

Длина общая: 36' 5" (11.10m)

Ширина: 11' 10" (3.61m)

Макс. осадка: 6' 6" (1.98m)

Купить **Aequanimity — BAVARIA** а также выбрать подходящую вам яхту из нашего каталога яхт вам поможет опытный яхтенный брокер Андрей Шестаков. На сегодняшний день компания **Shestakov Yacht Sales Inc.** имеет большое количество яхт в собственном списке продаж, а также тесно сотрудничает со всеми крупными яхтенными производителями по всему миру.

Для того чтобы купить яхту **Aequanimity — BAVARIA** а также проконсультироваться по любому вопросу связанному с покупкой, продажей, чартером яхт позвоните по телефону **+7(918)465-66-44**.

ОГЛАВЛЕНИЕ

ОГЛАВЛЕНИЕ	2
ХАРАКТЕРИСТИКИ	5
Обзор	5
Основная информация	5
Размеры	5
Скорость, вместимость и масса	5
Размещение	5
Корпус и палуба	5
Информация о двигателе	6
ПОДРОБНОЕ ОПИСАНИЕ	7
MAIN DESCRIPTION	7
36' Bavaria Overview	7
36' Bavaria Vessel Walkthrough	7
36' Accommodations	7
36' Bavaria Salon	7
36' Bavaria Galley	8
36' Bavaria Dining	8
36' Bavaria Forward Stateroom	8
36' Bavaria Aft Staterooms	8
36' Bavaria Cockpit	8
36' Bavaria Audio/Visual Equipment	8
36' Bavaria Electronics	8
36' Bavaria Electrical System	9
36' Bavaria Engine/Mechanical Equipment	9
36' Bavaria Deck Equipment	9
36' Bavaria Sails and Rigging	9
36' Bavaria Safety and Fire Protection	9
36' Bavaria Exclusions	10

36' Bavaria Disclaimer	10
Исключения	10
Отказ от ответственности	10
ФОТОГРАФИИ	11
1 Aequanimity 2004 36' Bavaria	11
2	11
3	11
4	11
5	12
6	12
7	12
8	12
9	12
10	12
11	13
12	13
13	13
14	13
15	13
16	13
17	14
18	14
19	14
20	14
21	14
22	14
23	15
24	15
25	15

26	15
27	15
28	15
29	16
30	16
31	16
32	16
33	16
34	16
35	17
36	17
КОНТАКТЫ	18
Контактная информация	18
Телефоны	18
Время работы	18
Адрес	18

ХАРАКТЕРИСТИКИ

Обзор

Aequanimity is a 2004 36' Bavaria 3 stateroom model. She offers a Volvo-Penta 29 HP auxiliary with a Sail Drive, Heart Interface 2000 watt inverter, Ocean Breeze 16,500 BTU air conditioning/heating system, Lofrens Cayman 88 anchor windlass, Harken roller furler, fully battened Mainsail with stack pack, running/standing rigging replaced in 2017, fully equipped galley and African Mahogany interior.

Основная информация

Тип судна: Sloop

Модельный год: 2004

Год постройки: 2004

Страна: United States

Размеры

Длина общая: 36' 5" (11.10m)

Ширина: 11' 10" (3.61m)

Макс. осадка: 6' 6" (1.98m)

Трапы: 50' 6" (15.39m)

Скорость, вместимость и масса

Водоизмещение: 12000 Pounds

Вместимость воды: 80 Gallons

Вместимость сточного бака: 15 Gallons

Объем топливного бака: 40 Gallons

Размещение

Всего кают: 3

Всего ком. состава: 1

Корпус и палуба

Материал корпуса: Fiberglass

Информация о двигателе

Двигатели: 1

Производитель: Volvo Penta

Модель: MD2030-D-BT

Тип двигателя: Inboard

Тип топлива: Diesel

ПОДРОБНОЕ ОПИСАНИЕ

MAIN DESCRIPTION

Aequanimity is a 2004 36' Bavaria 3 stateroom model. She offers a Volvo-Penta 29 HP auxiliary with a Sail Drive, Heart Interface 2000 watt inverter, Ocean Breeze 16,500 BTU air conditioning/heating system, Lofrens Cayman 88 anchor windlass, Harken roller furler, fully battened Mainsail with stack pack, running/standing rigging replaced in 2017, fully equipped galley and African Mahogany interior.

36' Bavaria Overview

Aequanimity is a 2004 36' Bavaria 3 stateroom model. She offers a Volvo-Penta 29 HP auxiliary with a Sail Drive, Heart Interface 2000 watt inverter, Ocean Breeze 16,500 BTU air conditioning/heating system, Lofrens Cayman 88 anchor windlass, Harken roller furler, fully battened Mainsail with stack pack, running/standing rigging replaced in 2017, fully equipped galley and African Mahogany interior.

36' Bavaria Vessel Walkthrough

From the swimplatform, you can walk through the open transom into the cockpit and find benchseating with storage on either side. Walk forward and step down into the salon, where you will find a stateroom aft on each side, galley port aft, benchseat/berth/storage to port and to starboard, nav station starboard aft, head port forward and another stateroom forward.

The head room in the forward stateroom and head is 5'9", 6'1" in the salon, 5'11" in the galley and 6' in each aft stateroom. The forward stateroom berth is 6'9" long, the salon port berth is 5'9" long, the salon starboard berth is 6'1" long and the aft staterooms berths are 6'9" long.

36' Accommodations

Aequanimity offers a stateroom forward with a v-berth and two staterooms aft with a double size berth each. The salon has a single benchseat/berth on each side forward. The head is port forward.

36' Bavaria Salon

The salon offers a benchseat/berth with storage on each side forward, centerline folding teak table, teak & holly sole, storage cabinets, 4 portlights with curtains, overhead hatch with shade and a fan.

36' Bavaria Galley

The galley is located port aft in the salon.

- Bavaria Yachts 2-burner propane cooktop and oven- WestBend microwave oven- Waeco Coolmatic cold-plate refrigeration- Double stainless steel sinks- Storage cabinets and drawers- Formica countertop- Double stainless steel sinks with a filtered water faucet

36' Bavaria Dining

Dining space is available at the salon fold-up teak table and the cockpit fold up table.

36' Bavaria Forward Stateroom

The forward stateroom offers a v-berth, fan, 2 overhead hatches with shades, storage cabinets, hanging locker, benchseat with storage starboard aft and direct access to the head.

36' Bavaria Aft Staterooms

Both aft staterooms offer a double size berth, fan, 2 portlights with curtains, hanging locker, storage cabinet and shelf.

36' Bavaria Cockpit

The cockpit offers a teak deck, dodger, bimini, benchseat with storage each side, walk-thru transom aft, folding lift up table and helm.

36' Bavaria Audio/Visual Equipment

- Dual MXD34DSxm sat ready and Bluetooth stereo (2020)

36' Bavaria Electronics

- Raymarine Radar- Garmin GPS 152 chart plotter at the nav station- Icom IC-M422 VHF at the nav station with remote Commandmic II in the cockpit- Plastimo clock and barometer at the nav station- Raymarine autopilot in the cockpit (2017)- Raymarine C120 multi-function display in the cockpit with Navionics electronic charts- Raymarine ST60 wind, speed and depth displays in the cockpit- Plastimo Olympic 135 magnetic compass in the cockpit

36' Bavaria Electrical System

- Heart Interface 2000 watt inverter- Deka 904D battery (8/2017)- Duracell SLI4DA battery- Sure Power Industries multi battery isolator- Xantrex inverter/charger and battery monitor panel at the nav station- 30 amp shore cord (2020) and connection
- Valeo 50 amp alternator (2020)

36' Bavaria Engine/Mechanical Equipment

- Volvo Penta MD2030-DB1 29 hp auxiliary with approximately 1,290 hours (New fresh water and raw water pumps, impeller, fuel and oil filters and exhaust riser in 2020)- Volvo Penta S255A gearbox- Sail Drive with 3-blade folding propeller- Lewmar steering system- Ocean Breeze reverse cycle air conditioning/heating system (16,500 BTU unit)- 6 gallon water heater- Jabsco manual head

36' Bavaria Deck Equipment

- Lofrens Cayman 88 anchor windlass with remote control- Delta anchor- Stainless steel rails fore and aft and stainless steel stanchions with double lifelines and netting on each side- Non-skid decks and teak deck in the cockpit- Outboard bracket- Stainless steel swim ladder- Hot/cold fresh water shower on the swimplatform- Custom winter cover

36' Bavaria Sails and Rigging

- Selden spars- Double spreader mast- Fully battened Mainsail with lazyjacks and Doyle stack pack- Harken roller furler and Jib (2017)- Stormsail and anchor sail- Adjustable backstay- Running and standing rigging replaced in 2017- Rutgerson traveler- 2 X Harken self-tailing 16 winches- 2 X Harken self-tailing 40 2 speed winches- All lines lead aft to the cockpit for easy sail handling
- Rigging inspected in 2020

36' Bavaria Safety and Fire Protection

- Class A Ocean EC conformity rating
- Lifesling2 overboard recovery system- Fire extinguishers- Xintex S-1 propane fume detector (2020)- First Alert smoke detector

36' Bavaria Exclusions

- Sellers' personal belongings

36' Bavaria Disclaimer

The Company offers the details of this vessel in good faith but cannot guarantee or warrant the accuracy of this information nor warrant the condition of the vessel. A buyer should instruct his agents, or his surveyors, to investigate such details as the buyer desires validated. This vessel is offered subject to prior sale, price change, or withdrawal without notice.

Исключения

При продаже яхты исключаются личные вещи владельца.

Отказ от ответственности

Компания предоставляет описание судна или яхты добросовестно, но не может гарантировать точность этой информации, а также не ручается за техническое состояние. Покупатель должен проинструктировать своих агентов или оценщиков исследовать представленную информацию более подробно, по собственному желанию. Продажа судна или яхты, изменение цены или снятие с продажи будет происходить без предварительного уведомления.

ФОТОГРАФИИ

1 Аequanimity 2004 36' Bavaria



2



3



4



5



6



7



8



9



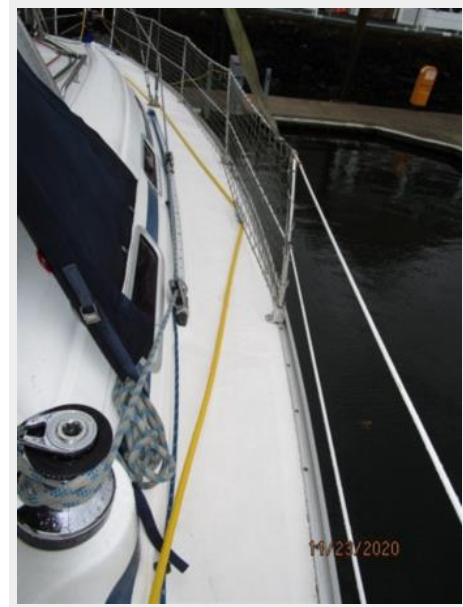
10



11



12



13



14



15



16



17



18



19



20



21



22



23



24



25



26



27



28



29



30



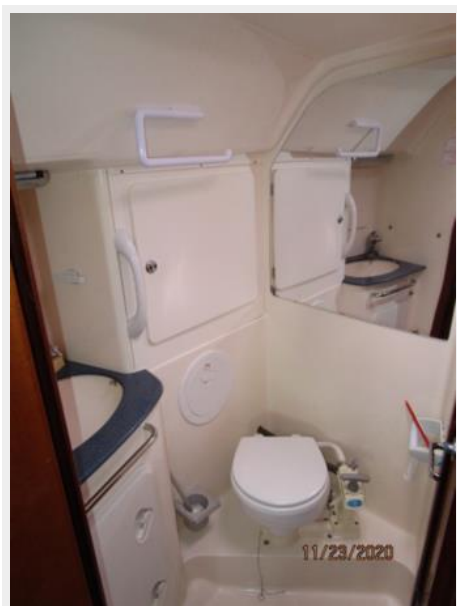
31



32



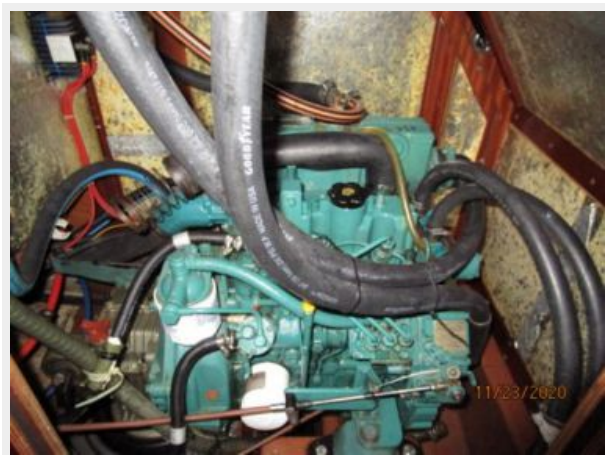
33



34



35



36



КОНТАКТЫ

Андрей Шестаков (Andrey Shestakov) – ведущий яхтенный брокер отдела продаж яхт и судов компании Shestakov Yacht Sales Inc. Официальный представитель Shestakov Yacht Sales Inc. для русскоговорящих клиентов в центральном офисе компании в Майами/Форт Лодердейл/Флорида/США.

Контактная информация

Email: **andrey@shestakovyachtsales.com**

Web: shestakovyachtsales.com

Телефоны

Краснодарский край: **+7(918)465-66-44**

США, Майами, Флорида: **+1(954)274-4435**

Время работы

Понедельник – Суббота: **9:00 - 21:00**
EDT

Воскресенье: **Закрето**

Адрес



Harbour Towne Marina, 850 NE 3rd St,
STE 213, Dania, FL 33004