

N/A — BERTRAM



Builder: BERTRAM

Year Built: 1969

Model: Motor Yacht

Price: PRICE ON APPLICATION

Location: United States

LOA: 28' 0" (8.53m)

Beam: 7' 5" (2.26m)

Max Draft: 1' 8" (0.51m)

Our experienced yacht broker, Andrey Shestakov, will help you choose and buy a yacht that best suits your needs N/A — BERTRAM from our catalogue. Presently, at Shestakov Yacht Sales Inc., we have a wide variety of yachts available on our sale's list. We also work in close contact with all the big yacht manufacturers from all over the world.

If you would like to buy a yacht N/A — BERTRAM or would like help answering any questions concerning purchasing, selling or chartering a yacht, please call +1(954)274-4435

TABLE OF CONTENTS

TABLE OF CONTENTS	2
SPECIFICATIONS	4
Overview	4
Basic Information	5
Dimensions	5
Accommodations	5
Hull and Deck Information	5
Engine Information	5
DETAILED INFORMATION	6
Engines	6
Additional Information	6
Exclusions	6
Disclaimer	6
PHOTOS	7
7672530_20201130125809463_1_LARGE	7
7672530_20201130125811380_1_LARGE	7
7672530_20201130125812333_1_LARGE	7
7672530_20201130125813412_1_LARGE	7
7672530_20201130125814406_1_LARGE	8
7672530_20201130125816335_1_LARGE	8
7672530_20201130125817393_1_LARGE	8
7672530_20201130125818331_1_LARGE	8
7672530_20201130125819357_1_LARGE	8
7672530_20201130125820416_1_LARGE	8
7672530_20201130125821456_1_LARGE	9
7672530_20201130125822357_1_LARGE	9
CONTACTS	10
Contact details	10

Telephones	10
Office hours	10
Address	10

SPECIFICATIONS

Overview

Bertram only made 11 of these exclusive race boats. 9 of them were shipped to the Israeli government as gun boats. This rare gem was used in the famous 1968 Miami to Nassau offshore race.

Top of the line hardware, all 316 stainless steel nuts and bolts, custom exhaust by Stainless Marine painted with Awl grip paint and coats of clear. Tea deck stripped and refurnished.

Engine restore and blue printed by Nascar engine builder. Four year nut and bolt restoration.

Features: Twin 415 HP 350 C.I.D. Hi-Perf Chevrolet/ Crusaders with 4 BBL Carbs, 4 bolt mains, steel cranks, oil coolers and remote filters / fresh water coolant / blue Stern Drive Full instrumentation plus speedometer / auto meter marine gauges, Dual K-5 hydraulic external steering with stainless steel tie bar Kiekhaefer after planes Helm controlled hydraulic engine hatch. Twin electric and fuel pumps and remote fuel filters. Twin automatic halon fire extinguishers. Hull raw water pick-ups with shut-offs and sea strainers.

Twin modified 280 Volvo outdrives LH and RH

15 X 20 Bronze nibral props plus spares + (2) spares

(3) Batteries and (3) battery switches

Full canvas (blue)

Compass with blue card 4 1/2" Hi-Speed

(3) Auto bilge pumps plus one bilge puppy

Bilge blower

Engine room lights

Engine room walkway

Custom stainless steel thru-hull exhaust

Morse MT twin controls and cables

Factory lifting eyes

Stainless steel aft railing

App. 105 Gallons fuel

Updated upholstery - twin bucket seats with Pompanette shock absorbing bases. Rear bench seat, side cushions and engine box cushion with matching blue with black stripes

Full inlaid teak over mahogany cockpit with teak accents.

Basic Information

Category: Motor Yacht

Model Year: 1969

Year Built: 1969

Country: United States

Dimensions

LOA: 28' 0" (8.53m)

Beam: 7' 5" (2.26m)

Max Draft: 1' 8" (0.51m)

Accommodations

Total Cabins: 3

Hull and Deck Information

Hull Material: Fiberglass

Engine Information

Engines: 2

Manufacturer: Chevrolet

Model: Crusader

Engine Type: Inboard

Fuel Type: Gas/Petrol

DETAILED INFORMATION

Engines

- **Twin 415 HP 350 C.I.D. Hi-Perf Chevrolet/Crusaders with 4 BBL Carbs, 4 bolt mains, steel cranks, oil coolers and remote filters / fresh water coolant / blue**
- **Engine hours: 12 hrs**

Additional Information

- **GPS / Transducer**
- **Electric bilge pumps (3)**
- **Battery charger**

Exclusions

Owner's personal belongings.

Disclaimer

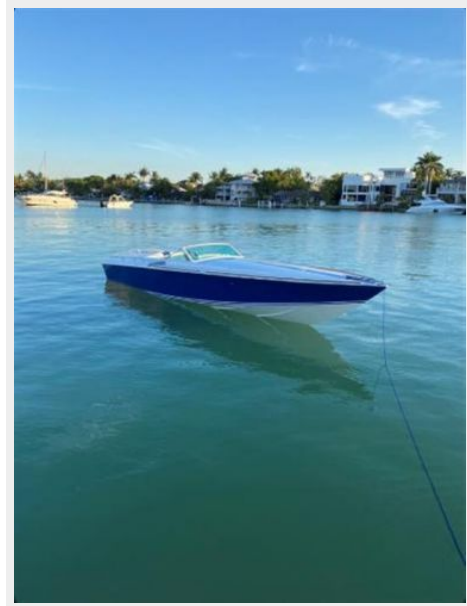
The Company offers the details of this vessel or yacht in good faith but cannot guarantee or warrant the accuracy of this information nor warrant the condition of the vessel. A buyer should instruct his representatives, agents, or his surveyors, to investigate such details as the buyer desires validated. This vessel or yacht is offered subject to prior sale, price change, or withdrawal without notice.

PHOTOS

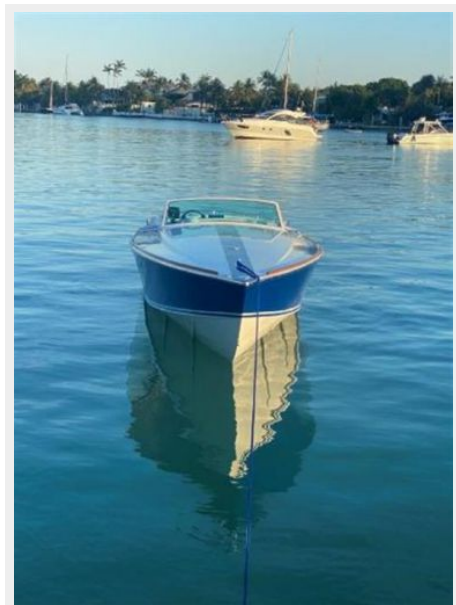
7672530_20201130125809463_1_LARGE



7672530_20201130125811380_1_LARGE



7672530_20201130125812333_1_LARGE



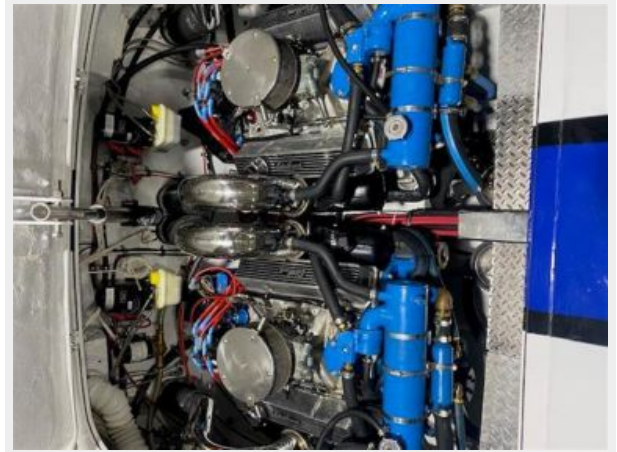
7672530_20201130125813412_1_LARGE



7672530_20201130125814406_1_LARGE



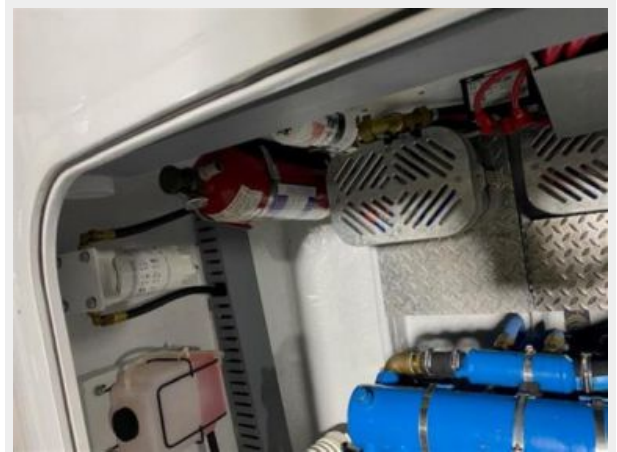
7672530_20201130125816335_1_LARGE



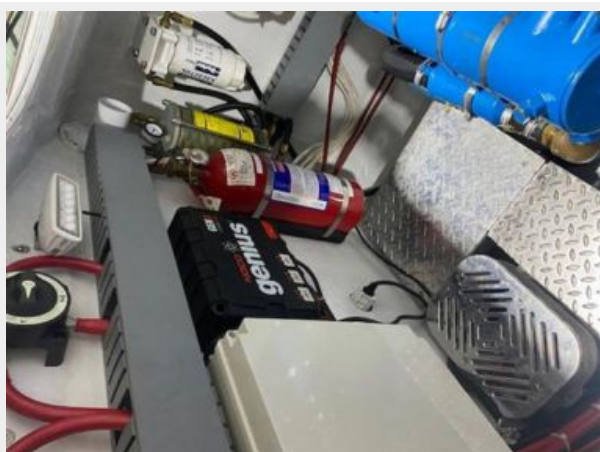
7672530_20201130125817393_1_LARGE



7672530_20201130125818331_1_LARGE



7672530_20201130125819357_1_LARGE



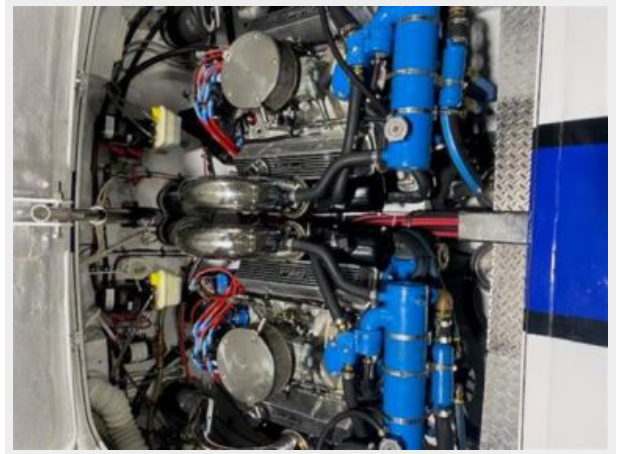
7672530_20201130125820416_1_LARGE



7672530_20201130125821456_1_LARGE



7672530_20201130125822357_1_LARGE



CONTACTS

Andrey Shestakov, leading yacht broker of the sales department of Shestakov Yacht Sales Inc. Shestakov Yacht Sales Inc., the official representative of the Miami/Fort Lauderdale FL headquarters.

Contact details

Email: **andrey@shestakovyachtsales.com**

Web: shestakovyachtsales.com/en/

Telephones

USA: +1(954)274-4435

Office hours

Monday – Saturday: **9:00 - 21:00** EDT

Sunday: **closed**

Address



Harbour Towne Marina, 850 NE 3rd St,
STE 213, Dania, FL 33004