

STAR ALLIANCE — CUSTOM



Builder: CUSTOM

Year Built: 1982

Model: Mega Yacht

Price: PRICE ON APPLICATION

Location: Brazil

LOA: 132' 0" (40.23m)

Beam: 20' 7" (6.27m)

Max Draft: 9' 6" (2.90m)

Our experienced yacht broker, Andrey Shestakov, will help you choose and buy a yacht that best suits your needs **Star Alliance — CUSTOM** from our catalogue. Presently, at Shestakov Yacht Sales Inc., we have a wide variety of yachts available on our sale's list. We also work in close contact with all the big yacht manufacturers from all over the world.

If you would like to buy a yacht **Star Alliance — CUSTOM** or would like help answering any questions concerning purchasing, selling or chartering a yacht, please call **+1(954)274-4435**

TABLE OF CONTENTS

TABLE OF CONTENTS	2
SPECIFICATIONS	7
Overview	7
Basic Information	7
Dimensions	7
Speed, Capacities and Weight	7
Accommodations	8
Hull and Deck Information	8
Engine Information	8
DETAILED INFORMATION	9
Vessel Details	9
Exclusions	14
Disclaimer	14
PHOTOS	15
7672169_20201130092052455_1_XLARGE	15
7672169_20201130092013275_1_XLARGE	15
7672169_20201130081627792_1_XLARGE	15
7672169_20201130081629789_1_XLARGE	15
7672169_20201130081631740_1_XLARGE	15
7672169_20201130081633759_1_XLARGE	15
7672169_20201130081634833_1_XLARGE	16
7672169_20201130081636756_1_XLARGE	16
7672169_20201130081638740_1_XLARGE	16
7672169_20201130081639871_1_XLARGE	16
7672169_20201130081641744_1_XLARGE	16
7672169_20201130081642764_1_XLARGE	16
7672169_20201130081643834_1_XLARGE	17
7672169_20201130081644858_1_XLARGE	17

7672169_20201130081646845_1_XLARGE	17
7672169_20201130081647773_1_XLARGE	17
7672169_20201130081648754_1_XLARGE	17
7672169_20201130081649858_1_XLARGE	17
7672169_20201130081650820_1_XLARGE	18
7672169_20201130091920042_1_XLARGE	18
7672169_20201130091921112_1_XLARGE	18
7672169_20201130091923107_1_XLARGE	18
7672169_20201130091926104_1_XLARGE	19
7672169_20201130091925105_1_XLARGE	19
7672169_20201130091927110_1_XLARGE	19
7672169_20201130091928085_1_XLARGE	19
7672169_20201130091929065_1_XLARGE	19
7672169_20201130091930155_1_XLARGE	19
7672169_20201130091932152_1_XLARGE	20
7672169_20201130091933080_1_XLARGE	20
7672169_20201130091934129_1_XLARGE	20
7672169_20201130091935155_1_XLARGE	20
7672169_20201130091936171_1_XLARGE	21
7672169_20201130091937166_1_XLARGE	21
7672169_20201130091938149_1_XLARGE	21
7672169_20201130091939173_1_XLARGE	21
7672169_20201130091942190_1_XLARGE	22
7672169_20201130091941129_1_XLARGE	22
7672169_20201130091944137_1_XLARGE	22
7672169_20201130091943196_1_XLARGE	22
7672169_20201130091945199_1_XLARGE	23
7672169_20201130091946151_1_XLARGE	23
7672169_20201130091947204_1_XLARGE	23

7672169_20201130091949214_1_XLARGE	23
7672169_20201130091951222_1_XLARGE	24
7672169_20201130091953160_1_XLARGE	24
7672169_20201130091954232_1_XLARGE	24
7672169_20201130091955244_1_XLARGE	24
7672169_20201130091957177_1_XLARGE	25
7672169_20201130091956235_1_XLARGE	25
7672169_20201130091958283_1_XLARGE	25
7672169_20201130091959182_1_XLARGE	25
7672169_20201130092000264_1_XLARGE	26
7672169_20201130092001399_1_XLARGE	26
7672169_20201130092003292_1_XLARGE	26
7672169_20201130092005218_1_XLARGE	26
7672169_20201130092009302_1_XLARGE	27
7672169_20201130092007304_1_XLARGE	27
7672169_20201130092011298_1_XLARGE	27
7672169_20201130092019360_1_XLARGE	27
7672169_20201130092021298_1_XLARGE	27
7672169_20201130092023259_1_XLARGE	27
7672169_20201130092025321_1_XLARGE	28
7672169_20201130092024251_1_XLARGE	28
7672169_20201130092026261_1_XLARGE	28
7672169_20201130092028272_1_XLARGE	28
7672169_20201130092029357_1_XLARGE	29
7672169_20201130092030340_1_XLARGE	29
7672169_20201130092032347_1_XLARGE	29
7672169_20201130092033383_1_XLARGE	29
7672169_20201130092036411_1_XLARGE	29
7672169_20201130092035352_1_XLARGE	29

7672169_20201130092037400_1_XLARGE	30
7672169_20201130092038371_1_XLARGE	30
7672169_20201130092039301_1_XLARGE	30
7672169_20201130092040723_1_XLARGE	30
7672169_20201130092043333_1_XLARGE	31
7672169_20201130092042432_1_XLARGE	31
7672169_20201130092044334_1_XLARGE	31
7672169_20201130092045750_1_XLARGE	31
7672169_20201130092047320_1_XLARGE	32
7672169_20201130092048385_1_XLARGE	32
7672169_20201130092049418_1_XLARGE	32
7672169_20201130092050428_1_XLARGE	32
7672169_20201130092054444_1_XLARGE	32
7672169_20201130092056452_1_XLARGE	32
7672169_20201130092057440_1_XLARGE	33
7672169_20201130092058430_1_XLARGE	33
7672169_20201130092059446_1_XLARGE	33
7672169_20201130092100467_1_XLARGE	33
7672169_20201130092101520_1_XLARGE	33
7672169_20201130092103400_1_XLARGE	33
7672169_20201130092104476_1_XLARGE	34
7672169_20201130092106378_1_XLARGE	34
7672169_20201130092107508_1_XLARGE	34
7672169_20201130092108397_1_XLARGE	34
7672169_20201130092109419_1_XLARGE	34
7672169_20201130092110511_1_XLARGE	34
7672169_20201130092111453_1_XLARGE	35
7672169_20201130092113527_1_XLARGE	35
7672169_20201130092115496_1_XLARGE	35

7672169_20201130092116503_1_XLARGE	35
7672169_20201130092117526_1_XLARGE	35
7672169_20201130092017305_1_XLARGE	35
7672169_20201130092015276_1_XLARGE	36
CONTACTS	37
Contact details	37
Telephones	37
Office hours	37
Address	37

SPECIFICATIONS

Overview

She will meet your expectations with a spacious flybridge, wheelhouse, expansive main deck with master suite, Professional galley and lower deck with guest staterooms for eight, and accommodations for a crew that will insure a quality cruise.

The large open flybridge with radar arch and upper station provides an open air area to relax and entertain. The main deck has walkaround teak deck with main salon connects with the covered aft deck. There is one stateroom on the main deck, the master suite, forward of Salon and Galley.

The lower deck has four private staterooms with accommodations for eight. The two staterooms feature queen berths and full accommodations. There are two guest staterooms with twin berths and en suite heads with showers. Crew quarters are located below the forward deck / Captains cabin and officers cabin on 2nd deck level behind the wheelhouse.

Powered by twin 520 hp Caterpillar diesel engines this beauty will cruise with comfort and dependability. Engines were overhauled at 2200 hours with 450 hours since the overhaul. There is reverse cycle HVAC for interior comfort and generators for offshore electrical power. The functional refitting has been done with personal upgrades remaining for her new owner.

Basic Information

Category: Mega Yacht

Model Year: 1982

Year Built: 1982

Country: Brazil

Fly Bridge: Yes

Cockpit: Yes

Dimensions

LOA: 132' 0" (40.23m)

Beam: 20' 7" (6.27m)

Max Draft: 9' 6" (2.90m)

Speed, Capacities and Weight

Displacement: 530000 Pounds

Accommodations

Total Cabins: 5

Hull and Deck Information

Hull Material: Steel

Engine Information

Engines: 2

Manufacturer: Caterpillar

Model: 3412T

Engine Type: Inboard

Fuel Type: Diesel

DETAILED INFORMATION

Vessel Details

Overview

This superyacht was built and designed in Greece, ran as a luxury charter with several VIP's (got an endorsement written in its log from Robert Wagner !) in the Mediterranean sea always with the same owner. in 2012 the owner sadly passed away leaving the vessel to his US resident son who did not know anything about ships and sold it to current owner. as the previous owner was sick for a few years before he passed the boat had been dormant in the water for about two years so present owner had her hauled out of the water (bills and extensive photographs are available) and had a massive and very expensive refit done.

All steel was sounded, bulkheads, decks, hull, everything. any steel under water not up to par was cut out and replaced. The bottom of the swim platform was cut out and re-ribbed, then new steel was placed. The shafts were pulled out, bearings replaced, shafts resurfaced, polished, you name it. outer cutlass bearings were replaced by a new system with Teflon bearings. Rudders: same thing All new zincs of course, underwater lights were placed, new transducer for the depth finder, 2 coats of primer, 5 coats of anti-fouling.

Accommodations

- Master full beam on deck stateroom with king berth and private bath
- Guest stateroom on second deck with twin berths and private bath
- Captain's cabin with single berth and small private bath
- Four full beam staterooms below deck
- Two feature queen berths and private bathrooms
- Two feature twin berths and private bathroom
- Crew quarters under forward deck currently gutted with room for eight

Deck and Hull

- New deck with non-slip PVC tiles
- All steel sounded and repaired
- Upgraded swim platform
- Shafts resurfaced and bearings replaced
- Zincs replaced
- Underwater lighting installed
- Two coats of primer
- Five coats of anti-fouling

Navigation and Electronics

- New Garmin 5012 with radar and AIS overlay
- New Simrad autopilot
- New AIS True Heading

Electrical

- Two 57-kW Caterpillar 3802 generators
- 220v inverter and 110v inverter
- 110v outlets and lights
- 24v battery bank - 3000 amhours
- Twenty-four solar panels
- New battery bank
- 140 amp 24v charger
- LED lighting

Engines

- Two Caterpillar 3412 diesel engines
- Overhauled at 2200 hours, 450 hours since overhaul
- Fuel injectors and pumps cleaned, inspected
- New Double Racor fuel filters
- New starting banks
- Range of 3500 nm @ 9 kn
- Cooling system for main engines completely overhauled 2016
- New ZF electronic engine controls in 2016
- New automatic daytank filling system in 2016
- When bimini for 24 solar panels is installed the vessel can be completely generator independent at anchor

Improvements Made

Shafts (both rudder and Drive) pulled, checked, re-surfaced in the bearing areas. Bearings renewed, sealrings replaced on drive shafts, packing glands replaced on rudder stuffing boxes (2016)

New Antifouling (2018, ground down to bare steel and applied 2 coats of epoxy anti-corrosive, then barrier coat, then 3 layers of Antifouling)

New paintjob Hull, removal of bad plaster parts, pre-treating the newly exposed steel with Epoxy anti-corrosive paint. Endpaint job done with Roller, focused on thick and long lasting result (2018)

New paintjob superstructure, removal of bad plaster parts, re-fairing after treating exposed steel with Epoxy anti-corrosive paint. Endpaint job done with Roller, focused on thick and long lasting result (2017)

New paintjob front deck, inside bowcompartment, inside chainlockers (2018)

New underwater lights stern area (2016)

New Housebank, 24 x 2V batteries, Gel, 1500 aH each connected to one 24v Housebank 3000 Ah (2016)

New 24 Solar panels (8 loosely installed on 2nd deck aft, to keep charge on housebank)

New 140 Amp charger, 24v, for Housebank

New 4 x 3000 watt inverters, Victron, stackable, to create 12kW inverter from housebank for ships power independent from generators (220v, also a 5kW inverter for 110v systems is present) (2017)

New PVC tiles main deck (New PVC tiles 2nd deck are onboard, have to plan the job with the company, it's paid for and the decks are now treated and flattened (2016 – 2018)

New swimplatform Teakdeck (2018)

Anchors and Chains sandblasted and re-galvanized (2018)

New RPM gauges and sensors for precise RPM readings in both engine room and Wheelhouse (2018)

Engines and Generators serviced (last year overhauled complete cooling systems of both engines and generators) (2018)

Port Turbo overhauled (2018)

Starboard turbo maintenance done (cleaning and inspection) (2018)

Starboard generator new fuel injectors and injection pump overhauled (2018)

Port generator new fuel injectors (2018)

New large touchscreen Garmin GPS / Radar / AIS combo with Sonar / depthfinder (now on board 2 Radar / 3 GPS systems) (2016)

New AIS send / receive unit (2016)

New Simrad autopilot (2017)

New stainless steel Anchor plates (2018)

New refridgerator compressor (2017)

New muffler starboard engine (2017)

Partial new muffler port engine (2016)

New 16' RIB with 90 HP 2stroke engine (Selva Marine) (Hypalon) (2016)

New 11' Dinghy with 9.9 HP 4 stroke Suzuki engine (Hypalon) (2016)

New large flatscreen smart TV in salon (2016)

New PS4 Playstation with games and wireless controllers (2017)

New dolby 5.1 surround system with Blu-ray player in Salon (2016)

All lights in boat (110v and 220v replaced with LED bulbs) (2017)

New starting battery bank in Engine room for both sides (2017)

New radio emergency battery bank on flybridge and New electronics battery on Flybridge (powered by a total of 3 of those 24v solar panels) (2016)

New bed / Matress king size master bedroom (2016)

New bathroom furniture master Bedroom (2017)

New toilet (hanging) master bedroom (2017)

New electro step for shore movements (2016)

New foldable small bicycle for shore movements (2016)

New complete dive sets (2 x) with 2 18L divetanks each set. BCD, weights, one shorty suit 3mm one 8mm full length suit with hood (2017)

New underwater divescooter (Seabob) (2016)

New cutlery and silverware (2016)

New Airfryer (2017)

New Microwave (2016)

New Icemaker (2016)

New toaster / Grill (2017)

New Blender (2017)

Tools: New everything imaginable, from Grinders through Sanders and Welder. Various portable pumps,

one extremely powerfull dump-pump for raw contaminated water for emergency use with Firehose connection (2016 – 2017)

New extremely powerfull fuel pump (Bronze impellor) with 2.5" hose for fueltransfer Bowtank to Daytank / Center tank engine room (2017)

Large 4 Racor fuel-polishing system with custom made manifold for Bowtank (can circulate fuel in Bowtank (appr. 12.000 Liter) through 4 Racor 2020 filters continuously underway to keep fuel in tank extremely clean) (2017)

New 480 GPD watermaker (220v) (2017)

New 12L compressor (for airhorn use mostly) (2016)

New double 2020 Racor systems with switchvalves on both main engines (2016)

New 2020 Racor systems on each generator (2016)

New PVC Laminate flooring throughout the boat's inside (wood-laminate look for Salon, hallways, and Bedrooms. Similar as Deck-tile flooring for working areas (Kitchen, Toolroom, hallway in between and Wheelhouse) (2016)

New automatic daytank filling system (2016)

New 12 Person Liferaft container (2016, serviced until July 2018)

4 New docking lines, 2" braided chemical Hemp, 25m each, breaking strength >10.000 Kg (2017)

Second and third deck have been stripped of old decking material, ground down to bare steel, and retreated with epoxy anti corrosive paint and polyurethane paint on top. (2018)

Aft lazarette area steel areas cleaned out, sanded down and retreated with epoxy anti corrosive paint and top layer of poly urethane paint. (2018)

Seller's Notes

I am sure I'm still missing new items that got on board during the last 2 years but I'm also sure I maybe missing one or 2 items that should be addressed so please consider this an as exact as possible estimate

We consumed 70 liter on average @ 8 - 9 knots (going downhill) (both motors + one generator)

I've seen up to 90 liter with harsher conditions.

The boat is set up completely now to be able to run completely without generator so the consumption would go down with about 5 - 10 liters per hour.

The maximum range (including the use of the bowtank, driving at around 1 150 RPM / 8 knots) is over 3500 NM.

To Be Done

What remains to be done (in my opinion)

The de-plastered parts in the hull should be replastered and Hull repainted (spraypaint, yachtgloss) for a real Yacht-feeling (purely esthetics, see latest pictures hull paintwork) OR all fairing can be taken off and the steel repainted.

Installation of the new PVC tile deck (already paid for and materials on board)

2nd Deck structure for bimini in SS should be commissioned with welder / fabricator to give final setting for the 24 solar panels as well as create a shadow area on the 2nd deck (see picture attached, proposed price in Colombia around 10.000 usd)

For Instalation of all 24 solar panels a new Regulator should be installed (possibly 2) that arrange voltage of all panels into one serial input of maximum 888 Volts. This allows the panels to charge batteries even at dusk and dawn. Possibly even from a strong moonlight.

All below-deck bathrooms (4x) and the 2 topdeck bathrooms are old fashioned and could really use a refit. depending on how many people are on board, to prevent overflow / backflow through lower showers (black and grey are in one and the same tank currently) (right now there is no backflow as long as grey/blackwater are pumped out on a daily bases, or every 2 or three days if only one or two persons on board)

Currently the former crew room (has vertical ladder going down through hatch on front deck as entrance) could probably house 2, maybe 3 cabins (2 with double beds, 1 with stacked bunks possibly ?) with private small head is empty and gutted other than the bathroom, could be turned into a Gym also.

Exclusions

Owner's personal belongings.

Disclaimer

The Company offers the details of this vessel or yacht in good faith but cannot guarantee or warrant the accuracy of this information nor warrant the condition of the vessel. A buyer should instruct his representatives, agents, or his surveyors, to investigate such details as the buyer desires validated. This vessel or yacht is offered subject to prior sale, price change, or withdrawal without notice.

PHOTOS

7672169_20201130092052455_1_XLARGE



7672169_20201130092013275_1_XLARGE



7672169_20201130081627792_1_XLARGE



7672169_20201130081629789_1_XLARGE



7672169_20201130081631740_1_XLARGE



7672169_20201130081633759_1_XLARGE



7672169_20201130081634833_1_XLARGE



7672169_20201130081636756_1_XLARGE



7672169_20201130081638740_1_XLARGE



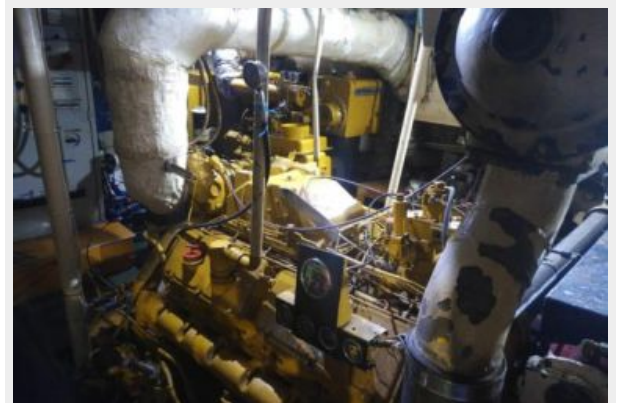
7672169_20201130081639871_1_XLARGE



7672169_20201130081641744_1_XLARGE



7672169_20201130081642764_1_XLARGE



7672169_20201130081643834_1_XLARGE



7672169_20201130081644858_1_XLARGE



7672169_20201130081646845_1_XLARGE



7672169_20201130081647773_1_XLARGE



7672169_20201130081648754_1_XLARGE



7672169_20201130081649858_1_XLARGE



7672169_20201130081650820_1_XLARGE



7672169_20201130091920042_1_XLARGE



7672169_20201130091921112_1_XLARGE



7672169_20201130091923107_1_XLARGE



7672169_20201130091926104_1_XLARGE



7672169_20201130091925105_1_XLARGE



7672169_20201130091927110_1_XLARGE



7672169_20201130091928085_1_XLARGE



7672169_20201130091929065_1_XLARGE



7672169_20201130091930155_1_XLARGE



7672169_20201130091932152_1_XLARGE



7672169_20201130091933080_1_XLARGE



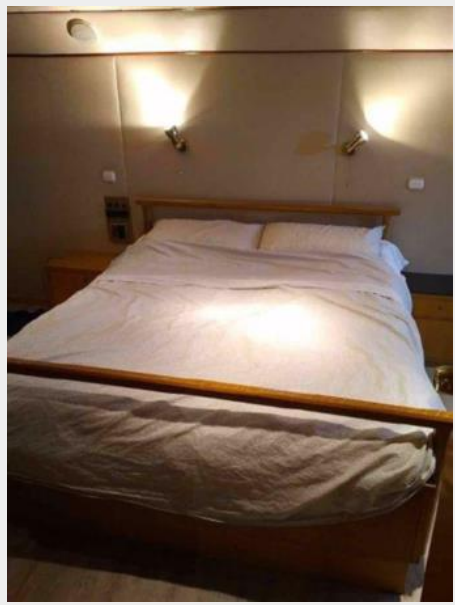
7672169_20201130091934129_1_XLARGE



7672169_20201130091935155_1_XLARGE



7672169_20201130091936171_1_XLARGE



7672169_20201130091937166_1_XLARGE



7672169_20201130091938149_1_XLARGE



7672169_20201130091939173_1_XLARGE



7672169_20201130091942190_1_XLARGE



7672169_20201130091941129_1_XLARGE



7672169_20201130091944137_1_XLARGE



7672169_20201130091943196_1_XLARGE



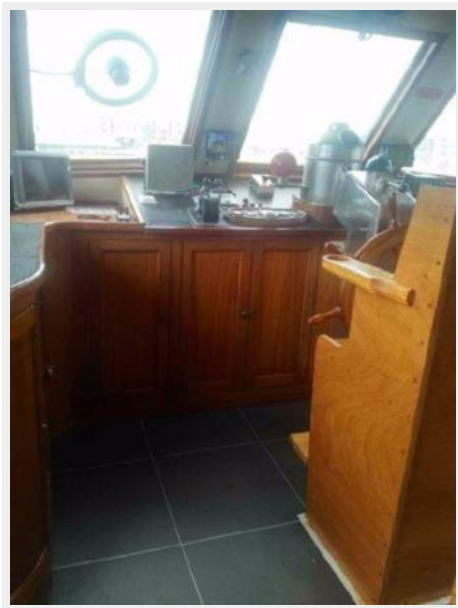
7672169_20201130091945199_1_XLARGE



7672169_20201130091946151_1_XLARGE



7672169_20201130091947204_1_XLARGE



7672169_20201130091949214_1_XLARGE



7672169_20201130091951222_1_XLARGE



7672169_20201130091953160_1_XLARGE



7672169_20201130091954232_1_XLARGE



7672169_20201130091955244_1_XLARGE



7672169_20201130091957177_1_XLARGE

7672169_20201130091956235_1_XLARGE



7672169_20201130091958283_1_XLARGE

7672169_20201130091959182_1_XLARGE



7672169_20201130092000264_1_XLARGE



7672169_20201130092001399_1_XLARGE



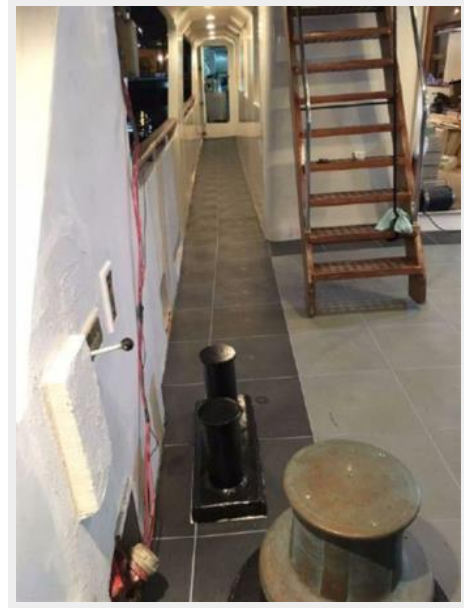
7672169_20201130092003292_1_XLARGE



7672169_20201130092005218_1_XLARGE



7672169_20201130092009302_1_XLARGE



7672169_20201130092007304_1_XLARGE



7672169_20201130092011298_1_XLARGE



7672169_20201130092019360_1_XLARGE



7672169_20201130092021298_1_XLARGE



7672169_20201130092023259_1_XLARGE



7672169_20201130092025321_1_XLARGE



7672169_20201130092024251_1_XLARGE



7672169_20201130092026261_1_XLARGE



7672169_20201130092028272_1_XLARGE



7672169_20201130092029357_1_XLARGE



7672169_20201130092030340_1_XLARGE



7672169_20201130092032347_1_XLARGE

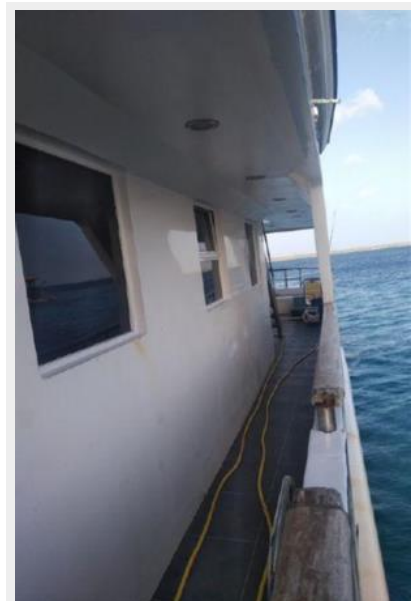
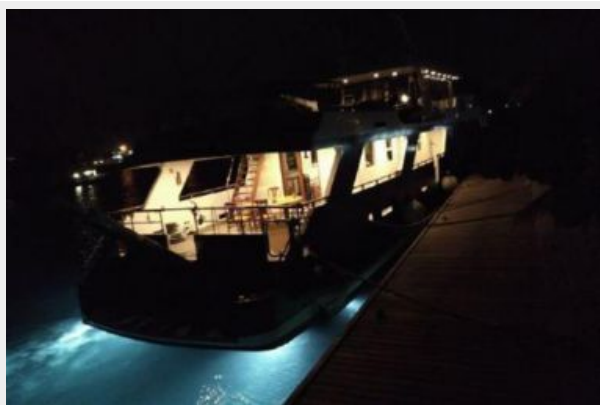


7672169_20201130092033383_1_XLARGE



7672169_20201130092036411_1_XLARGE

7672169_20201130092035352_1_XLARGE



7672169_20201130092037400_1_XLARGE



7672169_20201130092038371_1_XLARGE



7672169_20201130092039301_1_XLARGE



7672169_20201130092040723_1_XLARGE



7672169_20201130092043333_1_XLARGE

7672169_20201130092042432_1_XLARGE



7672169_20201130092044334_1_XLARGE



7672169_20201130092045750_1_XLARGE



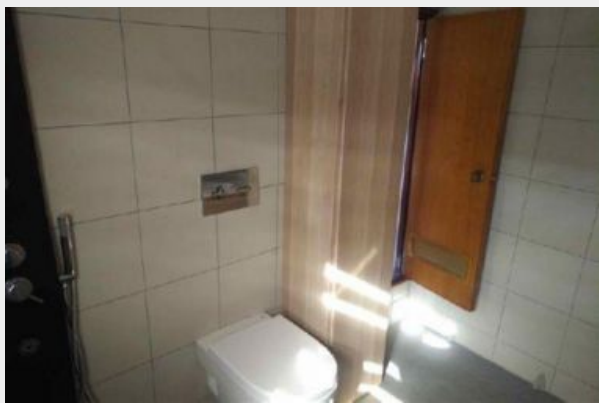
7672169_20201130092047320_1_XLARGE



7672169_20201130092048385_1_XLARGE



7672169_20201130092049418_1_XLARGE



7672169_20201130092050428_1_XLARGE



7672169_20201130092054444_1_XLARGE



7672169_20201130092056452_1_XLARGE



7672169_20201130092057440_1_XLARGE



7672169_20201130092058430_1_XLARGE



7672169_20201130092059446_1_XLARGE



7672169_20201130092100467_1_XLARGE



7672169_20201130092101520_1_XLARGE



7672169_20201130092103400_1_XLARGE



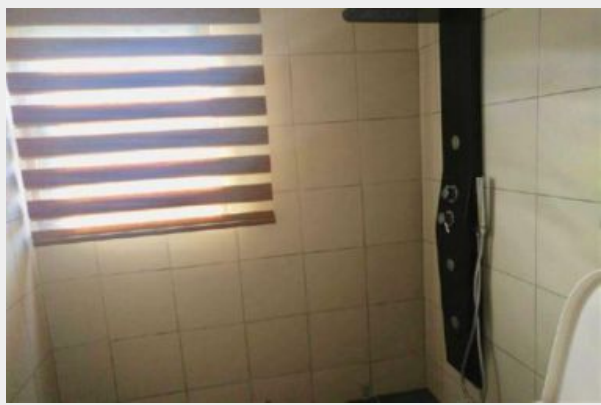
7672169_20201130092104476_1_XLARGE



7672169_20201130092106378_1_XLARGE



7672169_20201130092107508_1_XLARGE



7672169_20201130092108397_1_XLARGE



7672169_20201130092109419_1_XLARGE



7672169_20201130092110511_1_XLARGE



7672169_20201130092111453_1_XLARGE



7672169_20201130092113527_1_XLARGE



7672169_20201130092115496_1_XLARGE



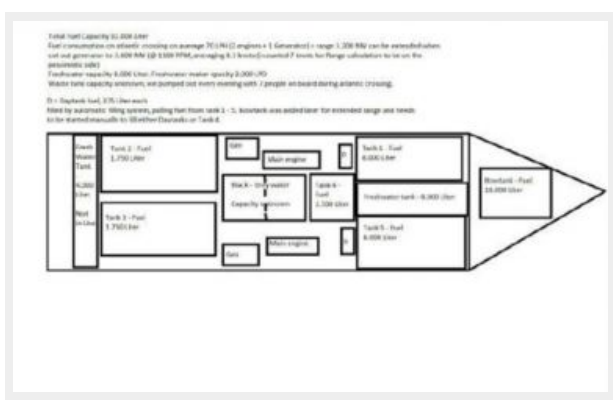
7672169_20201130092116503_1_XLARGE



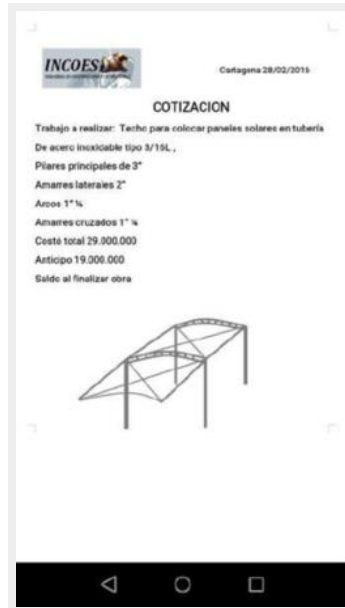
7672169_20201130092117526_1_XLARGE



7672169_20201130092017305_1_XLARGE



7672169_20201130092015276_1_XLARGE



CONTACTS

Andrey Shestakov, leading yacht broker of the sales department of Shestakov Yacht Sales Inc. Shestakov Yacht Sales Inc., the official representative of the Miami/Fort Lauderdale FL headquarters.

Contact details

Email: andrey@shestakovyachtsales.com

Web: shestakovyachtsales.com/en/

Telephones

USA: +1(954)274-4435

Office hours

Monday – Saturday: **9:00 - 21:00** EDT

Sunday: **closed**

Address



Harbour Towne Marina, 850 NE 3rd St,
STE 213, Dania, FL 33004