

PNEUMA — HATTERAS



Builder: HATTERAS

Year Built: 2007

Model: SHELBY

Price: PRICE ON APPLICATION

Location: United States

LOA: 80' 0" (24.38m)

Beam: 20' 6" (6.25m)

Max Draft: 5' 8" (1.73m)

Cruise Speed: 21 Kts. (24 MPH)

Max Speed: 25 Kts. (29 MPH)

Our experienced yacht broker, Andrey Shestakov, will help you choose and buy a yacht that best suits your needs **Pneuma — HATTERAS** from our catalogue. Presently, at Shestakov Yacht Sales Inc., we have a wide variety of yachts available on our sale's list. We also work in close contact with all the big yacht manufacturers from all over the world.

If you would like to buy a yacht **Pneuma — HATTERAS** or would like help answering any questions concerning purchasing, selling or chartering a yacht, please call **+1(954)274-4435**

TABLE OF CONTENTS

TABLE OF CONTENTS	2
SPECIFICATIONS	7
Overview	7
Basic Information	8
Dimensions	8
Speed, Capacities and Weight	8
Accommodations	9
Hull and Deck Information	9
Engine Information	9
DETAILED INFORMATION	10
2020 UPDATES	10
Salon	10
Dining	11
Galley	11
Day Head	12
Lower Forward Companionway	12
Master Stateroom	12
Master His and Hers Head	13
VIP Guest Stateroom	14
VIP Head	14
Bow Guest Stateroom	15
Bow Head	15
Starboard Guest Stateroom	16
Starboard Guest Head	16
Sky Lounge	17
Helm and Electronics	17
Boat Deck	18
Aft Deck	18

Sport Deck	19
Crew Quarters	19
Miscellaneous	20
Electrical	21
Engine and Mechanical	22
Exclusions	23
Mechanical Disclaimer	23
Disclaimer	23
Exclusions	23
Disclaimer	23
PHOTOS	25
1	25
2	25
3	25
4	25
5 salon	25
6 salon	25
7 salon	26
8 salon	26
9 salon	26
10 salon aft	26
11 salon	26
12 dining	26
13 dining	27
14 dining forward	27
15 dining	27
16 dining aft	27
17 galley	28
18 galley	28

19b galley	28
19a galley	28
20 galley	29
21 galley	29
22 galley	29
23 galley	29
24 day head	29
25 Lower Fwd companionway	29
26 Companionway and laundry	30
27 master	30
27a master	30
28 master	30
29 master	30
30 master	30
32	31
31 master	31
33	31
34	31
35	32
36	32
37	32
38	32
39	33
40 vip	33
41 vip	33
42 vip	33
43 vip	33
44 vip	33
45 vip head	34

47 bow gs	34
48 bow gs	34
49 bow gs	34
50 bow gs	34
51 bow gs	34
52	35
53	35
54 stbd gs	35
55 stbd gs	35
57	36
56 stbd gs	36
58	36
59 sl	36
60 sl	37
61	37
62 sl	37
63 sl	37
64 sl	37
65 hel	37
66 helm	38
67 helm seats	38
68 fly	38
69 fly	38
70 fly	38
71 fly	38
72 bow	39
73 bow	39
74 bow	39
75 bow	39

76	39
77	39
78	40
79	40
80	40
81 crew	40
82 crew	40
83 crew	40
84 crew	41
85 crew	41
86	41
87	41
88	42
89	42
90	42
91	42
92	42
93	42
94a	43
94b	43
94c	43
95	43
96	43
97	43
CONTACTS	44
Contact details	44
Telephones	44
Office hours	44
Address	44

SPECIFICATIONS

Overview

NEW LISTING!!

80' HATTERAS 2007

"PNEUMA" is an 80' Hatteras motor yacht built in 2007 with twin Caterpillar C32 engines. The 80' motor yacht boasts a full 21'3" beam. The Salon and Master Stateroom take full advantage of this space. She only draws 5'8" which gives access to the shallow waters of the Bahamas and beyond. "PNEUMA" is capable of a top speed of 25+ knots, with a cruising speed of 21 knots. Her solid fiberglass bottom, PVC foam-cored hull sides and decks, and Hatteras's famed construction methods ensure long term trouble free cruising. She is painted from stem to stern in Alexseal. This is a large yacht with over 190,000+ lbs of displacement. She's stabilized and ready to move your family and friends in comfort in most offshore sea conditions.

"PNEUMA" is boarded from port or starboard onto the teak aft deck. The custom deck table has ebony inlays. A large C-Shaped lounge with Sunbrella cushions and three teak chairs allow for seven people to enjoy al fresco dining around the beautiful, high gloss teak table. An LCD TV is concealed in the starboard forward hardtop and is easily viewable. Stainless steel gates are located port and starboard to separate the aft deck from the steps to the swim platform.

"PNEUMA" electrically actuated curved stainless steel sliding door opens to the full beam salon with a custom bar to starboard and seating to port. Forward of the bar, the 50" popup TV is easily viewable from portside sofa and chair. Forward of the salon is a six place, oval dining table with custom inlays. High gloss cherry and huge windows surround the area and offset the glass front cabinetry. A day head is forward to starboard.

"PNEUMA" offers a very spacious galley and informal dinette forward on the main level. A granite topped island contains loads of storage and provides an excellent prep area. It lies between the full sized side-by-side Sub-Zero refrigerator/freezer and the double sink with disposal. On the aft side of the galley is the stove with undercounter oven and a microwave above. A pantry is forward, beside one of the two pantograph doors leading to the side decks and foredeck. Aft of the pantry, stairs lead to the helm/sky lounge.

"PNEUMA" enclosed bridge has a full bevy of navigational electronics at the helm. Aft of the helm are port and starboard lounges, full wet bar with a pop-up flat screen LCD TV, refrigerator, ice maker and ample cabinetry for bottles and barware. Aft of the enclosed Sky Lounge is the exterior sun lounge with built-in seating and a cocktail table. Also located on the flybridge aft deck, is a double Gaggenau BBQ grill encased in a fiberglass cabinet. The dinghy storage, davit, and external stairs to the lower aft deck are aft of the seating area.

"PNEUMA's" accommodations are accessed from a spacious companionway, which boasts a breakfast bar with refrigeration, and a stacked washer/dryer. Aft is the full beam Master Stateroom

with six large windows and "his and hers" heads with a common marble shower. Twelve-drawer dressers on either side of the stateroom are finished in high gloss cherry. Cedar lined closets provide plenty of hanging space. Forward through the companionway are three additional staterooms, two with queen sized berths and one with twin single bunks. All have en-suite heads.

"PNEUMA's" Crew Quarters are accessed either from a door on the aft deck or from the center door located on the swim platform. There are two cabins: the Captain's cabin has a walk around double berth with a single berth above on the starboard side. The Crew Cabin has a Pullman upper berth over lower single berth. These two cabins provide accommodations for up to five crew members. The crew head with stall shower, a second stacked washer/dryer unit, additional freezer space, and access to the Engine Room are all found in this area.

Basic Information

Category: SHELBY

Sub Category: Sky Lounge

Model Year: 2007

Year Built: 2007

Country: United States

Fly Bridge: Yes

Cockpit: Yes

Dimensions

LOA: 80' 0" (24.38m)

LWL: 78' 7" (23.95m)

LOD: 80' 11" (24.66m)

Beam: 20' 6" (6.25m)

Max Draft: 5' 8" (1.73m)

Clearance: 21' 3" (6.48m)

Speed, Capacities and Weight

Cruise Speed: 21 Kts. (24 MPH)

Max Speed: 25 Kts. (29 MPH)

Displacement: 190000 Pounds

Water Capacity: 326 Gallons

Holding Tank: 388 Gallons

Fuel Capacity: 2858 Gallons

Accommodations

Total Cabins: 5

Sleeps: 11

Total Heads: 7

Hull and Deck Information

Hull Material: Fiberglass

Hull Configuration: Planing

Engine Information

Engines: 2

Manufacturer: Caterpillar

Model: C-32

Engine Type: Inboard

Fuel Type: Diesel

DETAILED INFORMATION

2020 UPDATES

- New Flooring throughout the boat to include new wood flooring in the salon and lower hall way. New Carpet in all state rooms.
- Enclosed Bridge wood has been sanded and recoated
- New Stovetop in the Galley
- New Salon Ice Maker
- New XM Weather
- New Interior Decor items to include, new rugs, new lamps in master state room, new mattress covers, new deck chairs, new crystal glassware, new towels.
- New Hot Water Heater
- New Air-conditioning Chillers
- New Washer and Dryer in the owners section of the yacht
- New seals on all exterior windows
- New upholstery on pilot house sofa and galley eat in table seating
- New Faucets in the Galley
- New Sofa in the Salon
- New 8 Blade Michigan Propellers
- New Trac stabilizer fins with full reservice
- New Bottom paint 4/2020

Salon

- Full-width 21'3" beam
- Finished wood bulkheads with high gloss finish in cherry
- Emperador Dark Marble stonework
- Carpeting
- Whisper wall headliner
- Decorative wood accents over the salon and dining area
- Custom designed decorative wood valance with Silhouette blinds in recessed pockets
- Polished curved stainless steel sliding door to aft deck
- Recessed wet bar with bottle and glass storage
- Plexiglass bottle and glass storage in side cabinets and bar storage
- Entertainment center including 50" plasma TV on lift with DVD/CD player and one touch RF remote control system, Blu-ray player and DVR
- Carbon monoxide detector
- Scotsman ice maker and refrigerator
- Fixed frameless windows with tinted safety glass
- Telephone outlet
- AC and DC LED light fixtures

- AC LED dimmable lights
- AC LED duplex outlets
- Custom sofa with storage
- Throw pillows
- Air conditioning dispersed through decorative valances, port and starboard
- Coffee table
- Custom end table with storage and lamp

Dining

- Custom dining table and six custom dining chairs
- U-Line wine cooler forward cabinet
- Carpet
- High gloss cherry wood
- Buffet cabinets on port and starboard of dining area
- Artwork display area between cabinets
- Dimmable Halogen lighting
- Whisper wall ceiling panels with decorative reveals
- Cherry columns separating the salon from the dining area
- Custom china storage

Galley

- Finished wood bulkheads with high gloss finish in cherry
- Tropic Brown granite counter tops and backsplash
- Whisper wall headliner
- Fixed frameless windows with tinted safety glass, window tinting
- Amtico floor – teak with 1/4" black walnut
- Sub-Zero upright AC refrigerator with freezer and ice maker, UPGRADE water and ice maker in door front
- AC 4-Burner ceramic cooktop
- Oven located under counter
- Microwave/convection oven hidden by matching cherry cabinetry door
- 1/2 HP Continuous feed garbage disposal
- Telephone outlet
- AC and DC LED light fixtures
- AC dimmable LED lights
- AC duplex outlets
- Jurassic Green granite dinette tabletop
- Storage under dinette and storage forward of dinette
- Dishwasher
- Wood inserts on appliance fascia (except refrigerator) to match interior wood finish

- SMX HVAC Compartment Controls
- Port and starboard pantograph doors
- Duette blinds on forward windows
- LCD TV
- Storage pantry

Day Head

- Pepeete Blue marble counter and backsplash
- Custom wall covering
- Plexi mirror overhead
- Towel bar
- Headhunter freshwater toilet
- High end faucet
- Recirculating fan
- AC and DC Led light fixtures
- AC duplex outlets
- Air conditioning vent

Lower Forward Companionway

- Carpeted floors
- Coffee/wine bar with Emperador Light marble counter and refrigerator behind door
- Whisperwall headliner
- Padded panel wall covering
- Portable fire extinguisher
- Washer/dryer hidden behind door
- DC light fixtures
- Lights at top and bottom of stairs
- Lighted stairway to lower deck
- Arched passage doors with door stops to master and guest staterooms
- Custom storage alcove within stairwell

Master Stateroom

- Full-width 21'3" beam
- Whisperwall padded panel bulkheads
- Cherry wood bulkheads with high gloss finish
- Carpeting
- Whisperwall headliner
- Upholstered berth base

- Decorative wood valance with fixed Roman shade and Duette blinds
- King sized berth with headboard and cedar lined storage underneath, accessed via pneumatic cylinders
- Whisperwall covered, curved wall section behind master berth with cherry wood, horizontal reveals
- HMC coil spring mattress, spread, throw pillows, pillows, pillow shams, mattress pad and sheets
- Port and starboard ventilating port lights with screens and four additional fixed portlights, for a total of six
- Bowed-front nightstands with drawers, plus a pull out shelf for writing
- Bowed-front built-in dressers, port and starboard, custom designed and raised for maximum storage capacity
- AM/FM audio access with local DVD/CD changer and a one touch master universal remote with RF control
- Flush mounted speakers in ceiling
- Custom wall mounted light fixtures flanking the master berth
- AC and DC light fixtures
- AC dimmable LED lights
- AC duplex outlets
- Telephone outlet
- Arched sketch faced interior passageway door to "his and hers" head
- Arched sketch faced door, with door stop, to companionway
- Full-length mirror
- Smoke detector
- DC low level LED lights
- Safe
- Twin cedar lined wardrobes with arched passage doors and automatic lights
- SMX HVAC Compartment Controls
- Carbon monoxide detector
- LCD TV

Master His and Hers Head

- Custom Emperador Light marble countertops and backsplashes
- Custom wallcoverings
- Custom Emperador Light marble tiles with White Thassos Select marble accent keys
- Custom wall sections and shower seat made of the same stone
- Plexi mirror overheads
- High gloss cherry storage cabinets
- Mirrors
- Enlarged granite shower with frameless doors on either side
- Headhunter freshwater toilets
- Recirculating fans

- AC and DC light fixtures
- AC duplex outlets
- Air conditioning vents
- Holding tank $\frac{3}{4}$ full indicator light

VIP Guest Stateroom

- Padded bulkhead
- Carpeting
- Whisper wall headliner
- Fluted wood valance with fixed Roman shade and Duette blinds with air conditioning dispersed through soffits
- Upholstered berth base
- HMC coil spring mattress, spread, throw pillows, pillow shams, pillows, mattress pad and sheets
- Ventilating portlight with screen
- Cedar lined hanging locker with arched door and automatic light
- Nightstand with drawers
- Full-length mirror
- AC and DC light fixtures
- AC dimmable LED lights
- AC duplex outlets
- AM/FM audio access with local DVD/CD changer and a one touch master universal remote with RF control
- Telephone outlet
- Private access to head by arched door
- LCD TV
- Smoke detector
- Mirrored aft bulkhead
- Boston Acoustics loudspeakers
- SMX HVAC Compartment Controls
- Carbon monoxide detector
- Private access to head
- Storage above portlight outboard and on aft bulkhead, in the form of blanket lockers

VIP Head

- Emperador Light marble tiles with Jurassic Green granite accent keys custom flooring
- Custom wall covering
- Plexi mirrored ceiling
- Jurassic Green granite countertop, backsplash and side splash with under mount sink
- Shower with sliding door

- Towel bars
- Storage cabinet with mirror doors
- Cherry wood base cabinet with storage and bowed fronts
- Plexi mirror around upper cabinet
- Linen locker
- Headhunter freshwater toilet
- 120 volt AC air freshener blower
- AC and DC light fixtures
- Air conditioning vent
- DC low level lights under toe kick
- Holding tank $\frac{3}{4}$ full indicator light

Bow Guest Stateroom

- Whisper wall padded bulkheads
- Carpeting
- Whisper wall headliner
- Twin crisscross berths
- Upholstered berth base
- Cedar lined hanging locker with automatic light
- Full-length mirror
- Audio system control, LCD keypad and a pair of Boston Acoustics loudspeakers
- LCD TV
- AC and DC light fixtures
- AC dimmable LED lights
- AC duplex outlets
- Private access to head
- Smoke detector
- Carbon monoxide detector
- DC low level LED lights under berth
- Telephone outlet
- Dresser
- SMX HVAC Compartment Controls

Bow Head

- Emprador Dark marble tile with White Thassos Select keys flooring
- Custom wall covering
- Mirrored ceiling – UPGRADE
- Emperador Dark marble countertop, backsplash and side splash with under mount sink
- Tub with sliding door
- Towel bars

- Storage cabinetry with mirror doors
- Genuine wood base cabinet with storage and bowed fronts
- Plexi mirror around upper cabinet
- Linen locker
- Headhunter freshwater toilet
- 120 volt AC air freshener blower
- AC and DC light fixtures
- Air conditioning vent
- DC low level lights under toe kick
- Holding tank $\frac{3}{4}$ full indicator light

Starboard Guest Stateroom

- Whisper wall padded bulkheads
- Carpeting
- Whisper wall headliner
- Twin crisscross berths
- Upholstered berth base
- Cedar lined hanging locker with automatic light
- Full length mirror
- Audio system control, LCD keypad and a pair of Boston acoustics loudspeakers
- LCD TV
- AC and DC light fixtures
- AC dimmable LED lights
- AC duplex outlets
- Private access to head
- Smoke detector
- Carbon monoxide detector
- DC low level lights under berth
- Telephone outlet
- Dresser
- SMX HVAC Compartment Controls

Starboard Guest Head

- White Thassos with Emperador Light keys flooring
- Custom wall covering
- Mirrored ceiling – UPGRADE
- Emperador Light marble counter top, back splash and side splash with under mount sink
- Shower with sliding door
- Towel bars
- Storage cabinetry with mirror doors

- Genuine wood base cabinet with storage and bowed fronts
- Plexi mirror around upper cabinet
- Linen locker
- Headhunter freshwater toilet
- 120 volt AC air freshener blower
- AC and DC light fixtures
- Air conditioning vent
- DC low level lights under toe kick
- Holding tank $\frac{3}{4}$ full indicator light

Sky Lounge

- Main helm
- Stidd helm and companion chairs with foot rests
- Solid teak with sawn walnut strip flooring
- Larger table for port side lounge
- Custom sofa for starboard side
- Wet bar with sink, refrigerator, ice maker and three bar stools
- Pop-up TV in aft corner of bar
- Stone counter at bar
- Stone table top at lounge
- Electrically actuated window at bar
- AC outlets
- Dimmable LED lighting
- Custom overhead grab bar
- Access to Galley and boat deck from Enclosed Flybridge/Sky Lounge

Helm and Electronics

- Caterpillar Electronic Single Lever Controls
- Hatteras control monitor that interfaces with the CAT engines and all pumps and fuel systems
- ABT Trac Stabilizers
- ABT Bow Thruster
- ABT Stern Thruster
- 2 x ACR Searchlights
- KVH Tracphone
- SeaTel Sat TV (2012)
- KVH VSat (2013)
- Wave WiFi (2013)
- AIS (2012)
- Weather Works (2012)

- 2 x Furuno Navnet Monitors
- Furuno Charting
- Furuno BB Color Sounder
- Furuno 72 Mile Radar
- NVTi Thermal Camera Night Vision
- Simrad AP25 Autopilot
- 2 x ICOM ICM602 VHF Radios
- Ritchie Compass
- Simrad IS15 Depth/Speed
- Simrad IS15 Wind
- Garmin 7616 XSV color touch screen GPS Chart plotter

Boat Deck

- Large dingy area
- Custom hoop rails around dinghy area
- MarQuipt 1,500 lb. davit
- 104 sq. ft. dinghy area
- Built-In fiberglass cabinet with two Gaggenau electric grills
- Built-In U-Shaped lounge with table
- Deck lighting
- Custom electronics mast
- Ladder and hatch through sky lounge exterior overhang for easy top access
- Teak stairs to lower aft deck
- Fold out helm station in wing board with gears, throttles, thruster control and start/stop buttons

Aft Deck

- AC duplex outlet
- Dual molded fiberglass steps, port and starboard, to swim platform with lights and teak treads
- Molded fiberglass with teak treads to flybridge
- Curved polished stainless steel sliding door to salon
- Audio system control, LCD keypad and a pair of marine waterproof loudspeakers
- Molded lounge with Sunbrella – covered polyfoam cushions and storage underneath with cover
- High gloss teak accent rail around aft deck seating
- Door with stairwell to crew quarters/engine room
- Custom oversized aft deck high gloss teak table with cover and custom inlay
- Three High gloss teak chairs with cushions
- Custom stainless steel gates with water jetted center design

- Flip down TV in forward, starboard ceiling
- Teak sole

Sport Deck

- Molded fiberglass with non skid sole
- Freshwater wash down outlet with hose connection and Hatteras patented quick disconnect
- Welded and polished 316L removable stainless steel hoop rails
- Hand held hot/cold cockpit shower with cover
- Molded-in fiberglass steps with DC lights to aft deck
- Two Pop-up cleats
- Boarding ladder, centerline, swim platform
- Weather tight Pacific Coast door to crew quarters and engine room
- Swim platform and steps to aft deck
- Steps to aft deck done with teak treads

Crew Quarters

- Carpeted cabins
- Full head with shower stall
- Amtico flooring in crew companionway
- Stacked washer/dryer
- Two Refrigerators
- Freezer
- Engine Room access
- Aft Deck access
- Swim/Sport Deck access through Pacific Offshore door

Captain's Cabin with walk around double berth and single berth above:

- Nightstands
- Halogen lighting
- Cedar lined locker
- Storage

Crew Cabin:

- Over/under bunks with Pullman upper that stores when not in use
- Halogen lighting
- Storage locker

Miscellaneous

- Finished wood bulkheads with high gloss polyester finish in genuine cherry
- All hardware chrome on brass or welded and polished stainless steel
- Swim platform (New non-skid paint Dec. 2018) with welded and polished stainless steel reboarding ladder
- Welded and polished stainless steel anchor chute and roller
- 110 lb. Plow anchor, anchor line and deck hawse pipe
- Windlass 4,000 lb. hydraulic with 300 feet of stainless steel chain with deck mounted control switches
- Integrated hydraulic digital 35 hp thruster/stabilizer system with 7.5 square foot fins
- Six Polished stainless steel spring line cleats with chafing strips, through bolted in aluminum backing plates
- Bow and stern polished stainless steel cleats, through bolted in aluminum backing plates
- Polished 1 1/4" stainless steel rails on bow, side deck and flybridge, drilled and tapped in aluminum backing plates
- Two Remote controlled searchlights
- Fog bell
- Dual air horns
- Zincs on rudders and shafts
- Bow and stern staffs with pennant and ensign
- Black braided mooring lines
- Alloy 22 high strength propeller shafts with zincs
- Manganese bronze dripless shaft and rudder seals
- Life Jackets
- Life Ring
- 13 Portable fire extinguishers UL approved in compliance with United States Coast Guard and ABYC standards
- Stainless steel trim tabs
- Manganese bronze struts
- Stainless steel rudders
- 8-Blade NIBRAL propellers
- Central vacuum with five outlets
- MarQuipt 1,500 lb. fully hydraulic davit
- Holding tank with sewage pump and overboard discharge
- Freshwater wash down on bow with Hatteras quick disconnect
- Black fenders
- Two Pop-up cleats on swim platform
- Fender tracks
- Deck plates for fuel and water fills and waste pump out
- Heavy duty bronze engine couplings
- Engine and generator exhaust exits through hull sides near transom
- Generator exhaust separators
- Rope locker storage hatch on bow deck

- 1,400 gpd Sea Recovery water maker
- Deep storage on port and starboard sides for bow storage
- Pacific Coast door to crew quarters from sport deck
- Wireless remote control for bow-mounted Cable master units
- Custom double radar mast
- **All windows re-sealed and re-caulked December 2018**
- **New Non-skip paint on swim platform December 2018**
- **New buff and wax on the hull December 2018**
- **New bottom paint and zincs December 2018**
- **Two New AC Chillers February 2018**
- **New raw water and fresh water pumps on board for spares**

Electrical

- 20-gallon and 30-gallon water heaters amidships; 6-gallon water heater aft for crew
- 2 x 24V banks of heavy duty 12V marine batteries, 4 per bank, mounted in fire retardant fiberglass boxes
- Gel/lead acid compatible 240 volt automatic programmable battery charger, 50/60Hz
- Automatic battery paralleling system with switch at control console
- 2 x 100 amp Transformer-connected, retractable shore cords, covered by hatch, forward, with wireless remote control for Cable master
- AC and DC light fixtures
- Battery control panels with fuses and isolation switches
- DC electronics panels with magnetic circuit breakers
- AC distribution panels with magnetic circuit breakers
- AC switching panel with source selector switches, digital volt meter, ammeter, frequency meter, generator start/stop controls, voltage boost tap switch and interlock selector breakers
- Computer controlled ethernet monitoring system with LCD touch screen display providing visual and audible signals for engines, gears, generators, high bilge water, fire warning in engine compartment, fire extinguisher discharge in engine compartment, AC power loss, smoke detectors, all tank level indications, low battery voltage, alternator failure, battery charger failure, bilge pump control and run indication, holding tank pump control and run indication, and carbon monoxide detectors. A history log is maintained for critical alarms and trends may be set up to view various parameters with respect of time. Additional monitoring points may be added to the system economically and easily.
- Navigational lights, U.L. certified to the United States Coast Guard and ABYC specifications
- Ground fault protection on AC receptacles and lighting circuits
- NEW 2018-Chilled water air conditioning with reverse cycle heating, with soft starting AC compressors, automatically staged and individually controlled with SMX controls in each compartment
- SSB radio ground screen laminated in cabin top
- Telephone/CATV inlet, one each, forward

- Telephone and CATV shoreline cord, one each
- TV antenna, omnidirectional
- 2nd 100 amp Retractable shore power cord – (UPGRADE)

Engine and Mechanical

- Twin Caterpillar C32 1650 hp main engines (Starboard Hours 3,559, Port Hours 3,567)
- Twin Onan 27.5 kW generators with full sound enclosures (Starboard Hours 4,446, Port Hours 4,702)
- Water manifold blocks with centralized shutoff valve for sinks and showers
- Pultruded fiberglass rudder shelf with stainless steel rudder tie bar
- AC LED lights
- DC lights
- DC exhaust blowers
- AC ventilation blowers
- Variable speed air induction Delta T fans ducted from flybridge sides, capable of producing positive engine room pressure for engine air supply
- FM200 fixed fire extinguishing system for engine/generator compartment with automatic and remote manual controls plus audible and visual discharge signals
- Polyethylene water lines
- Electric fuel transfer system with filtration and dry tank protection for pump (2)
- Fresh water fill hose for engines and generator
- AC compressed air system with air line and regulator
- Dockside water inlets with pressure regulating valve, automatic dockside tank fill and Hatteras patented quick disconnect
- 24V DC bilge and sump pumps, six @ 3700 gph, one @ 2200 gph with heavy duty float switches and protective guards
- Bronze/chrome ball valves thru-bolted in solid fiberglass on all underwater thru-hull fittings with electrical bonding throughout
- 230 volt AC freshwater pump, with pressure tanks located in strategic areas and central charcoal filter with back flush capabilities
- Fiberglass water tanks, constructed with bronze fittings and materials which comply with the requirements of Title 21 for food and drug
- Sewage holding tank with 230 volt AC sewage pump, plumbed for dockside pump out with $\frac{3}{4}$ full display and alarm as part of system monitor
- 110 volt AC oil changing system for engines, generators and gears with Hatteras patented quick disconnect
- Sealed shower sump, two each
- Electric fuel priming pumps, 24 volt DC, engines
- Welded and polished 316L stainless steel overhead grab rails
- AC distribution panels
- DC distribution panels
- Painted polyurethane engine room and bilges

- United States Coast Guard Marine listed fuel lines
- Discharge sea chests, stainless steel steering tie bar with pivoting self aligning ball joint connection at all cylinder and tie bar connections
- Insulation in deck
- Gray water tanks, (2) plumbed, 126 gallons each, with 230 volt AV sewage pump, plumbed for dockside pump out with $\frac{3}{4}$ full display and alarm as part of systems monitor
- Air conditioning compressors, chilled water, (2) four ton units
- 2 x 100 amp transformer connected, retractable shore power cords

Exclusions

- All artwork within the boat
- All Anne Glass decor items through out the boat
- The Boston Whaler pull behind tender
- Wave Runner
- Owners personal effects

Mechanical Disclaimer

Engine hours are as of the date of the original listing and are a representation of what the listing broker is told by the owner and/or actual reading of the engine hour meters. The broker cannot guarantee the true hours. It is the responsibility of the purchaser and/or his agent to verify engine hours, warranties implied or otherwise and major overhauls as well as all other representations noted on the listing brochure.

Disclaimer

The Company offers the details of this vessel in good faith but cannot guarantee or warrant the accuracy of this information nor warrant the condition of the vessel. A buyer should instruct his agents, or his surveyors, to investigate such details as the buyer desires validated. This vessel is offered subject to prior sale, price change, or withdrawal without notice.

Exclusions

Owner's personal belongings.

Disclaimer

The Company offers the details of this vessel or yacht in good faith but cannot guarantee or warrant the accuracy of this information nor warrant the condition of the vessel. A buyer should

instruct his representatives, agents, or his surveyors, to investigate such details as the buyer desires validated. This vessel or yacht is offered subject to prior sale, price change, or withdrawal without notice.

PHOTOS

1



2



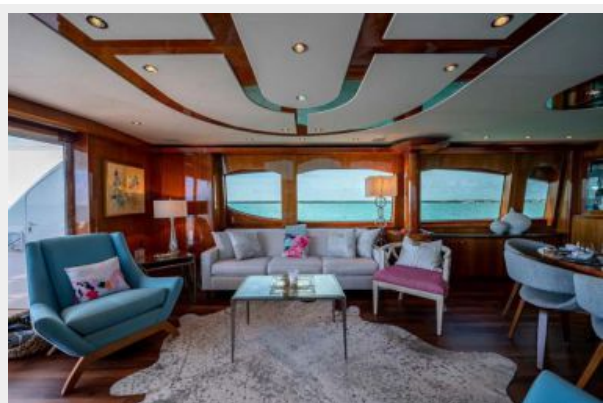
3



4



5 salon



6 salon



7 salon



8 salon



9 salon



10 salon aft



11 salon



12 dining



13 dining



14 dining forward



15 dining



16 dining aft



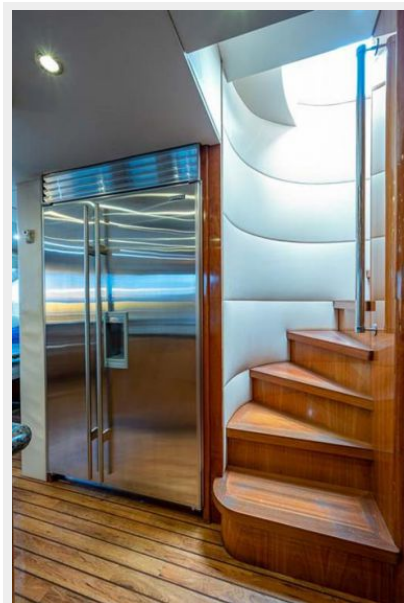
17 galley



18 galley



19b galley



19a galley



20 galley



21 galley



22 galley



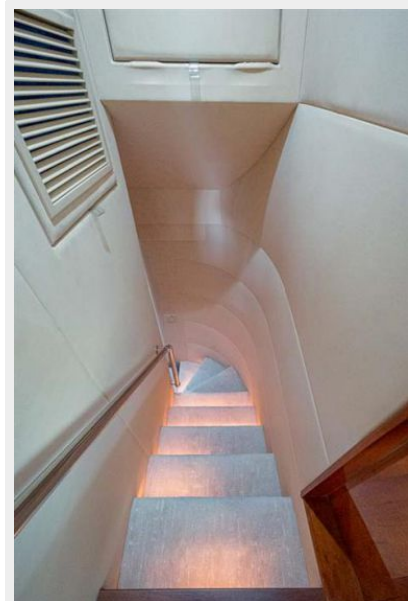
23 galley



24 day head



25 Lower Fwd companionway



26 Companionway and laundry



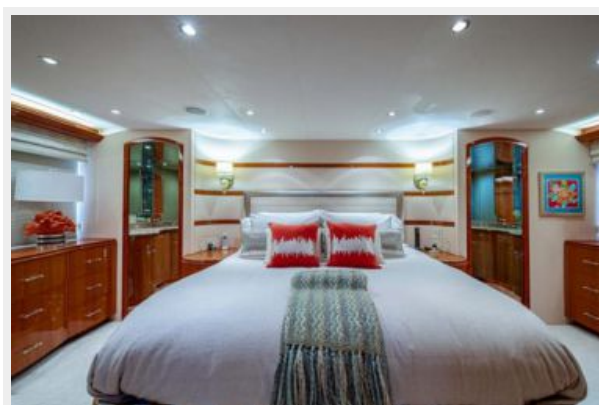
27 master



27a master



28 master



29 master



30 master



31 master



32



33



34



35



36



37



38



39



40 vip



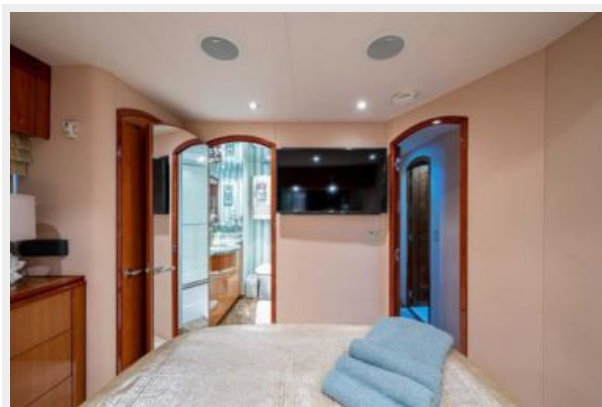
41 vip



42 vip



43 vip



44 vip



45 vip head



47 bow gs



48 bow gs



49 bow gs



50 bow gs



51 bow gs



52



53



54 stbd gs



55 stbd gs



56 stbd gs



57



58



59 sl



60 sl



61



62 sl



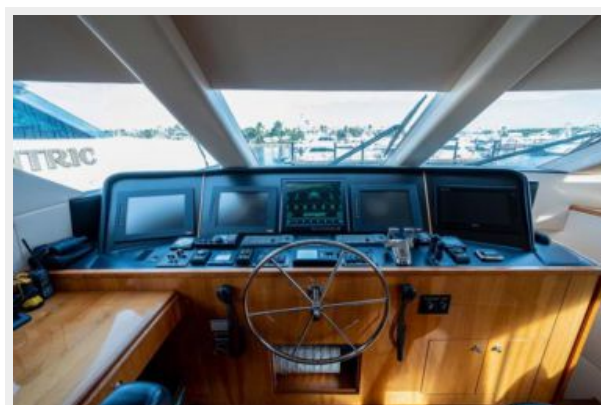
63 sl



64 sl



65 hel



66 helm



67 helm seats



68 fly



69 fly



70 fly



71 fly



72 bow



73 bow



74 bow



75 bow



76



77



78



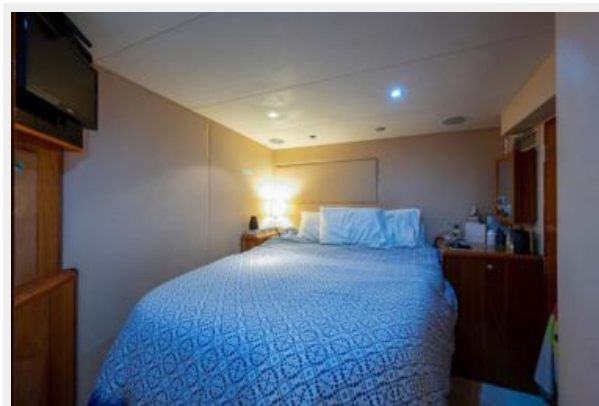
79



80



81 crew



82 crew



83 crew



84 crew



85 crew



86



87



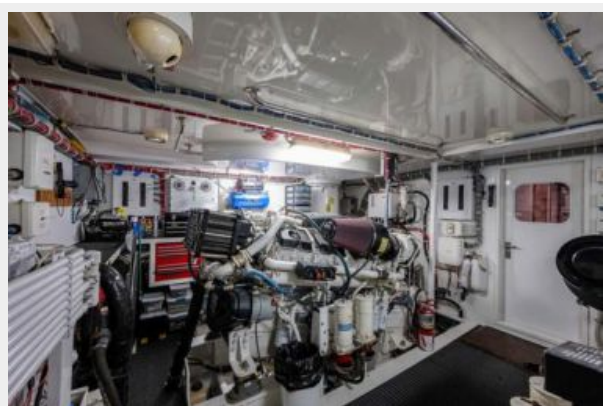
88



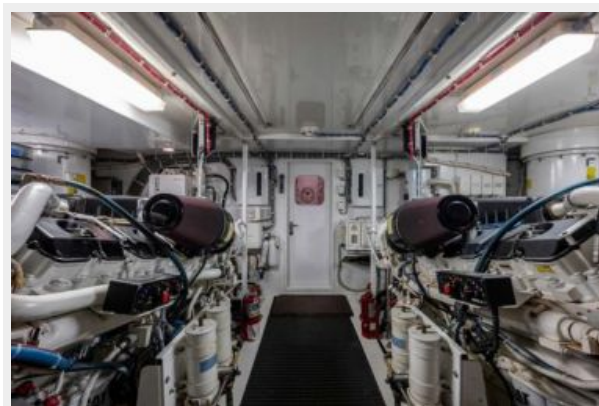
89



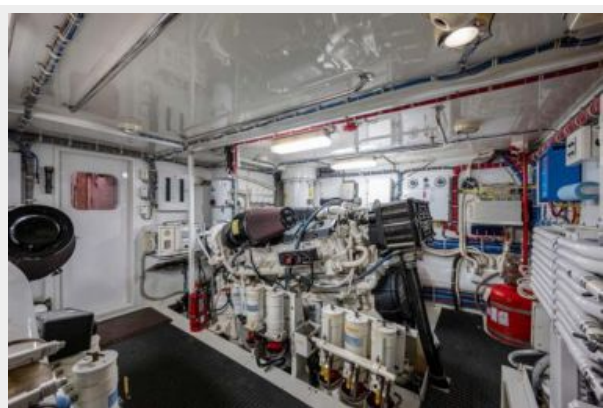
90



91



92



93



94a



94b



94c



95



96



97



CONTACTS

Andrey Shestakov, leading yacht broker of the sales department of Shestakov Yacht Sales Inc. Shestakov Yacht Sales Inc., the official representative of the Miami/Fort Lauderdale FL headquarters.

Contact details

Email:
andrey@shestakovyachtsales.com

Web: shestakovyachtsales.com/en/

Telephones

USA: **+1(954)274-4435**

Office hours

Monday – Saturday: **9:00 - 21:00 EDT**

Sunday: **closed**

Address



Harbour Towne Marina, 850 NE 3rd St,
STE 213, Dania, FL 33004