

AVANTI — HATTERAS



Builder: HATTERAS

Year Built: 2005

Model: Motor Yacht

Price: PRICE ON APPLICATION

Location: United States

LOA: 100' 0" (30.48m)

Beam: 22' 6" (6.86m)

Max Draft: 6' 3" (1.91m)

Our experienced yacht broker, Andrey Shestakov, will help you choose and buy a yacht that best suits your needs **AVANTI — HATTERAS** from our catalogue. Presently, at Shestakov Yacht Sales Inc., we have a wide variety of yachts available on our sale's list. We also work in close contact with all the big yacht manufacturers from all over the world.

If you would like to buy a yacht **AVANTI — HATTERAS** or would like help answering any questions concerning purchasing, selling or chartering a yacht, please call **+1(954)274-4435**

TABLE OF CONTENTS

| | |
|------------------------------|----|
| TABLE OF CONTENTS | 2 |
| SPECIFICATIONS | 7 |
| Overview | 7 |
| Basic Information | 7 |
| Dimensions | 7 |
| Speed, Capacities and Weight | 7 |
| Accommodations | 8 |
| Hull and Deck Information | 8 |
| Engine Information | 8 |
| DETAILED INFORMATION | 9 |
| AVANTI | 9 |
| Exclusions | 13 |
| Disclaimer | 13 |
| PHOTOS | 14 |
| DJI_0231 | 14 |
| DJI_0211 | 14 |
| DJI_0087 | 14 |
| DJI_0259 | 14 |
| DJI_0271 | 14 |
| DJI_0186 | 14 |
| DJI_0249 | 15 |
| DJI_0197 | 15 |
| DSC03357 | 15 |
| DSC03356 | 15 |
| DSC03360 | 15 |
| DSC03352 | 15 |
| DSC03350 | 16 |
| DSC03351 | 16 |

| | |
|----------|----|
| DSC03347 | 16 |
| DSC03344 | 16 |
| DSC03345 | 16 |
| DSC03324 | 16 |
| DSC03318 | 17 |
| DSC03334 | 17 |
| DSC03321 | 17 |
| DSC03325 | 17 |
| DSC03331 | 17 |
| DSC03320 | 17 |
| DSC03332 | 18 |
| DSC03329 | 18 |
| DSC03330 | 18 |
| DSC03317 | 18 |
| DSC03316 | 18 |
| DSC03323 | 18 |
| DSC03315 | 19 |
| DSC03314 | 19 |
| DSC03310 | 19 |
| DSC03312 | 19 |
| DSC03245 | 20 |
| DSC03248 | 20 |
| DSC03243 | 20 |
| DSC03241 | 20 |
| DSC03215 | 20 |
| DSC03239 | 20 |
| DSC03217 | 21 |
| DSC03223 | 21 |
| DSC03208 | 21 |

| | |
|----------|----|
| DSC03213 | 21 |
| DSC03219 | 22 |
| DSC03225 | 22 |
| DSC03212 | 22 |
| DSC03236 | 22 |
| DSC03227 | 23 |
| DSC03230 | 23 |
| DSC03211 | 23 |
| DSC03228 | 23 |
| DSC03210 | 24 |
| DSC03218 | 24 |
| DSC03233 | 24 |
| DSC03226 | 24 |
| DSC03224 | 24 |
| DSC03232 | 24 |
| DSC03229 | 25 |
| DSC03216 | 25 |
| DSC03342 | 25 |
| DSC03220 | 25 |
| DSC03338 | 25 |
| DSC03343 | 25 |
| DSC03335 | 26 |
| DSC03336 | 26 |
| DSC03341 | 26 |
| DSC03263 | 26 |
| DSC03266 | 26 |
| DSC03265 | 26 |
| DSC03272 | 27 |
| DSC03260 | 27 |

| | |
|----------|----|
| DSC03271 | 27 |
| DSC03264 | 27 |
| DSC03258 | 27 |
| DSC03254 | 27 |
| DSC03256 | 28 |
| DSC03255 | 28 |
| DSC03201 | 28 |
| DSC03252 | 28 |
| DSC03257 | 28 |
| DSC03250 | 28 |
| DSC03186 | 29 |
| DSC03187 | 29 |
| DSC03189 | 29 |
| DSC03197 | 29 |
| DSC03191 | 30 |
| DSC03200 | 30 |
| DSC03193 | 30 |
| DSC03194 | 30 |
| DSC03379 | 31 |
| DSC03378 | 31 |
| DJI_0134 | 31 |
| DJI_0162 | 31 |
| DSC03362 | 31 |
| DJI_0163 | 31 |
| DJI_0143 | 32 |
| DJI_0173 | 32 |
| DSC03361 | 32 |
| DJI_0136 | 32 |
| DJI_0142 | 32 |

| | |
|-----------------|----|
| DJI_0164 | 32 |
| DSC03281 | 33 |
| DSC03284 | 33 |
| DSC03286 | 33 |
| DSC03287 | 33 |
| DSC03291 | 34 |
| DSC03289 | 34 |
| DSC03283 | 34 |
| DSC03290 | 34 |
| DSC03275 | 35 |
| DSC03278 | 35 |
| DSC03309 | 35 |
| DSC03306 | 35 |
| DSC03294 | 35 |
| DSC03305 | 35 |
| DSC03293 | 36 |
| DSC03292 | 36 |
| CONTACTS | 37 |
| Contact details | 37 |
| Telephones | 37 |
| Office hours | 37 |
| Address | 37 |

SPECIFICATIONS

Overview

2005 100' Hatteras AVANTI has spared no expense and is ready for her next owners. Full-time captain & maintained with an open checkbook operation. She is a must-see for anyone looking for a 100' plus yacht that is ready to go. Below are some of her notable features. Please contact the listing broker to arrange your private showing today!

- Highly Sought After 5 Stateroom Layout - Sleeps 10 owners and Guest plus crew.
- Custom Hot Tub on Bridge - With Custom bar
- Vessel Wide Audio/ Visual System with iPad Controllers
- All Enclosed Decks - With Air Conditioning
- Custom Inflatable Slide.
- Grill and Frozen Drink Machine - FlyBridge.
- Twin MTU 16V-2000-
- Twin Onan 45KW Generators.
- Naiad stabilizers.
- 32' Boston Whaler Outrage with Twin Mercury Verado 275 hp Outboards, Fish Rigged, Tow-Behind Tender

Basic Information

Category: Motor Yacht

Model Year: 2005

Year Built: 2005

Country: United States

Dimensions

LOA: 100' 0" (30.48m)

Beam: 22' 6" (6.86m)

Max Draft: 6' 3" (1.91m)

Clearance: 21' 5" (6.53m)

Speed, Capacities and Weight

Displacement: 270000 Pounds

Water Capacity: 840 Gallons

Holding Tank: 370 Gallons

Fuel Capacity: 5025 Gallons

Accommodations

Total Cabins: 5

Total Heads: 6

Hull and Deck Information

Hull Material: Fiberglass

Engine Information

Engines: 2

Manufacturer: MTU

Model: 16V-2000

Engine Type: Inboard

Fuel Type: Diesel

DETAILED INFORMATION

AVANTI

Salon

- Custom American cherry wood throughout
- Custom sculptured neutral carpet
- L-shaped leather sofa with full storage beneath
- (2) Oval walnut & honey end tables with lamps & matching coffee table
- Sunken alabaster marble bar with (3) upholstered club chairs, Scotsman refrigerator & icemaker, stainless sink, bottle/glass storage & marble flooring
- Samsung LED 55" TV, Blue Ray player, Yamaha receiver, and Direct TV
- Custom window treatment with Hunter Douglas duet blinds
- Roman pleated valances along the crown molding soffits
- Custom overhead w/Mitsubishi mirror, walnut & honey joinery w/halogen lighting
- Overhead flush-mounted throughout with dimmers & surround sound speakers
- Formal dining with 72" circular walnut/honey table dining table
- (8) Upholstered wood dining chairs
- Overhead soffit with mirror & lighting above table
- Built-in radius buffets, port & starboard sides
- Forward bulkhead with art niche and storage cabinets
- Cherry columns with moldings
- Freeman glass door, port

- Custom Artwork Throughout
- Foyer & Day Head:
 - Marble entryways, port & starboard
 - Marble vanity, custom sink & fixtures
 - Pocket door to galley

Galley

- Sub-Zero 700 Series refrigerator/freezer w/drawers below
- GE Monogram/Convection oven (2014)
- GE Monogram Induction stovetop & oven (2014)
- GE Monogram dishwasher (2014)
- GE Monogram trash compactor (2014)
- Single stainless steel sinks & garbage disposal
- Raised cherry settee with expansive leather seating area
- Marble top table w/storage below, cabinets behind (2014)
- Samsung 32" LED TV
- (8) Oversized framed out windows w/wooden blinds

- Granite countertops
- Perko flooring
- Radius framed pocket doors, fore & aft
- Sub-Zero refrigerator/freezer side by side w/4 drawers below
- Island station w/storage cabinets & drawers below
- Overhead storage cabinets w/doors

Master Stateroom

- Arched double door entrance
- King-sized bed w/custom spread, shams & upholstered headboard
- Mirrored bulkhead behind bed
- Built-in cherry dressers w/18 drawers, port & stbd
- Built-in nightstands, port & stbd, w/crystal lamps
- Vanity/desk w/marble top, shelved storage cabinet, 6 drawers & bookcase
- Custom overhead soffit w/mirror, cherry wood & lighting
- (2) Cedar lined walk-in closets, port & stbd (port w/safe)
- Samsung 40" LED Smart TV, Blue Ray player, Direct TV HD receiver, (5) Speakercraft 6" speakers
- Home Theater equipment stored in port closet
- (6) Oversized s/s portlights w/shades, port & stbd w/pleated blinds
- His & Her Bath w/stone vanity top, mirrored backsplash, cabinets, large shower w/ glass doors, custom fixtures & marble flooring
- Custom Bidet System added to "Her" side of the His/Her Head with Remote control
- (2) Two large walk-In Closets

VIP Stateroom

- Accessed via staircase forward of galley
- Queen island bed on hydraulic pistons w/storage access below
- Custom upholstered headboard
- Cedar lined hanging locker
- Built-in drawers on both sides of bed
- Samsung 40" TV & DVD Private bath w/onyx marble vanity, sink, Mitsubishi mirror, alabaster white marble floor, large shower w/gold fixtures

Pilothouse Electronics

- Garmin Radar unit (2014)
- FLIR Infrared Night Vision Camera
- Furuno FAR2127 BB/Radar w/trackball keypad
- (2) Garmin GPS 8215
- Northstar 6.4" 6000i color GPS/Plotter w/GPS / WAAS antenna
- AIS Vessel Safety System
- Simrad AP 5002 Autopilot

- Garmin Chart Plotter (2014)
- Touchscreen monitor (2014)
- Hi-Definition Satellite TV dome (2014)
- Naiad stabilizer control
- American bow thruster control
- VEI 15" sunlight display
- KVH HD7 w/TriAmerica LMB
- Lorex CCTV camera system
- Icom VHF radio
- B&G 2020 depth/ wind speed/ speed indicator
- (2) ACR spotlight controls

Flybridge Electronics

- FLIR Infrared Night Vision Camera
- Furuno 2nd station trackball keypad
- Northstar GPS head
- Icom 602 VHF radio
- Simrad AP50 - 2nd station
- BEI Sunlight 15" display
- B&G Windwatch
- DDC monitoring system
- Naiad stabilizer control
- American bow thruster control
- ACR spotlight mounted on mast
- Aqua Signal floodlights mounted on hardtop
- Geosat Solutions Mobile Wi-Fi

Flybridge Equipment

- Expansive flybridge w/Pipewelder's custom hardtop
- Acrylic Flybridge enclosure - EZ2CY
- (3) Stidd helm chairs
- 36" TV on drop-down from hard top
- Center island bar w/3 bar stools, Sub Zero ice maker, Sub-Zero refrigerator
- L-shaped upholstered seating/lounges, port & stbd, w/storage below
- Pedestal corner table
- Margarita machine
- Wing stations, port & stbd
- Built-in storage cabinets aft of bridge enclosure w/turbo STS gas grill & storage
- Coast Spa circular hot tub/Jacuzzi & sun pad next to Jacuzzi
- (2) New 2015 Sea-Doo SeaSpark Waverunners (2015)
- Custom Swing Chair for Flybridge
- Custom Flybridge Railing with Privacy Panels
- (2) Two section Flybridge Aft Deck Canopy with EZ install System

Deck Equipment

- Custom Inflatable Slide From Aft Deck of Bridge
- Marquipt Sea Stairs storage
- Bow shore cord inlets
- (10) Underwater lights & underwater camera
- (8) Walk-around deck lights on each side
- Quartz lights
- Hardtop w/4-sided EZ2CY enclosure
- Custom aft deck lighting, hardtop lighting & and searchlight on hardtop
- Quick disconnect flushing system (run a/c when out of water)
- Foredeck bench seat
- Maxwell 6000 anchor windlass w/wildcat
- (2) Maxwell 3500 warping winches
- Nautical Structures Euro 2500lb davit
- (4) Polished stainless steel removable handrails (2014)
- Tide Ride 8-step ladder
- Mid-ship boarding gates
- Swim ladder
- (2) Givens 8-man life raft
- Freshwater washdown

Aft Deck Equipment

- 25,000 BTU Dedicated Air Conditioning System
- Teak aft deck
- Boarding gates, port & stbd
- Large centerline cushioned bench seat w/storage beneath
- (2) Cherry hi-gloss tables anchored on chrome pedestals & 3 back chairs
- Built-in cabinets w/Scotsman refrigerator & storage cabinet
- Eskimo ice maker/chipper in stbd cabinet
- Wing doors to full walk-around decks, port & stbd
- Circular 8-step staircase to bridge deck
- Maxwell 3500 warping winches, port & stbd
- 36" TV on dropdown
- (8) Overhead lights & 4 stereo speakers
- Quartz lighting
- Emergency escape hatch from crew/engine room
- Teak swim platform w/removable hoop rails, pop-up cleats, dinghy stand-off whip receptacles
- (10) Underwater lights
- Entrance to crew quarters & engine room access

Electrical Equipment

- Twin Onan 45KW generators - (Approx 8454 hrs 02/17)
- Mastervolt Mass 24/75 battery chargers
- 24v battery charger for electronics
- (2) 24v battery chargers for generators
- (2) Jefferson transformers
- (2) Newmar converters

Engine Room Details

- Twin Detroit Diesel/MTU 16V2000 - 2000HP ea
- Cruiseair chilled water 15 ton A/C system, 3 compressors
- Sea Recovery 1500 GPD watermaker
- Transmissions ZF 4.8 to 1
- Stainless steel 4 ½ " shafts
- Nibral 7-bladed propellers (54" x 77.5")
- Blowers 24v, 1-Delta T 230v
- Bilge pumps - 3 automatic
- (3) AO Smith hot water heaters
- Oil change system (2) 15v pumps for mains, generators & gears
- Mechanical gauges in engine room
- (2) Head Hunter fresh water pumps
- Lube oil tank, fresh & waste - 365 gallons total
- Fuel priming system
- Holding tank w/discharge pump
- Delta T reversible fan system
- Head Hunter 200 GPD sewage treatment system
- All Heat Exchangers, Aftercoolers, and Pumps on engines have been serviced or replaced as needed. (2019)
- Both Engines BoreScoped (2018) and easily passed inspection

Exclusions

Owner's personal belongings.

Disclaimer

The Company offers the details of this vessel or yacht in good faith but cannot guarantee or warrant the accuracy of this information nor warrant the condition of the vessel. A buyer should instruct his representatives, agents, or his surveyors, to investigate such details as the buyer desires validated. This vessel or yacht is offered subject to prior sale, price change, or withdrawal without notice.

PHOTOS

DJI_0231



DJI_0211



DJI_0087



DJI_0259



DJI_0186



DJI_0271



DJI_0249



DJI_0197



DSC03357



DSC03356



DSC03360



DSC03352



DSC03350



DSC03351



DSC03347



DSC03344



DSC03345



DSC03324



DSC03318



DSC03334



DSC03321



DSC03325



DSC03331



DSC03320



DSC03332



DSC03329



DSC03330



DSC03317



DSC03316



DSC03323



DSC03314



DSC03315



DSC03310



DSC03312



DSC03245



DSC03248



DSC03243



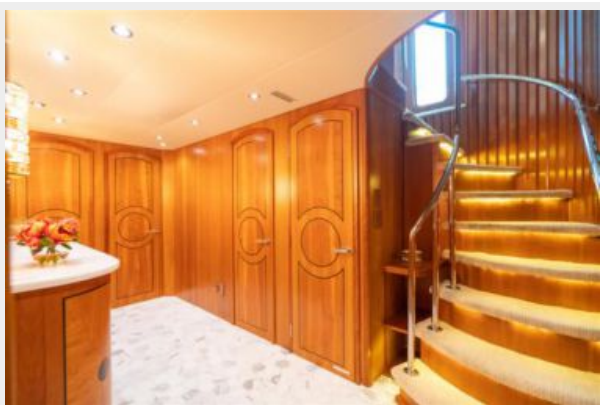
DSC03241



DSC03215



DSC03239



DSC03217



DSC03223



DSC03208



DSC03213



DSC03219



DSC03225



DSC03212



DSC03236



DSC03227



DSC03230



DSC03211



DSC03228



DSC03210



DSC03218



DSC03233



DSC03226



DSC03224



DSC03232



DSC03229



DSC03216



DSC03342



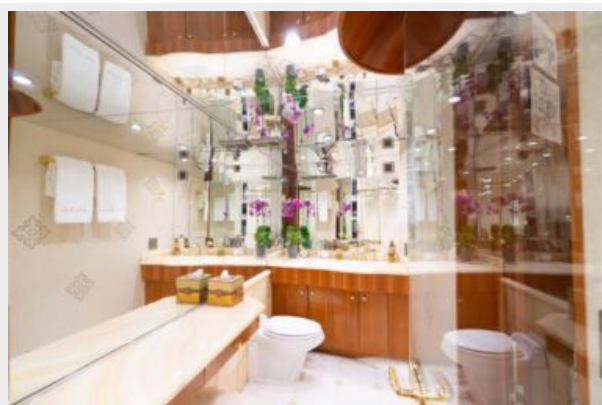
DSC03220



DSC03338



DSC03343



DSC03335



DSC03336



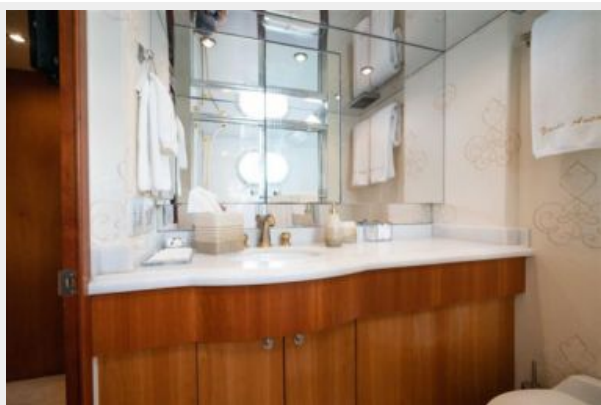
DSC03341



DSC03263



DSC03266



DSC03265



DSC03272



DSC03260



DSC03271



DSC03264



DSC03258



DSC03254



DSC03256



DSC03255



DSC03201



DSC03252



DSC03257



DSC03250



DSC03186



DSC03187



DSC03189



DSC03197



DSC03191



DSC03200



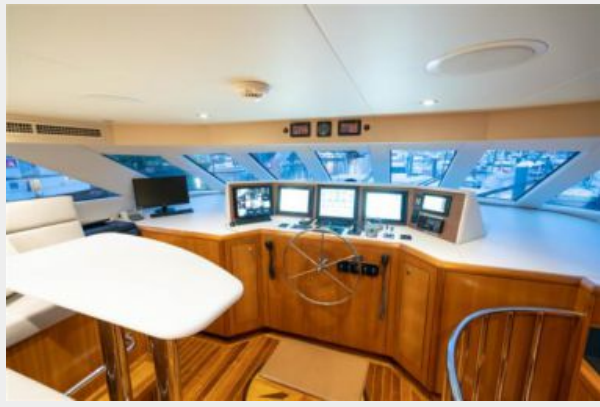
DSC03193



DSC03194



DSC03379



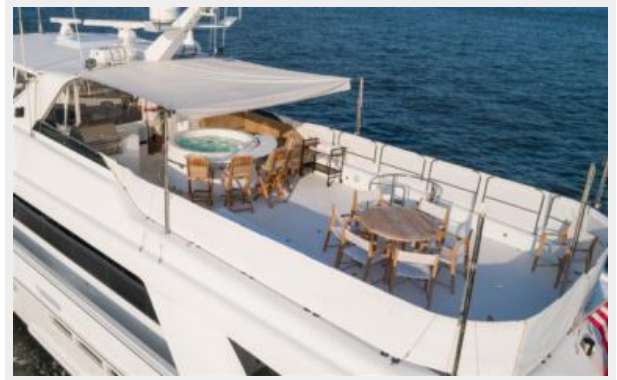
DSC03378



DJI_0134



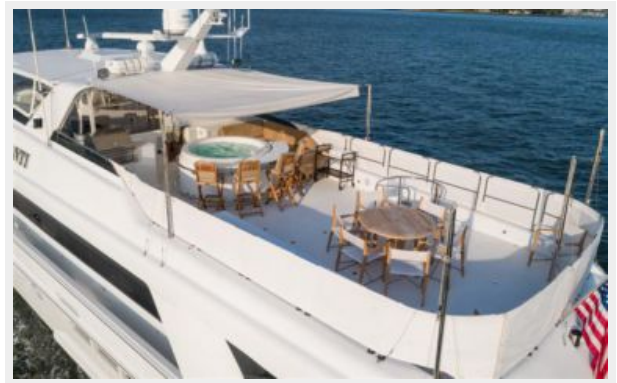
DJI_0162



DSC03362



DJI_0163



DJI_0143



DJI_0173



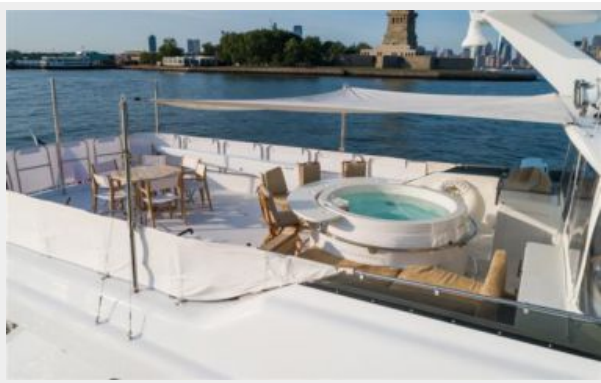
DSC03361



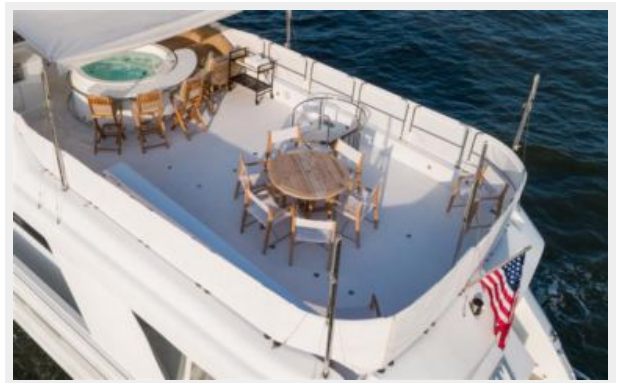
DJI_0136



DJI_0142



DJI_0164



DSC03284



DSC03281



DSC03286



DSC03287



DSC03291



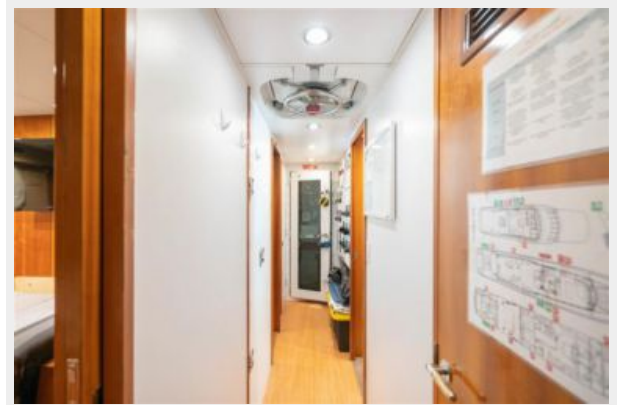
DSC03289



DSC03283



DSC03290



DSC03275



DSC03278



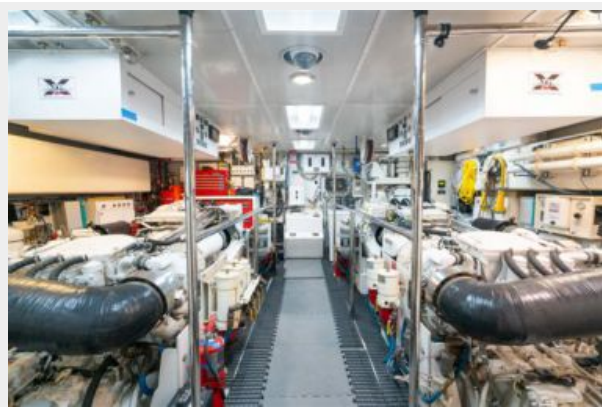
DSC03309



DSC03306



DSC03294



DSC03305



DSC03293



DSC03292



CONTACTS

Andrey Shestakov, leading yacht broker of the sales department of Shestakov Yacht Sales Inc. Shestakov Yacht Sales Inc., the official representative of the Miami/Fort Lauderdale FL headquarters.

Contact details

Email: andrey@shestakovyachtsales.com

Web: shestakovyachtsales.com/en/

Telephones

USA: +1(954)274-4435

Office hours

Monday – Saturday: **9:00 - 21:00** EDT

Sunday: **closed**

Address



Harbour Towne Marina, 850 NE 3rd St,
STE 213, Dania, FL 33004