

## SAN BERNARDO — HEESEN YACHTS



**Builder:** HEESEN YACHTS

**Year Built:** 2010

**Model:** Mega Yacht

**Price:** PRICE ON APPLICATION

**Location:** Spain

**LOA:** 147' 8" (45.00m)

**Beam:** 29' 7" (9.00m)

**Min Draft:** 0' 0" (0.00m)

**Max Draft:** 9' 0" (2.72m)

**Cruise Speed:** 12 Kts. (14 MPH)

**Max Speed:** 24 Kts. (28 MPH)

Our experienced yacht broker, Andrey Shestakov, will help you choose and buy a yacht that best suits your needs **SAN BERNARDO — HEESEN YACHTS** from our catalogue. Presently, at Shestakov Yacht Sales Inc., we have a wide variety of yachts available on our sale's list. We also work in close contact with all the big yacht manufacturers from all over the world.

If you would like to buy a yacht **SAN BERNARDO — HEESEN YACHTS** or would like help answering any questions concerning purchasing, selling or chartering a yacht, please call **+1(954)274-4435**

---

# TABLE OF CONTENTS

---

TABLE OF CONTENTS	2
SPECIFICATIONS	3
Overview	3
Basic Information	4
Dimensions	4
Speed, Capacities and Weight	4
Accommodations	4
Hull and Deck Information	5
Engine Information	5
DETAILED INFORMATION	6
DETAILED DESCRIPTION OF MY SAN BERNARDO	6
Exclusions	16
Disclaimer	16
PHOTOS	17
Palma Boat Show 2021	17
CONTACTS	25
Contact details	25
Telephones	25
Office hours	25
Address	25

---

# SPECIFICATIONS

---

## Overview

---

SAN BERNARDO is a fine example of a pedigree made-in-Netherlands yacht, in full aluminium and fully equipped with the professional ship equipment.

The yacht has been in private use for the last five years and is presented in immaculate condition.

The yacht is just shy of 45 meters and is spacious and luxurious, easily accommodating 12 guests onboard in five cabins and one unique convertible sky lounge on the upper deck. There are extensive areas for leisure activities, including lounge areas on aft and bow, al-fresco dining options, a generous sundeck with large jacuzzi and wet bar, sun loungers and spacious beach club. With generous storage the yacht provides an exciting array of water sports toys and tenders.

The planing aluminium hull allows for an exhilarating top speed of 24 knots, while cruising speed is an impressive 18 knots. For greater economy, a gentle economical speed of 12 knots results in a fuel consumption of only 220 L/H (both engines and generators). The range of SAN BERNARDO at 12 knots is 3,200 nautical miles.

The yacht's refurbished interior includes soft tones and high quality materials creating a sense of tranquillity and enhancing all the natural light. All cabins are soundproofed providing absolute privacy for all onboard.

### Key Features

- Classic Heesen aluminium semi-displacement hull, elegant and fast
- Meticulously maintained yacht with fully refreshed interior and stylish, immaculate exterior
- Stabilisers at anchor and underway, ensuring a smooth and comfortable time onboard
- Upper saloon convertible into a sixth cabin
- Beach club and tender garage with ample storage
- Up-to-dated audio and visual equipment throughout the yacht
- Extensive refit 2017/2018

---

## Basic Information

---

<b>Category:</b> Mega Yacht	<b>Model Year:</b> 2010
<b>Year Built:</b> 2010	<b>Refit Year:</b> 2018
<b>Country:</b> Spain	<b>Vessel Top:</b> Open
<b>Fly Bridge:</b> Yes	<b>Cockpit:</b> Yes

---

## Dimensions

---

<b>LOA:</b> 147' 8" (45.00m)	<b>LWL:</b> 124' 9" (38.00m)
<b>Beam:</b> 29' 7" (9.00m)	<b>Min Draft:</b> 0' 0" (0.00m)
<b>Max Draft:</b> 9' 0" (2.72m)	<b>Clearance:</b> 50' 11" (15.50m)

---

## Speed, Capacities and Weight

---

<b>Cruise Speed:</b> 12 Kts. (14 MPH)	<b>Cruise Speed Range:</b> 3200
<b>Max Speed:</b> 24 Kts. (28 MPH)	<b>Max Speed Range:</b> 1280 Kts.
<b>Displacement:</b> 692251.50268 Pounds	<b>Gross Tonnage:</b> 458 Pounds
<b>Water Capacity:</b> 4226.752832 Gallons	<b>Holding Tank:</b> 1558.6151068 Gallons
<b>Fuel Capacity:</b> 16907.011328 Gallons	<b>Fuel Consumption:</b> 58.11785144 Gallons

---

## Accommodations

---

<b>Total Cabins:</b> 5	<b>Total Berths:</b> 8
<b>Sleeps:</b> 12	<b>Total Heads:</b> 7
<b>Captain Cabin:</b> True	<b>Crew Berths:</b> 9
<b>Crew Sleeps:</b> 9	<b>Crew Heads:</b> 5

---

## Hull and Deck Information

---

**Hull Material:** Aluminum

**Deck Material:** Teak

**Hull Configuration:** Semi-Displacement

**Hull Color:** Cream

**Hull Finish:** Aluminum

**Hull Designer:** Omega Architects

**Exterior Designer:** Omega Architects

**Interior Designer:** Omega Architects

---

## Engine Information

---

**Engines:** 2

**Manufacturer:** MTU

**Model:** 16V4000M90

**Engine Type:** Inboard

**Fuel Type:** Diesel

---

# DETAILED INFORMATION

---

## DETAILED DESCRIPTION OF MY SAN BERNARDO

---

### 1. MAIN CHARACTERISTICS

<b>TYPE</b>	Motor Yacht
<b>HULL NO</b>	YN 15044
<b>BUILDER</b>	Heesen
<b>NAVAL ARCHITECT</b>	Heesen
<b>INTERIOR DESIGN</b>	Omega Architects
<b>YEAR</b>	2010
<b>REFIT</b>	2018
<b>CLASSIFICATION</b>	Previously ABS; built to Lloyd's
<b>CONSTRUCTION</b>	Aluminum Hull, Aluminum Superstructure, Teak Decks
<b>HULL COLOR</b>	Cream
<b>SUPERSTRUCTURE COLOR</b>	White
<b>FLAG</b>	Marshall Islands
<b>ENGINES</b>	2 x 3,647 Hp MTU 16V4000M90; 3,130 hours approx
<b>GT</b>	458

### 2. DIMENSIONS

**LOA** 44,17m / 144'9"

**BEAM** 9,00m / 29'5"

**DRAFT** 2,72m / 8'9"

### 3. SPEED AND RANGE

**MAXIMUM SPEED** 24 knots @ 2100 RPM

**CRUISING SPEED/ECONOMICAL SPEED** 18 knots @ 1670 RPM / 12 knots @ 1225 RPM

<b>FUEL CONSUMPTION</b>	220 L/H @ 12 knots, 900 L/H @ 18 knots, 1400 L/H @ 24 knots
<b>RANGE</b>	3200 nm @ 12 knots, 1280 nm @ 18 knots, 1080 nm @ 24 knots

#### 4. CAPACITIES

<b>ACCOMMODATION</b>	10 guests in 5 Cabins + 2 guests in convertible sky lounge
<b>CREW</b>	9 crew in 5 cabins
<b>FUEL</b>	64,000 liters (4 main, 1 day tank)
<b>FRESH WATER</b>	16,000 liters (4 tanks)
<b>WATER MAKERS</b>	2 x 602 liters/per hour
<b>LUBE OIL</b>	850 liters
<b>WASTE OIL</b>	750 liters
<b>HYDRAULIC OIL</b>	350 liters
<b>HOLDING TANK</b>	5,900 liters (grey+black water)

#### 5. ACCOMMODATION AND LAYOUT

<b>LOWER DECK</b>	<ul style="list-style-type: none"> <li>2 x Double cabins with en-suite bathroom</li> <li>2 x Twin cabins with en-suite bathroom</li> <li>Crew accommodation</li> <li>Crew mess</li> <li>Engine room</li> <li>Tender garage and toy storage</li> </ul>
<b>MAIN DECK</b>	<ul style="list-style-type: none"> <li>Full beam Master Cabin with large king-size bed, walk-in wardrobe, lobby office and bathroom with a shower and a bathtub</li> <li>Spacious salon with lounge and dining area</li> <li>Day toilet</li> <li>Main Galley</li> <li>Pantry</li> </ul>

	Exterior aft deck lounge area
<b>UPPER DECK</b>	Sky lounge cinema which can be converted into a 6 <sup>th</sup> cabin
	Bathroom with toilet and shower
	Exterior aft deck seating area with shading option
	Exterior dining table for up to 12 with large oval table and semi-circular sofas
	Wheelhouse
	Server room
	Exterior seating area on the foredeck
	Nicely hidden workshop and storage on the foredeck
<b>SUN DECK</b>	Sunbathing set-up aft
	Jacuzzi 1200L with heating and hydromassage
	Bar
	Dining table for up to 8
	Control station
<b>CAPTAIN &amp; CREW</b>	1 x captain's cabin with en-suite bathroom
	4 x 2-Bunk crew cabins on lower deck, forward

## 6. MECHANICAL EQUIPMENT

<b>ENGINES</b>	2 x MTU 16V4000M90, 2,720 KW at 2,100 RPM
<b>ENGINE HOURS</b>	3,122 (Port) & 3,128 (Starboard) – 05/06/2021
<b>GEARBOXES</b>	ZF, model BW 7550 P (PTO axial, vertically off-set)
<b>DRIVE</b>	Direct
<b>PROPELLERS</b>	2 x Schaffran five 1,380 mm blades
<b>GENERATORS</b>	2 x 100 kW John Deere 50 Hz
<b>GENERATORS HOURS</b>	9,884 (Port) & 7,218 (Starboard) - 05/06/2021
<b>ELECTRICITY</b>	Three phase, 230/400 Volts, 3 wire, 1,500 rpm
<b>SHORE POWER</b>	400 Volts, 3 phase 1 x for TV/Radio 1 x for Telephone 1 x for Fresh water
<b>BATTERIES</b>	5 in total, various types, GMDSS, emergency etc.
<b>CHARGES</b>	8 in total, make Mass, different types 1 Main unit for transom door & gangway, side folding ladder 1 x Unit for fore-



<b>HYDRAULICS</b>	crane operation1 x Unit for steering system
<b>AIR</b>	Heinen & Hopman2 x Chiller Units2 x Sea-water pumpsTemperature
<b>CONDITIONING</b>	controlled by thermostats fitted in each room
<b>VENTILATION</b>	2 ventilation ribs on both sides of the engine room2 x ventilators/extractors on the starboard
<b>WATER MAKER</b>	2 X HEM type HEM 25/1400, new membranes in 2018
<b>WATER SYSTEM</b>	2 x Electric hydrophor LowaraUVA treatment installation Silver ionizing system Carbon filterSoftener
<b>HOT WATER</b>	2 x Electric boilers 200L eachCircular system all over the boat
<b>TOILET SYSTEM</b>	Jet vacuum system
<b>SEWAGE TREATMENT</b>	Hamann A6
<b>FUEL SEPARATOR</b>	Westfalia type OSD 2-02-137
<b>STABILISER</b>	VT Naiad Marine system 820, stabilization at anchor and underway
<b>BOW THRUSTER</b>	HRP 1000 – 80 kW hydraulically driven

## 7. NAVIGATION EQUIPMENT

<b>RADAR</b>	Furuno Black box x band radar, 12 kW with 6,5 scanner, type FAR-2117BB
<b>COMPASSES GPS</b>	Furuno Satellite Compass/GPS Navigat X MK1 C.Plath GyrocompassMX 420 Navigation System
<b>AUTOPILOT</b>	Navipilot 4000
<b>DGPS RECEIVER</b>	AP NAVIGATOR MK12
<b>AIS</b>	Furuno Universal AIS FA - 150
<b>NAVTEX</b>	Furuno Navtex NX-700
<b>DEPTH SOUNDER</b>	Furuno dual frequency color video, type FCV-1100L
<b>WIND/SPEED LOG</b>	3 x B&G Hydra-2000
<b>ELECTRONIC CHART</b>	Transas NS-3000
<b>MONITORING</b>	Main monitoring system in wheelhouse3 x Fixed cameras, 1 x each side & 1 x aft1 x Motorized camera in engine room1 x Night vision camera mounted on Mast NUTi
<b>BNWAS</b>	Watchkeeper

<b>WEATHER STATION</b>	4 x Furuno RD-30 repeater crew mess/captain cabin/engineer cabin/garage
<b>SHIPS COMPUTER NETWORK</b>	Heinen & Hopman
<b>FOG HORN</b>	Kahlenberg model T1
<b>SEARCH LIGHTS</b>	2 x ARC Electronics RCL-600
<b>WINDSCREEN WIPERS</b>	5 x marine type windscreen wipers Hollex 235 KS

## 8. COMMUNICATION EQUIPMENT

<b>SATCOM</b>	SeaTel
<b>INMARSAT-C</b>	Sailor TT-3606E
<b>VHF</b>	2 x handheld VHF radio Jotron TR20 1 x Sailor simplex/semi-duplex RT-50221 x Sailor duplex VHF station RT-47222 x Icom simplex/semi-duplex VHF station for both wing stations IC-M591 x Icom IC-M421 simplex/duplex VHF crew mess
<b>LOUDHAILER</b>	Raytheon RAY-430
<b>INTERNET</b>	VSAT Seatel 1 x D-link DWR-921 modem 4G Mobile Internet 10 x internet signal booster throughout the boat
<b>AV SYSTEM</b>	Plex Media Server with Philips Pronto control panels
<b>TELEPHONE SYSTEM</b>	20 x portable phones Gigaset

## 9. DECK EQUIPMENT

<b>ANCHOR CAPSTAN</b>	2 x electric stainless steel Staalart CAS23-17,5.ED
<b>ANCHOR CHAINS</b>	2 x 150 m chains Ø 17,5 mm Control box for 230V/200VAC 50 Hz 3ph-24VDC for anchor winch dual direction dual speed 2 x stainless steel chain stoppers mounted on baseplate of the anchor winch 2 x tensionless square

	chain roller	2 x stainless steel devil claws
<b>BOLLARDS</b>		8 x stainless steel bollards on the main deck, 2 x on the swim platform
<b>SIDE BOARDING LADDER</b>		1 x electric/hydraulic operated, stainless steel+wood
<b>SWIM LADDER</b>		1 x Stainless steel swim ladder
<b>GANGWAY</b>		Hydromar, 5,95 meters length, hydraulic
<b>CRANE/WINCHES</b>		1 x hydraulic foredeck crane Hydromar 2 x winches for tender in the garage
<b>ELEVATOR</b>		1 x Lodige Dumbwaiter from maindeck to upper deck

## 10. ENTERTAINMENT EQUIPMENT

Entertainment system video:

- 5 x Apple TV in each cabin
- Plex Media Server with Philips Pronto control panels in each cabin and salon
- Satellite TV & Internet

Entertainment system audio:

- Internal Bluetooth network
- Plex audio server
- Ipod airplay
- Google Chromecast audio

Guest Double Cabins:

- 2 x Samsung 27" LED 7 series
- 1 x Philips Pronto control panel
- 10 x built in speakers (5 in each cabin)
- 2 x Apple TV

Guest Twin Cabins:

- 2 x Samsung 32" LED Full HD
- 1 x Philips Pronto control panel
- 10 x built in speakers (5 in each cabin)

- 2 x Apple TV

#### Main Salon

- 1 x Samsung 55" LED Full HD
- 1 x Linn Classik Movie System
- 1 x Apple TV
- 1 x Philips Pronto TSU9800 docking station
- 1 x Philips Pronto control panel
- 7 x inbuilt ceiling speakers

#### Master Cabin:

- 1 x Samsung 55" LED Full HD
- 1 x Philips Pronto control panel
- 9 x inbuilt ceiling speakers

#### Skylounge:

- 1 x Samsung 32" LED Full HD
- 1 x Philips Pronto control panel
- 2 x inbuilt ceiling speakers
- 

#### Sundeck:

- 4 x JL audio external speakers
- 2 x JL audio subwoofer

#### Crew mess and crew cabins:

- 1 x Sony 32 "
- 6 x inbuilt ceiling speakers

#### Captain's cabin:

- 1 x Scepter 22"LCD
- 1 x inbuilt ceiling speakers

Deck:

- 12 x inbuilt ceiling speakers JL audio (4 main deck, 2 fore deck, 2 upper deck, 2 sun deck)

## 11. GALLEY & LAUNDRY EQUIPMENT

Galley & pantry equipment:

- 1 x Gaggenau oven/grill
- 1 x GIGA ceramic cooktop
- 1 x GIGA professional oven
- 1 x GIGA Tapenyaki Griddle
- 1 x Miele dishwasher
- 2 x Foster Gastro refrigerator 600 litres (compressor in engine room)
- 1 x Foster Gastro freezer 600 litres (compressor in engine room)
- 1 x Liebherr Comfort refrigerator 80 litres
- 1 x Eurocave wine cooler for 175 bottles
- 1 x Hoshizaki Ice Maker

Laundry:

- 2 x Miele washer professional
- 2 x Miele drier professional

Public areas:

- 2 x Frigonautica fridge in Master cabin and lowerdeck desk corridor
- 1 x GAMKO professional bar fridge 150 ltrs in Skylounge
- 1 x Hoshizaki icemaker in Skylounge bar

Exterior decks:

- 2 x Frigonautica fridge on the sundeck
- 1 x Hoshizaki icemaker on the sundeck

## 12. TENDERS & WATERTOYS

### TENDER

- 1 x Novurania 650, 190 HP, inboard Volvo Penta D220 (in the garage)
- 1 x Novurania 360TR, outboard Yamaha Four Stroke 20HP (on the foredeck)

## WATER SPORTS

- 2 x Yamaha Waive Runner VX1100 Jetski 100 HP

## 13. SAFETY EQUIPMENT

### FIRE FIGHTING

- Fire detector Minerva Marine T2000 with control station in the wheelhouse
- 3 x CO2 system in the engine room and galley
- 25 x portable powder fire-extinguishers
- 5 x foam fire-extinguishers

### SAFETY

- 4 x Zodiac liferafts 12 pax each
- 4 x lifebuoys
- 28 x SOLAS inflatable lifejackets
- 25 x SOLAS immersion suits
- Safety Plan approved by MCA
- 1 x 406 EPIRB
- 2 x TRON 9Ghz SART
- 1 x rescue boat Novurania 360TR

## REFIT SUMMARY

Extensive refit was done in 2017 and 2018, which included the following major works such as:

## HULL and DECK:

- Fully new paint hull in cream color
- Fully new paint superstructure in white color
- Teak deck renew (100%), sanding
- Change deck lights to 120 dots LEDs
- Antifouling Trilux 33 mic International – 4 layers at the ship's bottom

## TECH

- PLEX media server installation
- New Gigaset phones
- All new TVs (Samsung LED Full HD)
- New audio and subwoofers installed on the sun deck

## MACHINERY

- Water pumps replacement
- New water purifying system: silver water ionizer, carbon filter, watersoftener
- MTU service every 250 hours
- Generators service
- 12 x bilge drying system valves change
- New emergency bilge pump
- Watermakers serviced
- New compressors for Lowara freezer
- New fresh water pumps
- New seachest baskets
- 

## EXTERIOR

- New sound system installation (JL audio sound and bas)
- New awning added to the sundeck (extending up to 2.7 meters)
- Exterior furniture re-upholstered with Sunbrella fabric
- New teak exterior armchairs with Sunbrella cushions
- New marble tables at the bar on the sun deck
- New LED lights

## INTERIOR

- All new carpets made by silk, wool & bamboo fibers (by Oliver Treutlein, Germany)
- New Italian custom-made furniture by Ludovica Masceroni (sofas in salon and master bedroom, armchairs in salon and skylounge, chairs in the dining area)

- New lamps by Ludovica Masceroni
- New custom-made wall panels in salon, master bedroom and guest cabins
- Chemical cleaning of curtains and mattresses every year
- Marble polishing in all bathrooms
- New furniture at WC and showers

## Exclusions

---

Owner's personal belongings.

## Disclaimer

---

The Company offers the details of this vessel or yacht in good faith but cannot guarantee or warrant the accuracy of this information nor warrant the condition of the vessel. A buyer should instruct his representatives, agents, or his surveyors, to investigate such details as the buyer desires validated. This vessel or yacht is offered subject to prior sale, price change, or withdrawal without notice.



# PHOTOS

## Palma Boat Show 2021











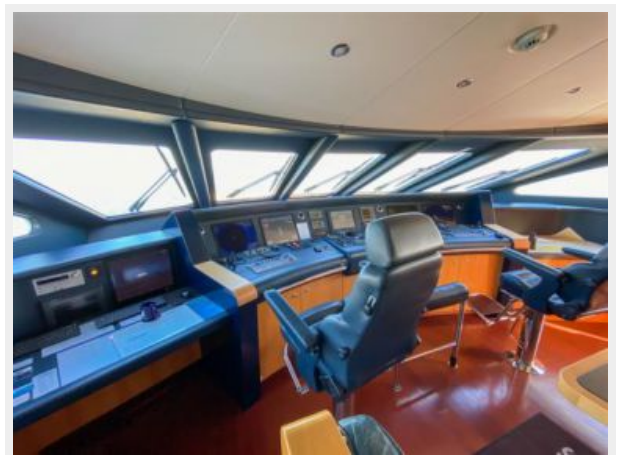
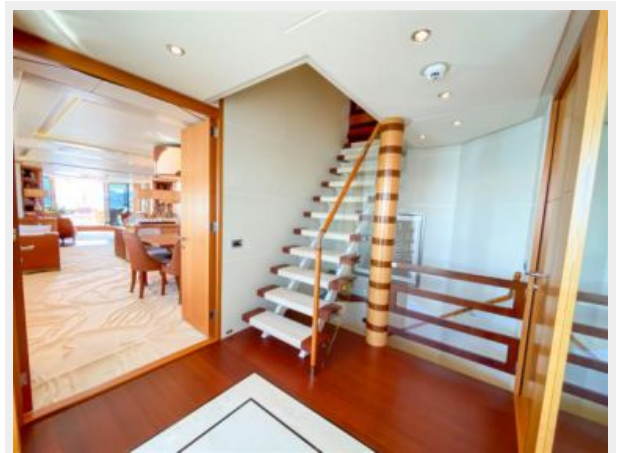














# CONTACTS

---

Andrey Shestakov, leading yacht broker of the sales department of Shestakov Yacht Sales Inc. Shestakov Yacht Sales Inc., the official representative of the Miami/Fort Lauderdale FL headquarters.

## Contact details

---

Email: [andrey@shestakovyachtsales.com](mailto:andrey@shestakovyachtsales.com)

Web: [shestakovyachtsales.com/en/](http://shestakovyachtsales.com/en/)

## Telephones

---

USA: +1(954)274-4435

## Office hours

---

Monday – Saturday: **9:00 - 21:00** EDT

Sunday: **closed**

## Address

---



Harbour Towne Marina, 850 NE 3rd St,  
STE 213, Dania, FL 33004