

SAN BERNARDO — HEESEN YACHTS



Судостроитель: HEESEN YACHTS

Год постройки: 2010

Модель: Мега-яхта

Цена: **ЦЕНА ЯХТЫ ПО ЗАПРОСУ**

Местонахождение: Spain

Длина общая: 147' 8" (45.00m)

Ширина: 29' 7" (9.00m)

Мин. осадка: 0' 0" (0.00m)

Макс. осадка: 9' 0" (2.72m)

Крейс. скорость: 12 Kts. (14 MPH)

Макс. скорость: 24 Kts. (28 MPH)

Купить **SAN BERNARDO — HEESEN YACHTS** а также выбрать подходящую вам яхту из нашего каталога яхт вам поможет опытный яхтенный брокер Андрей Шестаков. На сегодняшний день компания **Shestakov Yacht Sales Inc.** имеет большое количество яхт в собственном списке продаж, а также тесно сотрудничает со всеми крупными яхтенными производителями по всему миру.

Для того чтобы купить яхту **SAN BERNARDO — HEESEN YACHTS** а также проконсультироваться по любому вопросу связанному с покупкой, продажей, чартером яхт позвоните по телефону **+7(918)465-66-44**.

ОГЛАВЛЕНИЕ

ОГЛАВЛЕНИЕ	2
ХАРАКТЕРИСТИКИ	3
Обзор	3
Основная информация	4
Размеры	4
Скорость, вместимость и масса	4
Размещение	5
Корпус и палуба	5
Информация о двигателе	5
ПОДРОБНОЕ ОПИСАНИЕ	6
DETAILED DESCRIPTION OF MY SAN BERNARDO	6
Исключения	16
Отказ от ответственности	16
ФОТОГРАФИИ	17
Palma Boat Show 2021	17
КОНТАКТЫ	25
Контактная информация	25
Телефоны	25
Время работы	25
Адрес	25

ХАРАКТЕРИСТИКИ

Обзор

SAN BERNARDO is a fine example of a pedigree made-in-Netherlands yacht, in full aluminium and fully equipped with the professional ship equipment.

The yacht has been in private use for the last five years and is presented in immaculate condition.

The yacht is just shy of 45 meters and is spacious and luxurious, easily accommodating 12 guests onboard in five cabins and one unique convertible sky lounge on the upper deck. There are extensive areas for leisure activities, including lounge areas on aft and bow, al-fresco dining options, a generous sundeck with large jacuzzi and wet bar, sun loungers and spacious beach club. With generous storage the yacht provides an exciting array of water sports toys and tenders.

The planing aluminium hull allows for an exhilarating top speed of 24 knots, while cruising speed is an impressive 18 knots. For greater economy, a gentle economical speed of 12 knots results in a fuel consumption of only 220 L/H (both engines and generators). The range of SAN BERNARDO at 12 knots is 3,200 nautical miles.

The yacht's refurbished interior includes soft tones and high quality materials creating a sense of tranquillity and enhancing all the natural light. All cabins are soundproofed providing absolute privacy for all onboard.

Key Features

- Classic Heesen aluminium semi-displacement hull, elegant and fast
- Meticulously maintained yacht with fully refreshed interior and stylish, immaculate exterior
- Stabilisers at anchor and underway, ensuring a smooth and comfortable time onboard
- Upper saloon convertible into a sixth cabin
- Beach club and tender garage with ample storage
- Up-to-dated audio and visual equipment throughout the yacht
- Extensive refit 2017/2018

Основная информация

Тип судна: Мега-яхта	Модельный год: 2010
Год постройки: 2010	Год обновления: 2018
Страна: Spain	Верх: Open
Открытая палуба мостика: Да	Кубрик: Да

Размеры

Длина общая: 147' 8" (45.00m)	Длина по ватерлинии: 124' 9" (38.00m)
Ширина: 29' 7" (9.00m)	Мин. осадка: 0' 0" (0.00m)
Макс. осадка: 9' 0" (2.72m)	Трапы: 50' 11" (15.50m)

Скорость, вместимость и масса

Крейс. скорость: 12 Kts. (14 MPH)	Дальность на крейсерской скорости: 3200
Макс. скорость: 24 Kts. (28 MPH)	Дальность на макс. скорости: 1280 Kts.
Водоизмещение: 692251.50268 Pounds	Чистый вес: 458 Pounds
Вместимость воды: 4226.752832 Gallons	Вместимость сточного бака: 1558.6151068 Gallons
Объем топливного бака: 16907.011328 Gallons	Расход топлива: 58.11785144 Gallons

Размещение

Всего кают: 5

Всего коек: 8

Спальные места: 12

Всего ком. состава: 7

Каюта капитана: Да

Койки экипажа: 9

Спальных мест экипажа: 9

Комм. состав экипажа: 5

Корпус и палуба

Материал корпуса: Aluminum

Материал палубы: Teak

Комплектация корпуса: Semi-Displacement

Цвет корпуса: Cream

Отделка корпуса: Aluminum

Дизайнер корпуса: Omega Architects

Дизайнер экстерьера: Omega Architects

Дизайнер интерьера: Omega Architects

Информация о двигателе

Двигатели: 2

Производитель: MTU

Модель: 16V4000M90

Тип двигателя: Inboard

Тип топлива: Diesel

ПОДРОБНОЕ ОПИСАНИЕ

DETAILED DESCRIPTION OF MY SAN BERNARDO

1. MAIN CHARACTERISTICS

TYPE	Motor Yacht
HULL NO	YN 15044
BUILDER	Heesen
NAVAL ARCHITECT	Heesen
INTERIOR DESIGN	Omega Architects
YEAR	2010
REFIT	2018
CLASSIFICATION	Previously ABS; built to Lloyd's
CONSTRUCTION	Aluminum Hull, Aluminum Superstructure, Teak Decks
HULL COLOR	Cream
SUPERSTRUCTURE COLOR	White
FLAG	Marshall Islands
ENGINES	2 x 3,647 Hp MTU 16V4000M90; 3,130 hours approx
GT	458

2. DIMENSIONS

LOA 44,17m / 144'9"

BEAM 9,00m / 29'5"

DRAFT 2,72m / 8'9"

3. SPEED AND RANGE

MAXIMUM SPEED 24 knots @ 2100 RPM

CRUISING SPEED/ECONOMICAL SPEED 18 knots @ 1670 RPM / 12 knots @ 1225 RPM

FUEL CONSUMPTION	220 L/H @ 12 knots, 900 L/H @ 18 knots, 1400 L/H @ 24 knots
RANGE	3200 nm @ 12 knots, 1280 nm @ 18 knots, 1080 nm @ 24 knots

4. CAPACITIES

ACCOMMODATION	10 guests in 5 Cabins + 2 guests in convertible sky lounge
CREW	9 crew in 5 cabins
FUEL	64,000 liters (4 main, 1 day tank)
FRESH WATER	16,000 liters (4 tanks)
WATER MAKERS	2 x 602 liters/per hour
LUBE OIL	850 liters
WASTE OIL	750 liters
HYDRAULIC OIL	350 liters
HOLDING TANK	5,900 liters (grey+black water)

5. ACCOMMODATION AND LAYOUT

LOWER DECK	<ul style="list-style-type: none"> 2 x Double cabins with en-suite bathroom 2 x Twin cabins with en-suite bathroom Crew accommodation Crew mess Engine room Tender garage and toy storage
MAIN DECK	<ul style="list-style-type: none"> Full beam Master Cabin with large king-size bed, walk-in wardrobe, lobby office and bathroom with a shower and a bathtub Spacious salon with lounge and dining area Day toilet Main Galley Pantry

	Exterior aft deck lounge area
UPPER DECK	Sky lounge cinema which can be converted into a 6 th cabin
	Bathroom with toilet and shower
	Exterior aft deck seating area with shading option
	Exterior dining table for up to 12 with large oval table and semi-circular sofas
	Wheelhouse
	Server room
	Exterior seating area on the foredeck
	Nicely hidden workshop and storage on the foredeck
SUN DECK	Sunbathing set-up aft
	Jacuzzi 1200L with heating and hydromassage
	Bar
	Dining table for up to 8
	Control station
CAPTAIN & CREW	1 x captain's cabin with en-suite bathroom
	4 x 2-Bunk crew cabins on lower deck, forward

6. MECHANICAL EQUIPMENT

ENGINES	2 x MTU 16V4000M90, 2,720 KW at 2,100 RPM
ENGINE HOURS	3,122 (Port) & 3,128 (Starboard) – 05/06/2021
GEARBOXES	ZF, model BW 7550 P (PTO axial, vertically off-set)
DRIVE	Direct
PROPELLERS	2 x Schaffran five 1,380 mm blades
GENERATORS	2 x 100 kW John Deere 50 Hz
GENERATORS HOURS	9,884 (Port) & 7,218 (Starboard) - 05/06/2021
ELECTRICITY	Three phase, 230/400 Volts, 3 wire, 1,500 rpm
SHORE POWER	400 Volts, 3 phase 1 x for TV/Radio 1 x for Telephone 1 x for Fresh water
BATTERIES	5 in total, various types, GMDSS, emergency etc.
CHARGES	8 in total, make Mass, different types 1 Main unit for transom door & gangway, side folding ladder 1 x Unit for fore-

HYDRAULICS	crane operation1 x Unit for steering system
AIR	Heinen & Hopman2 x Chiller Units2 x Sea-water pumpsTemperature
CONDITIONING	controlled by thermostats fitted in each room
VENTILATION	2 ventilation ribs on both sides of the engine room2 x ventilators/extractors on the starboard
WATER MAKER	2 X HEM type HEM 25/1400, new membranes in 2018
WATER SYSTEM	2 x Electric hydrophor LowaraUVA treatment installation Silver ionizing system Carbon filterSoftener
HOT WATER	2 x Electric boilers 200L eachCircular system all over the boat
TOILET SYSTEM	Jet vacuum system
SEWAGE TREATMENT	Hamann A6
FUEL SEPARATOR	Westfalia type OSD 2-02-137
STABILISER	VT Naiad Marine system 820, stabilization at anchor and underway
BOW THRUSTER	HRP 1000 – 80 kW hydraulically driven

7. NAVIGATION EQUIPMENT

RADAR	Furuno Black box x band radar, 12 kW with 6,5 scanner, type FAR-2117BB
COMPASSES GPS	Furuno Satellite Compass/GPS Navigat X MK1 C.Plath GyrocompassMX 420 Navigation System
AUTOPILOT	Navipilot 4000
DGPS RECEIVER	AP NAVIGATOR MK12
AIS	Furuno Universal AIS FA - 150
NAVTEX	Furuno Navtex NX-700
DEPTH SOUNDER	Furuno dual frequency color video, type FCV-1100L
WIND/SPEED LOG	3 x B&G Hydra-2000
ELECTRONIC CHART	Transas NS-3000
MONITORING	Main monitoring system in wheelhouse3 x Fixed cameras, 1 x each side & 1 x aft1 x Motorized camera in engine room1 x Night vision camera mounted on Mast NUTi
BNWAS	Watchkeeper

WEATHER STATION	4 x Furuno RD-30 repeater crew mess/captain cabin/engineer cabin/garage
SHIPS COMPUTER NETWORK	Heinen & Hopman
FOG HORN	Kahlenberg model T1
SEARCH LIGHTS	2 x ARC Electronics RCL-600
WINDSCREEN WIPERS	5 x marine type windscreen wipers Hollex 235 KS

8. COMMUNICATION EQUIPMENT

SATCOM	SeaTel
INMARSAT-C	Sailor TT-3606E
VHF	2 x handheld VHF radio Jotron TR20 1 x Sailor simplex/semi-duplex RT-50221 x Sailor duplex VHF station RT-47222 x Icom simplex/semi-duplex VHF station for both wing stations IC-M591 x Icom IC-M421 simplex/duplex VHF crew mess
LOUDHAILER	Raytheon RAY-430
INTERNET	VSAT Seatel 1 x D-link DWR-921 modem 4G Mobile Internet 10 x internet signal booster throughout the boat
AV SYSTEM	Plex Media Server with Philips Pronto control panels
TELEPHONE SYSTEM	20 x portable phones Gigaset

9. DECK EQUIPMENT

ANCHOR CAPSTAN	2 x electric stainless steel Staalart CAS23-17,5.ED
ANCHOR CHAINS	2 x 150 m chains Ø 17,5 mm Control box for 230V/200VAC 50 Hz 3ph-24VDC for anchor winch dual direction dual speed 2 x stainless steel chain stoppers mounted on baseplate of the anchor winch 2 x tensionless square

	chain roller	2 x stainless steel devil claws
BOLLARDS		8 x stainless steel bollards on the main deck, 2 x on the swim platform
SIDE BOARDING LADDER		1 x electric/hydraulic operated, stainless steel+wood
SWIM LADDER		1 x Stainless steel swim ladder
GANGWAY		Hydromar, 5,95 meters length, hydraulic
CRANE/WINCHES		1 x hydraulic foredeck crane Hydromar 2 x winches for tender in the garage
ELEVATOR		1 x Lodige Dumbwaiter from maindeck to upper deck

10. ENTERTAINMENT EQUIPMENT

Entertainment system video:

- 5 x Apple TV in each cabin
- Plex Media Server with Philips Pronto control panels in each cabin and salon
- Satellite TV & Internet

Entertainment system audio:

- Internal Bluetooth network
- Plex audio server
- Ipod airplay
- Google Chromecast audio

Guest Double Cabins:

- 2 x Samsung 27" LED 7 series
- 1 x Philips Pronto control panel
- 10 x built in speakers (5 in each cabin)
- 2 x Apple TV

Guest Twin Cabins:

- 2 x Samsung 32" LED Full HD
- 1 x Philips Pronto control panel
- 10 x built in speakers (5 in each cabin)

- 2 x Apple TV

Main Salon

- 1 x Samsung 55" LED Full HD
- 1 x Linn Classik Movie System
- 1 x Apple TV
- 1 x Philips Pronto TSU9800 docking station
- 1 x Philips Pronto control panel
- 7 x inbuilt ceiling speakers

Master Cabin:

- 1 x Samsung 55" LED Full HD
- 1 x Philips Pronto control panel
- 9 x inbuilt ceiling speakers

Skylounge:

- 1 x Samsung 32" LED Full HD
- 1 x Philips Pronto control panel
- 2 x inbuilt ceiling speakers
-

Sundeck:

- 4 x JL audio external speakers
- 2 x JL audio subwoofer

Crew mess and crew cabins:

- 1 x Sony 32 "
- 6 x inbuilt ceiling speakers

Captain's cabin:

- 1 x Scepter 22"LCD
- 1 x inbuilt ceiling speakers

Deck:

- 12 x inbuilt ceiling speakers JL audio (4 main deck, 2 fore deck, 2 upper deck, 2 sun deck)

11. GALLEY & LAUNDRY EQUIPMENT

Galley & pantry equipment:

- 1 x Gaggenau oven/grill
- 1 x GIGA ceramic cooktop
- 1 x GIGA professional oven
- 1 x GIGA Tapenyaki Griddle
- 1 x Miele dishwasher
- 2 x Foster Gastro refrigerator 600 litres (compressor in engine room)
- 1 x Foster Gastro freezer 600 litres (compressor in engine room)
- 1 x Liebherr Comfort refrigerator 80 litres
- 1 x Eurocave wine cooler for 175 bottles
- 1 x Hoshizaki Ice Maker

Laundry:

- 2 x Miele washer professional
- 2 x Miele drier professional

Public areas:

- 2 x Frigonautica fridge in Master cabin and lowerdeck desk corridor
- 1 x GAMKO professional bar fridge 150 ltrs in Skylounge
- 1 x Hoshizaki icemaker in Skylounge bar

Exterior decks:

- 2 x Frigonautica fridge on the sundeck
- 1 x Hoshizaki icemaker on the sundeck

12. TENDERS & WATERTOYS

TENDER

- 1 x Novurania 650, 190 HP, inboard Volvo Penta D220 (in the garage)
- 1 x Novurania 360TR, outboard Yamaha Four Stroke 20HP (on the foredeck)

WATER SPORTS

- 2 x Yamaha Waive Runner VX1100 Jetski 100 HP

13. SAFETY EQUIPMENT

FIRE FIGHTING

- Fire detector Minerva Marine T2000 with control station in the wheelhouse
- 3 x CO2 system in the engine room and galley
- 25 x portable powder fire-extinguishers
- 5 x foam fire-extinguishers

SAFETY

- 4 x Zodiac liferafts 12 pax each
- 4 x lifebuoys
- 28 x SOLAS inflatable lifejackets
- 25 x SOLAS immersion suits
- Safety Plan approved by MCA
- 1 x 406 EPIRB
- 2 x TRON 9Ghz SART
- 1 x rescue boat Novurania 360TR

REFIT SUMMARY

Extensive refit was done in 2017 and 2018, which included the following major works such as:

HULL and DECK:

- Fully new paint hull in cream color
- Fully new paint superstructure in white color
- Teak deck renew (100%), sanding
- Change deck lights to 120 dots LEDs
- Antifouling Trilux 33 mic International – 4 layers at the ship's bottom

TECH

- PLEX media server installation
- New Gigaset phones
- All new TVs (Samsung LED Full HD)
- New audio and subwoofers installed on the sun deck

MACHINERY

- Water pumps replacement
- New water purifying system: silver water ionizer, carbon filter, watersoftener
- MTU service every 250 hours
- Generators service
- 12 x bilge drying system valves change
- New emergency bilge pump
- Watermakers serviced
- New compressors for Lowara freezer
- New fresh water pumps
- New seachest baskets
-

EXTERIOR

- New sound system installation (JL audio sound and bas)
- New awning added to the sundeck (extending up to 2.7 meters)
- Exterior furniture re-upholstered with Sunbrella fabric
- New teak exterior armchairs with Sunbrella cushions
- New marble tables at the bar on the sun deck
- New LED lights

INTERIOR

- All new carpets made by silk, wool & bamboo fibers (by Oliver Treutlein, Germany)
- New Italian custom-made furniture by Ludovica Masceroni (sofas in salon and master bedroom, armchairs in salon and skylounge, chairs in the dining area)

- New lamps by Ludovica Masceroni
- New custom-made wall panels in salon, master bedroom and guest cabins
- Chemical cleaning of curtains and mattresses every year
- Marble polishing in all bathrooms
- New furniture at WC and showers

Исключения

При продаже яхты исключаются личные вещи владельца.

Отказ от ответственности

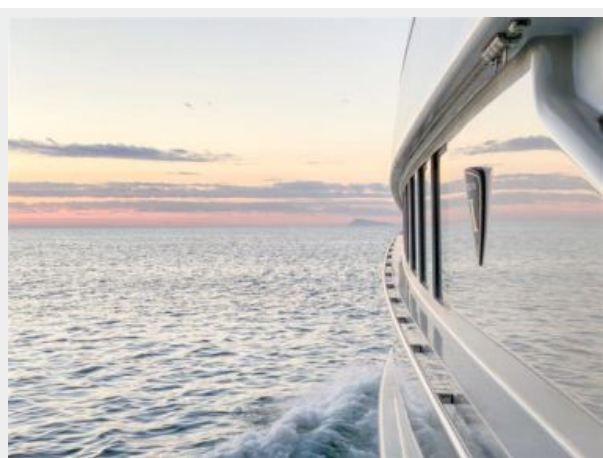
Компания предоставляет описание судна или яхты добросовестно, но не может гарантировать точность этой информации, а также не ручается за техническое состояние. Покупатель должен проинструктировать своих агентов или оценщиков исследовать представленную информацию более подробно, по собственному желанию. Продажа судна или яхты, изменение цены или снятие с продажи будет происходить без предварительного уведомления.

ФОТОГРАФИИ

Palma Boat Show 2021

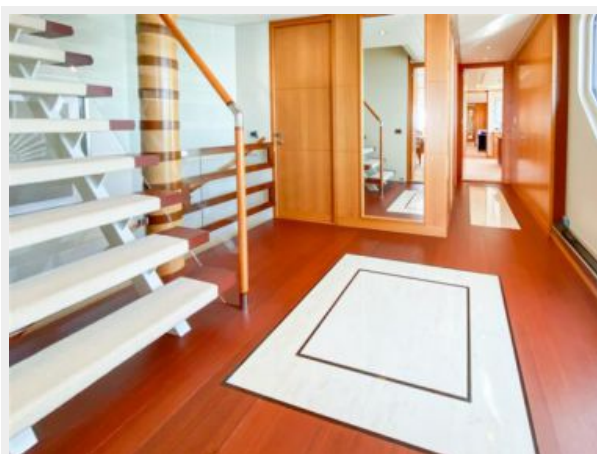




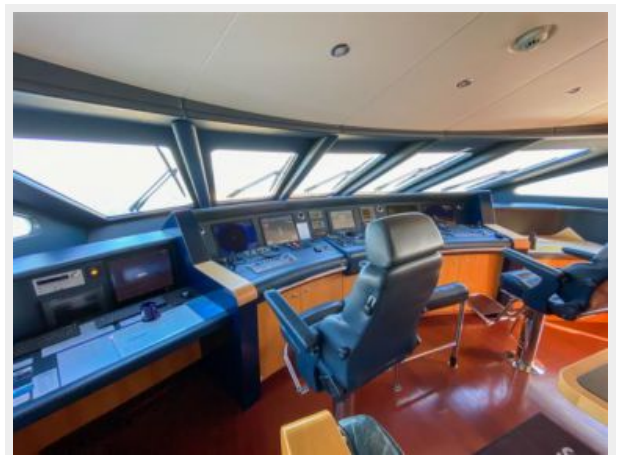
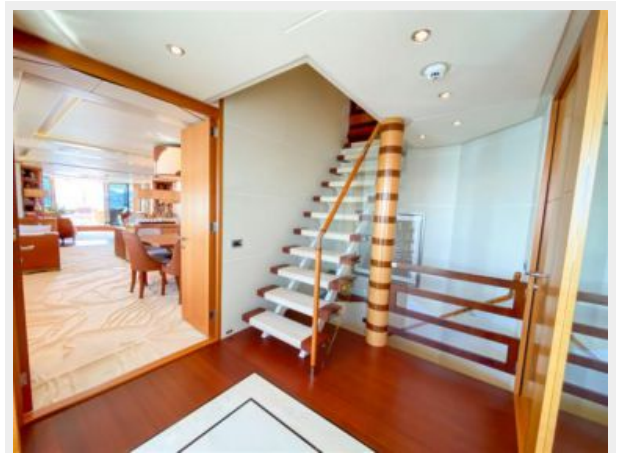












КОНТАКТЫ

Андрей Шестаков (Andrey Shestakov) – ведущий яхтенный брокер отдела продаж яхт и судов компании Shestakov Yacht Sales Inc. Официальный представитель Shestakov Yacht Sales Inc. для русскоговорящих клиентов в центральном офисе компании в Майами/Форт Лодердейл/Флорида/США.

Контактная информация

Email: andrey@shestakovyachtsales.com

Web: shestakovyachtsales.com

Телефоны

Краснодарский край: **+7(918)465-66-44**

США, Майами, Флорида: **+1(954)274-4435**

Время работы

Понедельник – Суббота: **9:00 - 21:00**
EDT

Воскресенье: **Закрито**

Адрес



Harbour Towne Marina, 850 NE 3rd St,
STE 213, Dania, FL 33004