

## E56XO (NEW BOAT SPEC) — HORIZON



**Builder:** HORIZON

**Year Built:** 2022

**Model:** Cruising Yacht

**Price:** PRICE ON APPLICATION

**Location:** United States

**LOA:** 56' 0" (17.07m)

**Beam:** 15' 9" (4.80m)

**Max Draft:** 4' 5" (1.35m)

Our experienced yacht broker, Andrey Shestakov, will help you choose and buy a yacht that best suits your needs E56XO (New Boat Spec) — HORIZON from our catalogue. Presently, at Shestakov Yacht Sales Inc., we have a wide variety of yachts available on our sale's list. We also work in close contact with all the big yacht manufacturers from all over the world.

If you would like to buy a yacht E56XO (New Boat Spec) — HORIZON or would like help answering any questions concerning purchasing, selling or chartering a yacht, please call +1(954)274-4435

# TABLE OF CONTENTS

TABLE OF CONTENTS	2
SPECIFICATIONS	4
Overview	4
Basic Information	4
Dimensions	4
Speed, Capacities and Weight	4
Accommodations	5
Hull and Deck Information	5
Engine Information	5
DETAILED INFORMATION	6
E56XO Overview	6
Exclusions	6
Disclaimer	6
PHOTOS	8
Exterior II	8
Exterior III	8
Exterior IV	8
Exterior V	8
Main Deck View	8
Main Deck View II	8
Galley	9
Aft View	9
Lower Helm	9
Main Salon	9
Lower Deck	9
Master Stateroom	9
Master Stateroom II	10
Master Stateroom III	10

---

Master Head	10
VIP Stateroom	10
Guest head	11
Twin Guest Stateroom	11
Aft Deck	11
Aft Deck II	11
Aft Deck III	12
Bow Deck	12
General Layout	12
Bow Deck II	12
CONTACTS	13
Contact details	13
Telephones	13
Office hours	13
Address	13

# SPECIFICATIONS

## Overview

**\*Please note that this listing represents a model specification for a new build and not an actual hull for sale or vessel location. For more information on this model and build availability, please contact us\*\***

Our first sport yacht model, the Horizon E56XO combines sleek exterior styling and numerous outdoor amenities with luxurious interior accommodations. She is based on the popular E56 motoryacht model but offers new alfresco entertaining areas, including a custom-designed aft deck transom cabinet that transforms into a serving area and forward deck dinette and sunpads.

The E56XO and her spacious 15'9" beam provides a fully-equipped galley, flexible salon area, and lower helm on the main deck, along with three comfortable guest staterooms – a full-beam Master, VIP cabin in the bow, and twin guest cabin to starboard – below deck. Powered by Volvo IPS 950 engines, she will attain a top speed of 32 knots for the ultimate sport yacht experience.

## Basic Information

**Category:** Cruising Yacht

**Sub Category:** Sport Cruiser

**Model Year:** 2022

**Year Built:** 2022

**Country:** United States

**Vessel Top:** Hardtop

## Dimensions

**LOA:** 56' 0" (17.07m)

**LWL:** 44' 10" (13.67m)

**Beam:** 15' 9" (4.80m)

**Max Draft:** 4' 5" (1.35m)

## Speed, Capacities and Weight

**Displacement:** 52469 Pounds

**Water Capacity:** 160 Gallons

**Fuel Capacity:** 660 Gallons

---

## Accommodations

---

**Total Cabins:** 3

**Total Berths:** 4

**Sleeps:** 6

**Total Heads:** 2

---

## Hull and Deck Information

---

**Hull Material:** Fiberglass

**Hull Configuration:** Semi-Displacement

---

## Engine Information

---

**Engines:** 2

**Manufacturer:** Volvo Penta

**Model:** IPS 950

**Engine Type:** Inboard

**Fuel Type:** Diesel

---

# DETAILED INFORMATION

---

## E56XO Overview

---

The new Horizon E56XO features sleek exterior styling, with reduced gunnel heights for a lower profile and large window lines, and her newly-designed outdoor areas focuses on the ultimate alfresco experience. A custom-designed aft deck transom cabinet transforms into a serving area, incorporating a BBQ, sink, storage, and baitwell -- a perfect spot to entertain or relax in while guests partake in water sports off of the hydraulic swim platform. For sunny days at anchor, the E56XO's forward deck offers a dinette seating and sunpads, a popular design on Horizon's larger motoryachts now included in this model.

As the first Horizon E56XO is built for Australia, the main deck opens to a fully-equipped aft-galley and breakfast bar; extensive storage is located on the starboard side and includes a hydraulic Hi/Lo 50" TV that is ideally located for viewing either in the galley or the forward salon. With a Hi/Lo table and U-shaped seating, the salon can be easily transformed into a dining area that accommodates six guests. The forward lower helm features twin helm chairs, complete Raymarine navigational equipment, and everything needed to safely and easily pilot the E56XO sport yacht.

Below deck, the full-beam Master stateroom is laid out to maximize space, with the head forward of the Queen bed, a chaise to starboard for taking in the view, and a large expanse of storage cabinets plus a closet to port. The VIP stateroom is found forward in the bow and replicated from the E56 model, but the starboard twin stateroom includes two twin beds; a sizable shared head is located to starboard.

Powered by twin CAT C12A 715HP engines, the new Horizon E56XO is estimated to reach a top speed of 26 knots; with the optional Volvo IPS 950 engines, she will attain a top speed of 32 knots! Additionally, the hull has been designed to accommodate Seakeeper gyro stabilizers if desired, and the Yacht Controller wireless remote docking system included in hull one ensures stress-free maneuvering and docking.

---

## Exclusions

---

Owner's personal belongings.

---

## Disclaimer

---

The Company offers the details of this vessel or yacht in good faith but cannot guarantee or warrant the accuracy of this information nor warrant the condition of the vessel. A buyer should instruct his representatives, agents, or his surveyors, to investigate such details as the buyer desires validated. This vessel or yacht is offered subject to prior sale, price change, or withdrawal

without notice.

# PHOTOS

**Exterior II**



**Exterior III**



**Exterior IV**



**Exterior V**



**Main Deck View**



**Main Deck View II**





**Galley**



**Aft View**



**Lower Helm**



**Main Salon**



**Lower Deck**



**Master Stateroom**



**Master Stateroom II**



**Master Stateroom III**



**Master Head**



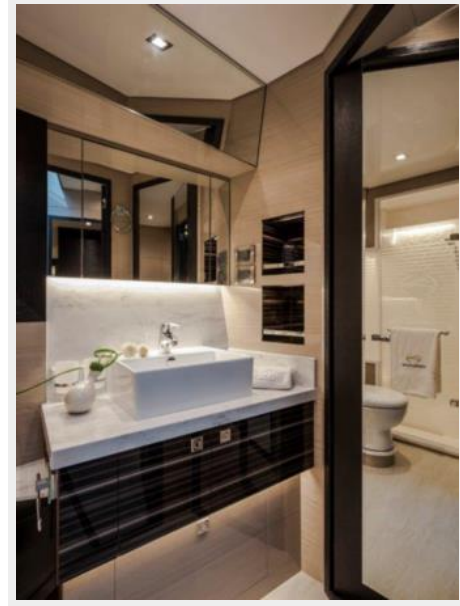
**VIP Stateroom**



**Twin Guest Stateroom**



**Guest head**



**Aft Deck**



**Aft Deck II**



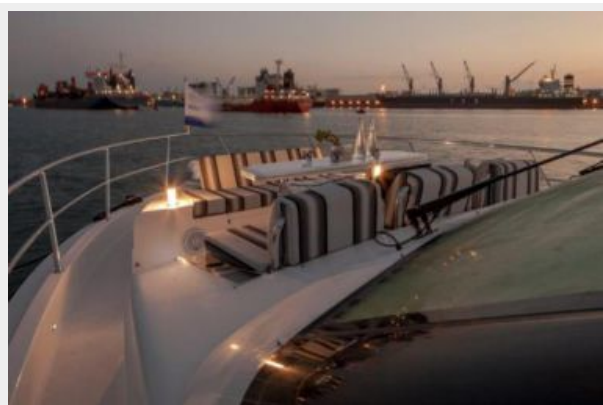
**Aft Deck III**



**Bow Deck**



**Bow Deck II**



**General Layout**



# CONTACTS

---

Andrey Shestakov, leading yacht broker of the sales department of Shestakov Yacht Sales Inc. Shestakov Yacht Sales Inc., the official representative of the Miami/Fort Lauderdale FL headquarters.

## Contact details

---

Email: [andrey@shestakovyachtsales.com](mailto:andrey@shestakovyachtsales.com)

Web: [shestakovyachtsales.com/en/](http://shestakovyachtsales.com/en/)

## Telephones

---

USA: +1(954)274-4435

## Office hours

---

Monday – Saturday: **9:00 - 21:00** EDT

Sunday: **closed**

## Address

---



Harbour Towne Marina, 850 NE 3rd St,  
STE 213, Dania, FL 33004