

## AGAPE — BRISTOL YACHTS



**Судостроитель:** BRISTOL YACHTS

**Год постройки:** 1979

**Модель:** Sloop

**Цена:** ЦЕНА ЯХТЫ ПО ЗАПРОСУ

**Местонахождение:** United States

**Длина общая:** 40' 0" (12.19m)

**Ширина:** 10' 9" (3.28m)

**Макс. осадка:** 5' 5" (1.65m)

Купить **Agape — BRISTOL YACHTS** а также выбрать подходящую вам яхту из нашего каталога яхт вам поможет опытный яхтенный брокер Андрей Шестаков. На сегодняшний день компания **Shestakov Yacht Sales Inc.** имеет большое количество яхт в собственном списке продаж, а также тесно сотрудничает со всеми крупными яхтенными производителями по всему миру.

Для того чтобы купить яхту **Agape — BRISTOL YACHTS** а также проконсультироваться по любому вопросу связанному с покупкой, продажей, чартером яхт позвоните по телефону **+7(918)465-66-44**.

# ОГЛАВЛЕНИЕ

ОГЛАВЛЕНИЕ	2
ХАРАКТЕРИСТИКИ	7
Обзор	7
Основная информация	7
Размеры	7
Скорость, вместимость и масса	7
Размещение	8
Корпус и палуба	8
Информация о двигателе	8
ПОДРОБНОЕ ОПИСАНИЕ	9
MAIN DESCRIPTION	9
BRISTOL 40 - AGAPE - MEDIA	9
BRISTOL 40 - AGAPE - WALKTHROUGH	9
BRISTOL 40 AGAPE - ACCOMODATIONS	11
BRISTOL 40 AGAPE - MAIN CABIN	13
BRISTOL 40 AGAPE - NAV STATION	14
BRISTOL 40 AGAPE - GALLEY	14
BRISTOL 40 AGAPE - HEAD	14
BRISTOL 40 - AGAPE - COCKPIT	15
BRISTOL 40 - AGAPE - HELM	16
BRISTOL 40 - AGAPE - ELECTRONICS	16
BRISTOL 40 - AGAPE - DECK	17
BRISTOL 40 - AGAPE - RIG	18
BRISTOL 40 - AGAPE - SAILS & CANVAS	19
BRISTOL 40 - AGAPE - MECHANICAL	19
BRISTOL 40 - AGAPE - ELECTRICAL	20
BRISTOL 40 - AGAPE - SAFETY	20
BRISTOL 40 - AGAPE - TENDER	21

DISCLAIMER	21
Исключения	22
Отказ от ответственности	22
ФОТОГРАФИИ	23
Bristol 40 - Agape - 1b	23
Bristol 40 - Agape - 1a	23
Bristol 40 - Agape - 1c	23
Bristol 40 - Agape - 3	23
Bristol 40 - Agape - 4	23
Bristol 40 - Agape - 5	23
Bristol 40 - Agape - 6	24
Bristol 40 - Agape - 7	24
Bristol 40 - Agape - 8	24
Bristol 40 - Agape - 9	24
Bristol 40 - Agape - 10	24
Bristol 40 - Agape - 11	24
Bristol 40 - Agape - 12	25
Bristol 40 - Agape - 13	25
Bristol 40 - Agape - 14	25
Bristol 40 - Agape - 15	25
Bristol 40 - Agape - 16	25
Bristol 40 - Agape - 17	25
Bristol 40 - Agape - 18	26
Bristol 40 - Agape - 19	26
Bristol 40 - Agape - 20	26
Bristol 40 - Agape - 21	26
Bristol 40 - Agape - 22	26
Bristol 40 - Agape - 23	26
Bristol 40 - Agape - 25	27

---

Bristol 40 - Agape - 24	27
Bristol 40 - Agape - 26	27
Bristol 40 - Agape - 27	27
Bristol 40 - Agape - 28	27
Bristol 40 - Agape - 29	27
Bristol 40 - Agape - 30	28
Bristol 40 - Agape - 31	28
Bristol 40 - Agape - 32	28
Bristol 40 - Agape - 33	28
Bristol 40 - Agape - 34	28
Bristol 40 - Agape - 35	28
Bristol 40 - Agape - 36	29
Bristol 40 - Agape - 37	29
Bristol 40 - Agape - 38	29
Bristol 40 - Agape - 39	29
Bristol 40 - Agape - 40	29
Bristol 40 - Agape - 41	29
Bristol 40 - Agape - 42	30
Bristol 40 - Agape - 43	30
Bristol 40 - Agape - 44	30
Bristol 40 - Agape - 45	30
Bristol 40 - Agape - 47	30
Bristol 40 - Agape - 46	30
Bristol 40 - Agape - 48	31
Bristol 40 - Agape - 49	31
Bristol 40 - Agape - 50	31
Bristol 40 - Agape - 51	31
Bristol 40 - Agape - 52	31
Bristol 40 - Agape - 53	31

---

Bristol 40 - Agape - 54	32
Bristol 40 - Agape - 55	32
Bristol 40 - Agape - 56	32
Bristol 40 - Agape - 57	32
Bristol 40 - Agape - 58	32
Bristol 40 - Agape - 59	32
Bristol 40 - Agape - 61	33
Bristol 40 - Agape - 60	33
Bristol 40 - Agape - 62	33
Bristol 40 - Agape - 63	33
Bristol 40 - Agape - 64	34
Bristol 40 - Agape - 65	34
Bristol 40 - Agape - 66	34
Bristol 40 - Agape - 67	34
Bristol 40 - Agape - 68	34
Bristol 40 - Agape - 69	34
Bristol 40 - Agape - 70	35
Bristol 40 - Agape - 71	35
Bristol 40 - Agape - 72	35
Bristol 40 - Agape - 73	35
Bristol 40 - Agape - 74	35
Bristol 40 - Agape - 75	35
Bristol 40 - Agape - 76	36
Bristol 40 - Agape - 77	36
Bristol 40 - Agape - 79	36
Bristol 40 - Agape - 78	36
<b>КОНТАКТЫ</b>	<b>37</b>
Контактная информация	37
Телефоны	37

---

Время работы	37
Адрес	37

# ХАРАКТЕРИСТИКИ

## Обзор

The Bristol 40 is a high quality, solidly built boat that has withstood the test of time. Designed by Ted Hood and built by Bristol Yachts in Bristol Rhode Island, Cruising World magazine ranked the B40 in its 40 all-time best monohulls saying: "With her prominent overhangs, sweet sheer line, low freeboard, undistorted hull shape and narrow beam, this iconic 40-footer set high marks for seaworthiness and style,"

Agape is a beautiful example of this classic yacht. The current owners sailed the Chesapeake aboard her for many years, while raising their family. However, if your sights are set across the ocean, the B40 is capable of taking you anywhere in the world. Designed with blue water cruising in mind, the B40 is a stable and well-mannered boat that has completed many ocean crossings. You can even read about one owner's 13,000 mile Polynesian adventure here

Seeing is believing, don't miss the virtual tour, video tour and slideshow links below, and call for a showing today!

## Основная информация

**Тип судна:** Sloop

**Модельный год:** 1979

**Год постройки:** 1979

**Страна:** United States

## Размеры

**Длина общая:** 40' 0" (12.19m)

**Ширина:** 10' 9" (3.28m)

**Макс. осадка:** 5' 5" (1.65m)

## Скорость, вместимость и масса

**Водоизмещение:** 17580 Pounds

**Вместимость воды:** 130 Gallons

**Объем топливного бака:** 30 Gallons

## Размещение

---

Всего кают: 1

Всего коек: 2

Всего ком. состава: 1

## Корпус и палуба

---

Материал корпуса: Fiberglass

## Информация о двигателе

---

Двигатели: 1

Производитель: westerbeke

Модель: 40

Тип двигателя: Inboard

Тип топлива: Diesel



---

# ПОДРОБНОЕ ОПИСАНИЕ

---

## MAIN DESCRIPTION

---

The Bristol 40 is a high quality, solidly built boat that has withstood the test of time. Designed by Ted Hood and built by Bristol Yachts in Bristol Rhode Island, Cruising World magazine ranked the B40 in its 40 all-time best monohulls saying: "With her prominent overhangs, sweet sheer line, low freeboard, undistorted hull shape and narrow beam, this iconic 40-footer set high marks for seaworthiness and style,"

Agape is a beautiful example of this classic yacht. The current owners sailed the Chesapeake aboard her for many years, while raising their family. However, if your sights are set across the ocean, the B40 is capable of taking you anywhere in the world. Designed with blue water cruising in mind, the B40 is a stable and well-mannered boat that has completed many ocean crossings. You can even read about one owner's 13,000 mile Polynesian adventure here

Seeing is believing, don't miss the virtual tour, video tour and slideshow links below, and call for a showing today!

## BRISTOL 40 - AGAPE - MEDIA

---

Walkthrough Video:

Virtual Tour:

Slide Show:

Bob Pingle Review:

Manufacturer's Brochure:

## BRISTOL 40 - AGAPE - WALKTHROUGH

---

### COCKPIT:

The cockpit is spacious and provides plenty of room to sail the boat with a full crew, as well as a great space to entertain at anchor or dockside. It features a pedestal helm with a stainless, suede wrapped wheel, binnacle compass, throttle and gear shift, wheel lock, depth and speed instruments, and a stainless steel hand hold. The teak lined coamings feature two cubbies on either side. The engine control panel is found on the starboard forward bulkhead along with a wind instrument. The engine start/stop controls are located on starboard well bulkhead at the helm, along with the 30 amp electrical hookup. A VHF repeater plug is found opposite on the port side.

Seating for 7 is provided by port and starboard benches and a stern bench, which features a raised helmsman's seat, that doubles as a locker cover. Two additional lockers are found under the port and starboard benches.

Four Lewmar winches are mounted forward on the coaming two port and two starboard for head sail trim. The mainsheet is mounted to an arch just forward of the helm, along with a single speed winch.

The cockpit is protected from the elements by a connected dodger and Bimini

#### TOPSIDES:

Moving forward the deck surrounded by a teak toe rail and is protected by stainless steel bow and stern railings connected by dual lifelines running the length of the deck port and starboard. Gates are found just forward of the Cockpit, port and starboard.

Teak hand holds run along the cabin top, port and starboard, along with two, center mounted opening hatches, one mid-way the other forward. Two dorade boxes are found port and starboard of the mast.

The bow features an roller mounted anchor with a pass through to the chain locker below. Cleats are found port and starboard at the bow and stern.

The single spreader, keel stepped rig is supported by wire standing rigging and a roller furler. Two halyard winches are mounted on the mast. Jib tracks run along toe rails on the port and starboard sides. Decks with four scuppers, two port, two starboard are found just forward of the cockpit.

#### MAIN CABIN:

With teak joinery and appointments, deep blue cushions and a teak & holly sole, the spacious main cabin is a warm and inviting space. Entering the cabin from the cockpit companionway, the galley is found to starboard and the nav station, with a quarter berth behind, to port. A U shaped settee with seating for five is found forward of the nav station. On the starboard side forward of the galley a settee with seating for three extends the length of the salon. Storage lockers are found behind the settees, with additional storage below. A deck mounted folding dining table is center mounted between the settees, and features two leaves and a bottle well. Shelves and a storage locker are found above both settees. Stereo speakers are mounted on the forward bullhead, port and starboard. Teak hand holds are overhead mounted above both settees. There are two overhead lights and two reading lamps mounted on the forward bulkheads, port and starboard. Ventilation is provided by an overhead opening hatch, three opening ports, a dorade vent and the companionway. Four fixed port/windows are found in the aft section of the cabin two port, two starboard.

#### NAV STATION:

Found in the aft port side of the main cabin the forward facing nav station features a teak, lift top

nav table, VHF radio, AM/FM radio Cassette player, and lamp. Four drawers are built into the table base and there is a locker above the table on the starboard side. Seating is provided by the end of the quarter berth.

#### GALLEY:

The galley is found in the aft starboard side of the main cabin and features a counter top with a stainless steel sink mounted forward and a top loading ice box aft, separated by a gimballed 4 burner stove/oven under a slide away countertop. Lockers are found above the counter, with an additional lockers found under and behind the sink. The electrical panels are mounted on the aft bulkhead above the icebox, with the battery bank switch and a 120 vac outlet mounted below. Headroom 74 inches.

#### FORWARD CABIN:

The private forward cabin features teak joinery and appointments and a teak & holly sole. Access to the cabin is found through a companionway formed by a hanging locker with shelf top on the starboard side and a door to the head on the port. There is a second hanging locker and two additional lockers with a shelf atop just inside the door to starboard. Another locker is found on the port side. The v-berth is forward, with drawers and lockers underneath. Additional storage is provided by lockers running the length of the berth port and starboard. A storage rack for the berth cut out is overhead mounted above the berth. There is an additional head door located opposite the birth. There are two opening ports and an overhead hatch. Two lamps are mounted port and starboard at the head of the berth. Headroom: 74 inches.

#### HEAD:

The head is found on the port side between the salon and forward cabin. There are two doors, one in the companionway, the second in the cabin. The head features a manual marine toilet and a countertop housing a stainless steel sink with hot & cold running water and shower wand. A mirror, soap dish, 120 vac outlet and locker are found above the sink counter, with drawers and a locker underneath. Two additional lockers are found above the head. A full length mirror is mounted on the aft bulkhead along with a towel rack, shower wand mount and lamp. A second lamp is mounted on the forward bulkhead. A 360 degree shower curtain is rail mounted overhead. Ventilation is provided by an opening port and a dorade vent. Headroom 74 inches.

#### ENGINE COMPARTMENT:

The engine compartment is found under the salon companionway stairs.

---

## BRISTOL 40 AGAPE - ACCOMODATIONS

---

Agape can sleep six people. The port salon settee makes into a double berth, with the starboard serving as a single. The v-berth sleeps 2. The quarter berth sleeps 1

---

**FORWARD CABIN:**

The forward cabin is located in front of the salon and features:

- Teak joinery and appointments
- Teak & Holly sole
- V-berth, w/custom mattress pad (2018), sleeps 2
- Front access storage locker, under berth
- 6 drawers, under berth
- Cabinet with three lockers and top shelf
- Cabinet with single locker and top shelf
- Lockers running the length of the v-berth on the port & starboard sides
- 2 cabinet mounted LED lamps
- Opening overhead hatch w/screen
- 2 opening ports with screens
- Chain locker access
- Door to head
- V-berth insert
- Black water tank beneath the berth
- Headroom: 74 inches

**SALON SETTEES:**

- Port settee converts to a double berth
- Starboard settee convert to a single berth

**QUARTER BERTH:**

Located behind the nav station on the port side:

- Single berth
- Lockers running the length of the berth on the port side

---

## BRISTOL 40 AGAPE - MAIN CABIN

---

The main cabin is entered from the cockpit, four steps down via a center companionway and features:

- Teak joinery and appointments throughout
- Teak & Holly sole
- Port settee; seats 5; converts to a double berth
- Starboard settee; seats 3; converts to a single berth
- Deck mounted teak dining table with two folding leaves and bottle well
- Shelving and storage lockers run length of salon, port & starboard sides
- 2 drawers and 3 lockers under port settee
- 3 front access lockers under starboard settee
- 3 front access lockers behind the each settee
- Overhead hand holds over settees, port and starboard
- 4 Fixed port/windows; 2 port, 2 starboard
- 3 opening ports with screens; 1 port, 2 starboard
- Dorade vent
- Overhead opening hatch w/screen, center mounted
- Companionway hatch w/hatch boards
- 2 Overhead lights; 12 vdc
- 2 lamps, forward bulkhead mounted; 12 vdc
- 2 Cybernet stereo speakers, forward bulkhead mounted, port and starboard
- Seth Thomas ships clock
- Seth Thomas barometer
- 2 ships bells
- Reference books
- Headroom 76 inches

---

## BRISTOL 40 AGAPE - NAV STATION

---

The Navigation Station is located in the aft port side of the main cabin and features:

- Standard navigation table with lift top with storage underneath; front facing
- 4 Drawers underneath table
- Storage locker above table
- Horizon Intrepid VHS radio; locker mounted, with RAM mic cockpit remote
- Cybernet Marine Stereo FM/AM radio cassette player, mounted; model CMS 3000
- Map light

---

## BRISTOL 40 AGAPE - GALLEY

---

The galley is located in the aft starboard side of the main cabin and features:

- Top access ice box
- 4 Burner Gas Systems Regal 2 CNG gimbaled stove/oven with counter top cover
- Stainless steel sink hot/cold pressurized water and manual pump spigot
- Under sink locker
- Under counter locker; top loading
- Over counter lockers
- Over counter light; 12 vdc (inoperable)
- 120 vac outlet
- Battery switch
- Electrical control panel
- Assorted dishes, cookware, flatware and cleaning supplies

---

## BRISTOL 40 AGAPE - HEAD

---

The head, which doubles as a shower, is located forward of the main cabin on the port side and includes:

- Companionway and forward cabin access
- Manual marine head
- Toilet paper holder
- Counter with stainless steel sink with hot and cold running water
- Shower wand
- Shower wand mount
- Soap dish
- Towel rack
- 2 Mirrors
- 2 lamp; 12 vdc
- Storage lockers above counter and head
- Storage locker; under sink
- 4 drawers, under sink
- Shower curtain on 360 degree overhead track
- 120 vac outlet
- Opening port, with screen
- Dorade vent
- Various cleaning supplies
- Headroom: 74 inches

## **BRISTOL 40 - AGAPE - COCKPIT**

---

The cockpit is in the stern of the boat and features a U layout including:

- Bench seating for 7 passengers; 3 port, 3 starboard, 1 aft
- Bench seat cushions
- Edson wheel pedestal helm
- 3 Lockers under the bench seats

- 4 Cubby lockers
- Companionway to salon; center forward

---

## **BRISTOL 40 - AGAPE - HELM**

---

- Edson pedestal helm with:
  - \* stainless destroyer wheel, suede wrapped
  - \* gear shift and throttle
  - \* Signet depth meter; model MK 17
  - \* Signet speed meter
  - \* Ritchie magnetic binnacle compass
  - \* Stainless steel binnacle hand hold
  - \* Wheel lock
- Engine instrument panel; mounted on starboard cabin bulkhead
- Engine start/stop controls, well bulkhead starboard side
- Standard VHS remote unit receptacle, well bulkhead port side
- Signet wind instrument; model MK 254, forward bulkhead mounted, starboard
- Emergency tiller

---

## **BRISTOL 40 - AGAPE - ELECTRONICS**

---

- Garman hand held GPS; model 12 XL
- Signet depth meter; model MK 17
- Signet speed meter
- Signet wind instrument; model MK 254
- Horizon Intrepid VHS radio; with RAM mic cockpit remote; model GX1260S
- Cybernet Marine Stereo FM/AM radio cassette player; model CMS 3000
- 2 Cybernet stereo speakers



---

## BRISTOL 40 - AGAPE - DECK

---

- Chain locker, forward cabin access
- QCR Anchor, 25#
- Rode (approx. 100 feet), with chain lead (approx 20 feet)
- 2 Lewmar 46, two speed, self-tailing winches, cockpit coaming mounted, port and starboard
- 2 Lewmar 40, two speed winch, coaming mounted, port and starboard
- Lewmar 8, single speed winch, main sheet traveler bridge mounted
- Lewmar 16 two speed, mast mounted port
- Lewmar 8 single speed winch, mast mounted starboard
- 4 Winch handles
- Sailing gloves; 2 pair
- 2 Toe rail mounted genoa tracks and cars, port and starboard
- 4 Masthead halyards
- 4 Dorade vents
- 2 Cabin top hatches
- 6 Opening ports
- 4 Fixed port/windows
- Companionway hatch boards
- 4 Teak hand holds, cabin top mounted, port & starboard
- 2 Ships bells stowed
- 4 Deck cleats; 2 at bow, 2 at stern
- 2 CNG tanks, horizontally mounted in starboard cockpit locker
- 3 Cockpit lockers
- 4 Deck scuppers
- 2 Cockpit scuppers

- Stainless steel bow pulpit and stern rail, connected by double life lines with port & starboard gates at cockpit and quick release fittings at bow
- Navigation, running & anchor lights, LED
- Fuel and water fills
- Waste pumpout
- Tasco Marine grill
- Stowable swim ladder
- Dock lines
- Boat hooks
- Fenders
- Washdown equipment
- Swim mask
- Assorted cleaning supplies
- US Ensign

## **BRISTOL 40 - AGAPE - RIG**

---

- Masthead sloop rig
- Spars
- \* Aluminum single spreader mast w/internal halyards
- \* Aluminum boom
- Stainless steel wire standing rigging
- Profurl roller furler
- Lewmar mechanical boom vang
- Headsail sheets
- Main sheet and traveler

---

## BRISTOL 40 - AGAPE - SAILS & CANVAS

---

### Sails:

- Main - Hood
- Genoa (140) - Hood
- Storm Jib - Hood
- 110 Jib - Hood
- Reach Away Sail

### Canvas:

- Main sail cover - blue
- Dodger w/stainless hand holds - blue
- Bimini w/window – blue
- Dodger/Bimini Connector
- Windscoop

---

## BRISTOL 40 - AGAPE - MECHANICAL

---

- Westerbeke diesel engine, model 40, fresh water cooled
- 3 Bladed prop
- Racor 500FG fuel filter/water separator
- Groco Marine Raw water strainer, bronze; model 255-D
- Parmax 4 Automatic Water System Pump; 40 psi; 4.3 gpm; model 31620-0092
- In-line house water strainer
- Rule bilge pump with float switch- Whale Gusher manual bilge pump; model MK II
- Fresh water hand pump galley sink spigot
- Shower sump pump system
- Raritan marine water heater

- Spare Davis Masthead Windex
- Assorted spares and paint & varnish
- Seafit Marine Tool Kit

---

## **BRISTOL 40 - AGAPE - ELECTRICAL**

---

- 12 vdc electrical system with distribution panel
- 120 vac electrical system with distribution panel
- 2 120 vac outlets, GFI protected
- 12 vdc lighting in all cabins
- 3 West Marine deep cycle batteries, MCA 675, RC 120, Ah @ 20HR 65; model 15020183; one uninstalled
- Raritan Crown II Automatic Marine Converter battery charger
- Guest battery master switches
- 30 Amp shore power receptacle; cockpit, starboard aft
- 30 Amp shore power cable
- 2 Shore marine to shore power pigtails
- 120 vac drop line/extension cord
- Guess 6 inch fan; 12 vdc; model 900; not installed
- Vornato 120 vac fan; model EH1-0001 type VR
- Coleman portable lamp; 5357 series
- Eveready portable lamp
- Night Blaster 2,000,000 candlepower rechargeable hand held search light

---

## **BRISTOL 40 - AGAPE - SAFETY**

---

- Night Blaster 2,000,000 candlepower rechargeable hand held search light
- 12 Type II PFDs (2 child size)

- 1 Type III PFD; child
- 2 Type III inflatable PFDs; adult
- 2 Type IV PFD; throwable
- Lifesling overboard rescue system
- Johnson & Johnson First Aid Kit
- 2 Sound Alert hand held air horns
- Signal horn
- Off Shore 36 Waterproof Binoculars 7X50mm; model OS36
- Orion 12 -Gauge HP Arial Flairs – Sept 2021
- Flair gun kit; flairs expired
- Assorted flares; expired
- Signal whistle

## **BRISTOL 40 - AGAPE - TENDER**

---

- Apex 5 person inflatable tender, 10 ft 3 in; model A32R
- Johnson outboard engine; 5 HP, gas; model J5REE
- Oars
- Foot inflation pump
- 2 Gas tanks and hose
- Portable running lights

## **DISCLAIMER**

---

The Company offers the details of this vessel in good faith but cannot guarantee or warrant the accuracy of this information nor warrant the condition of the vessel. A buyer should instruct his agents, or his surveyors, to investigate such details as the buyer desires validated. This vessel is offered subject to prior sale, price change, or withdrawal without notice.

---

## Исключения

---

При продаже яхты исключаются личные вещи владельца.

---

## Отказ от ответственности

---

Компания предоставляет описание судна или яхты добросовестно, но не может гарантировать точность этой информации, а также не ручается за техническое состояние. Покупатель должен проинструктировать своих агентов или оценщиков исследовать представленную информацию более подробно, по собственному желанию. Продажа судна или яхты, изменение цены или снятие с продажи будет происходить без предварительного уведомления.

# ФОТОГРАФИИ

**Bristol 40 - Agape - 1a**



**Bristol 40 - Agape - 1b**



**Bristol 40 - Agape - 1c**



**Bristol 40 - Agape - 3**



**Bristol 40 - Agape - 4**



**Bristol 40 - Agape - 5**



**Bristol 40 - Agape - 6**



**Bristol 40 - Agape - 7**



**Bristol 40 - Agape - 8**



**Bristol 40 - Agape - 9**



**Bristol 40 - Agape - 10**

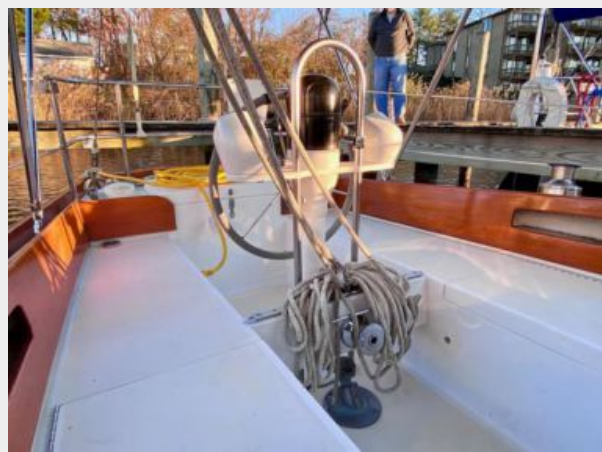


**Bristol 40 - Agape - 11**





**Bristol 40 - Agape - 12**



**Bristol 40 - Agape - 13**



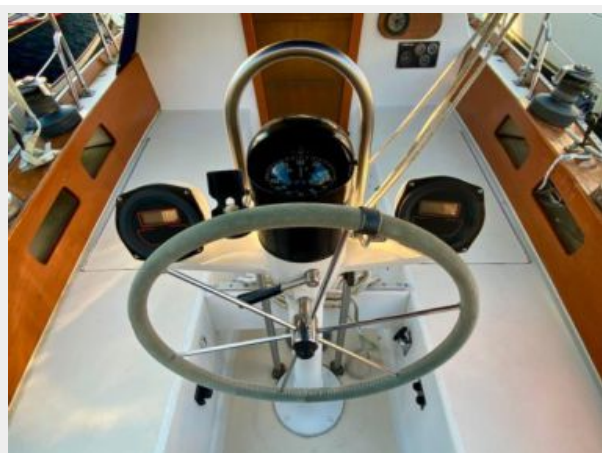
**Bristol 40 - Agape - 14**



**Bristol 40 - Agape - 15**



**Bristol 40 - Agape - 16**



**Bristol 40 - Agape - 17**



**Bristol 40 - Agape - 18**



**Bristol 40 - Agape - 19**



**Bristol 40 - Agape - 20**



**Bristol 40 - Agape - 21**



**Bristol 40 - Agape - 22**



**Bristol 40 - Agape - 23**



**Bristol 40 - Agape - 24**



**Bristol 40 - Agape - 25**



**Bristol 40 - Agape - 26**



**Bristol 40 - Agape - 27**



**Bristol 40 - Agape - 28**



**Bristol 40 - Agape - 29**



**Bristol 40 - Agape - 30**



**Bristol 40 - Agape - 31**



**Bristol 40 - Agape - 32**



**Bristol 40 - Agape - 33**



**Bristol 40 - Agape - 34**



**Bristol 40 - Agape - 35**



**Bristol 40 - Agape - 36**



**Bristol 40 - Agape - 37**



**Bristol 40 - Agape - 38**



**Bristol 40 - Agape - 39**



**Bristol 40 - Agape - 40**



**Bristol 40 - Agape - 41**



**Bristol 40 - Agape - 42**



**Bristol 40 - Agape - 43**



**Bristol 40 - Agape - 44**



**Bristol 40 - Agape - 45**



**Bristol 40 - Agape - 46**



**Bristol 40 - Agape - 47**



**Bristol 40 - Agape - 48**



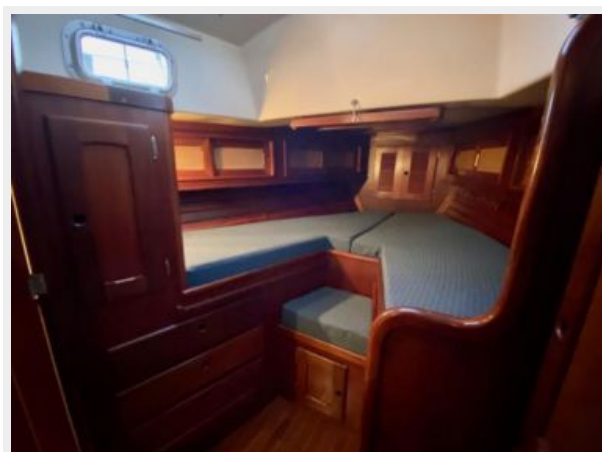
**Bristol 40 - Agape - 49**



**Bristol 40 - Agape - 50**



**Bristol 40 - Agape - 51**



**Bristol 40 - Agape - 52**



**Bristol 40 - Agape - 53**



**Bristol 40 - Agape - 54**



**Bristol 40 - Agape - 55**



**Bristol 40 - Agape - 56**



**Bristol 40 - Agape - 57**



**Bristol 40 - Agape - 58**



**Bristol 40 - Agape - 59**





**Bristol 40 - Agape - 60**



**Bristol 40 - Agape - 61**



**Bristol 40 - Agape - 62**



**Bristol 40 - Agape - 63**



**Bristol 40 - Agape - 64**



**Bristol 40 - Agape - 65**



**Bristol 40 - Agape - 66**



**Bristol 40 - Agape - 67**



**Bristol 40 - Agape - 68**



**Bristol 40 - Agape - 69**



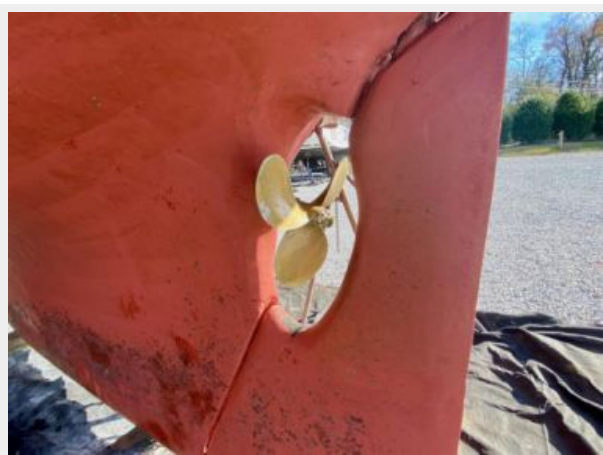
**Bristol 40 - Agape - 70**



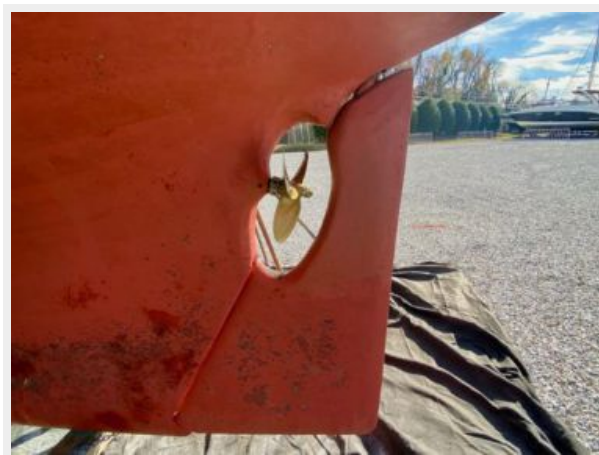
**Bristol 40 - Agape - 71**



**Bristol 40 - Agape - 72**



**Bristol 40 - Agape - 73**



**Bristol 40 - Agape - 74**



**Bristol 40 - Agape - 75**



**Bristol 40 - Agape - 76**



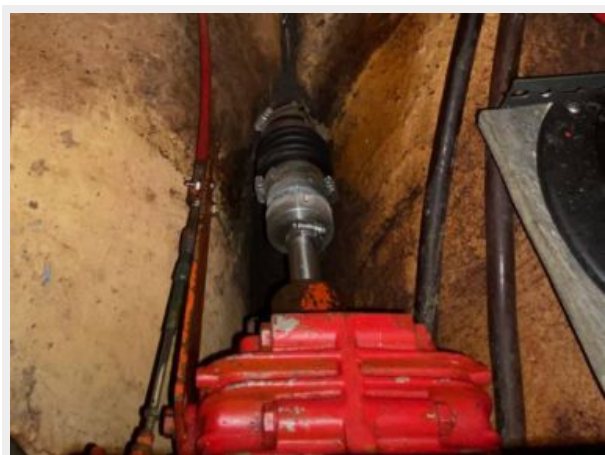
**Bristol 40 - Agape - 77**



**Bristol 40 - Agape - 79**



**Bristol 40 - Agape - 78**



# КОНТАКТЫ

---

Андрей Шестаков (Andrey Shestakov) – ведущий яхтенный брокер отдела продаж яхт и судов компании Shestakov Yacht Sales Inc. Официальный представитель Shestakov Yacht Sales Inc. для русскоговорящих клиентов в центральном офисе компании в Майами/Форт Лодердейл/Флорида/США.

## Контактная информация

---

Email: [andrey@shestakovyachtsales.com](mailto:andrey@shestakovyachtsales.com)

Web: [shestakovyachtsales.com](http://shestakovyachtsales.com)

## Телефоны

---

Краснодарский край: **+7(918)465-66-44**

США, Майами, Флорида: **+1(954)274-4435**

## Время работы

---

Понедельник – Суббота: **9:00 - 21:00**  
EDT

Воскресенье: **Закрето**

## Адрес

---



Harbour Towne Marina, 850 NE 3rd St,  
STE 213, Dania, FL 33004