

## NAMASTE — MANGUSTA



**Builder:** MANGUSTA

**Year Built:** 2017

**Model:** Motor Yacht

**Price:** PRICE ON APPLICATION

**LOA:** 141' (42.98mm)

**Beam:** 28.41

**Max Draft:** 8' 2" (2.49mm)

**Cruise Speed:** 13 Knots Kts. (15 MPH)

**Max Speed:** 16 Knots Kts. (18 MPH)

Our experienced yacht broker, Andrey Shestakov, will help you choose and buy a yacht that best suits your needs **Namaste — MANGUSTA** from our catalogue. Presently, at Shestakov Yacht Sales Inc., we have a wide variety of yachts available on our sale's list. We also work in close contact with all the big yacht manufacturers from all over the world.

If you would like to buy a yacht **Namaste — MANGUSTA** or would like help answering any questions concerning purchasing, selling or chartering a yacht, please call **+1(954)274-4435**

---

# TABLE OF CONTENTS

---

TABLE OF CONTENTS	2
SPECIFICATIONS	3
Overview	3
Basic Information	3
Dimensions	3
Speed, Capacities and Weight	3
Accommodations	3
Hull and Deck Information	4
Engine Information	4
PHOTOS	5
CONTACTS	8
Contact details	8
Telephones	8
Office hours	8
Address	8

---

# SPECIFICATIONS

---

## Overview

---

PRELIMINARY SPECS NOT FOR SALE IN US WATERS TO US CITIZENS/RESIDENTS On its very first world appearance, this brand new beautiful three deck model, Mangusta Oceano 42, was awarded the World Yachts Trophies in the "Best Layout", 38-54M category. Designed by Alberto Mancini, Namasté has been a major step forward for Overmarine Group Shipyard in building steel and aluminum full displacement yachts. The vessel is a steel hulled full displacement oceangoing motoryacht with a bulbous bow and bilge keels. She is beautifully modern and elegant which expresses her proportions through a blend of taught, sharplines, combined with softer sections. With the light aboard. \*\*Hull Material: Steel Hull, Aluminum Super Structure

## Basic Information

---

**Category:** Motor Yacht

**Sub Category:** Mega Yacht

**Model Year:** 2017

**Year Built:** 2017

## Dimensions

---

**LOA:** 141' (42.98mm)

**LWL:** 120' 5" (36.7mm)

**Beam:** 28.41

**Max Draft:** 8' 2" (2.49mm)

## Speed, Capacities and Weight

---

**Cruise Speed:** 13 Knots Kts. (15 MPH)

**Max Speed:** 16 Knots Kts. (18 MPH)

## Accommodations

---

**Total Cabins:** 5

**Total Heads:** 12

---

## Hull and Deck Information

---

**Hull Material:** Aluminum

---

## Engine Information

---

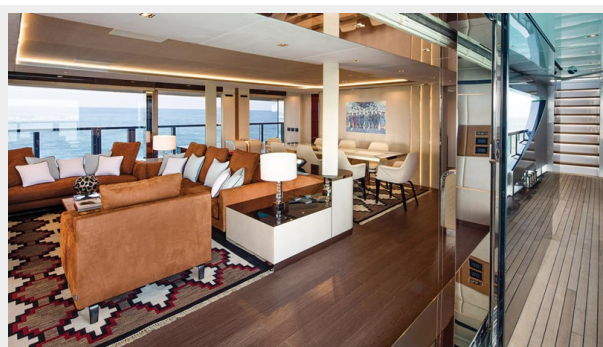
**Engines:** 2

**Manufacturer:** MTU

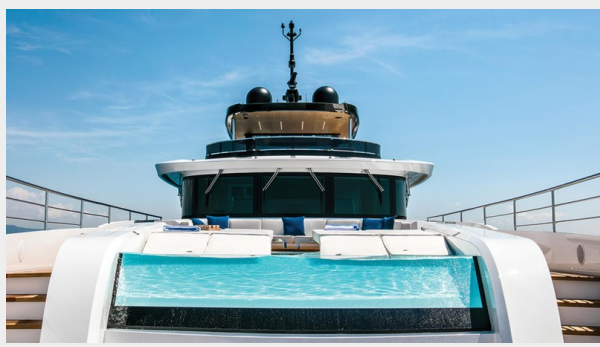
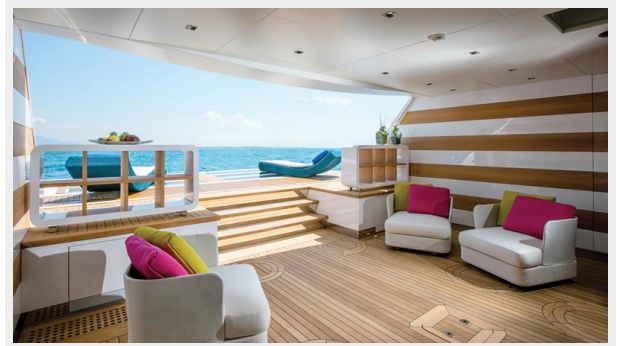
**Engine Type:** Inboard

**Fuel Type:** Diesel

# PHOTOS







---

# CONTACTS

---

Andrey Shestakov, leading yacht broker of the sales department of Shestakov Yacht Sales Inc. Shestakov Yacht Sales Inc., the official representative of the Miami/Fort Lauderdale FL headquarters.

---

## Contact details

---

Email: [andrey@shestakovyachtsales.com](mailto:andrey@shestakovyachtsales.com)

Web: [shestakovyachtsales.com/en/](http://shestakovyachtsales.com/en/)

---

## Telephones

---

USA: +1(954)274-4435

---

## Office hours

---

Monday – Saturday: **9:00 - 21:00** EDT

Sunday: **closed**

---

## Address

---



Harbour Towne Marina, 850 NE 3rd St,  
STE 213, Dania, FL 33004