

R-SIX — HH CATAMARANS



Builder: [HH Catamarans](#)

Year Built: 2016

Model: Catamaran

Price: PRICE ON APPLICATION

Location: Croatia

LOA: 66' 0" (20.10m)

Beam: 28' 7" (8.70m)

Min Draft: 6' 3" (1.88m)

Max Draft: 13' 2" (4.00m)

Cruise Speed: 8 Kts. (9 MPH)

Max Speed: 12.5 Kts. (14 MPH)

Our experienced yacht broker, Andrey Shestakov, will help you choose and buy a yacht that best suits your needs **R-SIX — HH Catamarans** from our catalogue. Presently, at Shestakov Yacht Sales Inc., we have a wide variety of yachts available on our sale's list. We also work in close contact with all the big yacht manufacturers from all over the world.

If you would like to buy a yacht **R-SIX — HH Catamarans** or would like help answering any questions concerning purchasing, selling or chartering a yacht, please call **+1(954)274-4435**

TABLE OF CONTENTS

TABLE OF CONTENTS	2
SPECIFICATIONS	5
Overview	5
Basic Information	5
Dimensions	5
Speed, Capacities and Weight	5
Accommodations	6
Hull and Deck Information	6
Engine Information	6
DETAILED INFORMATION	7
Overview	7
Walkthrough	8
Key Features	8
Accommodations	8
Construction	10
Deck Equipment	10
Docking & Anchoring	11
Propulsion and Maneuvering Systems	11
Steering	12
Electrical	12
Navigation and Communication System	13
Helm Station	13
Mast & Rigging	13
Sails	15
Safety	15
Plumping & Tanks	16
Ventilation, Air Conditioning & Heating	16
Appendages	16

Finishes	17
Upgrades	17
Broker Comments	18
Exclusions	18
Disclaimer	18
PHOTOS	19
Dining Area	19
Galley	19
Galley	19
Helm	19
Galley	19
Helm	20
Helm	20
Master Stateroom	20
Master Stateroom	20
Master Stateroom	20
Master Bath	20
Master Bath	21
Guest Stateroom	21
Guest Bath	21
Guest Stateroom	21
Guest Bath	21
Guest Stateroom	21
Crew Quarters	22
Crew Bath	22
Aft Deck	22
thumbnail_Capture d'écran 2020-12-17 à 19.19.08	24
General Arrangement- Main Deck	24
General Arrangement- Below Deck	24

HH6601 General Arrangement	25
CONTACTS	26
Contact details	26
Telephones	26
Office hours	26
Address	26

SPECIFICATIONS

Overview

*Not for sale to US residents while in US waters. R-SIX is an award-winning, full carbon sailing yacht built by HH Catamarans with design and engineering by the renowned Morelli & Melvin. The yacht is a perfect blend of both performance and safe cruising, and is ideal for an owner looking for exciting sailing alongside comfortable family cruising. Thanks to the extensive equipment on board, such as the 110l/h watermaker, 2x12kW generators and solar panels, she is also self-sufficient, allowing for extended cruising and peace of mind. The HH66 has won multiple awards, including the prestigious Overall Boat of the Year by Sailing World Magazine and Best Boat - Multihull by Sail Magazine, and R-SIX is a proven and respected competitor on the regatta circuit. R-SIX is now for sale in excellent condition. She has been professionally maintained, and her experienced owner has continued to upgrade the yacht since her launch. Able to cruise more than 350nm per day and with a top speed of 12.5 knots with using the engines, the yacht is at home in any condition and is the right fit for any type of owner looking for a quality sailing catamaran. Lying in Croatia, R-SIX is in pristine condition and ready to go, all systems serviced and waiting for new adventures. Video tour available before travel upon request.

Basic Information

Category: Catamaran

Model Year: 2016

Year Built: 2016

Country: Croatia

Dimensions

LOA: 66' 0" (20.10m)

Beam: 28' 7" (8.70m)

Min Draft: 6' 3" (1.88m)

Max Draft: 13' 2" (4.00m)

Speed, Capacities and Weight

Cruise Speed: 8 Kts. (9 MPH)

Max Speed: 12.5 Kts. (14 MPH)

Water Capacity: 158.5032312 Gallons

Fuel Capacity: 198.129039 Gallons

Accommodations

Total Cabins: 3

Sleeps: 6

Crew Cabin: 1

Crew Sleeps: 2

Hull and Deck Information

Hull Material: Carbon Fiber

Hull Configuration: Catamaran

Engine Information

Engines: 2

Manufacturer: Yanmar

Model: 4JH80

Fuel Type: Diesel

DETAILED INFORMATION

Overview

Built by HH Catamarans in full Carbon and designed and engineered by the renowned Morrelli & Melvin, assuring the perfect calculation for performance and safe cruising. R-SIX is the perfect Sailing Catamaran for an owner looking for a blend of performance or extended cruising with his family. Thanks to the extensive equipment on board such as the 110l/h watermaker, 2x12kW generators, solar panels allowing her to be self-efficient.

The HH66 has been awarded Overall Boat of the Year by Sailing World Magazine and Best Boat - Multihull by Sail Magazine. R-SIX is now for sale in excellent condition as she has been professionally maintained. The experienced owner has continued to upgrade the catamaran during his ownership. Able to cruise more than 350nm per day, R-SIX can fit any type of owner looking for a quality sailing catamaran. The top speed of 12.5 knots using the engines gives the ability to use the vessel in any condition.

The 2 helm stations give better maneuverability and comfort combined with the latest technology as the Mainsheet bridle operated by hydraulic rams from a push button. The retractable Boards give a draft of only 1.8m once up to access shallow waters. In addition to her racing capability, R-SIX features luxury materials in the interior and a smart layout allowing for both exterior and interior space.

The main aft deck exterior has a sitting area with a table in addition to the 2 helm stations and large access to the swimming platforms which make the maneuver easier and the cruising safer for a family with kids. At anchor, the large trampoline is the perfect place to relax and admire the landscape.

The main salon is spacious with a kitchen and a bar as well as a dining area. The master cabin dedicated to the port hull you will find a queen berth, plenty of storage, a private head and large shower. The starboard hull accommodates 2 queen guest cabins both with ensuite facilities. The crew accommodation is in the port bow with private access, comprising of a twin bunk beds with ensuite. All cabins including the main salon have an individual A/C air handler and the solar panels provide 1kw of clean electricity.

Lying in Croatia, R-SIX is turn-key and ready to go, all systems serviced and waiting for new adventures afar.

Walkthrough

- Twin aft helm stations allowing for best sailing and maneuvering control
- Halyards, reefing lines and furling lines controlled from generous forward cockpit
- Mainsheet is a bridle, operated by hydraulic rams with push button control
- Headsail sheets led aft to helm stations
- Exceptionally large and spacious saloon
- Galley bar and large galley counters in Corian
- Dedicated forward facing nav station
- Dedicated port hull master king berth with settee, ample storage, separate head with deluxe large separate shower
- Two queen guest cabins with ensuite heads and separate showers to starboard
- Crew cabin with twin bunks and head in port bow, head, shower and vanity

Key Features

- In new condition as she has been Professionally maintained
- 100% carbon construction giving high performance
- A full hull dedicated to the master cabin
- Highly equipped for race and extended cruising with a lot of brand new equipments
- Pedigree catamaran winner of the last 3 Antigua Sailing Week and 2nd at Les Voiles de St.Barth
- R-SIX was 2nd at The Rolex Fastnet Race in 2017

Accommodations

AFT COCKPIT

- Daybed with red Ultra-Leather wrapped 5" reticulate open cell foam cushions
- Outdoor dining area with seating for six
- Storage lockers beneath daybed and settee, including gas storage
- Removable stainless steel swim ladder for transom steps
- Caulked teak floor
- Outdoor hot-cold water shower at starboard transom
- Ample drains directly through wing deck overboard
- Carbon dinghy davits controlled from aft beam winches
- Gas BBQ to starboard with adjoining sink

- Fishing rod/flagpole holders
- 2 x Fusion 4" marine 2-way speakers in aft cockpit

MAIN SALON

- Interior finish in high gloss walnut with solid walnut capping, carbon highlights and red styling stripe
- Navigation/communication station on port side; ample room for electronics
- Touch screen electrical controls
- Synthetic leather "Whisper Wall" ceiling and corridor coverings
- L-shaped settee with Ultra-Leather wrapped 5" reticulate open cell foam cushions
- 3 x Custom lightweight carbon stackable chairs
- Table in light veneer
- Hinged, toughened glass door access to forward cockpit
- Retractable Smart TV
- 4 x Fusion 4" marine speakers in white with Fusion digital amplifier and subwoofer

GALLEY

- 4-burner induction stove with induction microwave oven and stainless safety bar
- Ample storage cabinets below counters, pot and pan drawer under stove
- Double stainless-steel sink with faucet
- 2 x Vitrefrigo fridge drawers below counter
- 2 x Vitrefrigo freezer drawers below counter
- 2-drawer Fisher Paykel dishwasher
- Lightweight polished black Corian countertop surfaces
- Icemaker
- Wine cooler
- Sweet water faucet supplied by water maker

PORT HULL - MASTER STATEROOM

- The master stateroom occupies the entire port hull living quarters
- Queen sized berth
- Storage shelves
- Storage cabinets
- Clothes and towel hooks
- Settee, leather
- Retractable Smart TV
- Ensuite head and separate shower
- Carbon toilet
- Vanity with wash basin, mirror and Corian countertops

STARBOARD HULL - GUEST STATE ROOMS

- Two guest cabins occupy the starboard hull

- Queen sized berth in aft cabin
- Full sized berth in forward cabin
- Storage shelves
- Storage cabinets
- Clothes and towel hooks
- Each cabin has private ensuite head and separate shower
- Carbon toilets
- Vanities with wash basin, mirror and Corian countertops

CREW QUARTERS

- Occupies port bow, accessed through deck hatch
- 2 x single berths
- Storage shelves
- Storage cabinets
- Clothes and towel hooks
- Head with toilet, vanity and shower
- Air conditioned

Construction

- Designed and structurally engineered to exceed strict CE & ISO Regulations
- Female moulded hull and deck construction
- Infused carbon, epoxy, foam sandwich construction, post-cured in oven, for maximum strength
- Thermoformed core to increase strength and reduce weight
- Additional carbon fiber reinforcing in highly loaded areas
- Carbon fiber longitudinal stringers and ring frames
- Carbon fiber longeron
- Watertight crash zone bow and forefoot, in case of impact
- Watertight bulkheads, sealed off bow and stern compartments
- Structural composite hull floors to save weight and add stiffness
- Carbon fiber chain plates
- Clean coat carbon finish

Deck Equipment

- 2 x Aluminium 2-speed Lewmar Evo80 electric self-tailing alloy 24V winches with toe controls for all lines at helm stations
- 2 x Harken 990 has been added to front pit to replace old Lewmar 65
- Carbon 3-speed Lewmar 65 electric self-tailing winch 24V, with 2 x toe controls for reacher, spinnaker furling
- 2 x Aluminium 2-speed Lewmar Evo80 electric self-tailing alloy 24V winches with toe

controls for reacher / asymmetric sheets

- All winches with individual “Kill” switches
- 4 x 10” aluminum winch handles with holders
- Spinlock or constrictor clutches for control lines where needed
- Harken fore and aft jib tracks with 2 x adjustable pin cars on coachroof
- Push button hydraulic bridle mainsheet using Cariboni 1:4 Magic Trim rams
- 2 x Reacher sheet system consists
- Harken padeyes and 2 x Harken blocks
- Continuous line furler for reacher
- Harken mast base blocks on soft lashings
- Forward trampolines, with Spectra border
- line, lashed individually every 150mm for maximum safety
- Composite stanchions (1m) with three levels of Spectra lifelines
- Lewmar 10 Flush deck hatches, one per head, with bug and privacy screens
- Lewmar 44 Flush deck hatches, one per stateroom, with bug and privacy screens
- 4 x Lewmar opening port lights, (1) per stateroom and head, with bug and privacy screens
- 2 x CE certified escape hatches in accordance with CE/ISO regulations
- Saloon and topside windows, tinted toughened glass in accordance with CE/ISO regulations

Docking & Anchoring

- 4 x 50' x 3/4" Mega Braid docklines
- 4 x 30' x 3/4" Mega Braid docklines
- 6 x 12" x 36" and (2) 18" x 60" inflatable fenders with soft fabric covers
- Exit Carbon custom carbon aft boarding Passarella
- 8kW 24v retracting Sidepower bow thruster with 225A AGM batteries
- 8 x Nomen clip cleats
- Anchor rodes: 60m of 12mm SS chain with 22m of nylon rode; 15m of 8mm SS chain with 45m of nylon rode
- Anchor bridle with shackle that clips onto the anchor chain
- 2 x Lewmar anchor bridle padeyes on inboard hull sides with backing plates
- SS anchor roller exit forward underwing
- Salt and fresh water wash down in anchor locker
- Rope/chain automatic gypsy sized for chain and 3-strand nylon anchor rode
- Lewmar V5 electric windlass inside forward underwing locker
- Rocna 55kg anchor
- Foldable Fortress 21kg anchor

Propulsion and Maneuvering Systems

- 2 x Yanmar diesel 4JH80 (80hp) with SD60 saildrives

- 3-blade Bruntons folding props for minimum drag
- Retracting 8KW bow thruster
- Tachometer, fuel, hours, temperature, amp gauges
- Water temperature and oil pressure audio alarms
- 3 x Engine throttle control/gear shift, 2 x at helm stations, one at nav station
- Engine room ventilation blower with 3" ventilation hoses
- Vetus engine silencer, muffler, and water lift with water separator, gas through under wing/chamfer panel and water below waterline
- Oil changers plumbed for engine and transmission in each engine box
- 2 x 375 litre polypropylene diesel fuel tank with cleanout ports and appropriate baffles
- Filterboss fuel and water separators w/changeover valve for each fuel system, includes fuel polish capability
- Shut-off valve on fuel tanks
- 2 x SS fuel tank deck fills, per hull
- Fuel tank fuel transfer from port to starboard

Steering

- 2 x 1050mm carbon fiber sculptured race boat steering wheels
- Spade rudders with carbon fiber shafts
- 4 x JEFA self-aligning watertight bearings
- Ultra-low drag JEFA transmission and chain steering system for ultimate helm feel and responsiveness
- Carbon crossbar with 2 x low play bevel boxes
- Water containment tube and watertight bulkhead in case of collision
- Emergency steering tiller
- 2 x Direct drive JEFA auto-pilot motors
- Custom dual helm steering system with pivoting pedestal system for steering on outboard helm seats

Electrical

- Designed to ABYC regulation
- Digital control and monitoring through C-Zone system
- 220v shore power
- Service in both 12 & 24v DC and 220v AC
- 2 x 12kW Fischer Panda generators in forward wing lockers with sound shield boxes
- 1kW, 4mm walk-on Solbian high efficiency solar panels
- 2 x 24v x 110A engine alternators
- 24v x 720 amp/hr Lithium-Ion house battery bank with built in battery management system
- 4 x Optima AGM starting batteries with 24v battery chargers
- 2 x 24v 100A Mastervolt Mass Combi inverter/charger (ship's systems, engine start, genset)

start, radio battery)

- Inverter 24VDC 5000W
- 84,000 BTU Dometic air conditioning unit with individual air handlers in each cabin and salon

Navigation and Communication System

- 6 x Zuess 19" multi-function touch screen displays, with insight charts: 2 x at each helm and 2 x at nav station
- B&G Hercules H5000 processor
- C-Zone digital switching with integrated iPad control
- 4G Radar Broadband system
- GoFree wireless router
- KVH sat comms
- V90 VHF w/handset and speaker
- NSPL-400 VHF antenna splitter
- NAIS-400 S system, Class B AIS System w/ GPS Antenna, 10Hz
- Vertical masthead unit pack
- Triton speed/depth/wind pack
- 2 x Triton Autopilot controllers
- B&G RC42N rate compass
- Rudder reference unit

Helm Station

- Two helm stations, (port & starboard) for superior visibility for maneuvering and natural helming position for racing
- 2-person helm seat and back rest with red Ultra-Leather wrapped 5" reticulate open cell foam cushions at each helm
- 1050mm custom carbon steering wheel at each helm
- 2 x Lewmar Evo 80 winches at each helm
- Winch handle and pocket at each helm
- Engine start controls and throttles at each helm
- Push button controls for electric winches
- Push button controls for hydraulic mainsheet
- Push button controls for electric daggerboard line drivers
- 2 x 19" Zues B&G screen at each helm

Mast & Rigging

MAST

- Southern Spars carbon fiber fractional non-rotating mast
- Mast, masthead, spreaders finished with 2-part clear coat paint
- Prepreg standard modulus carbon fiber autoclave baked for minimum voids
- Stainless mast step and foot. Internal hydraulic mast jack to allow adjustment of shrouds and diamond tension
- Carbon fiber gooseneck with stainless steel pin
- Mesh conduit for mast electrical cables
- Foldaway aluminum steps to access main halyard
- Halyards lead to forward pit
- Halyard storage in forward pit
- Halyard locks for:
 - Main halyard 2:1, 3 reef points, external Harken lock
 - Reacher halyard, 1:1, above hounds, end of longeron, top down furler
 - Solent halyard, lashed off at top when raised
 - Staysail halyard, removable stay option for hanked on sails, on jammer when tending halyard, on winch when loaded
- Fixed Lazy Jacks lead to spreaders for easy sail hoisting
- 2 x Spreader lights for foredeck
- Topping lift 1:1
- Cunningham for full hoist mainsail and 2nd reef lead to winch
- Second Cunningham for reef 1 and reef 3 lead to winch
- Harken switch track battcar system for fat head mainsail (30% headboard) with detachable Anomaly headboard to enable easy lowering into stack pack
- Hoist able covers on minor halyards for reacher and solent
- Ion dispensing lightning protection connected to hull Dyna plate

BOOM

- Southern Spars prepreg standard modulus carbon fiber autoclave baked for minimum voids
- V-boom tube with stylized racks for mainsail stack with sheave boxes and locks for 3 reef lines lead forward to mast and to winches in forward cockpit
- Mainsail cover
- Pad eye and Spectra strop for lashing loose footed mainsail clew
- Lazy Jack/ stack pack for main sail
- Karver reef hooks for reefs 1-3

LONGERON

- Southern Spars prepreg standard modulus carbon fiber autoclave baked for minimum voids
- Custom deep dual tapered section
- 3:1 tack for reacher and spinnaker tack and staysail tack
- Carbon attachment points for the solent forestay, staysail tack, reacher tack
- Reacher and staysail tack lines attached to one way Antal track to lock position
- Dyneema whisker stays to each bow with lashed ends for articulation
- Carbon Pelican Striker with fixed length EC6 carbon martingale stays

- Under longeron stays attach to sides of anchor box for vertical support
- Lopo port/stbd navigation light on end of longeron
- STANDING RIGGING
- Custom aramid forestay with furler for solent
- 2 x Custom aramid lower and 2 x cap shrouds with loops to chain plates
- Custom EC6 carbon superior and inferior diamond with integral turnbuckles
- Custom EC6 carbon martingales with loops to chain plates
- Reacher torsional stay “Code 0 style”

RUNNING RIGGING

- Dyneema halyards with double braid polyester control lines
- Halyard control lines led to forward pit
- Furling lines lead to forward pit
- Sail control lines led to port and stbd helm stations
- Halyards and control lines equipped with lashing ends, including:
- Hydraulic Cariboni 1:4 Magic Trim main sheet bridle
- Tack, cunningham and reef lines run to forward cockpit
- 2 x Solent sheets run to each helm
- 2 x Staysail sheets run to each helm
- 2 x Reacher sheets run to aft cockpit winches
- 2 x Asymmetric sheets run to aft cockpit winches
- Main halyard 2:1
- Solent halyard 1:1
- Staysail halyard 1:1
- Reacher/asymmetric halyard 1:1
- Loops or shackles for all blocks
- Reacher furler line lead to forward cockpit
- Solent furler line lead to forward cockpit

Sails

- Mainsail - Evolution, 3 reef points with batch system, custom Sunbrella sail cover
- Jib – Evolution, luff for furling system, with UV leech protection, with removable cover
- Staysail Jib - Evolution, luff for soft hank on system with cover
- Reacher - Evolution, luff for furling system, with removable cover
- Asymmetrical - Evolution, with top-down furling
- Storm Jib – Evolution
- A2 gennaker added (365 sqm)

Safety

- 6-man SOLAS life raft with survival package
- 2 x EPIRBs
- Numerous PFDs and safety harnesses
- Concealed electric davit winch, Sunbrella fitted cover

Plumping & Tanks

- 2 x Water tank SS fillers, one per hull
- 2 x Technicomar Sailor Compact watermaker; 110 litre/hour
- Hot and cold pressure water system in each hull
- Hot and cold pressure outdoor shower on starboard transom steps
- 2 x Isotherm 110 litre hot water heater 220v/750w and engine transfer heating, one in each hull
- Displacement pumps 2 x Headhunter for steady pressure, less pump wear
- Electronic NMEA 2000 gauges for water tanks, waste tanks, and fuel tanks
- 2 x Salt/fresh water wash down pumps for decks, anchor rode and windlass: one in anchor locker, one in starboard transom
- 2 x Black water tanks, 150-liter tank per hull
- Sewage treatment plant
- 2 x Deck pump-out ports for removal of black water
- All sanitation hose odor resistant
- All flush mounted composite thru-hull fittings below waterline
- All plumbing hoses are double clamped below waterline
- Electric bilge pump system in each hull
- 2 x Polypropylene 300 liter water tanks
- Portable emergency manual bilge pump

Ventilation, Air Conditioning & Heating

- Manual blinds for each deck hatch and windows in the living spaces
- Custom fixed, acrylic windows in hull with Lewmar opening ports in each head
- Air conditioning and reverse cycle heat system, 84,000 BTU
- 2 x Zoned air conditioning in saloon, 2 x starboard cabins and 2 x port cabins

Appendages

- Symmetric curved (C) Daggerboards, 6m long, constructed with T700 prepreg carbon epoxy spars, foam sandwich construction with carbon fiber skins
- Curved daggerboard cases built into outer hull side for maximum weight saving, constructed with vacuum bagged, carbon fiber, epoxy foam sandwich construction

- Fixed Vesconite top and bottom bearings, no metal or moving parts
- Up and down daggerboard control line systems with 2 x Antal 1500-watt line drivers
- Push button daggerboard controls at both helm stations
- Includes automatic string pot stopping system to prevent over-hoisting or lowering the daggerboards

Finishes

- Proprietary clear coated carbon topsides
- Non-skid decks with standard 'sand grip finish'
- Hard semi-ablative antifouling on hull bottoms, daggerboard tips and rudders
- Alexseal gloss paint on some bulkheads, interior hull
- Whisperwall synthetic liner on hull and ceiling surfaces
- Rolled grey epoxy barrier paint in bilges
- Exterior storage lockers: carbon surfaces sealed with rolled white epoxy paint
- Interior doors in high gloss dark walnut wood veneer with real gloss carbon inlays
- Interior joinery in high gloss dark walnut veneer with real carbon accents and inlaid red styling stripe
- Galley and head counter surfaces finished in lightweight black Corian with solid walnut fiddles
- Salon tabletop finished in gloss black Corian with teak inlay and solid walnut fiddle
- Counter tops finished in high gloss walnut with solid walnut fiddles
- Durable Amtico synthetic flooring in dark walnut with ivory stripes
- Exterior cockpit table in carbon
- Padded covers for interior and exterior table and counter tops in black Sunbrella
- Exterior caulked teak sole in forward and aft cockpit
- Interior seating upholstery in red Ultra Leather
- Exterior seating in red Sunbrella
- Exterior helm chairs in red Ultra Leather

Upgrades

- The bowsprit has been extended by 850mm
- Standing rigging has been replaced for new one with long warranty
- New bigger A2 gennaker added (365sqm)
- Added extra sheave to the mast 890mm above existing lock
- The electric daggerboard lifting system was replaced with manual one
- 2 x Harken 990 has been added to front pit and replace old Lewmar 65
- Mast fully reinspected
- Bottom of boat repainted with antifouling paint

Broker Comments

R-SIX is an award-winning, full carbon sailing yacht built by HH Catamarans with design and engineering by the renowned Morelli & Melvin. The yacht is a perfect blend of both performance and safe cruising, and is ideal for an owner looking for exciting sailing alongside comfortable family cruising. Thanks to the extensive equipment on board, such as the 110l/h watermaker, 2x12kW generators and solar panels, she is also self-sufficient, allowing for extended cruising and peace of mind. The HH66 has won multiple awards, including the prestigious Overall Boat of the Year by Sailing World Magazine and Best Boat - Multihull by Sail Magazine, and R-SIX is a proven and respected competitor on the regatta circuit.

R-SIX is now for sale in excellent condition. She has been professionally maintained, and her experienced owner has continued to upgrade the yacht since her launch. Able to cruise more than 350nm per day and with a top speed of 12.5 knots with using the engines, the yacht is at home in any condition and is the right fit for any type of owner looking for a quality sailing catamaran. Lying in Croatia, R-SIX is in pristine condition and ready to go, all systems serviced and waiting for new adventures. Video tour available before travel upon request.

Exclusions

Owner's personal belongings.

Disclaimer

The Company offers the details of this vessel or yacht in good faith but cannot guarantee or warrant the accuracy of this information nor warrant the condition of the vessel. A buyer should instruct his representatives, agents, or his surveyors, to investigate such details as the buyer desires validated. This vessel or yacht is offered subject to prior sale, price change, or withdrawal without notice.

PHOTOS



Dining Area



Galley



Galley



Galley



Helm



Helm



Helm



Master Stateroom



Master Stateroom



Master Stateroom



Master Bath



Master Bath



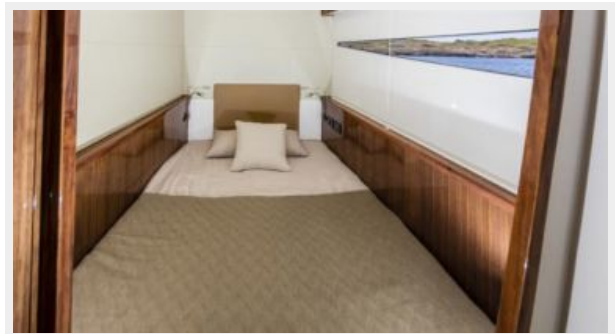
Guest Stateroom



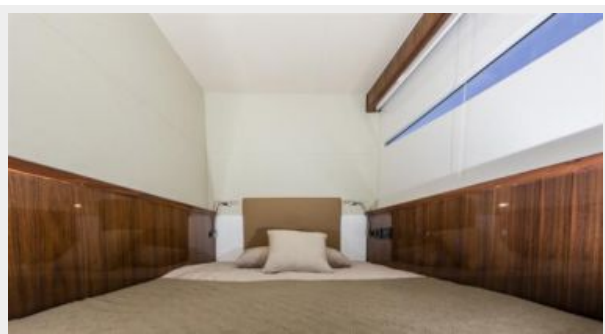
Guest Bath



Guest Stateroom



Guest Stateroom



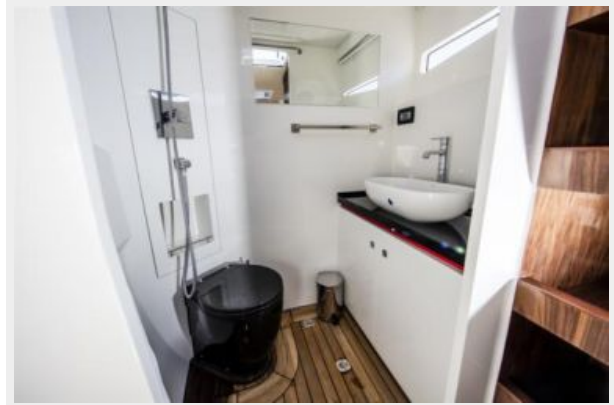
Guest Bath



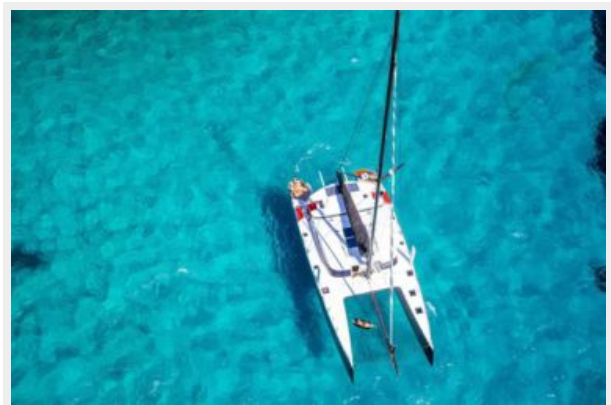
Crew Quarters



Crew Bath



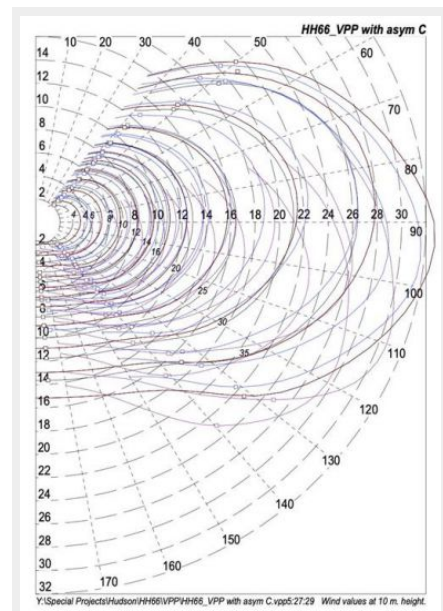
Aft Deck







thumbnail_Capture d'écran 2020-12-17 à 19.19.08



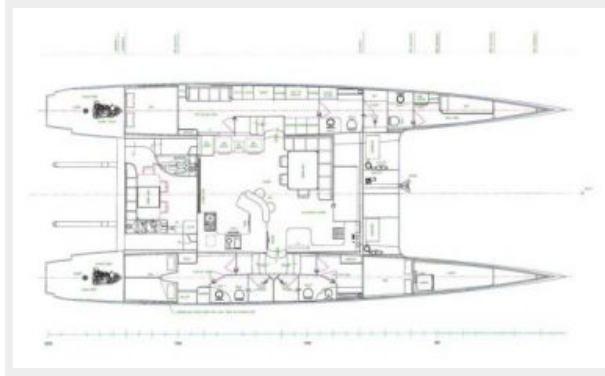
General Arrangement- Main Deck



General Arrangement- Below Deck



HH6601 General Arrangement



CONTACTS

Andrey Shestakov, leading yacht broker of the sales department of Shestakov Yacht Sales Inc. Shestakov Yacht Sales Inc., the official representative of the Miami/Fort Lauderdale FL headquarters.

Contact details

Email: andrey@shestakovyachtsales.com

Web: shestakovyachtsales.com/en/

Telephones

USA: +1(954)274-4435

Office hours

Monday – Saturday: **9:00 - 21:00** EDT

Sunday: **closed**

Address



Harbour Towne Marina, 850 NE 3rd St,
STE 213, Dania, FL 33004