

## HIS AND HERS — DEFEVER



**Builder:** DEFEVER

**Year Built:** 1988

**Model:** Trawler Yacht

**Price:** PRICE ON APPLICATION

**Location:** United States

**LOA:** 53' 0" (16.15m)

**Beam:** 16' 5" (5.00m)

**Max Draft:** 4' 8" (1.42m)

**Cruise Speed:** 10 Kts. (12 MPH)

**Max Speed:** 14 Kts. (16 MPH)

Our experienced yacht broker, Andrey Shestakov, will help you choose and buy a yacht that best suits your needs **His and Hers — DEFEVER** from our catalogue. Presently, at Shestakov Yacht Sales Inc., we have a wide variety of yachts available on our sale's list. We also work in close contact with all the big yacht manufacturers from all over the world.

If you would like to buy a yacht **His and Hers — DEFEVER** or would like help answering any questions concerning purchasing, selling or chartering a yacht, please call **+1(954)274-4435**

# TABLE OF CONTENTS

TABLE OF CONTENTS	2
SPECIFICATIONS	5
Overview	5
Basic Information	5
Dimensions	5
Speed, Capacities and Weight	6
Accommodations	6
Hull and Deck Information	6
Engine Information	6
DETAILED INFORMATION	7
Accommodations	7
Disclaimer	12
Exclusions	12
Disclaimer	12
PHOTOS	13
3__1988 53ft Defever 53 POC HIS AND HERS	13
2__1988 53ft Defever 53 POC HIS AND HERS	13
4__1988 53ft Defever 53 POC HIS AND HERS	13
5__1988 53ft Defever 53 POC HIS AND HERS	13
7__1988 53ft Defever 53 POC HIS AND HERS	14
6__1988 53ft Defever 53 POC HIS AND HERS	14
8__1988 53ft Defever 53 POC HIS AND HERS	14
9__1988 53ft Defever 53 POC HIS AND HERS	14
10__1988 53ft Defever 53 POC HIS AND HERS	14
11__1988 53ft Defever 53 POC HIS AND HERS	14
12__1988 53ft Defever 53 POC HIS AND HERS	15
13__1988 53ft Defever 53 POC HIS AND HERS	15
14__1988 53ft Defever 53 POC HIS AND HERS	15

15__1988 53ft Defever 53 POC HIS AND HERS	15
16__1988 53ft Defever 53 POC HIS AND HERS	15
17__1988 53ft Defever 53 POC HIS AND HERS	15
18__1988 53ft Defever 53 POC HIS AND HERS	16
19__1988 53ft Defever 53 POC HIS AND HERS	16
20__1988 53ft Defever 53 POC HIS AND HERS	16
21__1988 53ft Defever 53 POC HIS AND HERS	16
22__1988 53ft Defever 53 POC HIS AND HERS	16
23__1988 53ft Defever 53 POC HIS AND HERS	16
24__1988 53ft Defever 53 POC HIS AND HERS	17
25__1988 53ft Defever 53 POC HIS AND HERS	17
26__1988 53ft Defever 53 POC HIS AND HERS	17
27__1988 53ft Defever 53 POC HIS AND HERS	17
28__1988 53ft Defever 53 POC HIS AND HERS	18
29__1988 53ft Defever 53 POC HIS AND HERS	18
31__1988 53ft Defever 53 POC HIS AND HERS	18
30__1988 53ft Defever 53 POC HIS AND HERS	18
32__1988 53ft Defever 53 POC HIS AND HERS	18
33__1988 53ft Defever 53 POC HIS AND HERS	18
34__1988 53ft Defever 53 POC HIS AND HERS	19
35__1988 53ft Defever 53 POC HIS AND HERS	19
36__1988 53ft Defever 53 POC HIS AND HERS	19
37__1988 53ft Defever 53 POC HIS AND HERS	19
38__1988 53ft Defever 53 POC HIS AND HERS	19
39__1988 53ft Defever 53 POC HIS AND HERS	19
40__1988 53ft Defever 53 POC HIS AND HERS	20
41__1988 53ft Defever 53 POC HIS AND HERS	20
42__1988 53ft Defever 53 POC HIS AND HERS	20
CONTACTS	21

Contact details	21
Telephones	21
Office hours	21
Address	21

# SPECIFICATIONS

## Overview

In another lifetime, I spent a few days in Taiwan with **Arthur Defever** and had a major discussion as to which of his numerous designs he personally loved. His **POC (Performance Offshore Cruiser)** designs were his favorite as they provided a "salty" look, a sturdy seagoing platform, and a bit more speed than his traditional trawlers with the semi-displacement hull design. **His and Hers** is a truly outstanding example of the 53' POC. She has had enjoyed a truly incredible life with her current owners who have spoiled her like an only child. She has been constantly professionally maintained and updated. No expense has been spared. **His and Hers** has just arrived home in Stuart from her summer home in Boothbay Harbor Maine.. She will delight the most discriminating yachts person from her gleaming topsides to her white glove engine room.

The current owners are extremely knowledgeable and have traveled **45,500 nautical miles** while they have loved **His and Hers** since 2008. They have gone North and South 12 times, and have been as far North as Nova Scotia. **His and Hers** is a truly blue water sea going yacht that provides spacious, comfortable living with her extremely sea kindly hull design.

**CALL TO ARRANGE A VISIT TO THIS INCREDIBLY WELL FOUND VESSEL.**

**VIRTUAL VISITS ARE AVAILABLE.**

## Basic Information

<b>Category:</b> Trawler Yacht	<b>Model Year:</b> 1988
<b>Year Built:</b> 1988	<b>Country:</b> United States

## Dimensions

<b>LOA:</b> 53' 0" (16.15m)	<b>LWL:</b> 46' 9" (14.25m)
<b>Beam:</b> 16' 5" (5.00m)	<b>Max Draft:</b> 4' 8" (1.42m)

---

## Speed, Capacities and Weight

---

**Cruise Speed:** 10 Kts. (12 MPH)

**Max Speed:** 14 Kts. (16 MPH)

**Displacement:** 123000 Pounds

**Water Capacity:** 400 Gallons

**Holding Tank:** 99 Gallons

**Fuel Capacity:** 800 Gallons

---

## Accommodations

---

**Total Cabins:** 3

**Total Heads:** 3

---

## Hull and Deck Information

---

**Hull Material:** Fiberglass

---

## Engine Information

---

**Engines:** 2

**Manufacturer:** Caterpillar

**Model:** 3208TA

**Engine Type:** Inboard

**Fuel Type:** Diesel

---

# DETAILED INFORMATION

---

---

## Accommodations

---

**His and Hers** has a lovely covered aft deck which one crosses to access the custom interior of lovely matched teak wood through double doors. You will find a very bright and airy main saloon with plenty of large windows with great visibility. Immediately to the starboard side you will find a very useful bar with a U-line refrigerator/ice maker. Easy access to the aft deck entertaining. The private entrance down to the master suite and engine room is also located to starboard. Across the large saloon to port is wrap around seating with two hi/lo tables, two barrel chairs and abundant storage. There is a straight settee and storage located to starboard. Forward of the well planned galley with full sized appliances one enters into the pilothouse. In the pilothouse, one will find the lower helm with a great bench seat for guests to participate in the joy of navigation. The pilothouse has a full electronic complement as well as 3 Intra 2 speed self park windshield wipers large windows and custom Dutch doors. Down the forward companion way you will find yourself in the guest quarters which consists of 2 suites. If you choose to go up the internal stairs, you will find yourself on a massive fly bridge complete with a dance floor.

## GALLEY

The galley has Corian countertops with tons of storage cabinets with drawers located above and below the countertops. Your seagoing chef will appreciate the open workspace as well as the double stainless steel sinks located under the port side windows which do have custom shades. The galley has been so well thought out that there is even a custom trash drawer under the counter.

The 22 cubic foot side by side full sized Stainless steel Whirlpool refrigerator freezer (2017) complements the 4 burner range with overhead oven and microwave also in stainless. Your chef will be able to place gourmet creations on the breakfast bar to the delight of your crew while aboard **HIS AND HERS**.

## Main Saloon

The main saloon has a variety of places to sit and read or to enjoy the 32' flat screen TV connected to a **KVH** Satellite antenna. The large side and aft windows have custom blinds and drapes. The teak and holly sole sets off the warm teak wood of the cabinetry. Truly your home away from home.

## PILOTHOUSE

The pilothouse has a large settee with underneath storage, port and starboard dutch doors with custom screens for upper door. The Dutch doors were specifically designed and built for the current owners. Three large chart draws will accommodate backup paper charts. There are numerous storage areas throughout the pilothouse.

Electronics located in pilothouse are:

- COM M604 VHF radio
- Raymarine E165 MFD
- Raytheon ST60 data monitor
- Raymarine depth/speed monitor
- Raymarine autopilot control and remote smart controller for autopilot
- Glendinning synchronizer
- **Gyro Gale** Stabilizer control
- Samsung 15 inch slave screen connected to MFD,
- ACR Spotlight control
- Ritchie powerdamp compass

**MFD** receives **AIS**, **Sirius** weather and **FLIR** camera data as well as chart and navigation data

This lower command center of **HIS AND HERS** is truly well laid out and provides both Captain and Navigator ample room in which to work.

## MASTER STATEROOM

The master suite is a very wonderful getaway from the rest of your guests and even family members. A lovely teak companionway with hand made railing leads down to the master suite. directly from the main saloon. The center line Queen berth with a custom coil spring mattress makes for a perfect place to catch some zzzs. Dual hanging lockers, abundant storage utilizing both cabinets and drawers will hold all of your treasures. 6 portlights with tasteful drapes, a vanity/computer desk, and a teak and holly sole make this truly a great escape. The en-suite head has an enclosed shower, a **Dometic fresh water electric flush** which is self macerating(2015).

## MIDSHIP GUEST SUITE

The guest mid ship guest stateroom of **His and Hers** is located amidship. New custom mattress **(2018)**, 2 portlights with custom drapes and twin hi-lo bunks will accommodate another couple or two kids very easily. Reading lights, a vanity/computer desk and good storage utilizing a hanging locker and drawers will help to stash their belongings. The teak and holly sole is very yachty. Having an ensuite head provides total privacy for your guests. Separate shower stall, storage, and a **fresh water vacuum flush Dometic Head (2017)** along with portlight make this head very user friendly. Commercial grade vinyl wallpaper in a tasteful pattern was added in **(2017)** Teak and holly sole as well.

## VIP SUITE

Your VIP guests aboard **His and Hers** will find a large V-Berth with an insert and custom mattresses **(2018)**. The 3 portlights and the deck hatch provide light to this private cabin. There are hanging lockers, and lots of storage. The separate private head has been upgraded as have the **fresh water vacuum flush Dometic head (2017)**. Commercial grade wallpaper and



beautifully varnished teak and holly sole are easy on the eye. The only problem with this **VIP ensuite** is that it is so comfortable that your friends and family will not want to leave.

## FLYBRIDGE

**HIS AND HERS** has a huge flybridge that is accessible from the pilothouse through internal stairs or from the aft deck with a ladder/hatch combination. The flybridge offers a full helm forward with storage underneath. The visibility from this upper helm station of **HIS AND HERS** is excellent.

The bridge has great seating very conducive to entertaining. There is a L-shaped seating to port, 1 helm seat, and a bench seat to starboard,. The hinged radar arch, will help in sneaking under low bridges.

One also finds deck storage boxes which provide additional seating aft,. Her non-skid decks and stainless steel rails just all add to her seagoing comforts.

Equipment and electronics located on the flybridge:

- ICOM M604 VHF radio
- Raymarine E125 MFD
- Raytheon data repeater
- EPIRB
- **Gyro Gale Stabilizer** control.
- Dance floor.
- 8 man Viking life raft that is **current**.
- Electric dingy davit rated for **1500 lbs**.

The 11.5ft Caribe center console dinghy is also located on the flybridge. It has a Honda 30hp electric start and tilt motor.

**HIS AND HERS'** dinghy has all of the necessary gear to make cruising in the dink a safe and fun way to gunk hole or run to the beach.

Her equipment includes:

- Radio
- Depth finder
- Anchor with line
- Fire extinguishers (Current)
- Fenders

## ELECTRICAL

### Intercom System

The intercom system was updated in 2016. It has six stations: pilothouse, engine room, flybridge,

and each stateroom.

12v, 110v systems

## BATTERIES

**2 8D** 12 v start batteries are **new** 2020

There are 2 additional start batteries which are 6 years old. These are also additional **8D 12v** batteries.

There are **2 4D start** batteries for the **2 generators**.

40 amp **Charles** smart battery charger

The sound system on board **HIS AND HERS** has internal speakers in every cabin and on the covered aft deck and the flybridge.

## GENERATORS

**HIS AND HERS** is well set up for her different electrical needs. Even though the 2 generators were purchased one year apart, they are both PHASOR which means carrying spares is a lot easier than if they were two different manufacturers.

**21KW** Phasor generator **(2017) 1300 hrs**

**12.5KW** Phasor generator **(2019) 50 hours**

## ENGINE ROOM

The engine room of **HIS AND HERS** is accessed through a **full height** door opposite the master stateroom. From the door way you step down into the alleyway between the twin **Caterpillar 3208TA 375hp** engines. Oil and all filters are changed once a year in August, in all machinery. **June (2020)** Milton Caterpillar replaced the coolant pump on both engines.

Each engine has two **Racor** 1000FG 30 micron fuel filters and a 10 micron spin on fuel filter.

Forward of the engines is a shelf where a **full sized** washer, dryer and the water pump are located.

On the starboard side is a 21KW generator **(2017)** Phasor and a ESI 2 micron fuel polishing system. On the port side is a 12.5KW Phasor generator **(2019)**, and a **Raritan 20 gallon** water heater.

Each generator has one **Racor** 500FG 10 micron fuel filter, a Racor 2 micron fuel filter and a Phasor 10 micron fuel filter. **Redundancy** is very important .

A Charles 40 amp smart battery charger is located on the back wall along with components of the Gyro Gale Stabilizer system.

A Gyro Gale **pneumatic** stabilizer system was installed in 2016. This system consists of **4** external fins, an air compressor, expansion tank, and system controls located both in the engine room and the pilot house. The fins were upgraded to a new design in **2020**. The beauty of this stabilizer system is the fact that it is **pneumatic**. One does not need to fear a catastrophic failure of the stabilizer system and having it spit hot hydraulic fluid all over the engine room.

Two **200** gallon water tanks are located aft of the fuel tanks.

A custom 400 gallon fuel tanks are located forward of the engine with the fuel manifold on the forward wall under the shelf. There are even site gages located on the tanks that makes it easy to see just how much fuel you do have aboard.

A custom fiberglass **98.74** gallon holding tank is located in the bilge between the engines.

The engine room is very well laid out to accommodate the owner operator. It is easy to reach all important items. **HIS AND HERS** engine room is as spotless as the rest of the yacht.

**HIS AND HERS** is very economical to cruise, at **9-10 knots** she burns a miserly **7.5-8 gallons** per hour.

The pride of ownership is apparent everywhere one looks on board **HIS AND HERS**. The attention to yacht safety is also readily apparent. **HIS AND HERS** does not leave the dock on her yearly travels until every fire extinguishers have been inspected, all oil and filters have been changed. Halon system inspected, life raft in service and all Coast Guard safety items are current. These owners even actually file a **FLOAT PLAN** before making her North to South adventures. Rarely does one find a couple so meticulous about the safety and upkeep of a yacht.

## MAIN DECK

Ground tackle consists of a **Maxwell 3500** Twin gypsy anchor windlass.

A **60 lb** stainless steel hinged plow anchor with **200** feet of chain and a **70 lb** West Marine fluke anchor with 250 feet of chain.

Decks are nonskid with stainless steel side rails with teak toe rails and cap rails. Boarding gates are located on port and starboard. A **Marquipt** boarding ladder can be mounted on either side. A Marquipt folding boarding stair assembly can be mounted on either side. On the aft deck is a transom door leading to the **new fiberglass** swim platform (**2020**). A swim ladder is mounted on the swim platform. Four stainless steel fender racks are mounted on the bow rails.

There is a very comfortable bench seat directly in front of the pilothouse.

The decks are clean and very easy to navigate. **HIS AND HERS** has not needed for anything from paint to oil changes.

Her owners being the experienced yachts people that they are have an overabundance of

spares, safety equipment and always keep all systems in top notch running order. They regularly make overnight passages with just the two of them aboard and **everything** has to work.

---

## Disclaimer

The Company offers the details of this vessel in good faith but cannot guarantee or warrant the accuracy of this information nor warrant the condition of the vessel. A buyer should instruct his agents, or his surveyors, to investigate such details as the buyer desires validated. This vessel is offered subject to prior sale, price change, or withdrawal without notice.

---

## Exclusions

Owner's personal belongings.

---

## Disclaimer

The Company offers the details of this vessel or yacht in good faith but cannot guarantee or warrant the accuracy of this information nor warrant the condition of the vessel. A buyer should instruct his representatives, agents, or his surveyors, to investigate such details as the buyer desires validated. This vessel or yacht is offered subject to prior sale, price change, or withdrawal without notice.

# PHOTOS

**2\_\_1988 53ft Defever 53 POC HIS AND  
HERS**



**3\_\_1988 53ft Defever 53 POC HIS AND  
HERS**



**4\_\_1988 53ft Defever 53 POC HIS AND  
HERS**



**5\_\_1988 53ft Defever 53 POC HIS AND  
HERS**



**6\_\_1988 53ft Defever 53 POC HIS AND HERS**



**7\_\_1988 53ft Defever 53 POC HIS AND HERS**



**8\_\_1988 53ft Defever 53 POC HIS AND HERS**



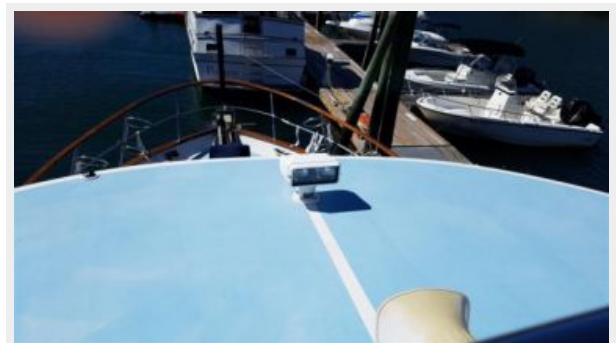
**9\_\_1988 53ft Defever 53 POC HIS AND HERS**



**10\_\_1988 53ft Defever 53 POC HIS AND HERS**



**11\_\_1988 53ft Defever 53 POC HIS AND HERS**





**12\_\_1988 53ft Defever 53 POC HIS AND  
HERS**



**13\_\_1988 53ft Defever 53 POC HIS AND  
HERS**



**14\_\_1988 53ft Defever 53 POC HIS AND  
HERS**



**15\_\_1988 53ft Defever 53 POC HIS AND  
HERS**



**16\_\_1988 53ft Defever 53 POC HIS AND  
HERS**



**17\_\_1988 53ft Defever 53 POC HIS AND  
HERS**



**18\_\_1988 53ft Defever 53 POC HIS AND  
HERS****19\_\_1988 53ft Defever 53 POC HIS AND  
HERS****20\_\_1988 53ft Defever 53 POC HIS AND  
HERS****21\_\_1988 53ft Defever 53 POC HIS AND  
HERS****22\_\_1988 53ft Defever 53 POC HIS AND  
HERS****23\_\_1988 53ft Defever 53 POC HIS AND  
HERS**



24\_\_1988 53ft Defever 53 POC HIS AND  
HERS



25\_\_1988 53ft Defever 53 POC HIS AND  
HERS



26\_\_1988 53ft Defever 53 POC HIS AND  
HERS



27\_\_1988 53ft Defever 53 POC HIS AND  
HERS



**28\_\_1988 53ft Defever 53 POC HIS AND  
HERS****29\_\_1988 53ft Defever 53 POC HIS AND  
HERS****30\_\_1988 53ft Defever 53 POC HIS AND  
HERS****31\_\_1988 53ft Defever 53 POC HIS AND  
HERS****32\_\_1988 53ft Defever 53 POC HIS AND  
HERS****33\_\_1988 53ft Defever 53 POC HIS AND  
HERS**

**34\_\_1988 53ft Defever 53 POC HIS AND  
HERS**



**35\_\_1988 53ft Defever 53 POC HIS AND  
HERS**



**36\_\_1988 53ft Defever 53 POC HIS AND  
HERS**



**37\_\_1988 53ft Defever 53 POC HIS AND  
HERS**



**38\_\_1988 53ft Defever 53 POC HIS AND  
HERS**

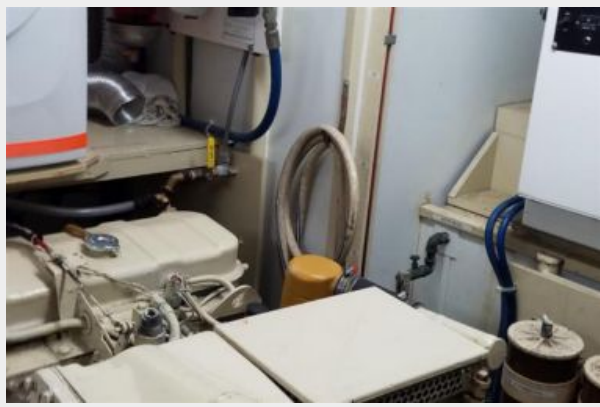


**39\_\_1988 53ft Defever 53 POC HIS AND  
HERS**





**40\_\_1988 53ft Defever 53 POC HIS AND  
HERS**



**41\_\_1988 53ft Defever 53 POC HIS AND  
HERS**



**42\_\_1988 53ft Defever 53 POC HIS AND HERS**



# CONTACTS

---

Andrey Shestakov, leading yacht broker of the sales department of Shestakov Yacht Sales Inc. Shestakov Yacht Sales Inc., the official representative of the Miami/Fort Lauderdale FL headquarters.

## Contact details

---

Email: **andrey@shestakovyachtsales.com**

Web: [shestakovyachtsales.com/en/](http://shestakovyachtsales.com/en/)

## Telephones

---

USA: **+1(954)274-4435**

## Office hours

---

Monday – Saturday: **9:00 - 21:00 EDT**

Sunday: **closed**

## Address

---



Harbour Towne Marina, 850 NE 3rd St,  
STE 213, Dania, FL 33004