

## PRINCESS V65 — PRINCESS YACHTS



**Builder:** PRINCESS YACHTS

**Year Built:** 2007

**Model:** SHELBY

**Price:** PRICE ON APPLICATION

**Location:** France

**LOA:** 76' 7" (23.33m)

**Beam:** 16' 9" (5.08m)

**Min Draft:** 4' 4" (1.30m)

**Max Draft:** 0' 0" (0.00m)

**Cruise Speed:** 25 Kts. (29 MPH)

**Max Speed:** 39 Kts. (45 MPH)

Our experienced yacht broker, Andrey Shestakov, will help you choose and buy a yacht that best suits your needs **Princess V65 — PRINCESS YACHTS** from our catalogue. Presently, at Shestakov Yacht Sales Inc., we have a wide variety of yachts available on our sale's list. We also work in close contact with all the big yacht manufacturers from all over the world.

If you would like to buy a yacht **Princess V65 — PRINCESS YACHTS** or would like help answering any questions concerning purchasing, selling or chartering a yacht, please call **+1(954)274-4435**

# TABLE OF CONTENTS

TABLE OF CONTENTS	2
SPECIFICATIONS	4
Overview	4
Basic Information	4
Dimensions	4
Speed, Capacities and Weight	5
Accommodations	5
Hull and Deck Information	5
Engine Information	5
DETAILED INFORMATION	6
General description	6
Accommodation	6
Deck	6
Deck saloon	8
Galley	8
Engine room	9
Helm position	10
Miscellaneous	10
Exclusions	11
Disclaimer	11
PHOTOS	12
Aftdeck	12
Aftdeck2	12
Aftdeck3	12
Foredeck	12
Saloon	12
Saloon2	12
Saloon (2)	13

---

Saloon3	13
Master2	13
Master	13
Master3	14
Master4	14
Master Bathroom	14
VIP	14
VIP2	15
VIP3	15
Twin	15
Stern	15
V65_Layout	16
CONTACTS	17
Contact details	17
Telephones	17
Office hours	17
Address	17

---

# SPECIFICATIONS

---

## Overview

---

This first owner from new Princess V65 Open Motor Yacht achieves the perfect balance of sleek looks, superior seakeeping, speed and a cockpit that inspires relaxation. Great for families, the deck saloon pushes the boundaries of space and style, featuring two generous seating areas as well as incorporating a cocktail unit and entertainment centre. With an electrically operated sliding hard top sunroof and full air-conditioning throughout the boat, this 23m Motor Yacht is the ideal setting for elegant entertaining with friends or family. The triple sliding glass doors aft of the deck saloon lead to the teak-laid cockpit, which includes a wet bar and spacious seating around a large folding teak table as well as a double sunbed. The enormous full-beam owner's stateroom amidships features vertical port lights, allowing in plenty of natural light to enhance the feeling of space. A further VIP stateroom forward and a twin berth cabin to port offer additional spacious accommodation.

## Basic Information

---

**Category:** SHELBY

**Sub Category:** Motor Yacht

**Model Year:** 2007

**Year Built:** 2007

**Country:** France

**Vessel Top:** Electronic Sunroof

## Dimensions

---

**LOA:** 76' 7" (23.33m)

**LWL:** 65' 4" (19.90m)

**Beam:** 16' 9" (5.08m)

**Min Draft:** 4' 4" (1.30m)

**Max Draft:** 0' 0" (0.00m)

---

## Speed, Capacities and Weight

---

**Cruise Speed:** 25 Kts. (29 MPH)

**Max Speed:** 39 Kts. (45 MPH)

**Displacement:** 73634395.508 Pounds

**Gross Tonnage:** 33 Pounds

**Water Capacity:** 179.63699536 Gallons

**Holding Tank:** 66.043013 Gallons

**Fuel Capacity:** 1003.8537976 Gallons

**Fuel Consumption:** 66.043013 Gallons

---

## Accommodations

---

**Total Cabins:** 3

**Total Berths:** 6

**Sleeps:** 6

**Total Heads:** 3

**Crew Sleeps:** 2

**Crew Heads:** 1

---

## Hull and Deck Information

---

**Hull Material:** GRP

**Deck Material:** GRP

**Hull Configuration:** Deep Vee

**Hull Color:** White

**Hull Finish:** Aluminum

---

## Engine Information

---

**Engines:** 2

**Manufacturer:** MTU

**Model:** MTU 10V2000M93

**Engine Type:** Inboard

**Fuel Type:** Diesel

---

# DETAILED INFORMATION

---

## General description

---

This first owner, sparkling high-spec and low hours Princess V65 Open Motor Yacht achieves the perfect balance of sleek looks, superior seakeeping, speed and a cockpit that inspires relaxation. Great for families, the deck saloon pushes the boundaries of space and style, featuring two generous seating areas as well as incorporating a cocktail unit and entertainment centre. With an electrically operated sliding hard top sunroof and full air-conditioning throughout the boat, this 23m Motor Yacht is the ideal setting for elegant entertaining with friends or family. The triple sliding glass doors aft of the deck saloon lead to the teak-laid cockpit, which includes a wet bar and spacious seating around a large folding teak table as well as a double sunbed. The enormous full-beam owner's stateroom amidships features vertical port lights, allowing in plenty of natural light to enhance the feeling of space. A further VIP stateroom forward and a twin berth cabin to port offer additional spacious accommodation.

## Accommodation

---

The deck saloon pushes the boundaries of space and style, featuring two generous seating areas as well as incorporating a cocktail unit and entertainment centre. With an electrically operated sliding hard top sunroof and full air-conditioning throughout the boat, this is the ideal setting for elegant entertaining. The triple sliding glass doors aft of the deck saloon lead to the teak-laid cockpit, which includes a wetbar and spacious seating around a large folding teak table as well as a double sunbed. Further aft there is a large lazarette and garage with storage for a tender or wetbike. Below, finished to an impeccable superyacht style, there is a fully equipped galley to starboard with teak-laid flooring. The enormous full-beam owner's stateroom amidships features vertical portlights, allowing in plenty of natural light to enhance the feeling of space. A further VIP stateroom forward and a twin berth cabin to port offer additional spacious accommodation and there is the option to have a further occasional guest or crew cabin aft as required.

## Deck

---

U-shaped seating/dining area to starboard with folding table and sunbed

Cockpit lighting

Cockpit hood and tonneau cover

Stainless steel grabrails

Electro-hydraulic telescopic passerelle (2.5m) with remote control

---

Cockpit wet bar with sink, ice maker, refrigerator drawer, electric barbecue and storage

Storage garage for dinghy or wetbike with electro-hydraulic door & winch

Life raft storage

Access hatch to large lazarette area with fender storage racks

Access hatch to optional crew cabin

220/240v shore support inlet

Loudspeakers linked to saloon

Bose surround sound system

Cockpit gate leading to aft deck and to integral bathing platform with hot and cold transom shower, foldaway swimming ladder and teak decking

Teak-laid cockpit and transom platform

Reversible electric anchor winch with foredeck and helm position controls

Self-stowing (40kg) Delta anchor with 60m of chain

Stemhead roller with automatic anchor launch and retrieve

Bow rope storage locker and anchor wash facility

Stainless steel bow, stern and spring cleats (8)

Stainless steel pulpit and guardrails

Two electric sternline winches

Stainless steel coachroof handrails

Forecabin hatch

PVC rubbing band with stainless steel insert

Full set of IMCO navigation lights

Riding light

Remote control searchlight

Twin electric horns

U-shaped seating/dining area to

Fuel and water fillers

---

## Deck saloon

---

Full air conditioning throughout

U-shaped sofa with dining table

Two seater sofa opposite

Cocktail unit forward incorporating refrigerator, bottle and glass storage

Entertainment unit aft incorporating Bose DVD/radio with surround-sound system

32 inch LCD TV with electric raise/lower mechanism

Forward dinette seating area with coffee table

Portside electric opening window

Venetian blinds, curtains or sunscreens (mesh type) to all windows and doors

Overhead downlighters

Electric hardtop sliding roof

Stainless steel framed triple sliding saloon doors

All cabins feature opening and/or fixed portholes, 240v power points and air conditioning

All bathrooms feature opening portholes, fresh water Vacuflush toilets with holding tanks and 240v shaver points

---

## Galley

---

Avonite or similar worktop

Twin-bowl stainless steel sink with Monobloc mixer tap

4-zone ceramic hob

Extractor fan

Combination microwave/conventional oven with grill

8 place dishwasher



Full height refrigerator and freezer

Storage cupboards, drawers and lockers

Washer/dryer and storage area below aft stairway

AC/DC main switch panel opposite Galley

---

## Engine room

---

Twin MTU 10V2000M93 with 760 hours logged

5-bladed propellers in nickel aluminium bronze

Bow and stern thruster

Engine room lighting

Power-assisted hydraulic steering

Trim tabs with indicators

Electronic engine controls

Freshwater supply point in engine room

Engine room extractor fans with electronic time delay

4 x heavy duty batteries for engine starting (2019)

6 x heavy duty auxiliary batteries

Engine alternators charge via split charging system to isolate engine start batteries from auxiliaries

100 amp 24v float battery charger for auxiliary batteries, 5-amp

24v float battery charger for engine start batteries

Remote battery master switches with control switch at main panel

Circuit breakers on all circuits

22.5kW diesel generator with own starting battery and specially silenced exhaust

Shore support inlet

Generator/shore support changeover system

---

## Helm position

---

Twin helm seats with adjustment

Helmsman's door to side deck

Electric opening window portside

Instrument console with full engine instrumentation, fuel gauges and electronic engine and gear shift controls

Rudder position indicator

Power-assisted hydraulic steering

Bow thruster control

Anchor winch remote control

Trim tab controls with indicators

Autopilot

VHF with DSC R/T

Colour radar and GPS/Chart plotter

Speed and distance log

Echo sounder with alarm

Remote control searchlight

High-speed compass

Horn button

Chart area with storage

Windscreen wipers with freshwater wash

Bilge pump controls with visual pump running indicators

Fuel contamination alarm system

---

## Miscellaneous

---

New upholstery (2019)

All pumps and seacocks replaced in 2019

## **Exclusions**

---

Owner's personal belongings.

## **Disclaimer**

---

The Company offers the details of this vessel or yacht in good faith but cannot guarantee or warrant the accuracy of this information nor warrant the condition of the vessel. A buyer should instruct his representatives, agents, or his surveyors, to investigate such details as the buyer desires validated. This vessel or yacht is offered subject to prior sale, price change, or withdrawal without notice.

# PHOTOS

**Aftdeck**



**Aftdeck2**



**Aftdeck3**



**Foredeck**



**Saloon**



**Saloon2**



**Saloon3**



**Saloon (2)**



**Master**



**Master2**



**Master3**



**Master4**



**Master Bathroom**



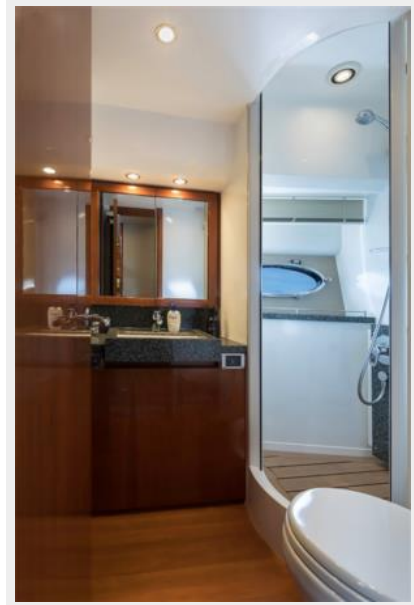
**VIP**



VIP2



VIP3



Twin



Stern



## V65\_Layout





# CONTACTS

---

Andrey Shestakov, leading yacht broker of the sales department of Shestakov Yacht Sales Inc. Shestakov Yacht Sales Inc., the official representative of the Miami/Fort Lauderdale FL headquarters.

## Contact details

---

Email: [andrey@shestakovyachtsales.com](mailto:andrey@shestakovyachtsales.com)

Web: [shestakovyachtsales.com/en/](http://shestakovyachtsales.com/en/)

## Telephones

---

USA: +1(954)274-4435

## Office hours

---

Monday – Saturday: **9:00 - 21:00** EDT

Sunday: **closed**

## Address

---



Harbour Towne Marina, 850 NE 3rd St,  
STE 213, Dania, FL 33004