

## SAPPHIRE — KNIGHT & CARVER



**Судостроитель:** KNIGHT & CARVER

**Год постройки:** 2002

**Модель:** Моторная яхта

**Цена:** ЦЕНА ЯХТЫ ПО ЗАПРОСУ

**Местонахождение:** United States

**Длина общая:** 70' 0" (21.34m)

**Ширина:** 20' 7" (6.27m)

**Макс. осадка:** 5' 6" (1.68m)

**Крейс. скорость:** 21 Kts. (24 MPH)

**Макс. скорость:** 25 Kts. (29 MPH)

Купить **SAPPHIRE — KNIGHT & CARVER** а также выбрать подходящую вам яхту из нашего каталога яхт вам поможет опытный яхтенный брокер Андрей Шестаков. На сегодняшний день компания **Shestakov Yacht Sales Inc.** имеет большое количество яхт в собственном списке продаж, а также тесно сотрудничает со всеми крупными яхтенными производителями по всему миру.

Для того чтобы купить яхту **SAPPHIRE — KNIGHT & CARVER** а также проконсультироваться по любому вопросу связанному с покупкой, продажей, чартером яхт позвоните по телефону **+7(918)465-66-44**.

# ОГЛАВЛЕНИЕ

ОГЛАВЛЕНИЕ	2
ХАРАКТЕРИСТИКИ	5
Обзор	5
Основная информация	5
Размеры	5
Скорость, вместимость и масса	5
Размещение	6
Корпус и палуба	6
Информация о двигателе	6
ПОДРОБНОЕ ОПИСАНИЕ	7
Overview	7
Salon	8
Galley	8
Dinette	9
Master Stateroom	9
VIP Stateroom	9
Port Guest Stateroom	10
Crew Quarters	10
Electronics	11
Deck Equipment	11
Engine Room	12
Laundry Room	13
Broker Comments	14
Exclusions	14
Исключения	14
Отказ от ответственности	14
ФОТОГРАФИИ	15
Main Salon	15

Main Salon	15
Main Salon	15
Galley	15
Galley	15
Pilothouse	15
Pilothouse	16
Pilothouse	16
Master Stateroom	16
Master Stateroom	16
Master Stateroom	16
Master Bath	16
VIP Stateroom	17
VIP Stateroom	17
VIP Guest Bath	17
Guest Stateroom	17
Guest Stateroom	17
Guest Bath	17
Flybridge	18
Flybridge	18
Upper Helm	18
Upper Helm	18
Flybridge	18
Sundeck	18
Side Deck	19
Sundeck	19
Foredeck	19
Aft Deck	19
Aft Deck	19
Aft Deck	19

---

Swim Platform	20
Crew Quarters	20
Crew Quarters	20
Crew Bath	20
Engine Room	20
Engine Room	20
Engine Room	21
Starboard Bow Profile	21
Bow	21
Aerial Running	21
Aerial Running	21
Port Stern Running	21
Stern	22
Starboard Bow Profile	22
Layout	22
<b>КОНТАКТЫ</b>	<b>23</b>
Контактная информация	23
Телефоны	23
Время работы	23
Адрес	23

# ХАРАКТЕРИСТИКИ

## Обзор

Rare opportunity to own one of the highest quality west coast custom motor yachts built at the highly respected Knight and Carver Yacht Center in San Diego. Sapphire was designed by esteemed yacht designer Tom Fexas who was arguably the most influential modern yacht designer of the 20th century. Sapphire is built to a quality standard rarely seen in a vessel its size, and its current owner has put the vessel through a comprehensive refit. The refit included a complete zero hour rebuild of the vessel's Cat 3412E-1400hp engines built to a commercial standard which includes jacket cooling, deep sump oil pits, and side inspection panels to allow for cost-effective engine maintenance. The almost 21' beam and open floor plan give Sapphire the feel of an 80' yacht. It's 1,200nm range, 25knt top-end speed, and practical systems are a highly desired combination. The quality and beauty of this vessel must be seen to be understood and appreciated.

## Основная информация

**Тип судна:** Моторная яхта

**Модельный год:** 2002

**Год постройки:** 2002

**Год обновления:** 2020

**Страна:** United States

## Размеры

**Длина общая:** 70' 0" (21.34m)

**Ширина:** 20' 7" (6.27m)

**Макс. осадка:** 5' 6" (1.68m)

## Скорость, вместимость и масса

**Крейс. скорость:** 21 Kts. (24 MPH)

**Дальность на крейсерской скорости:**  
1200

**Макс. скорость:** 25 Kts. (29 MPH)

**Чистый вес:** 125 Pounds

**Вместимость воды:** 500 Gallons

**Объем топливного бака:** 2400 Gallons

## Размещение

---

Всего кают: 3

Спальные места: 6

Всего ком. состава: 4

Каюты экипажа: 1

Спальных мест экипажа: 2

## Корпус и палуба

---

Материал корпуса: Fiberglass

Дизайнер экстерьера: Tom Fexas

## Информация о двигателе

---

Двигатели: 2

Производитель: Caterpillar

Модель: 3412-E

Тип двигателя: Inboard

Тип топлива: Diesel

---

# ПОДРОБНОЕ ОПИСАНИЕ

---

## Overview

---

SAPPHIRES' condition is excellent. A 2020 bow to stern refit has brought her into class with any late model vessel of this size. She is beautifully crafted in the USA, three-staterooms with ensuite heads, plus large private crew accommodations aft.

Most notably, the yacht has Zero Hour CAT's with the 2-year CAT Platinum Extended Warranty Program with additional years available.

SAPPHIRE is a custom motor yacht built by the Knight and Carver Yacht Center in San Diego, CA. Knight and Carver has a tremendous following and has long been appreciated for their exemplary craftsmanship of true ocean-going custom yachts. The vessel was designed by Tom Fexas with the build directed by Art Bollinger. SAPPHIRE is a truly custom, one-of-a-kind, motor yacht with impeccable quality throughout and an owner who has cared for the boat with an open checkbook.

SAPPHIRE is truly a special boat with the safety features of high bulwarks walk around side-decks, super stability, range, speed, and recent system upgrades. The yacht is a great family cruiser with the assistance of a captain or as an owner-operator.

## Key Features

- Cat 3412E-1400hp engines built to a commercial standard which includes jacket cooling, deep sump oil pits, and side inspection panels to allow for cost-effective engine maintenance, plus a full zero hour rebuild summer of 2020 (Platinum Warranty on Caterpillar 3412E with 50 hours)
- 2,400-gallon fuel capacity providing range more than 1200NM
- 20'7" Beam providing interior volume equal to 80' yachts
- Naiad Stabilizers
- Glass bridge navigation electronics with Nobeltec navigation and integrated Maretron system
- Updated AV system with full HD Directv receivers coupled with the KVH HD7
- Waste treatment plant
- 3 x Guest staterooms + crew cabin

- Watermaker
- 2 x Generators
- Underwater lights
- Walk-around side-decks
- Loads of storage for extended cruising
- Notably, a stable vessel to help those prone to seasickness

---

## Salon

---

The main deck is accessed through one of three Freeman weathertight sliding doors. The carpentry is a stunning cherry interior with a satin finish. The saloon has an open galley family-friendly layout, and all the finest amenities possible.

- Large L-shaped settee with custom dust covers, with enough storage underneath for dry provisions and spare five-blade propellers
- Bar with wine cooler, liquor, and glass storage drawers
- Pass through galley
- Samsung HD smart TV on a lift behind pocket doors
- Yamaha surround sound stereo receiver
- Boston Acoustics speakers in salon and in the pilothouse overhead
- Sony DVD player
- HD Satellite television receivers (Direct TV)
- Fabrica carpeting with Sound Down carpet pad and carpet runners
- Shades and valance with concealed indirect lighting above
- Two 16,000 BTU Cruisair air conditioners

---

## Galley

---

- U-shaped galley with granite counters and backsplash
- Stainless-steel sink with In-Sink-Erator
- Filtered drinking water tap
- Wolf glass-top 4-burner electric induction stove
- Exhaust fan vented to exterior
- Viking convection/microwave oven
- Sub-zero refrigerator with two freezer drawers and icemaker
- Sub-zero 2-drawer freezer unit under the buffet
- Miele dishwasher
- Kitchen aid trash compactor
- Generous storage in cabinets and drawers
- 12,000 BTU Cruisair air conditioner
- Spice drawer



---

## Dinette

---

- U-shaped dinette for six adults with storage underneath (ability to rotate two helm chairs for additional dining)
- Beautiful cherry table
- Teak decking throughout galley and dinette/pilothouse with custom-fit carpet runner
- Three large chart drawers and two file drawers beneath the dinette

---

## Master Stateroom

---

Owner/guest accommodations accessed down an illuminated companionway. The bed Mattresses are custom pillowtop of the highest quality with large drawer storage underneath.

- Large berth with drawer storage underneath
- Two cherry nightstands
- 40" Samsung HD smart TV with HD satellite receiver
- Desk with chair and drawer storage below and cabinet storage behind
- Sitting/reading chair
- Hanging locker to starboard
- Walk-in closet to port with access/exit to the engine room
- Bank of drawers to port with unique laundry bins underneath
- Ensuite head with pocket door entry
- Large shower with seat, glass door, and portlight
- Granite vanity top with Kohler sinks and satin nickel fixtures
- Mirrored overhead
- Separate toilet compartment with pocket door and Headhunter Royal Flush head
- Two Cruisair 12,000 BTU air conditioning units port and starboard
- Four portlights with shades

---

## VIP Stateroom

---

- Spacious stateroom located all the way forward with queen size berth, berth lifts electronically to reveal a large storage locker storage beneath
- Plenty of storage in drawers, two hanging lockers, and cabinets
- Ensuite head with large shower with glass door
- Sink, counter, and generous storage in cabinets behind mirrors
- Mirrored overhead
- Cruisair 12,000 BTU air conditioner
- LED lighting, accent lighting

- Deck hatch to the foredeck with screen and sunshade
- 40" Samsung HD smart TV with HD satellite receiver

## Port Guest Stateroom

---

- Twin single berths side by side with drawer storage underneath
- Cabinets and bookshelf on the outboard side
- Nightstand in between berths with drawers underneath
- Hanging locker
- Ensuite head with shower and glass door
- Headhunter Royal Flush head
- Sink, counter, and storage in cabinets behind mirrors
- Mirrored overhead
- Cruisair 12,000 BTU air conditioner
- 24" Samsung HD smart TV with HD satellite receiver

## Crew Quarters

---

The crew quarters on SAPPHIRE are well-appointed with good use of space and generous storage for extended cruises. Exterior entrance through the transom. It offers direct access to the exterior and the machinery space.

- Queen-size berth with additional bunk
- Hanging locker
- Desk and stool
- Microwave
- Refrigerator
- 12,000 BTU Cruisair air conditioner
- 24" Samsung HD Smart TV with HD satellite receiver
- VHF radio
- Spacious separate head and shower
- Large hatch over the shower for underway access
- Headhunter Royal Flush toilet
- Pocket door for head
- Foul weather gear locker
- Drawers and cabinet storage
- LED wall sconces
- LED lighting and dimmers
- Fresh headliners, wallpaper, and flooring

---

## Electronics

---

The electronics suite offers all the information you desire at a moment's glance. Whether you are enjoying the excellent visibility from either the upper or lower helm station, they are nearly identical in both equipment and layout. The powerful solid-state, custom-built Super Logics CPU services both the upper and lower helm. The lower helm is equipped with three 27" glass bridge screens. The upper helm is equipped with two 24" screens plus one 17" marine screen. All screens offer tremendous flexibility in customizing your preferences including engine room surveillance, dual charting, and complete vessel monitoring.

- Complete Maretron monitoring system which monitors the engines, tanks levels and ship's electrical system including depth sounder, speed sensor, weather station, and GPS
- Nobeltec navigation system
- Furuno Navnet radar
- Standard Horizon VHF
- Icom RT-710 SSB
- Wireless keyboard
- Custom ship systems and alarm monitor
- Ritchie power damp illuminated compass
- Simrad AP60 autopilot
- Fog Mate automatic fog signal
- Seatel Wavecall satellite phone system with SATspeed compression software for email access
- KVH 6 system
- CPU runs Nema 2000
- Naiad multi sea II stabilization system with fins rebuilt in 2019
- ACR searchlight

---

## Deck Equipment

---

SAPPHIRE has a traditional clean look, nicely designed to provide deck spaces that are free of cleats and other obstructions. Line handling is a breeze with her full walk-around side decks. She has an isinglass enclosure on the flybridge that makes enjoying the top deck possible in almost any weather.

- Bruce 110lb anchor on a custom bow roller
- 300 feet 7/16" G4 chain
- Bow staff
- Maxwell 1500 windlass with remote and helm controls
- Spare Danforth anchor

- Full bulwarks main deck with custom hawse pipes
- Opening bulwark doors for boarding port and starboard
- Mooring bitts for bowlines
- Generous line storage port and starboard with line hooks and lots of room for fenders
- Large trunk cabin
- Custom storage for Marquipt tide ride and boarding ladder
- Generous storage for cleaning supplies
- Built-in wet spot plus water softener
- Innovative bow seat sun pad with new cushions with weather cover and watertight storage beneath
- Full privacy/sunscreens for windshields and side windows
- Freeman pilothouse doors port and starboard
- Freeman sliding aft salon door
- Six opening sliding windows
- Aft deck ladder to flybridge with teak steps
- Deck lights
- Nautical structures EZ 1500 davit with remote
- 8-person life raft in a hard case
- Two Stidd flybridge chairs and one Stidd loveseat
- Storage lockers on the flybridge with sink
- Staple rails on the swim platform
- Large custom swim ladder
- ACR searchlight with 2 controls
- Buell dual trumpet horns with expansion tank
- Hella stainless navigation lights
- Split U-shaped seating on the flybridge
- Aft deck seating with cushions
- 7' Mahogany high gloss table and covers on aft deck (accommodates 10 people)
- Large aft deck storage/shore power compartment (below deck)
- 100' of 100 amp shore power cord on Glendinning reel
- Scuba tank storage locker
- Fold-down TV from the hardtop on the flybridge

---

## Engine Room

---

The machinery space on SAPPHIRE is guaranteed to impress even the most discerning yachtsman. In the summer of 2020, Sapphire did a major mechanical refit in the engine room, the main engines were removed from the boat and were remanufactured by Caterpillar to a zero-hour specification. During this process, they took the opportunity to update and detail the surrounding spaces, the attention to detail and quality of work performed is noticeable. The Caterpillar 3412E engines are truly sought after, they have the oversized deep oil pans, field serviceable cylinder sleeves and the jacket cooled aftercoolers. Easy access to all equipment for ease of serviceability makes it a pleasure to keep this vessel in tip-top shape.

- Zero hour rebuild with Platinum Extended Warranty Program in effect on Caterpillar 3412E 1400hp main engines deep sump oil pans and full engine room gauges.
- Consumer version electronic technician
- Underwater exhaust system with bypass
- ZF BW190 2.03 to 1 gears ratio with trolling valves
- Twin disc EC200 electronic controls pilothouse and flybridge with wired remote
- 3 1/2" Aquamet 22 propeller shafts
- Strong Seal shaft seals
- Westerbeke 32kW generator and Northern Lights 25kW generator sets in sound shields and water separator silent exhaust system
- Naiad 302 stabilizers with Multi Sea 2000 control
- New Wesmar twin-blade electric bow thruster
- Sea recovery 1500 GPD watermaker
- Waste treatment system
- Fuel transfer system with Oberdorfer 240V/1HP pump 20+ gal per minute
- Racor 1000 fuel filters
- Oberdorfer 240V/1HP oil change pump with quick disconnect hydraulic fittings on all equipment
- Two Sea-fire FM 200 bottles
- Dry chemical and (2) CO2 handheld fire extinguishers
- Headhunter Mach 5 freshwater pump
- Charles Industries ISO-boost transformer
- Trace 2500-watt inverter
- Pro Mariner battery chargers (recently replaced)
- Delta "T" ventilation system with replaced fans
- Surveillance cameras
- A/C switch panel
- Toolbox
- Air compressor
- Hynautic power steering with two pumps and two CYL
- Watertight freeman door with viewing port to crew quarters
- Watertight freeman door to the master walk-in closet
- LED light fixtures (recently replaced)
- Spare Veem Star C5 blade props
- Spare engine and generator parts
- Parker Racor fuel polisher

---

## Laundry Room

---

- Miele stackable washer and dryer
- Generous shelf storage

- Folding door with light switch
- Linen storage in concealed drawers across the hall
- Storage below companionway stairs

---

## Broker Comments

---

This is a rare opportunity to own one of the highest quality west coast custom motor yachts built at the highly respected Knight and Carver Yacht Center in San Diego. Sapphire was designed by esteemed yacht designer Tom Fexas who was arguably the most influential modern yacht designer of the 20th century. Sapphire is built to a quality standard rarely seen in a vessel its size, and its current owner has put the vessel through a comprehensive refit. The refit included a complete zero hour rebuild of the vessel's Cat 3412E-1400hp engines built to a commercial standard which includes jacket cooling, deep sump oil pits, and side inspection panels to allow for cost-effective engine maintenance. The almost 21' beam and open floor plan give Sapphire the feel of an 80' yacht. The 1,200nm range, 25knt top-end speed, and practical systems are a highly desired combination.

---

## Exclusions

---

- Paintings
- Personal effects
- Some personal culinary, china, and crystal items
- Fishing gear and Captain's tools

---

## Исключения

---

При продаже яхты исключаются личные вещи владельца.

---

## Отказ от ответственности

---

Компания предоставляет описание судна или яхты добросовестно, но не может гарантировать точность этой информации, а также не ручается за техническое состояние. Покупатель должен проинструктировать своих агентов или оценщиков исследовать представленную информацию более подробно, по собственному желанию. Продажа судна или яхты, изменение цены или снятие с продажи будет происходить без предварительного уведомления.

# ФОТОГРАФИИ

**Main Salon**



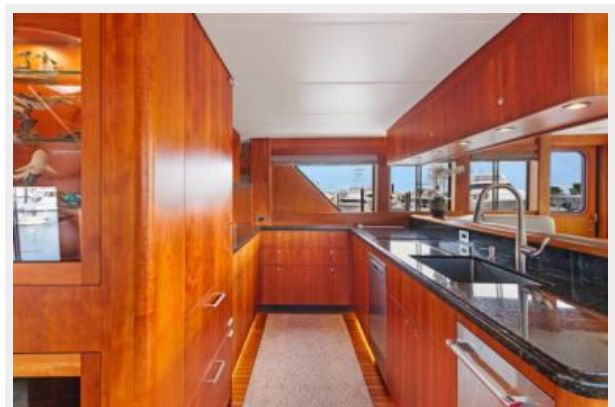
**Main Salon**



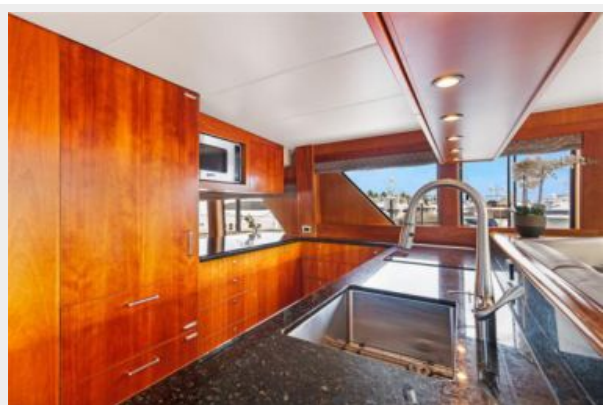
**Main Salon**



**Galley**



**Galley**



**Pilothouse**



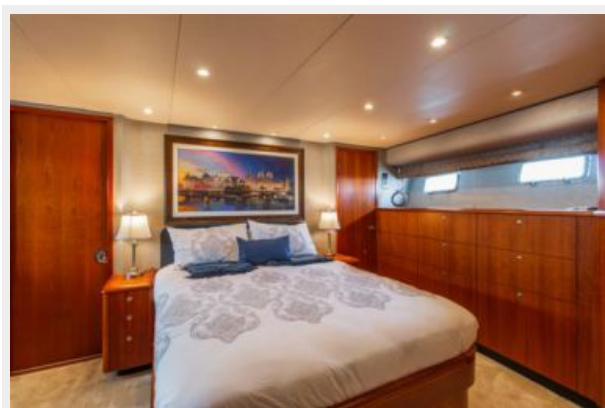
**Pilothouse**



**Pilothouse**



**Master Stateroom**



**Master Stateroom**



**Master Stateroom**

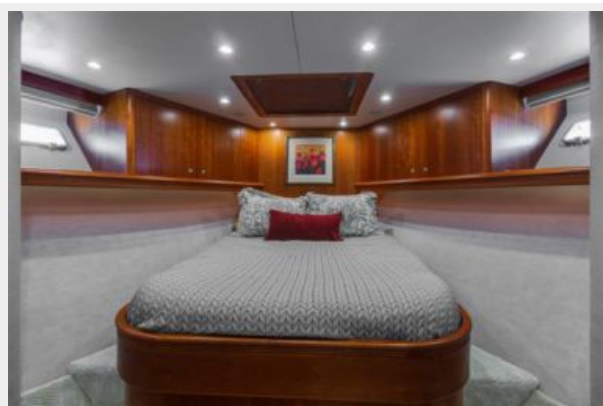


**Master Bath**

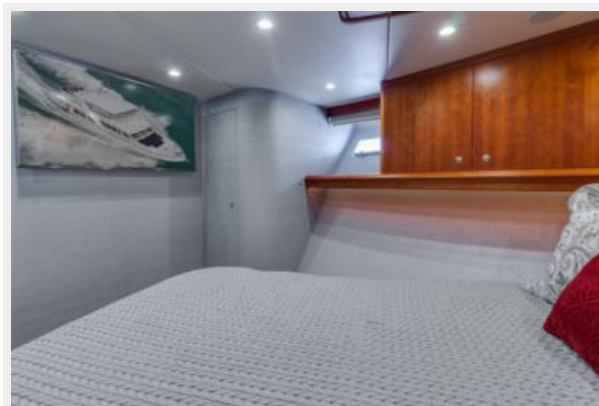




**VIP Stateroom**



**VIP Stateroom**



**VIP Guest Bath**



**Guest Stateroom**



**Guest Stateroom**



**Guest Bath**



**Flybridge**



**Flybridge**



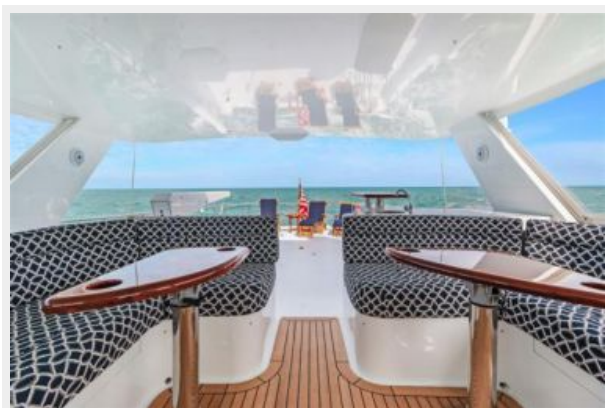
**Upper Helm**



**Upper Helm**



**Flybridge**



**Sundeck**



**Sundeck**



**Side Deck**



**Foredeck**



**Aft Deck**



**Aft Deck**



**Aft Deck**



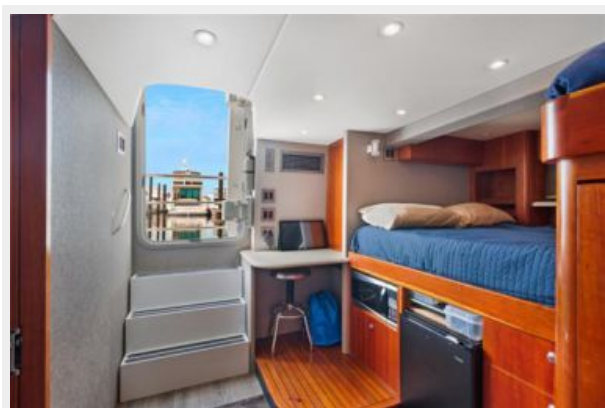
**Swim Platform**



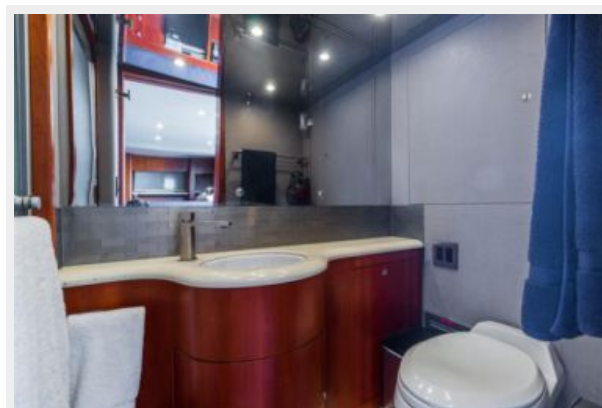
**Crew Quarters**



**Crew Quarters**



**Crew Bath**



**Engine Room**



**Engine Room**



**Engine Room**



**Starboard Bow Profile**



**Bow**



**Aerial Running**



**Aerial Running**



**Port Stern Running**



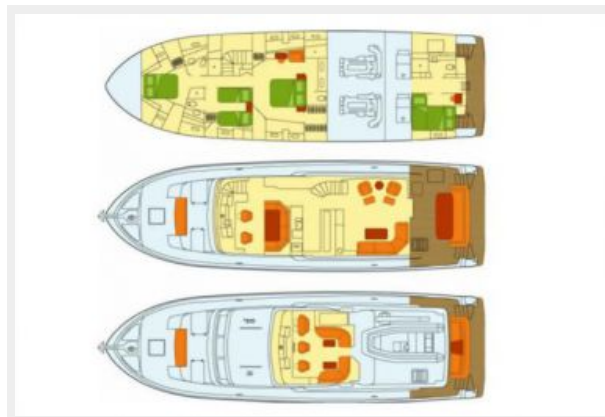
**Stern**



**Starboard Bow Profile**



**Layout**



# КОНТАКТЫ

---

Андрей Шестаков (Andrey Shestakov) – ведущий яхтенный брокер отдела продаж яхт и судов компании Shestakov Yacht Sales Inc. Официальный представитель Shestakov Yacht Sales Inc. для русскоговорящих клиентов в центральном офисе компании в Майами/Форт Лодердейл/Флорида/США.

## Контактная информация

---

Email: [andrey@shestakovyachtsales.com](mailto:andrey@shestakovyachtsales.com)

Web: [shestakovyachtsales.com](http://shestakovyachtsales.com)

## Телефоны

---

Краснодарский край: **+7(918)465-66-44**

США, Майами, Флорида: **+1(954)274-4435**

## Время работы

---

Понедельник – Суббота: **9:00 - 21:00**  
EDT

Воскресенье: **Закрито**

## Адрес

---



Harbour Towne Marina, 850 NE 3rd St,  
STE 213, Dania, FL 33004