

MARINER — FISHER



Судостроитель: FISHER

Год постройки: 1976

Модель: Крейсерский кеч

Цена: **ЦЕНА ЯХТЫ ПО ЗАПРОСУ**

Местонахождение: United States

Длина общая: 37' 0" (11.28m)

Ширина: 12' 0" (3.66m)

Макс. осадка: 5' 3" (1.60m)

Крейс. скорость: 5 Kts. (6 MPH)

Макс. скорость: 7 Kts. (8 MPH)

Купить **Mariner — FISHER** а также выбрать подходящую вам яхту из нашего каталога яхт вам поможет опытный яхтенный брокер Андрей Шестаков. На сегодняшний день компания **Shestakov Yacht Sales Inc.** имеет большое количество яхт в собственном списке продаж, а также тесно сотрудничает со всеми крупными яхтенными производителями по всему миру.

Для того чтобы купить яхту **Mariner — FISHER** а также проконсультироваться по любому вопросу связанному с покупкой, продажей, чартером яхт позвоните по телефону **+7(918)465-66-44**.

ОГЛАВЛЕНИЕ

ОГЛАВЛЕНИЕ	2
ХАРАКТЕРИСТИКИ	5
Обзор	5
Основная информация	5
Размеры	5
Скорость, вместимость и масса	5
Размещение	5
Корпус и палуба	6
Информация о двигателе	6
ПОДРОБНОЕ ОПИСАНИЕ	7
MAIN DESCRIPTION	7
WALKTHROUGH	7
SPECIFICATIONS	7
SAILS AND RIGGING	7
GROUND TACKLE	8
ENGINE	8
Electronics	8
Salon	8
Galley	8
PILOTHOUSE	8
FORWARD CABIN	9
ADDITIONAL ITEMS	9
SAFETY EQUIPMENT	9
DECK FEATURES	9
COCKPIT FEATURES	9
COMFORT SYSTEMS	10
ENGINE AND ELECTRICAL	10
DISCLAIMER	10

Исключения	10
Отказ от ответственности	10
ФОТОГРАФИИ	12
1	12
2	12
3	12
4	12
5	12
6	12
7	13
8	13
9	13
10	13
11	13
12	13
13	14
14.1	14
14	14
15	14
16	14
17	14
18	15
19	15
20	15
21	15
22	15
23	15
24	16
25	16

26	16
27	16
КОНТАКТЫ	17
Контактная информация	17
Телефоны	17
Время работы	17
Адрес	17

ХАРАКТЕРИСТИКИ

Обзор

Fisher boats have retained much popularity with boat enthusiasts who sought a comfortable blend of a traditional sailing vessel and a motoryacht. Over a thousand Fishers were built over the years and its classic appearance yet practical design has helped this style vessel remain popular. This 1979 Fisher motorsailer has been designed and equipped for safe and comfortable extended cruising. Mariner would also make a comfortable live aboard vessel. With its trawler style bow, canoe stern and pilot house with high, molded bulwarks, Mariner is ready for coastal cruising and her next owner. Easy to see, located in Cambridge, Maryland.

Основная информация

Тип судна: Крейсерский кеч

Модельный год: 1976

Год постройки: 1976

Страна: United States

Размеры

Длина общая: 37' 0" (11.28m)

Ширина: 12' 0" (3.66m)

Макс. осадка: 5' 3" (1.60m)

Трапы: 50' 0" (15.24m)

Скорость, вместимость и масса

Крейс. скорость: 5 Kts. (6 MPH)

Макс. скорость: 7 Kts. (8 MPH)

Водоизмещение: 30000 Pounds

Вместимость воды: 110 Gallons

Объем топливного бака: 110 Gallons

Размещение

Всего кают: 1

Всего коек: 3

Всего ком. состава: 1

Корпус и палуба

Материал корпуса: Fiberglass

Информация о двигателе

Двигатели: 1

Производитель: MAN

Модель: Deutz Mann TD229-4

Тип двигателя: Inboard

Тип топлива: Diesel

ПОДРОБНОЕ ОПИСАНИЕ

MAIN DESCRIPTION

Fisher boats have retained much popularity with boat enthusiasts who sought a comfortable blend of a traditional sailing vessel and a motoryacht. Over a thousand Fishers were built over the years and its classic appearance yet practical design has helped this style vessel remain popular. This 1979 Fisher motorsailer has been designed and equipped for safe and comfortable extended cruising. Mariner would also make a comfortable live aboard vessel. With its trawler style bow, canoe stern and pilot house with high, molded bulwarks, Mariner is ready for coastal cruising and her next owner. Easy to see, located in Cambridge, Maryland.

WALKTHROUGH

Stepping aboard Mariner, one immediately notices the Fishers stability and seaworthiness. Its wide and easy to navigate topsides lead back to the teak accented cockpit forward the canoe style stern. The pilothouse is accessed through a companionway door just to port of the centerline, forward of the cockpit. Entering the cozy pilothouse, accented with a beautiful teak interior, excellent visibility 360 degrees and substantial elevation to easy see forward and aft. A companionway located starboard of the centerline leads one down into a comfortably sized salon with galley to port. A settee, table and seating for five is located forward of the galley. The head is located to starboard, across from the galley, next to the companionway to the upper helm. Moving forward, a roomy and comfortable sized V berth with storage below.

SPECIFICATIONS

SpecificationsLOA: 37 ftFull KeelBeam: 12'0"LWL: 32'6"Max Draft: 5'3"Displacement: 30,000 lbsBallast: 13000 lbsAirdraft: 50'

SAILS AND RIGGING

Furling Main Quantum Sails 2018Furling Mizzen Furling Genoa 2018All controlled from cockpitAll rigging replaced in 2017Ketch RigFarnet roller furling system on mainFarnet roller furling system on mizzenHarken MK3 roller furling system headsail 2009120% furling job (2019)All running rigging leads aft to cockpit sheet stoppers and winches for solo sailingcoachroof mounted mainsheet travelerInboard deck mounted genoa tracksOutboard bulwark mounted genoa tracksMast mounted spinnaker pole track / storage system (pole not included)Mast mounted halyard winchesCockpit coaming mounted genoa sheet winchesCockpit side mounted winches for main furling and downhaul

GROUND TACKLE

Heavy duty ground tackle Rocna 55 lb anchor Danforth anchor Bruce anchor 200 ft chain for main anchor multiple nylon rodes Sea anchor with 180' nylon rode

ENGINE

Repowered in 2001 Deutz Mann 88 hp model TD 229-41221 hours three blade prop

Electronics

2018 B&G MFD touchscreen 12 inch Integrated repeater, AIS and VHF Raymarine Chart plotter Radar Digital Depth C7 Raymarine ST 70 Autopilot with hydraulic motor Bow thruster EPIRB 406 with GPS

Salon

Large U shaped Settee to port converts to queen berth Long bench seat to starboard converts to a single berth Generous storage under and behind all seating Updated salon cushions and fabric 2009 Easy access to bilge through removable floor boards Privacy doors to pilothouse and forward cabin Espar diesel heater with duct to main salon and forward cabin Dickerson fireplace with venting mounted on starboard bulkhead Weems and Plath barometer, temperature, humidity and clock/tide mounted on port bulkhead Open teak storage cabinetry with fiddles mounted along port and starboard hull sides Customer bar and liquor cabinet with bottle storage Galley to port against pilothouse bulkhead Head to starboard against pilothouse bulkhead Full access to front of the engine under companionway steps 3 oil lamps Sound system with four speakers Four LED reading lights Three dome lights with night vision settings Two LED strips Twelve volt fan Red Lighting throughout boat for night vision retention

Galley

ENO 2 burner propane stove installed 2015 Pressure regulator and spare bottle in dedicated locker Large Stainless steel sink Franklin Chef 0.7 cubic ft microwave Norcold 110/12v refrigerator/freezer Large top loading ice box Tile backsplash Teak parquet flooring Hot and cold pressurized water Manual cold water foot pump IsoTemp slim 120 v water heater with heat exchanger - installed 2014 Under Over counter storage cabinetry Fire extinguisher

PILOTHOUSE

Simpson Lawrence rack and pinion steering Helm Station with full engine instrumentation and breaker panels Anchor windlass controls Auto pilot Captains helm chair L shaped settee with

removable table
Overhead chart storage
Powerful LED searchlight with remote control (wired and wireless)
Installed 2019
Sliding windows port, starboard and aft
3 forward windshield windows - center opens for ventilation
window wipers on side windows with fresh water spray
Full Navigation system with flip up chart desk
Storage cabinet
Overhead handrails and large overhead sliding hatch with plexiglass insert for sail visibility
Pilothouse sole boards lift for full access to engine and systems
Large storage area for tools, safety equipment, cockpit awning, tiller and grill
Mariner has three compasses, one large brass in the pilothouse, one in the cockpit and one in the forward cabin

FORWARD CABIN

Spacious cabin with louvered teak privacy door
Large double V berth bunk with removable filler cushion
Brass side ports with screens
Large overhead Bomar Ocean hatch
Bulkhead mounted teak ladder for easy hatch access
Hanging lockers
Storage under berth
LED reading light
12 volt fan
small compass to check heading

ADDITIONAL ITEMS

Gangway
BBQ with gas bottles
Man overboard pole
Sea Anchor with 180'line
Pair of stainless steel davits with blocks and lines
Cockpit shade with metal frame

SAFETY EQUIPMENT

Manual bilge pump
two automatic electric bilge pumps
One electric bilge pump - switch operated
Man overboard module
life sling
4 adult pfd's
hornbell
multiple fire extinguishers
Emergency tiller
stern boarding ladder
Epirb 406 with GPS
smoke alarm
Carbon monoxide detector

DECK FEATURES

High molded fiberglass bulwark with teak cap rail
Dual midship and aft drain chocks on side decks covered with teak planking
Raised coach roof
Trawler style bow with two bow rollers
Bow, stern and midship heavy duty cleats
Coachroof mounted
Stainless classic SS and red cowlings
Coachroof and pilothouse mounted handrails
New 18x18 Bomar "Ocean" hatch - forward cabin
Bulwark mounted life line running from stainless bow rail to stainless stern rail
Rigged jack lines to clasp harness lines
Three large fenders
Multiple smaller fenders and fender boards

COCKPIT FEATURES

Canoe stern
Deep cockpit with high molded fiberglass coaming
self bailing cockpit
Teak capped

bulwark"V" shaped cockpit settee with storage lockersCockpit canopyPair of removeable stainless dingy davits with blocks and linesSliding pilot house doorStainless Steel stern rail with mizzen sheet tackCustom teak sole grateBrass light fixture with led lampMan overboard sling and tackle ready for deployment on mizzen boomEast deployable Man Overboard marker with weight, float and flag

COMFORT SYSTEMS

Side power SP75T 4.4Kw Bow Thruster with dedicated batteriesLofrans Tigress 1000 watt Electric Anchor Windlass with foot switches and helm control stationsEspar D4L Diesel heater with ducting for main and forward cabinDickerson solid fuel fireplace with flue and tiled heat resistant backingBlack and Decker 10.000 btu portable air conditioning unit12 volt fans in pilothouse and belowbuilt in liquor cabinet and bottle storage

ENGINE AND ELECTRICAL

Deutz TD229-4 88hp freshwater cooled diesel installed 2001Dual fuel filters, switchableFuel polishing system with dedicated pumpSingle lever engine controlFull engine instrumentationPowerMax 150 amp High output alternator 2010Balmar Max charge MC-614 multi stage voltage regulator -2010Freedom 25 - 250 watt Inverter charger -2009Amp hour +2 meter for monitoring battery discharge30 amp shore power inlet2 AGM 8D house batteries2 AGM G24 580 CCA Engine start batteries2 AGM G27 750 CCA Bow thruster and windlass batteries3 battery selector switches - one for each battery bankMultiple 110v outlets - GFI protected

DISCLAIMER

The Company offers the details of this vessel in good faith but cannot guarantee or warrant the accuracy of this information nor warrant the condition of the vessel. A buyer should instruct his agents, or his surveyors, to investigate such details as the buyer desires validated. This vessel is offered subject to prior sale, price change, or withdrawal without notice.

Исключения

При продаже яхты исключаются личные вещи владельца.

Отказ от ответственности

Компания предоставляет описание судна или яхты добросовестно, но не может гарантировать точность этой информации, а также не ручается за техническое состояние. Покупатель должен проинструктировать своих агентов или оценщиков исследовать представленную информацию более подробно, по собственному желанию.

Продажа судна или яхты, изменение цены или снятие с продажи будет происходить без предварительного уведомления.

ФОТОГРАФИИ

1



2



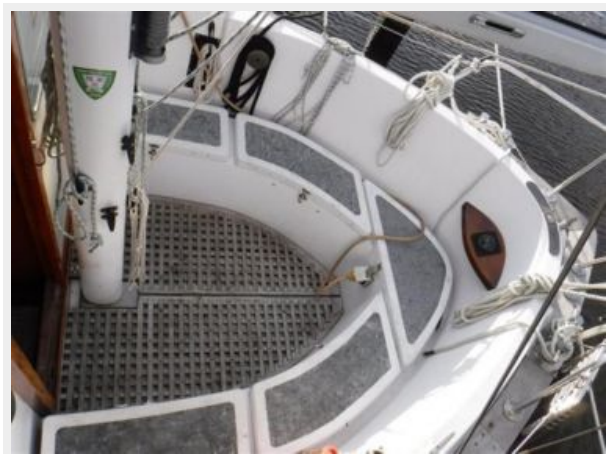
3



4



5



6



7



8



9



10



11



12



13



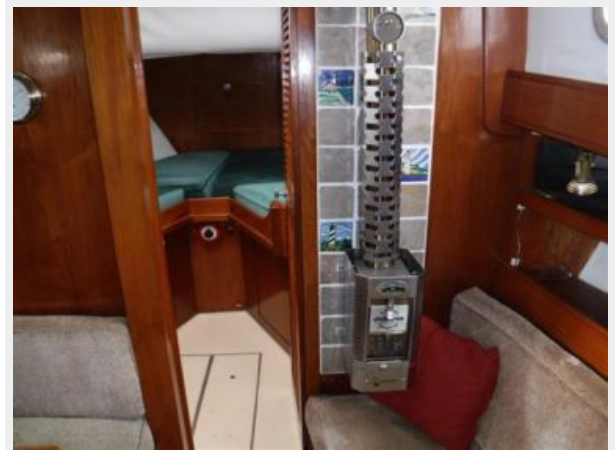
14.1



14



15



16



17



18



19



20



21



22



23



24



25



26



27



КОНТАКТЫ

Андрей Шестаков (Andrey Shestakov) – ведущий яхтенный брокер отдела продаж яхт и судов компании Shestakov Yacht Sales Inc. Официальный представитель Shestakov Yacht Sales Inc. для русскоговорящих клиентов в центральном офисе компании в Майами/Форт Лодердейл/Флорида/США.

Контактная информация

Email: andrey@shestakovyachtsales.com

Web: shestakovyachtsales.com

Телефоны

Краснодарский край: **+7(918)465-66-44**

США, Майами, Флорида: **+1(954)274-4435**

Время работы

Понедельник – Суббота: **9:00 - 21:00**
EDT

Воскресенье: **Закрито**

Адрес



Harbour Towne Marina, 850 NE 3rd St,
STE 213, Dania, FL 33004