

JUST THE TIP — INVINCIBLE



Builder: INVINCIBLE

LOA: 39' 0" (11.89m)

Year Built: 2016

Beam: 11' 0" (3.35m)

Model: Center Console

Price: PRICE ON APPLICATION

Location: United States

Our experienced yacht broker, Andrey Shestakov, will help you choose and buy a yacht that best suits your needs **Just the Tip — INVINCIBLE** from our catalogue. Presently, at Shestakov Yacht Sales Inc., we have a wide variety of yachts available on our sale's list. We also work in close contact with all the big yacht manufacturers from all over the world.

If you would like to buy a yacht **Just the Tip — INVINCIBLE** or would like help answering any questions concerning purchasing, selling or chartering a yacht, please call **+1(954)274-4435**

TABLE OF CONTENTS

TABLE OF CONTENTS	2
SPECIFICATIONS	4
Overview	4
Basic Information	4
Dimensions	4
Speed, Capacities and Weight	4
Hull and Deck Information	4
Engine Information	4
DETAILED INFORMATION	5
Standard Features	5
Electronics	5
Additional Options	5
Exclusions	6
Disclaimer	6
PHOTOS	7
39_invincible_just_the_tip__bow3	7
39_invincible_just_the_tip__bow5	7
39_invincible_just_the_tip__bow6	7
39_invincible_just_the_tip__bow9	7
39_invincible_just_the_tip__bow10	7
39_invincible_just_the_tip__bow12	7
39_invincible_just_the_tip__bow13	8
39_invincible_just_the_tip__helm1	8
39_invincible_just_the_tip__helm4	8
39_invincible_just_the_tip__helm5	8
39_invincible_just_the_tip__head3	8
39_invincible_just_the_tip__head4	8
39_invincible_just_the_tip__cockpit8	9

39_invincible_just_the_tip__cockpit1	9
39_invincible_just_the_tip__cockpit3	9
39_invincible_just_the_tip__cockpit4	9
39_invincible_just_the_tip__cockpit11	9
39_invincible_just_the_tip__profiles6	9
39_invincible_just_the_tip__profiles19	10
39_invincible_just_the_tip__profiles21	10
39_invincible_just_the_tip__profiles22	10
39_invincible_just_the_tip__profiles23	10
CONTACTS	11
Contact details	11
Telephones	11
Office hours	11
Address	11

SPECIFICATIONS

Overview

This one owner 2017 Invincible 39' CC is rigged to be easy and efficient! Powered by Triple 300hp Yamahas, still under warranty, provides long range and speed. Features include Garmin electronics package, Chiller plates in 3 hatches, Dive Door, Rupp Riggers, Quick Anchor Windlass and more! Located in Palm Beach Gardens, FL.

Basic Information

Category: Center Console

Model Year: 2017

Year Built: 2016

Country: United States

Dimensions

LOA: 39' 0" (11.89m)

Beam: 11' 0" (3.35m)

Speed, Capacities and Weight

Fuel Capacity: 540 Gallons

Hull and Deck Information

Hull Material: Fiberglass

Engine Information

Engines: 1

Manufacturer: Yamaha

DETAILED INFORMATION

Standard Features

- Above and Below Deck Livewells
- AGM Sealed Batteries
- Built-In Anchor Locker
- Deluxe Console with Fully-Lined Interior-Room for Full-Sized Head
- Exceptionally Generous Under-Deck Storage
- Finished Bilge

- Under Gunnel Lighting
- High-Speed Pickup for Livewell Seachest
- Interior Console Lights
- Saltwater Washdown
- Three Automatic 2,000 GPH Bilge Pumps

- Waterproof Switches and Circuit Breaker Protected System
- 100% Vinylester Resin Hull
- 316 Stainless-Steel Hardware
- K Plane Style Trim Tabs
- Vacuum-Bagged Cored Hull Construction

Electronics

- Garmin 7616 (2)
- Garmin open array radar
- Garmin Autopilot
- Fusion Stereo
- JL Audio Speakers
- JL Audio Amplifiers
- FLIR Night Vision

Additional Options

- Chiller plates in 3 hatches
- New Bentley Stitching cushion son Console/Leaning post
- Hardtop with 3 side enclosure, overhead lights, LED spreader lights and rocket launcher
- Rupp Riggers
- 62 gallon live well in transom with sea chest
- Underwater lights
- Dive door with ladder

- Flush deck fish boxes and live well
- Forward U shape seating with backrests
- Aft fold down jump seats
- Tackle drawers under helm seat
- Wash down pump
- 30 rod holders
- Quick anchor windlass
- Canvas covers: Console, leaning post, forward console and motors

Exclusions

Owner's personal belongings.

Disclaimer

The Company offers the details of this vessel or yacht in good faith but cannot guarantee or warrant the accuracy of this information nor warrant the condition of the vessel. A buyer should instruct his representatives, agents, or his surveyors, to investigate such details as the buyer desires validated. This vessel or yacht is offered subject to prior sale, price change, or withdrawal without notice.

PHOTOS

39_invincible_just_the_tip__bow3



39_invincible_just_the_tip__bow5



39_invincible_just_the_tip__bow6



39_invincible_just_the_tip__bow9



39_invincible_just_the_tip__bow10



39_invincible_just_the_tip__bow12



39_invincible_just_the_tip__bow13



39_invincible_just_the_tip__helm1



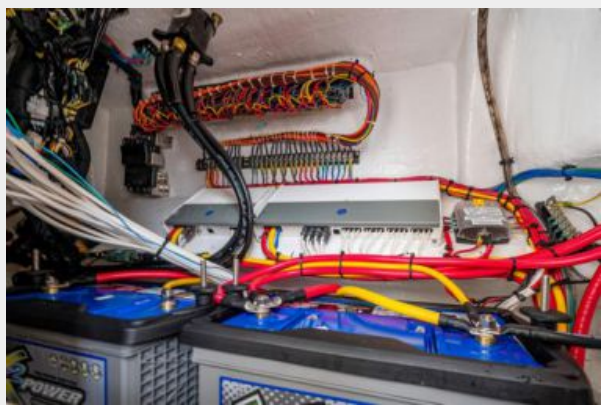
39_invincible_just_the_tip__helm4



39_invincible_just_the_tip__helm5



39_invincible_just_the_tip__head3



39_invincible_just_the_tip__head4



39_invincible_just_the_tip_cockpit8



39_invincible_just_the_tip_cockpit1



39_invincible_just_the_tip_cockpit3



39_invincible_just_the_tip_cockpit4



39_invincible_just_the_tip_cockpit11



39_invincible_just_the_tip_profiles6



39_invincible_just_the_tip_profiles19



39_invincible_just_the_tip_profiles21



39_invincible_just_the_tip_profiles22



39_invincible_just_the_tip_profiles23



CONTACTS

Andrey Shestakov, leading yacht broker of the sales department of Shestakov Yacht Sales Inc. Shestakov Yacht Sales Inc., the official representative of the Miami/Fort Lauderdale FL headquarters.

Contact details

Email: andrey@shestakovyachtsales.com

Web: shestakovyachtsales.com/en/

Telephones

USA: +1(954)274-4435

Office hours

Monday – Saturday: **9:00 - 21:00** EDT

Sunday: **closed**

Address



Harbour Towne Marina, 850 NE 3rd St,
STE 213, Dania, FL 33004