

RP110 (NEW BOAT SPEC) — HORIZON



Builder: HORIZON

Year Built: 2022

Model: Motor Yacht

Price: PRICE ON APPLICATION

Location: United States

LOA: 110' 0" (33.53m)

Beam: 25' 0" (7.62m)

Max Draft: 5' 11" (1.80m)

Our experienced yacht broker, Andrey Shestakov, will help you choose and buy a yacht that best suits your needs RP110 (New Boat Spec) — HORIZON from our catalogue. Presently, at Shestakov Yacht Sales Inc., we have a wide variety of yachts available on our sale's list. We also work in close contact with all the big yacht manufacturers from all over the world.

If you would like to buy a yacht RP110 (New Boat Spec) — HORIZON or would like help answering any questions concerning purchasing, selling or chartering a yacht, please call +1(954)274-4435

TABLE OF CONTENTS

TABLE OF CONTENTS	2
SPECIFICATIONS	5
Overview	5
Basic Information	5
Dimensions	5
Speed, Capacities and Weight	6
Accommodations	6
Hull and Deck Information	6
Engine Information	6
PHOTOS	7
Exterior "Wild Duck"	7
Exterior "Wild Duck"	7
Exterior III	7
Exterior VI	7
Flybridge "Wild Duck"	7
Flybridge "Wild Duck"	7
Flybridge "Wild Duck"	8
Bow Deck "Wild Duck"	8
Bow Deck "Wild Duck"	8
Aft Deck "Wild Duck"	8
Aft Deck "Wild Duck"	8
Main Salon "Wild Duck"	8
Main Salon "Wild Duck"	9
Main Salon "Wild Duck"	9
Main Salon "Wild Duck"	9
Main Salon "Wild Duck"	9
Wine Storage "Wild Duck"	9
Country Kitchen "Wild Duck"	9

Galley "Wild Duck"	10
Galley "Wild Duck"	10
Wine Storage "Wild Duck"	10
Pilothouse "Wild Duck"	10
Master Stateroom "Wild Duck"	10
Pilothouse "Wild Duck"	10
36-RP110-805-MY WILD DUCK-MASTER 7950-R	11
Master Head "Wild Duck"	11
Companionway "Wild Duck"	11
Bow VIP "Wild Duck"	11
Bow VIP Head "Wild Duck"	11
Twin Stateroom "Wild Duck"	11
Twin Stateroom #2 "Wild Duck"	12
Crew "Wild Duck"	12
Crew "Wild Duck"	12
Engine Room "Wild Duck"	12
Exterior "Andrea VI"	12
Exterior "Andrea VI"	12
Aft Deck "Andrea VI"	13
Salon "Andrea VI"	13
Salon "Andrea VI"	13
Formal Dining "Andrea VI"	13
Galley "Andrea VI"	13
Formal Dining "Andrea VI"	13
Galley "Andrea VI"	14
Galley "Andrea VI"	14
Pilothouse "Andrea VI"	14
Stairwell "Andrea VI"	14
Companionway "Andrea VI"	15

Master Stateroom "Andrea VI"	15
Master Bath "Andrea VI"	15
Master Stateroom "Andrea VI"	15
Starboard VIP Head "Andrea VI"	16
Starboard VIP Stateroom "Andrea VI"	16
Port VIP Head "Andrea VI"	16
Port VIP Stateroom "Andrea VI"	16
Bow VIP Stateroom "Andrea VI"	17
Bow VIP Head "Andrea VI"	17
Country Kitchen Forward (optional items may be shown)	17
Engine Room "Andrea VI"	17
On Deck Master (optional items may be shown)	18
CONTACTS	19
Contact details	19
Telephones	19
Office hours	19
Address	19

SPECIFICATIONS

Overview

Please note that this listing represents a model specification for a new build and not an actual hull for sale. For more information on this model and build availability, please contact us*

Featuring exterior design by JC Espinosa, the Horizon RP110 superyacht focuses on providing unobstructed views with large, sweeping windows that combine with fluid style lines to create a sleek and modern profile. She exudes sophistication in design and style — her double chine hull design, from naval architect Donald Blount, provides excellent sea keeping, with stability and enhanced hydrodynamics to minimize drag and improve overall performance.

The variety of layouts and amenities available to clients showcases the versatility of the Horizon RP110 superyacht model as well as Horizon's flexibility as a custom luxury yacht builder. With a 25' beam, the Horizon RP110 offers generous living and entertaining spaces on every level for cruising in the utmost comfort and luxury.

Basic Information

Category: Motor Yacht

Model Year: 2022

Year Built: 2022

Country: United States

Vessel Top: Raised Pilothouse

Fly Bridge: Yes

Dimensions

LOA: 110' 0" (33.53m)

LWL: 90' 1" (27.46m)

Beam: 25' 0" (7.62m)

Max Draft: 5' 11" (1.80m)

Clearance: 0' 0" (0.00m)

Speed, Capacities and Weight

Displacement: 283290 Pounds

Water Capacity: 800 Gallons

Holding Tank: 250 Gallons

Fuel Capacity: 5550 Gallons

Accommodations

Total Cabins: 5

Total Berths: 7

Sleeps: 10

Total Heads: 7

Crew Cabin: 3

Crew Berths: 6

Crew Sleeps: 6

Crew Heads: 2

Hull and Deck Information

Hull Material: Fiberglass

Hull Configuration: Semi-Displacement

Engine Information

Engines: 2

Manufacturer: CAT

Model: C32A

PHOTOS

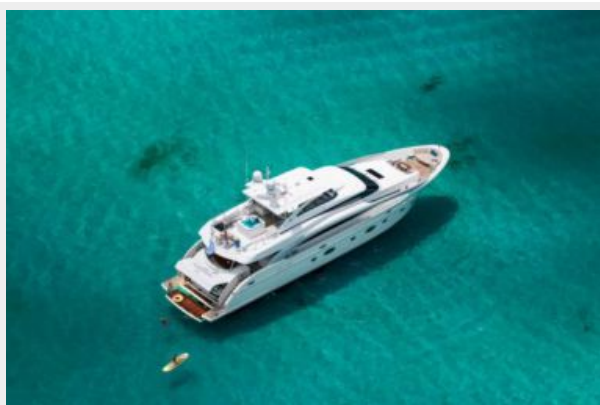
Exterior "Wild Duck"



Exterior "Wild Duck"



Exterior III



Exterior VI



Flybridge "Wild Duck"



Flybridge "Wild Duck"



Flybridge "Wild Duck"



Bow Deck "Wild Duck"



Bow Deck "Wild Duck"



Aft Deck "Wild Duck"



Aft Deck "Wild Duck"



Main Salon "Wild Duck"



Main Salon "Wild Duck"



Main Salon "Wild Duck"



Main Salon "Wild Duck"



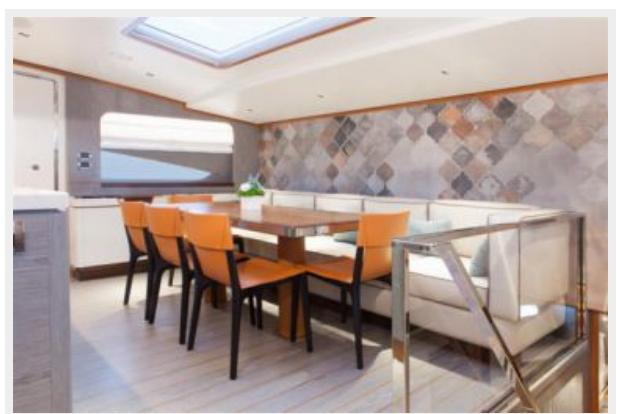
Main Salon "Wild Duck"



Wine Storage "Wild Duck"



Country Kitchen "Wild Duck"



Galley "Wild Duck"



Galley "Wild Duck"



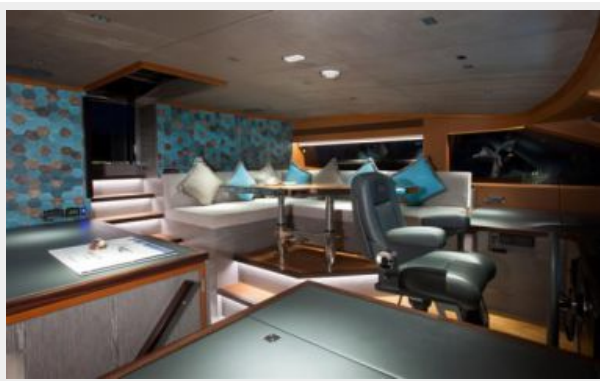
Wine Storage "Wild Duck"



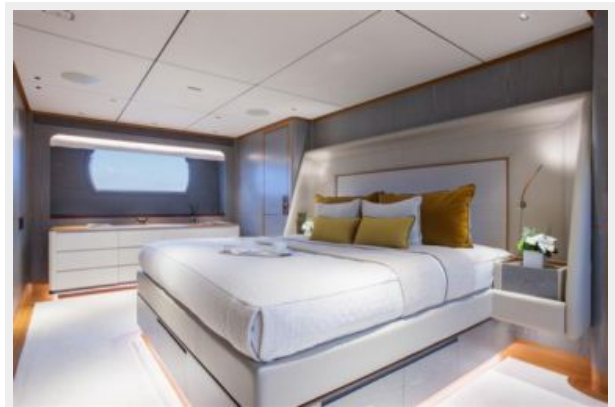
Pilothouse "Wild Duck"



Pilothouse "Wild Duck"



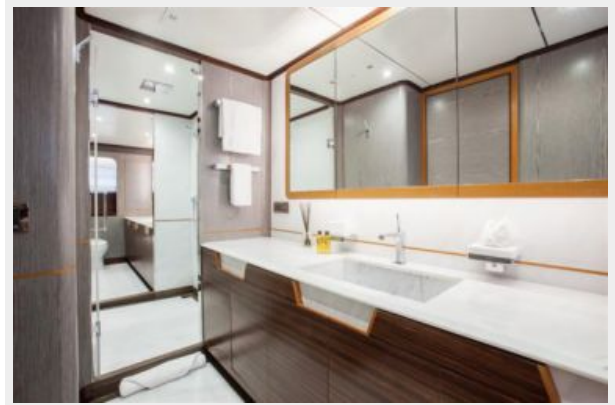
Master Stateroom "Wild Duck"



**36-RP110-805-MY WILD DUCK-MASTER
7950-R**



Master Head "Wild Duck"



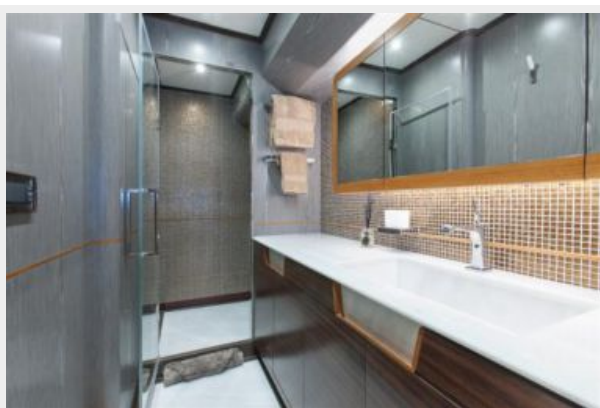
Companionway "Wild Duck"



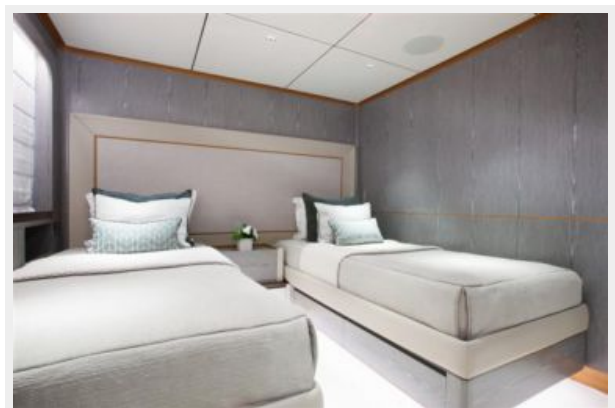
Bow VIP "Wild Duck"



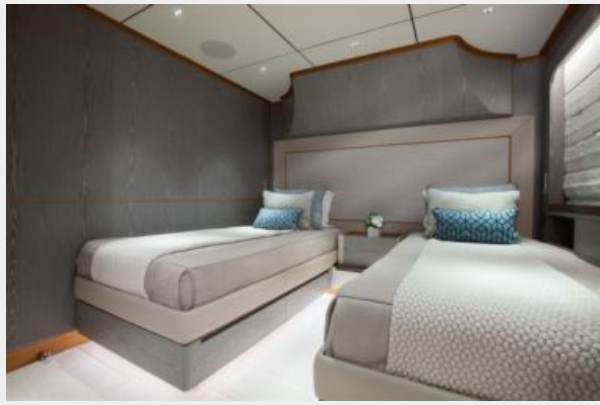
Bow VIP Head "Wild Duck"



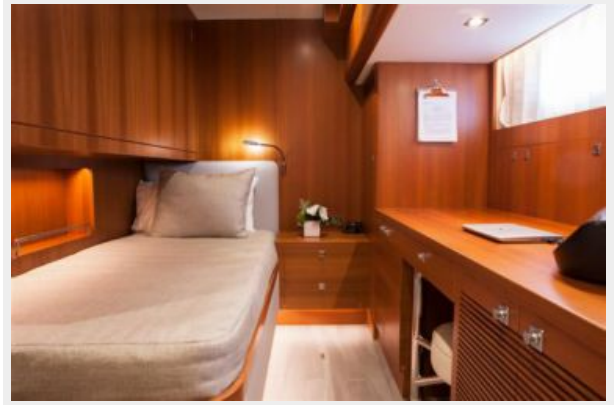
Twin Stateroom "Wild Duck"



Twin Stateroom #2 "Wild Duck"



Crew "Wild Duck"



Crew "Wild Duck"



Engine Room "Wild Duck"



Exterior "Andrea VI"



Exterior "Andrea VI"



Aft Deck "Andrea VI"



Salon "Andrea VI"



Salon "Andrea VI"



Formal Dining "Andrea VI"



Formal Dining "Andrea VI"



Galley "Andrea VI"



Galley "Andrea VI"



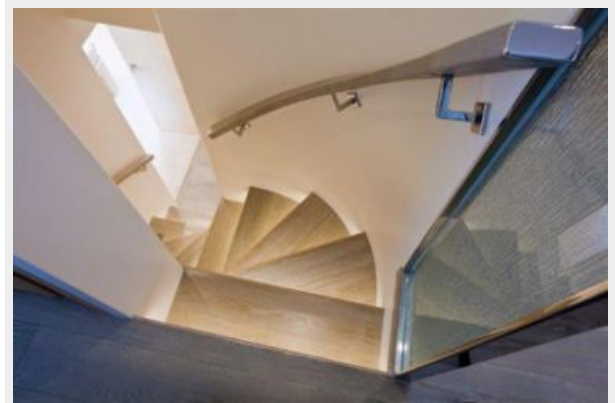
Galley "Andrea VI"



Pilothouse "Andrea VI"



Stairwell "Andrea VI"



Companionway "Andrea VI"



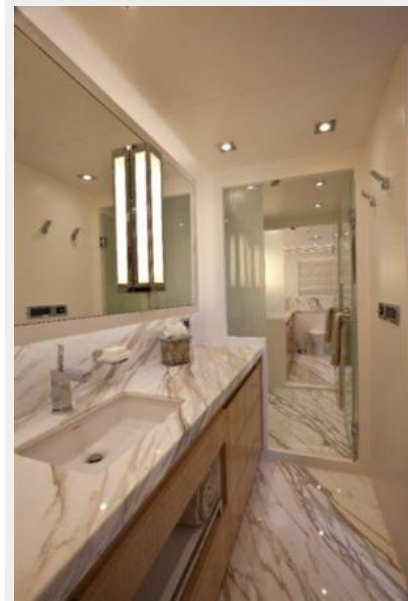
Master Stateroom "Andrea VI"



Master Stateroom "Andrea VI"

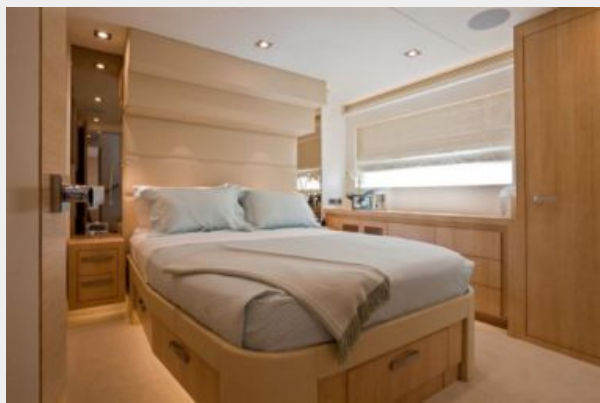


Master Bath "Andrea VI"



Starboard VIP Head "Andrea VI"

Starboard VIP Stateroom "Andrea VI"



Port VIP Head "Andrea VI"

Port VIP Stateroom "Andrea VI"



Bow VIP Stateroom "Andrea VI"

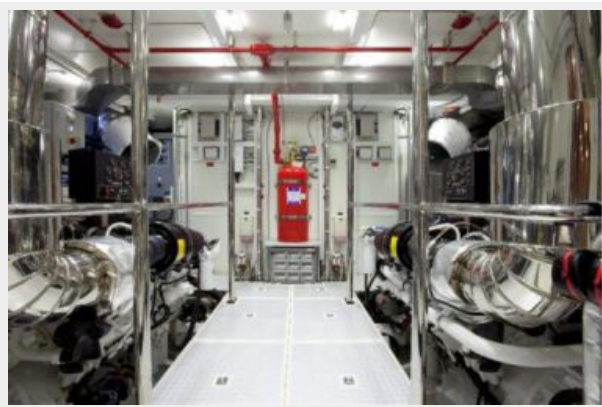


Bow VIP Head "Andrea VI"



Country Kitchen Forward (optional items may be shown)

Engine Room "Andrea VI"



On Deck Master (optional items may be shown)



CONTACTS

Andrey Shestakov, leading yacht broker of the sales department of Shestakov Yacht Sales Inc. Shestakov Yacht Sales Inc., the official representative of the Miami/Fort Lauderdale FL headquarters.

Contact details

Email: andrey@shestakovyachtsales.com

Web: shestakovyachtsales.com/en/

Telephones

USA: +1(954)274-4435

Office hours

Monday – Saturday: **9:00 - 21:00** EDT

Sunday: **closed**

Address



Harbour Towne Marina, 850 NE 3rd St,
STE 213, Dania, FL 33004