

PRINCESS 85 — PRINCESS YACHTS



Builder: PRINCESS YACHTS

Year Built: 2009

Model: Motor Yacht

Price: PRICE ON APPLICATION

Location: United States

LOA: 85' 0" (25.91m)

Beam: 20' 8" (6.30m)

Max Draft: 5' 5" (1.65m)

Our experienced yacht broker, Andrey Shestakov, will help you choose and buy a yacht that best suits your needs **Princess 85 — PRINCESS YACHTS** from our catalogue. Presently, at Shestakov Yacht Sales Inc., we have a wide variety of yachts available on our sale's list. We also work in close contact with all the big yacht manufacturers from all over the world.

If you would like to buy a yacht **Princess 85 — PRINCESS YACHTS** or would like help answering any questions concerning purchasing, selling or chartering a yacht, please call **+1(954)274-4435**

TABLE OF CONTENTS

| | |
|------------------------------|----|
| TABLE OF CONTENTS | 2 |
| SPECIFICATIONS | 4 |
| Overview | 4 |
| Basic Information | 4 |
| Dimensions | 4 |
| Speed, Capacities and Weight | 5 |
| Accommodations | 5 |
| Hull and Deck Information | 5 |
| Engine Information | 5 |
| DETAILED INFORMATION | 6 |
| Salon | 6 |
| Galley | 6 |
| Lower Helm Station | 7 |
| Accommodations | 8 |
| Aft Deck | 9 |
| Transom | 9 |
| Flybridge | 9 |
| Flybridge Helm Station | 10 |
| Forward Deck | 10 |
| Hull & Construction | 10 |
| Air Conditioning and Heating | 11 |
| Washer & Dryer | 11 |
| Central Vacuum Cleaner | 12 |
| Engine Room | 12 |
| Exclusions | 13 |
| Disclaimer | 13 |
| PHOTOS | 14 |
| CONTACTS | 33 |

| | |
|-----------------|----|
| Contact details | 33 |
| Telephones | 33 |
| Office hours | 33 |
| Address | 33 |

SPECIFICATIONS

Overview

85' Princess Motor Yacht 2009

Preliminary Listing

Remarks:

Trac Stabilizers

Hydraulic swim platform

Opacmare electro-hydraulic pasarelle located outboard transom to starboard

Electro Opacmare Hydraulic Davit 600 Kg on fly bridge

New headliners throw-out the boat and must of the staterooms has new wall covers

Hard top

Idromar Watermakers

Hydraulic Bow & Stern Thrusters

Total of six (6) underwater lights sighted: four (4) at the transom and two (2) aft ship hullsides

TracVision KVH Sat TV

Basic Information

Category: Motor Yacht

Model Year: 2009

Year Built: 2009

Country: United States

Dimensions

LOA: 85' 0" (25.91m)

Beam: 20' 8" (6.30m)

Max Draft: 5' 5" (1.65m)

Speed, Capacities and Weight

Water Capacity: 396 Gallons

Holding Tank: 132 Gallons

Fuel Capacity: 2219 Gallons

Accommodations

Total Cabins: 4

Total Heads: 6

Hull and Deck Information

Hull Material: Fiberglass

Engine Information

Engines: 2

Manufacturer: MTU

Model: 12V2000

Engine Type: Inboard

Fuel Type: Diesel

DETAILED INFORMATION

Salon

The Main Salon featured a large U-shaped sectional sofa, a wood coffee table, U-Line on main salon fridge and freezer an electric Samsung TV lift, Pioneer

blu-ray disc player, Pioneer audio visual and plentiful storage. The Dining Room, located forward of the Main Salon, featured a custom wood dining table and eight (8) dining chairs.

The Dinette area, located to port of the Lower Helm Station, featured a U-shaped bench and a wood table.

Galley

LOCATION:

The Galley was located forward of the Dining Room.

COUNTERTOP & SINK:

Natural stone countertop with a dual compartment sink.

REFRIGERATOR:

Manufacturer: Sub-Zero

FREEZER:

Manufacturer: Miele

COOKTOP:

Manufacturer: Miele

Type: Electric Range / Four (4) Burners Powered up.

COMPACT OVEN:

Manufacturer: Miele

MICROWAVE:

Manufacturer: Panasonic (2 units)

Model: Inverter

Locations: Galley & Crew

EXTRACTOR / VENT:

Manufacturer: Elica

DISHWASHER:

Manufacturer: Miele

COMPACT REFRIGERATOR / FREEZER:

Manufacturer: U-Line on main salon

Lower Helm Station

Located forward of the Galley, featured an electric captain's helm seat, a U-shaped bench, a wood dinette table, a three (3) panel windshield, an electric window, a manual weather-tight door, engine & steering controls, and full instrumentation.

One (1) electric captain's helm seat and a U-shaped bench located at the Lower Helm Station

MTU electronic controls

Low oil pressure alarm

Vhf Manufacturer: Simrad Model:RS-87

Autopilot Manufacturer: Raymarine Model:ST6002 SmartPilot

BOW THRUSTER:American Bow Thrusters Type: Hydraulic

STERN THRUSTER: Manufacturer: American Bow Thrusters Type:Hydraulic

ANTI-ROLL CONTROL / STABILIZERS: Manufacturer: TRAC

ENGINES DIGITAL DISPLAYS: Manufacturer:MTU (2 units) Location:

FURUNI NAVNET GPS / RADAR / CHART / NAVIGATION SYSTEM:

(2) Raymarine ST60+ MULTI-FUNCTION DISPLAYS

Furuno Radar

Accommodations

MASTER'S SUITE: The mid-ship/Master's Suite provides sleeping for two adults on a King berth (w/ storage below), a walk-in closet, a desk/vanity with chair (to port), two (2) seats, an LCD TV, a Bose music entertainment system, a compact refrigerator, a safe, and a full head compartment (aft to starboard).

FORWARD VIP'S STATEROOM: The forward/VIP's

Stateroom provides sleeping for two adults on a Queen berth (w/ storage below), a walk-in closet, a hanging locker, an LCD TV, a Bose music entertainment system, an overhead escape hatch, and a full head compartment (aft).

STARBOARD VIP'S STATEROOM: The starboard/VIP's Stateroom provides sleeping for two adults on a full berth (w/ storage below), a hanging locker, an LCD TV, a music entertainment system, and a full head compartment (aft).

PORT GUEST'S STATEROOM: The port/Guest's Stateroom provides sleeping for one adult on a single berth (w/ storage below), a hanging locker, an LCD TV, an AM/FM radio & CD/DVD player, and a full head compartment (aft).

CREW SALON: The Crew Salon, located aft of the engine room, featured an L-shaped sofa, an LCD TV, a DVD player, a compact refrigerator/freezer, a microwave, .

PORT CREW STATEROOM: The aft to port of the engine room/Crew Stateroom provides sleeping for two adults on upper & lower single bunk berths (w/ storage below), a hanging locker, and a satellite receiver.

STARBOARD CREW STATEROOM: The aft to starboard of the engine room/Crew Stateroom provides sleeping for two adults on upper & lower single bunk berths (w/ storage below) and a hanging locker.

HEADS:

Total of six (6) head compartments, located at the each Stateroom, forward to starboard of the Main Salon (Day head), and at the Crew Salon (to port).

Aft Deck

Aft Deck with teak deck overlay, featured a Docking Station (forward to port), a molded FRP staircase to the flybridge, a sliding door to the main cabin, a custom teak table, a large bench seat (aft), two (2) deck chairs, boarding entry doors (forward to port and starboard), two (2) capstans, emergency fuel shut-off valves (forward), a manual bilge pump (forward to port), and various storage compartments

A full breadth three (3) panel glass sliding glass door provides access from the Aft Deck into the Main Salon.

Aft Deck Docking Station

Transom

Reinforced FRP featured an integral FRP swim platform (w/ teak overlay), an electro-hydraulic swim platform extension (w/ teak overlay), a retractable stainless steel swim access ladder (to port), a removable portable swim ladder, a manual weather-tight door (to the Crew Quarters), two (2) shore power cablemasters (to starboard), an electro-hydraulic pasarelle (to starboard), steps to the Aft Deck (to port and starboard), a deck shower (to starboard), a shore water connection (to starboard), a storage hold (to port), and railing transom doors (to port and starboard).

Opacmare electro-hydraulic pasarelle located outboard transom to starboard

Electro-hydraulic FRP swim platform extension (w/ teak deck overlay)

Flybridge

Flybridge with teak deck overlay, featured a U-shaped bench (w/ storage below), two (2) deck chairs, a wood table, a service bar (to starboard, with a natural stone countertop and a stainless steel sink/faucet, an electric grill, an automatic ice maker, and a compact refrigerator/freezer), an electro-hydraulic davit (aft), and various storage compartments.

Opacmare electro-hydraulic davit (label stated a Max Capacity 600 kg) located aft at the flybridge. To lift tender, jet ski, or dinghy

FRP hardtop structure featured an electrically retractable white canvas sun-roof

FRP support structure for the FRP hardtop located at the Flybridge.

Coated aluminum tubular antenna mast located at the FRP hardtop.

(2) Life rafts Arimar

ACR Electronics dual beam searchlight located on the FRP hardtop

Flybridge Helm Station

Flybridge Helm Station with teak deck overlay, featured two (2) captain's helm seats, a U-shaped bench (w/ storage below), a wrap-around tinted windscreen, engine & steering controls, and full instrumentation

Two (2) captain's helm seats and one (1) U-shaped bench (w/ storage below) located at the Flybridge Helm Station.

MTU electronic controls

Autopilot Raymarine Model:ST6002 SmartPilot

BOW THRUSTER:American Bow Thrusters Type: Hydraulic

STERN THRUSTER: Manufacturer: American Bow Thrusters Type:Hydraulic

FURUNI NAVNET GPS / RADAR / CHART / NAVIGATION SYSTEM:

(2) Raymarine ST60+ MULTI-FUNCTION DISPLAYS

Forward Deck

The forward deck featured a large bench, a wood table, a sun pad area, and various storage lockers.

Hull & Construction

Total of seventeen (17) portlights and eight (8) hullside windows sighted.

Athwartships reinforcement enhanced by bulkheads bonded to the hull with FRP

Deep bilges provide the area for most boat systems and tankage.

Cleats : Total of ten (10) cleats sighted

Stainless steel tubular railing and stanchion safety system (on top of the bulwark) surrounds the

bow, forward deck, and side decks.

Stainless steel tubular grab rails located outboard transom

FRP boarding doors were located forward to port and starboard of the Aft Deck

A molded FRP staircase located forward to starboard at the Aft Deck provides access up to the flybridge

Two (2) stainless steel anchor fairleads through the stem of the vessel with dual rollers and two (2) hydraulic windlasses

One (1) manual weather-tight door located centerline outboard transom provides access into the Crew Quarters

One (1) manual weather-tight door located aft at the starboard side deck provides access to the engine room staircase.

One (1) manual weather-tight door located at the Galley provides access to the port side deck.

One (1) manual weather-tight door located at the Lower Helm Station provides access to the starboard side deck

The main cabin house sides featured fixed panel windows

The Lower Helm Station featured a three (3) panel windshield with three (2) windshield wiper systems

Air Conditioning and Heating

Cruisair : Total of ten (10) Cruisair digital controls sighted at the following locations: Main Salon, Galley, Lower Helm Station, Master Suite, Forward VIP Stateroom, Starboard VIP Stateroom, Port Guest Stateroom, Crew Salon, Port Crew Stateroom, and Starboard Crew Stateroom.

Washer & Dryer

Manufacturer: Miele

Model: WT-2780

Location: Lower Corridor Powered up.

WASHER & DRYER:

Manufacturer: Bosch

Location: (Staircase) Crew Quarters

Central Vacuum Cleaner

Manufacturer: Beam

Location: Corridor Bilge (forward)

Engine Room

Twin, MTU 2000CR V-12, turbo charged, intercooled, fresh water cooled, marine diesel engines with 1770 hours

Twin Onan generators 27 Kw with 6950 & 6970 Hours

ZF Transmissions ZF 2060 A. Ratio: 2.467 : 1A

Two (2) oil change pumps

Conventional MTU air filters (dual per main engine).

Four (4) 24V DC blowers/fans

American Bow Thruster hydraulic oil tank

Engine room lights

ZF Transmissions ZF 2060 A. Ratio: 2.467 : 1A

Mastervolt (2 units) 24/100-C

Victron Energy Skylla-TG / 24 Volts, 100 Amps

Shore Power Two (2). Approximately 50' long each

Two (2) Cablemaster

Fuel capacity 2,219 Gallons

Two (2) fuel transfer pumps

One (1) Gianneschi 24V DC fresh water pump

Hot water heater Howden

Idromar International Watermakers Model MC5s

Fireboy (2 units) HFC-227 / Automatic Halon

Exclusions

Owner's personal belongings.

Disclaimer

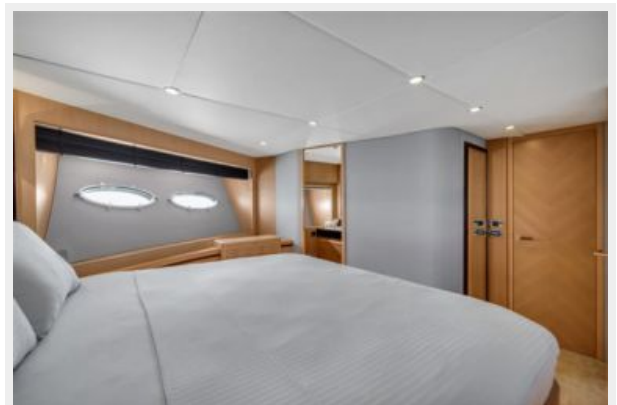
The Company offers the details of this vessel or yacht in good faith but cannot guarantee or warrant the accuracy of this information nor warrant the condition of the vessel. A buyer should instruct his representatives, agents, or his surveyors, to investigate such details as the buyer desires validated. This vessel or yacht is offered subject to prior sale, price change, or withdrawal without notice.

PHOTOS





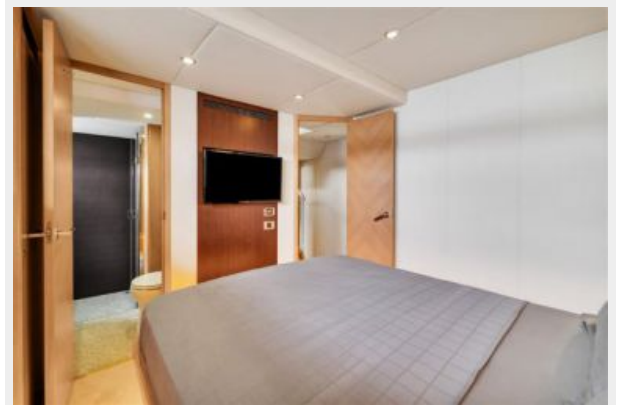




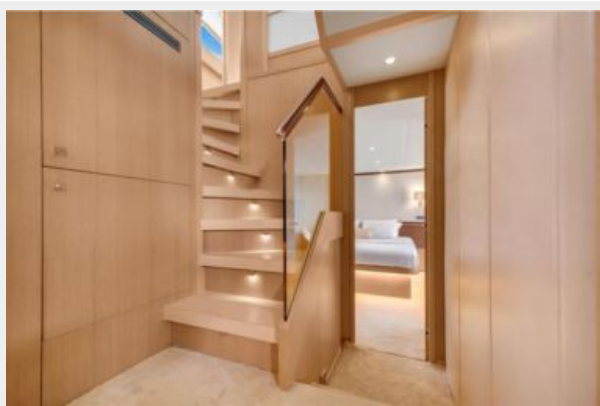
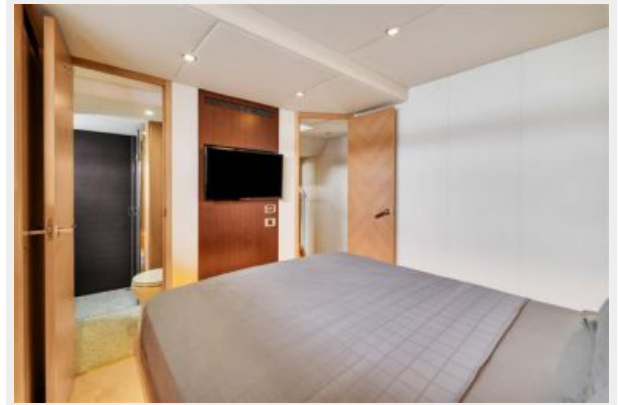










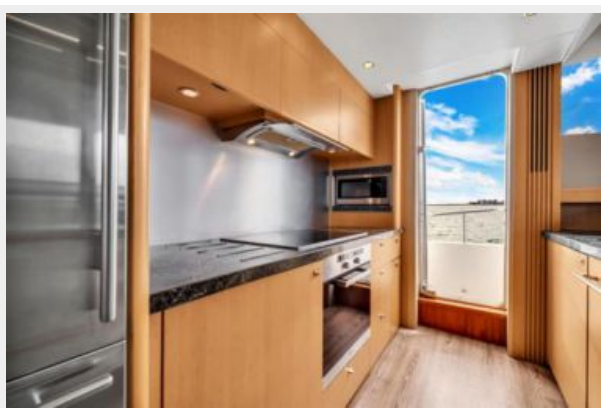
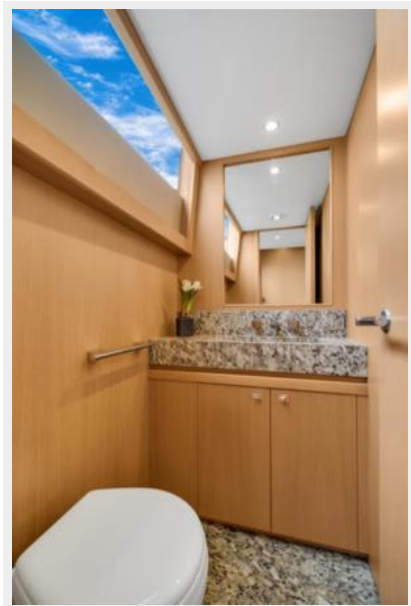
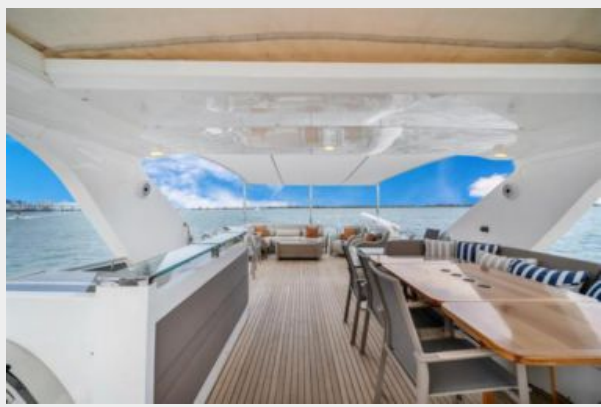




















CONTACTS

Andrey Shestakov, leading yacht broker of the sales department of Shestakov Yacht Sales Inc. Shestakov Yacht Sales Inc., the official representative of the Miami/Fort Lauderdale FL headquarters.

Contact details

Email: andrey@shestakovyachtsales.com

Web: shestakovyachtsales.com/en/

Telephones

USA: +1(954)274-4435

Office hours

Monday – Saturday: **9:00 - 21:00** EDT

Sunday: **closed**

Address



Harbour Towne Marina, 850 NE 3rd St,
STE 213, Dania, FL 33004