

## SAPPHIRE — KNIGHT & CARVER



**Судостроитель:** KNIGHT & CARVER

**Длина общая:** 70' 0" (21.34m)

**Год постройки:** 2002

**Модель:** Моторная яхта

**Цена:** ЦЕНА ЯХТЫ ПО ЗАПРОСУ

**Местонахождение:** United States

Купить Sapphire — KNIGHT & CARVER а также выбрать подходящую вам яхту из нашего каталога яхт вам поможет опытный яхтенный брокер Андрей Шестаков. На сегодняшний день компания Shestakov Yacht Sales Inc. имеет большое количество яхт в собственном списке продаж, а также тесно сотрудничает со всеми крупными яхтенными производителями по всему миру.

Для того чтобы купить яхту Sapphire — KNIGHT & CARVER а также проконсультироваться по любому вопросу связанному с покупкой, продажей, чартером яхт позвоните по телефону **+7(918)465-66-44**.

# ОГЛАВЛЕНИЕ

ОГЛАВЛЕНИЕ	2
ХАРАКТЕРИСТИКИ	4
Обзор	4
Основная информация	4
Размеры	4
Скорость, вместимость и масса	4
Размещение	4
Корпус и палуба	4
Информация о двигателе	5
ПОДРОБНОЕ ОПИСАНИЕ	6
Introduction	6
Salon	6
Galley	7
Dinette	7
Master Stateroom	7
VIP Stateroom	8
Guest Stateroom, Port	8
Crew Quarters	8
Electronics	9
Deck Equipment	10
Engine Room	11
Laundry Room	12
Remarks	12
Исключения	12
Отказ от ответственности	12
ФОТОГРАФИИ	13
2002 Kinight Carver General Arrangement	20
КОНТАКТЫ	21

---

Контактная информация	21
Телефоны	21
Время работы	21
Адрес	21

---

# ХАРАКТЕРИСТИКИ

## Обзор

CAT Platinum Extended Warranty Program with additional years available.

## Основная информация

Тип судна: Моторная яхта

Модельный год: 2002

Год постройки: 2002

Страна: United States

## Размеры

Длина общая: 70' 0" (21.34m)

## Скорость, вместимость и масса

Чистый вес: 125 Pounds

Вместимость воды: 500 Gallons

Объем топливного бака: 2400 Gallons

## Размещение

Всего кают: 3

Спальные места: 6

Всего ком. состава: 4

Каюты экипажа: 1

Койки экипажа: 2

Спальных мест экипажа: 2

Комм. состав экипажа: 1

## Корпус и палуба

Материал корпуса: Fiberglass

---

## Информация о двигателе

---

**Двигатели:** 2

**Производитель:** Caterpillar

**Тип двигателя:** Inboard

**Тип топлива:** Diesel

# ПОДРОБНОЕ ОПИСАНИЕ

## Introduction

SAPPHIRE'S condition is excellent! A 2020 bow to stern refit has brought her into class with any late model vessel of this size. She's beautifully crafted in the USA, three-staterooms with en-suite heads plus large private crew accommodations aft. Most notably, the yacht has **Zero Hour** Cat's with the 2-year **CAT Platinum Extended Warranty Program with additional years available.**

The Knight and Carver Yacht Center in San Diego has a pacific coast following of high bulwarks walk-around side decks, super stability, range, speed and recent system upgrades. The yacht is a great family cruiser with the assistance of a captain or as an owner / operator.

Key Features:

- CAT 3412E, 1400 hp engines built to a commercial standard which includes jacket cooling, deep sump oil pits, and side inspection panels to allow for cost effective engine maintenance, plus a full zero-hour rebuild summer of 2020 (Platinum Warranty on Caterpillar 3412E with 50 hours)
- 2,400-Gallons fuel capacity
- 20'7" Beam providing interior volume equal to 80-foot yachts
- Naiad stabilizers
- Glass bridge navigation electronics with Nobeltec navigation and integrated Maretron system
- Updated AV system with receivers coupled with the KVH HD7
- Waste treatment plant
- (3) Guest staterooms plus crew cabin
- Watermaker
- (2) Generators
- Underwater lights
- Loads of storage for extended cruising
- Notably stable vessel to help those prone to sea sickness

## Salon

The main deck is accessed through one of three Freeman weathertight sliding doors. The carpentry is a stunning cherry interior with a satin finish. The salon has an open galley family friendly layout, and all the finest amenities possible.

- Large L-shaped settee with custom dust covers, has enough storage underneath for dry provisions and spare 5-blade propellers
- Bar with wine cooler, liquor and glass storage drawers
- Samsung HD smart TV on a lift behind pocket doors

- Yamaha surround sound receiver
- Boston Acoustics speakers in salon and pilothouse overhead
- HD satellite
- Fabrica carpeting with Sound Down carpet pad and runners
- Shades and valance with concealed indirect lighting above
- (2) Cruisair 16,000 BTU air conditioners

## Galley

---

- U-shaped galley with granite counters and backsplash
- Stainless-steel sink with In-Sink-Erator
- Wolf glass top 4-burner electric induction stove
- Exhaust fan vented to exterior
- Viking convection / microwave oven
- Sub-Zero refrigerator with two freezer drawers and icemaker
- Sub-Zero freezer under the buffet with two drawers
- Miele dishwasher
- Kitchen Aid trash compactor
- Generous storage in cabinets and drawers
- Cruisair 12,000 BTU air conditioner
- Spice drawer

## Dinette

---

- U-shaped dinette for six adults with storage underneath (ability to rotate two helm chairs for additional dining)
- Teak decks throughout galley and dinette / pilothouse
- (3) Large chart drawers and (2) file drawers beneath the dinette

## Master Stateroom

---

Owner / guest accommodations accessed down an illuminated companionway. The mattress is a custom pillowtop of the highest quality with large drawer storage underneath.

- (2) Cherry night stands
- Samsung 40" HD smart TV with HD satellite receiver
- Desk with chair and storage below and cabinet storage behind
- Sitting / reading chair
- Hanging locker to starboard
- Walk-in closet to port with access / exit to the engine room
- Bank of drawers to port with unique laundry bins underneath

- En-suite head with pocket door entry
- Large shower with seat, glass door, and port light
- Granite vanity top with Kohler sinks and satin nickel fixtures
- Mirrored overhead
- Separate toilet compartment with pocket door and Headhunter Royal Flush head
- (2) Cruisair 12,000 BTU air conditioning units, port and starboard
- (4) Port lights with shades

---

## VIP Stateroom

---

- Spacious stateroom located all the way forward with queen size berth, berth lifts electronically to reveal large storage beneath
- Plenty of storage in drawers, (2) hanging lockers, and cabinets
- En-suite head with large shower with glass door
- Sink counter, and generous storage in cabinets behind mirrors
- Mirrored overhead
- Cruisair 12,000 BTU air conditioner
- LED lighting, accent lighting
- Deck hatch to the foredeck with screen and sunshade
- Samsung 40" HD smart TV with HD satellite receiver

---

## Guest Stateroom, Port

---

- Twin single berths side-by-side with drawer storage underneath
- Cabinets and bookshelf on the outboard side
- Night stand in between berths with drawers underneath
- Hanging locker
- LED lighting and reading lights with dimmers
- En-suite head with shower and glass door
- Headhunter Royal Flush head
- Sink counter, and storage in cabinets behind mirrors
- Mirrored overhead
- Cruisair 12,000 BTU air conditioner
- Samsung 24" HD smart TV with satellite receiver

---

## Crew Quarters

---

The crew quarter aft is a good use of space and generous storage for extended cruises. Exterior entrance is through the Freeman watertight transom door, offering direct access to the exterior and the machinery space.



- Queen size berth with additional bunk
- Hanging locker
- Desk and stool
- Microwave
- Refrigerator
- Cruisair 12,000 BTU air conditioner
- Samsung 24" HD smart TV with HD satellite receiver
- VHF radio
- Spacious separate head and shower
- Large hatch over the shower for underway access
- Headhunter Royal Flush toilet
- Pocket door for head
- Foul weather gear locker
- Drawers and cabinet storage
- LED wall sconces
- LED lighting and dimmers
- Fresh headliners, wallpaper, and flooring

## Electronics

---

The electronics suite offers all the information you desire at a moment's glance. Whether you are enjoying the excellent visibility from either the upper or lower helm station, they are nearly identical in both equipment and layout. The powerful solid-state, custom-built Super Logics CP U services both the upper and lower helm. The lower helm is equipped with (3) 27" glass bridge screens. The upper helm is equipped with (2) 24" screens plus (1) 17" marine screen. All screens offer tremendous flexibility in customizing your preferences including engine room surveillance, dual charting, and complete vessel monitoring.

- Complete Maretron monitoring system which monitors the engines, tanks levels and ship's electrical system including depth sounder, speed sensor, weather station, and GPS
- Nobeltec navigation system
- Furuno NavNet radar
- Standard Horizon VHF
- ICOM RT-710 SSB
- Wireless keyboard
- Custom ship systems and alarm monitor
- Ritchie power damp illuminated compass
- Simrad AP autopilot
- Fog Mate automatic fog signal
- Seatel Wavecall satellite phone system with SAT speed compression software for email access
- KVH 6 system
- CPU runs Nema 2000

- Naiad Multi-Sea II stabilization system with fins rebuilt in 2019
- ACR searchlight

## Deck Equipment

---

**SAPPHIRE** has a traditional clean look, nicely designed to provide deck spaces that are free of cleats and other obstructions. Line handling is a breeze with her full walk-around side decks. She has an isinglass enclosure on the flybridge that makes enjoying the top deck possible in any weather.

- Bruce 110 lb. anchor on a custom bow roller
- 300' 7/16" chain
- Bow staff
- Maxwell 1500 windlass with remote and helm controls
- Danforth spare anchor
- Full bulwarks main deck with custom hawse pipes
- Opening bulwark doors for boarding port and starboard
- Mooring bitts for bow lines
- Generous line storage port and starboard with line hooks and lots of room for fenders
- Huge trunk cabin
- Custom storage for MarQuipt Tide Ride and boarding ladder
- Generous storage for cleaning supplies
- Built-in wet spot plus water softener
- Innovative bow seat sun pad with new cushions with weather cover and watertight storage beneath
- Full privacy / sun screens for windshields and side windows
- Freeman pilothouse doors port and starboard
- Freeman sliding aft salon door
- (6) Opening sliding windows
- Aft deck ladder to flybridge with teak steps
- Deck lights
- Nautical structures EZ 1500 davit with remote
- 8-Person life raft in a hard case
- (2) Stidd flybridge chairs and (1) Stidd loveseat
- Storage lockers on the flybridge with sink
- Staple rails on the swim platform
- Large custom swim ladder
- ACR search light with (2) controls
- Buell dual trumpet horns with expansion tank
- Hella stainless navigation lights
- Split U-shaped seating on the flybridge
- Aft deck seating with cushions
- 7' Mahogany high gloss table and covers on aft deck (accommodates 10 people)

- Large aft deck storage / shore power compartment (below deck)
- 100' of 100-amp shore power cord on Glendinning reel
- Scuba tank storage locker
- Fold-down TV from the hardtop on the flybridge

## Engine Room

---

The machinery space is guaranteed to impress even the most discerning yachtsman. In the summer of 2020, **SAPPHIRE** did a major a mechanical refit in the engine room, the main engines were removed from the boat and were remanufactured by Caterpillar to a zero-hour specification. During this process, they took the opportunity to update and detail the surrounding spaces, the attention to detail and quality of work performed is noticeable. The Caterpillar 3412E engine are a truly sought after, they have the over-sized deep oil pans, filed serviceable cylinder sleeve, and the jacket cooled aftercoolers. Easy access to all equipment for ease of serviceability makes it a pleasure to keep this vessel in tip-top shape.

- Zero-hour rebuild with Platinum Extended warranty program in effect on a Caterpillar 3412E 1400 hp main engines; deep sump oil pans and full engine room gauges
- Consumer version electronic technician
- Underwater exhaust system with bypass
- ZF BW190 2.03 to 1 gears ratio with trolling valves
- Twin disc EC200 electronic controls pilothouse and flybridge with wired remote
- Aquamet 22 3-1/2" propeller shafts
- Strong Seal shaft seals
- Westerbeke 32 kW generator and Northern Lights generator sets in sound shields and water separator silent exhaust system
- Naiad 302 stabilizers with Multi-Sea 2000 control
- New Wesmar twin-blade electric bow thruster
- Sea Recovery 1500 GPD watermaker
- Waste treatment system
- Fuel transfer system with Oberdorfer 240V / 1 hp pump 20+ gal per minute
- Racor 1000 fuel filters
- Oberdorfer 240 V 1 hp oil change pump with quick disconnect hydraulic fittings on all equipment
- (2) Sea-Fire FM 200 bottles
- Dry chemical and (2) CO2 hand-held fire extinguishers
- Headhunter Mach 5 fresh water pump
- Charles Industries ISO-boost transformer
- Trace 2500-watt inverter
- ProMariner battery chargers (recently replaced)
- Delta "T" ventilation system with replaced fans
- Surveillance cameras
- A/C switch panel

- Toolbox with tools included
- Air compressor
- Hynautic power steering with (2) pumps and (2) CYL
- Watertight Freeman door with viewing port to crews quarters
- Watertight Freeman door to master walk-in
- LED light fixtures (recently replaced)
- Spare Veem Star C5 blade props
- Spare engine and generator parts
- Parker Racor fuel polisher

## Laundry Room

---

- Miele stackable washer and dryer
- Generous shelf storage
- Folding door with light switch
- Linen storage in concealed drawers across the hall
- Storage below companionway stair

## Remarks

---

Rare opportunity to own one of the highest quality west coast custom motoryacht built at the highly respected Knight and Carver Yacht Center in San Diego. **SAPPHIRE** was designed by esteemed yacht designer, Tom Fexus. She was built to a quality standard rarely seen in a vessel its size, and its current owner has put the vessel through a comprehensive refit the 20'7" beam and open floor plan gives **SAPPHIRE** the feel of an 80' yacht. The long range capability, and quality systems are a hard to find combination.

## Исключения

---

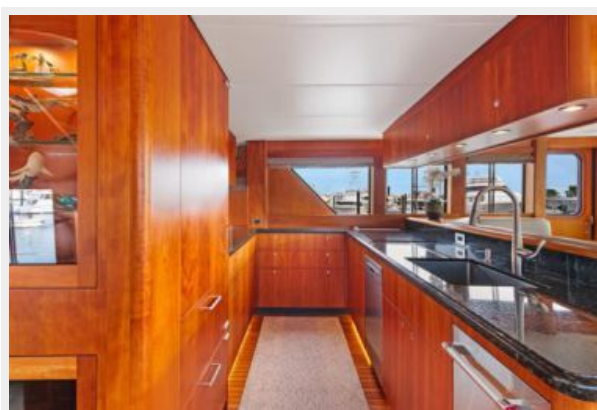
При продаже яхты исключаются личные вещи владельца.

## Отказ от ответственности

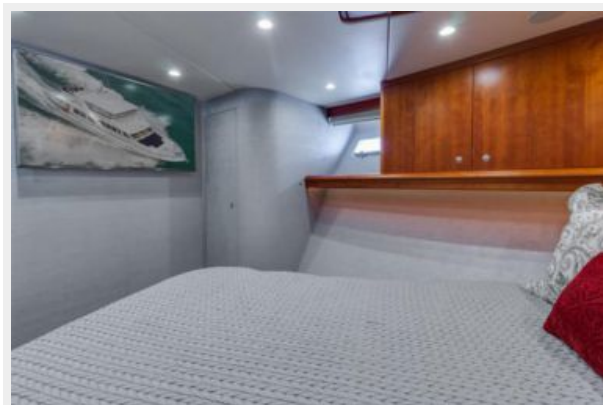
---

Компания предоставляет описание судна или яхты добросовестно, но не может гарантировать точность этой информации, а также не ручается за техническое состояние. Покупатель должен проинструктировать своих агентов или оценщиков исследовать представленную информацию более подробно, по собственному желанию. Продажа судна или яхты, изменение цены или снятие с продажи будет происходить без предварительного уведомления.

# ФОТОГРАФИИ

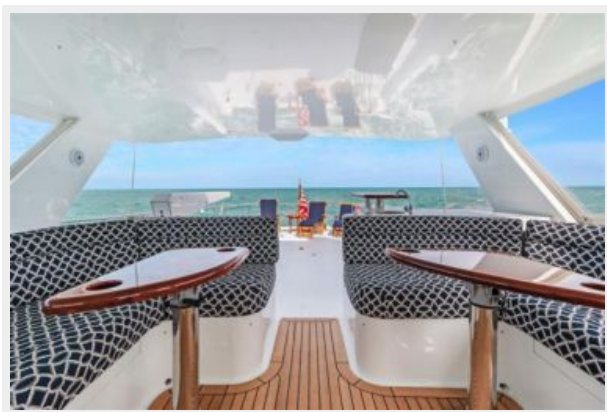


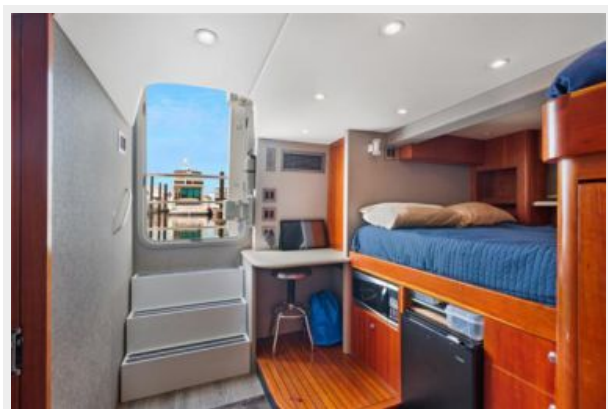
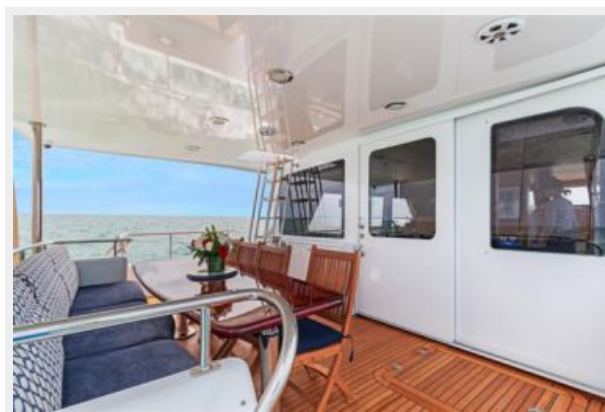


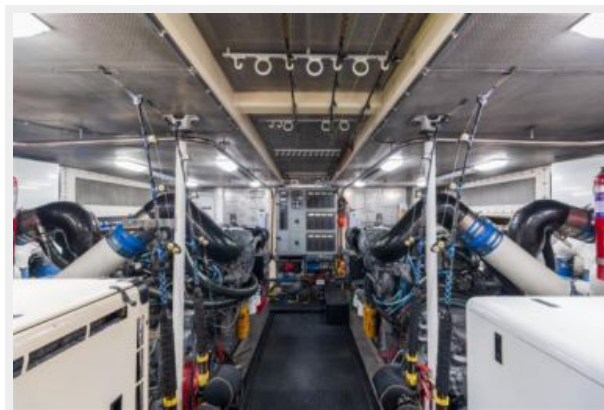












## 2002 Kinight Carver General Arrangement



# КОНТАКТЫ

---

Андрей Шестаков (Andrey Shestakov) – ведущий яхтенный брокер отдела продаж яхт и судов компании Shestakov Yacht Sales Inc. Официальный представитель Shestakov Yacht Sales Inc. для русскоговорящих клиентов в центральном офисе компании в Майами/Форт Лодердейл/Флорида/США.

## Контактная информация

---

Email: [andrey@shestakovyachtsales.com](mailto:andrey@shestakovyachtsales.com)

Web: [shestakovyachtsales.com](http://shestakovyachtsales.com)

## Телефоны

---

Краснодарский край: **+7(918)465-66-44**

США, Майами, Флорида: **+1(954)274-4435**

## Время работы

---

Понедельник – Суббота: **9:00 - 21:00**  
EDT

Воскресенье: **Закрито**

## Адрес

---



Harbour Towne Marina, 850 NE 3rd St,  
STE 213, Dania, FL 33004