

PEACE OF MIND — SEA RAY



Builder: SEA RAY

Year Built: 1989

Model: Cruising Yacht

Price: PRICE ON APPLICATION

Location: United States

LOA: 42' 0" (12.80m)

Beam: 13' 11" (4.24m)

Max Draft: 3' 3" (0.99m)

Our experienced yacht broker, Andrey Shestakov, will help you choose and buy a yacht that best suits your needs **Peace of Mind — SEA RAY** from our catalogue. Presently, at Shestakov Yacht Sales Inc., we have a wide variety of yachts available on our sale's list. We also work in close contact with all the big yacht manufacturers from all over the world.

If you would like to buy a yacht **Peace of Mind — SEA RAY** or would like help answering any questions concerning purchasing, selling or chartering a yacht, please call **+1(954)274-4435**

TABLE OF CONTENTS

TABLE OF CONTENTS	2
SPECIFICATIONS	6
Overview	6
Basic Information	6
Dimensions	6
Speed, Capacities and Weight	6
Accommodations	7
Hull and Deck Information	7
Engine Information	7
DETAILED INFORMATION	8
Overview	8
Exclusions	9
Disclaimer	9
PHOTOS	10
3	10
2	10
4	10
5	10
6	10
7	10
8	11
9	11
10	11
11	11
13	12
12	12
14	12
15	12

16	12
17	12
18	13
19	13
20	13
21	13
22	13
23	13
24	14
25	14
26	14
27	14
29	14
28	14
30	15
31	15
32	15
33	15
34	15
35	15
37	16
36	16
39	16
38	16
40	17
41	17
42	17
43	17
44	17

45	17
46	18
47	18
48	18
49	18
50	18
51	18
52	19
53	19
54	19
55	19
57	20
56	20
58	20
59	20
61	21
60	21
62	21
63	21
65	22
64	22
66	22
67	22
68	23
69	23
71	23
70	23
72	24
73	24

74	24
75	24
76	25
77	25
78	25
79	25
80	25
81	25
82	26
83	26
84	26
85	26
86	26
87	26
CONTACTS	27
Contact details	27
Telephones	27
Office hours	27
Address	27

SPECIFICATIONS

Overview

1989 420/440 Sea Ray Sundancer. This boat was Sea Rays demo boat for the early 1990s. It was fully loaded for the time. With an acceptable offer, the owner has agreed to do a full detail on the boat and have the bottom freshly painted at delivery. The boat has been kept under a covered boat slip for the last couple of years and really just needs a good cleaning to get it looking good. A recent insurance survey done in July 2019. This boat is solid. NO evidence of delamination or core damage. The Interior is in great shape for the age. The owner has the Original Sea Ray suitcases with all the original spare parts that were sent with the boat when originally purchased. This could be a great boat for someone that wants to have a liveaboard , cruise the great loop or just travel up and down the ICW. This boat is a rare find and needs to go to someone that will appreciate it.Call today for a private showing!!!

Basic Information

Category: Cruising Yacht

Sub Category: Express

Model Year: 1989

Year Built: 1989

Country: United States

Dimensions

LOA: 42' 0" (12.80m)

Beam: 13' 11" (4.24m)

Max Draft: 3' 3" (0.99m)

Speed, Capacities and Weight

Displacement: 20000 Pounds

Water Capacity: 100 Gallons

Holding Tank: 20 Gallons

Fuel Capacity: 400 Gallons

Accommodations

Total Berths: 3

Total Heads: 1

Hull and Deck Information

Hull Material: Fiberglass

Hull Configuration: Deep Vee

Engine Information

Engines: 2

Manufacturer: Caterpillar

Model: 3208

Engine Type: Inboard

Fuel Type: Diesel

DETAILED INFORMATION

Overview

Electronics

- Depthsounder
- Navigation center
- Autopilot
- Compass
- GPS
- VHF
- Radar
- TV set
- DVD player
- Radio
- CD player
- Cockpit speakers

Inside Equipment

- Electric bilge pump
- Battery charger
- Air conditioning
- Hot water
- Microwave oven
- Marine head
- Refrigerator

Electrical Equipment

- Shore power inlet
- Generator
- Electrical Circuit: 12V

Outside Equipment/Extras

- Cockpit cushions
- Cockpit table
- Swimming ladder
- Davits
- Electric windlass

Covers

- Bimini Top

Manufacturer Provided Description At 44 feet in length, the Sea Ray 440 Sundancer looks more like a cruise liner than a sport yacht. Then again, it has almost as much room. On deck is a spacious cockpit with ample bench seating for friends and family - perfect for relaxing in the sun. There's also a wetbar for refreshment on those hot summer days. Just a few steps below, more relief from the sun comes in the form of an inviting salon with a convertible nine-foot sofa and optional air conditioning. In the master stateroom, there's a queen-sized bed. And for the chef, the fully equipped galley has everything needed to fix a late night snack or a full course meal.

Exclusions

Owner's personal belongings.

Disclaimer

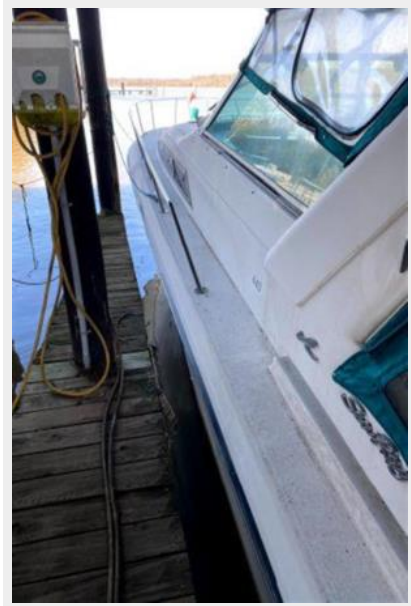
The Company offers the details of this vessel or yacht in good faith but cannot guarantee or warrant the accuracy of this information nor warrant the condition of the vessel. A buyer should instruct his representatives, agents, or his surveyors, to investigate such details as the buyer desires validated. This vessel or yacht is offered subject to prior sale, price change, or withdrawal without notice.

PHOTOS

2



3



4



5



6



7



8



9



10



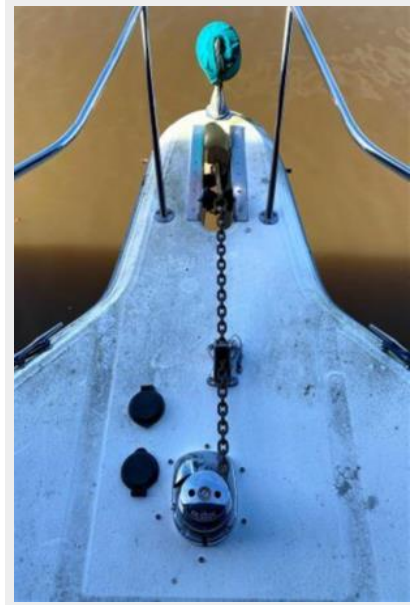
11



12



13



14



15



16



17



18



19



20



21



22



23



24



25



26



27



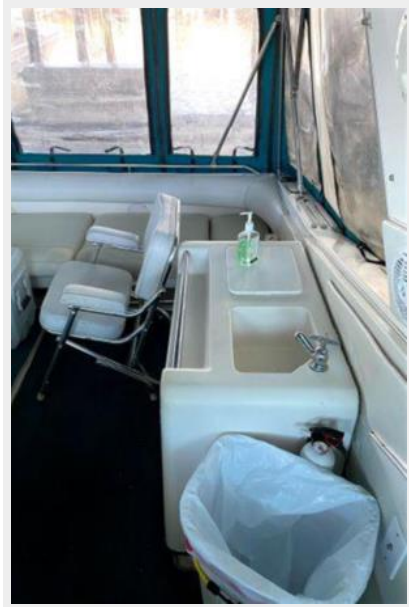
28



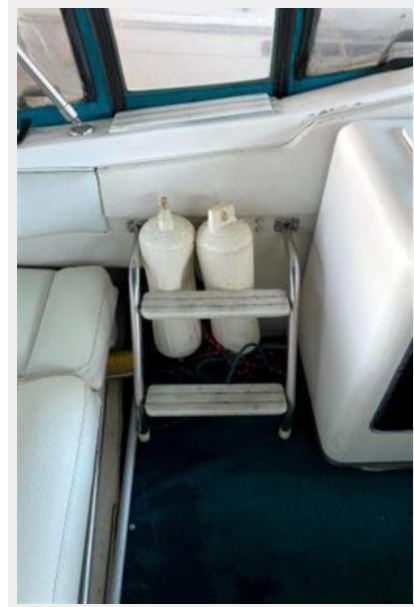
29



30



31



32



33



34



35



36



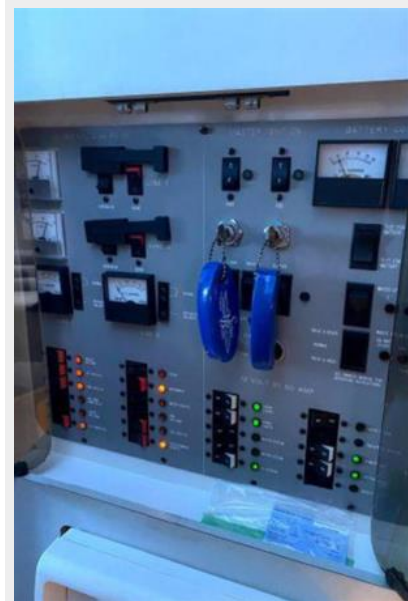
37



38



39



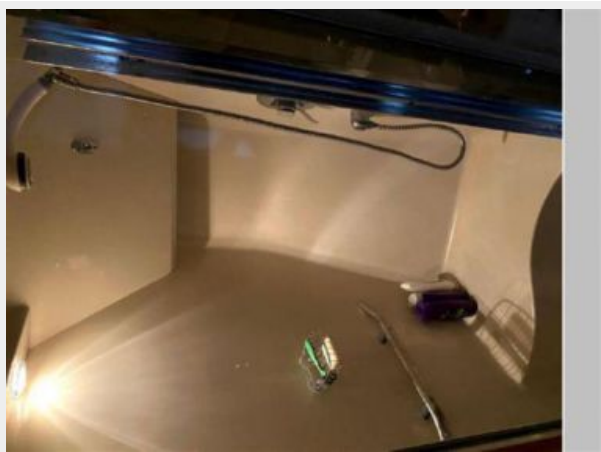
40



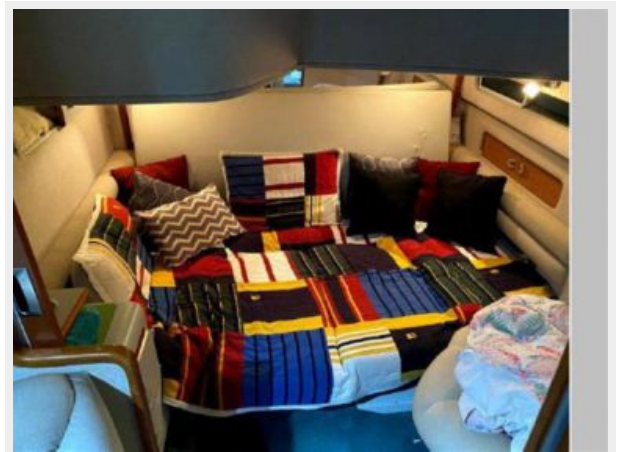
41



42



43



44



45



46



47



48



49



50



51



52



53



54



55



56



57



58



59



60



61



62



63



64



65



66



67



68



69



70



71



72



73



74



75



76



77



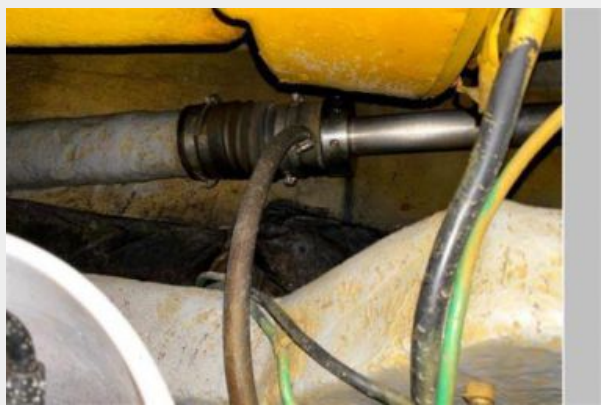
78



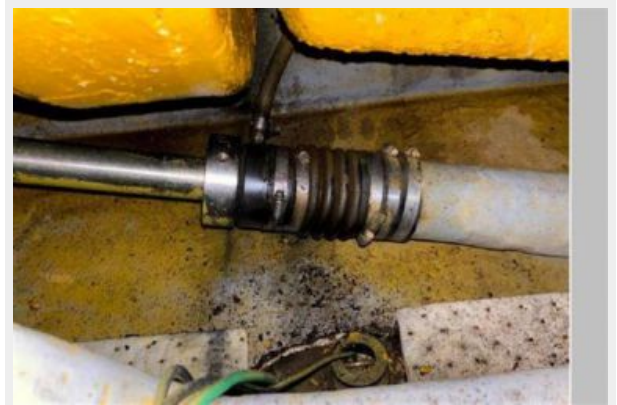
79



80



81



82



83



84



85



86



87



CONTACTS

Andrey Shestakov, leading yacht broker of the sales department of Shestakov Yacht Sales Inc. Shestakov Yacht Sales Inc., the official representative of the Miami/Fort Lauderdale FL headquarters.

Contact details

Email: andrey@shestakovyachtsales.com

Web: shestakovyachtsales.com/en/

Telephones

USA: +1(954)274-4435

Office hours

Monday – Saturday: **9:00 - 21:00** EDT

Sunday: **closed**

Address



Harbour Towne Marina, 850 NE 3rd St,
STE 213, Dania, FL 33004