

STATE OF GRACE — PERINI NAVI



Builder: PERINI NAVI

Year Built: 2013

Model: Sloop

Price: PRICE ON APPLICATION

Location: Italy

LOA: 129' 4" (39.40m)

Beam: 30' 0" (9.13m)

Min Draft: 11' 6" (3.50m)

Max Draft: 29' 11" (9.10m)

Cruise Speed: 10.5 Kts. (12 MPH)

Max Speed: 14 Kts. (16 MPH)

Our experienced yacht broker, Andrey Shestakov, will help you choose and buy a yacht that best suits your needs **STATE OF GRACE — PERINI NAVI** from our catalogue. Presently, at Shestakov Yacht Sales Inc., we have a wide variety of yachts available on our sale's list. We also work in close contact with all the big yacht manufacturers from all over the world.

If you would like to buy a yacht **STATE OF GRACE — PERINI NAVI** or would like help answering any questions concerning purchasing, selling or chartering a yacht, please call **+1(954)274-4435**

TABLE OF CONTENTS

TABLE OF CONTENTS	2
SPECIFICATIONS	3
Overview	3
Basic Information	3
Dimensions	4
Speed, Capacities and Weight	4
Accommodations	4
Hull and Deck Information	4
Engine Information	4
DETAILED INFORMATION	5
DETAILED DESCRIPTION	5
Exclusions	16
Disclaimer	16
PHOTOS	17
State of Grace Sail Plan	24
State of Grace GA	24
CONTACTS	25
Contact details	25
Telephones	25
Office hours	25
Address	25

SPECIFICATIONS

Overview

The 39.40m 2013 Perini Navi sailing yacht STATE OF GRACE, with her four-cabin layout and quality interior finish, this sailing sloop offers excellent charter potential.

STATE OF GRACE provides excellent sailing performance thanks to her Ron Holland naval architecture and Southern Spars carbon mast, boom and ECsix rigging package.

During her 2019/2020 winter refit, STATE OF GRACE had a top end overhaul of her main engine, two new generators were fitted,

and her rigging was checked and polished. In July 2020, she was given a new blade jib sail and 90% of her teak decks were recaulked. STATE OF GRACE can accommodate a maximum of nine guests across four cabins, including a full-beam Owner's suite, two queen-size double cabins and a convertible twin with an extra Pullman berth. STATE OF GRACE boasts Perini Navi's typical ease of access to and from the water via the large aft swim platform, which comes courtesy of a fold-down transom and a side boarding ladder. Assisted by a CAT C18 670hp/500 kw engine, STATE OF GRACE has a top speed of 14 knots and cruises at 9 knots. **Key Features**

- Ron Holland Naval Architecture
- 4 cabin layout
- Unusually large and comfortable cockpit
- Aft swim platform
- 2 x new generators recently installed; top end overhaul on main engine
- Full rig service
- Highly rated charter yacht

Basic Information

Category: Sloop

Model Year: 2013

Year Built: 2013

Refit Year: 2020

Country: Italy

Dimensions

LOA: 129' 4" (39.40m)

LWL: 111' 11" (34.10m)

Beam: 30' 0" (9.13m)

Min Draft: 11' 6" (3.50m)

Max Draft: 29' 11" (9.10m)

Speed, Capacities and Weight

Cruise Speed: 10.5 Kts. (12 MPH)

Cruise Speed Range: 3000

Max Speed: 14 Kts. (16 MPH)

Gross Tonnage: 254 Pounds

Water Capacity: 1320.86026 Gallons

Fuel Capacity: 3804.0775488 Gallons

Accommodations

Total Cabins: 4

Sleeps: 9

Crew Cabin: 3

Crew Sleeps: 6

Hull and Deck Information

Hull Material: Aluminum

Deck Material: Teak

Hull Designer: Ron Holland Design / Perini Navi

Exterior Designer: Perini Navi

Interior Designer: Perini Navi

Engine Information

Engines: 1

Manufacturer: CAT

Model: C18

Engine Type: Inboard

DETAILED INFORMATION

DETAILED DESCRIPTION

```
#edmiston-espec { font-family: 'Helvetica Neue LT Std', 'Sans'; font-weight: 200; font-style:
normal; text-align: justify; text-justify: inter-word; line-height: 1.5em; color: #444; } #edmiston-
espec table { border-spacing: 0px; border-collapse: collapse; } #edmiston-espec td { text-align:
left; vertical-align: top; padding: 0px; margin: 0px; line-height: 1.5em; } #edmiston-espec th { text-
align: left; vertical-align: top; padding: 0px; margin: 0px; width: 5cm; } #edmiston-espec h1 { font-
family: 'Times New Roman','Serif'; color: #DB001E; } #edmiston-espec h2 { font-family: 'Times
New Roman','Serif'; color: #DB001E; } #edmiston-espec h3 { font-family: 'Times New
Roman','Serif'; color: #222; } #edmiston-espec ul { list-style: none; margin: 0; padding: 0 0 0 20px;
} #edmiston-espec li.bullet { list-style: disc; }
```

1. MAIN CHARACTERISTICS

TYPE	◦ Sloop Sailing Yacht
HULL NO.	◦ C.2180
BUILDER	◦ Perini Navi
NAVAL ARCHITECT	◦ Ron Holland Design / Perini Navi
EXTERIOR DESIGN	◦ Perini Navi
INTERIOR DESIGN	◦ Perini Navi
YEAR	◦ 2013
REFIT	◦ 2020
CLASSIFICATION	◦ ABS: MCA + A1, Commercial Yachting Service, Malta Cross AMS, MCA LY2 Short Range
CONSTRUCTION	◦ Aluminium Hull & Superstructure, Teak Decks
KEEL CONFIGURATION	◦ Centre board with fixed ballast of 17 tons
CREW	◦ 6
FLAG	◦ Isle of Man
ENGINE	◦ 1 x 500kW / 670Hp CAT C18
GT	◦ 254
DISPLACEMENT	◦ 220 max

2. DIMENSIONS

LOA	◦ 39.40m /129'3"
LWL	◦ 34.10m /111'
BEAM	◦ 9.13m / 31'

- DRAFT**
- 9.10m / 29' 10" max
 - 3.50m / 11'6" min

3. SPEED & RANGE UNDER POWER

- MAXIMUM SPEED** ○ 14 knots
- CRUISING SPEED** ○ 10.5 knots
- ECONOMICAL SPEED** ○ 7 knots
- RANGE** ○ 3,000nm @ 7 knots

4. CAPACITIES

- ACCOMMODATION**
- 8 + 1 x Guests in 4 cabins
 - (1 x Master, 2 x Double, 1 x Twin with Pullman)
- CREW**
- 6 x Crew in 3 cabins
- FUEL**
- 14,400 litres / 3,800 US gallons
- FRESH WATER**
- 5,000 litres / 1,100 US gallons
- LUBE OIL**
- 486 litres / 128 US gallons
- DIRTY OIL TANK**
- 430 litres / 113 US gallons
- GREY / BLACK WATER**
- 1,324 litres / 350 US gallons
- BILGE WATER TANK**
- 916 litres / 242 US gallons

5. ACCOMMODATION

STATE OF GRACE has a split-level saloon area which offers increased headroom and creates two social areas on the main and lower decks. Her full beam Master Suite offers a large Turkish Hammam steam shower, "Therasage" massage & shiatsu machine and fully equipped gym area with Technogym cross trainer, rowing machine, free weights and exercise bars. Two Queen size double cabins and a further convertible twin cabin with Pullman create accommodation for up to 9 guests in total.

Easy access to the sea, tenders and an extensive array of toys comes courtesy of a fold down transom revealing a large aft swim platform. An intelligent layout with ample relaxation, dining and watersports areas matched with optimized performance make STATE OF GRACE a spacious, comfortable and exciting yacht for any owner.

- Total deck area: 258 m² / 2,777 ft²
- Cockpit area: 32 m² / 344 ft²
- Saloon & wheelhouse

DIMENSIONS

area: 73 m2
/ 786 ft2

- Total owner & guest cabin area: 83 m2 / 893 ft2
- Total crew area: 54 m2 / 581 ft2
- Head room: 205cm in all guest areas

DINING ROOM

- Dining table for 8 x guests
- 8 x Dining chairs
- 2 x Double couches
- 2 x Armchairs
- 1 x Bench for 4 x guests
- 3 x Coffee tables
- 2 x Sub-zero wine cellars, total 40 x bottles
- Concealed TV
- 1 x 6-seater sofa
- 1 x Carbon designer chair
- 2 x Chairs
- Coffee table
- Concealed TV
- Day head

UPPER SALOON

MASTER SUITE

- portside
- forward
- o 1 x King bed
- o En suite with shower
- o Sanitary
- o 2 x Night tables
- o TV flat screen
- o Large bulkhead wardrobe with hanging lockers
- o and drawer
- o Office desk with one chair
- o 1 x Pull-out massage bed
- o Digital safe
- o Rowing machine “concept 2 Model E”
- o Cross trainer “synchro Technogym 700iE
- o 1 x Queen bed
- o En-suite shower
- o 1 x Pullman
- o Under the bed storage
- o Night table with drawer

OWNER’S GYM**AFT STARBOARD CABIN**

FWD STARBOARD CABIN

- 1 x wardrobe, drawers, shelves and mirror
- TV LCD
- 1 x Queen convertible to Twin bed
- En suite shower
- 1 x Pullman
- Under bed storage
- Night table with drawer
- 1 x wardrobe, drawers, shelves and mirror
- TV LCD
- 1 x Queen bed
- En suite shower
- Under the bed storage
- 2 x Night table with drawer
- 1 x Wardrobe, drawers and shelves and mirror
- TV LCD
- U-shaped dining table and seating
- Dishwasher
- Small fridge
- 1 x Double

FORWARD PORTSIDE CABIN

CREW MESS

CAPTAIN'S CABINS

- bed
- o 1 x Single bed
- o En suite shower
- o Drawers under the bed
- o 1 x Wardrobe, drawers and shelves and mirror
- o TV LCD
- o Digital safe
- o 2 x Bunk bedded cabins
- o Each with shower and toilet
- o Each with Stereo and DVD player
- o Each with clothes hanging wardrobe

CREW CABINS

6. MECHANICAL EQUIPMENT

- | | |
|------------------------------|--|
| ENGINE | o 1 x CAT C18 670Hp / 500 kW @ 2,100 rpm |
| GEARBOXES | o Hundested CPG- 32 |
| ELASTIC COUPLING | o Vulkan |
| STEERING SYSTEM | o Marsili Electro-hydraulic |
| PROPELLER & SHAFT | o Hundested 4-blade CP in NI-AOL Bronze S/S shaft, brake on water lubricated bushing |
| THRUSTERS | o 2 x 75Hp retractable Hundested (hydraulics powered via PTO on gearbox) |
| GENERATORS | o 2 x 68 kW Caterpillar C4.4 380V 50Hz, 1,500 rpm |
| EMERGENCY GENERATORS | o 1 x 4kW 3,000rpm 380V 50Hz |
| SHORE POWER | o Asea 63kVA frequency converter, seamless transfer capability |

OUTPUT	<ul style="list-style-type: none"> ○ 380V/ 50Hz 3-Phase ○ 220V / 50Hz single phase - lighting & low power machinery ○ 24V DC - emergency lighting, electronics instruments & alarms
BATTERIES	<ul style="list-style-type: none"> ○ 1 x Gel 24V 400A Services ○ 1 x Gel 24v 400A Emergency lights ○ 1 x Gel 24v 200A Main engine starting ○ 2 x Gel 24v 150A Generator starting ○ 1 x Gel 12v 100A Emergency Generator starting
FIRE & EMERGENCY PUMP	<ul style="list-style-type: none"> ○ 2 x 380 CV Gianceschi 470 l/m bilge & fire pump ○ 1 x Diesel bilge & fire pump
BILGE PUMP	<ul style="list-style-type: none"> ○ 8 x 24V Automatic
AIR CONDITIONING	<ul style="list-style-type: none"> ○ Condaria
BOILERS	<ul style="list-style-type: none"> ○ 2 x 100 l with 2 x heating 2.5kW each
WATERMAKER	<ul style="list-style-type: none"> ○ 2 x Idromar 125 lph
SEWAGE SYSTEM	<ul style="list-style-type: none"> ○ Selmar (17-pax rated)
OILY WATER SEPARATOR	<ul style="list-style-type: none"> ○ Filtering system
7. SAILS & RIGGING	
SAILS	<ul style="list-style-type: none"> ○ Systems designed & built by Perini Navi, handled semi-automatically ○ Operation via 1 x console or a joy stick ○ Monitoring system allows continuing verification of sails systems status
SAIL DIMENSIONS	<ul style="list-style-type: none"> ○ Total sail area upwind: 893 m² / 9,612 ft² ○ Main sail: 378 m² / 4,069 ft² ○ Reacher: 515 m² / 5,543 ft² ○ Jib: 301 m² / 3,240 ft² ○ MPS: 900 m² / 9,688 ft²
SAILS SET	<ul style="list-style-type: none"> ○ Doyle full batten main with 2 x reefs: 370 m² (2016) ○ Doyle tri-radial blade with 2 x reefs: 300 m² (2020) ○ Doyle tri radial carbon spectra reacher: 510 m² (2016) ○ Doyle Asymetric (A2) with sock & bucket: 900 m² ○ North - small delivery Mainsail (2020)
MAST & RIGGING	<ul style="list-style-type: none"> ○ Southern Spars High Modulus carbon mast & boom ○ Height above DWL: 51m (170 ft) ○ Rigging (Standing): EC6 carbon fibre ○ Carbon fibre mainsail furling boom ○ Bamar furlers for jibs and reacher ○ New generation Perini Navi captive reel winches

- Rondal carbon hatches
- Carbon Fibre tender lifting pole with captive winch
- Navtec double acting hydraulic vang
- Navtec hydraulic backstay

8. NAVIGATION EQUIPMENT

AUTOPILOT	<ul style="list-style-type: none"> ○ 1 x A&T GPD Pilot Display (wheelhouse) ○ 1 x B & G H3000 GPD Pilot Display (external) ○ 1 x B & G Rudder (steering) ○ Hatteland-Mini CPU w/pa 2.4G Processor with 17' monitor (wheelhouse)
RADAR / CHART PLOTTER	<ul style="list-style-type: none"> ○ Furuno Blackbox Navnet 3D SXGA ○ Chartplotter (wheelhouse) ○ Furuno Black Box Navnet 3D SXGA Colour ○ Chartplotter (external) ○ 12.9" iPad Pro with Navionics back up
HORN	<ul style="list-style-type: none"> ○ Tyfon MKT 75/660
L.R.I.T	<ul style="list-style-type: none"> ○ 1 x Sailor TT 3000 LT
NAVTEX SYSTEM	<ul style="list-style-type: none"> ○ 1 x Furuno LCD
AIS	<ul style="list-style-type: none"> ○ 1 x Furuno FA 150 ○ 1 x Sailor SART 2
FLEET BROAD BAND	<ul style="list-style-type: none"> ○ 1 x VSat
EPIRB	<ul style="list-style-type: none"> ○ 2 x Sailor SGE406
COMPASSES	<ul style="list-style-type: none"> ○ B&G H3000 Halcyon Gyro ○ Furuno rate compensated heading sensor ○ Hein & Oetting Venus Magnetic compass
DEPTH SOUNDER	<ul style="list-style-type: none"> ○ Furuno Network Sounder, Navnet Fishfinder
GPS	<ul style="list-style-type: none"> ○ Furuno GP150
WIND INSTRUMENTS	<ul style="list-style-type: none"> ○ 1 x B &G 3000 Hercules Pack system complete with ○ 1 x Heel, 1 x Standard 213 masthead, 1 x Depth, ○ 1 x Paddle wheel ○ 1 x Analogue wind direction ○ 1 x Analogue wind speed indicator
WHEELHOUSE	<ul style="list-style-type: none"> ○ 1 x Analogue magnified instrument ○ 1 x Analogue boat speed instrument ○ 2 x GFDs
EXTERNAL	<ul style="list-style-type: none"> ○ 4 x B&G Triton multi-display (2020) ○ 1 x B&G GFDs ○ 2 x Jumbo 20.20
CREW AREA	<ul style="list-style-type: none"> ○ 1 x GFD, crew mess ○ 1 x GFD in captain's cabin

9. COMMUNICATION EQUIPMENT

GMDSS RADIO

- 1 x Sailor TT 3000EB
- 2 x Sailor SP3520 portable VHF
- 2 x Sailor 6215 & 6222 DSC VHF (wheelhouse)
- 1 x sailor C4901 Control Handset (wheelhouse)

VHF RADIO TELEPHONE

- 1 x Sailor C4901 Control Handset VHF A1 (external)
- 1 x Sailor C4901 Control handset/speaker (crew mess)

INTERNET CONNECTIONS

- 2 x Sailor 250 Broad Band
- 1 x Cobham 800 Antenna
- 1 x Pepwave Cell terminal

TELEPHONE EXCHANGE

- Panasonic KX-TDA 100
- 9 x KX-DT343 telephone unit
- 8 x KX-TDA0142 4 channel DECT Base Station
- 6 x KX-TCA256 DECT Handset
- 1 x Watertight stainless steel-cased door phone for use either side at side boarding or gangway boarding

ETHERNET LAN NETWORK

- Dell PE860 Power Edge Server Computer

10. DECK EQUIPMENT**ANCHOR WINDLASS SYSTEM**

- Nani with 2 x hydraulic hinging anchor bowsprits

AFT WARPING CAPSTANS

- Harken 1120 3-speed

ANCHORS

- 2 x Stainless steel CQR 182 Kg 16mm chains

PASSERELLE

- Pincraft

BOARDING LADDER STBD

- Pincraft

11. ENTERTAINMENT EQUIPMENT**AV SYSTEM**

- Audio visual system based around Control 4 Processors & remote controls

MAIN SALOON

- Panasonic 42' Plasma display TV
- 6000 Kaleidescape system
- Samsung blue ray BP-P1500 disc player
- Airplay control with Chromecast system

LOWER SALOON

- Panasonic 42' Plasma display TV
- 6000 Kaleidescape system
- Airplay

OWNER'S CABIN

- Panasonic 42' Plasma TV
- 6000 Kaleidescape system
- Samsung blue ray BP-P1500 disc player
- Airplay control & Apple TV

OWNER'S STUDY

- Speakers & Creston wall mount LCD controller

GYM STARBOARD CABIN	<ul style="list-style-type: none"> ○ 15" LCD TV with speakers ○ Sharp 20" Aquos LCD TV ○ 300 Kaleidescape system
PORTSIDE CABIN	<ul style="list-style-type: none"> ○ Sharp 32" Aquos LCD TV ○ 300 Kaleidescape system ○ Bluetooth & Airplay
STARBOARD FWD CABIN	<ul style="list-style-type: none"> ○ Sharp 32" Aquos LCD TV ○ 300 Kaleidescape system ○ Bluetooth & Airplay
CREW MESS	<ul style="list-style-type: none"> ○ Philips 15" LCD ○ Kaleidescape
CAPTAIN'S CABIN	<ul style="list-style-type: none"> ○ Philips 15" LCD
CREW CABINS	<ul style="list-style-type: none"> ○ Stereo & speakers
SATELLITE TV	<ul style="list-style-type: none"> ○ Seatel Cobham VSTA (new 2016) with independent receivers for the Master cabin, upper & lower salon
BOW SUNPAD	<ul style="list-style-type: none"> ○ Control 4 Deck tablet ○ 2 x Speakers Promar
AFT COCKPIT	<ul style="list-style-type: none"> ○ 1 x Airplay control with Chromecast system ○ Bluetooth through the Upper salon ○ 2 x Promar speakers ○ Panasonic 40" TV / LCD
HELM POD	<ul style="list-style-type: none"> ○ 2 x Promar speakers
12. GALLEY & LAUNDRY EQUIPMENT	
GALLEY	<ul style="list-style-type: none"> ○ 1 x Industrial 6-burner stove ○ 1 x Miele oven M399B ○ 1 x Miele Jubilee SC dishwasher ○ 1 x Elitech Fridge ○ 1 x ISE macerator ○ 1 x Espresso machine ○ Range hood variable speed stainless steel ○ 2 x Microwave ovens ○ 1 x Custom galley 1,300 litres ○ 1 x Deep freezer
REFRIGERATION / FREEZER	<ul style="list-style-type: none"> ○ 1 x Custom aft cockpit 150 litres ○ 1 x Custom bilge storage 1,000 litres ○ 1 x Garbage locker in forepeak ○ 2 x 6kg Professional Miele washing machines ○ 2 x 6kg Marine driers

LAUNDRY

- 1 x World hinged iron board
- 1 x Flatwork ironer
- Laundry connected to crew mess
- 1 x Fridge
- Trash compactor
- Sink station

CREW MESS

- 1 x Dishwasher
- VHF Remote
- CCTV screen
- Flush mounted access to under floor deep freeze

13. SECURITY & SAFETY EQUIPMENT**SAFETY**

- Compliant with MCA rules for safety equipment:
- 2 x Life-rafts (8-people)
- 1 x Life raft (6-people)
- Life rings
- ABS and MCA approved life jackets

FIRE FIGHTING

- FM 200 plant
- Fire extinguisher
- Fire crew Equipment

SECURITY

- CCTV2:
- Speed Dome PTZ (spreaders)
- 1 x Speed Dome PTZ (engine room)
- Both connected to 17' LCD in Wheelhouse & crew mess

14. TENDERS & WATERSPORTS EQUIPMENT**TENDER**

- 1 x 5.50m Pascoe with inboard Yanmar 150Hp RIB (refitted 2020)
- 2 x Stand-up paddleboards

WATERSPORTS

- Water skis (adult & children)
- Inflatable Yacht Pool

**DIVING /
FISHING**

- Snorkelling gear
- Full deep-sea fishing equipment (fighting chair, multiple rod, reels & tackle)

15. REFIT NOTES

- WINTER 2019-2020
 - Main engine top end overhaul
 - 2 x New Generators
 - Rig out, checked & polished
 - Jib/Blade sail new July 2020
 - Tanks pumped out, pressure washed & cleaned October 2020
 - Teak decks 90% re-caulked July 2020

16. COMMENTS

Finalist for six industry awards, STATE OF GRACE is the result of a winning collaboration

with Ron Holland Design and the bespoke tailoring of Perini Navi to provide a high-performance world cruising contemporary sloop for an experienced yachtsman driven by cutting-edge sailing technology. The lifting keel allows the yacht to get much closer to shore in anchorages compared to other similar sized yachts.

Her aluminium hull and superstructure give a displacement of up to 220 tons, new generation Perini Navi captive reel winches hold 12 tons, rewinding 35 metres of sheets per minute. She comes complete with Southern Spars carbon Hybrid Modulus mast and boom, EC6+ carbon fibre rigging controlled from the trademark Perini hemi-spherical helm pod (all controllable by one person) and offers exceptional manoeuvrability.

STATE OF GRACE also comes with an outstanding worldwide reputation as a successful charter yacht, offering a new owner an established revenue stream if desired.

o KEY FEATURES

- Powerful sailing yacht
- Full beam Master Suite with full en suite and direct access to Gym room
- Accommodating 6 guests in 2 Queen size double cabins and 1 further convertible twin cabin with Pullman bed for a total capacity of 9 guests
- Fully equipped gym area with Technogym cross trainer, rowing machine, free weights and exercise bars
- Perini famed large and comfortable access to the sea via side retractable boarding ladder or large stern platform
- Tenders and an extensive array of toys come courtesy of a fold down transom revealing a large aft swim platform

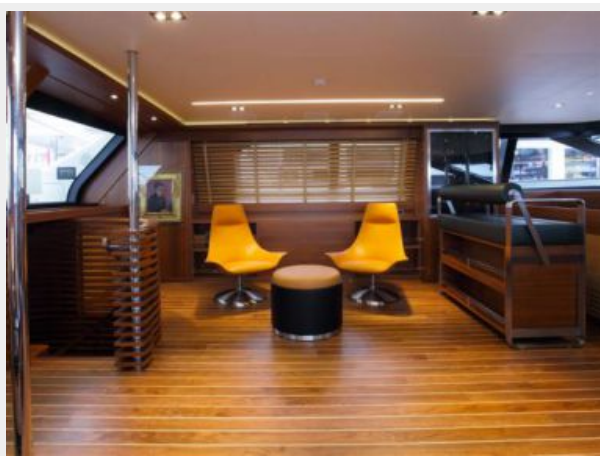
Exclusions

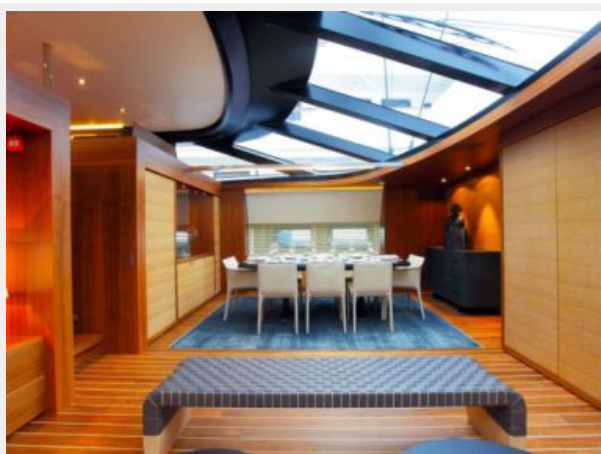
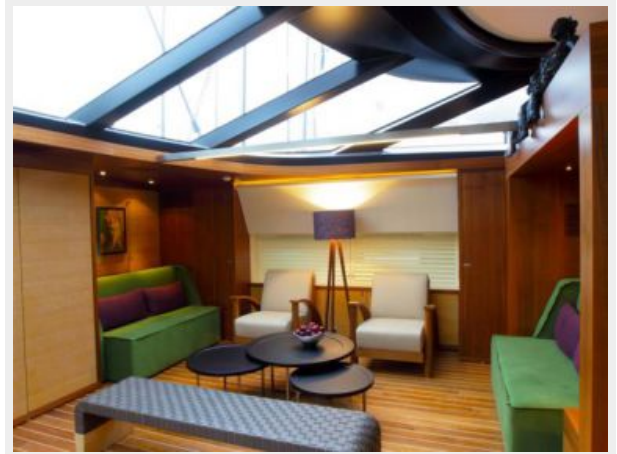
Owner's personal belongings.

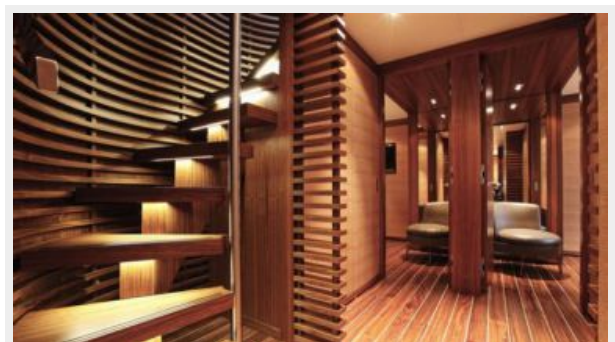
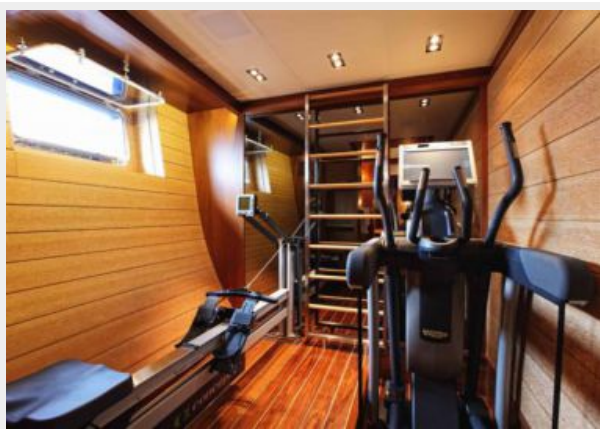
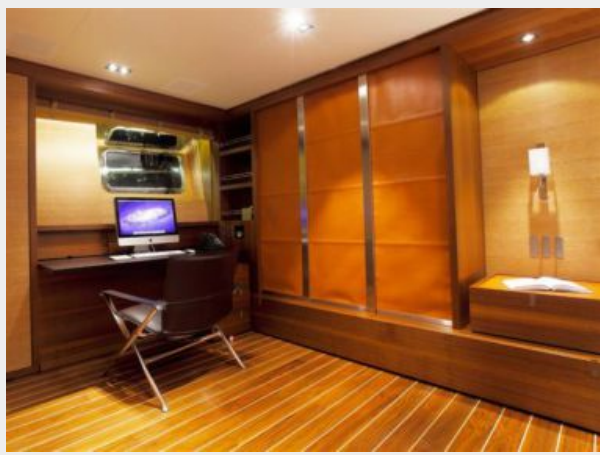
Disclaimer

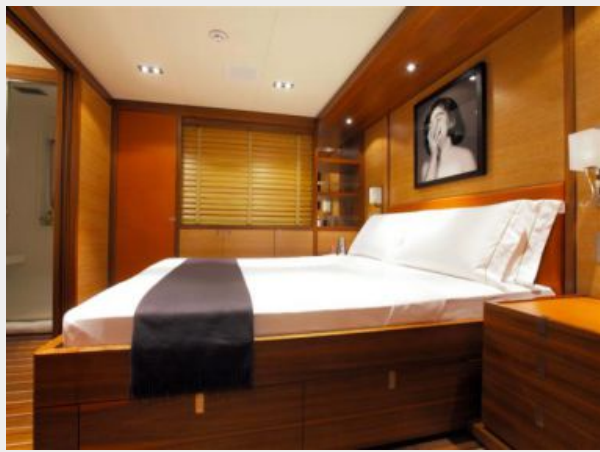
The Company offers the details of this vessel or yacht in good faith but cannot guarantee or warrant the accuracy of this information nor warrant the condition of the vessel. A buyer should instruct his representatives, agents, or his surveyors, to investigate such details as the buyer desires validated. This vessel or yacht is offered subject to prior sale, price change, or withdrawal without notice.

PHOTOS

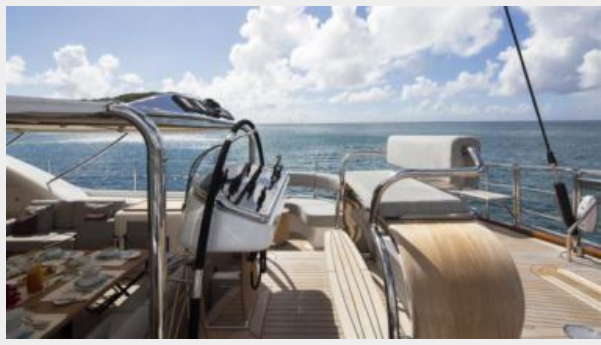












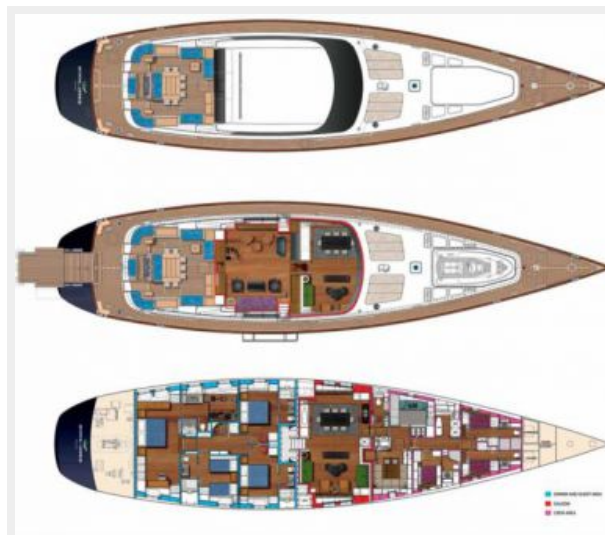




State of Grace Sail Plan



State of Grace GA



CONTACTS

Andrey Shestakov, leading yacht broker of the sales department of Shestakov Yacht Sales Inc. Shestakov Yacht Sales Inc., the official representative of the Miami/Fort Lauderdale FL headquarters.

Contact details

Email: andrey@shestakovyachtsales.com

Web: shestakovyachtsales.com/en/

Telephones

USA: +1(954)274-4435

Office hours

Monday – Saturday: **9:00 - 21:00** EDT

Sunday: **closed**

Address



Harbour Towne Marina, 850 NE 3rd St,
STE 213, Dania, FL 33004