

## STATE OF GRACE — PERINI NAVI



**Судостроитель:** [PERINI NAVI](#)

**Год постройки:** 2013

**Модель:** Sloop

**Цена:** **ЦЕНА ЯХТЫ ПО ЗАПРОСУ**

**Местонахождение:** Italy

**Длина общая:** 129' 4" (39.40m)

**Ширина:** 30' 0" (9.13m)

**Мин. осадка:** 11' 6" (3.50m)

**Макс. осадка:** 29' 11" (9.10m)

**Крейс. скорость:** 10.5 Kts. (12 MPH)

**Макс. скорость:** 14 Kts. (16 MPH)

Купить **STATE OF GRACE — PERINI NAVI** а также выбрать подходящую вам яхту из нашего каталога яхт вам поможет опытный яхтенный брокер Андрей Шестаков. На сегодняшний день компания **Shestakov Yacht Sales Inc.** имеет большое количество яхт в собственном списке продаж, а также тесно сотрудничает со всеми крупными яхтенными производителями по всему миру.

Для того чтобы купить яхту **STATE OF GRACE — PERINI NAVI** а также проконсультироваться по любому вопросу связанному с покупкой, продажей, чартером яхт позвоните по телефону **+7(918)465-66-44**.

# ОГЛАВЛЕНИЕ

ОГЛАВЛЕНИЕ	2
ХАРАКТЕРИСТИКИ	3
Обзор	3
Основная информация	3
Размеры	4
Скорость, вместимость и масса	4
Размещение	4
Корпус и палуба	4
Информация о двигателе	4
ПОДРОБНОЕ ОПИСАНИЕ	5
DETAILED DESCRIPTION	5
Исключения	16
Отказ от ответственности	16
ФОТОГРАФИИ	17
State of Grace Sail Plan	24
State of Grace GA	24
КОНТАКТЫ	25
Контактная информация	25
Телефоны	25
Время работы	25
Адрес	25

# ХАРАКТЕРИСТИКИ

## Обзор

The 39.40m 2013 Perini Navi sailing yacht STATE OF GRACE, with her four-cabin layout and quality interior finish, this sailing sloop offers excellent charter potential.

STATE OF GRACE provides excellent sailing performance thanks to her Ron Holland naval architecture and Southern Spars carbon mast, boom and ECsix rigging package.

During her 2019/2020 winter refit, STATE OF GRACE had a top end overhaul of her main engine, two new generators were fitted,

and her rigging was checked and polished. In July 2020, she was given a new blade jib sail and 90% of her teak decks were recaulked. STATE OF GRACE can accommodate a maximum of nine guests across four cabins, including a full-beam Owner's suite, two queen-size double cabins and a convertible twin with an extra Pullman berth. STATE OF GRACE boasts Perini Navi's typical ease of access to and from the water via the large aft swim platform, which comes courtesy of a fold-down transom and a side boarding ladder. Assisted by a CAT C18 670hp/500 kw engine, STATE OF GRACE has a top speed of 14 knots and cruises at 9 knots. **Key Features**

- Ron Holland Naval Architecture
- 4 cabin layout
- Unusually large and comfortable cockpit
- Aft swim platform
- 2 x new generators recently installed; top end overhaul on main engine
- Full rig service
- Highly rated charter yacht

## Основная информация

**Тип судна:** Sloop

**Модельный год:** 2013

**Год постройки:** 2013

**Год обновления:** 2020

**Страна:** Italy

## Размеры

**Длина общая:** 129' 4" (39.40m)

**Длина по ватерлинии:** 111' 11" (34.10m)

**Ширина:** 30' 0" (9.13m)

**Мин. осадка:** 11' 6" (3.50m)

**Макс. осадка:** 29' 11" (9.10m)

## Скорость, вместимость и масса

**Крейс. скорость:** 10.5 Kts. (12 MPH)

**Дальность на крейсерской скорости:**  
3000

**Макс. скорость:** 14 Kts. (16 MPH)

**Чистый вес:** 254 Pounds

**Вместимость воды:** 1320.86026 Gallons

**Объем топливного бака:** 3804.0775488  
Gallons

## Размещение

**Всего кают:** 4

**Спальные места:** 9

**Каюты экипажа:** 3

**Спальных мест экипажа:** 6

## Корпус и палуба

**Материал корпуса:** Aluminum

**Материал палубы:** Teak

**Дизайнер корпуса:** Ron Holland Design / **Дизайнер экстерьера:** Perini Navi  
Perini Navi

**Дизайнер интерьера:** Perini Navi

## Информация о двигателе

**Двигатели:** 1

**Производитель:** CAT

**Модель:** C18

**Тип двигателя:** Inboard

# ПОДРОБНОЕ ОПИСАНИЕ

## DETAILED DESCRIPTION

```
#edmiston-espec { font-family: 'Helvetica Neue LT Std', 'Sans'; font-weight: 200; font-style:
normal; text-align: justify; text-justify: inter-word; line-height: 1.5em; color: #444; } #edmiston-
espec table { border-spacing: 0px; border-collapse: collapse; } #edmiston-espec td { text-align:
left; vertical-align: top; padding: 0px; margin: 0px; line-height: 1.5em; } #edmiston-espec th { text-
align: left; vertical-align: top; padding: 0px; margin: 0px; width: 5cm; } #edmiston-espec h1 { font-
family: 'Times New Roman','Serif'; color: #DB001E; } #edmiston-espec h2 { font-family: 'Times
New Roman','Serif'; color: #DB001E; } #edmiston-espec h3 { font-family: 'Times New
Roman','Serif'; color: #222; } #edmiston-espec ul { list-style: none; margin: 0; padding: 0 0 0 20px;
} #edmiston-espec li.bullet { list-style: disc; }
```

### 1. MAIN CHARACTERISTICS

<b>TYPE</b>	◦ Sloop Sailing Yacht
<b>HULL NO.</b>	◦ C.2180
<b>BUILDER</b>	◦ Perini Navi
<b>NAVAL ARCHITECT</b>	◦ Ron Holland Design / Perini Navi
<b>EXTERIOR DESIGN</b>	◦ Perini Navi
<b>INTERIOR DESIGN</b>	◦ Perini Navi
<b>YEAR</b>	◦ 2013
<b>REFIT</b>	◦ 2020
<b>CLASSIFICATION</b>	◦ ABS: MCA + A1, Commercial Yachting Service, Malta Cross AMS, MCA LY2 Short Range
<b>CONSTRUCTION</b>	◦ Aluminium Hull & Superstructure, Teak Decks
<b>KEEL CONFIGURATION</b>	◦ Centre board with fixed ballast of 17 tons
<b>CREW</b>	◦ 6
<b>FLAG</b>	◦ Isle of Man
<b>ENGINE</b>	◦ 1 x 500kW / 670Hp CAT C18
<b>GT</b>	◦ 254
<b>DISPLACEMENT</b>	◦ 220 max

### 2. DIMENSIONS

<b>LOA</b>	◦ 39.40m /129'3"
<b>LWL</b>	◦ 34.10m /111'
<b>BEAM</b>	◦ 9.13m / 31'

- DRAFT**
- 9.10m / 29' 10" max
  - 3.50m / 11'6" min

### 3. SPEED & RANGE UNDER POWER

- MAXIMUM SPEED** ○ 14 knots
- CRUISING SPEED** ○ 10.5 knots
- ECONOMICAL SPEED** ○ 7 knots
- RANGE** ○ 3,000nm @ 7 knots

### 4. CAPACITIES

- ACCOMMODATION**
- 8 + 1 x Guests in 4 cabins
  - (1 x Master, 2 x Double, 1 x Twin with Pullman)
- CREW**
- 6 x Crew in 3 cabins
- FUEL**
- 14,400 litres / 3,800 US gallons
- FRESH WATER**
- 5,000 litres / 1,100 US gallons
- LUBE OIL**
- 486 litres / 128 US gallons
- DIRTY OIL TANK**
- 430 litres / 113 US gallons
- GREY / BLACK WATER**
- 1,324 litres / 350 US gallons
- BILGE WATER TANK**
- 916 litres / 242 US gallons

### 5. ACCOMMODATION

STATE OF GRACE has a split-level saloon area which offers increased headroom and creates two social areas on the main and lower decks. Her full beam Master Suite offers a large Turkish Hammam steam shower, "Therasage" massage & shiatsu machine and fully equipped gym area with Technogym cross trainer, rowing machine, free weights and exercise bars. Two Queen size double cabins and a further convertible twin cabin with Pullman create accommodation for up to 9 guests in total.

Easy access to the sea, tenders and an extensive array of toys comes courtesy of a fold down transom revealing a large aft swim platform. An intelligent layout with ample relaxation, dining and watersports areas matched with optimized performance make STATE OF GRACE a spacious, comfortable and exciting yacht for any owner.

- Total deck area: 258 m<sup>2</sup> / 2,777 ft<sup>2</sup>
- Cockpit area: 32 m<sup>2</sup> / 344 ft<sup>2</sup>
- Saloon & wheelhouse

## DIMENSIONS

area: 73 m2  
/ 786 ft2

- Total owner & guest cabin area: 83 m2 / 893 ft2
- Total crew area: 54 m2 / 581 ft2
- Head room: 205cm in all guest areas

## DINING ROOM

- Dining table for 8 x guests
- 8 x Dining chairs
- 2 x Double couches
- 2 x Armchairs
- 1 x Bench for 4 x guests
- 3 x Coffee tables
- 2 x Sub-zero wine cellars, total 40 x bottles
- Concealed TV
- 1 x 6-seater sofa
- 1 x Carbon designer chair

## UPPER SALOON

- 2 x Chairs
- Coffee table
- Concealed TV
- Day head

**MASTER SUITE**

- portside
- forward
- o 1 x King bed
- o En suite with shower
- o Sanitary
- o 2 x Night tables
- o TV flat screen
- o Large bulkhead wardrobe with hanging lockers
- o and drawer
- o Office desk with one chair
- o 1 x Pull-out massage bed
- o Digital safe
- o Rowing machine “concept 2 Model E”
- o Cross trainer “synchro Technogym 700iE
- o 1 x Queen bed
- o En-suite shower
- o 1 x Pullman
- o Under the bed storage
- o Night table with drawer

**OWNER’S GYM****AFT STARBOARD CABIN**



### FWD STARBOARD CABIN

- 1 x wardrobe, drawers, shelves and mirror
- TV LCD
- 1 x Queen convertible to Twin bed
- En suite shower
- 1 x Pullman
- Under bed storage
- Night table with drawer
- 1 x wardrobe, drawers, shelves and mirror
- TV LCD
- 1 x Queen bed
- En suite shower
- Under the bed storage
- 2 x Night table with drawer
- 1 x Wardrobe, drawers and shelves and mirror
- TV LCD
- U-shaped dining table and seating
- Dishwasher
- Small fridge
- 1 x Double

### FORWARD PORTSIDE CABIN

### CREW MESS

## CAPTAIN'S CABINS

- bed
- o 1 x Single bed
- o En suite shower
- o Drawers under the bed
- o 1 x Wardrobe, drawers and shelves and mirror
- o TV LCD
- o Digital safe
- o 2 x Bunk bedded cabins
- o Each with shower and toilet
- o Each with Stereo and DVD player
- o Each with clothes hanging wardrobe

## CREW CABINS

### 6. MECHANICAL EQUIPMENT

- |                              |  |
|------------------------------|--|
| <b>ENGINE</b>                | o 1 x CAT C18 670Hp / 500 kW @ 2,100 rpm   |
| <b>GEARBOXES</b>             | o Hundested CPG- 32  |
| <b>ELASTIC COUPLING</b>      | o Vulkan   |
| <b>STEERING SYSTEM</b>       | o Marsili Electro-hydraulic  |
| <b>PROPELLER &amp; SHAFT</b> | o Hundested 4-blade CP in NI-AOL Bronze S/S shaft, brake on water lubricated bushing |
| <b>THRUSTERS</b>             | o 2 x 75Hp retractable Hundested (hydraulics powered via PTO on gearbox)             |
| <b>GENERATORS</b>            | o 2 x 68 kW Caterpillar C4.4 380V 50Hz, 1,500 rpm                                    |
| <b>EMERGENCY GENERATORS</b>  | o 1 x 4kW 3,000rpm 380V 50Hz   |
| <b>SHORE POWER</b>           | o Asea 63kVA frequency converter, seamless transfer capability                       |

<b>OUTPUT</b>	<ul style="list-style-type: none"> <li>○ 380V/ 50Hz 3-Phase</li> <li>○ 220V / 50Hz single phase - lighting &amp; low power machinery</li> <li>○ 24V DC - emergency lighting, electronics instruments &amp; alarms</li> </ul>
<b>BATTERIES</b>	<ul style="list-style-type: none"> <li>○ 1 x Gel 24V 400A Services</li> <li>○ 1 x Gel 24v 400A Emergency lights</li> <li>○ 1 x Gel 24v 200A Main engine starting</li> <li>○ 2 x Gel 24v 150A Generator starting</li> <li>○ 1 x Gel 12v 100A Emergency Generator starting</li> </ul>
<b>FIRE &amp; EMERGENCY PUMP</b>	<ul style="list-style-type: none"> <li>○ 2 x 380 CV Gianceschi 470 l/m bilge &amp; fire pump</li> <li>○ 1 x Diesel bilge &amp; fire pump</li> </ul>
<b>BILGE PUMP</b>	<ul style="list-style-type: none"> <li>○ 8 x 24V Automatic</li> </ul>
<b>AIR CONDITIONING</b>	<ul style="list-style-type: none"> <li>○ Condaria</li> </ul>
<b>BOILERS</b>	<ul style="list-style-type: none"> <li>○ 2 x 100 l with 2 x heating 2.5kW each</li> </ul>
<b>WATERMAKER</b>	<ul style="list-style-type: none"> <li>○ 2 x Idromar 125 lph</li> </ul>
<b>SEWAGE SYSTEM</b>	<ul style="list-style-type: none"> <li>○ Selmar (17-pax rated)</li> </ul>
<b>OILY WATER SEPARATOR</b>	<ul style="list-style-type: none"> <li>○ Filtering system</li> </ul>
<b>7. SAILS &amp; RIGGING</b>	
<b>SAILS</b>	<ul style="list-style-type: none"> <li>○ Systems designed &amp; built by Perini Navi, handled semi-automatically</li> <li>○ Operation via 1 x console or a joy stick</li> <li>○ Monitoring system allows continuing verification of sails systems status</li> </ul>
<b>SAIL DIMENSIONS</b>	<ul style="list-style-type: none"> <li>○ Total sail area upwind: 893 m2 / 9,612 ft2</li> <li>○ Main sail: 378 m2 / 4,069 ft2</li> <li>○ Reacher: 515 m2 / 5,543 ft2</li> <li>○ Jib: 301 m2 / 3,240 ft2</li> <li>○ MPS: 900 m2 / 9,688 ft2</li> </ul>
<b>SAILS SET</b>	<ul style="list-style-type: none"> <li>○ Doyle full batten main with 2 x reefs: 370 m2 (2016)</li> <li>○ Doyle tri-radial blade with 2 x reefs: 300 m2 (2020)</li> <li>○ Doyle tri radial carbon spectra reacher: 510 m2 (2016)</li> <li>○ Doyle Asymetric (A2) with sock &amp; bucket: 900 m2</li> <li>○ North - small delivery Mainsail (2020)</li> </ul>
<b>MAST &amp; RIGGING</b>	<ul style="list-style-type: none"> <li>○ Southern Spars High Modulus carbon mast &amp; boom</li> <li>○ Height above DWL: 51m (170 ft)</li> <li>○ Rigging (Standing): EC6 carbon fibre</li> <li>○ Carbon fibre mainsail furling boom</li> <li>○ Bamar furlers for jibs and reacher</li> <li>○ New generation Perini Navi captive reel winches</li> </ul>

- Rondal carbon hatches
- Carbon Fibre tender lifting pole with captive winch
- Navtec double acting hydraulic vang
- Navtec hydraulic backstay

## 8. NAVIGATION EQUIPMENT

<b>AUTOPILOT</b>	<ul style="list-style-type: none"> <li>○ 1 x A&amp;T GPD Pilot Display (wheelhouse)</li> <li>○ 1 x B &amp; G H3000 GPD Pilot Display (external)</li> <li>○ 1 x B &amp; G Rudder (steering)</li> <li>○ Hatteland-Mini CPU w/pa 2.4G Processor with 17' monitor (wheelhouse)</li> </ul>
<b>RADAR / CHART PLOTTER</b>	<ul style="list-style-type: none"> <li>○ Furuno Blackbox Navnet 3D SXGA</li> <li>○ Chartplotter (wheelhouse)</li> <li>○ Furuno Black Box Navnet 3D SXGA Colour</li> <li>○ Chartplotter (external)</li> <li>○ 12.9" iPad Pro with Navionics back up</li> </ul>
<b>HORN</b>	<ul style="list-style-type: none"> <li>○ Tyfon MKT 75/660</li> </ul>
<b>L.R.I.T</b>	<ul style="list-style-type: none"> <li>○ 1 x Sailor TT 3000 LT</li> </ul>
<b>NAVTEX SYSTEM</b>	<ul style="list-style-type: none"> <li>○ 1 x Furuno LCD</li> </ul>
<b>AIS</b>	<ul style="list-style-type: none"> <li>○ 1 x Furuno FA 150</li> <li>○ 1 x Sailor SART 2</li> </ul>
<b>FLEET BROAD BAND</b>	<ul style="list-style-type: none"> <li>○ 1 x VSat</li> </ul>
<b>EPIRB</b>	<ul style="list-style-type: none"> <li>○ 2 x Sailor SGE406</li> </ul>
<b>COMPASSES</b>	<ul style="list-style-type: none"> <li>○ B&amp;G H3000 Halcyon Gyro</li> <li>○ Furuno rate compensated heading sensor</li> <li>○ Hein &amp; Oetting Venus Magnetic compass</li> </ul>
<b>DEPTH SOUNDER</b>	<ul style="list-style-type: none"> <li>○ Furuno Network Sounder, Navnet Fishfinder</li> </ul>
<b>GPS</b>	<ul style="list-style-type: none"> <li>○ Furuno GP150</li> </ul>
<b>WIND INSTRUMENTS</b>	<ul style="list-style-type: none"> <li>○ 1 x B &amp;G 3000 Hercules Pack system complete with</li> <li>○ 1 x Heel, 1 x Standard 213 masthead, 1 x Depth,</li> <li>○ 1 x Paddle wheel</li> <li>○ 1 x Analogue wind direction</li> <li>○ 1 x Analogue wind speed indicator</li> </ul>
<b>WHEELHOUSE</b>	<ul style="list-style-type: none"> <li>○ 1 x Analogue magnified instrument</li> <li>○ 1 x Analogue boat speed instrument</li> <li>○ 2 x GFDs</li> </ul>
<b>EXTERNAL</b>	<ul style="list-style-type: none"> <li>○ 4 x B&amp;G Triton multi-display (2020)</li> <li>○ 1 x B&amp;G GFDs</li> <li>○ 2 x Jumbo 20.20</li> </ul>
<b>CREW AREA</b>	<ul style="list-style-type: none"> <li>○ 1 x GFD, crew mess</li> <li>○ 1 x GFD in captain's cabin</li> </ul>

## 9. COMMUNICATION EQUIPMENT

**GMDSS RADIO**

- o 1 x Sailor TT 3000EB
- o 2 x Sailor SP3520 portable VHF
- o 2 x Sailor 6215 & 6222 DSC VHF (wheelhouse)
- o 1 x sailor C4901 Control Handset (wheelhouse)

**VHF RADIO TELEPHONE**

- o 1 x Sailor C4901 Control Handset VHF A1 (external)
- o 1 x Sailor C4901 Control handset/speaker (crew mess)

**INTERNET CONNECTIONS**

- o 2 x Sailor 250 Broad Band
- o 1 x Cobham 800 Antenna
- o 1 x Pepwave Cell terminal
- o Panasonic KX-TDA 100
- o 9 x KX-DT343 telephone unit

**TELEPHONE EXCHANGE**

- o 8 x KX-TDA0142 4 channel DECT Base Station
- o 6 x KX-TCA256 DECT Handset
- o 1 x Watertight stainless steel-cased door phone for use either side at side boarding or gangway boarding

**ETHERNET LAN NETWORK**

- o Dell PE860 Power Edge Server Computer

## 10. DECK EQUIPMENT

**ANCHOR WINDLASS SYSTEM**

- o Nani with 2 x hydraulic hinging anchor bowsprits

**AFT WARPING CAPSTANS**

- o Harken 1120 3-speed

**ANCHORS**

- o 2 x Stainless steel CQR 182 Kg 16mm chains

**PASSERELLE**

- o Pincraft

**BOARDING LADDER STBD**

- o Pincraft

## 11. ENTERTAINMENT EQUIPMENT

**AV SYSTEM**

- o Audio visual system based around Control 4 Processors & remote controls

**MAIN SALOON**

- o Panasonic 42' Plasma display TV
- o 6000 Kaleidescape system
- o Samsung blue ray BP-P1500 disc player
- o Airplay control with Chromecast system

**LOWER SALOON**

- o Panasonic 42' Plasma display TV
- o 6000 Kaleidescape system
- o Airplay

**OWNER'S CABIN**

- o Panasonic 42' Plasma TV
- o 6000 Kaleidescape system
- o Samsung blue ray BP-P1500 disc player
- o Airplay control & Apple TV

**OWNER'S STUDY**

- o Speakers & Creston wall mount LCD controller

<b>GYM STARBOARD CABIN</b>	<ul style="list-style-type: none"> <li>○ 15" LCD TV with speakers</li> <li>○ Sharp 20" Aquos LCD TV</li> <li>○ 300 Kaleidescape system</li> </ul>
<b>PORTSIDE CABIN</b>	<ul style="list-style-type: none"> <li>○ Sharp 32" Aquos LCD TV</li> <li>○ 300 Kaleidescape system</li> <li>○ Bluetooth &amp; Airplay</li> </ul>
<b>STARBOARD FWD CABIN</b>	<ul style="list-style-type: none"> <li>○ Sharp 32" Aquos LCD TV</li> <li>○ 300 Kaleidescape system</li> <li>○ Bluetooth &amp; Airplay</li> </ul>
<b>CREW MESS</b>	<ul style="list-style-type: none"> <li>○ Philips 15" LCD</li> <li>○ Kaleidescape</li> </ul>
<b>CAPTAIN'S CABIN</b>	<ul style="list-style-type: none"> <li>○ Philips 15" LCD</li> </ul>
<b>CREW CABINS</b>	<ul style="list-style-type: none"> <li>○ Stereo &amp; speakers</li> </ul>
<b>SATELLITE TV</b>	<ul style="list-style-type: none"> <li>○ Seatel Cobham VSTA (new 2016) with independent receivers for the Master cabin, upper &amp; lower salon</li> </ul>
<b>BOW SUNPAD</b>	<ul style="list-style-type: none"> <li>○ Control 4 Deck tablet</li> <li>○ 2 x Speakers Promar</li> </ul>
<b>AFT COCKPIT</b>	<ul style="list-style-type: none"> <li>○ 1 x Airplay control with Chromecast system</li> <li>○ Bluetooth through the Upper salon</li> <li>○ 2 x Promar speakers</li> <li>○ Panasonic 40" TV / LCD</li> </ul>
<b>HELM POD</b>	<ul style="list-style-type: none"> <li>○ 2 x Promar speakers</li> </ul>
<b>12. GALLEY &amp; LAUNDRY EQUIPMENT</b>	
<b>GALLEY</b>	<ul style="list-style-type: none"> <li>○ 1 x Industrial 6-burner stove</li> <li>○ 1 x Miele oven M399B</li> <li>○ 1 x Miele Jubilee SC dishwasher</li> <li>○ 1 x Elitech Fridge</li> <li>○ 1 x ISE macerator</li> <li>○ 1 x Espresso machine</li> <li>○ Range hood variable speed stainless steel</li> <li>○ 2 x Microwave ovens</li> <li>○ 1 x Custom galley 1,300 litres</li> <li>○ 1 x Deep freezer</li> </ul>
<b>REFRIGERATION / FREEZER</b>	<ul style="list-style-type: none"> <li>○ 1 x Custom aft cockpit 150 litres</li> <li>○ 1 x Custom bilge storage 1,000 litres</li> <li>○ 1 x Garbage locker in forepeak</li> <li>○ 2 x 6kg Professional Miele washing machines</li> <li>○ 2 x 6kg Marine driers</li> </ul>

**LAUNDRY**

- 1 x World hinged iron board
- 1 x Flatwork ironer
- Laundry connected to crew mess
- 1 x Fridge
- Trash compactor
- Sink station

**CREW MESS**

- 1 x Dishwasher
- VHF Remote
- CCTV screen
- Flush mounted access to under floor deep freeze

**13. SECURITY & SAFETY EQUIPMENT****SAFETY**

- Compliant with MCA rules for safety equipment:
- 2 x Life-rafts (8-people)
- 1 x Life raft (6-people)
- Life rings
- ABS and MCA approved life jackets

**FIRE FIGHTING**

- FM 200 plant
- Fire extinguisher
- Fire crew Equipment

**SECURITY**

- CCTV2:
- Speed Dome PTZ (spreaders)
- 1 x Speed Dome PTZ (engine room)
- Both connected to 17' LCD in Wheelhouse & crew mess

**14. TENDERS & WATERSPORTS EQUIPMENT****TENDER**

- 1 x 5.50m Pascoe with inboard Yanmar 150Hp RIB (refitted 2020)
- 2 x Stand-up paddleboards

**WATERSPORTS**

- Water skis (adult & children)
- Inflatable Yacht Pool

**DIVING /  
FISHING**

- Snorkelling gear
- Full deep-sea fishing equipment (fighting chair, multiple rod, reels & tackle)

**15. REFIT NOTES**

- WINTER 2019-2020
  - Main engine top end overhaul
  - 2 x New Generators
  - Rig out, checked & polished
  - Jib/Blade sail new July 2020
  - Tanks pumped out, pressure washed & cleaned October 2020
  - Teak decks 90% re-caulked July 2020

**16. COMMENTS**

Finalist for six industry awards, STATE OF GRACE is the result of a winning collaboration

with Ron Holland Design and the bespoke tailoring of Perini Navi to provide a high-performance world cruising contemporary sloop for an experienced yachtsman driven by cutting-edge sailing technology. The lifting keel allows the yacht to get much closer to shore in anchorages compared to other similar sized yachts.

Her aluminium hull and superstructure give a displacement of up to 220 tons, new generation Perini Navi captive reel winches hold 12 tons, rewinding 35 metres of sheets per minute. She comes complete with Southern Spars carbon Hybrid Modulus mast and boom, EC6+ carbon fibre rigging controlled from the trademark Perini hemi-spherical helm pod (all controllable by one person) and offers exceptional manoeuvrability.

STATE OF GRACE also comes with an outstanding worldwide reputation as a successful charter yacht, offering a new owner an established revenue stream if desired.

#### o KEY FEATURES

- Powerful sailing yacht
- Full beam Master Suite with full en suite and direct access to Gym room
- Accommodating 6 guests in 2 Queen size double cabins and 1 further convertible twin cabin with Pullman bed for a total capacity of 9 guests
- Fully equipped gym area with Technogym cross trainer, rowing machine, free weights and exercise bars
- Perini famed large and comfortable access to the sea via side retractable boarding ladder or large stern platform
- Tenders and an extensive array of toys come courtesy of a fold down transom revealing a large aft swim platform

## Исключения

---

При продаже яхты исключаются личные вещи владельца.

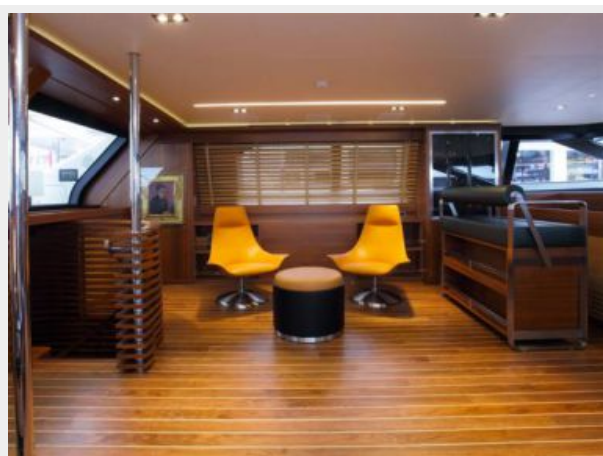
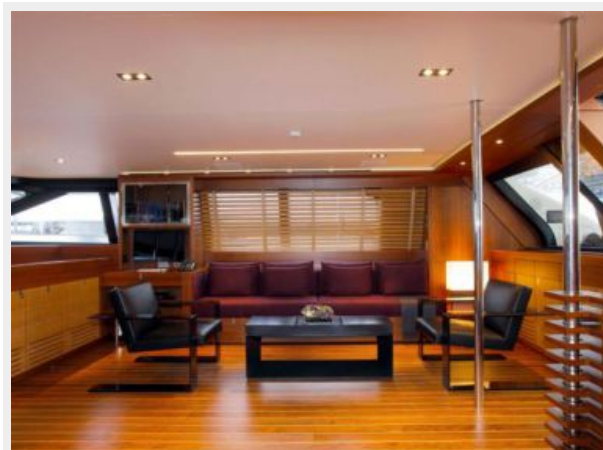
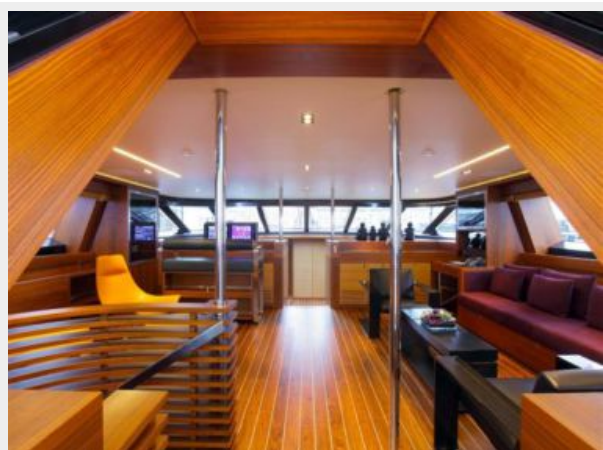
## Отказ от ответственности

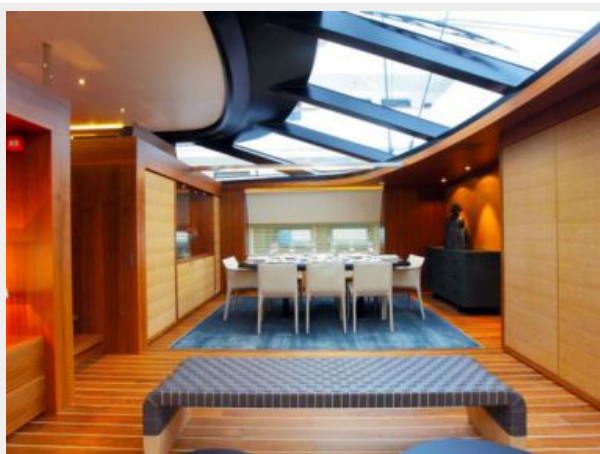
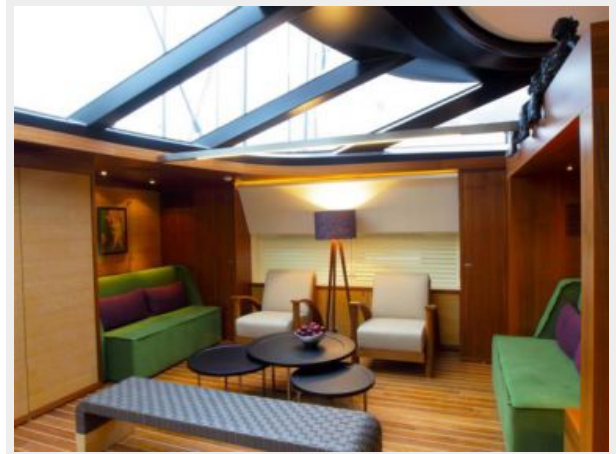
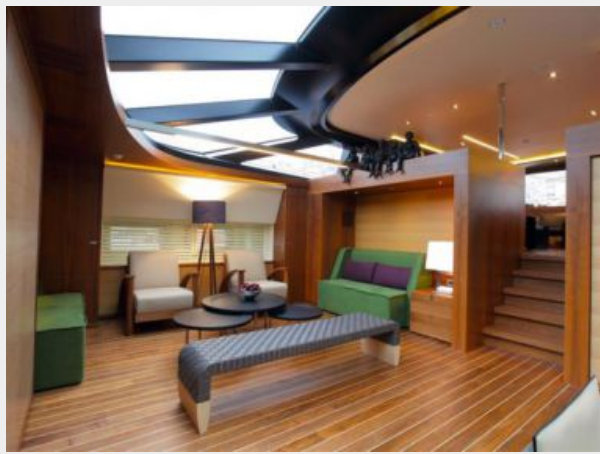
---

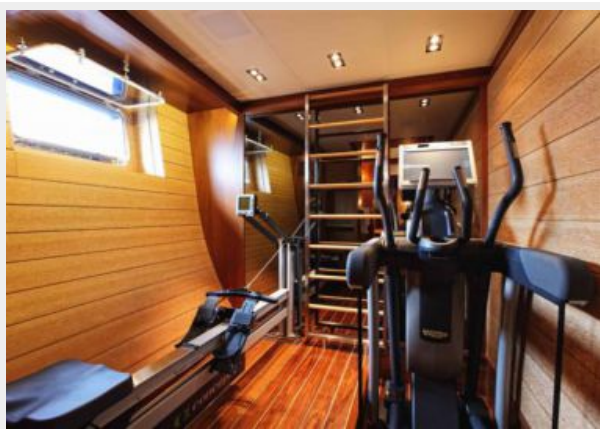
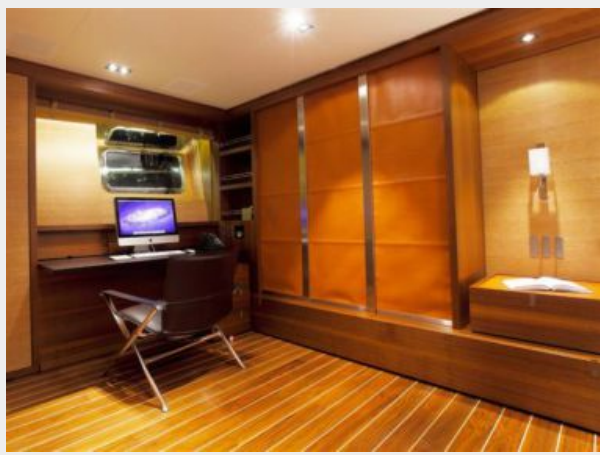
Компания предоставляет описание судна или яхты добросовестно, но не может гарантировать точность этой информации, а также не ручается за техническое состояние. Покупатель должен проинструктировать своих агентов или оценщиков исследовать представленную информацию более подробно, по собственному желанию. Продажа судна или яхты, изменение цены или снятие с продажи будет происходить без предварительного уведомления.

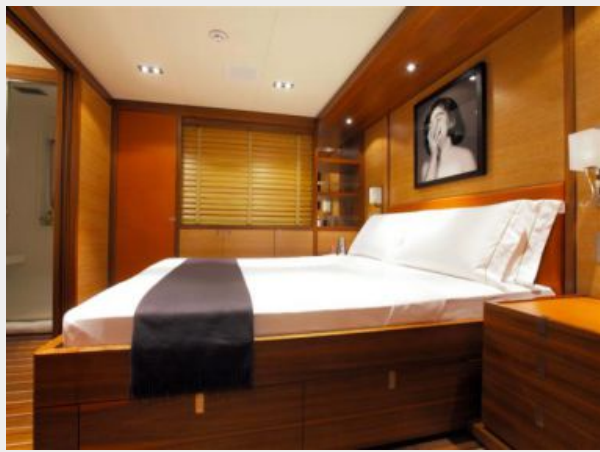


# ФОТОГРАФИИ

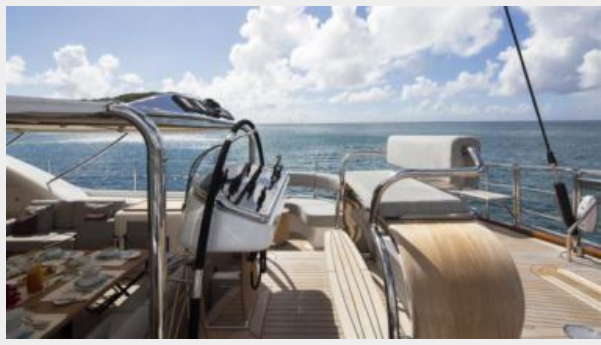


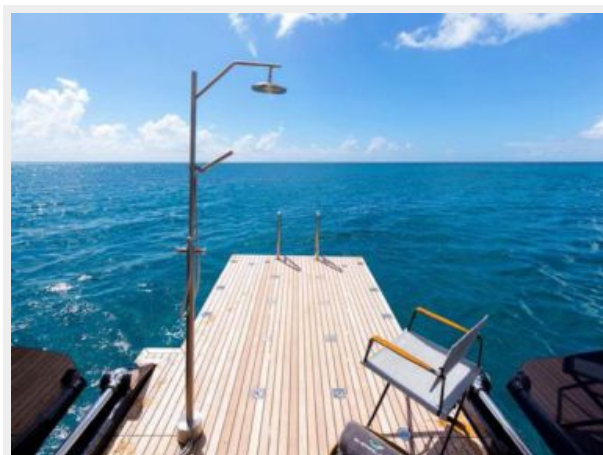










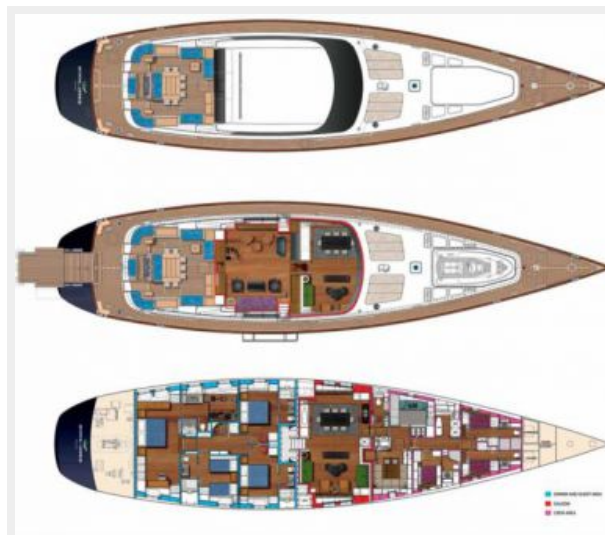




### State of Grace Sail Plan



### State of Grace GA





# КОНТАКТЫ

---

Андрей Шестаков (Andrey Shestakov) – ведущий яхтенный брокер отдела продаж яхт и судов компании Shestakov Yacht Sales Inc. Официальный представитель Shestakov Yacht Sales Inc. для русскоговорящих клиентов в центральном офисе компании в Майами/Форт Лодердейл/Флорида/США.

## Контактная информация

---

Email: [andrey@shestakovyachtsales.com](mailto:andrey@shestakovyachtsales.com)

Web: [shestakovyachtsales.com](http://shestakovyachtsales.com)

## Телефоны

---

Краснодарский край: **+7(918)465-66-44**

США, Майами, Флорида: **+1(954)274-4435**

## Время работы

---

Понедельник – Суббота: **9:00 - 21:00**  
EDT

Воскресенье: **Закрыто**

## Адрес

---



Harbour Towne Marina, 850 NE 3rd St,  
STE 213, Dania, FL 33004